



Oil Separator INSTALLATION INSTRUCTIONS

81-0800

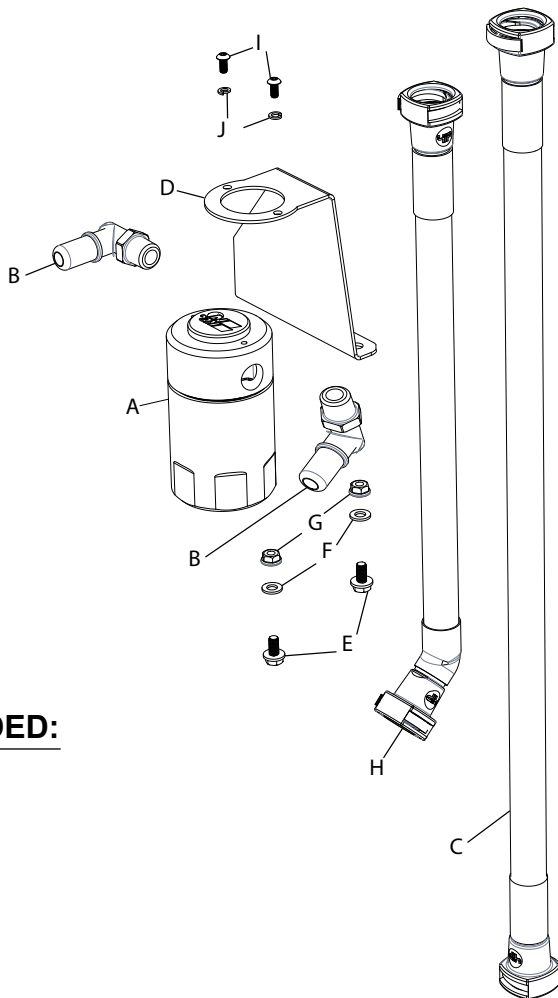
FORD

2011-23 F-150 3.5L EcoBoost

2015-21 F-150 2.7L EcoBoost

2011-23 F-150 5.0L

2018-21 Expedition 3.5L EcoBoost



TOOLS NEEDED:

- Drill
- 1/4" Drill Bit
- 10mm Wrench
- 10mm Socket
- 3/32" Allen Key
- Adjustable Wrench

PARTS LIST:

	Description	Qty.	Part #
A	CATCH CAN; 2.5"OD X 4.5"H	1	85-6860
B	FITTING; 3/8NPT TO .625OD	2	082634
C	HOSE; 1/2"ID X 20"L	1	084140
D	BRACKET	1	010220A
E	BOLT; M6-1 X 16MM, HEX	2	07812
F	WASHER; 6MM FLAT	2	08269
G	NUT; 6MM NYLOCK, HEXHD	2	07512
H	HOSE; 1/2"ID X 12"L	1	084141
I	8-32 X 3/8; BTNHD HEX	1	91255A192
J	18-8 SPLIT LOCK WASHER	2	92146A618

1. Verify you have all the parts included in the kit.



2. **2.7L** Remove Electrical harness "Christmas Tree" from the battery tray



3. **For 2.7L** Line up wire harness hole in the battery tray with rear hole on the bracket as shown. Using the bracket as a template, mark the hole nearest to be drilled. Using 1/4 drill bit, drill hole through the battery tray. Mount the bracket by using the M6 bolts and nuts.



3a. **For 3.5L** Using the bracket as a template, place the bracket towards the firewall side of the battery tray as shown. Line up the bracket so the holes are in the center of the battery tray lip so as not to be close to the edge. Mark the holes then using 1/4 drill bit, drill hole through the battery tray. Mount the bracket by using the M6 bolts and nuts.



3b. **For 11-23, 5.0L** Using the bracket as a template, line up the bracket so the hole are in the center of the battery tray lip on the in between battery terminals as shown. Mark the holes then using 1/4" drill bit, drill hole through the battery tray. Mount the bracket by using the M6 bolts and nuts. *Note* Some later production dates may have an existing hole where wire harness "Christmas Tree" is that can be used.



4. Remove factory PCV line by pulling tabs and removing it from the PCV valve and intake manifold.



4b. For 2.7L



4c. For 3.5L



4d. For 5.0L

5. Assemble the 90 degree quick disconnect fittings to the top of the air/oil separator. We recommend using PTFE tape on the fittings to ensure a proper seal.

6. Using the 2 button head screws and lock washers, mount the Oil separator to the mounting bracket. The "N" of K&N logo should be towards the passenger side.



7. Install hoses on to oil separator as shown. Mount the short hose with 45 degree fitting going to the PCV on the valve cover. Mount the long hose with straight fittings to the intake manifold. ***CRITICAL NOTE*** on ALL applications: The hose with the Straight fitting will go to the intake manifold. The hose with the 45-Degree fitting will go to the PCV valve.



7a. For 2.7L



7b. For 3.5L



7c. For 5.0L

We recommend to check the oil separator every 10,000 miles or 12 months (sooner if vehicle is driven in harsher conditions such as towing or off-road).