

# Installation Instructions

I - Sheet Number I-PW00846201 Rev. A



Premium Style. Lasting Performance.

For proper installation and best possible fit, please read all instructions BEFORE you begin.  
For technical assistance or to obtain missing parts, please call Customer Relations at 1-800-241-7219.

Para una instalación adecuada y el mejor ajuste posible, lea todas las instrucciones ANTES de comenzar.  
Para obtener asistencia técnica o para obtener piezas que faltan, por favor llame a Relaciones con el cliente en 1-800-241-7219.

Pour une installation correcte et le meilleur ajustement possible, s'il vous plaît lire toutes les instructions AVANT de commencer.  
Pour une assistance technique ou pour obtenir des pièces manquantes, s'il vous plaît communiquer avec les Relations à la clientèle au 1-800-241-7219.

## Care and Cleaning

- **Wash only with mild soap & dry with a clean cloth.**  
Lavar con jabón suave y seque con un paño limpio.  
Laver avec un savon doux et séchez avec un chiffon propre.
- **Every 3 months or 5000 miles check the cover tension and all components for tightness.**  
Revise cada 3 meses o 5,000 millas la tensión de la cubierta y todos los componentes estén ajustados.  
Vérifiez tous les 3 mois ou 5000 miles la tension couvercle et le serrage des composants.

## Congratulations!

You have purchased one of the many quality Lund® branded products offered by Lund International, Inc. We take the utmost pride in our products and want you to enjoy years of satisfaction from your investment. We have made every effort to ensure that your product is top quality in terms of fit, durability, finish and ease of installation.

Usted ha comprado uno de los muchos productos de calidad ofrecidos por Lund® de marca productos ofrecidos por Lund International, Inc. Tomamos el orgullo extremo en nuestros productos y queremos que disfrute durante años de su inversión. Hemos hecho todos los lo posible para que su producto es de calidad superior en cuanto a ajuste, durabilidad, acabado y facilidad de la instalación.

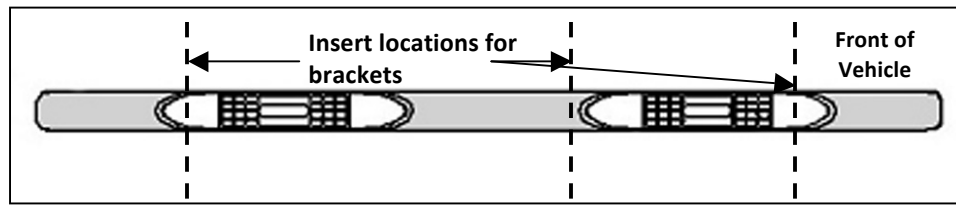
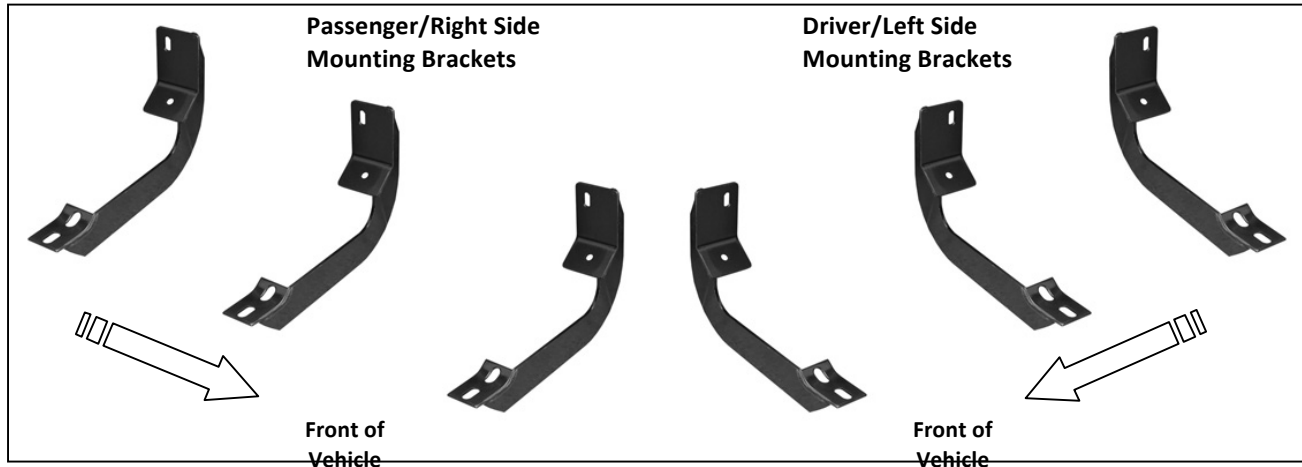
Vous avez acheté un des nombreux produits de qualité offerts par Lund® marque produits offerts par Lund International, Inc Nous sommes extrêmement fiers de nos produits et souhaitons que vous tiriez des années de satisfaction de votre investissement. Nous avons pris toutes les efforts pour s'assurer que votre produit est de qualité supérieure en termes de durabilité, de finition et la facilité de l'installation.

# INSTALLATION INSTRUCTIONS

PART# 24386008

## PARTS LIST:

1	Driver/Left Sidebar	12	8-1.25mm x 25mm Hex Bolts
1	Passenger/Right Sidebar	18	8mm Lock Washers
3	Driver/Left Mounting Brackets	18	8mm x 24mm OD x 2mm STD Flat Washers
3	Passenger/Right Mounting Brackets	6	8mm x 16mm OD x 1.6mm Small Flat Washers
6	8-1.25mm x 30mm Hex Bolts	6	8mm Nylon Lock Nuts



## PROCEDURE:

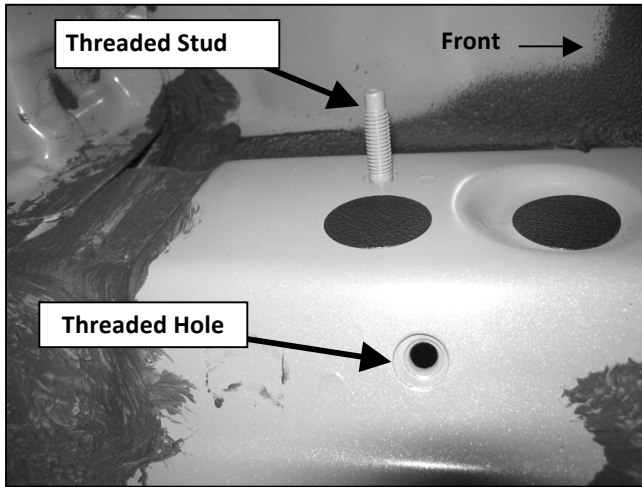
1. REMOVE CONTENTS FROM BOX. VERIFY ALL PARTS ARE PRESENT. READ INSTRUCTIONS CAREFULLY BEFORE STARTING INSTALLATION.
2. Start installation at the front of the driver side of the vehicle and locate the factory threaded stud and the threaded hole located on the side of the inner body panel, **(Figure 1)**. **NOTE:** Remove the plastic plug or any insulation on the side panel to locate the threaded holes.
3. Select (1) driver side Mounting Bracket. Attach the Bracket to the threaded stud with (1) 8mm x 24mm STD Flat Washer and (1) 8mm Nylon Lock Nut. Next, insert (1) 8mm x 30mm Hex Bolt with (1) 8mm Lock Washer and (1) 8mm x 16mm Small Flat Washer through the remaining lower hole in the Bracket and into the threaded hole, **(Figure 2)**. Snug but do not tighten hardware at this time.
4. Repeat **Steps 2 – 3** to install the center and rear Mounting Brackets, **(Figures 2 – 4)**. **NOTE:** The cradles on the Mounting Brackets should be facing the rear of the vehicle when properly installed.
5. Once all three Mounting Brackets are partially installed, carefully place the driver Sidebar onto the Mounting Brackets. Use the included (6) 8mm x 25mm Hex Bolts, (6) 8mm Lock Washers and (6) 8mm x 24mm STD Flat Washers to bolt the Sidebar to Mounting Brackets, **(Figures 3 & 4)**.
6. Level and adjust the Sidebar and tighten all hardware at this time.
7. Repeat **Steps 2 – 6** for passenger Sidebar installation.
8. Do periodic inspections of the installation to make sure that all hardware is secure and tight.

To protect your investment, wax this product after installing. Regular waxing is recommended to add a protective layer over the finish. Do not use any type of polish or wax that may contain abrasives that could damage the finish.

For stainless steel: Aluminum polish may be used to polish small scratches and scuffs on the finish. Mild soap may be used also to clean the Sidebar.

For gloss black finishes: Mild soap may be used to clean the Sidebar.

### Driver Side Installation Pictured



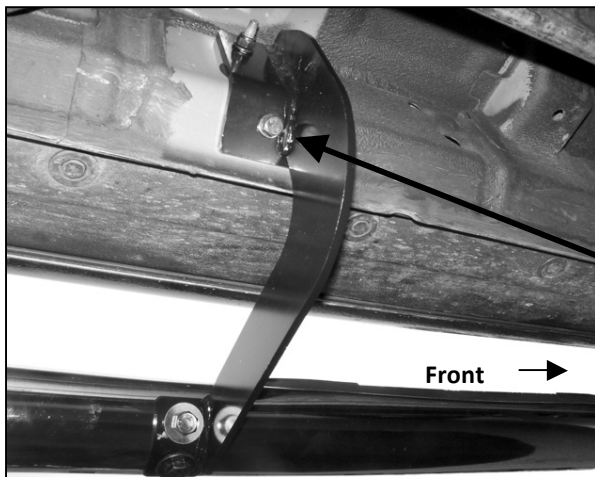
(Fig 1) Driver side rear mounting location pictured. Note: Remove plastic plugs to locate factory threaded holes

8mm x 30mm Hex Bolt  
8mm Lock Washer  
8mm x 16mm Small Flat Washer

8mm Nylon Lock Nut  
8mm x 24mm STD Flat Washer



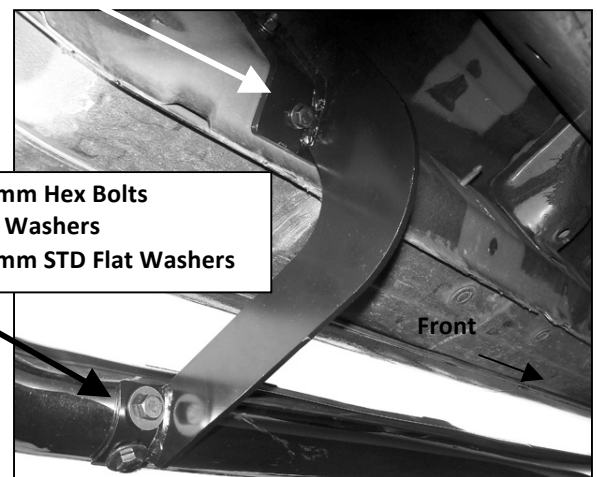
(Fig 2) Driver side front mounting location pictured



(Fig 3) Driver side center mounting location

8mm x 30mm Hex Bolt  
8mm Lock Washer  
8mm x 16mm Small Flat Washer

(2) 8mm x 25mm Hex Bolts  
(2) 8mm Lock Washers  
(2) 8mm x 24mm STD Flat Washers



(Fig 4) Driver side rear location pictured



Complete Installation