

INSTALLATION INSTRUCTIONS AND PARTS LIST

MODEL 415036, 36" GRIP STEPS (BOARDS ONLY)

1. READ INSTRUCTIONS COMPLETELY AND CHECK TO MAKE SURE THAT ALL REQUIRED PARTS (LISTED ON THE SERVICE PARTS LIST) ARE ON HAND BEFORE STARTING THE INSTALLATION.
2. FOLLOW THE INSTRUCTIONS INCLUDED WITH THE SPECIFIC BRACKET PACKAGE THAT YOU ARE USING TO MOUNT THE BRACKETS TO YOUR VEHICLE.
3. STEP ASSEMBLY:
 - 3.1 BEFORE ATTACHING THE GRIP STEPS TO THE BRACKETS, SLIDE THE APPROPRIATE NUMBERS OF SUPPORT BRACES (ITEM #2) INTO THE CHANNEL OF THE STEP (ITEM #1).
 - 3.2 SLIDE THE END CAP (ITEM #3) OVER THE FRONT AND REAR OF EACH STEP. USING THE SUPPLIED #8 X 1/2" SELF-DRILLING TEK SCREW (ITEM #8); SCREW THE END CAP TO THE BOTTOM OF THE STEP.
4. ATTACHING THE STEP TO THE MOUNTING BRACKETS:
 - 4.1 SET THE STEP ON THE MOUNTING BRACKETS, AND SLIDE EACH SUPPORT BRACE OVER THE TOP OF EACH MOUNTING BRACKET. ATTACH THE FLAT SPACER PLATE (ITEM #4) TO THE BOTTOM OF THE STEP, BETWEEN THE SUPPORT BRACE, AND THE TOP OF THE MOUNTING BRACKET.
 - 4.2 USING THE SUPPLIED 5/16-18 X 1" CARRIAGE BOLT, WASHER, AND FLANGE NUTS, (ITEM # 5, 6, 7), ATTACH THE STEP ASSEMBLY, FLAT SPACER PLATE AND MOUNTING BRACKET.
 - 4.3 SET THE STEP PLATE IN THE CORRECT POSITION AND TIGHTEN ALL FASTENERS. TORQUE ALL 5/16" FASTENERS TO 19 LB FT.

SERVICE PARTS LIST

ITEM	PART NO.	QTY	DESCRIPTION
1	551699	2	EXTRUSION-AL,36.00, GRIP STEP,BLK,415036
2	551296	4	SUPPORT BRACE, UPPER, GALV
3	551394	4	CAP-END,GRIP STEP, BLACK, PLASTIC
4	551298	4	SPACER PLATE, LOWER, BLACK
5	108683	8	BOLT-CRG,5/16-18 X 1.0", SST
6	101369	8	WASHER-FLAT,5/16,SST
7	102680	8	NUT-SERR FLG,HX,SST,WX,5/16-18
8	107958	8	SCR-TEK #8-18 X 1/2",SST,BLK



(A LUEVERNE Company)

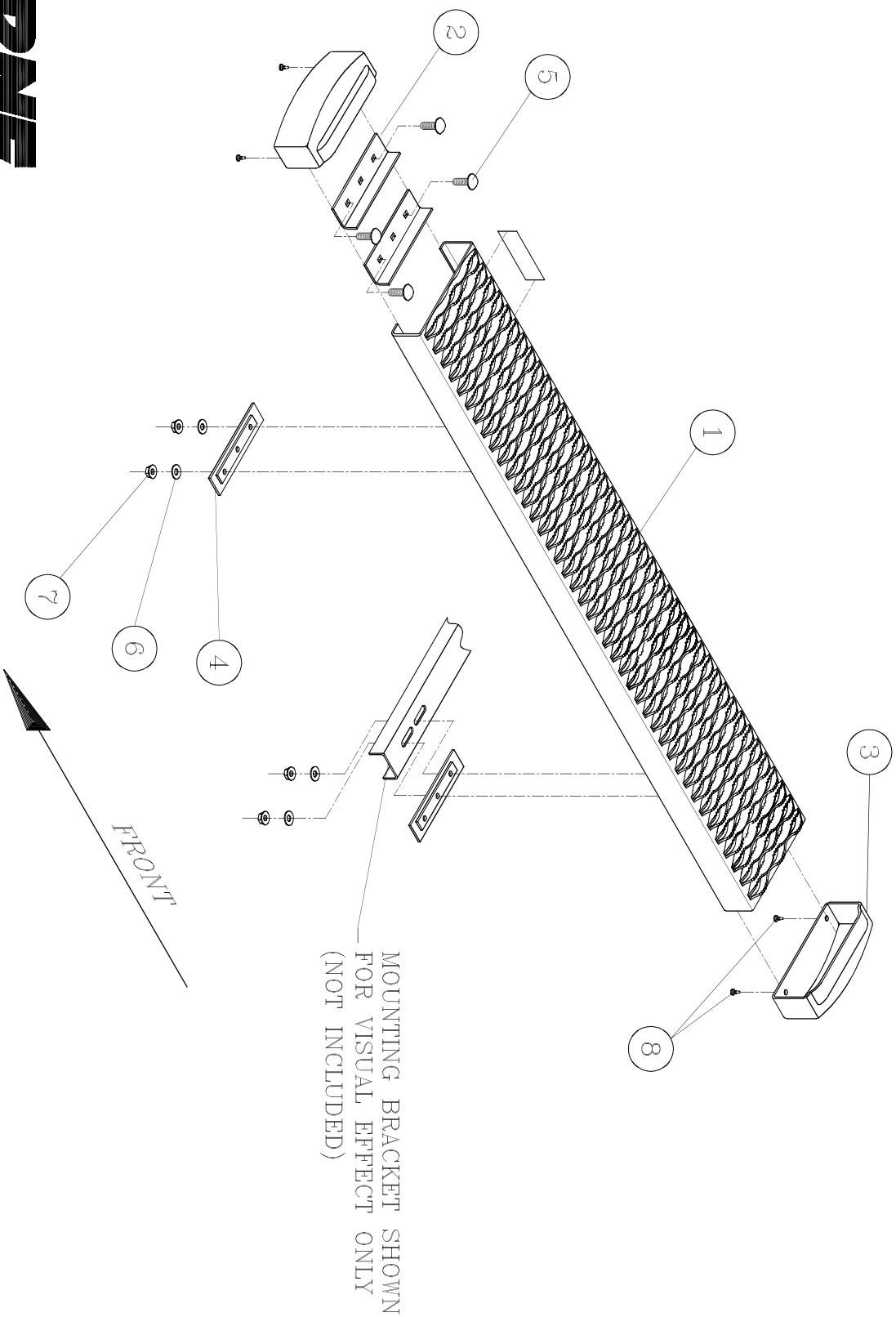
1200 E. Birch St.

Brandon, SD 57005

551974 SHEET 1 OF 2 30AUG11

SERVICE PARTS LIST

MODEL NO. - 415036



(A LIVERNE Company)

1200 E. Birch St.


Brandon, SD 57005



401720

[illegible]

Easy



AC Top
Mounting
Bracket
(553212)

Make sure all required parts are on hand before starting the installation.

Socket, 1/2"	Ratchet
Wrench, 1/2"	Drill
Flat Screwdriver	Drill Bit, 3/8"
Marker	Drill Bit, 3/32
Putty Knife	Drill Bit, 19/64

Step 1

Starting on the Passanger side, locate mounting locations as shown in Fig 1 and Fig 3.

Hold each bracket in its mounting locations and mark each hole on the rocker and pinch weld.



Step 2

From the under side of the plastic rocker molding use a flat head screw drive to release the bottom push pins.

NOTE: Do not remove plastic trim all the way only release the bottom push pins.



Step 3

Starting on the first bracket using a 3/32" drill bit, drill a pilot hole in each of the marked spots followed by a 3/8" drill bit.

NOTE: Place a Putty knife between the pinch weld and the plastic rocker molding to avoid damaging molding from drilling.



Step 4



Using the 3" U-Bolt put it through the top 2 mounting holes and secure with (2) plastic bolt retainer.

Slide (2) Clip Nuts on the pinch weld for the bottom mounting locations.

Slide the front mounting bracket on the U-Bolts and secure with (2) 5/16 flat washers (2) 8mm nuts on the studs, and (2) 5/16 lock washer and (2) 8mm bolts in the clip nuts.

Leave all brackets loose until the end.

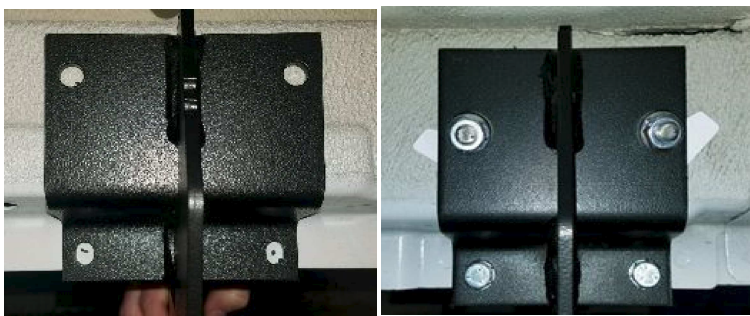
Repeat for 2nd bracket

Step5

Moving to the driver side, locate monting locations using Fig 2 and Fig 4.



Step 6



Repeat step 1-4 for installing the **front driver side bracket**.

Step7

Assemble the AC bracket using the (2) M8 Bolts, (2) 5/16 washers, (2) M8 nuts.



Step8

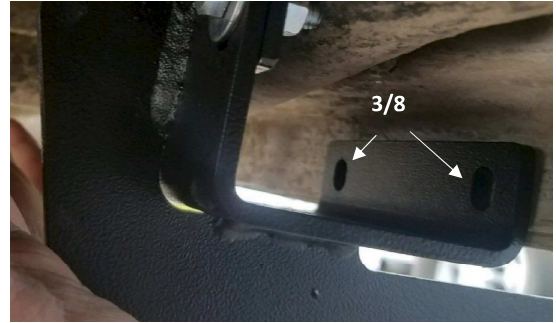
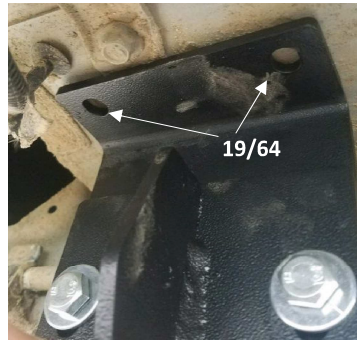


After assembling the AC bracket place along the pinch seam using Fig. 2 and Fig. 4 marking the 4 hole locations

Step 9

Drill the 2 upper holes with a 19/64 drill bit and the bottom 2 with a 3/8 drill bit

NOTE: THE 2 TOP HOLES WILL USE SELF THREADING BOLTS.



Step 10



Slide 2 clip nuts on the pinch weld for lower holes. Attach the AC bracket using (2) 8MM Bolts and (2) 5/16 Lock Washers on the bottom Clip Nuts and (2) 5/16 Thread Cutting Bolt and (2) 5/16 lock washers on the upper holes.

Step 11

Leave ALL brackets Loose at this time. Please Review the installation instructions that are included in your step assembly for specific details. Place step board on brackets tighten all brackets so the board is level.

PARTS LIST
FOR MOUNTING 401720 MEGA STEP BRACKETS
2015 AND NEWER FORD TRANSIT VAN

SERVICE PARTS LIST

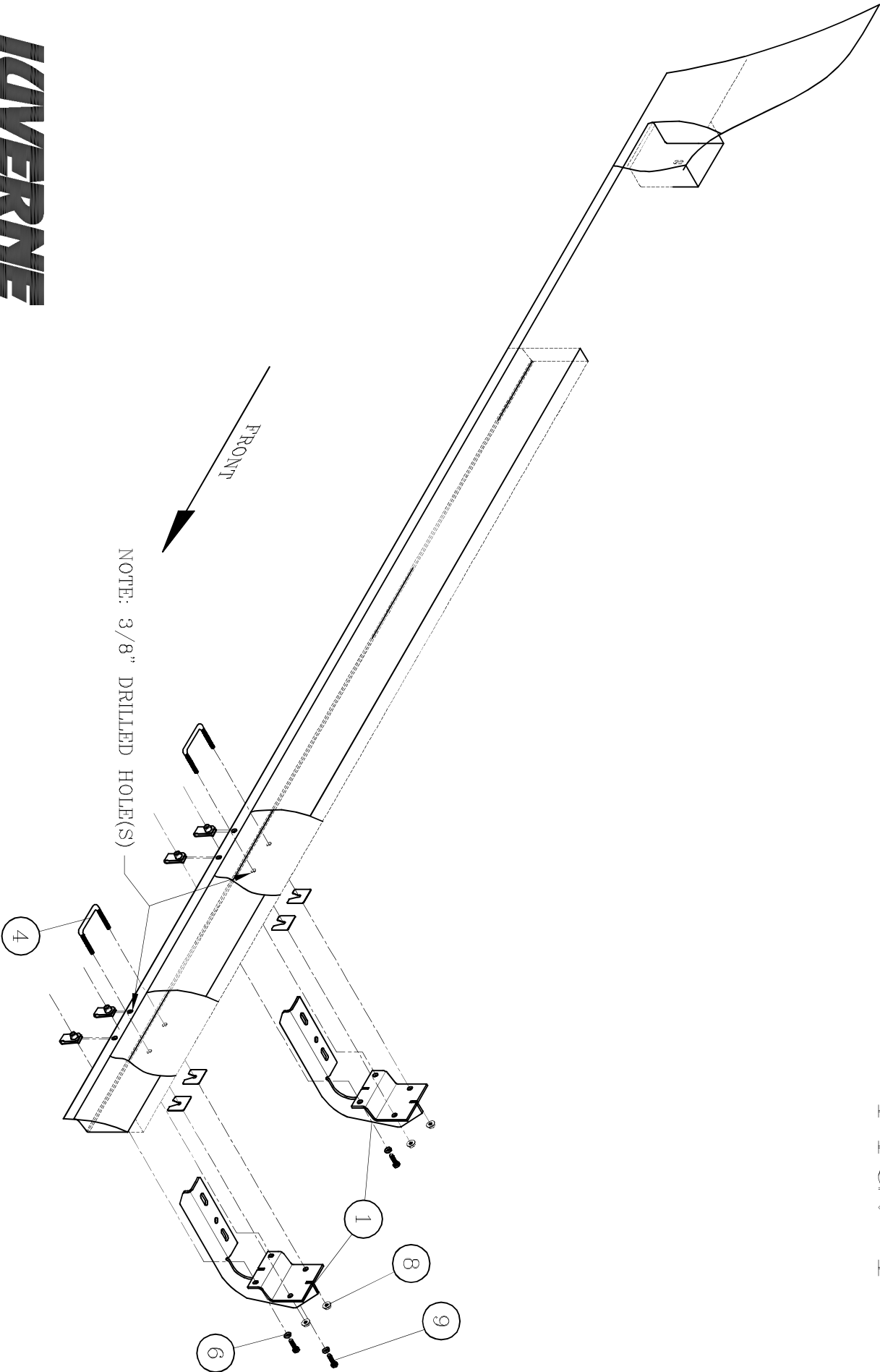
ITEM	PART NO.	QTY	DESCRIPTION
1	553193	3	FRONT MOUNTING BRACKET
2	553202	1	AC MOUNTING BRACKET
3	553212	1	AC TOP MOUNTING BRACKET
4	101795	3	U-BOLT 3.00
5	101572	6	BOLT RETAINER
6	100030	10	5/16 LOCK WASHER
7	100034	2	5/16 WASHER
8	105859	8	M8 FLANGE NUT
9	102549	10	M8 HEX BOLT
10	101566	8	M8 CLIP NUT
11	109177	2	5/16 THREAD CUTTING BOLT



SERVICE PARTS LIST

BRACKET NO. - 401720

FIG. 1



-RIGHT (PASSENGER) SIDE SHOWN-

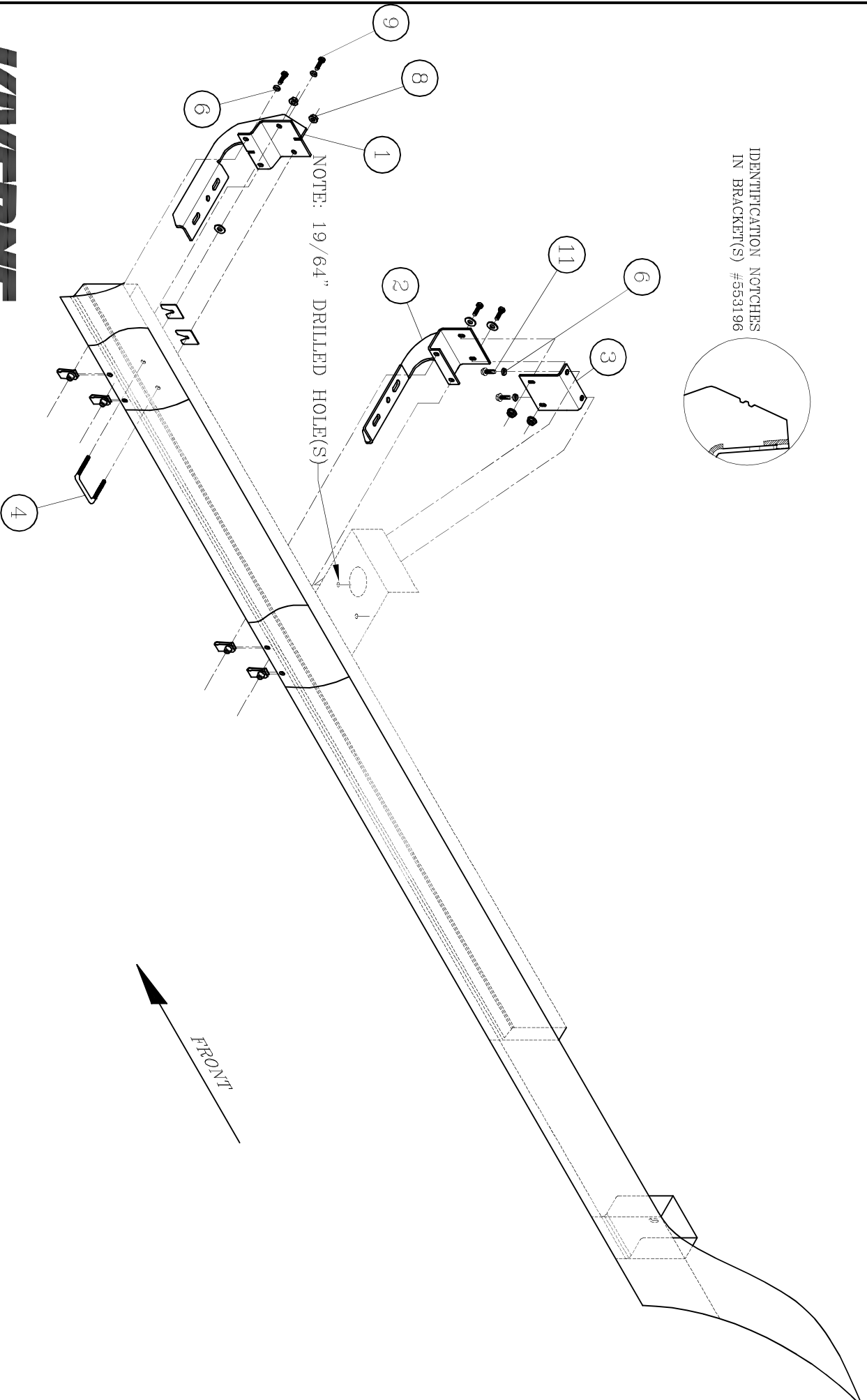
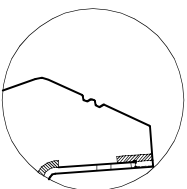


SERVICE PARTS LIST

BRACKET NO. - 401720

FIG. 2

IDENTIFICATION NOTCHES
IN BRACKET(S) #553196



NOTE: 19/64" DRILLED HOLE(S)

FRONT



-LEFT (DRIVER) SIDE OPPOSITE-

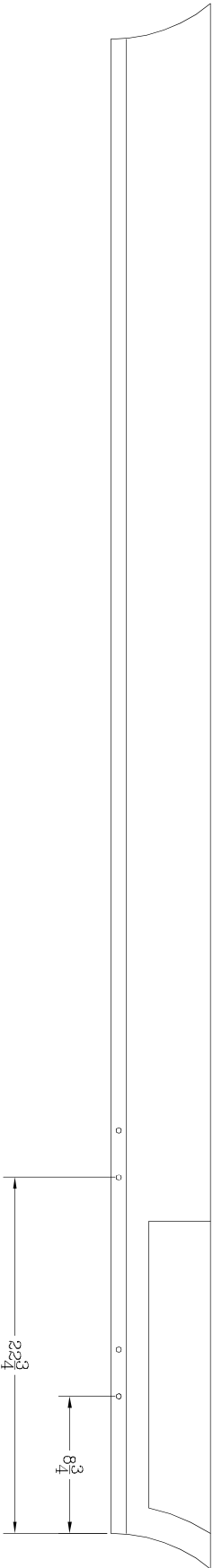
SERVICE PARTS LIST

BRACKET NO. – 401724

FIG. 3

– RIGHT (PASSENGER) SIDE SHOWN –

NOTE:
THESE DIMENSIONS MAY NEED TO BE ADJUSTED FORWARD, OR BACKWARD
TO AVOID DRILLING THROUGH SPOT WELDS IN THE PINCH SEAM.



FRONT
→



SERVICE PARTS LIST

BRACKET NO. – 401720

FIG. 4
–LEFT (DRIVERS) SIDE SHOWN–

NOTE:
THESE DIMENSIONS MAY NEED TO BE ADJUSTED FORWARD, OR BACKWARD
TO AVOID DRILLING THROUGH SPOT WELDS IN THE PINCH SEAM.

