

INSTALLATION INSTRUCTIONS AND PARTS LIST
MODEL 477054, 477060 REGAL 7 OVAL STEPS (BOARDS ONLY)
UNIVERSAL APPLICATIONS



1. Read instructions completely and check to make sure that all required parts (listed on the service parts list) are on hand before starting the installation.
2. Follow the instructions included with the specific bracket package that you are using to mount the brackets to your vehicle. The serial number label is located on the front inside drivers side step assembly.
3. The step is pre-assembled from the factory. The serial number label is located on the front inside drivers side step assembly.
- 4.
5. Attaching the step to the mounting bracket:
 - 4.1 Set the step on the mounting brackets, and slide each support mounting plate (item #9) inside the oval step and above each bracket.
 - 4.2 Using the supplied 5/16-18 x 1" black stainless steel hex bolt, washer, and serrated flange nut (items # 10,11&12) attach the step assembly, support mounting plate and mounting bracket.
 - 4.3 Set the step plate in the correct position and tighten all fasteners.
Torque all 5/16" fasteners to 19 LB FT.

SERVICE PARTS LIST

ITEM	PART NO.	QTY	DESCRIPTION
1&2	552054	2	REGAL 7 OVAL STEP, LH,RH,52",477054
1&2	552055	2	REGAL 7 OVAL STEP, LH,RH,58",477060
3	109233	2	END CAP LH REAR, RH FRONT,BLK PLASTIC
4	109232	2	END CAP RH REAR, LH FRONT,BLK PLASTIC
5	107863	8	BOLT-CARRAIGE, 10-24 X 0.50,SST, BLACK
6	108909	2	STEP PAD, 25" X 6.5", PLASTIC, BLACK
7	108908	12	BOLT-CARRAIGE, 10-24 X 1.0,SST, BLACK
8	107864	12	NUT-NYLOCK, 10-24, SST
9	552052	6	SUPPORT MTG PLT, 11 GA, GALV
10	106997	12	SCREW-HEX HD, 5/16-18X1.0,SST,BLACK
11	106998	12	WSHR-FLAT, 5/16, SST, BLACK
12	102680	12	NUT-SER FLG, 5/16-18, SST



(A LUVERNE Company)

1200 E. Birch St.

Brandon, SD 57005

REV A 31JUL12
552058 SHEET 1 OF 2 27FEB12

INSTALLATION INSTRUCTIONS AND PARTS LIST

MODEL 400751 STEP BRACKETS:

2007 AND NEWER TOYOTA TUNDRA REGULAR CAB PICKUPS



1. READ INSTRUCTIONS COMPLETELY AND CHECK TO MAKE SURE THAT ALL REQUIRED PARTS (LISTED ON SERVICE PARTS LIST) ARE ON HAND BEFORE STARTING THE INSTALLATION.

2. ATTACH THE MOUNTING BRACKETS TO THE VEHICLE USING EXISTING MOUNTING HOLES ON THE INTERIOR WALL OF THE ROCKER PANEL. NOTE: THE BRACKETS MUST BE PLACED IN THE PROPER POSITION, SEE FIG. 1.
 - 2.1. POSITION THE BRACKETS ON THE VEHICLE SO THAT BOTH HOLES LINE UP WITH THE THREADED INSERTS IN THE ROCKER PANEL. ATTACH THE TOP OF THE BRACKET WITH A M8-1.25 X 25MM ZINC PLATED HEX HEAD CAP SCREW, 5/16" FLAT WASHER AND LOCK WASHER (ITEMS #3, #4 & #5). LEVEL THE BRACKETS AND TIGHTEN THE FASTENERS TO 19 LB FT.

3. ATTACHING THE STEP ASSEMBLY:
PLEASE REVIEW THE INSTALLATION INSTRUCTIONS THAT ARE INCLUDED IN YOUR STEP ASSEMBLY FOR SPECIFIC DETAILS.

SERVICE PARTS LIST

ITEM	PART NO.	QTY	DESCRIPTION
1	551985	2	BRKT- MTG, STEP,FRNT, TOYOTA TUNDRA
2	551987	2	BRKT- MTG, STEP,REAR, TOYOTA TUNDRA
3	102549	8	SCREW-M8-1.25X25MM,ZP
4	100030	8	WHSR-LOCK, 5/16" ZP
5	100034	8	WHSR-FLAT, 5/16" ZP



(A LIVERNE Company)

1200 E. Birch St.

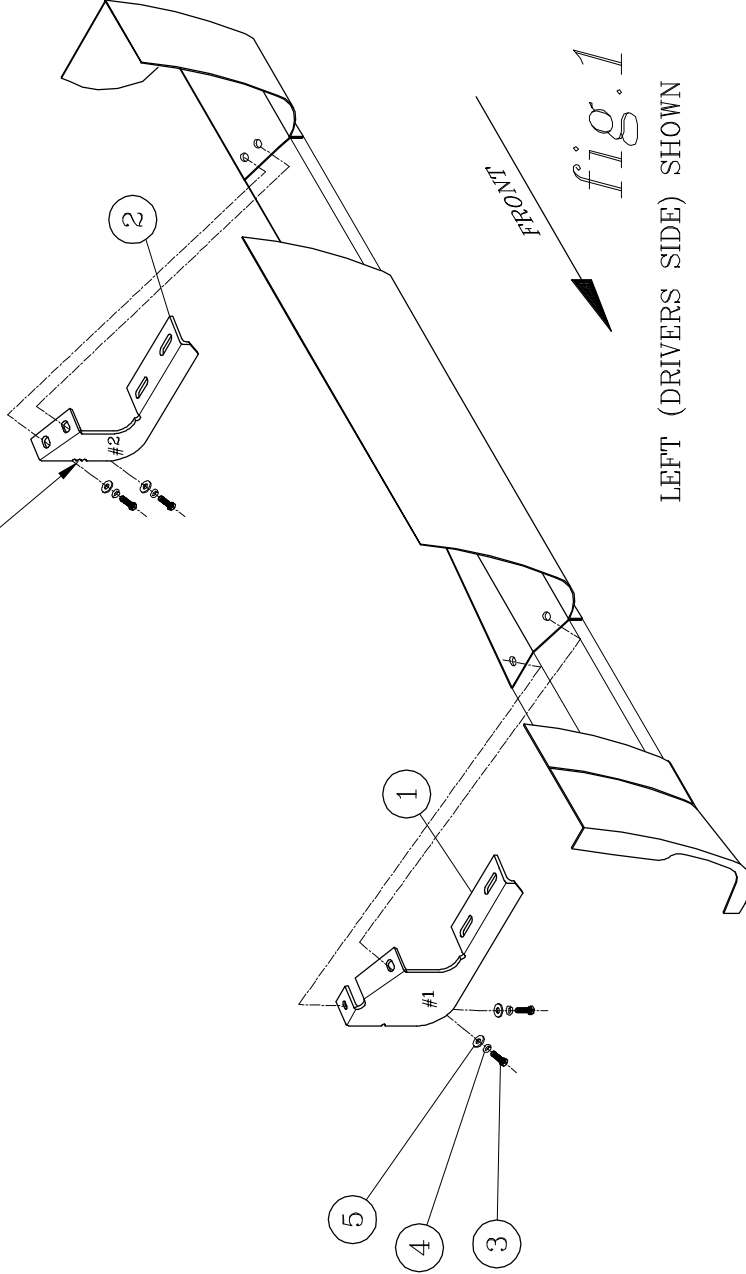
Brandon, SD 57005

551991 SHEET 1 03APR12

SERVICE PARTS LIST

MODEL NO. - 400751

NOTE: BRACKETS HAVE NOTCHES IN THE BACK SIDE EDGE, THE BRACKETS WITH 1 NOTCH GO ON THE FRONT, AND THE BRACKETS WITH 3 NOTCHES GO ON THE REAR.

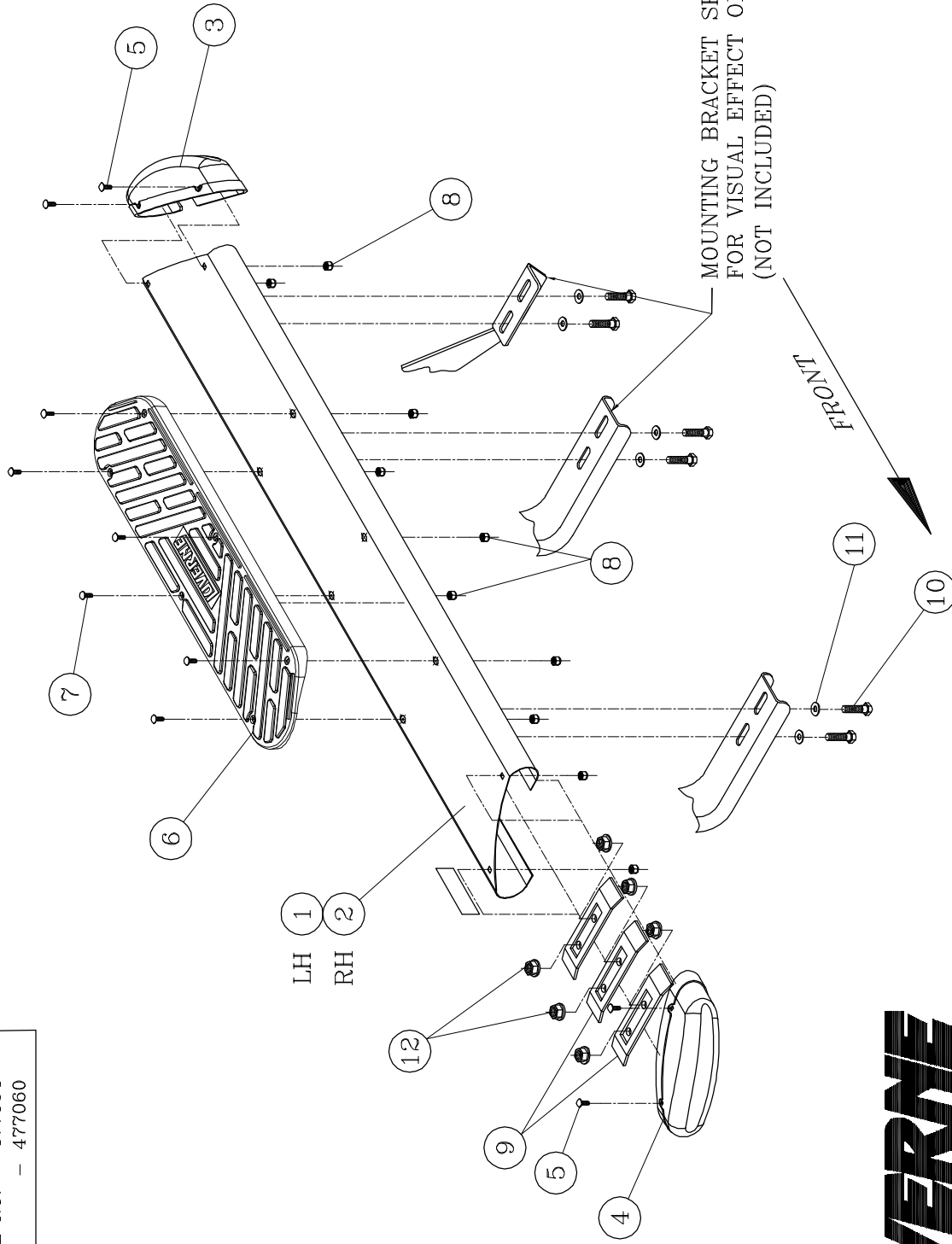


LIVERNE
EQUIPMENT COMPANY
(A LIVERNE COMPANY)

12801 E. 84th St. | Franklin, OH 43085

SERVICE PARTS LIST

MODEL NO. - 477054
 - 477060



LIVERNE
 TRUCK EQUIPMENT
 (A LIVERNE Company)

1200 E. Birch St.
 Brown, SD 57005