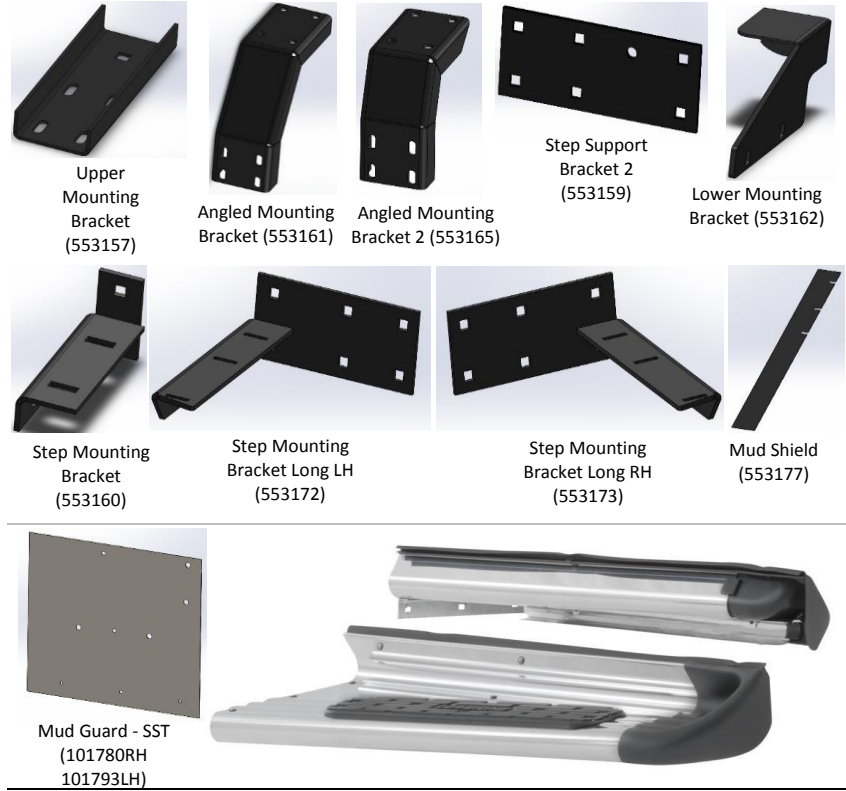


Parts List	
2	Box Extension Step Plate
4	Upper Mounting Bracket
2	Angled Mounting Bracket
2	Angled Mounting Bracket 2
4	Step Mounting Bracket
1	Step Mounting Bracket Long LH
1	Step Mounting Bracket Long RH
2	Step Support Bracket 2
2	Lower Mounting Bracket
2	Mud Shield
1	Mud Guard - SST LH
1	Mud Guard - SST RH
2	Double Ended Stud, 3/8-16 x 10"
2	Washer, 3/8" ID
24	Carriage Bolt, 3/8-16 x 1"
34	Mud Guard - SST RH+B17:H35
4	Hex Bolt, 3/8-16 x 7/8"
4	Clipped Head Carriage Bolt, 5/8-11 x 1.5"
8	Fender Washer, 3/4" ID
4	Flange Nut, 5/8-11
16	Hex Bolt, 1/2-13 x 1"
16	Flange Nut, 1/2-13
14	Carriage Bolt, #10-24 x .75"
16	Flange Nut, #10-24
8	Flat Washer, Neoprene
2	Washer, .354 x 1.0 x .748" Rubber
2	Screw-TEK, SEMS #8 x 1.0" Black
2	Washer, 1/4" ID
2	Flange Nut, 1/4-20
2	Hex Bolt, 1/4-20 x 3/4"

Level of Difficulty
Easy

Product Image



Notes and Maintenance
Before you begin installation, read all instructions thoroughly.
Make sure all required parts are on hand before starting the installation.

Tools Required			
Socket, 3/8"	Wrench, 9/16"	Ratchet	Drill
Socket, 9/16"	Wrench, 15/16"	Rubber Mallet or Impact Wrench	
Socket, 3/4"	Wrench, 1-3/16"		
Socket, 10mm	Wrench, 1-1/4"		
Socket, 7/16"	Wrench, 10mm		

Step 1

Starting on the driver side, locate the frame cross member openings above the spring shackle. Clean any debris from inside the openings.



Step 2



Install the 5/8" clipped head carriage bolt through the upper mounting plate, then install the (2) - 3/4" washers on the carriage bolt along with the 5/8" flange nut. Screw nut down until there is a 1/8" gap between the carriage bolt head and bottom of the upper mounting plate. Align the clipped sides with the bent sides of the bracket and draw a line indicating the direction on the carriage bolt head.

Step 3

Insert the upper mounting brackets into the frame cross member openings until the carriage bolt drops into the opening in the cross members. Then pull the bracket towards the outside of the truck until the carriage bolt is in contact with the end of the slot.



Step 4



Loosen the flange nut enough to allow the carriage bolt to turn. Rotate carriage bolt 90 degrees then tighten with 15/16" wrench. The black line drawn on the bolt should be used as a visual and a mirror may be needed to see the bolt. The bracket end should be parallel with the side of the truck box.

Tip - Use the 15/16" wrench to help turn the bolt into position, then pull down on the bracket to put pressure on the bolt until it has been tightened enough to engage the square hole again.

Step 5

Loosen the spring shackle bolt until there is a 1/4" gap towards the outside of the truck using a 1 1/4" and 1 3/16" wrench or impact socket. **DO NOT REMOVE THE SPRING SHAKLE BOLT.**

Then insert the lower support bracket. Tighten the spring shackle bolt enough to keep the lower support bracket from falling off.



Step 6



Install the Mud Shield (101780) on the top surface of the box rocker panel by loosening the 3 existing 10mm bolts that retain the bottom of the fender flare and slide the Mud Shield under the washer and nuts.

At the front, install a TEK Screw thru the box rocker panel and Mud Shield.

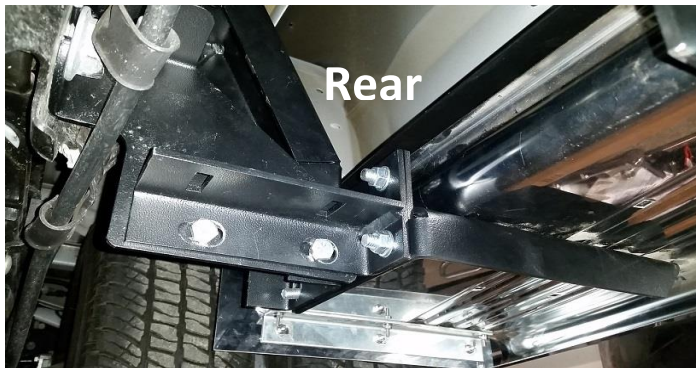
Step 7

Attach the angle support brackets to the upper mounting brackets by inserting a 1/2" hex bolt through the angle support bracket hole and upper mounting bracket slot then hand tighten a 1/2" flange nut on the bolt. Repeat for remaining 3 holes in each bracket.

****Angled Mounting Bracket 2 (shorter) goes towards the front of the vehicle****



Step 8

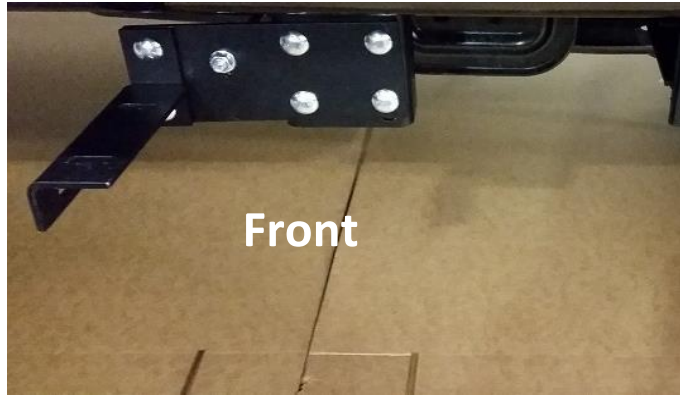


Attach the rear step mounting bracket by inserting a 3/8" carriage bolt through the Step Mounting Bracket Long LH and Angle Support Bracket slot. Hand tighten a 3/8" flange nut on the bolt. Repeat for the remaining 3 holes.

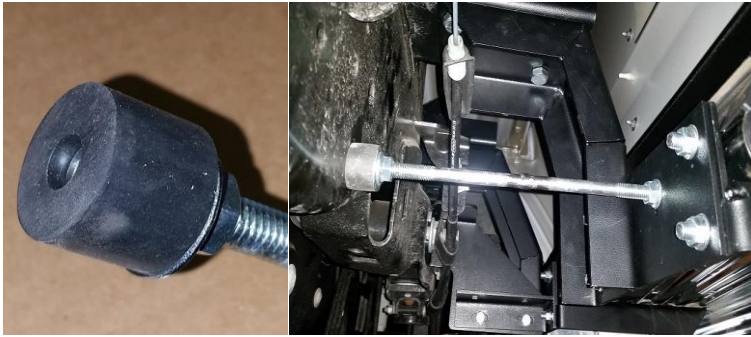
Then attach a Step Mounting Bracket to the back side of the Step Mounting Bracket Long LH by inserting a 3/8" carriage bolt through the Step Mounting Bracket Long LH then the Step Mounting Bracket. Hand tighten a 3/8" flange nut on the bolt. Do this for both holes. Attach the back side Step Support Bracket to the Lower Mounting Bracket using (2) 3/8" hex bolts inserted through the Step Mounting Bracket slots and Lower Mounting Bracket slots. Hand tighten (2) 3/8" flange nuts to the bolts.

Step 9

Attach the front Step Mounting Bracket by inserting a 3/8" carriage bolt through the Step Support Bracket 2 and Angle Support Bracket 2 slot. Hand tighten a 3/8" flange nut on the bolt. Repeat for the remaining 3 holes. Then insert a 3/8" carriage bolt through the Step Mounting Bracket top and bottom mounting holes and Step Support Bracket 2. Hand tighten a 3/8" flange nut on each bolt.



Step 10



Assemble the load reaction stud by threading a 3/8" flange nut backwards onto one side of the double ended stud, flange side should be toward the end of the stud. Then a 3/8" flat washer and the rubber washer. Adjust the flange nut until the end of the stud is recessed back in the hole of the rubber washer approximately 3/16". Then thread a 3/8" flange nut backwards onto the opposite end of the stud. Insert the stud through the Step Support Bracket 2 and install a 3/8" flange nut. Leave loose at this time.

Step 11

Set the step plate in position on the Step Mounting Brackets. Insert (4) #10-24 carriage bolts through the neoprene washers, Step Plate and Step Mounting Brackets. Hand tighten a #10 flange nut on each bolt including the bolt hidden by the plastic step pad.



Step 12



Top Inboard Hole

Remove the factory plastic retainers and screw from the front wheel well plastic guard. Remove the vinyl protection and position the Mud Guard with the vinyl removed side facing the step and re install all factory fasteners through the Mud Guard, factory plastic guard and into the wheel flair except the top inboard hole. For the top inboard hole insert a 1/4" hex bolt through the 1/4" washer, Mud Guard, factory plastic guard and box rocker panel hole and secure with 1/4" flange nut.

Step 13

Insert (3) #10 carriage bolts through the Mud Guard and pre attached step angle bracket. Hand tighten #10 flange nuts on the bolts.



Step 14

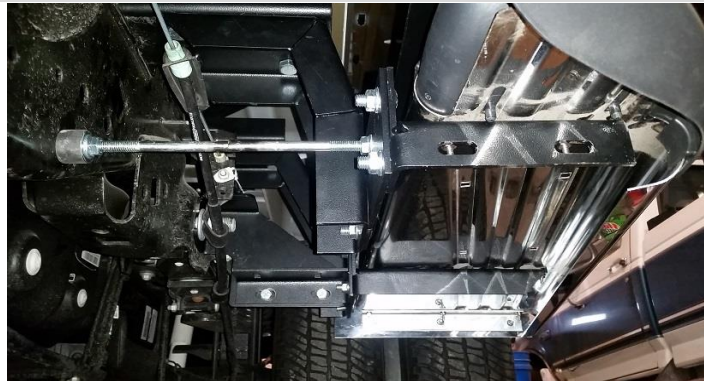


Adjust the height and alignment with the cab Side Entry Step. Tighten all fasteners except the double ended stud securely starting by the vehicle frame and working towards the step pad.

Step 15

Position the stud assembly so that the rubber washer is snug up against the side of the frame. Insure that the threaded stud will not make contact with the side of the frame. Tighten the 3/8" flange nuts on either side of the bracket to lock the stud assembly in position.

Repeat steps 1-15 for the passenger side. Mounting brackets will be a mirror image of the drivers side installation.



PARTS LIST
FOR MOUNTING 481724 SIDE ENTRY STEP BOX EXTENSIONS
2017 AND NEWER FORD SUPER DUTY LONG BOX DUALLY PICKUPS

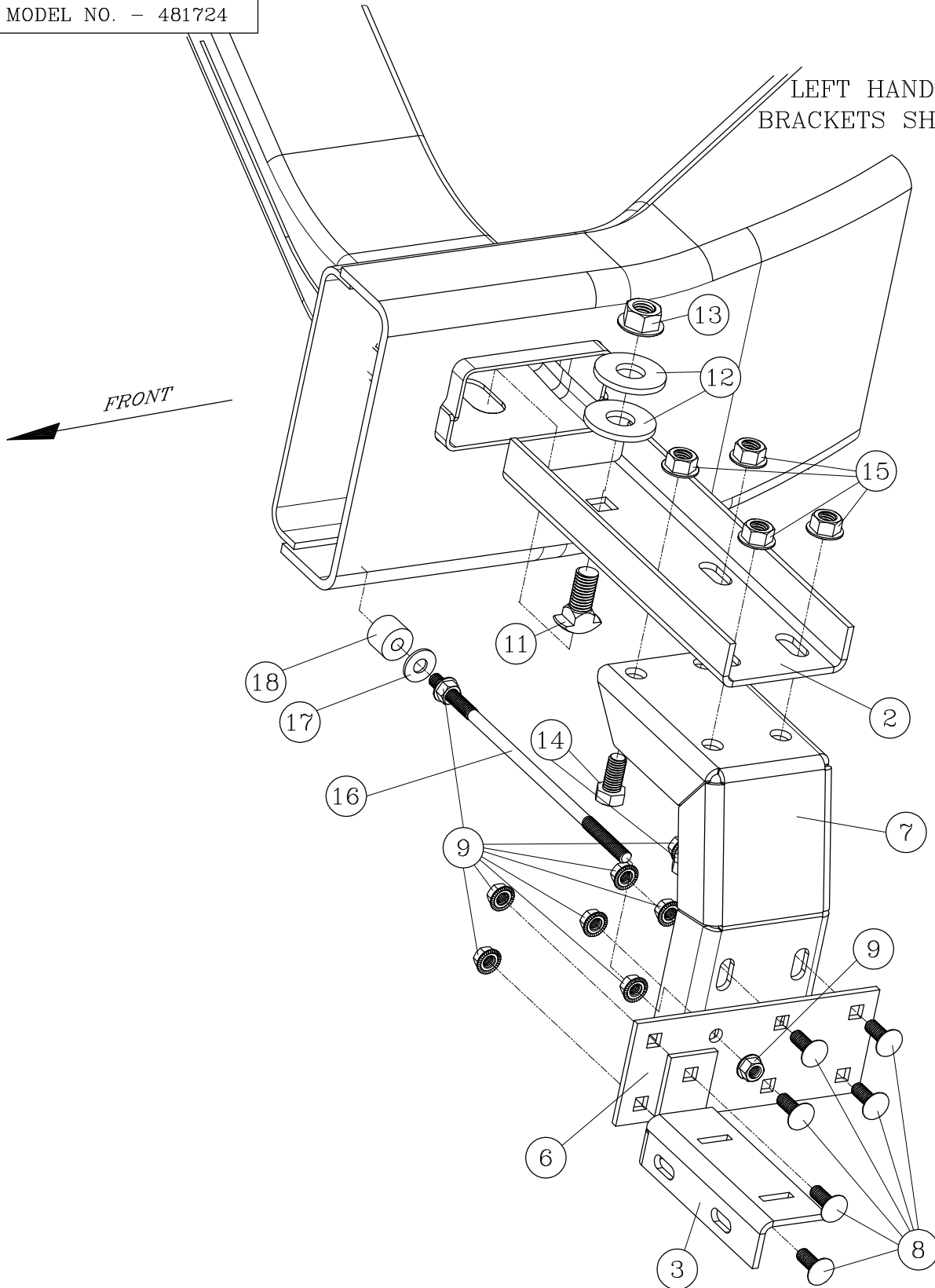
SERVICE PARTS LIST

ITEM	PART NO.	QTY	DESCRIPTION
1	553172	1	STEP SUPPORT BRACKET LONG LH
2	553157	4	UPPER MOUNTING BRACKET
3	553160	4	STEP MOUNTING BRACKET
4	553161	2	ANGLED MOUNTING BRACKET
5	553162	2	LOWER MOUNTING BRACKET
6	553159	2	STEP SUPPORT BRACKET 2
7	553165	2	ANGLED MOUNTING BRACKET 2
8	100053	24	3/8-16 X 1 CARRIAGE BOLT
9	100181	34	3/8-16 SERRATED FLANGE NUT
10	102736	4	3/8-16 X 7/8 HEX HEAD BOLT
11	101768	4	5/8-11 X 1.5 CLIPPED HEAD CARRIAGE BOLT
12	100153	8	3/4 ID FENDER WASHER
13	105643	4	5/8-11 SERRATED FLANGE NUT
14	100085	16	1/2-13 X 1 HEX HEAD BOLT
15	100123	16	1/2-13 SERRATED FLANGE NUT
16	101767	2	3/8-16 X 10 DOUBLE ENDED STUD
17	100062	2	3/8 ID WASHER
18	102592	2	.354 X 1.00 X .748 RUBBER WASHER
19	553173	1	STEP SUPPORT BRACKET LONG RH
20	553177	2	MUD SHIELD
21	101780	1	MUD GUARD-SST RH
22	100006	2	1/4-20 x 3/4" HEX HEAD BOLT
23	100012	2	1/4-20 SERRATED FLANGE NUT
24	100016	2	1/4 ID WASHER
25	104258	14	#10-24 X 3/4" CARRIAGE BOLT
26	104261	16	#10-24 SERRATED FLANGE NUT
27	104530	8	NEOPRENE FLAT WASHER
28	103435	2	#8 X 1.0" BLACK TEK SEMS SCREW
29	549292	1	STEP PLATE-SES,LH, FORD S.D.,LONG BOX DUALLY
30	549290	1	STEP PLATE-SES,RH, FORD S.D.,LONG BOX DUALLY
31	547319	2	MUD GUARD TRIM
32	101793	1	MUD GUARD-SST LH

SERVICE PARTS LIST

MODEL NO. - 481724

LEFT HAND SIDE REAR
BRACKETS SHOWN ON PG 8



STEP PLATE NOT SHOWN
SOME FLANGE NUTS AND BOLTS NOT SHOWN

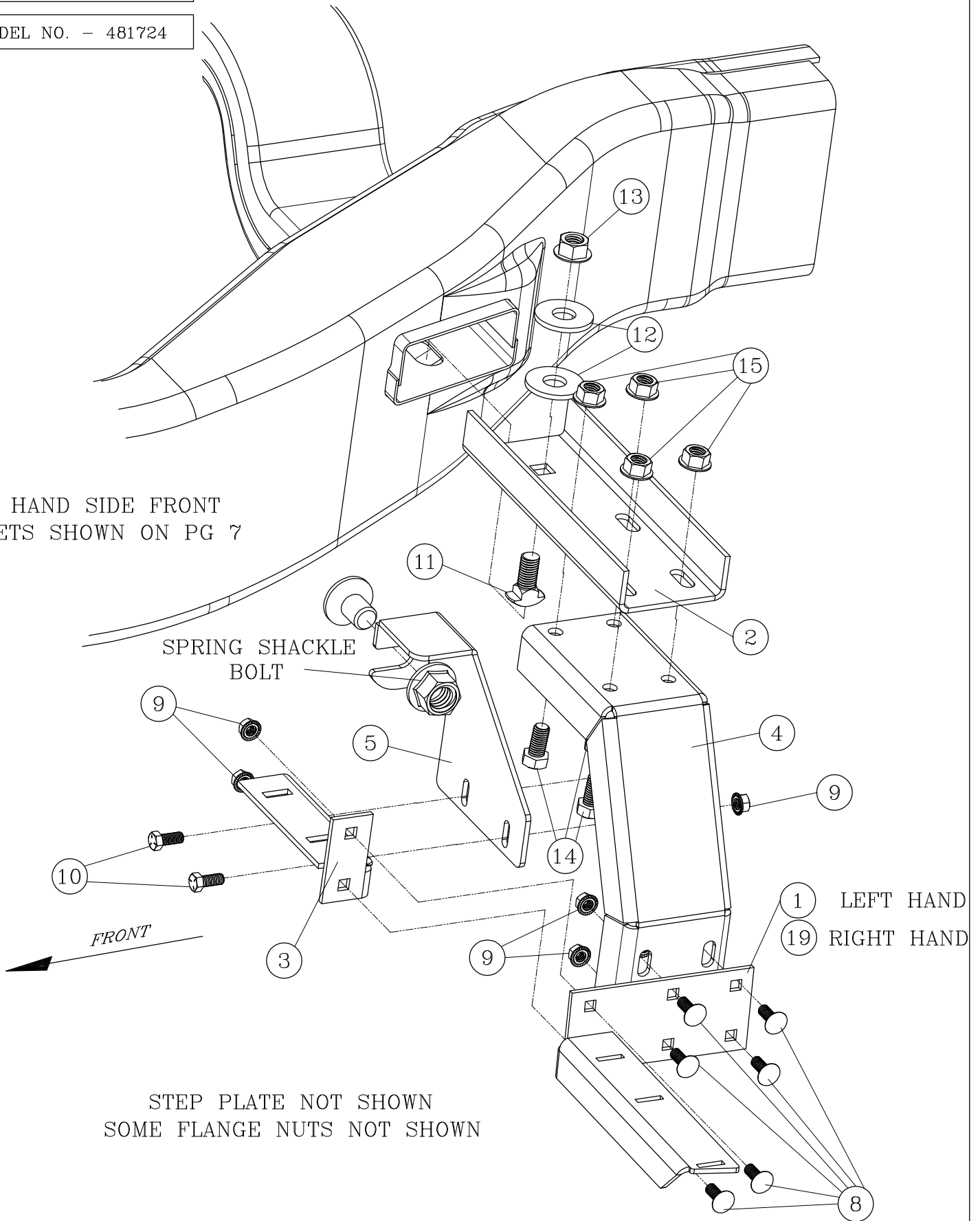
LEFT HAND SIDE FRONT BRACKETS SHOWN

RIGHT HAND SIDE OPPOSITE

SERVICE PARTS LIST

MODEL NO. - 481724

LEFT HAND SIDE FRONT
BRACKETS SHOWN ON PG 7



STEP PLATE NOT SHOWN
SOME FLANGE NUTS NOT SHOWN

LEFT HAND REAR BRACKETS SHOWN
RIGHT HAND SIDE OPPOSITE

SERVICE PARTS LIST

MODEL NO. - 481724

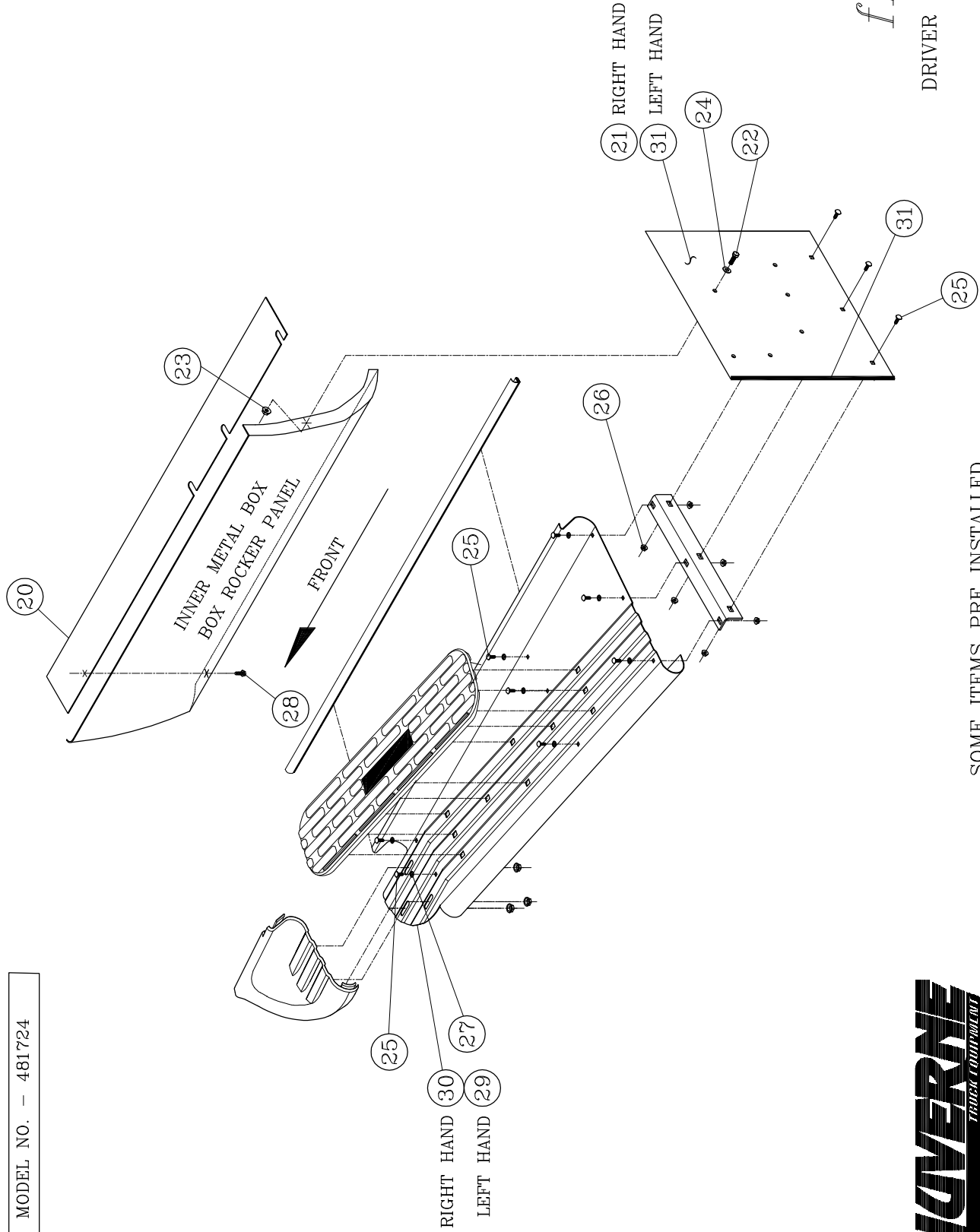


fig. 1

DRIVER SIDE SHOWN

SOME ITEMS PRE INSTALLED

