

INSTALLATION INSTRUCTIONS AND PARTS LIST

FOR MOUNTING FR9922 SST & TB SERIES NERF BARS ON: 1999 AND NEWER FORD RANGER 4X4 EXTENDED CAB 4 DOOR PICKUPS

1. READ INSTRUCTIONS COMPLETELY AND CHECK TO MAKE SURE THAT ALL REQUIRED PARTS (LISTED ON SERVICE PARTS LIST) ARE ON HAND BEFORE STARTING THE INSTALLATION.
2. NERF BAR TUBE AND MOUNTING BRACKET ASSEMBLIES (ITEM #1 & #2) ARE PREASSEMBLED.
3. INSERT THE 1/2"-13 T-BOLT (ITEM #9) INTO THE 1-1/4" DIAMETER HOLE IN THE BOTTOM SUPPORT RAIL OF THE CAB FLOOR. BE SURE TO INSERT THE NUT SIDE FIRST WITH BOLT THREADS PROTRUDING DOWN.
 - 3.1 INSERT THE 3/8-16 HEX BOLTS (ITEM #8) WITH FLAT WASHER (ITEM #3) THROUGH THE 2 SLOTTED HOLES IN THE ROCKER PANEL SUPPORT WALL FOR THE BACK BRACKET.
4. POSITION THE NERF BAR ASSEMBLY UP ONTO THE 3/8-16 BOLTS AND THE 1/2-13 T-BOLT.
 - 4.1 INSTALL THE 1/2-13 NUT AND LOCK WASHER (ITEM #4 & #5) ONTO THE 1/2-13 T-BOLT. HAND TIGHTEN.
 - 4.2 INSTALL THE 1/2-13 BOLT AND LOCK WASHER (ITEM #4 & #7) INTO THE 1/2-13 THREADED END OF THE T-BOLT. HAND TIGHTEN.
 - 4.3 INSTALL THE 3/8-16 HEX NUTS AND WASHER, (ITEM #3 & #6) ONTO THE 3/8-16 BOLTS AND HAND TIGHTEN (NOTE: THE 1/2-13 BOLTS THAT ATTACH THE NERF BAR TO THE BRACKETS MAY HAVE TO BE SLIGHTLY LOOSE TO EASE INSTALLATION).

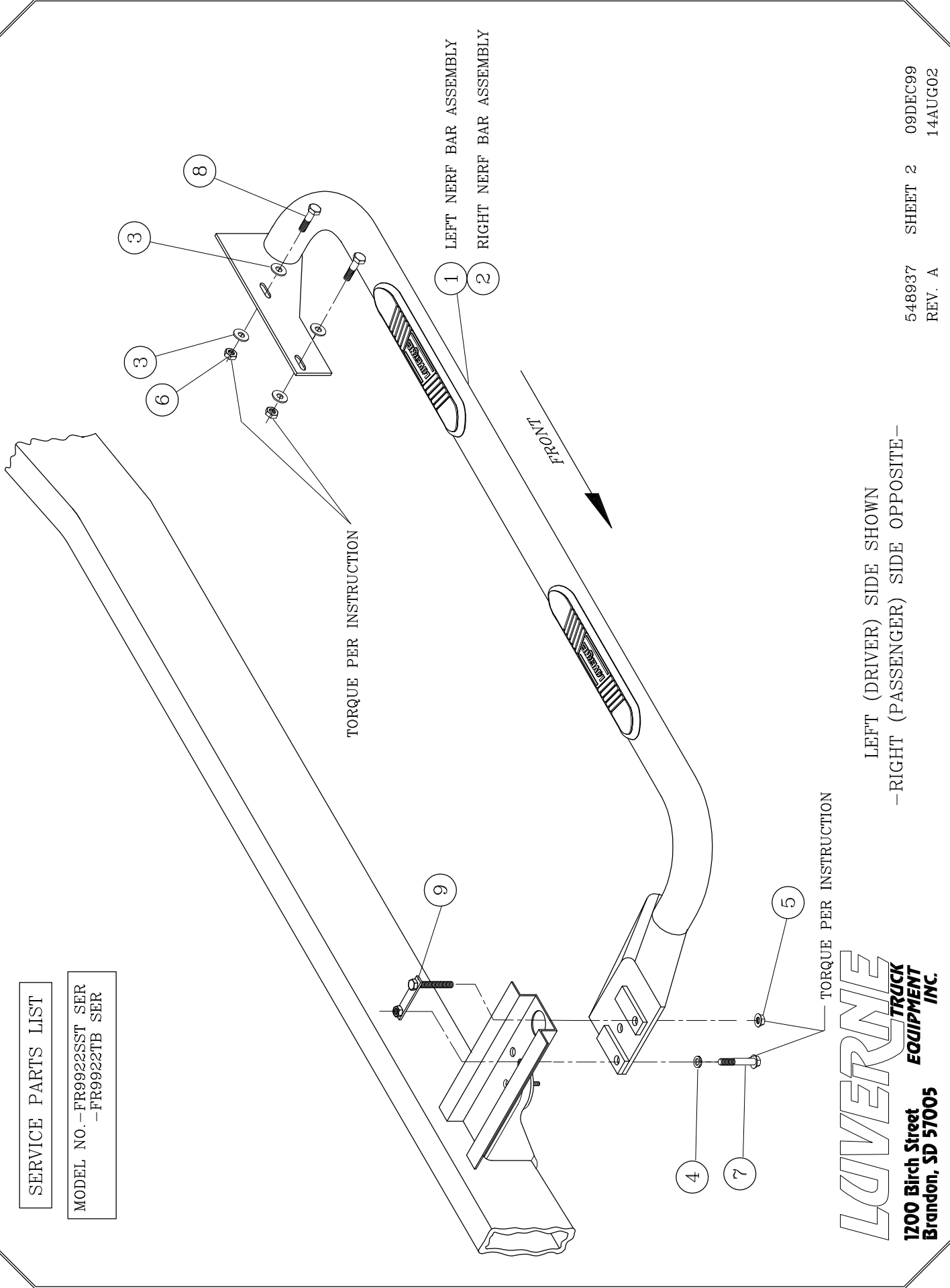
TORQUE ALL 1/2-13 BOLTS TO 65 LB. FT.

TORQUE ALL 3/8-16 BOLTS TO 30 LB. FT.

ITEM #	PART #	QTY	DESCRIPTION
1	548938	1	NERF BAR/BRKT ASSY- LH,SST,FR9922SST
2	548939	1	NERF BAR/BRKT ASSY- RH,SST,FR9922SST
1	548947	1	NERF BAR/BRKT ASSY- LH,STL,BLK,FR9922TB
2	548948	1	NERF BAR/BRKT ASSY- RH,STL,BLK,FR9922TB
3	100062	8	WASHER- FLAT, 3/8", ZP
4	100121	2	WASHER- LOCK, 1/2", ZP
5	100123	2	NUT- SERR FLG,HEX,1/2-13,ZP
6	100181	4	NUT- SERR FLG,HEX,3/8-16,ZP
7	100870	2	SCREW- HEX HD CAP,1/2-13 X 1-3/4,ZP
8	102736	4	SCREW- HEX HD CAP,3/8-16 X 7/8,ZP
9	548914	2	1/2-13 T-BOLT ASS'Y

SERVICE PARTS LIST

MODEL NO. -FR9922SSST SER
-FR9922TB SER



TORQUE PER INSTRUCTION

TORQUE PER INSTRUCTION

LEFT (DRIVER) SIDE SHOWN
-RIGHT (PASSENGER) SIDE OPPOSITE-

LOVERNE
TRUCK
EQUIPMENT
INC.
1200 Birch Street
Brandon, SD 57005