

## INSTALLATION INSTRUCTIONS AND PARTS LIST

VEHICLE APPLICATION: STAINLESS STEEL & STEEL (BLACK) NERF BARS ON:  
1998 AND NEWER FORD LIGHT DUTY F-150 REG & EXT CAB PICKUPS  
2001 AND NEWER FORD LIGHT DUTY F-150 SUPER CREW CAB PICKUPS

1. READ INSTRUCTIONS COMPLETELY AND CHECK TO MAKE SURE THAT ALL REQUIRED PARTS (LISTED ON SERVICE PARTS LIST) ARE ON HAND BEFORE STARTING THE INSTALLATION.
2. THE NERF BARS (ITEMS #1 & #2) AND MOUNTING BRACKETS (ITEMS #3, #4, #5 & #6) ARE PRE-ASSEMBLED TO MATCH THE EXISTING MOUNTING LOCATIONS IN THE VEHICLE. IF ANY ADDITIONAL ADJUSTMENT SHOULD BE REQUIRED, THIS CAN BE ACCOMPLISHED BY LOOSENING THE PRE-TORQUED 1/2 IN. HEX HEAD BOLT THAT RETAINS THE FRONT AND REAR MOUNTING BRACKETS TO THE NERF BAR. IF THE PRE-TORQUE ON THIS 1/2 IN. BOLT IS BROKEN, THE BOLT MUST BE RE-TIGHTENED TO 65 LB. FT
3. EXISTING MOUNTING HOLE PATTERNS ARE LOCATED ON THE INTERIOR WALL AND PINCH WELD OF THE ROCKER PANEL. THESE MOUNTING HOLE PATTERNS MUST BE USED FOR THIS INSTALLATION PER THE FOLLOWING INSTRUCTIONS.
  - 3.1 REMOVE THE FACTORY TAPE THAT COVERS THE FRONT AND REAR MOUNTING HOLE PATTERNS. (THIS TAPE MUST BE RE-INSTALLED OVER THE ACCESS HOLES, LEAVING ONLY THE THREADS OF THE MULTI THREAD U-NUTS UNCOVERED).
  - 3.2 REMOVE THE RUBBER PLUGS FROM THE OBOUND HOLES IN THE FRONT AND REAR BODY STIFFENERS.
  - 3.3 INSTALL 5/16" MULTI THREAD U-NUTS (ITEM #11) IN THE TOP TWO HOLES OF THE FRONT AND REAR INTERIOR WALL MOUNTING HOLE PATTERNS. INSTALL THESE NUTS SO THAT THE THREADS ARE TO THE INSIDE OF THE ROCKER PANEL. (INSERTING THE THREADED HALF OF THE U-NUT THRU THE ACCESS HOLE, AND SLIDING THE U-NUT TOWARDS THE MOUNTING HOLE UNTIL THE NUT SEATS IN THE HOLE DOES THIS).
4. INSTALL THE NERF BAR ASSEMBLY AS FOLLOWS:
  - 4.1 POSITION THE NERF BAR ASSEMBLY UP TO THE ROCKER PANEL SO THAT THE HOLES IN MOUNTING BRACKETS (ITEM #3-#5 OR #4-#6) MATCH THE U-NUTS IN THE HOLE PATTERNS LISTED ABOVE. (IT MAY BE NECESSARY TO TRIM THE FRONT FACTORY URETHANE SHIELD SO THAT THE MOUNTING BRACKET WILL FIT FLAT UP AGAINST THE INTERIOR WALL OF THE ROCKER PANEL).
  - 4.2 HANG THE NERF BAR ASSEMBLY ON THE UPPER BOLTS BY INSERTING 5/16" X 1.00" HEX HD SCREWS (ITEM #9) WITH FLAT WASHERS (ITEM #12) THRU THE HOLES IN THE BRACKET AND ROCKER PANEL.
  - 4.3 INSTALL 5/16" X 1.00" HEX HD SCREWS (ITEM #9) WITH FLAT WASHERS (ITEM #12) UP THRU THE HOLES IN THE PINCH WELD AND THE FLANGES OF THE BRACKETS AND INSTALL 5/16" FLAT WASHERS (ITEM #12) AND 5/16"-18 SERRATED FLANGE NUTS (ITEM #10).
  - 4.4 TIGHTEN THE UPPER BOLTS.
  - 4.5 TIGHTEN THE LOWER SCREWS ON PINCH WELD. (TORQUE ALL 5/16" SCREWS TO 19 LB. FT.).

**NOTE: 1997 MODEL YEAR TRUCKS DO NOT HAVE FACTORY MOUNTING HOLE PATTERNS IN THE ROCKER PANEL. INSTALL NERF BARS ON THIS TRUCK AS FOLLOWS.**

5. POSITION AND CLAMP THE NERF BAR ASSEMBLY UP TO THE ROCKER PANEL.
  - 5.1 INSURE THAT THE TWO BOTTOM HOLES IN EACH MOUNTING BRACKET MAY BE USED AS PILOT HOLES TO DRILL **FULL DIAMETER CLEARANCE HOLES** THRU THE PINCH WELD. **THESE HOLES ARE FOR THE FASTENERS THAT SUPPORT THE LOAD ON THE NERF BAR.** (LOOSENING THE 1/2-13 X 2.00" BOLTS (ITEM #8) FRONT & REAR TO GET SOME BRACKET MOVEMENT AND TRIMMING THE FRONT FACTORY URETHANE SHIELD WILL ALLOW THE BRACKET TO FIT FLAT UP AGAINST THE INTERIOR WALL OF THE ROCKER PANEL).
  - 5.2 USING THE TWO BOTTOM BRACKET HOLES AS PILOTS, DRILL 11/32" **FULL DIA. CLEARANCE HOLES** THRU THE PINCH WELD AND INSTALL 5/16" FASTENERS PER INSTRUCTION #4.3.

**LIVERNE**  
ISO 9001 QS 9000 CERTIFIED TRUCK  
EQUIPMENT  
1200 Birch Street  
Brandon, SD 57005  
INC.

REV C 14JUL04  
REV B 03MAR04  
REV A 28JUL00  
549125 SHEET 1 30JAN00

- 5.3 SCREWS FOR ATTACHING THE TOP OF THE BRACKET TO THE INTERIOR WALL OF THE ROCKER PANEL ARE NOT INCLUDED IN THIS KIT. INSTALLER MUST SUPPLY FOUR (4) 1/4" X 3/4" SCREWS. THESE MAY BE TAPPING (THREAD FORMING) SHEET METAL SCREWS OR SELF-DRILLING TAPPING (TEK) SCREWS. (SEE FULL SCALE DWG. ON SHEET 3).
- 5.4 USING ONE OF THE TWO HOLES NEAR THE TOP OF THE BRACKET, IF REQUIRED, DRILL A 3/16" PILOT HOLE AND INSTALL A TAPPING SCREW (SUPPLIED BY INSTALLER) AND 5/16" FLAT WASHER (ITEM #13).
- 5.5 TIGHTEN THE 5/16" SCREWS ON THE PINCH WELD. (TORQUE THESE SCREWS TO 19 LB. FT.). TIGHTEN THE 1/2" SCREWS THAT FASTEN THE BRACKET TO THE NERF BAR. (TORQUE THESE SCREWS TO 65 LB. FT.).

### SERVICE PARTS LIST

ITEM	PART NO.	QTY	DESCRIPTION
1	549148	1	NERF BAR WLDMT-RH/LH,REG CAB,SST
2	549148	1	NERF BAR WLDMT-RH/LH,REG CAB,SST
1	549153	1	NERF BAR WLDMT-RH/LH,REG CAB,STL(BLK)
2	549153	1	NERF BAR WLDMT-RH/LH,REG CAB,STL(BLK)
1	549158	1	NERF BAR WLDMT-RH,SUPER CAB,SST
2	549159	1	NERF BAR WLDMT-LH,SUPER CAB,SST
1	549168	1	NERF BAR WLDMT-RH,SUPER CAB,STL(BLK)
2	549169	1	NERF BAR WLDMT-LH,SUPER CAB,STL(BLK)
1	549114	1	NERF BAR WLDMT-RH,SUPER CREW,SST
2	549115	1	NERF BAR WLDMT-LH,SUPER CREW,SST
1	549130	1	NERF BAR WLDMT-RH,SUPER CREW,STL(BLK)
2	549131	1	NERF BAR WLDMT-RH,SUPER CREW,STL(BLK)
3	549116	1	MOUNTING BRKT-FRT,RH
4	549117	1	MOUNTING BRKT-FRT,LH (REG & SUPER CAB)
4	549132	1	MOUNTING BRKT-FRONT,LH (SUPER CREW)
5	549118	1	MOUNTING BRKT-REAR,RH,REG & SUPER CREW
6	549119	1	MOUNTING BRKT-REAR,LH,REG & SUPER CREW
5	549160	1	MOUNTING BRKT-REAR,RH,SUPER CAB
6	549161	1	MOUNTING BRKT-REAR,LH,SUPER CAB
7	103950	4	PAD-STEP,NERF BAR,BLK,20"
8	104249	4	SCREW-HHC, SERR FLNG, 1/2-13 X 2.00",ZP
9	100647	16	SCREW-HHC,5/16-18 X 1.00",ZP
10	100178	8	NUT-SERR FLANGE, 5/16"-18
11	104264	8	NUT-U MULTI THD, 5/16"-18 UNC
13	100034	24	WASHER-FLAT,5/16",ZP



REV. C 14JUL04  
 REV. B 03MAR04  
 REV. A 28JUL00  
 549125 SHEET 2 30JAN00

SERVICE PARTS LIST

APPLICATION

1998 AND NEWER FORD LIGHT DUTY  
 F-SERIES REGULAR & SUPER CAB PICKUPS  
 2001 AND NEWER FORD LIGHT DUTY  
 F-SERIES SUPER CREW CAB PICKUPS

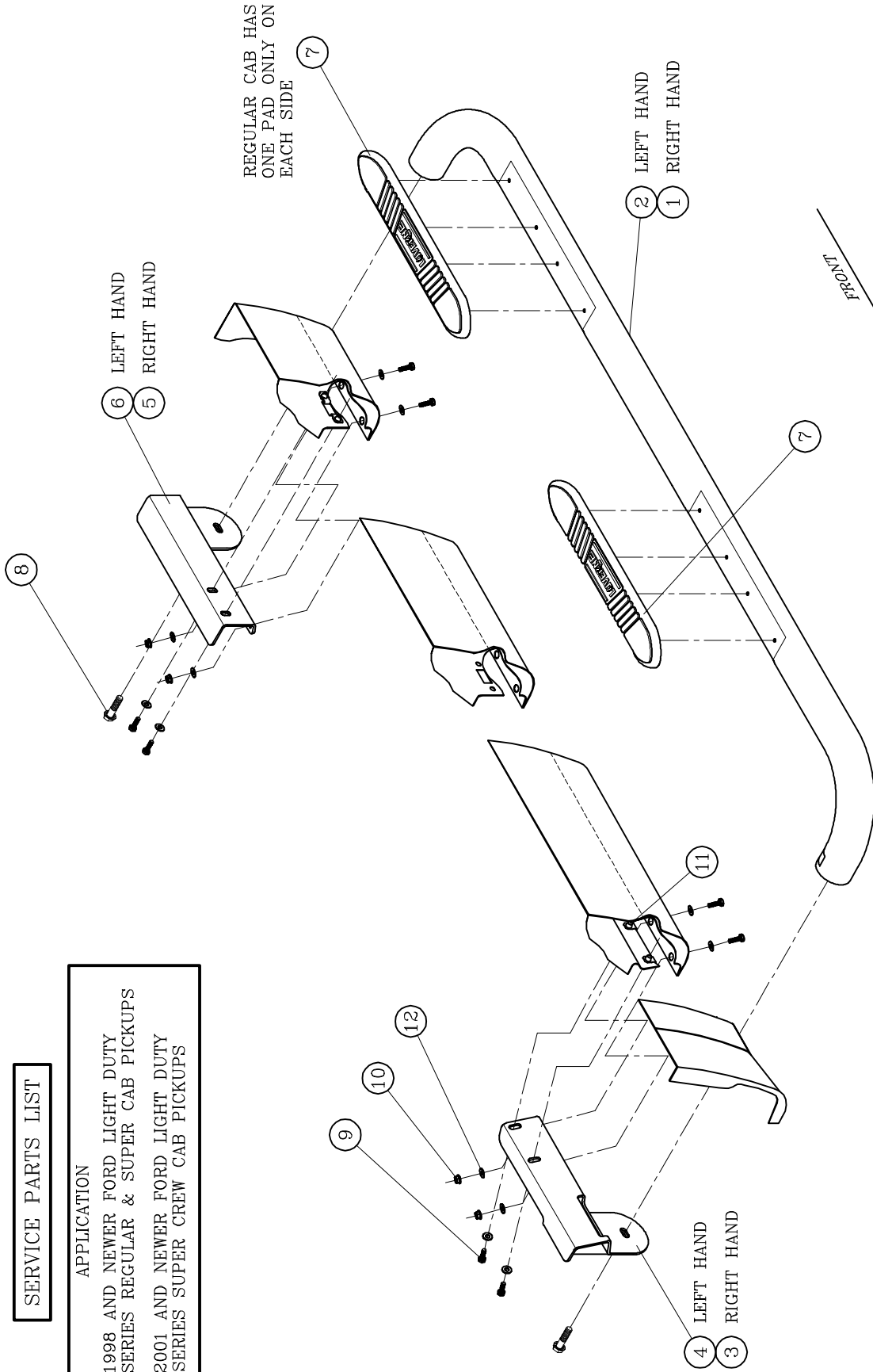
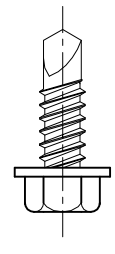


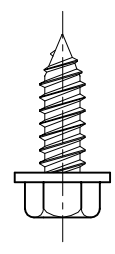
fig.1  
 FRONT

LEFT HAND (DRIVERS SIDE) SHOWN  
 RIGHT HAND (PASSENGERS SIDE) OPPOSITE

REV. C 14JUL04  
 REV. B 04MAR04  
 REV. A 28JUL00  
 549125 SHEET 3 30JAN00



1/4" x 3/4"  
 TAPPING (TEK) SCREW  
 (FULL SCALE)



1/4" x 3/4"  
 TAPPING SCREW  
 (FULL SCALE)