

# INSTALLATION INSTRUCTIONS AND PARTS LIST

INSTALLATION INSTRUCTIONS AND PARTS LIST  
FOR MOUNTING 209922 (STAINLESS STEEL) SIDE ENTRY STEPS ON:  
1999 AND NEWER FORD SUPER DUTY SUPER CAB PICKUPS

1. READ INSTRUCTIONS COMPLETELY AND CHECK TO MAKE SURE THAT ALL REQUIRED PARTS (LISTED ON SERVICE PARTS LIST) ARE ON HAND BEFORE STARTING THE INSTALLATION.
2. PEEL AWAY THE PROTECTIVE VINYL COVERING AND CLEAN THE TOP OF EACH STEP PLATE TO REMOVE ANY VINYL COVERING RESIDUE. RUBBING ALCOHOL OR A GOOD GLASS CLEANER SUCH AS WINDEX IS SUGGESTED.
3. EXISTING MOUNTING HOLE PATTERNS ARE LOCATED ON THE INTERIOR WALL AND PINCH WELD OF THE ROCKER PANEL. THESE MOUNTING HOLE PATTERNS MUST BE USED FOR THIS INSTALLATION PER THE FOLLOWING INSTRUCTIONS.
  - 3.1 ON ALL MOUNTING HOLE PATTERNS, INSTALL 5/16" MULTI THREAD U-NUTS (ITEM #14) INTO THE TOP REAR HOLES. INSTALL THESE NUTS SO THAT THE THREADS ARE TO THE INSIDE OF THE ROCKER PANEL. (THIS IS DONE BY INSERTING THE THREADED HALF OF THE U-NUT THRU THE 3/4" X 1 1/2" RECTANGULAR SLOT AND SLIDING THE U-NUT TOWARDS THE REAR UNTILL THE NUT SEATS IN THE ROUND HOLE.)
  - 3.2 ON THE PINCH WELD MOUNTING HOLES, USE THE REAR HOLE OF THE FRONT PATTERN AND THE FRONT HOLE ON ALL REMAINING PATTERNS. INSTALL THE 5/16" U-NUTS SO THAT THE THREADS ARE TO THE OUTBOARD SIDE OF THE PINCH WELD.
4. POSITION THE SIDE ENTRY STEP ASSEMBLY SNUG UP UNDER THE ROCKER PANEL SO THAT THE HOLES IN THE MOUNTING BRACES (ITEM #5 & #6) MATCH THE U-NUTS IN THE HOLES LISTED ABOVE. INSERT 5/16 X 1.00" BOLTS (ITEM #10) AND 5/16" FLAT WASHERS (ITEM #15) THRU THE BRACE AND INTO THE U-NUTS. (TORQUE THESE BOLTS TO 19 LB FT.

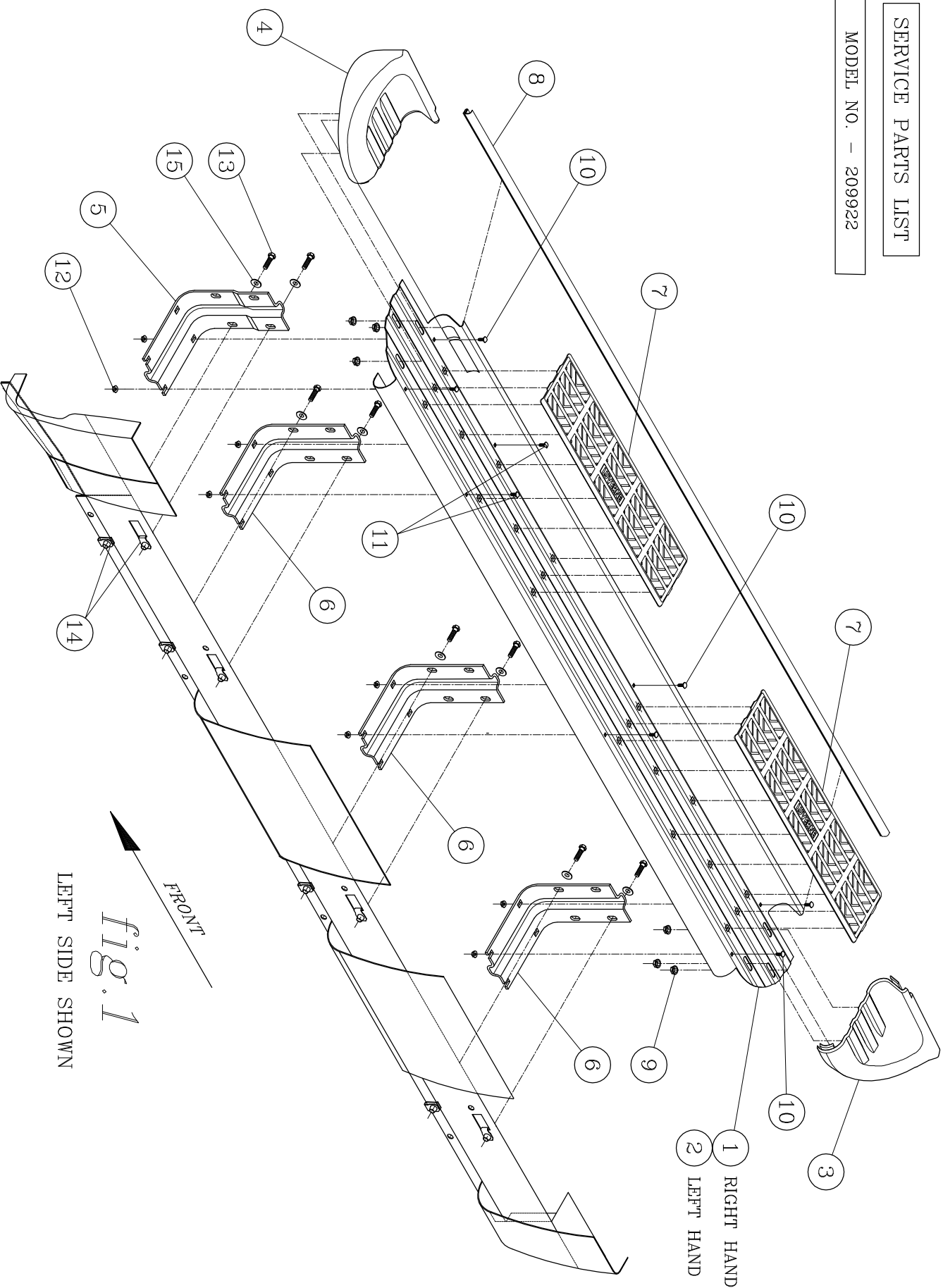
| ITEM | PART NO. | QTY | DESCRIPTION                                |
|------|----------|-----|--|
| 1    | 549245   | 1   | STEP PLATE-RH,FORD SUPER DUTY,EXT CAB      |
| 2    | 549247   | 1   | STEP PLATE-LH,FORD SUPER DUTY,EXT CAB      |
| 3    | 104250   | 2   | END CAP-RH FRONT/LH REAR                   |
| 4    | 104251   | 2   | END CAP-LH FRONT/RH REAR                   |
| 5    | 549233   | 2   | BRACE-SPRT,FORD SUPER DUTY,RH/LH FRONT     |
| 6    | 549235   | 6   | BRACE-SPRT,FORD SUPER DUTY,RH/LH CNTR/REAR |
| 7    | 102600   | 4   | PAD-MLD,STEP PLATE,20.00" LG               |
| 8    | 104255   | 2   | TRIM-SEAL,EXTRN,80.50" LG                  |
| 9    | 104257   | 12  | NUT-HEX,SINGLE SELF THDG,CAP WASHER,1/4"   |
| 10   | 104258   | 12  | BOLT-CARRIAGE,SST,#10-24 X 3/4"            |
| 11   | 104259   | 4   | BOLT-CARRIAGE,CLP HD,SST,#10-24 X 3/4"     |
| 12   | 104261   | 16  | NUT-SERR FLANGE,HEX,SST,#10-24             |
| 13   | 100647   | 16  | SCREW-HEX HEAD CAP,5/16-18 X 1.00"         |
| 14   | 104264   | 16  | NUT-U,MULTI THD,5/16-18                    |
| 15   | 100034   | 16  | WASHER-FLAT,5/16"                          |



REV 10 FEB 99 LEV A  
549243 SHEET 1 OCT 98

SERVICE PARTS LIST

MODEL NO. - 209922



FRONT

fig. 1

LEFT SIDE SHOWN



REV 10 FEB 99 LEV A  
 549243 SHEET 2 SEP 98