

INSTALLATION MANUAL

571720

Mega/Omega Step Bracket kit
2015+ Ford Transit Van Long\Long

Parts List

3	Front Mounting Bracket
1	AC Mounting Bracket
1	AC Top Mounting Bracket
3	U-Bolt 3"
6	Bolt Retainer
10	Lock Washer, 5/16
8	Flange Nut M8
10	Hex Bolt, M8
2	Thread Cutting Bolt 5/16
2	Washer,5/16
8	Clip Nut M8

Level of Difficulty

Easy

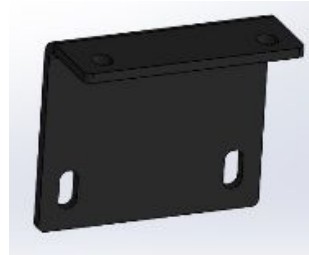
Product Image



Front Mounting
Bracket (553204)



AC Mounting
Bracket (553211)



AC Top
Mounting
Bracket
(553212)

Notes and Maintenance

Before you begin installation, read all instructions thoroughly.

Make sure all required parts are on hand before starting the installation.

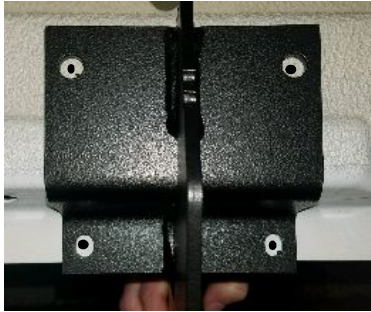
Tools Required

Socket, 1/2"	Ratchet
Wrench, 1/2"	Drill
Flat Screwdriver	Drill Bit, 3/8"
Marker	Drill Bit, 3/32
Putty Knife	Drill Bit, 19/64

Step 1

Starting on the Passanger side, locate mounting locations as shown in Fig 1 and Fig 3.

Hold each bracket in its mounting locations and mark each hole on the rocker and pinch weld.



Step 2

From the under side of the plastic rocker molding use a flat head screw drive to release the bottom push pins.

NOTE: Do not remove plastic trim all the way only release the bottom push pins.



Step 3

Starting on the first bracket using a 3/32" drill bit, drill a pilot hole in each of the marked spots followed by a 3/8" drill bit.

NOTE: Place a Putty knife between the pinch weld and the plastic rocker molding to avoid damaging molding from drilling.



Step 4



Using the 3" U-Bolt put it through the top 2 mounting holes and secure with (2) plastic bolt retainer.

Slide (2) Clip Nuts on the pinch weld for the bottom mounting locations.

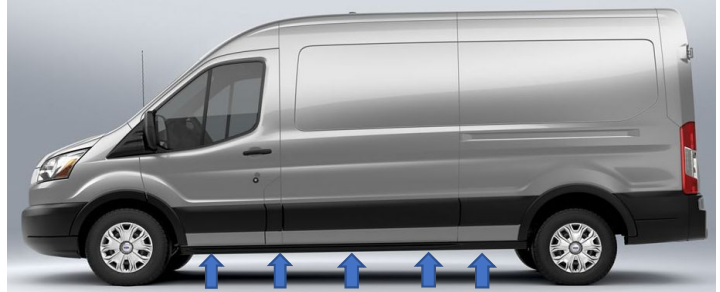
Slide the front mounting bracket on the U-Bolts and secure with (2) 5/16 flat washers (2) 8mm nuts on the studs, and (2) 5/16 lock washer and (2) 8mm bolts in the clip nuts.

Leave all brackets loose until the end.

Repeat for 2nd bracket

Step 5

Moving to the driver side, locate mounting locations using Fig 2 and Fig 4.



Step 6



Repeat steps 1-4 for installing the **front driver side bracket**.

Step 7

Assemble the AC bracket using the (2) M8 Bolts, (2) 5/16 washers, (2) M8 nuts.



Step 8

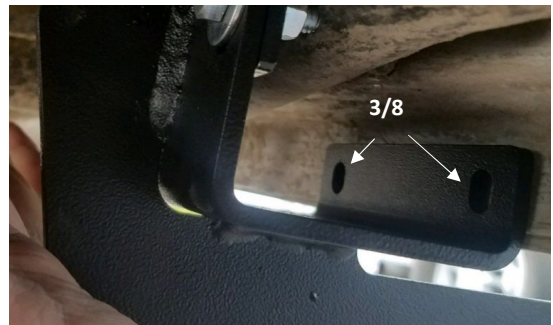
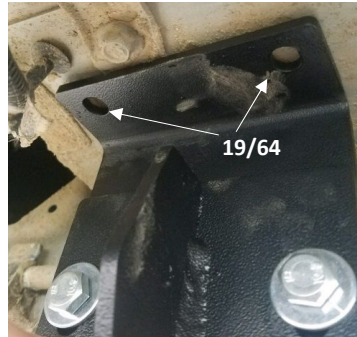


After assembling the AC bracket place along the pinch seam using Fig. 2 and Fig. 4 marking the 4 hole locations

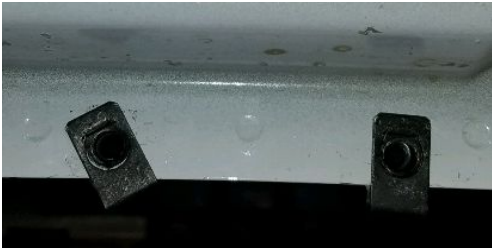
Step 9

Drill the 2 upper holes with a 19/64 drill bit and the bottom 2 with a 3/8 drill bit

NOTE: THE 2 TOP HOLES WILL USE SELF THREADING BOLTS.



Step 10



Slide 2 clip nuts on the pinch weld for lower holes attach the AC bracket using (2) 8MM Bolts and (2) 5/16 Lock Washers on the bottom Clip Nuts and (2) 5/16 Thread Cutting Bolt and (2) 5/16 lock washers on the upper holes

Step 11

Leave ALL brackets Loose at this time. Please Review the installation instructions that are included in your step assembly for specific details. Place step board on brackets tighten all brackets so the board is level.

**PARTS LIST
FOR MOUNTING 571720 MEGA STEP BRACKETS
2015 AND NEWER FORD TRANSIT VAN**

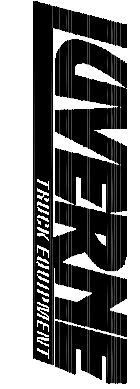
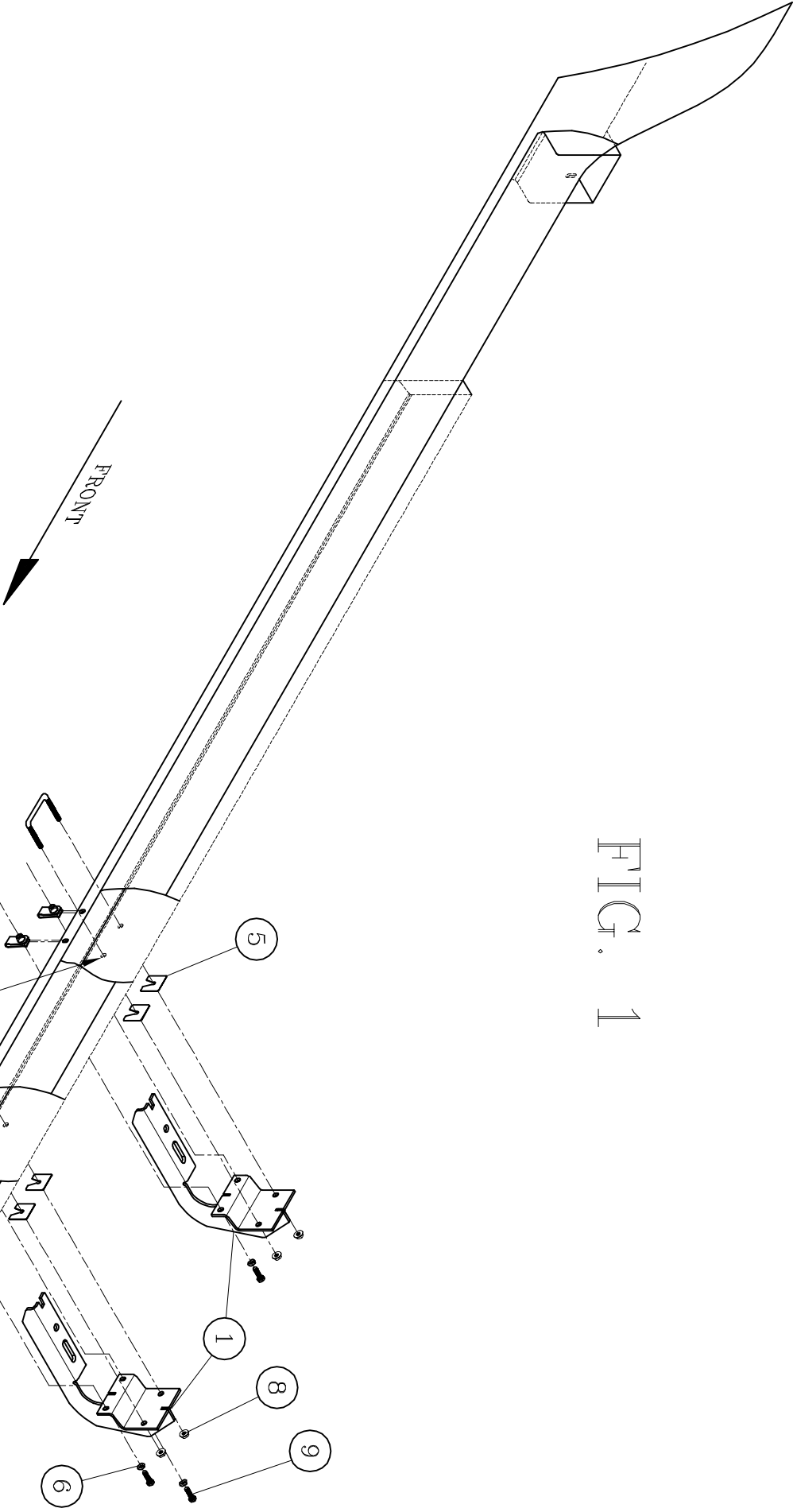
SERVICE PARTS LIST

ITEM	PART NO.	QTY	DESCRIPTION
1	553204	3	FRONT MOUNTING BRACKET
2	553211	1	AC MOUNTING BRACKET
3	553212	1	AC TOP MOUNTING BRACKET
4	101795	3	U-BOLT 3.00
5	101572	6	BOLT RETAINER
6	100030	10	5/16 LOCK WASHER
7	100034	8	5/16 WASHER
8	105859	10	M8 FLANGE NUT
9	102549	10	M8 HEX BOLT
10	101566	8	M8 CLIP NUT
11	109177	2	5/16 THREAD CUTTING BOLT

SERVICE PARTS LIST

BRACKET NO. - 571720

FIG. 1

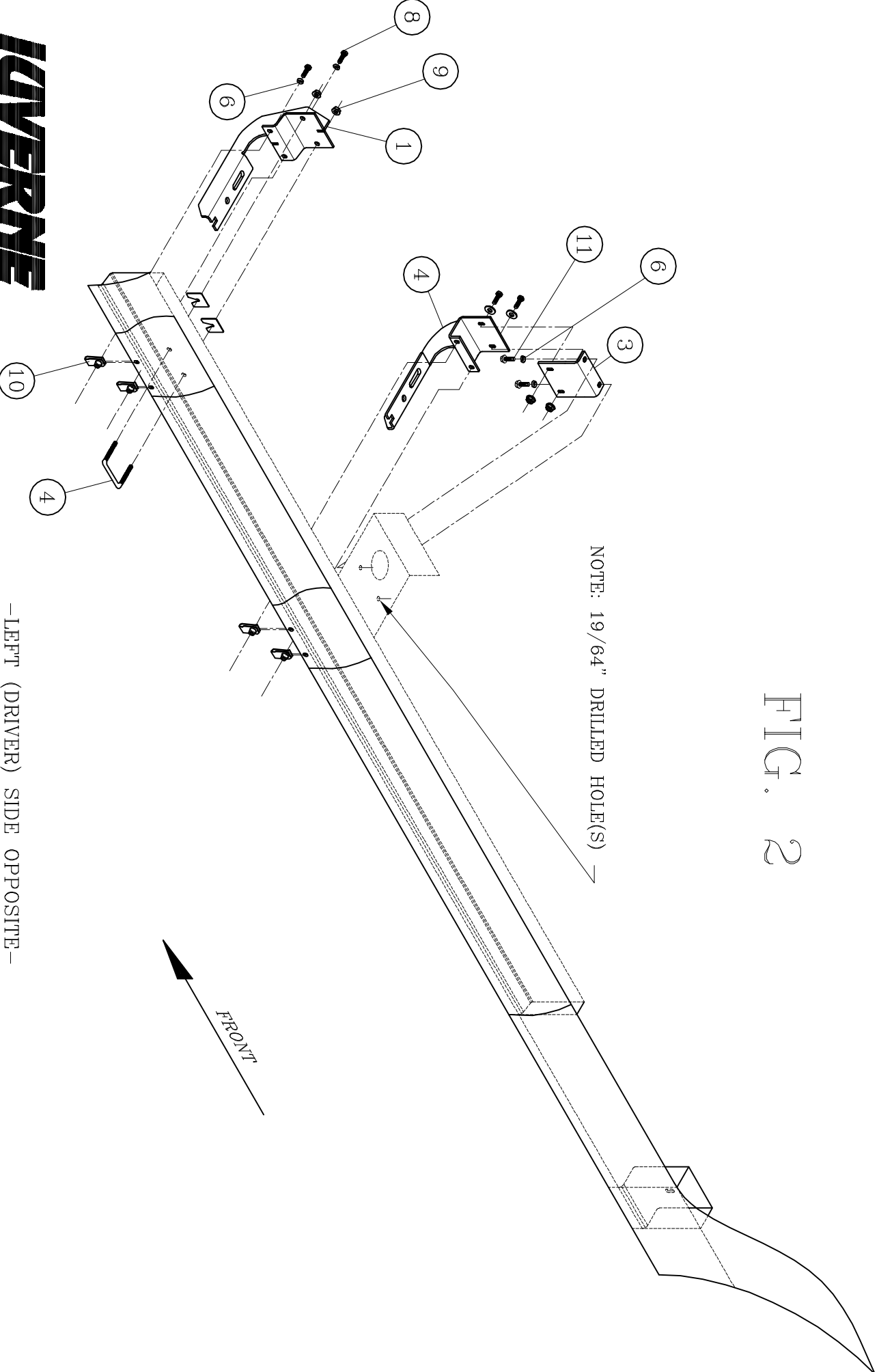


-RIGHT (PASSENGER) SIDE SHOWN-

SERVICE PARTS LIST

BRACKET NO. - 571720

FIG. 2



NOTE: 19/64" DRILLED HOLE(S)

FRONT

-LEFT (DRIVER) SIDE OPPOSITE-



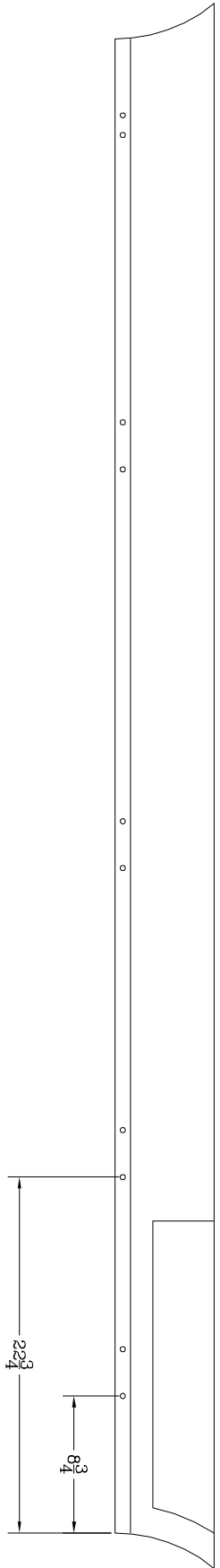
SERVICE PARTS LIST

BRACKET NO. - 571720

FIG. 3

-RIGHT (PASSENGER) SIDE SHOWN-

NOTE:
THESE DIMENSIONS MAY NEED TO BE ADJUSTED FORWARD, OR BACKWARD
TO AVOID DRILLING THROUGH SPOT WELDS IN THE PINCH SEAM.



FRONT
↓

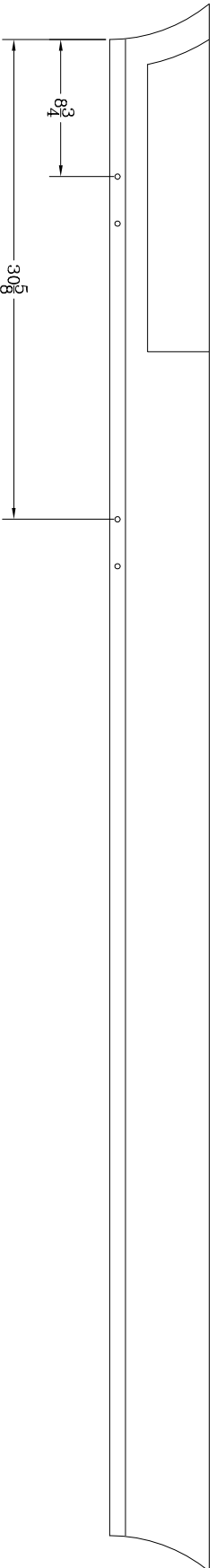


SERVICE PARTS LIST

BRACKET NO. - 571720

FIG. 4
-LEFT (DRIVERS) SIDE SHOWN-

NOTE:
THESE DIMENSIONS MAY NEED TO BE ADJUSTED FORWARD, OR BACKWARD
TO AVOID DRILLING THROUGH SPOT WELDS IN THE PINCH SEAM.



FRONT
↑

