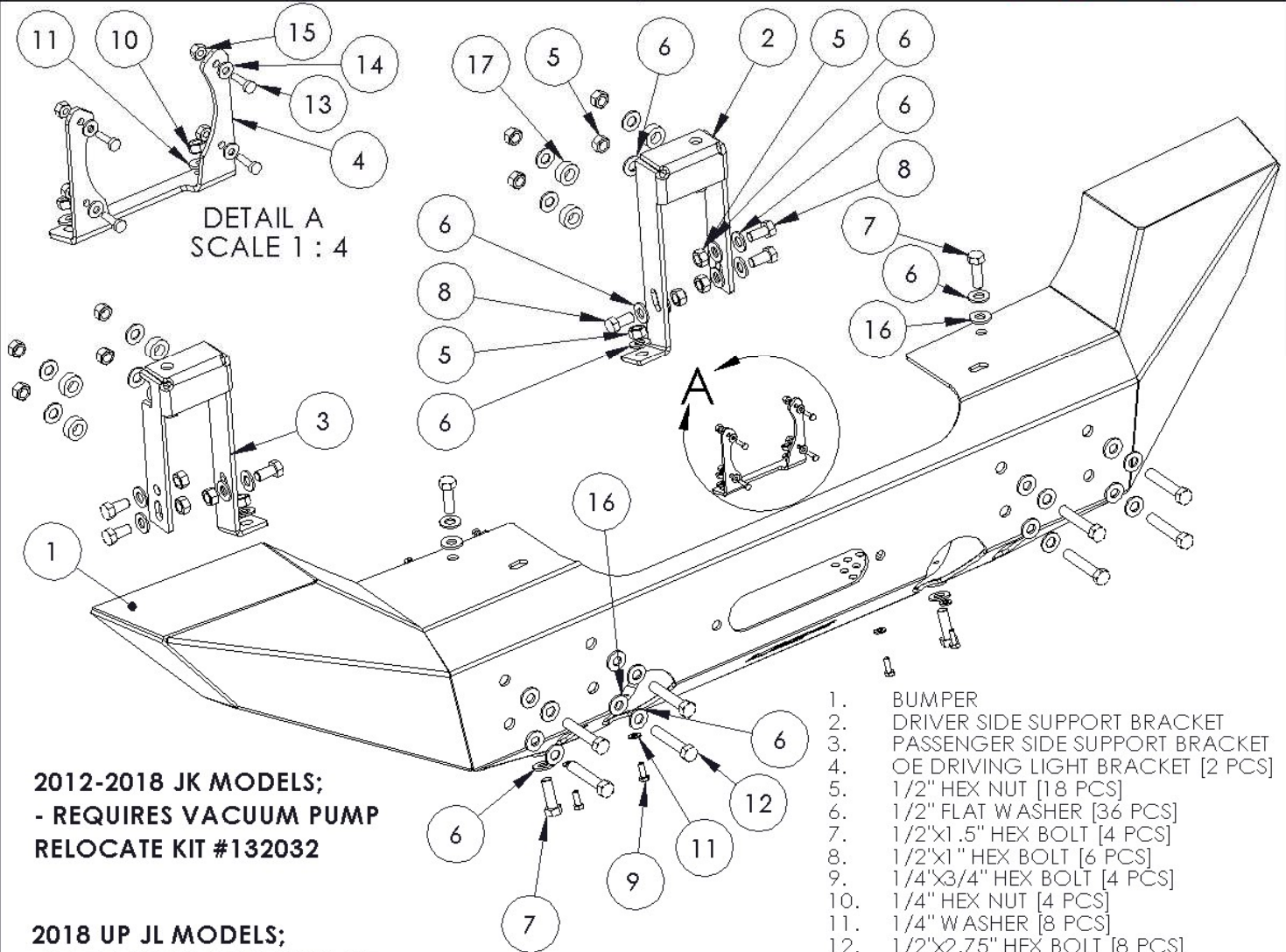


183834

2007 UP JEEP JK/JL - FRONT WINCH  
BUMPER KIT - FULL WIDTH

**OFF CAMBER  
FABRICATIONS**

by: **MBRP** INC.



DETAIL A  
SCALE 1 : 4

- 1. BUMPER
- 2. DRIVER SIDE SUPPORT BRACKET
- 3. PASSENGER SIDE SUPPORT BRACKET
- 4. OE DRIVING LIGHT BRACKET [2 PCS]
- 5. 1/2" HEX NUT [18 PCS]
- 6. 1/2" FLAT WASHER [36 PCS]
- 7. 1/2"x1.5" HEX BOLT [4 PCS]
- 8. 1/2"x1" HEX BOLT [6 PCS]
- 9. 1/4"x3/4" HEX BOLT [4 PCS]
- 10. 1/4" HEX NUT [4 PCS]
- 11. 1/4" WASHER [8 PCS]
- 12. 1/2"x2.75" HEX BOLT [8 PCS]
- 13. #8x5/8" MACHINE SCREW [8 PCS]
- 14. #8 WASHER [8 PCS]
- 15. #8 NYLOC NUT [8 PCS]
- 16. BOLT GASKET [12 PCS]
- 17. JL BUMPER SPACER [8 PCS]

2012-2018 JK MODELS;  
- REQUIRES VACUUM PUMP  
RELOCATE KIT #132032

2018 UP JL MODELS;  
- NOT COMPATIBLE WITH OE  
DRIVING LIGHTS.

### PLEASE READ BEFORE STARTING INSTALLATION

While MBRP Inc. has made every effort to ensure that all components of this kit are of superior quality and properly packaged, it is the installer's responsibility to ensure the following before starting:

- that ALL components shown above are present.
- that ALL mating components fit together.
- that there are no damaged components.
- that the kit you have purchased is appropriate for your year and model of vehicle.
- that the kit will not interfere with any modifications previously installed or planned.
- that you have read and understand these instructions.

If you have any questions or are uncertain about any aspect of the installation of this kit on your vehicle please contact your dealer before commencing installation.

## Removing the JL OEM Bumper



**Figure 1**



**Figure 2**



**Figure 3**



**Figure 4**



**Figure 5**



**Figure 6**

1. Remove the OE Skid plate.

**Refer to Figure 1.**

2. Remove the OE bumper by first unplugging the driving light wiring harness located on the passenger side frame rail. Then remove the eight nuts located on the frame horns. Once the eight nuts are removed, the bumper assembly will slide off.

**Refer to Figure 2.**

3. Remove the plastic filler panel located between the bumper and grill by first removing the two push rivets securing it to the frame rails.

4. Remove 2 bolts from each of the lower skid plate brackets and remove from the vehicle.

**Refer to Figure 3.**

5. Remove the remaining bolt from each of the bumper support brackets located on the outside of the frame rail and remove from the vehicle.

**Refer to Figure 4.**

6. The lower skid plate mounts on the driver side and passenger side frame horns must be trimmed to provide clearance for the **Bumper**. Measure 1" below the sway bar mount and mark a cut line. Use a sawsall or similar tool to cut the mounts. Use a grinder to smooth the cut edges and seal with paint.

**Refer to Figures 5 and 6.**

## Removing the JK OEM Bumper



**Figure 7**



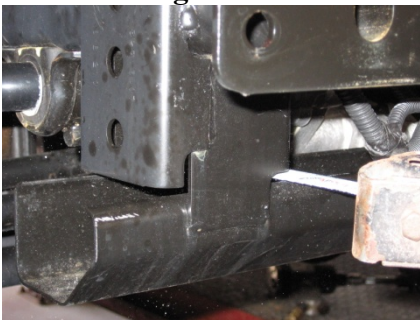
**Figure 8**



**Figure 9**



**Figure 10**



**Figure 11**

1. Remove the splash guard by removing the push rivets. **Refer to Figure 7.**
2. Remove the bumper by first unplugging the driving lights and then unclipping the wiring harness from the bumper crash bar. Then remove the eight nuts located on the frame horns. Once the eight nuts are removed, remove and retain the four backer plates. The bumper assembly will slide off. Remove the OE driving lights from the OE bumper. **Refer to Figure 8.**
3. Remove the plastic filler panel located between the bumper and grill by first removing the two push rivets securing it to the frame rails. **Refer to Figure 9.**
4. The crossbrace connecting the LH and RH frame horns needs to be removed to provide clearance for the **Bumper**. Separate the crossmember using a sawsall or similar tool to cut the tabs as shown at each frame horn. Use a grinder to smooth the cut edges and seal with paint. **Refer to Figures 10 and 11.**

## Installation on JL Models

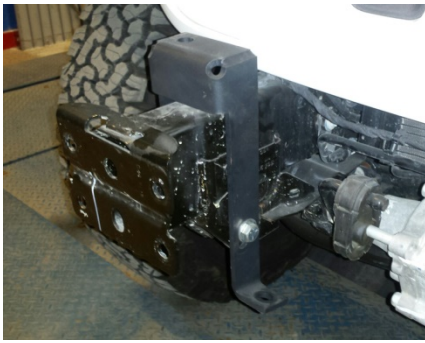


Figure 12



Figure 13

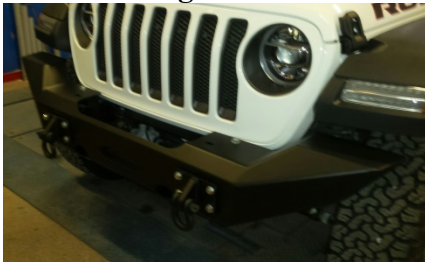


Figure 14



Figure 15



Figure 16

**THIS BUMPER KIT DOES NOT WORK WITH OE JEEP JL DRIVING LIGHTS.**

Please follow the winch manufacturer's instructions for installation of the winch you've purchased. **Maximum rated capacity is 9500lbs.**

1. Install the **Driver Side Support Bracket** and **Passenger Side Support Bracket** with the supplied  $\frac{1}{2}$ "x1" **Hex Bolts**,  $\frac{1}{2}$ " **Washers**, and  $\frac{1}{2}$ " **Hex Nuts**. The brackets must be installed exactly as shown with the lower tab facing the center of the vehicle and the closed vertical face on the top of the bracket facing forward. Leave all fasteners loose.

**Refer to Figures 12 and 13.**

2. Install the **Bumper** by sliding the assembly onto the frame horns and over the **Driver Side Support Bracket** and the **Passenger Side Support Bracket**. The assembly can be temporarily pinned in place by installing the two  $\frac{1}{2}$ "x1.5" **Hex Bolts with**  $\frac{1}{2}$ " **Washers** and **Bolt Gaskets** through the top surface of the **Bumper** into the **Driver Side Support Bracket** and **Passenger Side Support Bracket**. Some alignment of the brackets may be required.

**Refer to Figures 14 and 15.**

3. Install the remaining fasteners to secure the **Bumper** starting with the eight  $\frac{1}{2}$ "x2.75" **Hex Bolts**,  $\frac{1}{2}$ " **Washers** and **Bolt Gaskets** through the front face of the **Bumper**. Be sure to install the eight **JL Bumper Spacers** between the **Bumper** and frame. Secure on the backside by installing supplied  $\frac{1}{2}$ " **Washers**, and  $\frac{1}{2}$ " **Hex Nuts**. Leave the fasteners loose.

4. Install the two supplied  $\frac{1}{2}$ "x1.5" **Hex Bolts**,  $\frac{1}{2}$ " **Washers**, and **Bolt Gaskets** in the lower face of the **Bumper**. These bolts will pass through the lower tabs of the **Driver Side Support Bracket** and the **Passenger Side Support Bracket**. Some alignment of the brackets may be required. Secure with the supplied  $\frac{1}{2}$ " **Hex Nuts** and  $\frac{1}{2}$ " **Washers**. Leave the fasteners loose.

**Refer to Figure 16.**

5. Secure the two  $\frac{1}{2}$ "x1.5" **Hex Bolts** and  $\frac{1}{2}$ " **Washers** installed in **Step 2** using the supplied  $\frac{1}{2}$ " **Hex Nuts** and  $\frac{1}{2}$ " **Washers**. Once all mounting fasteners are in place, tighten all  $\frac{1}{2}$ " fasteners to 60 ft-lbs in the following sequence.

- 8 bolts in the front face of the Bumper.
- 2 bolts in the top face of the Bumper.
- 2 bolts in the bottom face of the Bumper
- 6 bolts connecting the Driver and Passenger Support Brackets to the Frame.

## Installation on JK Models

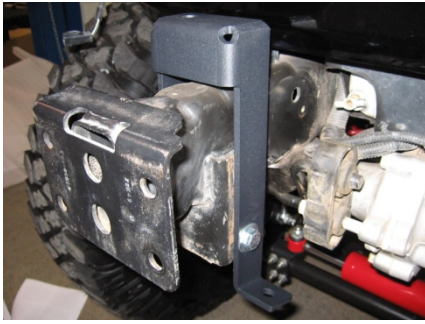


Figure 1

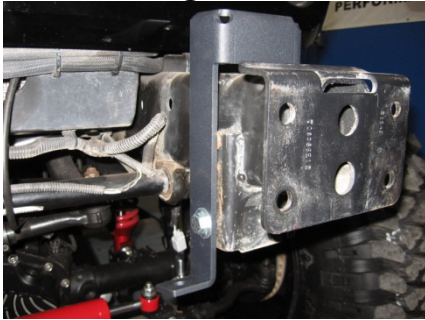


Figure 2



Figure 3



Figure 4



Figure 5

Please follow the winch manufacturer's instructions for installation of the winch you've purchased. **Maximum rated capacity is 9500lbs.**

1. Install the **Driver Side Support Bracket** and **Passenger Side Support Bracket** with the supplied  $\frac{1}{2}$ "x1" **Hex Bolts**,  $\frac{1}{2}$ " **Washers**, and  $\frac{1}{2}$ " **Hex Nuts**. The brackets must be installed exactly as shown with the lower tab facing the center of the vehicle and the closed vertical face on the top of the bracket facing forward. Leave all fasteners loose.

**Refer to Figures 1 and 2.**

**NOTE:** On '11+ Jeeps, the upper outboard mounting hole for the **Frame Brackets** is not present. Position the **Frame Brackets** on the Frame and secure with the 2 mounting holes that do line up. Drill the 3<sup>rd</sup> hole with a  $\frac{1}{2}$ " drill bit and secure using the supplied hardware.

2. Mount both of the previously removed OE Driving Lights into the supplied **OE Driving Light Brackets** using the supplied #8x5/8" **Machine Screws**, #8 **Washers**, and #8 **Nyloc Nuts**.

**Refer to Figure 3.**

3. Install both OE Driving Lights into the **Bumper** using the supplied  $\frac{1}{4}$ "x3/4" **Hex Bolts**,  $\frac{1}{4}$ " **Washers**, and  $\frac{1}{4}$ " **Hex Nuts**.

**Refer to Figures 4 and 5.**

4. Install the **Bumper** by sliding the assembly onto the frame horns and over both the **Driver Side Support Bracket** and **Passenger Side Support Bracket**. The assembly can be temporarily pinned in place by installing the two  $\frac{1}{2}$ "x1.5" **Hex Bolts with**  $\frac{1}{2}$ " **Washers** and **Bolt Gaskets** through the top surface of the **Bumper** into the **Driver Side Support Bracket** and **Passenger Support Bracket**. Some alignment of the brackets may be required.

**Refer to Figure 6.**



Figure 6



Figure 7

**NOTE:** if you have purchased the optional **Light Bar Kit #131128**, it should be installed before Step 4.

5. Install the remaining fasteners to secure the **Bumper** starting by inserting the eight  $\frac{1}{2}$ "x2.75" **Hex Bolts**,  $\frac{1}{2}$ " **Washers** and **Bolt Gaskets** through the front face of the **Bumper**. Secure on the backside by first reinstalling the OE backing plates followed by the supplied  $\frac{1}{2}$ " **Washers**, and  $\frac{1}{2}$ " **Hex Nuts**. Leave the fasteners loose.

6. Install the two supplied  $\frac{1}{2}$ "x1.5" **Hex Bolts**,  $\frac{1}{2}$ " **Washers**, and **Bolt Gaskets** in the lower face of the **Bumper**. These bolts will pass through the lower tabs of the **Driver Side Support Bracket** and **Passenger Side Support Bracket**. Some alignment of the brackets may be required. Secure with the supplied  $\frac{1}{2}$ " **Hex Nuts** and  $\frac{1}{2}$ " **Washers**. Leave the fasteners loose.

7. Secure the two  $\frac{1}{2}$ "x1.5" **Hex Bolts** and  $\frac{1}{2}$ " **Washers** installed in **Step 4** using the supplied  $\frac{1}{2}$ " **Hex Nuts** and  $\frac{1}{2}$ " **Washers**. Once all mounting fasteners are in place, tighten all  $\frac{1}{2}$ " fasteners to 60 ft-lbs in the following sequence.

- 8 bolts in the front face of the Bumper.
- 2 bolts in the top face of the Bumper.
- 2 bolts in the bottom face of the Bumper
- 6 bolts connecting the Driver and Passenger Support Brackets to the Frame.

8. Reconnect the Driving Light wiring and secure to prevent chaffing of the harness.

Congratulations! You are finished. We are sure that you will enjoy This **Off Camber Fabrications** product by **MBRP Inc.**

