

AC-9219-12

2024-UP CAN AM MAVERICK R,
FRONT RACE BUMPER

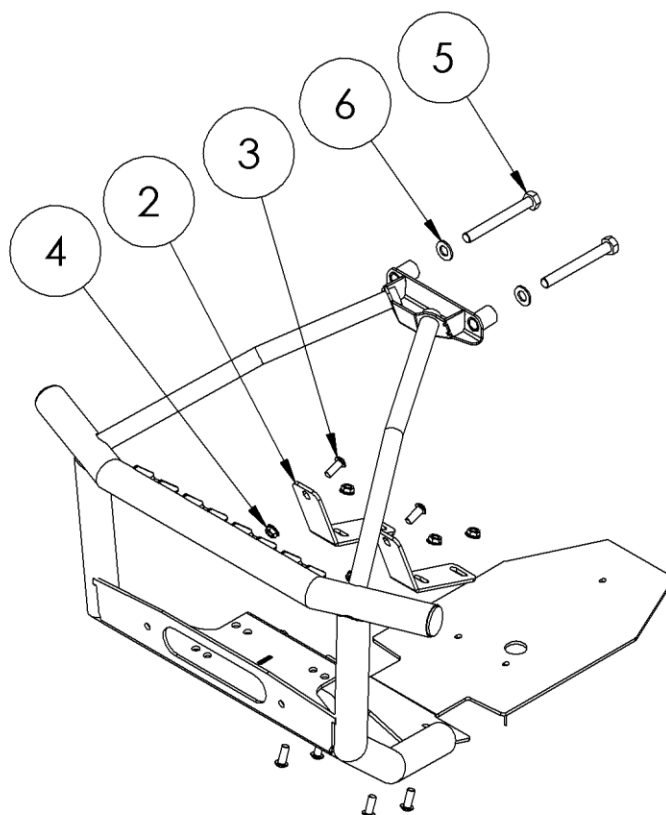
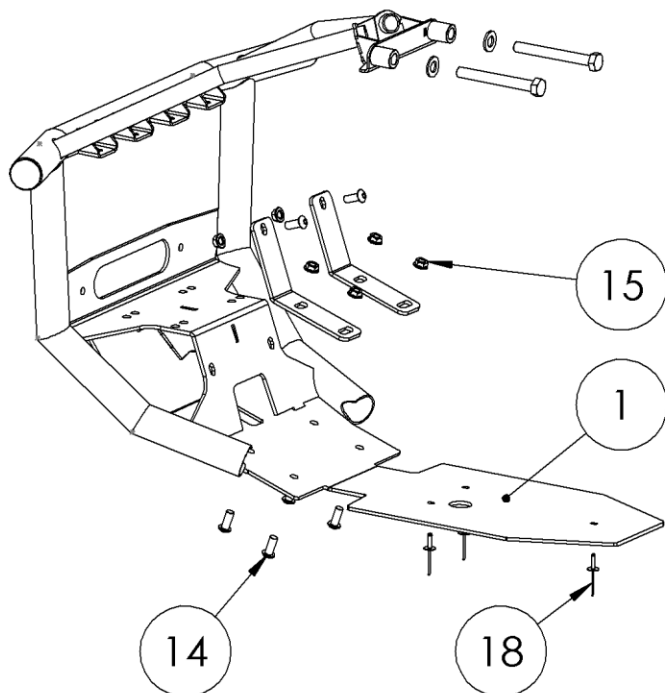
MBRP®

WINCH BOLT PATTERNS:

- 3.0"X4.87", 3/8" HARDWARE
- 3.0"X6.61"

FAIRLEAD BOLT PATTERN:

- 10" CENTERS, 3/8" HARDWARE



ITEM	DESCRIPTION	QTY
1	BUMPER ASSEMBLY	1
2	BACKING PLATE	2
3	BUTTON HEAD SCREW - M10X25	6
4	M10 FLANGE NUT	6
5	M14X120 BOLT	2
6	M14 FLAT WASHER	2
7	3/16" RIVET	3

Refer to this LOT NUMBER when contacting customer service: _____

PLEASE READ BEFORE STARTING INSTALLATION

While MBRP has made every effort to ensure that all components of this system are of superior quality and properly packaged, it is the installer's responsibility to ensure the following:

- that ALL components shown above are present.
- that ALL mating components fit together.
- that there are no damaged components.
- that the system you have purchased is appropriate for your vehicle year, model and configuration.
- that the system will not interfere with any modifications previously installed or planned.
- that you have read and understand these instructions.

If you have any questions or are uncertain about any aspect of the installation of this system to your vehicle please contact your dealer before commencing installation.

Installation



Figure 1



Figure 2



Figure 3

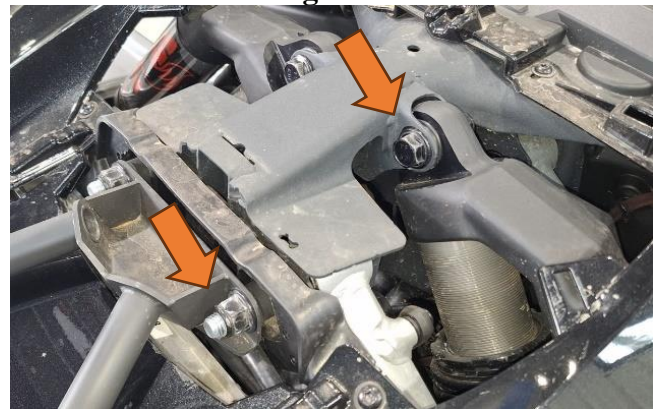


Figure 4

1. Remove 4 Torx head screws from the OE Skid plate.
Refer to Figure 1.
2. Drill out the 4 remaining rivets and remove the OE Skid plate.
Refer to Figure 2.
3. Using a 11mm or 7/16" bit, drill the 4 rivet holes on the chassis from step 2 for M10 bolt clearance.
4. Remove the upper shock mount cover by lifting the rear edge straight up to release the clips and slide it forward.
Refer to Figure 3.
5. Lift the front of the vehicle to remove weight from the front tires. Remove both upper shock bolts followed by both front upper A-Arm bolts. The shocks will need to be moved to allow removal of the A-Arm Bolts. Install the supplied **M14x120 Bolts** in both A-Arms. Do not reinstall the nuts. Reinstall both upper shock bolts.
Refer to Figure 4.

MBRP

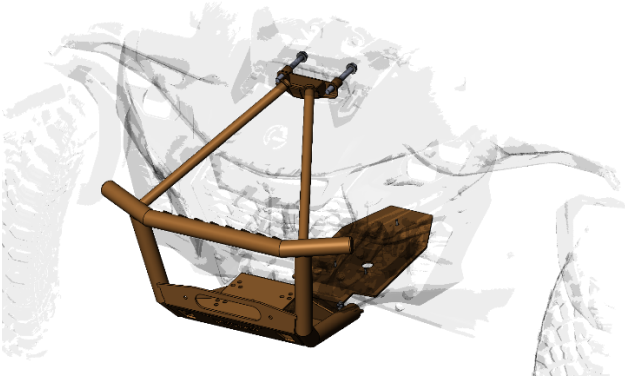


Figure 5



Figure 6

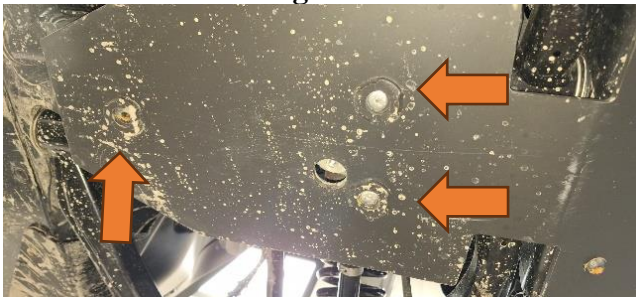


Figure 7

6. Install the **Bumper Assembly** onto the **M14x120 Bolts** and loosely reinstall the A-Arm nuts.
Refer to Figure 5.
7. Install both **Backing Plates** inside the front section of the chassis. Use the supplied **M10x25 Button Head Screws** and **M10 Flange Nuts** to bolt through the **Bumper Assembly, Chassis, and Backing Plates**.
Refer to Figure 6.
8. Tighten all hardware and reinstall the upper shock mount cover.
9. Install the **3/16" Rivets** to secure the lower skid plate to the chassis.
Refer to Figure 7.

Congratulations! You are ready to use your **MBRP** bumper kit. We know you will enjoy your purchase!