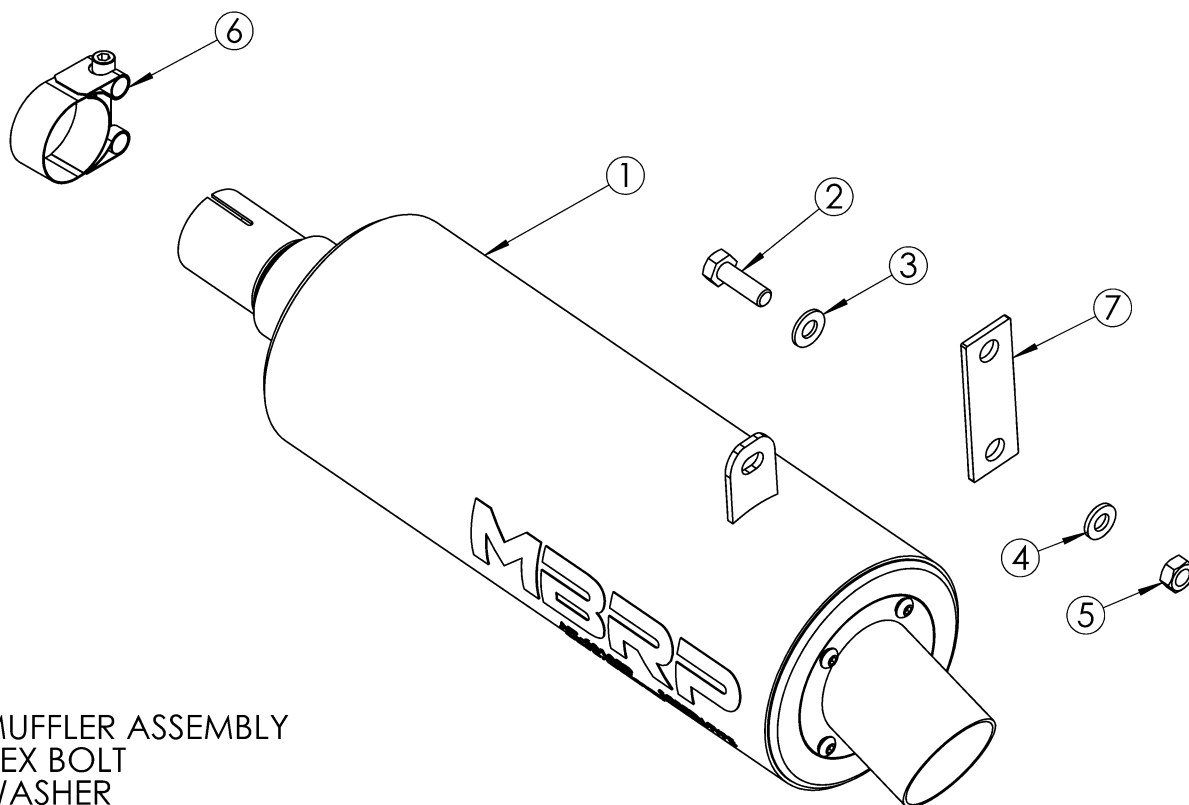


# AT-6700SP

SPORT MUFFLER - SLIP-ON  
2002 ARCTIC CAT 375/400/500  
(EXCLUDING FIS MODELS)

# MBRP



1. MUFFLER ASSEMBLY
2. HEX BOLT
3. WASHER
4. LOCK WASHER
5. HEX NUT
6. CLAMP
7. BRACKET

## PLEASE READ BEFORE STARTING INSTALLATION

While MBRP Inc. has made every effort to ensure that all components of this system are of superior quality and properly packaged, it is the installer's responsibility to ensure the following before removal of the factory exhaust:

- that ALL components shown above are present.
- that ALL mating components fit together.
- that there are no damaged components.
- that the system you have purchased is appropriate for your vehicle year, model and configuration.
- that the system will not interfere with any modifications previously installed or planned.
- that you have read and understand these instructions.

If you have any questions or are uncertain about any aspect of the installation of this system to your vehicle please contact your dealer before commencing installation.



### **Removal of Stock Exhaust**

1. Loosen the clamp on the stock exhaust.
2. Remove the bolt that is securing the stock muffler in place, then remove the muffler.

### **Installation of MBRP Exhaust**

1. Place the **Clamp** onto the inlet pipe of the **Muffler**.
2. Position the **Muffler** inlet onto the end of the exhaust pipe, aligning the brackets.
3. Attach the **Muffler** brackets using provided bolts and bracket.

**Congratulations!** You are ready to begin experiencing the improved performance and driving excitement of your **MBRP** Ltd. ATV Exhaust upgrade. We know you will enjoy your purchase.



**Figure 1**



**Figure 2**



**Figure 3**



**Figure 4**

## Spark Arrestor Maintenance

In order to maintain optimal performance, the spark arrestor screen should be cleaned every 30-35 hours of use.

### Clean-out Instructions:

Make sure the vehicle is cool before completing the clean-out procedure.

1. Using a 1/8" hex key, remove the 4 screws securing the outlet cap. (Figure 1).
2. Remove the outlet cap to expose the spark arrestor screen insert. (Figure 2)
3. Remove the screen insert. (Figure 3)
4. Using a wire brush, thoroughly brush the screen to remove residue. (Figure 4)
5. Replace the screen and cap.
6. Tighten the screws to 23 in-lbs (2.6 Nm).