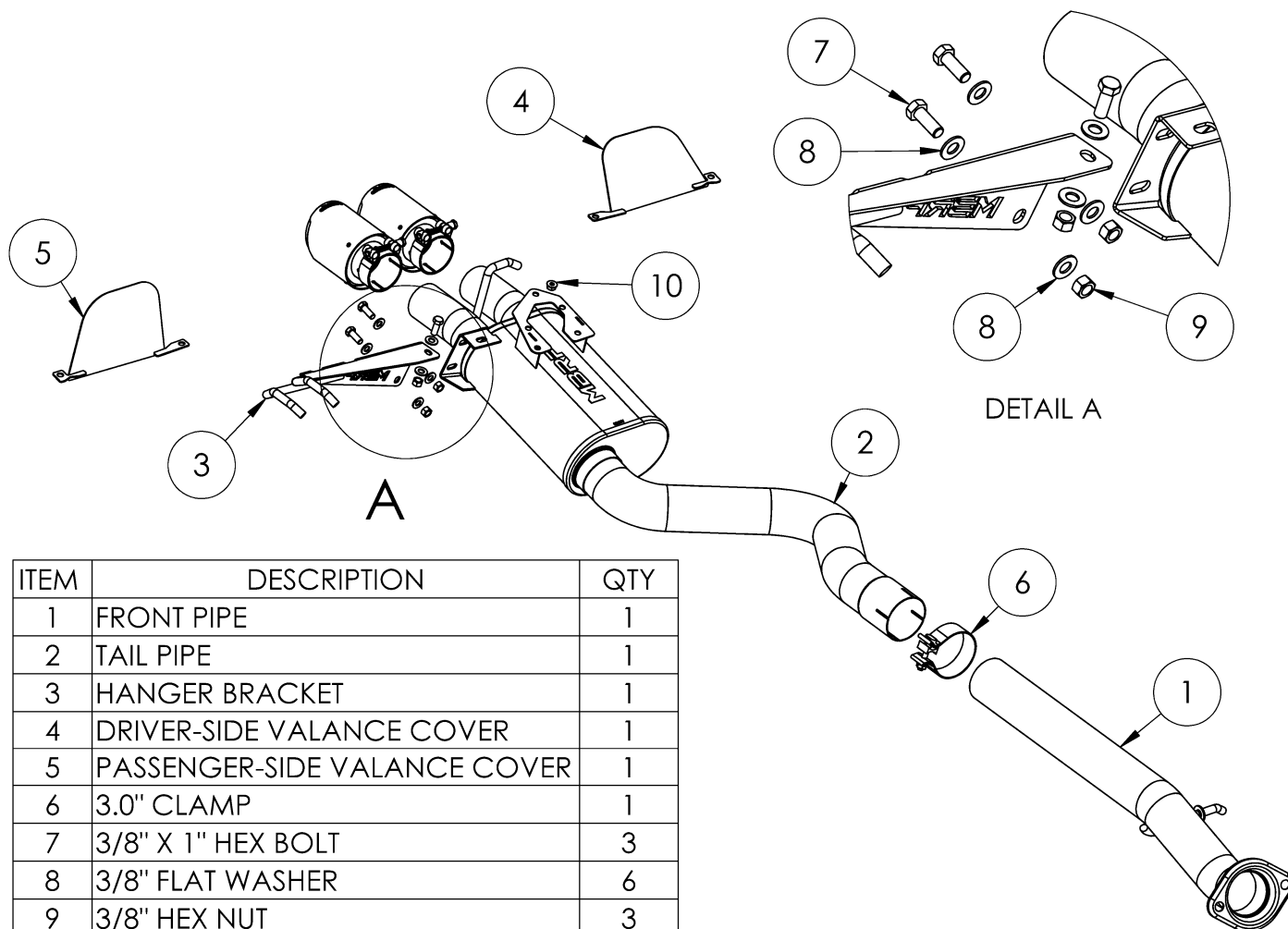


S4303

2023-UP TOYOTA COROLLA GR, 1.6L,
CAT-BACK, 3.0" DUAL REAR CENTER

MBRP®



ITEM	DESCRIPTION	QTY
1	FRONT PIPE	1
2	TAIL PIPE	1
3	HANGER BRACKET	1
4	DRIVER-SIDE VALANCE COVER	1
5	PASSENGER-SIDE VALANCE COVER	1
6	3.0" CLAMP	1
7	3/8" X 1" HEX BOLT	3
8	3/8" FLAT WASHER	6
9	3/8" HEX NUT	3
10	M8x1.25 FLANGE NUT	1
11	TIP	2

Refer to this **LOT NUMBER** when contacting customer service: _____

PLEASE READ BEFORE STARTING INSTALLATION

While MBRP has made every effort to ensure that all components of this system are of superior quality and properly packaged, it is the installer's responsibility to ensure the following before removal of the factory exhaust:

- that ALL components shown above are present.
- that ALL mating components fit together.
- that there are no damaged components.
- that the system you have purchased is appropriate for your vehicle year, model and configuration.
- that the system will not interfere with any modifications previously installed or planned.
- that you have read and understand these instructions.

If you have any questions or are uncertain about any aspect of the installation of this system to your vehicle please contact your dealer before commencing installation.



Figure 1



Figure 2



Figure 3



Figure 4



Figure 5

Removal of Stock System

1. Apply penetrating lubricant liberally to all exhaust fasteners, hangers, and rubber insulators.
2. Disconnect the exhaust valve electrical connection.
Refer to Figure 1.
3. Disconnect the factory flange connection located behind the cross brace. Retain factory hardware for re-assembly.
Refer to Figure 2.
4. Remove the factory exhaust from the vehicle.

Installation of **MBRP** Performance Exhaust

1. Install the **Front Pipe** by first inserting the hanger into the rubber isolator and then securing the flange with the factory hardware.
Refer to Figure 3.
2. Remove the valve actuator from the factory exhaust and install onto the **Tail Pipe** using the factory hardware and the supplied **M6 Flange Nut**.
Refer to Figure 4.
3. Install the **Hanger Bracket** onto the **Tail Pipe** with the supplied **3/8" Hardware**. Do not fully tighten.
Refer to Figure 5.
4. Install the rubber isolators and **3.0" Clamp** onto the **Tail Pipe**.

MBRP



Figure 6



Figure 7

5. Install the **Tail Pipe** onto the **Front Pipe**, hanging the center hanger first. Refer to Figure 6.

6. Remove the push clips located on each side of the valance openings, then use them to install the **Valance Covers**. Refer to Figure 7.

7. Install the **Tips**.

8. Carefully align the system and tips. Align the edge of each band clamp with the edge of the joint it is connecting. Tighten all hardware and clamps, starting at the front and working rearward to secure the system. Check along the full length of the exhaust system to ensure there is adequate clearance for fuel lines, vent lines, brake lines, frame, bodywork, suspension and any wiring, etc. If there is any interference detected, relocate or adjust to provide adequate clearance. Ensure all clamp connections are secure and components are unable to rotate or slide. Band clamps require approximately 45 lb-ft (60 N-m) of torque. 3/8" hardware requires 30lb-ft (40N-m) of torque. Verify clearances, system security and band clamp torque after 30-60 miles (50-100 km) of driving.



Congratulations! You are ready to begin experiencing the improved power, sound and driving experience of your **MBRP** Performance Exhaust. We know you will enjoy your purchase!