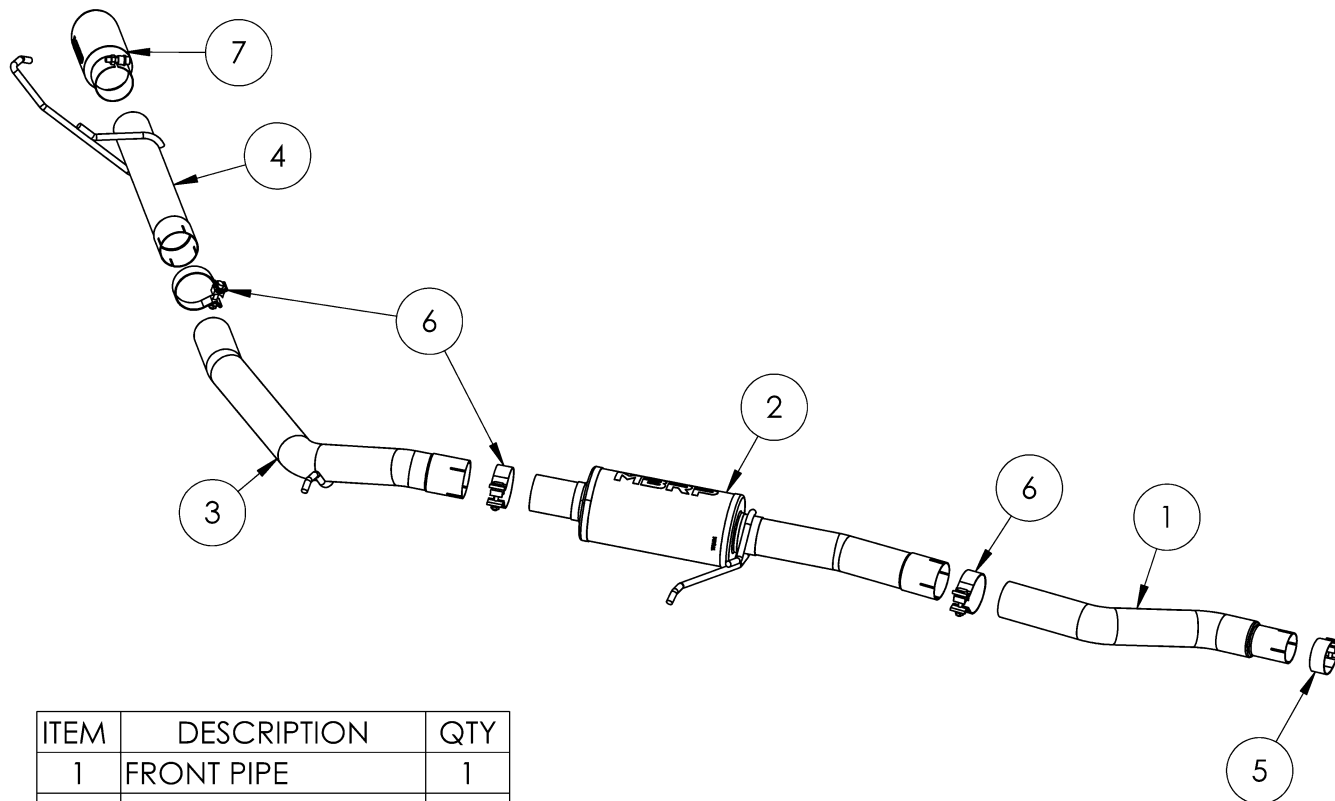


# S5267

2022-UP FORD MAVERICK, 2.0L ECOBOOST,  
EXCL. FWD MODELS, TREMOR, CAT-BACK,  
3.0" SINGLE SIDE EXIT

# MBRP®



ITEM	DESCRIPTION	QTY
1	FRONT PIPE	1
2	MUFFLER	1
3	UNDER-AXLE PIPE	1
4	TAIL PIPE	1
5	2.38" CLAMP	1
6	3.0" CLAMP	3
7	EXHAUST TIP	1

## PLEASE READ BEFORE STARTING INSTALLATION

While MBRP has made every effort to ensure that all components of this system are of superior quality and properly packaged, it is the installer's responsibility to ensure the following before removal of the factory exhaust:

- that ALL components shown above are present.
- that ALL mating components fit together.
- that there are no damaged components.
- that the system you have purchased is appropriate for your vehicle year, model and configuration.
- that the system will not interfere with any modifications previously installed or planned.
- that you have read and understand these instructions.

If you have any questions or are uncertain about any aspect of the installation of this system to your vehicle please contact your dealer before commencing installation.

# MBRP

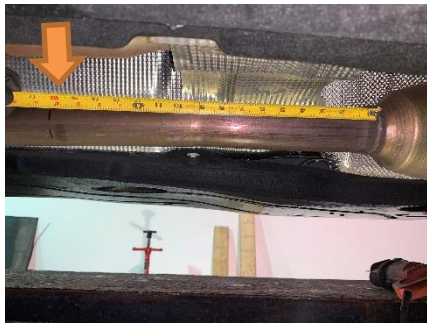


Figure 1



Figure 2



Figure 3



Figure 4



Figure 5

## Removal of Stock System

1. Apply penetrating lubricant liberally to all exhaust fasteners, hangers, and rubber insulators.
2. Mark and cut the pipe 16.25" from the catalytic converter.  
**Refer to Figure 1.**

3. Remove the factory exhaust from the rubber insulators starting from the front and working rearward.  
**Refer to Figure 2.**

## Installation of **MBRP** Performance Exhaust

1. Slide the **2.38" Clamp** onto the **Front Pipe** and install onto the remaining factory pipe. Do not tighten any clamps until the last step.  
**Refer to Figure 3.**

2. Install the **Muffler** onto the **Front Pipe** with a **3.0" Clamp** and insert the hanger into the insulator. Support the system as you move along.  
**Refer to Figure 4.**

3. Install the **Under-Axle Pipe** with a **3.0" Clamp** onto the **Muffler**.  
**Refer to Figure 5.**

4. Slide the **Tail Pipe** onto the **Under-Axle Pipe** with a **3.0" Clamp**, and insert the hanger into the rear insulator.  
**Refer to Figure 6.**

5. Install the **Exhaust Tip** onto the **Tail Pipe**.  
**Refer to Figures 6.**

# MBRP



**Figure 6**

6. Prior to tightening it should be noted that each hanger is level where it passes through the rubber insulators. The **Front Pipe** should be about 1" from the drive shaft.

7. Carefully align the system and tip. Align the edge of each band clamp with the edge of the joint it is connecting. Tighten all hardware and clamps, starting at the front and working rearward to secure the system. Check along the full length of the exhaust system to ensure there is adequate clearance for fuel lines, vent lines, brake lines, frame, bodywork, suspension and any wiring, etc. If there is any interference detected, relocate or adjust to provide adequate clearance. Ensure all clamp connections are secure and components are unable to rotate or slide. Band clamps require approximately 45 lb-ft (60 N-m) of torque. Verify clearances, system security and band clamp torque after 30-60 miles (50-100 km) of driving.



**Congratulations!** You are ready to begin experiencing the improved power, sound and driving experience of your **MBRP** Performance Exhaust. We know you will enjoy your purchase!