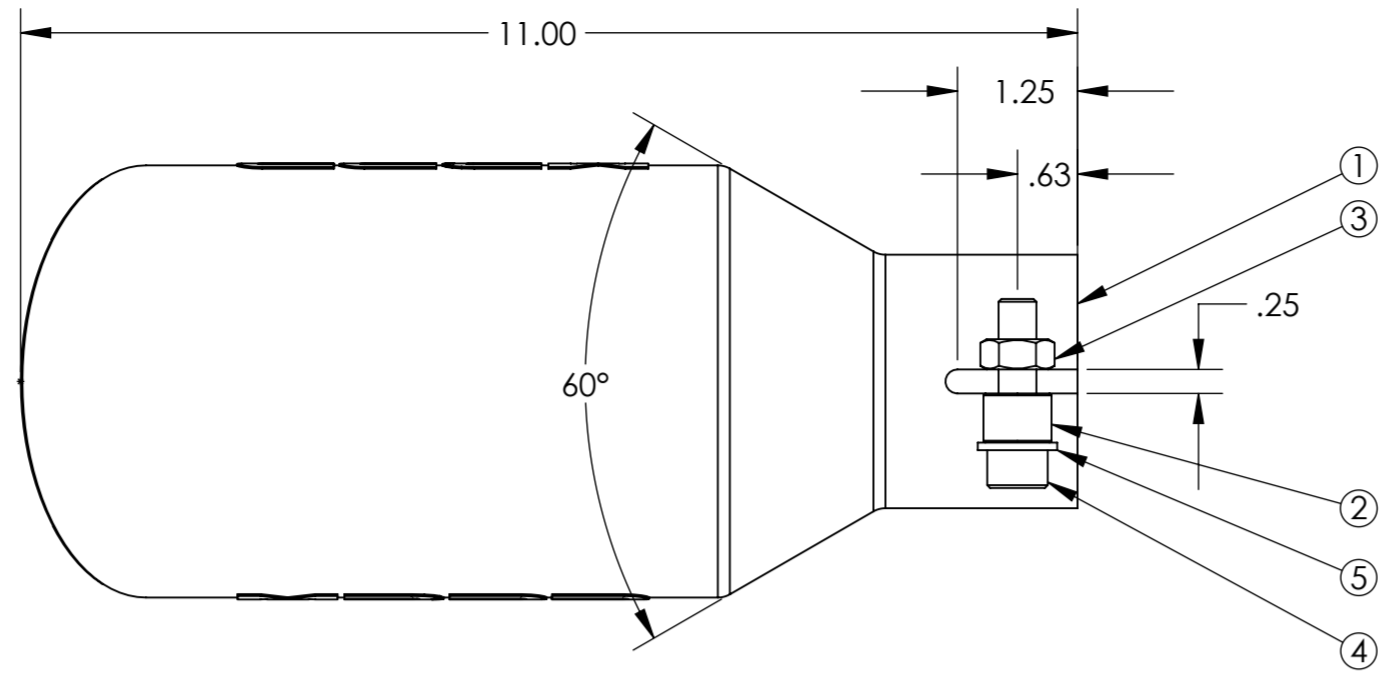
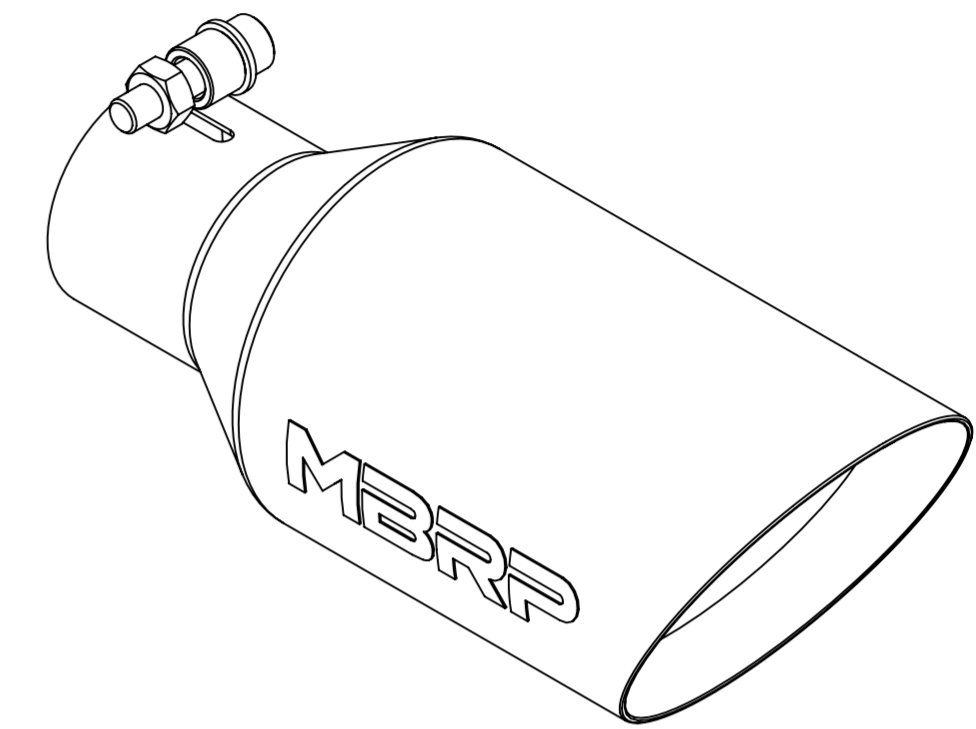
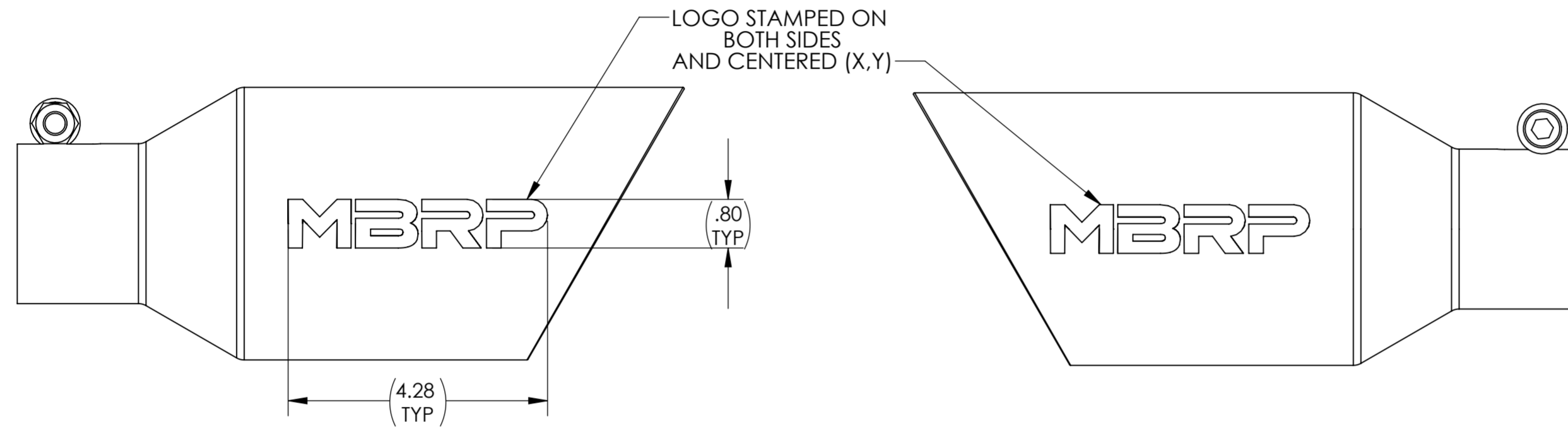


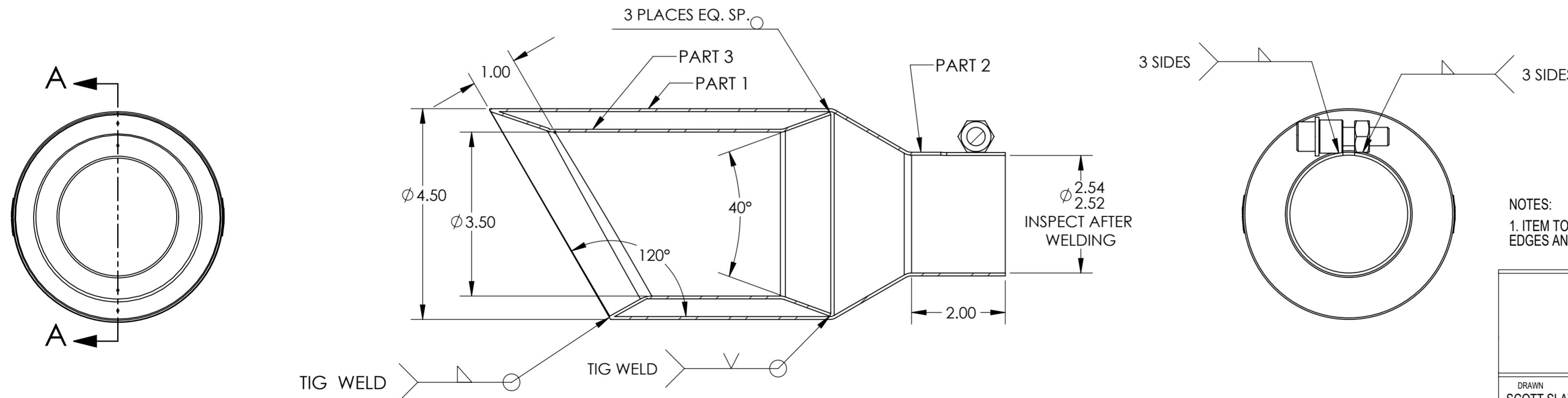
PART NO. T5161



ISSUE	AREA	MODIFICATION	DATE	SIG.	APP.
A		ORIGINAL ISSUE	12/05/2016	SS	
B		INLET TOLERANCE REVISED	10/07/16	SS	
C		UPDATED TO 2019 LOGO	20-MAY-20	RV	
D		LOGO SIZE ADJUSTED FROM .98" TO .80" HEIGHT	28-MAY-20	RV	



ISOMETRIC VIEW FOR REFERENCE ONLY



NOTES:  
1. ITEM TO BE FREE OF SHARP EDGES AND BURRS



DRAWN SCOTT SLATER	DATE 18-Nov-14	CHECKED	
MODIFICATIONS BY SOLIDWORKS ONLY		SCALE 1:1	
FINISH POLISHED			
MATERIAL T304 16ga STAINLESS STEEL			SIZE A2
DESCRIPTION TIP, 2.5" INLET, 4.5" OUTLET, DUAL WALL			REV. D

ITEM NO.	DESCRIPTION	QTY.
1	EXHAUST TIP 2.5 to 4.5" X 11"L	1
2	COLLAR 18mmOD x12mmID x13mm	1
3	M10x1.5 HEX NUT	1
4	M10x40 SHCS BOLT	1
5	WASHER	1

PART NUMBER	MATERIAL
T5161	304 STAINLESS
T5161BLK	409 STAINLESS
T5161409	409 STAINLESS

ALL DIMENSIONS IN INCHES UNLESS SPECIFIED OTHERWISE  
DO NOT SCALE

ALL DIMENSIONS APPLY TO THE FINISHED COMPONENT INCLUDING METAL SURFACE TREATMENT.

ALL RIGHTS RESERVED ALSO IN RESPECT TO GRANT OF PATENTS AND REGISTRATION OF DESIGNS. THE PRESENT DRAWING MAY BE NEITHER COPIED OR DISCLOSED TO A THIRD PERSON WITHOUT WRITTEN PERMISSION. NOR MISUSED IN ANY OTHER WAY BY THE RECEIVER OR A THIRD PERSON. CONTRAVENTION WILL ENTITLE TO INDEMNIFICATION AND MAY ENTAIL SANCTIONS.

GENERAL TOLERANCES:  
NO DECIMAL: +/- .100  
ONE DECIMAL: +/- .060  
TWO DECIMAL: +/- .020  
THREE DECIMAL: +/- .005

ANGLES: +/- 1.0°

COMPONENT IDENTIFICATION FEATURE

PROJECT NO.

