



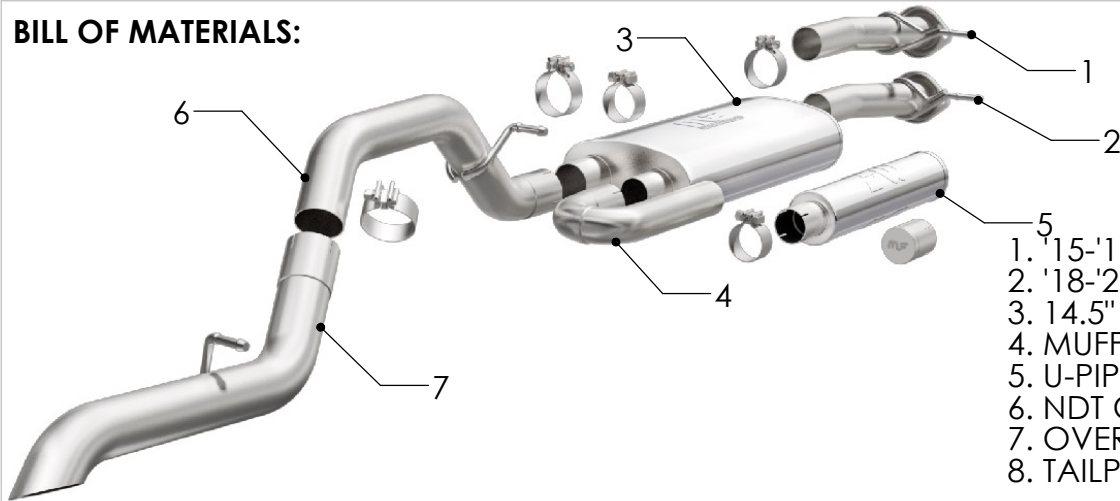
# INSTALLATION INSTRUCTIONS



OVERLAND CAT-BACK

PART NO. 19569

## BILL OF MATERIALS:



1. '15-'17 INLET PIPE ASSY.
2. '18-'21 INLET PIPE ASSY.
3. 14.5" EXTENSION PIPE.
4. MUFFLER ASSY.
5. U-PIPE ASSY.
6. NDT CHAMBER.
7. OVER AXLE PIPE ASSY.
8. TAILPIPE ASSY.



WEAR SAFETY GLASSES



READ INSTRUCTIONS THOROUGHLY BEFORE INSTALLING PRODUCT



SPRAY LUBRICANT

To ease removal of existing exhaust components (especially on older vehicles) spray penetrating lubricant on all fasteners and hangers/insulators that will be loosened or removed and let soak before disassembly.

## HARDWARE KIT:

1. [2] 2.50" Torca Clamp
2. [4] 3.00" Torca Clamp
3. [1] MF Block Off Pipe.

## MINIMUM REQUIRED TOOLS:



13mm



Hanger Tool (Or Pry Bar)

## MAGNAFLOW RECOMMENDS PROFESSIONAL INSTALLATION ON ALL THEIR PRODUCTS

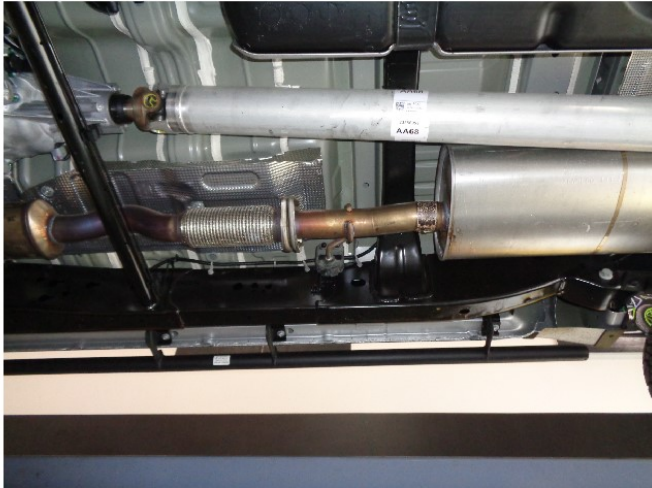


**WARNING:** When working on, under, or around any vehicle exercise caution. Please allow the vehicle's exhaust system to cool before removal, as exhaust system temperatures may cause severe burns. If working without a lift always consult vehicle manual for correct lifting specifications. Always wear safety glasses and ensure a safe work area. Serious injury or death could occur if safety measures are not followed.

**ATTENTION:** Always install any supplied band or U-bolt clamps to the proper torque specifications of 40-45 ft-lb for band clamps and 30-35 ft-lb for U-bolt clamps. Over tightening will result in the clamps breaking and will NOT be warranted by MagnaFlow.

MAGNAFLOW: 1901 Corporate Centre Dr - Oceanside, CA 92056 | 1(800)990-0905  
Technical Support: 1(800) 959-9226 | Email: moreinfo@magnaflow.com

# INSTALLATION INSTRUCTIONS



**Step 1:** To remove the OEM exhaust system, unfasten hardware at the muffler flange (Retain both flange fasteners to be re-used).

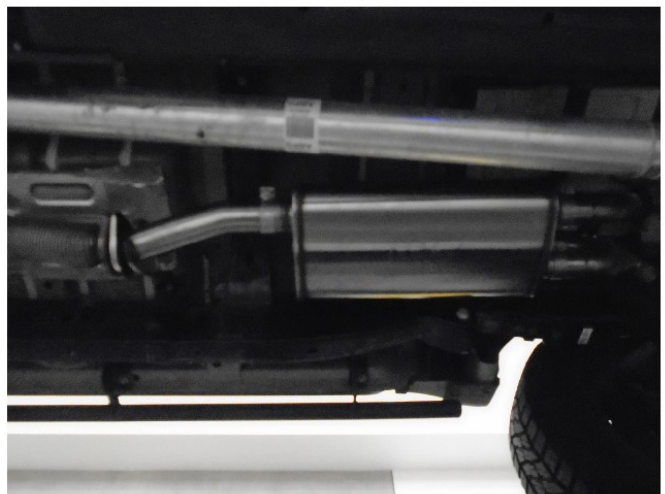


**Step 2:** Working front to rear, disengage all welded hangers from the rubber insulators and remove the system. (Retain the rubber insulators as they will be needed to mount the new MAGNAFLOW system.)




**Step 3:** If your vehicle has a crew cab with a Standard Bed configuration you will need to include the supplied 14.50" Extension Pipe between the Inlet Pipe Assembly and the Muffler.



**Step 4:** Begin Installing the new system by attaching the inlet pipe to the Catalytic Converter outlet using the OE hardware. **NOTE: 15-17 vehicle will use the longer inlet and 18-21 will use the shorter inlet.**



**Step 5:** Next attach the Oval Muffler to the Inlet Pipe with the supplied 2.50" clamp. This exhaust system is configured to allow the user to tune the sound. For a more moderate exhaust sound install the U-pipe Assy and the 4.00" NDT Chamber (as shown) using the supplied 2.50" clamps. For a more aggressive sound see configuration chart below.

	<b>MODERATE TONE:</b> U-PIPE WITH NDT CHAMBER
	<b>AGGRESSIVE TONE:</b> U-PIPE WITH PIPE CAP
	<b>MOST AGGRESSIVE TONE:</b> ONLY PIPE CAP

**MAGNAFLOW:** 1901 Corporate Centre Dr - Oceanside, CA 92056 | 1(800)990-0905  
**Technical Support:** 1(800) 959-9226 | Email: [moreinfo@magnaflow.com](mailto:moreinfo@magnaflow.com)

## INSTALLATION INSTRUCTIONS



**Step 6:** When using the NDT chamber, mount it above the muffler as shown. Be sure to leave at least 1/2" of clearance between both components.



**Step 7:** Install the Over Axle Pipe to the Muffler outlet using the supplied clamp. Engage both hangers to the OE rubber insulators.



**Step 8:** Install the Tail Pipe to the Over Axle Pipe outlet using the supplied clamp. Engage the hanger to the OE rubber insulator.



**Step 9:** Once a final position has been chosen for the new exhaust system, evenly tighten all clamps from front to rear using the torque specifications on page one of the instructions. Inspect all fasteners after 25-50 miles of operation and re-tighten if necessary.