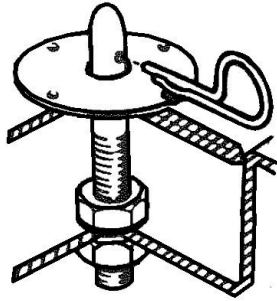




HOOD & DECK PINNING KIT P/N 1617

1. Determine stud location on hood or deck and drill hole.
2. Place stud in hole to proper height of hood so stud is level with hood in which chrome pin goes through.
3. Lower hood to find location, then drill hole for stud.
4. Adjust stud height so hole will allow washer and chrome pin to be installed.
5. Depending on style, locate and install chrome washer by either removing the backing paper for the self-adhesive type, or drill four 3/32" holes, then screw chrome plate to hood. Install chrome hood pin. It may be necessary to readjust stud height.
6. Replacement scuff plates, lanyard cables, and safety clips are available at www.holley.com.

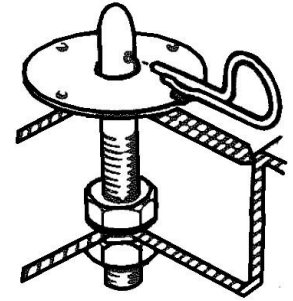


199R11568



HOOD & DECK PINNING KIT P/N 1617

1. Determine stud location on hood or deck and drill hole.
2. Place stud in hole to proper height of hood so stud is level with hood in which chrome pin goes through.
3. Lower hood to find location, then drill hole for stud.
4. Adjust stud height so hole will allow washer and chrome pin to be installed.
5. Depending on style, locate and install chrome washer by either removing the backing paper for the self-adhesive type, or drill four 3/32" holes, then screw chrome plate to hood. Install chrome hood pin. It may be necessary to readjust stud height.
6. Replacement scuff plates, lanyard cables, and safety clips are available at www.holley.com.

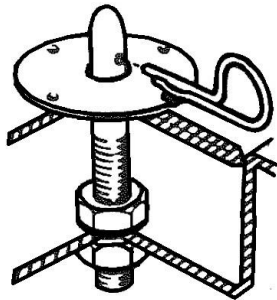


199R11568



HOOD & DECK PINNING KIT P/N 1617

1. Determine stud location on hood or deck and drill hole.
2. Place stud in hole to proper height of hood so stud is level with hood in which chrome pin goes through.
3. Lower hood to find location, then drill hole for stud.
4. Adjust stud height so hole will allow washer and chrome pin to be installed.
5. Depending on style, locate and install chrome washer by either removing the backing paper for the self-adhesive type, or drill four 3/32" holes, then screw chrome plate to hood. Install chrome hood pin. It may be necessary to readjust stud height.
6. Replacement scuff plates, lanyard cables, and safety clips are available at www.holley.com.

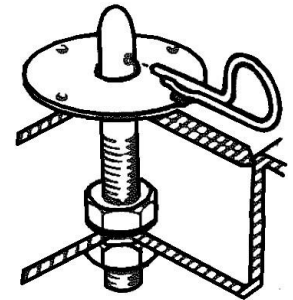


199R11568



HOOD & DECK PINNING KIT P/N 1617

1. Determine stud location on hood or deck and drill hole.
2. Place stud in hole to proper height of hood so stud is level with hood in which chrome pin goes through.
3. Lower hood to find location, then drill hole for stud.
4. Adjust stud height so hole will allow washer and chrome pin to be installed.
5. Depending on style, locate and install chrome washer by either removing the backing paper for the self-adhesive type, or drill four 3/32" holes, then screw chrome plate to hood. Install chrome hood pin. It may be necessary to readjust stud height.
6. Replacement scuff plates, lanyard cables, and safety clips are available at www.holley.com.

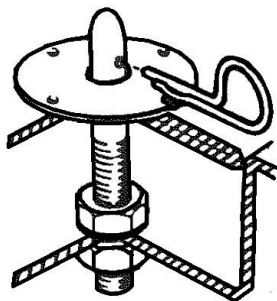


199R11568



HOOD & DECK PINNING KIT P/N 1617

1. Determine stud location on hood or deck and drill hole.
2. Place stud in hole to proper height of hood so stud is level with hood in which chrome pin goes through.
3. Lower hood to find location, then drill hole for stud.
4. Adjust stud height so hole will allow washer and chrome pin to be installed.
5. Depending on style, locate and install chrome washer by either removing the backing paper for the self-adhesive type, or drill four 3/32" holes, then screw chrome plate to hood. Install chrome hood pin. It may be necessary to readjust stud height.
6. Replacement scuff plates, lanyard cables, and safety clips are available at www.holley.com.

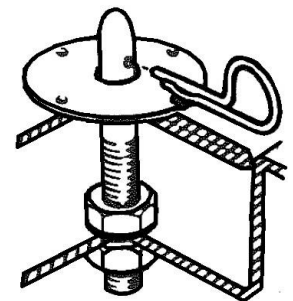


199R11568



HOOD & DECK PINNING KIT P/N 1617

1. Determine stud location on hood or deck and drill hole.
2. Place stud in hole to proper height of hood so stud is level with hood in which chrome pin goes through.
3. Lower hood to find location, then drill hole for stud.
4. Adjust stud height so hole will allow washer and chrome pin to be installed.
5. Depending on style, locate and install chrome washer by either removing the backing paper for the self-adhesive type, or drill four 3/32" holes, then screw chrome plate to hood. Install chrome hood pin. It may be necessary to readjust stud height.
6. Replacement scuff plates, lanyard cables, and safety clips are available at www.holley.com.



199R11568