

MSD[®] IGNITION **INSTALLATION INSTRUCTIONS**

MSD 5 Ignition Control PN 5200

Note: Read these instructions completely before attempting any installation.

Parts Included:

- 1 - MSD 5 Ignition, PN 5200
- 4 - Self Tapping Mounting Screws
- 1 - Parts Bag

WARNING: During installation, disconnect the battery cables. When disconnecting the cables, always remove the Negative cable first and install it last.

Note: The MSD 5 cannot be triggered by a magnetic pickup.

MOUNTING

Mount the MSD 5 Ignition away from direct engine heat sources. Make sure the wires and harness can reach their connections. Using the unit as a template, mark the locations of the mounting holes. Remove the unit and use a 1/8" bit to drill the four holes. Use the four self tapping screws to mount the unit.

WIRING

The MSD 5 Ignition is installed between the ignition coil and the triggering device. It is triggered by the WHITE wire through points or an electronic ignition. It can only be used on inductive ignition systems.

Before attempting any wiring, find which diagram illustrates your vehicle's ignition system. In the installation, it may be necessary to use the supplied wire splice devices. Figure 1 shows the correct procedure for these splices.

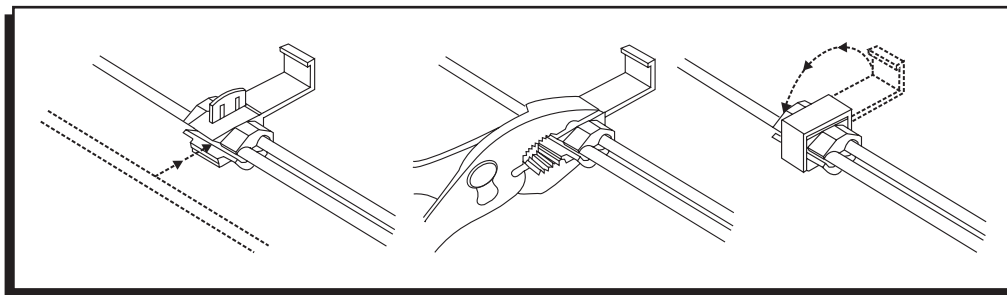


Figure 1 Using the Wire Splices.

The wires of the MSD 5 Ignition Control are color coded for easy installation.

RED	Connects to coil positive.
ORANGE	Connects to coil negative.
BLACK	Connects to engine ground.
WHITE	Points or electronic ignition trigger.

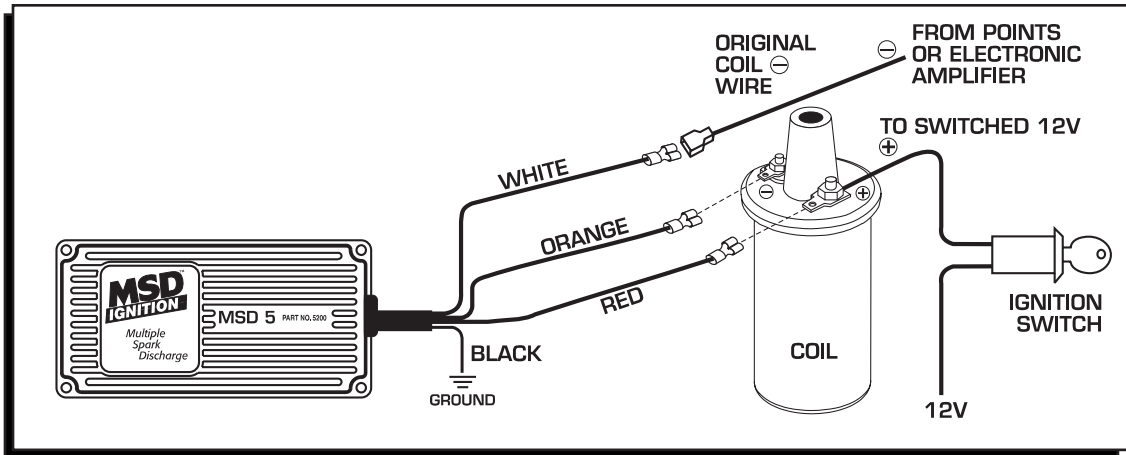


Figure 2 General Wiring to Breaker Points or an Electronic Ignition.

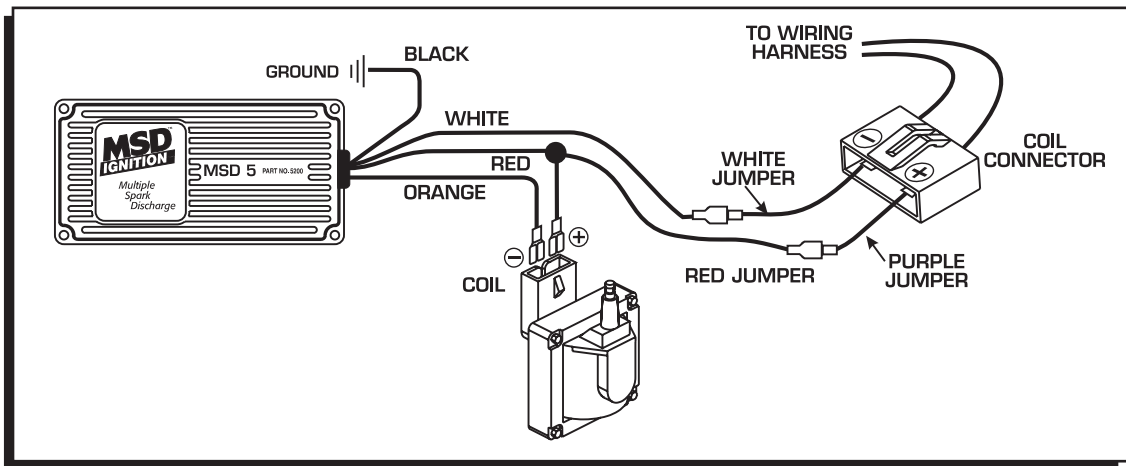


Figure 3 Wiring a Ford TFI Ignition.

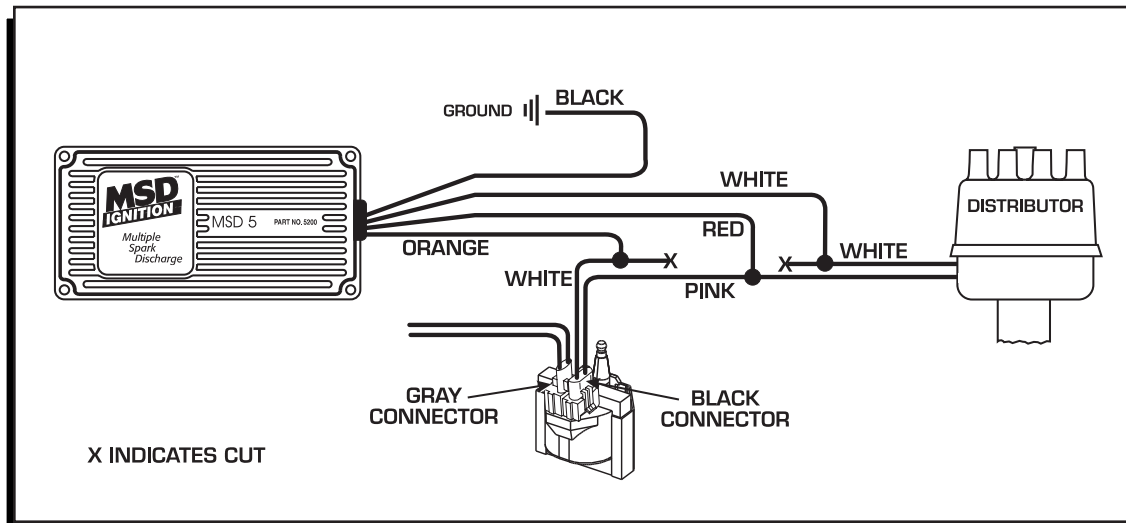


Figure 4 Wiring a GM Dual Connector Coil.

Using an MSD PN 8874, 8876, 8877 Harness

MSD offers wiring harnesses to simplify the installation of the Blaster on a Ford TFI ignition, PN 8874, or a GM external, dual connector coil, PN 8876 and PN 8877 for 1996 - on GM coils.

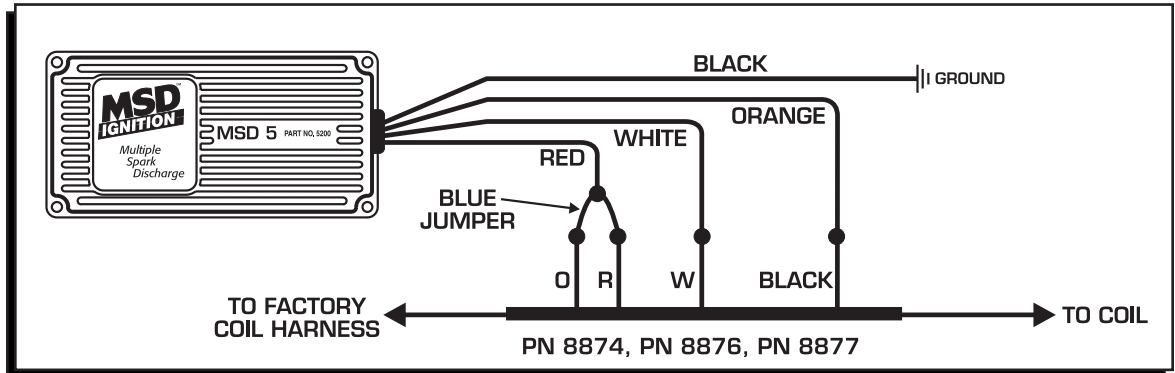


Figure 5 Wiring with an MSD Harness.

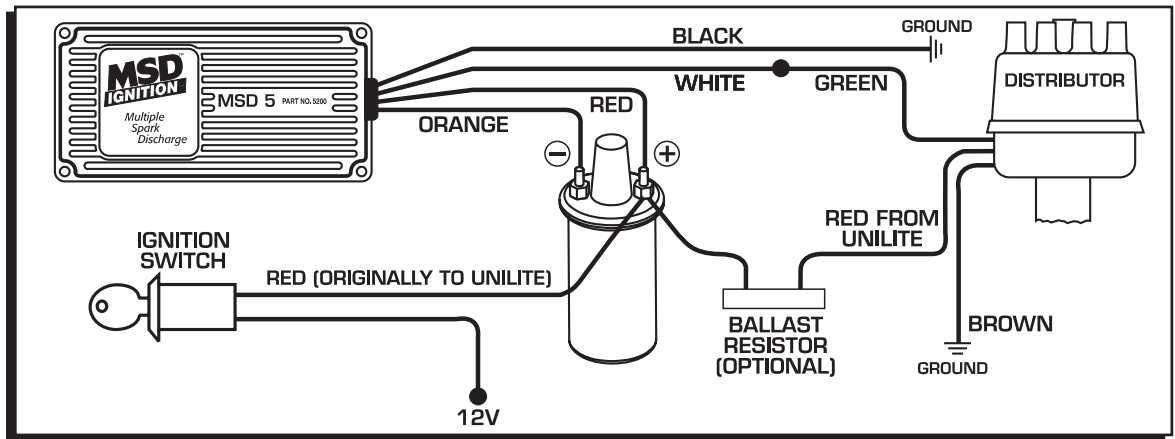


Figure 6 Wiring to a Mallory Unilite

GENERAL FOREIGN CAR

The following schematic is very general to import vehicles. Some systems may look different, however they function in basically the same manner. The MSD 5 can only be installed on inductive style ignitions. If you do not know if your vehicle is an inductive discharge design, connect a test light to ground, turn the key to the ON position and check for power at the coil positive terminal. **DO NOT START THE ENGINE.** If there is power, it is an inductive ignition. If there is no power on the terminal it is capacitive discharge and the MSD 5 cannot be installed.

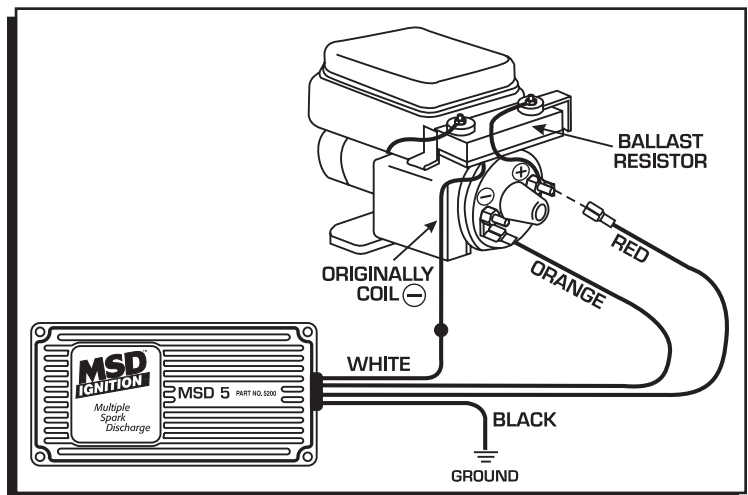


Figure 7 General Wiring to a Foreign Car.

Note: Most foreign vehicles with fuel injection will require a Tach Adaptor, PN 8910. See page 4 for details.

TACH ADAPTER

The PN 8910 will be required for foreign vehicles with fuel injectors. Some Ford tachometers may also require the PN 8910 to operate. Figure 8 shows the installation of the PN 8910.

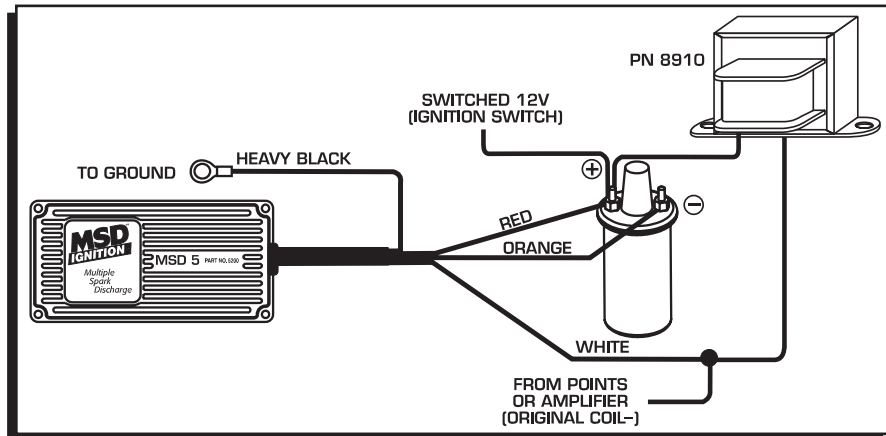


Figure 8 Installing the PN 8910 Tach Adapter.

TROUBLESHOOTING

If the vehicle will not start, check over all of the wiring and connections to make sure they are tight, secure and clean. Also make sure the wires are not routed near engine heat sources, moving parts or sharp edges that may rub through. If all of the wires are in good condition, test the unit for spark.

1. Make sure the key is OFF. Remove the coil wire from the distributor cap and set it approximately 1/2" from a good ground.
2. Disconnect the WHITE wire from the trigger source.
3. Turn the key on, DO NOT crank the engine. Tap the WHITE wire to ground several times. Each time the WHITE wire is removed from ground a spark should jump from the coil wire to ground. If there is no spark, the MSD 5 is at fault. The unit may be sent to MSD Ignition for repair. See the Service and Warranty Section.

Service

In case of malfunction, this MSD component will be repaired free of charge according to the terms of the warranty. When returning MSD components for warranty service, **Proof of Purchase** must be supplied for verification. After the warranty period has expired, repair service is based on a minimum and maximum fee.

All returns must have a Return Material Authorization (RMA) number issued to them before being returned. To obtain an RMA number please contact MSD Customer Service at 1 (888) MSD-7859 or visit our website at www.msdisignition.com/rma to automatically obtain a number and shipping information.

When returning the unit for repair, leave all wires at the length in which you have them installed. Be sure to include a detailed account of any problems experienced, and what components and accessories are installed on the vehicle. The repaired unit will be returned as soon as possible using Ground shipping methods (ground shipping is covered by warranty). For more information, call MSD Ignition at (915) 855-7123. MSD technicians are available from 7:00 a.m. to 6:00 p.m. Monday - Friday (mountain time).

Limited Warranty

MSD IGNITION warrants this product to be free from defects in material and workmanship under its intended normal use*, when properly installed and purchased from an authorized MSD dealer, for a period of one year from the date of the original purchase. This warranty is void for any products purchased through auction websites. If found to be defective as mentioned above, it will be repaired or replaced at the option of MSD Ignition. Any item that is covered under this warranty will be returned free of charge using Ground shipping methods.

This shall constitute the sole remedy of the purchaser and the sole liability of MSD Ignition. To the extent permitted by law, the foregoing is exclusive and in lieu of all other warranties or representation whether expressed or implied, including any implied warranty of merchantability or fitness. In no event shall MSD Ignition or its suppliers be liable for special or consequential damages.

*Intended normal use means that this item is being used as was originally intended and for the original application as sold by MSD Ignition. Any modifications to this item or if it is used on an application other than what MSD Ignition markets the product, the warranty will be void. It is the sole responsibility of the customer to determine that this item will work for the application they are intending. MSD Ignition will accept no liability for custom applications.