



PART NUMBER: **N1474CC,**
N1574CC

PRODUCT: **STEPS**

APPLICATION: **15-16 NAVARA**

Parts Included:	Qty
-----------------	-----

Driver side step	1
------------------	---

Passenger side step	1
---------------------	---

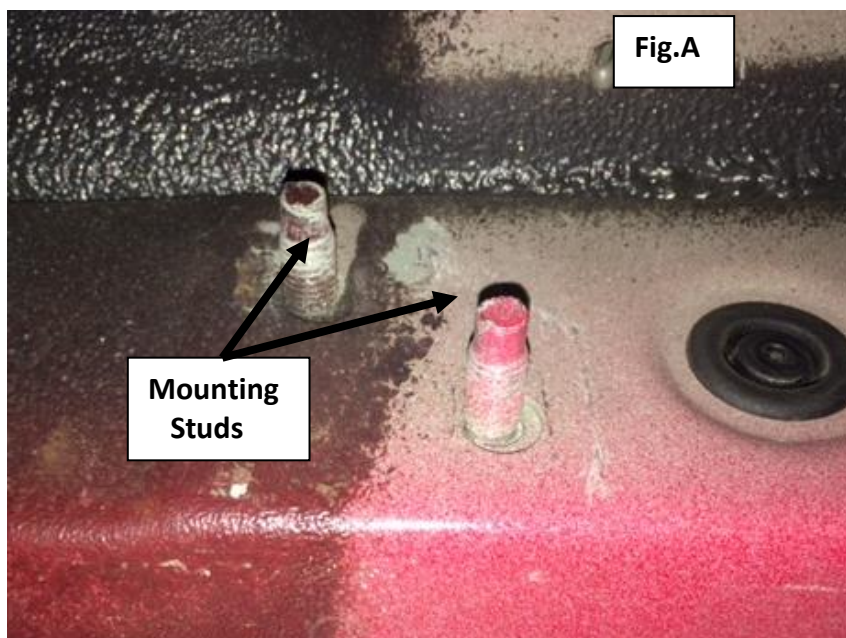
Hardware pack:	1
----------------	---

M8 flanged hex nuts	12
---------------------	----



INSTALLATION:

Step 1: Remove factory running bars if equipped and set aside. This will expose the 6 factory mounting studs. **(Fig. A)**



Step2: Starting with the driver side, align the step bar brackets with the OE mounting studs and Fasten (hand tighten) with the supplied M8 flanged nuts. **(Fig.B)**



Step3: After final alignment torque all hardware to 15-20 ft/lbs.

Step4: Repeat steps1-3 for passenger side step.

Step 5: Your installation is now complete.

