

# PRO RYDE SUSPENSION SYSTEMS

## EXACTLY THE WAY YOU WANT IT.™

### PRO RYDE ADJUSTABLE UPPER STRUT FRONT LIFT KIT INSTALLATION 2019 AND NEWER GM 1500 TRUCK 2WD/4WD/AWD T1XX ONLY PATENTED IMPORTANT!

Read ALL WARNINGS and information contained in these instructions PRIOR to installing this product. Vehicle Owner MUST be provided the IMPORTANT VEHICLE OWNER'S INFORMATION section of these instructions after installation of this product.

#### Bill of Materials

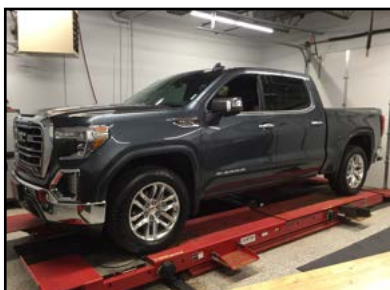
- (1) Installation Instructions & Warnings
- (2) 3-Piece Patented Upper Strut Kits
- (6) M10-1.5 Nylock Nuts
- (2) 7/8"-14 Large Adjustment Locking Jam Nuts (1" HEX)
- (2) 3/4" Snap Rings
- (2) Tear-Resistant Nylon Bearings



**ALWAYS WEAR PROPER EYE PROTECTION & USE TOOLS SPECIFIC TO THE JOB!**

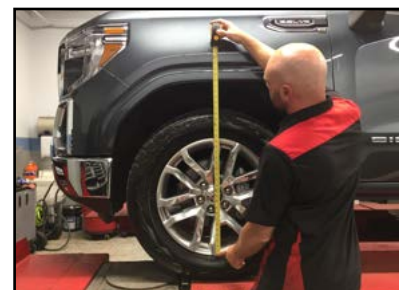
**THIS PRODUCT HAS BEEN FACTORY PRE-TREATED WITH MARINE GRADE ANTI-SEIZE COMPOUND. NO LUBRICATION OF THE LARGE ADJUSTER THREADS IS NECESSARY PRIOR TO INSTALLATION.**

**STEP 1:** Position vehicle on a stable, flat surface or automotive lift. Secure vehicle with wheel chocks. Be sure engine is turned OFF and vehicle is in PARK.



**STEP 2:** On a flat, level surface, MEASURE preinstallation ride height, FRONT & REAR, and write down measurements.

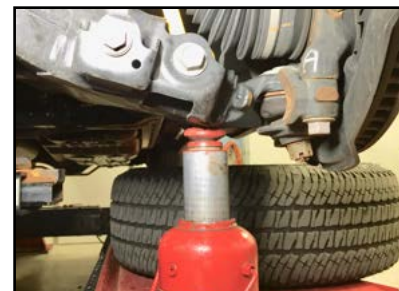
Front (L) \_\_\_\_\_  
Front (R) \_\_\_\_\_  
Rear (L) \_\_\_\_\_  
Rear (R) \_\_\_\_\_



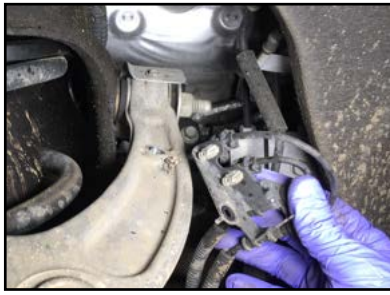
**STEP 3:** Suspend front wheels, lifting by the frame. Secure with jack stands. Remove skidplate (if equipped).



**STEP 4:** Remove front wheel and support lower control arm with floor or bottle jack.



**STEP 5:** Disconnect ABS/ vacuum line bracket, to allow slack.



**STEP 6:** Disconnect sway bar link from the lower control arm.



**STEP 7:** Loosen tie rod nut. Leave nut loose enough to remove with fingers. Strike knuckle with a hammer on outside of tie rod taper as shown.



**STEP 8:** Loosen ball joint nut. Leave nut loose enough to remove with fingers. Strike knuckle with a hammer on outside of the ball joint taper.



**STEP 9:** Using pry bar put pressure on upper control arm by inserting pry bar end under spring. Push down and remove ball joint nut. **SLOWLY** release pressure on pry bar until upper control arm is free.



**STEP 10:** Carefully lift up plastic wire loom bracket and remove the three upper strut mounting fasteners. Passenger side is more difficult, locate and remove inner nut from under the hood.



**STEP 11:** Remove lower strut mounting bolts.



**STEP 12:** Lower supporting jack under lower control arm slowly. Carefully remove OEM strut assembly.



**STEP 13:** Turn kit upside down. Adjust Inner Adjustment Screw **UP** so there is plenty of space for Strut Plate.



**STEP 14:** Insert strut plate with groove facing away from the kit, towards the strut. Make sure Inner Adjustment Screw is extended to not cause interference.



**IMPORTANT!! STRUT PLATE MUST BE INSTALLED!!**

**IMPORTANT!! STRUT PLATE MUST BE INSTALLED!!**

**STEP 15:** Install ONE Nylon Bearing to top of each Inner Adjustment Screw, as shown, prior to installing each Top Connection Plate.



**STEP 16:** Install Lift Machine on top of strut using supplied nylock nuts. Torque to Manufacturer's specifications. Using a cutoff wheel, trim strut studs 1/8" above nylock nut.

**Double check you installed strut plate first!!**



**STEP 17: IMPORTANT!** Be sure the Threaded Adjustment Screw Rotates FREELY after securing kit to the OEM strut. If not, slightly loosen the three upper stud nuts and rotate the Threaded Adjustment Screw slightly **UPWARD**. Re-torque upper stud nuts to OEM specifications and recheck that the Threaded Adjustment Screw now rotates properly for adjustment after installation. **If this is skipped the kit will not adjust after installation!!**

**STEP 18:** Install Top Plate on Lift Machine assembly. Make sure to line up three Top Plate studs with the three strut studs.



**STEP 19:** Install Jam Nut finger tight. Using a snap ring pliers, install snap ring.

Jam nut is 1" HEX.  
Inner Adjustment Screw is 16MM HEX.



**STEP 20:** Install Strut assembly back in vehicle.



**STEP 21:** Install OEM fasteners a few turns to keep strut lined up. For easiest installation, do not tighten upper strut nuts until lower strut bolts are installed.



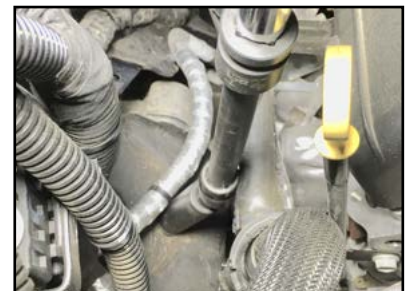
**STEP 22:** Line up lower strut mounting holes and insert OEM bolts. Torque lower strut bolts then upper strut nuts to Manufacturer's specifications.



**STEP 23:** Reattach factory plastic wire loom connection plate. Drivers side shown.



**STEP 24:** On passenger side, inner strut is best accessed under hood. Inner strut nut on passenger side shown. Use OEM nut and torque to Manufacturer's specifications. Make sure to reattach OEM wire attachment to this stud.



**STEP 25:** Reattach factory plastic wire loom connection plate. Passenger side shown.



**STEP 26:** Using a pry bar hold upper control arm down and insert ball joint into knuckle. Torque to manufacturers' specifications.



**STEP 27:** Reconnect tie rod end and torque to Manufacturer's Specifications.



**STEP 28:** Reconnect ABS/Vacuum line brackets that were disconnected in Step 5.



**STEP 29:** When both sides of vehicle are complete, then reattach sway bar end links on both sides of vehicle. Torque to Manufacturer's Specifications.



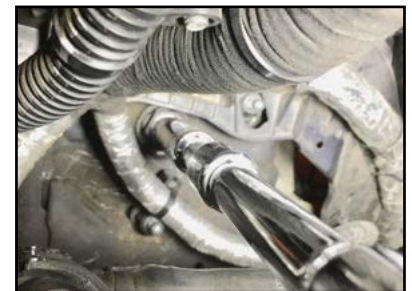
**STEP 30:** Reinstall tire/wheel assemblies, and check that ALL suspension components and lug nuts have been properly torqued to manufacturer's specs.



**STEP 31:** Lower the vehicle, jounce suspension and measure ride height of EACH SIDE of the vehicle. Measure from the bottom of the wheel/rim to the lip of the fender.



**Passenger side: Accessible from under hood.**

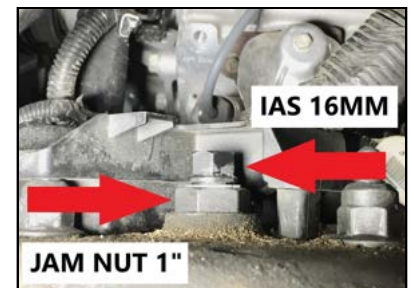


**STEP 32:** IMPORTANT! ADJUSTING FRONT RIDE HEIGHT AFTER INSTALLATION.

- 1) Lift vehicle by the frame, allowing wheels to hang freely. Secure using jack stands & wheel chocks.
- 2) Loosen the Large 7/8"-12 Top **JAM NUT** several complete turns with 1" wrench or socket.
- 3) Using a 16MM wrench or socket, engage the Inner Adjustment **Screw IAS** at the TOP of the new lift kit.
- 4) Turn **COUNTER-CLOCKWISE** to **INCREASE** ride height, and **CLOCKWISE** to **DECREASE** ride height.
- 5) Each full turn of the Threaded Adjuster will result in approximately 1/4" of ride height change.
- 6) Each 1/2 turn of the Threaded Adjuster will result in approximately 1/8" of ride height change.
- 7) Retighten **JAM NUT** after height adjustments are complete.

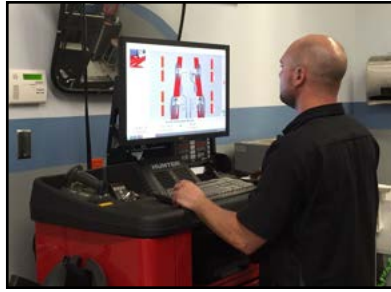
LOWER THE VEHICLE, JOUNCE SUSPENSION, AND MEASURE RIDE HEIGHT. BE SURE VEHICLE IS LEVEL FROM SIDE-TO-SIDE AND AT THE DESIRED RIDE HEIGHT, MAKING ADDITIONAL ADJUSTMENTS AS REQUIRED. RETORQUE ALL FASTENERS TO OEM SPECS.

**IMPORTANT! RETIGHTEN THE LARGE 7/8"-12 TOP JAM NUT AFTER FINAL ADJUSTMENTS ARE MADE.**



**Drivers side: Accessible from wheelwell.**

**STEP 34:** Perform a complete wheel alignment, utilizing a Certified Alignment Technician with experience working on lifted vehicles.



**STEP 35:** ADJUST HEADLIGHTS to accommodate new front ride height position

**IMPORTANT!** Check all fasteners for proper torque. Check to insure there is adequate clearance between all rotating, mobile, fixed and heated members. Check steering for interference and proper working order. Test brake system.

**Before:**



**After:**



Complete a full 4-corner lift and install a ProRYDE SuperBLOK ADJUSTABLE rear Lift Kit!



## IMPORTANT VEHICLE OWNER'S INFORMATION

### 2019 AND NEWER GM 1500 TRUCK 2WD/4WD/AWD

T1XX ONLY

PATENTED

#### Adjusting Lift/Leveling kit after installation

**(1) Always wear proper eye protection! Position vehicle on a stable, flat surface and SUSPEND FRONT WHEELS, lifting by the frame with a floor jack or lift jack. Secure frame with jack stands. Chock tires and turn engine OFF prior to adjustment!**

**(2) With a 1" wrench or socket, loosen the Large 7/8"-12 Jam Nut** at top of strut tower SEVERAL complete turns.

**(3)** Using a 16mm wrench or socket, engage the Inner Adjustment Screw IAS at the TOP of the Adjustable Upper Strut Kit.

**Turn COUNTER-CLOCKWISE to INCREASE ride height, and CLOCKWISE to DECREASE ride height.**

**(4) JOUNCE SUSPENSION** and be sure vehicle is LEVEL from side-to-side and at the desired ride height, making adjustments as required. Re-torque all fasteners to OEM specifications and **retighten the Large Top Jam Nut** to the Top Connection Plate of the kit!

Under no circumstances should this product be altered to adjust ride height beyond its design limits.

Remember! Any change to ride height will affect vehicle's Wheel Alignment and Handling! Always realign the vehicle any time ride height is adjusted, and be sure to adjust headlights as necessary.

**Minimum Ride Height Change: 1.75"** (at wheel well)

**Maximum Ride Height Change: 2.25"** (at wheel well)

#### **WARNING**

**This product should only be installed and adjusted by an ASE certified professional mechanic with proper tools and safety equipment.**

Installation of this product modifies vehicle ride height. The driver of this vehicle should avoid unnecessary or abrupt maneuvers, sharp turns and other driving conditions that could lead to rollover or other serious accident. This product will affect vehicle center of gravity resulting in less than the original OE stability characteristics.

The manufacturer of this product releases itself from any liability or consequence, inclusive but not limited to personal injury, failure of components or damage to vehicle or person as a result of installing this product.

Warranties may be declined for any parts installed by any person other than an ASE certified professional. No warranty will be made for any other OEM or aftermarket components that may be affected by the installation of this product either in use or during installation. This kit is intended for use on stock suspensions WITHOUT any previous modifications whatsoever. Installation of this kit in conjunction with other aftermarket products will be done at vehicle owner's own risk, and voids any and all warranties.

Installation of this part MAY limit or void some vehicle manufacturer's warranties!

**ALWAYS DRIVE SAFELY, REDUCE SPEED, AND WEAR YOUR SEAT BELT.**

#### **LIMITED LIFETIME WARRANTY**

This product is warranted to be free of defects in materials and workmanship to the original purchaser on the vehicle in which it is originally installed. This warranty does not cover loss of time, labor, or any other components as a result of damage. This warranty may be void if this product is installed by any person other than an ASE certified professional.