

# PRO RYDE SUSPENSION SYSTEMS

# PRO RYDE

EXACTLY THE WAY YOU WANT IT.™

## PRO RYDE ADJUSTABLE UPPER COIL SPRING FRONT LIFT KIT INSTALLATION 2015 & up RAM POWER WAGON PATENTED

### IMPORTANT!

Read ALL WARNINGS and information contained in these instructions PRIOR to installing this product. Vehicle Owner MUST be provided the IMPORTANT VEHICLE OWNER'S INFORMATION section of these instructions after installation of this product.

#### Bill of Materials

- (1) Installation Instructions & Warnings
- (2) 3-Piece Patented Adjustable Upper Coil Spacers
- (2) Extended Pass-thru Jam Nuts
- (2) Nylon Weather & Tear-resistant POM Plates
- (2) Large Lock Washers
- (2) Shock Extenders & Hardware
- (2) 8mm Press-Fit Studs and Nuts
- (2) 6mm Press-Fit Studs and Nuts



**ALWAYS WEAR PROPER EYE PROTECTION & USE TOOLS SPECIFIC TO THE JOB!**

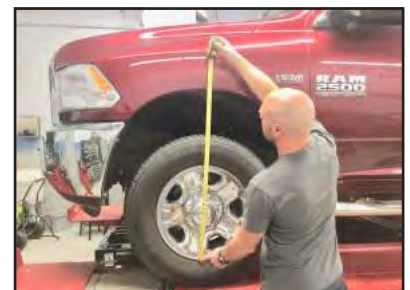
**THIS PRODUCT HAS BEEN FACTORY PRE-TREATED WITH MARINE GRADE ANTI-SEIZE COMPOUND. NO LUBRICATION OF THE LARGE ADJUSTER THREADS IS NECESSARY PRIOR TO INSTALLATION.**

**STEP 1:** Position vehicle on a stable, flat surface or automotive lift. Be sure engine is turned OFF and vehicle is in PARK. Secure vehicle with wheel chocks.



**STEP 2:** On a flat, level surface, MEASURE preinstallation ride height, FRONT & REAR, and write down measurements.

Front (L) \_\_\_\_\_  
Front (R) \_\_\_\_\_  
Rear (L) \_\_\_\_\_  
Rear (R) \_\_\_\_\_



**STEP 3:** Lift front of vehicle and remove front wheels.



**STEP 4:** Remove sway bar end links. Disconnect ABS/Vacuum lines from bracket to allow slack.



**STEP 5:** Supporting the front axle with suitable jack, disconnect lower shock bolt. Save OEM fastener for use in Step 18.



**STEP 6:** Utilizing spring clamps will simplify removal & reinstallation of coil springs. Tighten clamps and carefully lower axle to remove spring.



**STEP 7:** Remove Isolator and Locate OEM holes in spring mount.

**NOTE:** Some models may have only one hole.



**STEP 8:** . Install 6mm and 8mm Press Fit Studs on Lift Machine by tightening with the provided nuts or using a press. Remove nuts after stud is fully seated in Lift Machine. Only install studs corresponding to holes in spring mount.



**STEP 9: Important!** Install white Nylon Bearing on Inner Adjustment Screw.



**STEP 10:** Install Top Plate and Lock Washer.



**STEP 11:** Install Jam Nut. Do not tighten yet.



**STEP 12:** Install OEM isolator on Lift Machine. Make sure to place nub into the hole on Top Plate.



**STEP 13:** Install Lift Machine assembly with isolator into vehicle. Make sure kit is slightly above lowest position.



**STEP 14:** Tighten press fit studs with supplied nuts.



**STEP 15:** Note this picture is showing kit adjusted one thread above lowest position. Make sure kit will adjust before going further!



**STEP 16:** With spring still compressed, install the spring. Depending on model, it may be necessary to rotate isolator towards back of vehicle. Loosen and remove spring compressors.



**STEP 17:** Install shock extensions using supplied hardware. Torque to 90 ft/lbs.



**STEP 18:** Lift axle with jack and rotate extension so nut is on frame side and tighten lower mount with OEM hardware. Torque to OEM Specifications.



**STEP 19:** Reinstall sway link and tighten to manufacturer's specifications.



**STEP 20:** To adjust, loosen Jam Nut with 1" wrench one turn. **Do not remove!**



**STEP 21:** With Jam nut slightly loosened, insert 1/2" Drive extension and ratchet. Turn Inner Adjustment Screw counter-clockwise (LEFT) with ratchet to desired height. **NOTE:** Actual height of kit will be actual height of lift.



**STEP 22:** Once final height adjustment is reached, tighten Jam Nut with 1" wrench.



**STEP 23:** Reconnect ABS/Vacuum lines to bracket clips that were disconnected in Step 4.



**STEP 24:** Reinstall tire/wheel assemblies, and check that ALL suspension components and lug nuts have been properly torqued to manufacturer's specifications.



**STEP 25:** Lower the vehicle, jounce suspension and measure ride height of EACH SIDE of the vehicle, front & rear. Measure from the bottom of the wheel/rim to the lip of the fender.

### STEP 26: ADDITIONAL FRONT RIDE HEIGHT ADJUSTMENTS

**1) Always wear proper eye protection!** Position vehicle on a stable, flat surface and SUSPEND FRONT WHEELS, lifting by the frame with a floor jack or lift jack. Secure frame with jack stands. **Chock tires and turn engine OFF prior to adjustment!**

**(2) Loosen the Extended Jam Nut** with 1" wrench within the coil spring SEVERAL complete turns.

**(3)** Using a 1/2" ratchet and extension, engage the 1/2" Threaded Adjuster thru the coil spring and through the Extended Jam Nut. **Turn COUNTER-CLOCKWISE to INCREASE ride height, and CLOCKWISE to DECREASE ride height.**

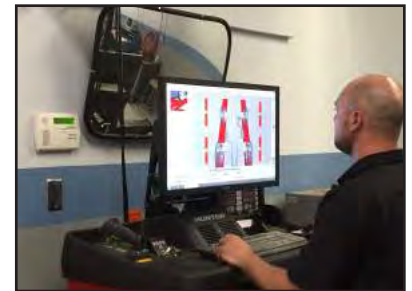
**(4)** Be sure vehicle is LEVEL from side-to-side and at the desired ride height, making adjustments as required. Re-torque all fasteners to OEM specifications. **Be sure to retighten the Extended Jam Nut to properly secure adjustment!**



**IMPORTANT!** Check all fasteners for proper torque. Check to insure there is adequate clearance between all rotating, mobile, fixed and heated members. Check steering for interference and proper working order. Test brake system.

**STEP 27:** ADJUST HEADLIGHTS to accommodate new front ride height position.

**STEP 28:** Perform a complete wheel alignment, utilizing a Certified Alignment Technician with experience working on lifted vehicles.



**Before:**



**After:**



Complete a full 4-corner lift and install a PRORYDE ADJUSTABLE rear Lift Kit!



## IMPORTANT VEHICLE OWNER'S INFORMATION

### 2015 & up RAM POWER WAGON

#### PATENTED

#### Adjusting Lift/Leveling kit after installation

**(1) Always wear proper eye protection! Position vehicle on a stable, flat surface and SUSPEND FRONT WHEELS, lifting by the frame with a floor jack or lift jack. Secure frame with jack stands. Chock tires and turn engine OFF prior to adjustment!**

**(2) Loosen the Extended Jam Nut** with a 1" wrench within the coil spring SEVERAL complete turns.

**(3) Using a 1/2" ratchet and extension, engage the 1/2" Threaded Adjuster thru the coil spring and through the Extended Jam Nut. Turn COUNTER-CLOCKWISE to INCREASE ride height, and CLOCKWISE to DECREASE ride height.**

**(4) Be sure vehicle is LEVEL from side-to-side and at the desired ride height, making adjustments as required. Re-torque all fasteners to OEM specifications. Be sure to retighten the Extended Jam Nut to properly secure adjustment!**

Under no circumstances should this product be altered to adjust ride height beyond its design limits.

Remember! Any change to ride height will affect vehicle's Wheel Alignment and Handling! Always realign the vehicle any time ride height is adjusted, and be sure to adjust headlights as necessary.

**Minimum Ride Height Change: 1.5"** (at wheel well)

**Maximum Ride Height Change: 2.5"** (at wheel well)

#### **WARNING**

**This product should only be installed and adjusted by an ASE certified professional mechanic with proper tools and safety equipment.**

Installation of this product modifies vehicle ride height. The driver of this vehicle should avoid unnecessary or abrupt maneuvers, sharp turns and other driving conditions that could lead to rollover or other serious accident. This product will affect vehicle center of gravity resulting in less than the original OE stability characteristics.

The manufacturer of this product releases itself from any liability or consequence, inclusive but not limited to personal injury, failure of components or damage to vehicle or person as a result of installing this product.

Warranties may be declined for any parts installed by any person other than an ASE certified professional. No warranty will be made for any other OEM or aftermarket components that may be affected by the installation of this product either in use or during installation. This kit is intended for use on stock suspensions WITHOUT any previous modifications whatsoever. Installation of this kit in conjunction with other aftermarket products will be done at vehicle owner's own risk, and voids any and all warranties.

Installation of this part MAY limit or void some vehicle manufacturer's warranties!

**ALWAYS DRIVE SAFELY, REDUCE SPEED, AND WEAR YOUR SEAT BELT.**

#### **LIMITED LIFETIME WARRANTY**

This product is warranted to be free of defects in materials and workmanship to the original purchaser on the vehicle in which it is originally installed. This warranty does not cover loss of time, labor, or any other components as a result of damage. This warranty may be void if this product is installed by any person other than an ASE certified professional.