

PRO RYDE SUSPENSION SYSTEMS

PRO RYDE

EXACTLY THE WAY YOU WANT IT.™

PRO RYDE ADJUSTABLE FRONT LIFT KIT INSTALLATION

2007 and up GM 1500 TRUCK & SUV 2WD/4WD/AWD

Including 2019 and up TRAIL BOSS & AT4

PATENTED

IMPORTANT!

Read ALL WARNINGS and information contained in these instructions PRIOR to installing this product. Vehicle Owner MUST be provided the IMPORTANT VEHICLE OWNER'S INFORMATION section of these instructions after installation of this product.

Bill of Materials

- (1) Installation Instructions & Warnings
- (1) 2-Piece LH Aluminum Lower Strut Spacers
- (1) 2-Piece RH Aluminum Lower Strut Spacers
- (4) 90mm 10.9 Grade Replacement Bolts & Hdwr.



ALWAYS WEAR PROPER EYE PROTECTION & USE TOOLS SPECIFIC TO THE JOB!

STEP 1: Position vehicle on a stable, flat surface or automotive lift. Be sure engine is turned OFF and vehicle is in PARK. Secure vehicle with wheel chocks.



STEP 2: On a flat, level surface, MEASURE preinstallation ride height, FRONT & REAR, and write down measurements.

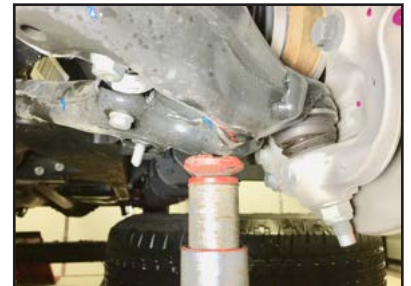
Front (L) _____
Front (R) _____
Rear (L) _____
Rear (R) _____



STEP 3: Suspend front wheels lifting by frame or front crossmember. Secure with jackstands. After vehicle is secure, remove wheel.



STEP 4: Support lower control arm and knuckle assembly with jack or jack stand.



STEP 5: Determine amount of lift.

0.50" LIFT: Install recessed Aluminum Strut Spacer.



0.75" LIFT: Install raised Aluminum Strut Spacer.



1.00" LIFT: Install both interlocking Aluminum Strut Spacers together.



STEP 6: Disconnect ABS/vacuum line brackets, if equipped to allow slack.



STEP 7: Disconnect sway bar end link from sway bar on both sides of vehicle.



*****BE SURE BRAKE LINES HAVE ADEQUATE SLACK, AND TO PROPERLY SUPPORT BRAKE & SPINDLE ASSEMBLY!*****

STEP 8: Loosen tie rod nut. With stud nuts still installed, separate outer tie rods from their tapers, using a hammer as shown.



STEP 9: Loosen ball joint nut. With stud nut still installed, strike with a hammer on knuckle outside of the ball joint taper.



STEP 10: Using a pry bar put pressure on upper control arm by inserting pry bar end under spring. Push down and remove ball joint nut. **SLOWLY** release pressure on pry bar until upper control arm is free.



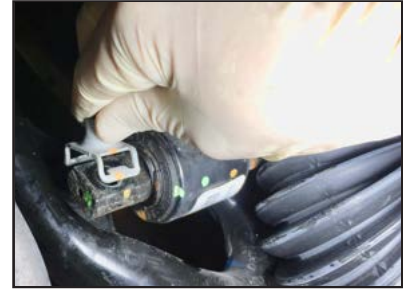
STEP 11: Carefully remove plastic wire holder from strut studs. Loosen the three upper strut mounting fasteners. It isn't completely necessary to remove the three nuts, loosening them a few turns will help the install of lower bolts.



STEP 12: Disconnect & remove lower strut mounting bolts.



STEP 13: Discard clips and OEM bolts.



STEP 14: Install Aluminum Lower Strut Spacer(s). Make sure to 'L' goes on Drivers Side and 'R' goes on Passenger side. Also Make sure slotted hole is placed under axle shaft.



STEP 15: Using bolts and nuts provided with the kit, insert bolts from top and torque nuts to OEM specifications.



STEP 16: Reconnect upper ball joint nut & outer tie rod nut. Use a pry bar to put pressure on upper control arm. If necessary raise jack below lower control arm.



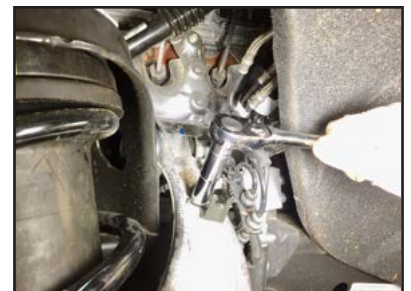
STEP 17: Reconnect sway bar link and torque to OEM specifications.



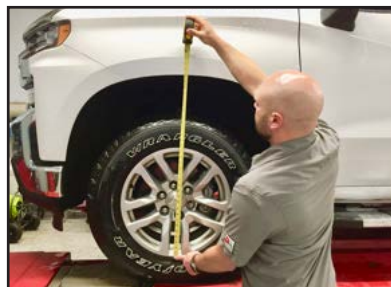
STEP 18: Reconnect ABS/Vacuum line brackets that were disconnected in Step 6. Torque to OEM specifications.



STEP 19: Reinstall tire/wheel assemblies, and check **ALL** suspension components and lug nuts have been properly torqued to OEM specifications.



STEP 20: Lower the vehicle, jounce suspension and measure ride height of EACH SIDE of the vehicle. Measure from the bottom of the wheel/rim to the lip of the fender.



STEP 21: Reinstall tire/wheel assemblies, and check **ALL** suspension components and lug nuts have been properly torqued to OEM specifications.



STEP 22: ADJUSTING FRONT RIDE HEIGHT AFTER INSTALLATION.

- 1) Lift vehicle by the frame, allowing wheels to hang freely. Secure using jack stands & wheel chocks.
- 2) Loosen upper ball joint stud nut, without completely removing. Break taper between ball joint and knuckle.
- 3) Loosen Outer Tie Rod End nut, without completely removing, then break taper.
- 4) Disconnect Sway Bar Link from lower control arm.
- 5) **LOOSEN Lower Shock bolt on SLOTTED end of U-shaped Lower Strut Spacer & REMOVE Lower Shock bolt on the NON-SLOTTED end. This will allow adjustments without moving CV driveshaft assembly and other suspension components.**
- 6) Install or remove U-shaped Lower Strut Spacers to achieve desired ride height changes.
- 7) Tighten Lower Shock Bolts to OEM specifications.
- 8) Reconnect Upper Ball Joint-to-knuckle, Outer Tie Rod End & Sway Bar Links.



LOWER THE VEHICLE, JOUNCE SUSPENSION, AND MEASURE RIDE HEIGHT. BE SURE VEHICLE IS LEVEL FROM SIDE-TO-SIDE AND AT THE DESIRED RIDE HEIGHT, MAKING ADDITIONAL ADJUSTMENTS AS REQUIRED. **IMPORTANT! Check all fasteners for proper torque. Check to insure there is adequate clearance between all rotating, mobile, fixed and heated members. Check steering for interference and proper working order. Test brake system.**

STEP 23: Perform a complete wheel alignment, utilizing a Certified Alignment Technician with experience working on lifted vehicles.



STEP 24: ADJUST HEADLIGHTS to accommodate new front ride height position

Before:



After:



Complete a full 4-corner lift and install a ProRYDE SuperBLOK ADJUSTABLE rear Lift Kit!



75-1065G-0120

IMPORTANT VEHICLE OWNER'S INFORMATION

2007 and up GM 1500 TRUCK & SUV 2WD/4WD/AWD

Including 2019 and up TRAIL BOSS & AT4

PATENTED

Adjusting Lift/Leveling kit after installation

Always wear proper eye protection! Position vehicle on a stable, flat surface and SUSPEND FRONT WHEELS, lifting by the frame with a floor jack or lift jack. Secure frame with jack stands. Chock tires and turn engine OFF prior to adjustment!

- 1) Loosen upper ball joint stud nut, without completely removing. Break taper between ball joint and knuckle.
- 2) Loosen Outer Tie Rod End nut, without completely removing, then break taper.
- 3) Disconnect Sway Bar Link from lower control arm.
- 4) **LOOSEN Lower Shock bolt on SLOTTED end of U-shaped Lower Strut Spacer & REMOVE Lower Shock bolt on the NON-SLOTTED end. This will allow adjustments without moving CV driveshaft assembly and other suspension components.**
- 5) Install or remove U-shaped Lower Strut Spacers to achieve desired ride height changes.
- 6) Tighten Lower Shock Bolts to OEM specifications.
- 7) Reconnect Upper Ball Joint-to-knuckle, Outer Tie Rod End & Sway Bar Links.

LOWER THE VEHICLE, JOUNCE SUSPENSION, AND MEASURE RIDE HEIGHT. BE SURE VEHICLE IS LEVEL FROM SIDE-TO-SIDE AND AT THE DESIRED RIDE HEIGHT, MAKING ADDITIONAL ADJUSTMENTS AS REQUIRED. **RETORQUE ALL FASTENERS TO OEM SPECIFICATIONS!**

Under no circumstances should this product be altered to adjust ride height beyond its design limits. Remember! Any change to ride height will affect vehicle's Wheel Alignment and Handling! Always realign the vehicle any time ride height is adjusted, and be sure to adjust headlights as necessary.

WARNING

This product should only be installed and adjusted by an ASE certified professional mechanic with proper tools and safety equipment.

Installation of this product modifies vehicle ride height. The driver of this vehicle should avoid unnecessary or abrupt maneuvers, sharp turns and other driving conditions that could lead to rollover or other serious accident. This product will affect vehicle center of gravity resulting in less than the original OE stability characteristics.

The manufacturer of this product releases itself from any liability or consequence, inclusive but not limited to personal injury, failure of components or damage to vehicle or person as a result of installing this product.

Warranties may be declined for any parts installed by any person other than an ASE certified professional. No warranty will be made for any other OEM or aftermarket components that may be affected by the installation of this product either in use or during installation. This kit is intended for use on stock suspensions WITHOUT any previous modifications whatsoever. Installation of this kit in conjunction with other aftermarket products will be done at vehicle owner's own risk, and voids any and all warranties.

Installation of this part MAY limit or void some vehicle manufacturer's warranties!

ALWAYS DRIVE SAFELY, REDUCE SPEED, AND WEAR YOUR SEAT BELT.

LIMITED LIFETIME WARRANTY

This product is warranted to be free of defects in materials and workmanship to the original purchaser on the vehicle in which it is originally installed. This warranty does not cover loss of time, labor, or any other components as a result of damage. This warranty may be void if this product is installed by any person other than an ASE certified professional.

75-1065G-0120