

RUGGED COVER II

Dodge Ram Box Premium Hard Tri-Fold Cover Installation Instructions

200 Universal Dr. • Owosso, MI 48867 • 989-725-8354 Fax: 989-725-8409 • 1-800-433-3604

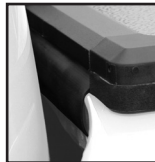


1

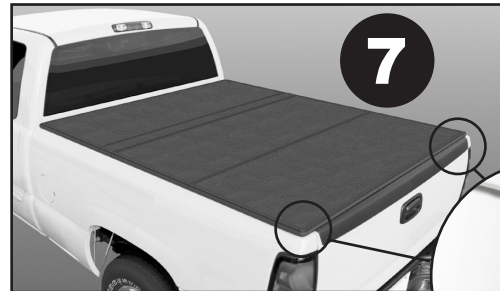
1. Place the cover on front of truck bed.

Note:

Look at step 10.



Place dust seal between cab and truck bed.

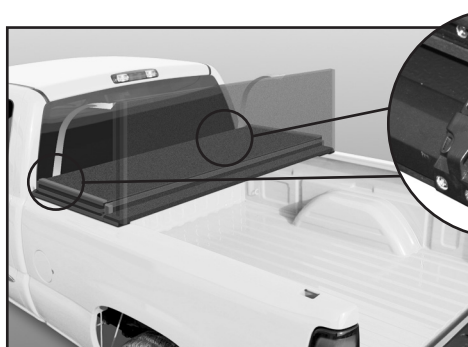


7

7. Cover is laying down flat.

- 8a. Secure tailgate clamp hooks for a snug fit.

8



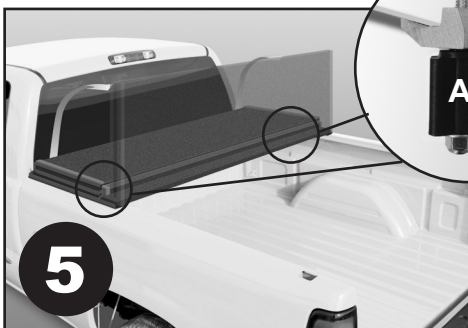
2

2. Undo both tie-down straps so cover can be unfolded.



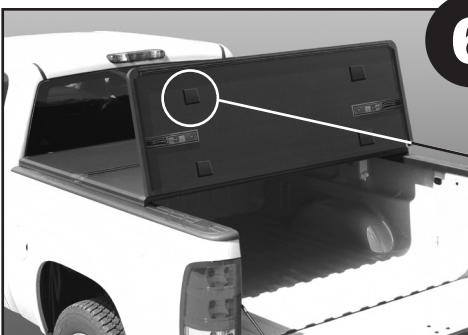
3

3. Unfold the cover all the way open to align cover on the truck bed rails before clamping.



5

5. Unfold first section.

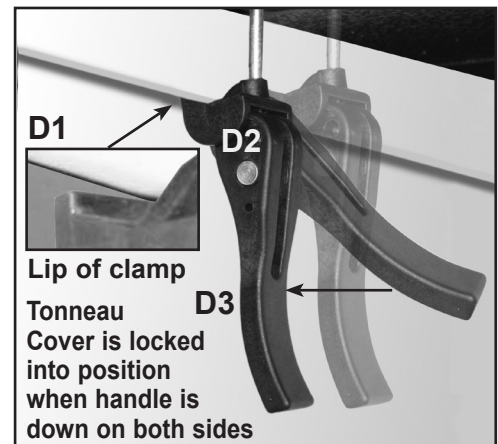


6

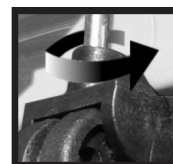
6. Unfold second section.

IMPORTANT

DO NOT remove foam blocks. They protect surface of panel when folding. Voids Warranty.



- 8b. To clamp cover down, put lip of clamp hooks under the side metal bed rail and push handle down. (See D1, D2, D3)

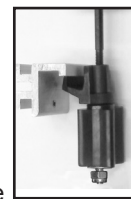


How To Adjust Clamps

- To adjust, turn clamp hook clockwise to tighten or counter clockwise to loosen.

9. Vehicles With Utility Track

- A. Slide aluminum blocks into track, position and tighten set-screw.
- B. Secure cab and tailgate clamp hooks on to aluminum blocks.



Cab



Tailgate

10. Add Extra Cab Corner Foam Pc.

- A. Apply extra cab corner foam piece to existing cab corner foam piece if you don't have drop-in bedliner.

*Patent No's.

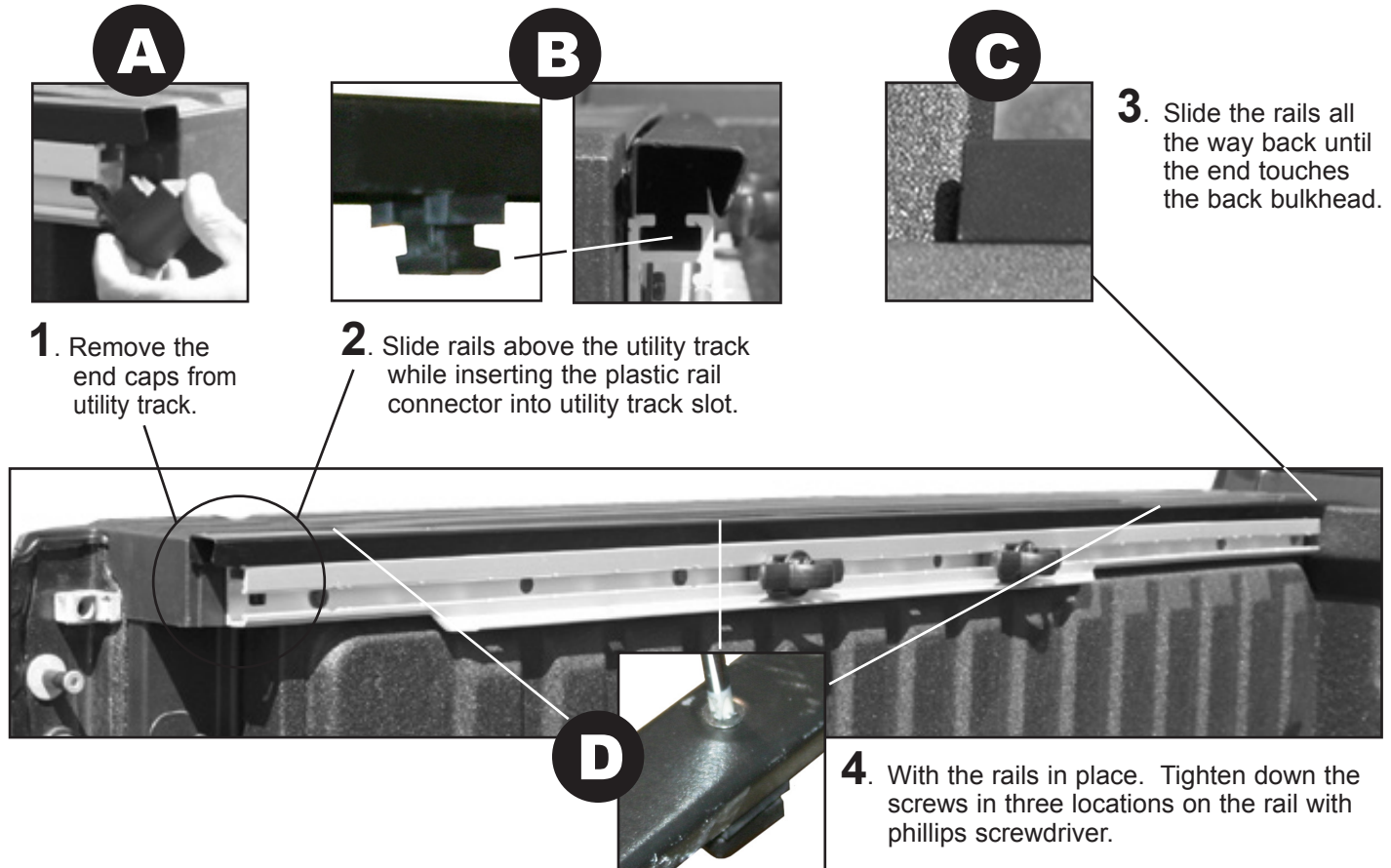
8,348,328/8,256,824/8,511,736

TRUCK HERO
company

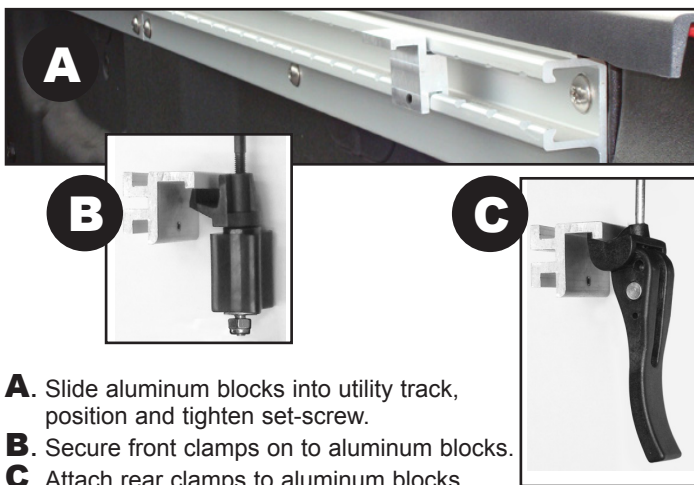


www.ruggedliner.com

1 Dodge Ram Box Rail Installation Instructions



9 Utility Track System Blocks



- D.** Replace end caps, see 1A above.

10 ONLY ON 2019+ RAM MODELS Add Extra Cab Corner Foam Pc.

- A.** If you don't have a drop-in bedliner add extra cab corner foam piece to existing corner piece on both corners by taking the backing off the side with the two sided tape.
- B.** Stick directly on the corner piece already there.

