

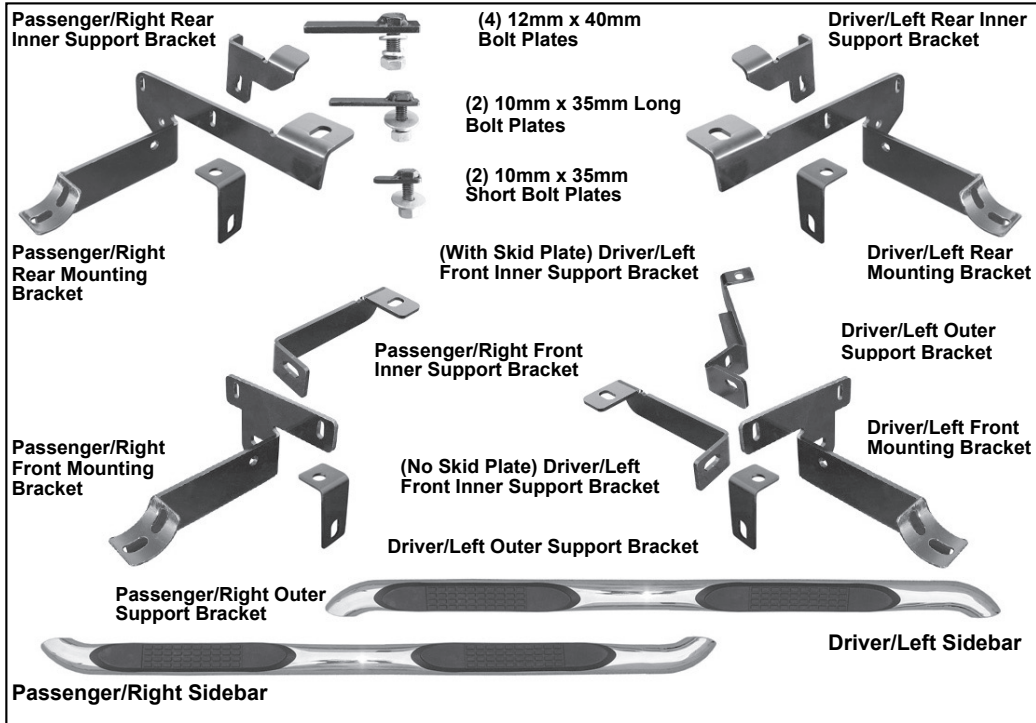


OMIX-ADA, Inc.

460 HORIZON DR. SUITE 100 | SUWANEE, GA 30024 | PHONE: 770-614-6101 | FAX: 770-614-6069 | info@omix-ada.com

Part #11594.04

'11-16 Jeep Grand Cherokee 4" Oval Sidebars



Components

- | | | | |
|---|-----|--|------|
| 1. Driver/Left Sidebar | (1) | 17. 12-1.75mm x 35mm Hex Bolts | (2) |
| 2. Passenger/Right Sidebar | (1) | 18. 12mm x 32mm OD x 3mm Flat Washer | (4) |
| 3. Driver/Left Front Mounting Bracket | (1) | 19. 12mm x 24mm OD x 2.5mm Flat Washer | (4) |
| 4. Passenger/Right Front Mounting Bracket | (1) | 20. 12mm Lock Washer | (6) |
| 5. Driver/Left Front Inner Support Bracket (4WD Vehicles With Skid Plate Only) | (1) | 21. 12mm Hex Nuts | (6) |
| 6. Driver/Left Front Inner Support Bracket (2WD & 4WD Vehicles W/O Skid Plate Only) | (1) | 22. 10-1.5mm x 40mm Hex Bolt | (1) |
| 7. Passenger/Right Inner Support Bracket | (1) | 23. 10-1.5mm x 35mm Hex Bolts | (2) |
| 8. Driver/Left Outer Support Brackets | (2) | 24. 10-1.5mm x 30mm Hex Bolts | (6) |
| 9. Passenger/Right Outer Support Brackets | (2) | 25. 10mm x 30mm x 2.5mm Flat Washers | (18) |
| 10. Driver/Left Rear Mounting Bracket | (1) | 26. 10mm Lock Washers | (8) |
| 11. Passenger/Right Rear Mounting Bracket | (1) | 27. 10mm Hex Nuts | (8) |
| 12. Driver/Left Rear Inner Support Bracket | (1) | 28. 10mm Nylon Lock Nuts | (3) |
| 13. Passenger/Rt. Rear Inner Support Bracket | (1) | 29. 8-1.25mm x 25mm Hex Bolts | (8) |
| 14. 12-1.75mm x 40mm Bolt Plates | (4) | 30. 8mm x 24mm OD x 2mm Flat Washers | (8) |
| 15. 10-1.5mm x 35mm Long Bolt Plates | (2) | 31. 8mm Lock Washers | (8) |
| 16. 10-1.5mm x 35mm Short Bolt Plates | (2) | 32. 6-1.0mm x 25mm Hex Bolts | (8) |
| | | 33. 6mm x 18mm OD x 1.6mm Flat Washers | (16) |
| | | 34. 6mm Nylon Lock Nuts | (8) |

OMIX-ADA® TECHNICAL SUPPORT

PHONE: M-F 8am - 5pm EST 1-800-449-6649 | EMAIL: techsupport@omix-ada.com

FOR WARRANTY INFORMATION VISIT: www.Omix-Ada.com



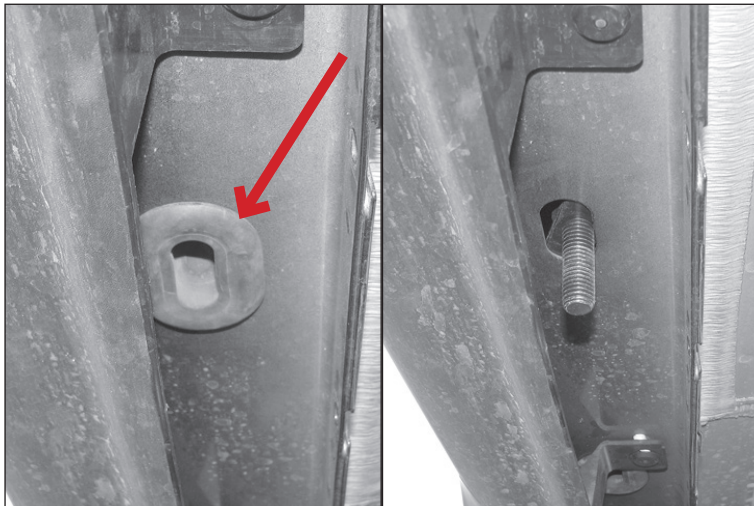
OMIX-ADA, Inc.

460 HORIZON DR. SUITE 100 | SUWANEE, GA 30024 | PHONE: 770-614-6101 | FAX: 770-614-6069 | info@omix-ada.com

'11-16 Jeep Grand Cherokee 4" Oval Sidebars

Remove contents from box. Verify all parts are present. Read instructions carefully before starting installation. Assistance is highly recommended.

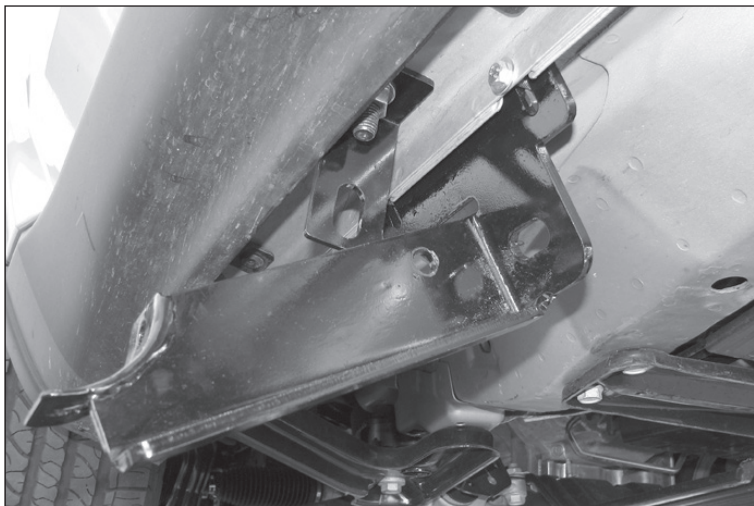
1. Remove rubber plug filling oval hole in bottom of rocker panel.
2. Insert 12mm x 40mm Bolt Plate into hole and rotate 90-degrees to slot. Repeat for all Bolt Plates.



3. Secure Outer Support Bracket to Bolt Plate with 12mm Lock Washer, 12mm x 24mm Small Flat Washer, and 12mm Hex Nut. Do not fully tighten.



4. Next, select the Driver Side Front Mounting Bracket. Bolt Front Mounting Bracket to back of pinch weld with 6mm x 25mm Hex Bolts, 6mm Flat Washers, and 6mm Nylon Lock Nuts. Do not fully tighten.





OMIX-ADA, Inc.

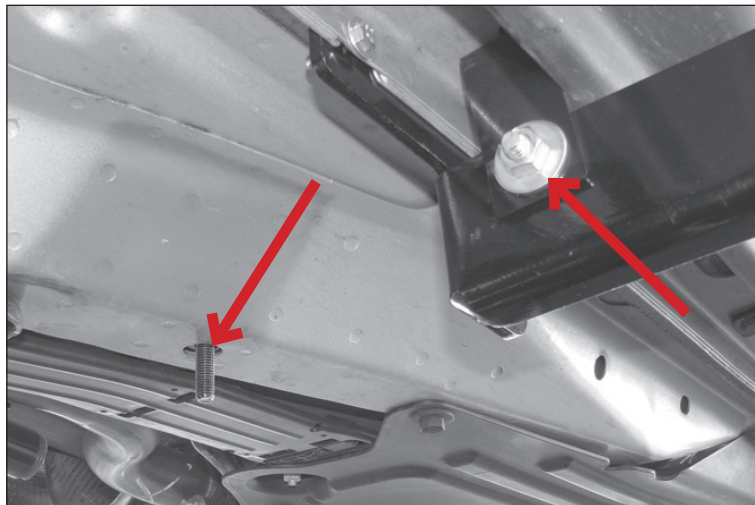
460 HORIZON DR. SUITE 100 | SUWANEE, GA 30024 | PHONE: 770-614-6101 | FAX: 770-614-6069 | info@omix-ada.com

'11-16 Jeep Grand Cherokee 4" Oval Sidebars

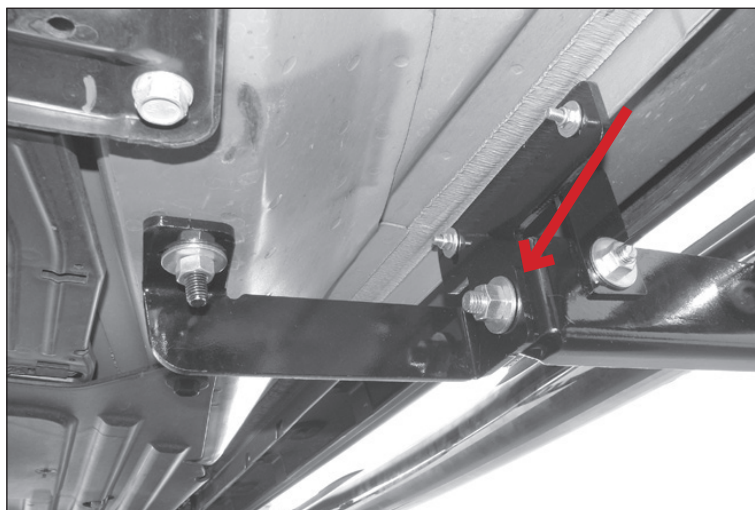
For 2wd vehicles or 4WD without optional factory transfer case skid plate:

5. Insert 10mm x 35mm Short Bolt Plate into oval hole in bottom of frame channel and rotate 90-degrees.

6. Select the Driver Side Front Inner Support Bracket. Bolt the Front Inner Support Bracket to previously installed Bolt Plate with 10mm Flat Washer, 10mm Lock Washer, and 10mm Hex Nut.



7. Line up remaining hole in Support Bracket with hole in center of Front Mounting Bracket. Bolt Brackets together with 12mm x 35mm Hex Bolt, 12mm x 32mm OD Large Flat Washers, 12mm Lock Washer, and 12mm Hex Nut.



8. Line up hole in Outer Support Bracket with hole in Front Mounting Bracket.

NOTICE The Outer Support Bracket will line up on forward facing side of Mounting Bracket.

9. Bolt Brackets together with 10mm x 30mm Hex Bolt, 10mm Flat Washers, and 10mm Nylon Lock Nut. Do not fully tighten.





OMIX-ADA, Inc.

460 HORIZON DR. SUITE 100 | SUWANEE, GA 30024 | PHONE: 770-614-6101 | FAX: 770-614-6069 | info@omix-ada.com

'11-16 Jeep Grand Cherokee 4" Oval Sidebars

For 4WD vehicles with optional transfer case skid plate (the following applies to front driver side Inner Support Bracket installation only. Use above steps for passenger side front Inner Support Bracket installation):

10. Remove factory hex bolt securing rear of skid plate to bottom of frame channel.

11. Place Front Inner Support Bracket (for models w/ Factory Skid Plate) over skid plate and secure with 10mm x 40mm Hex Bolt, 10mm Flat Washer, and 10mm Lock Washer. Do not fully tighten.

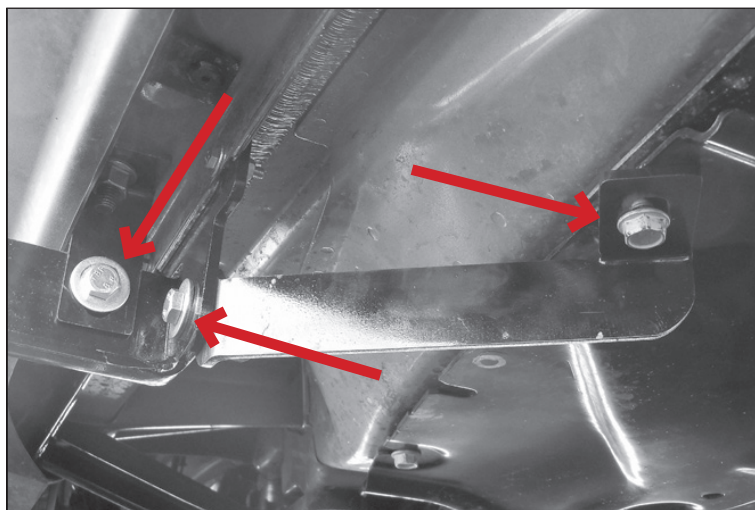


12. Line up holes in outer end of Support Bracket with holes in Front Mounting Bracket. Line up hole in Outer Support Bracket with hole in Mounting Bracket and Support Bracket.

NOTICE Outer Support Bracket will line up on rear facing side of Mounting Bracket

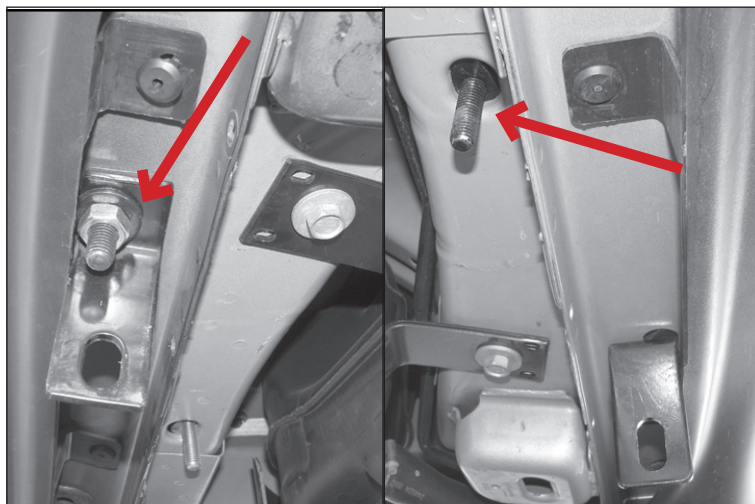
13. Bolt Brackets together with 10mm x 35mm Hex Bolts, 10mm Flat Washers, and 10mm Nylon Lock Nuts. Do not fully tighten.

NOTICE Use Steps 5-9 for Passenger Side Inner Support Bracket for all vehicles.



14. Remove rubber plug, as in Step 2, in bottom of rocker panel in rear of vehicle. Insert 12mm Bolt Plate into oval hole and rotate 90-degrees to slot. Secure Outer Support Bracket to Bolt Plate with 12mm Lock Washer, 12mm x 20mm Small Flat Washer, and 12mm Hex Nut.

15. On other side of pinch weld, forward of this location, insert 10mm Large Bolt Plate into oval hole and rotate 90-degrees to oval hole.





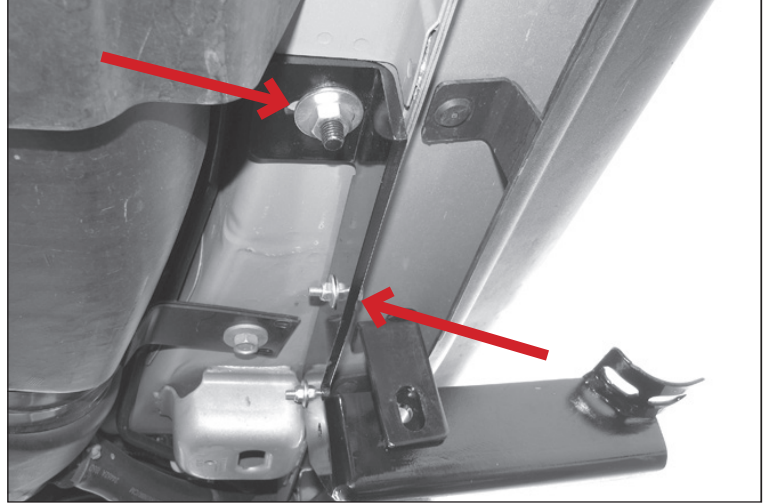
OMIX-ADA, Inc.

460 HORIZON DR. SUITE 100 | SUWANEE, GA 30024 | PHONE: 770-614-6101 | FAX: 770-614-6069 | info@omix-ada.com

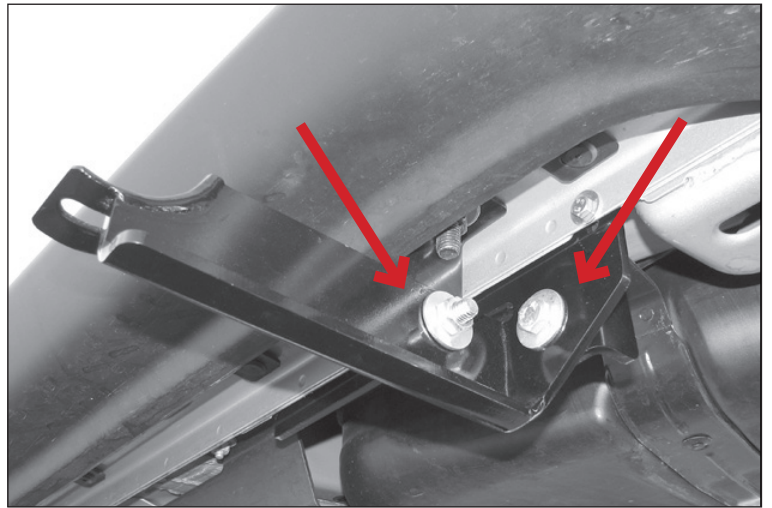
'11-16 Jeep Grand Cherokee 4" Oval Sidebars

16. Bolt Rear Mounting Bracket to back of pinch weld with 6mm x 25mm Hex Bolts, 6mm Flat Washers, and 6mm Nylon Lock Nuts.

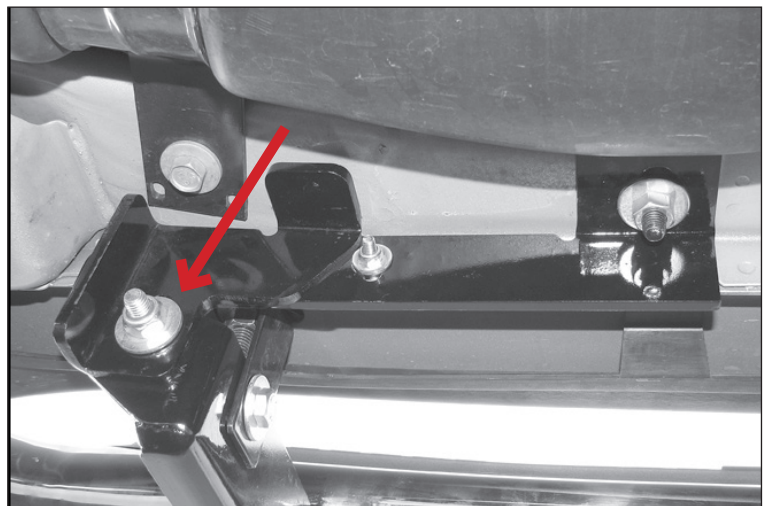
17. Hang Bracket from previously installed forward Bolt Plate with 10mm Flat Washer, 10mm Lock Washer, and 10mm Hex Nut.



18. Line up hole in Outer Support Bracket with hole in Mounting Bracket. Bolt Brackets together with 10mm x 30mm Hex Bolt, 10mm Flat Washers, 10mm Lock Washer, and 10mm Hex Nut.



19. Bolt Rear Inner Support Bracket to back of Mounting Bracket with 10mm x 30mm Hex Bolt, 10mm Flat Washers, and 10mm Nylon Lock Nut. Do not fully tighten.



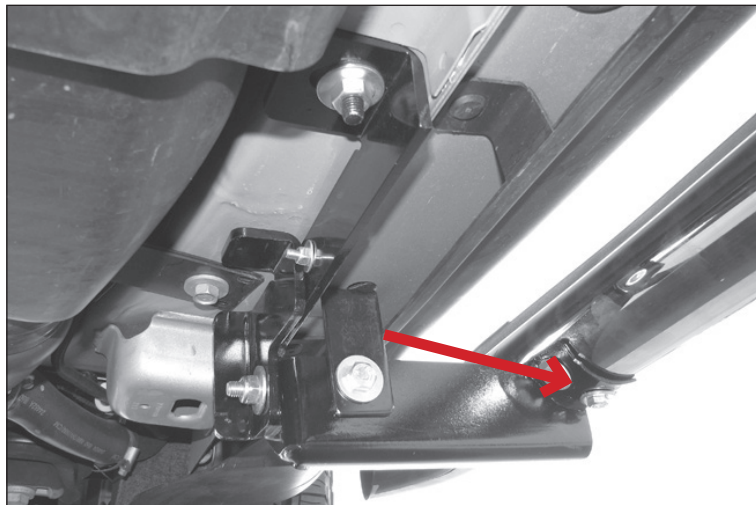


OMIX-ADA, Inc.

460 HORIZON DR. SUITE 100 | SUWANEE, GA 30024 | PHONE: 770-614-6101 | FAX: 770-614-6069 | info@omix-ada.com

'11-16 Jeep Grand Cherokee 4" Oval Sidebars

20. Place Sidebar on Mounting Brackets. Line up threaded holes in Sidebar with slots in Brackets and secure with 8mm x 25mm Hex Bolts, 8mm Lock Washers, and 8mm Flat Washers. Do not fully tighten.

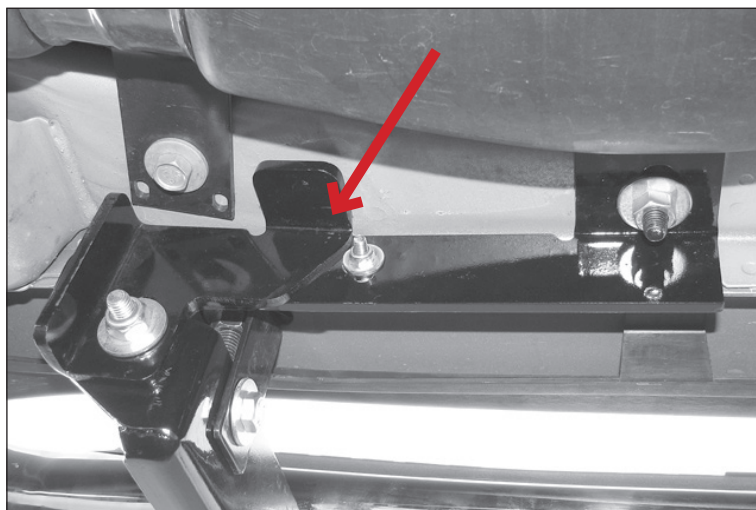


21. Adjust and level Sidebar and tighten all hardware.

NOTICE Firmly press tab on Rear Inner Support Bracket against bottom of body panel as 10mm Hardware is tightened.

22. Repeat steps for second Sidebar.

23. Do periodic inspections to installation to ensure all hardware is secure and tight.



To protect your investment, wax this product after installing. Regular waxing is recommended to add a protective layer over the finish. Do not use any type of polish or wax that may contain abrasives that could damage the finish.

For stainless steel: Aluminum polish may be used to polish small scratches and scuffs on the finish. Mild soap may be used also to clean the Running Boards.

For gloss black finishes: Mild soap may be used to clean Running Boards.