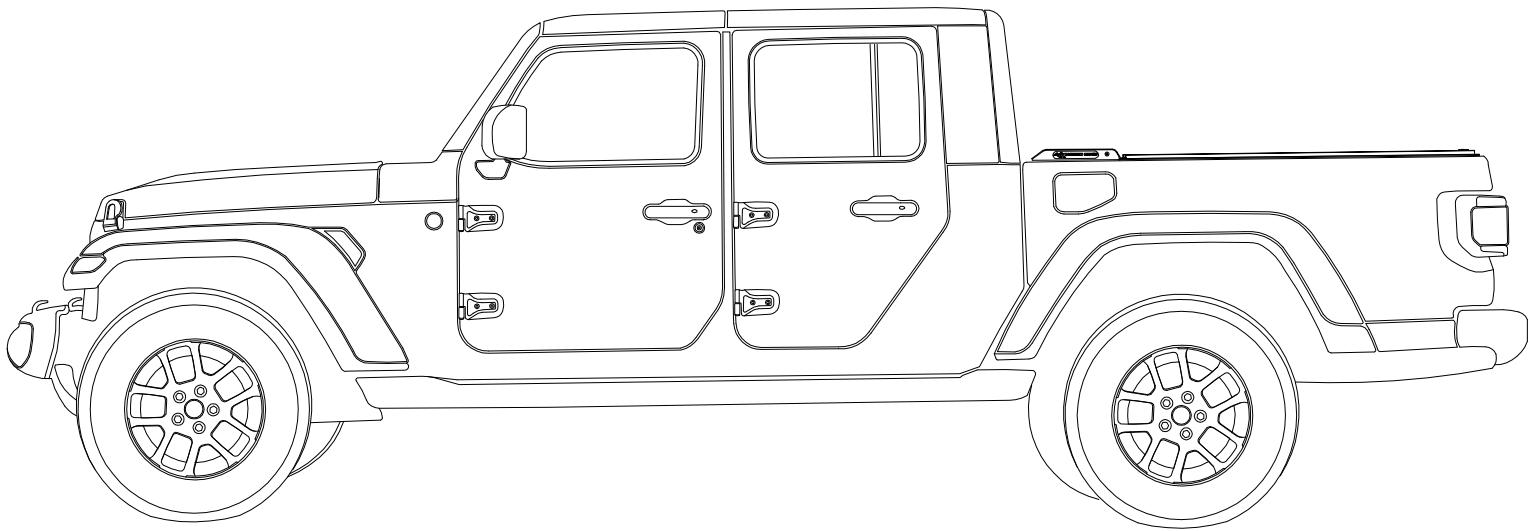




# Installation Guide

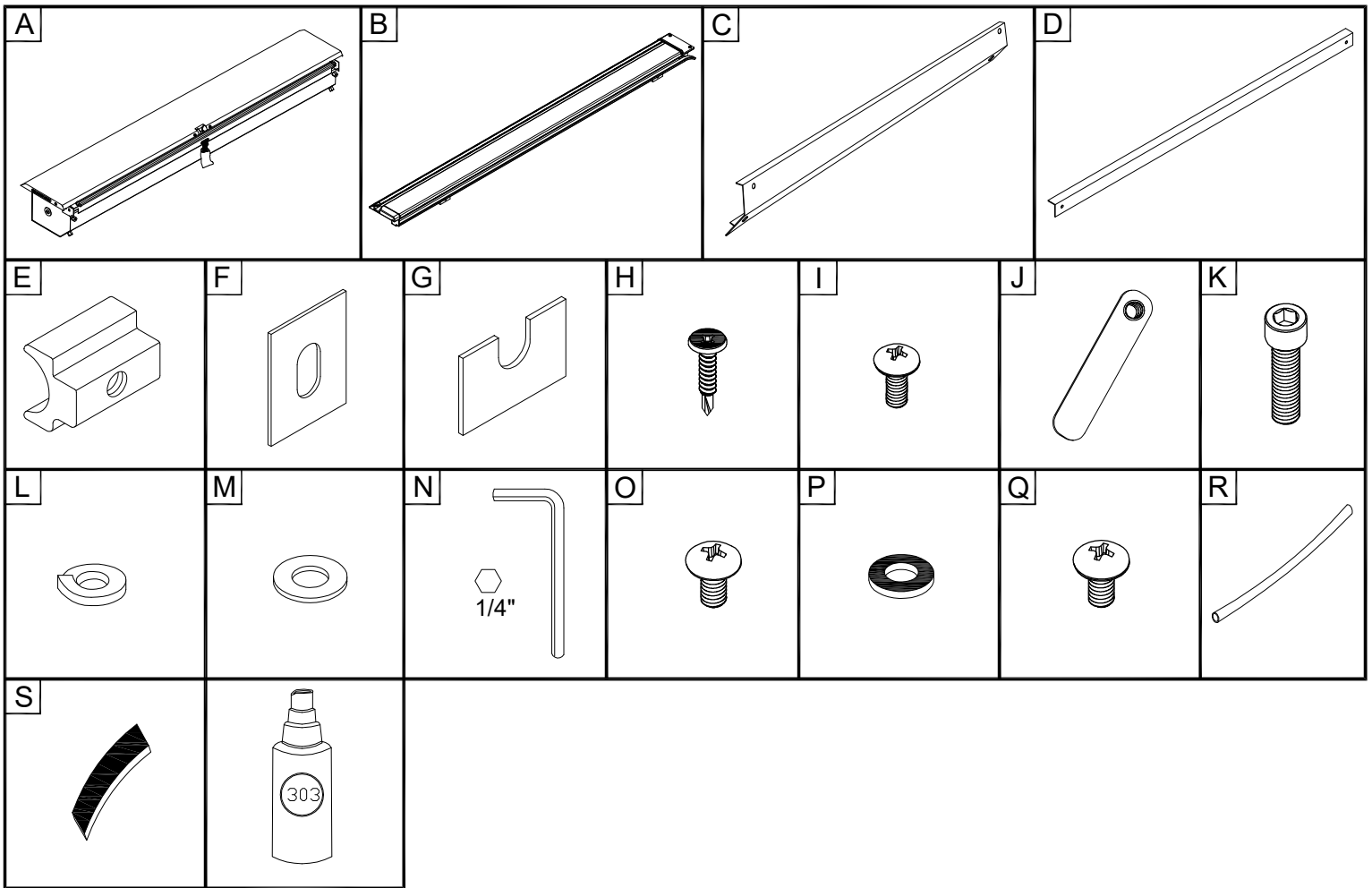
## Jeep Gladiator



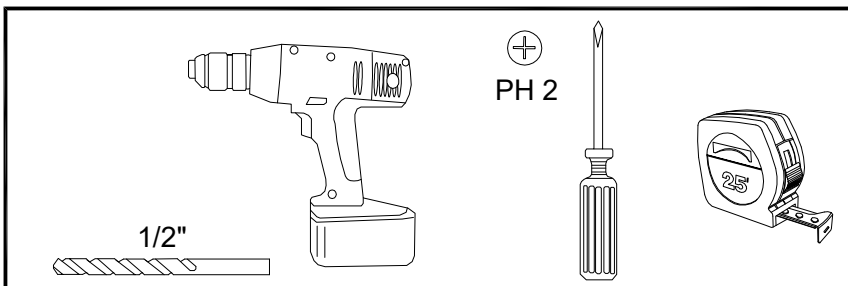
Product Code  
13550.35

## Parts List

Item	Part Name	Qty.	Item	Part Name	Qty.	Item	Part Name	Qty.
A	Housing	1	G	Leveling Shim	2	M	5/16" Flat Washer	4
B	MaxTrak	2	H	#8 x 3/4" Self Tap Screw	2	N	Allen Wrench (1/4")	1
C	Cargo Shield	1	I	#10-24 Screw	2	O	1/4-20 x 3/8" Screw	4
D	Bulkhead Flashing	1	J	Cargo Nut	2	P	Rubber Washer	4
E	Threaded Block	4	K	5/16" Socket Cap Screw	4	Q	1/4" Lid Screws	2
F	Width Adjustment Shim	2	L	5/16" Lock Washer	4	R	Drain Tube	2
						S	Caulk Strips	2
							303 Vinyl Protector	1

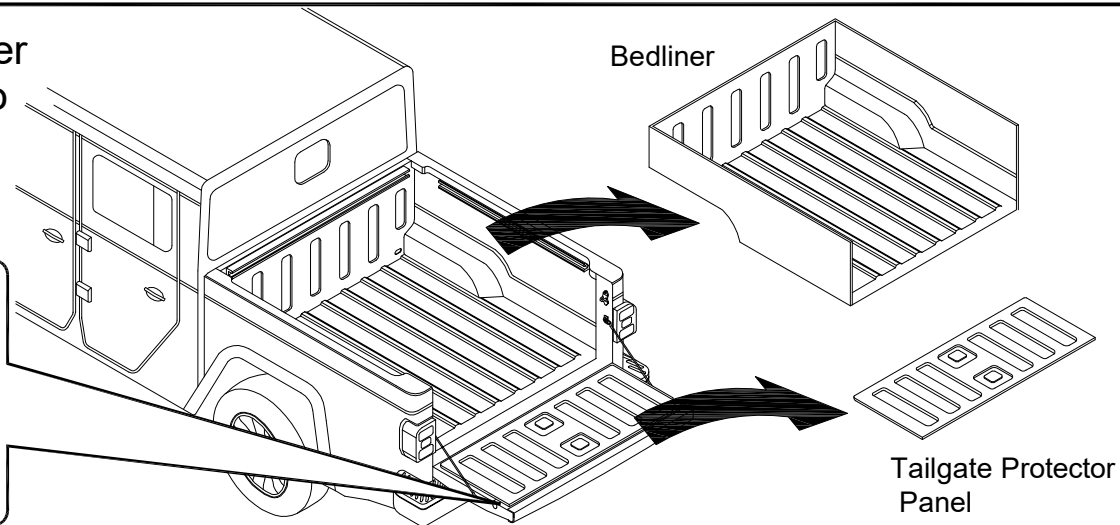
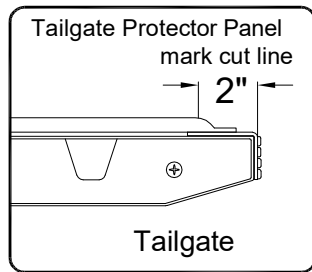


## Tools Needed

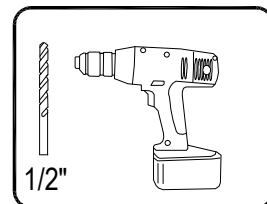
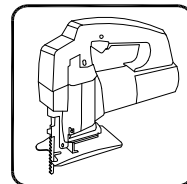
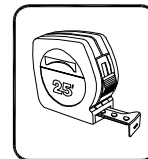
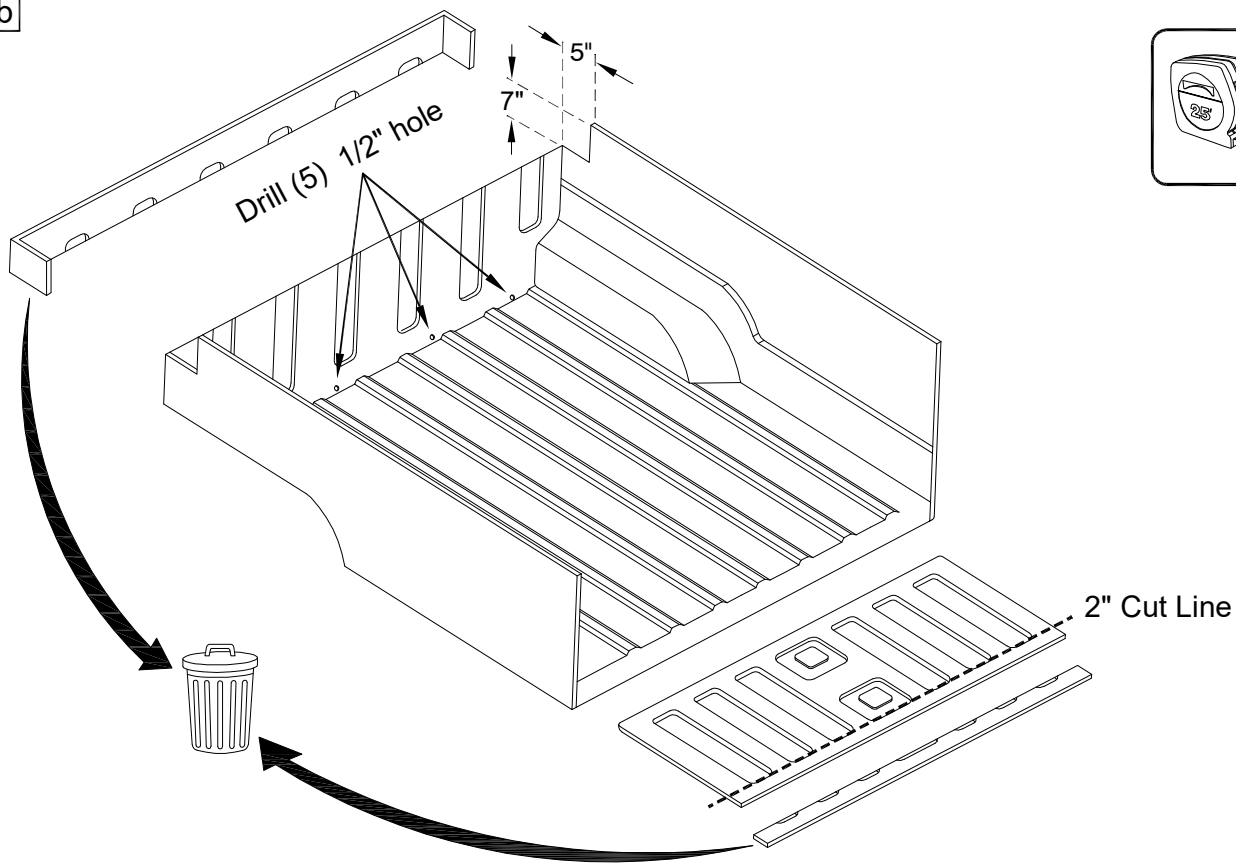


1a

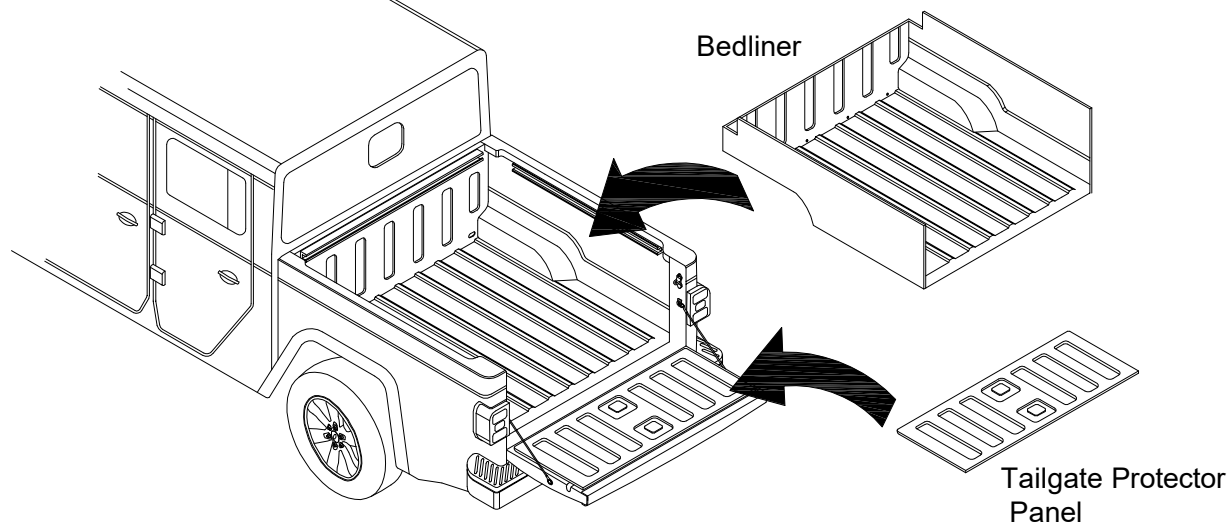
If no plastic bedliner present proceed to page 4

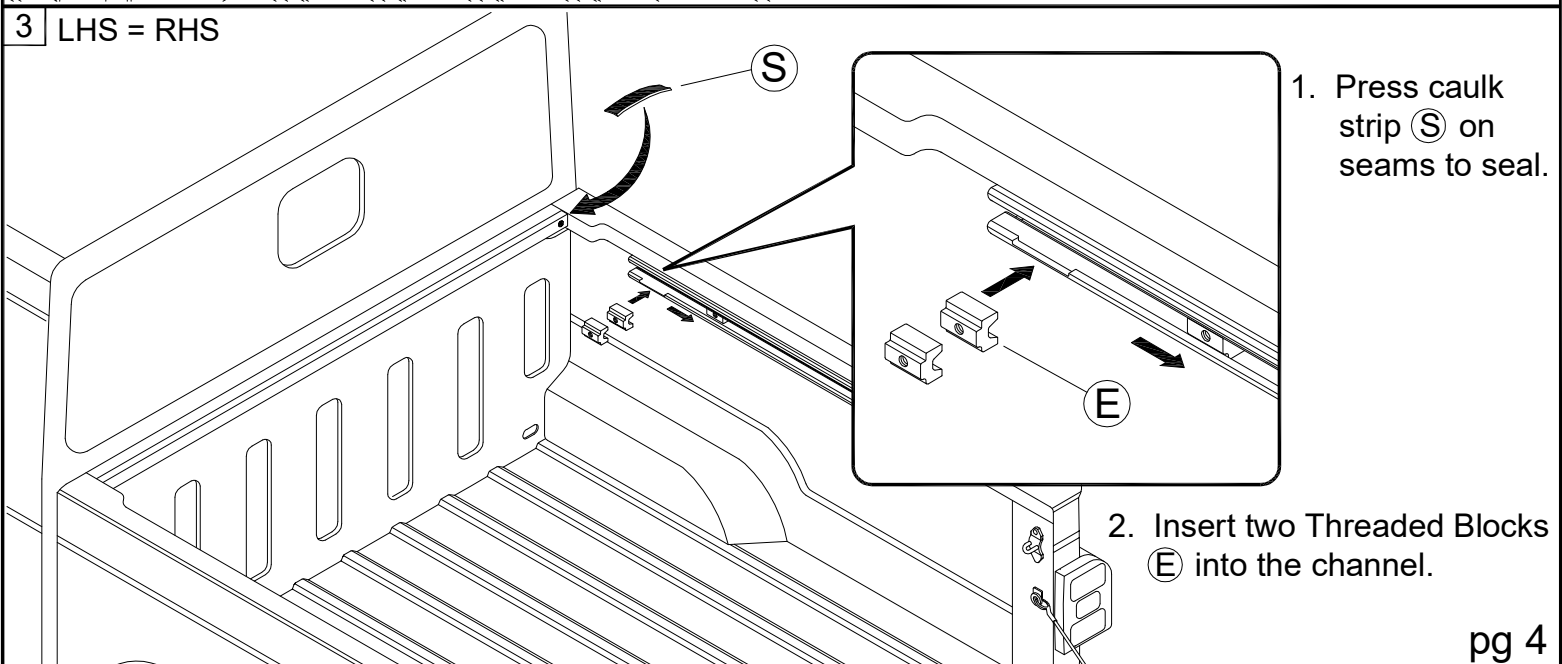
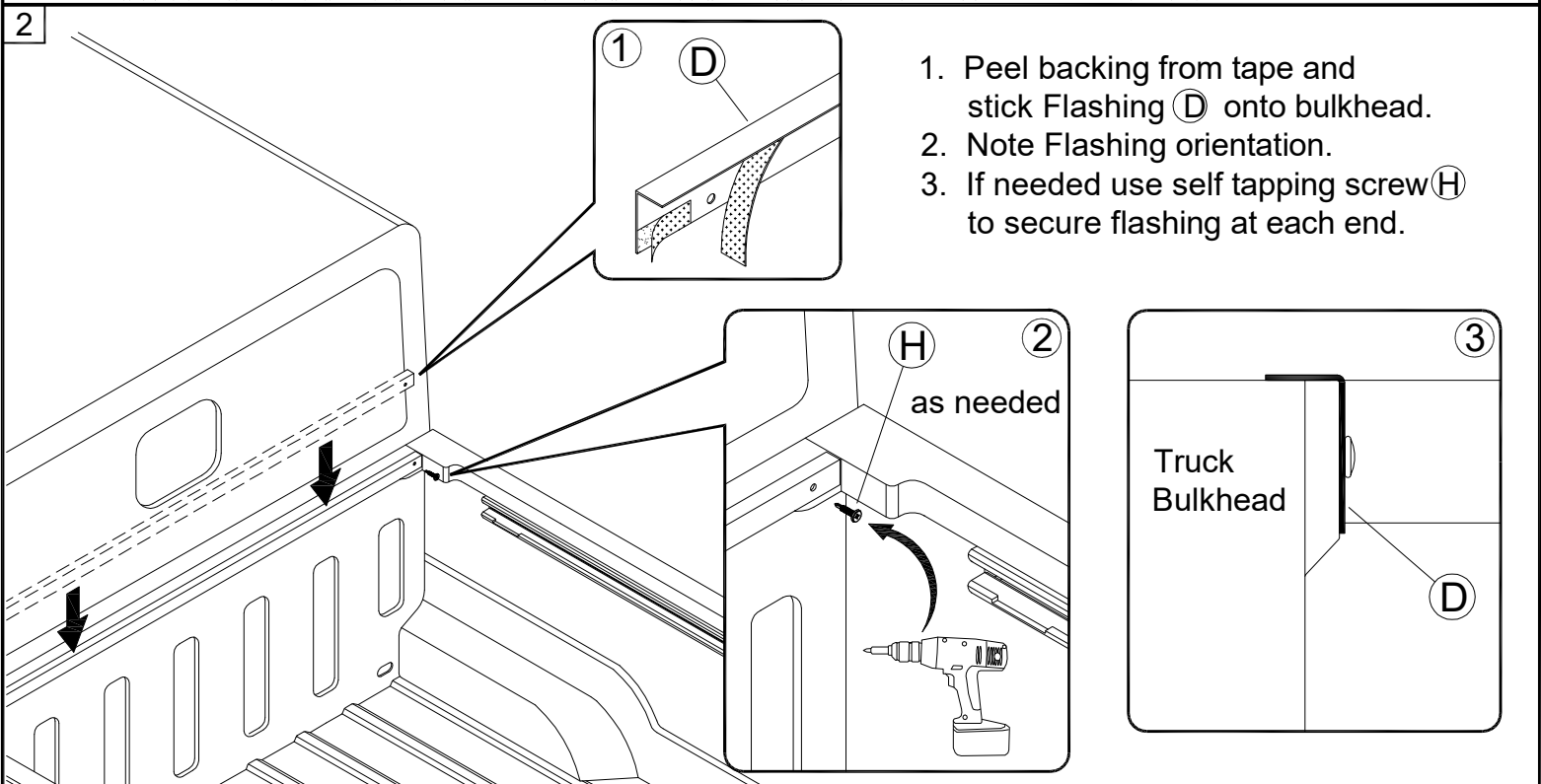
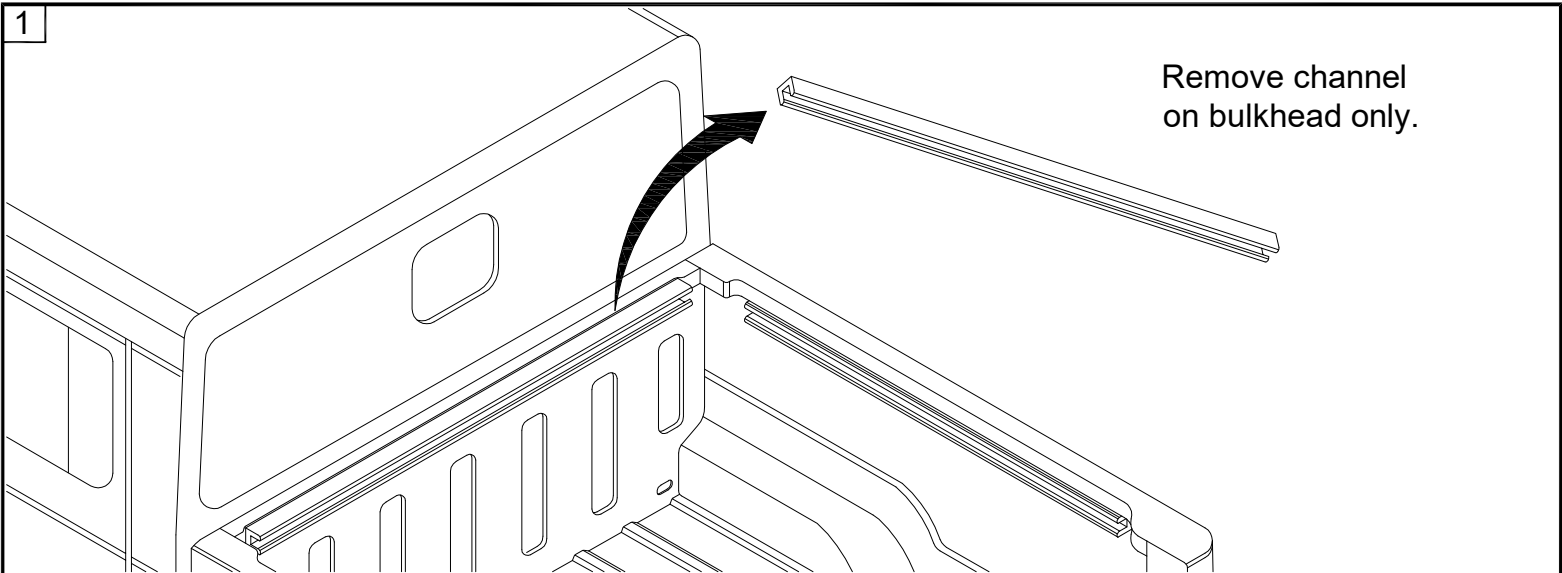


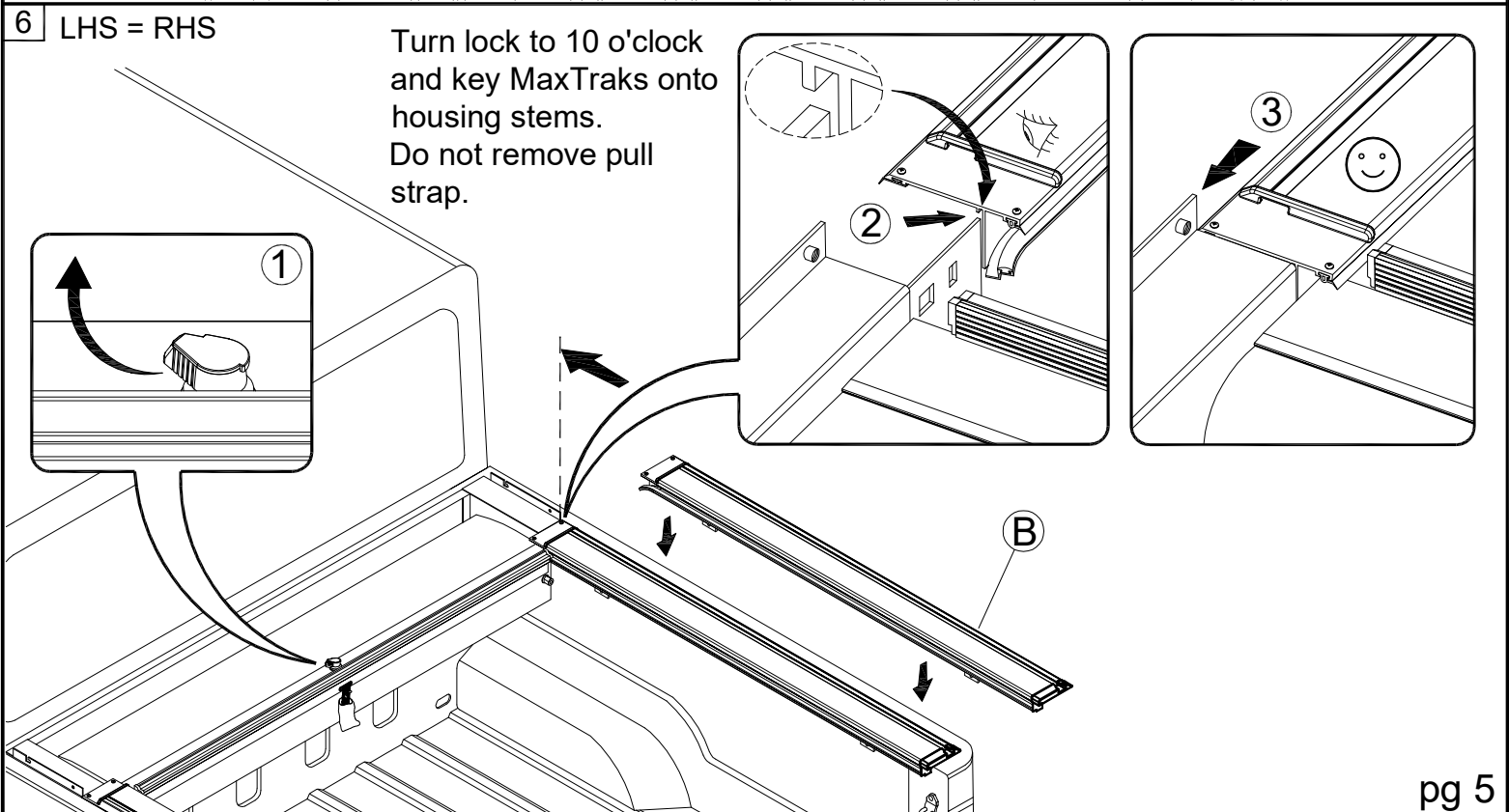
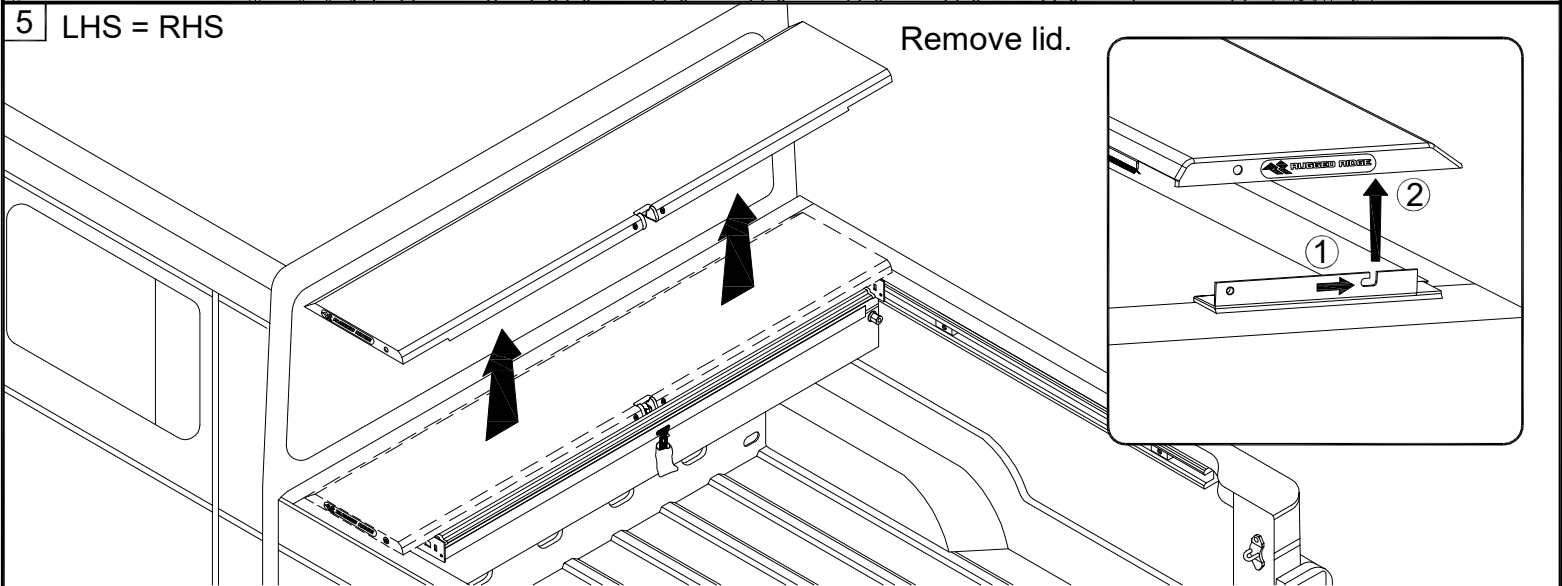
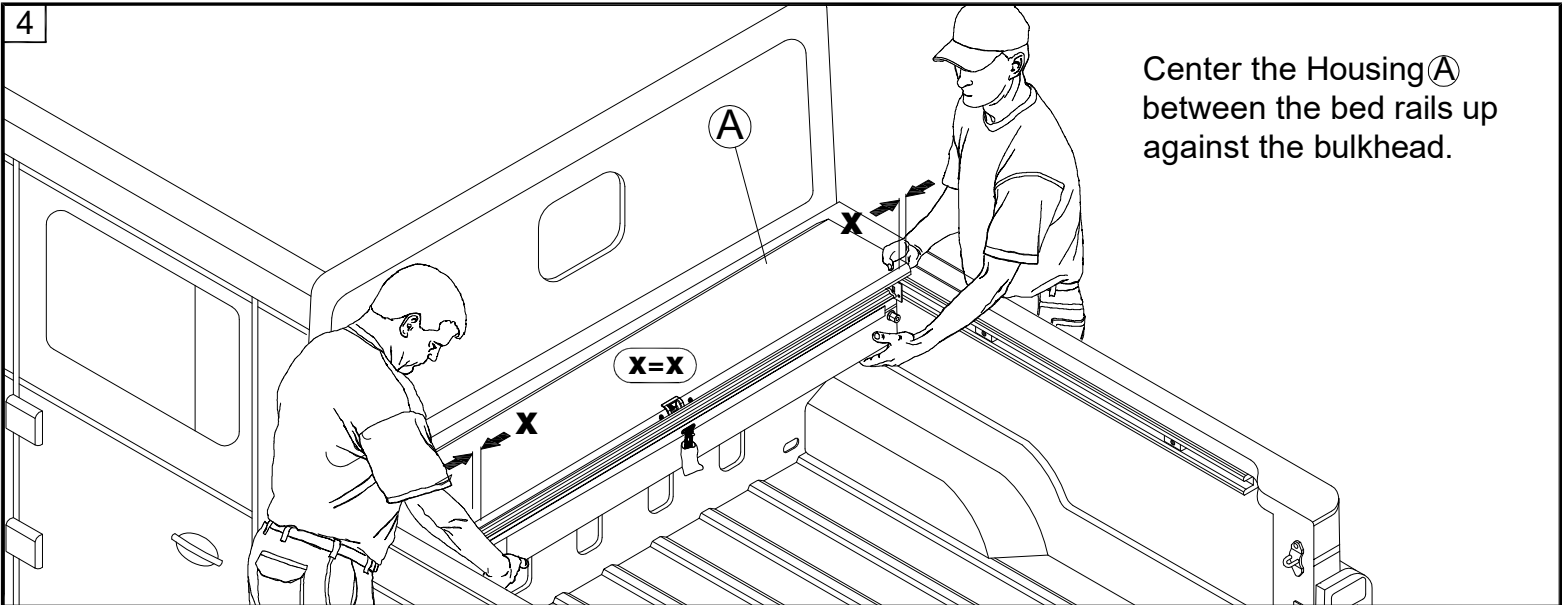
1b



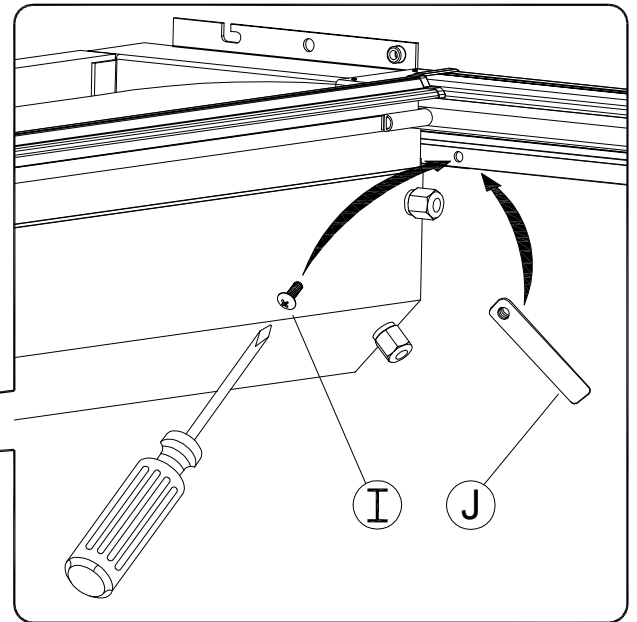
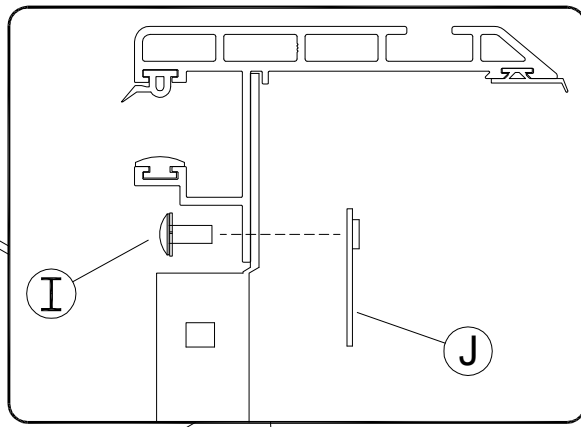
1c





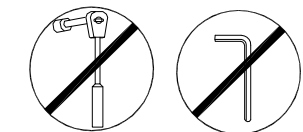
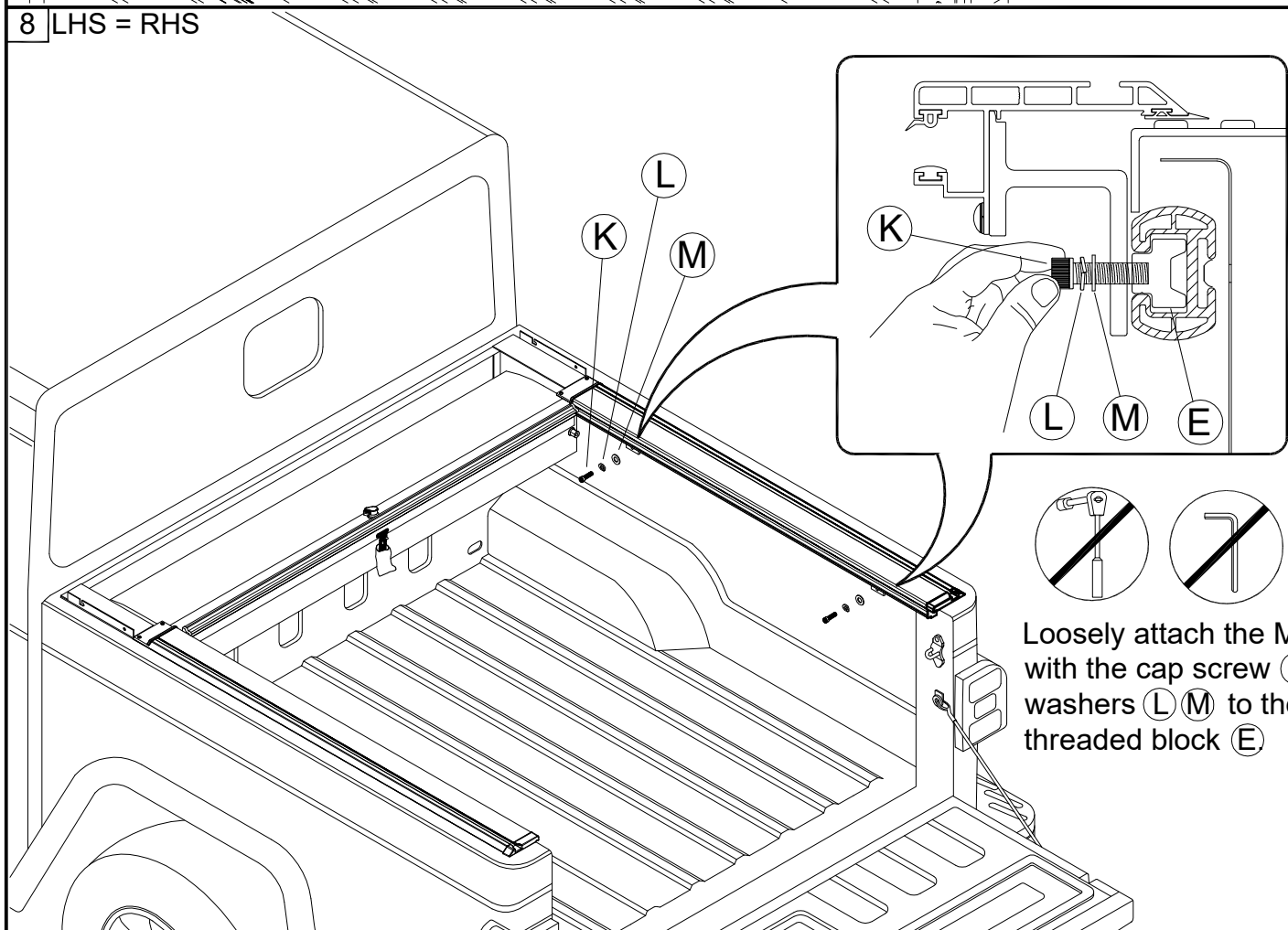


7 LHS = RHS



Secure MaxTraks to housing stems.

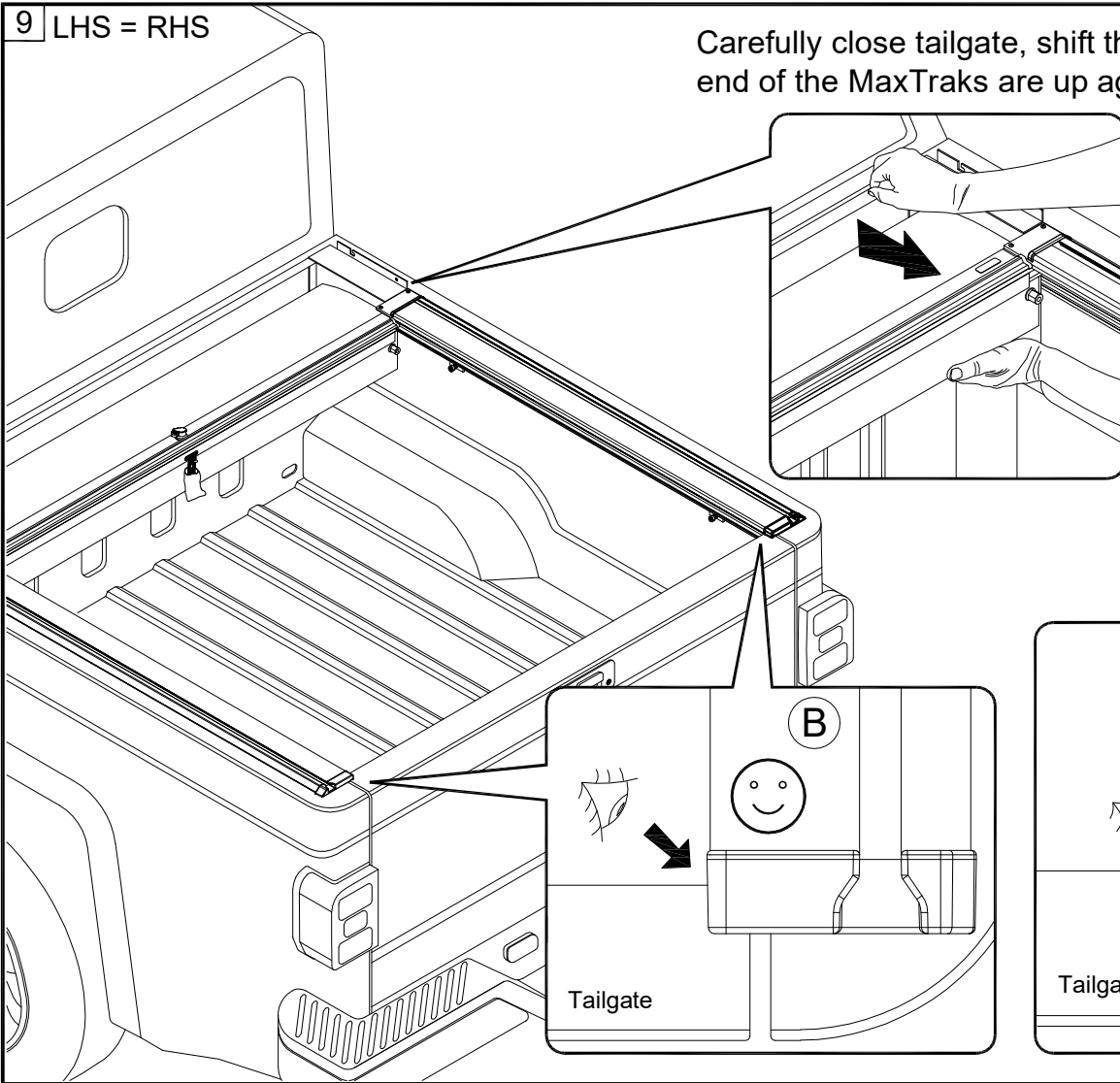
8 LHS = RHS



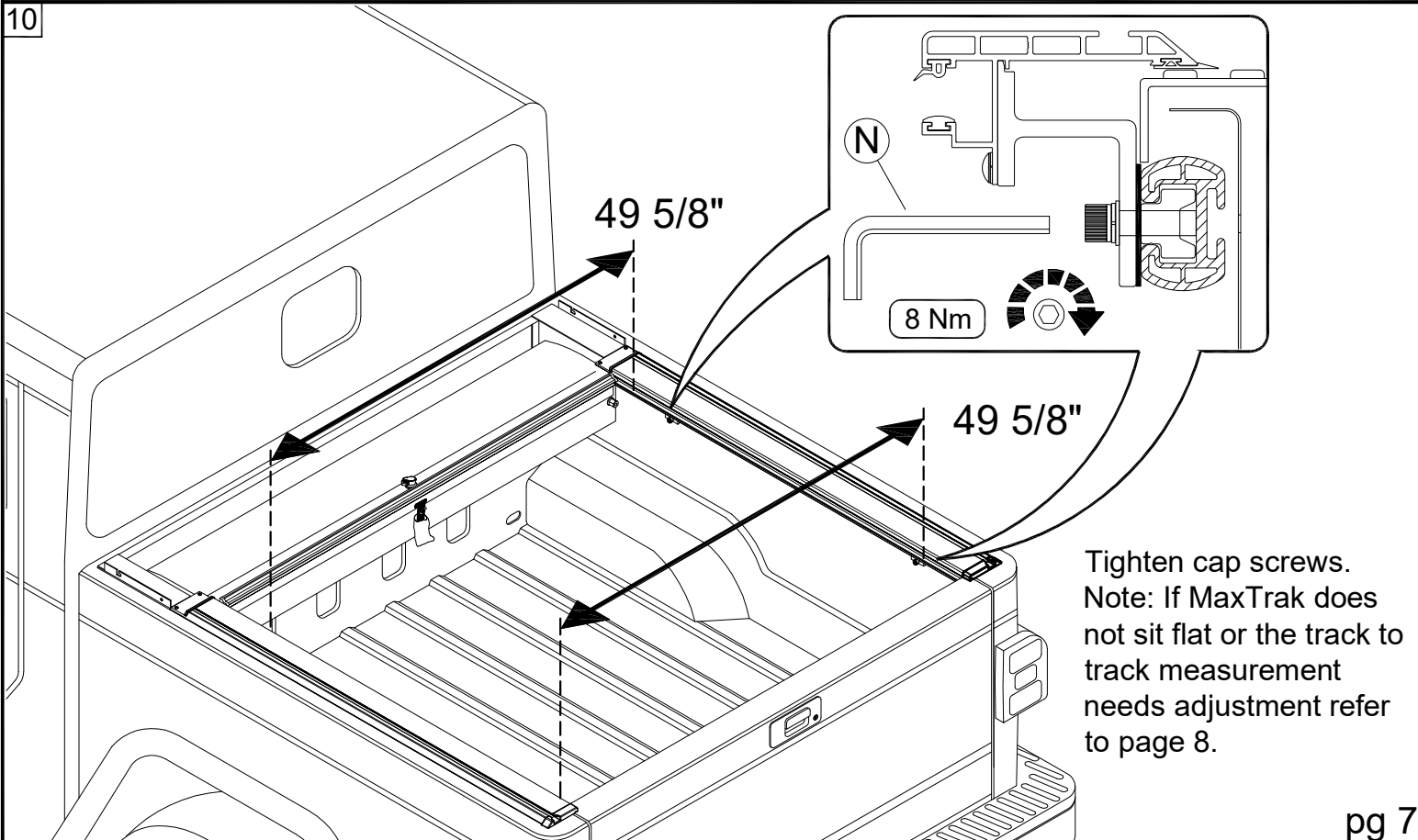
Loosely attach the MaxTraks with the cap screw (K) and washers (L M) to the threaded block (E)

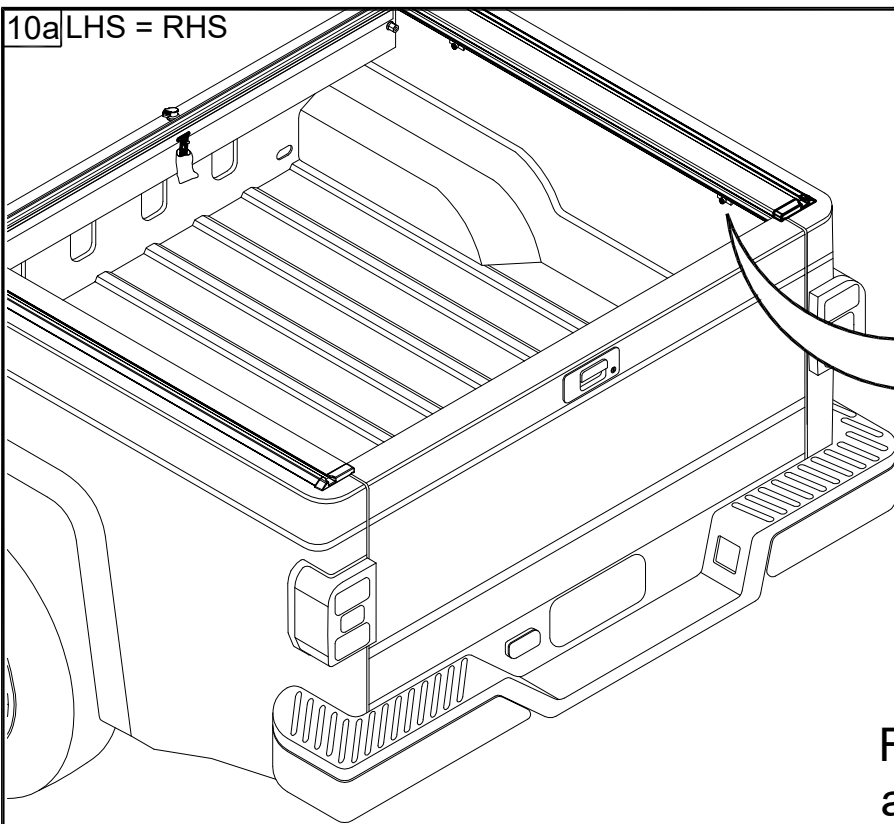
9 LHS = RHS

Carefully close tailgate, shift the housing back so the end of the MaxTraks are up against the tailgate.



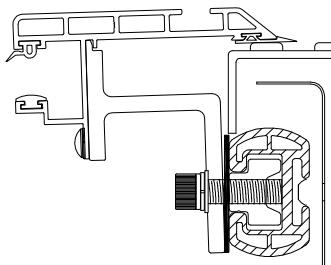
10



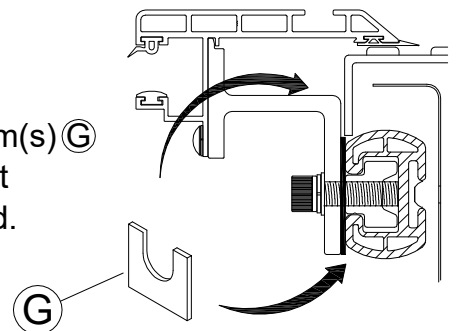


Follow the steps below  
as needed.

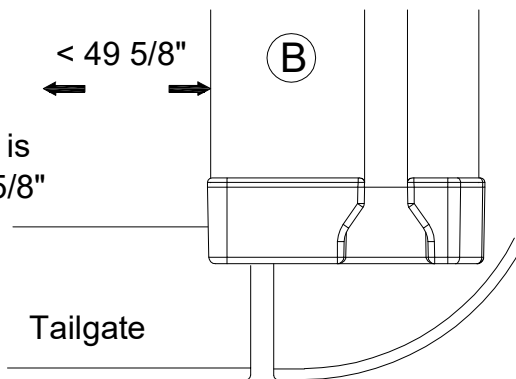
MaxTrak tips up  
or down.



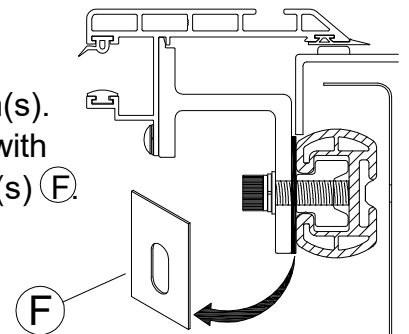
Insert leveling shim(s) ⑦  
behind clamp(s) at  
tailgate as needed.



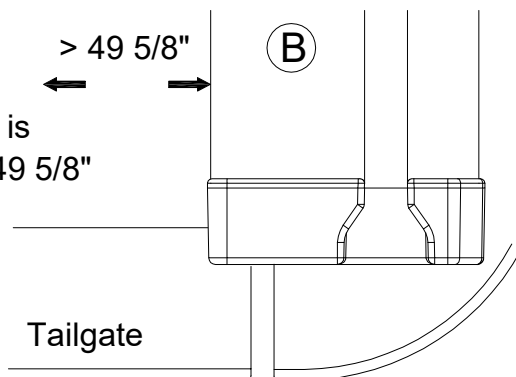
If Track to Track is  
<(less than) 49 5/8"



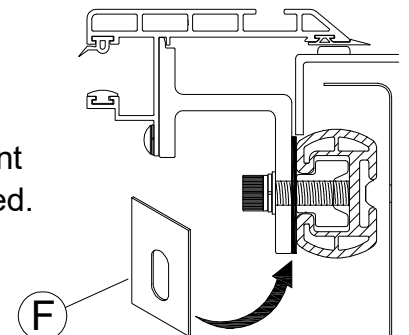
Remove existing shim(s).  
May need to replace with  
thinner supplied shim(s) ⑦.



If Track to Track is  
>(greater than) 49 5/8"

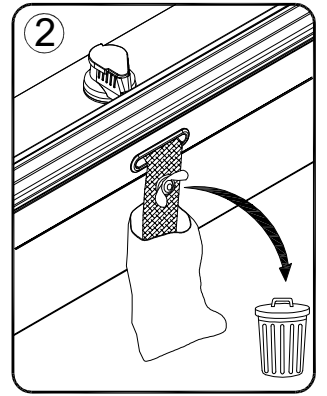
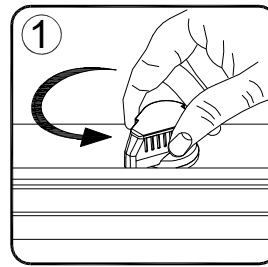
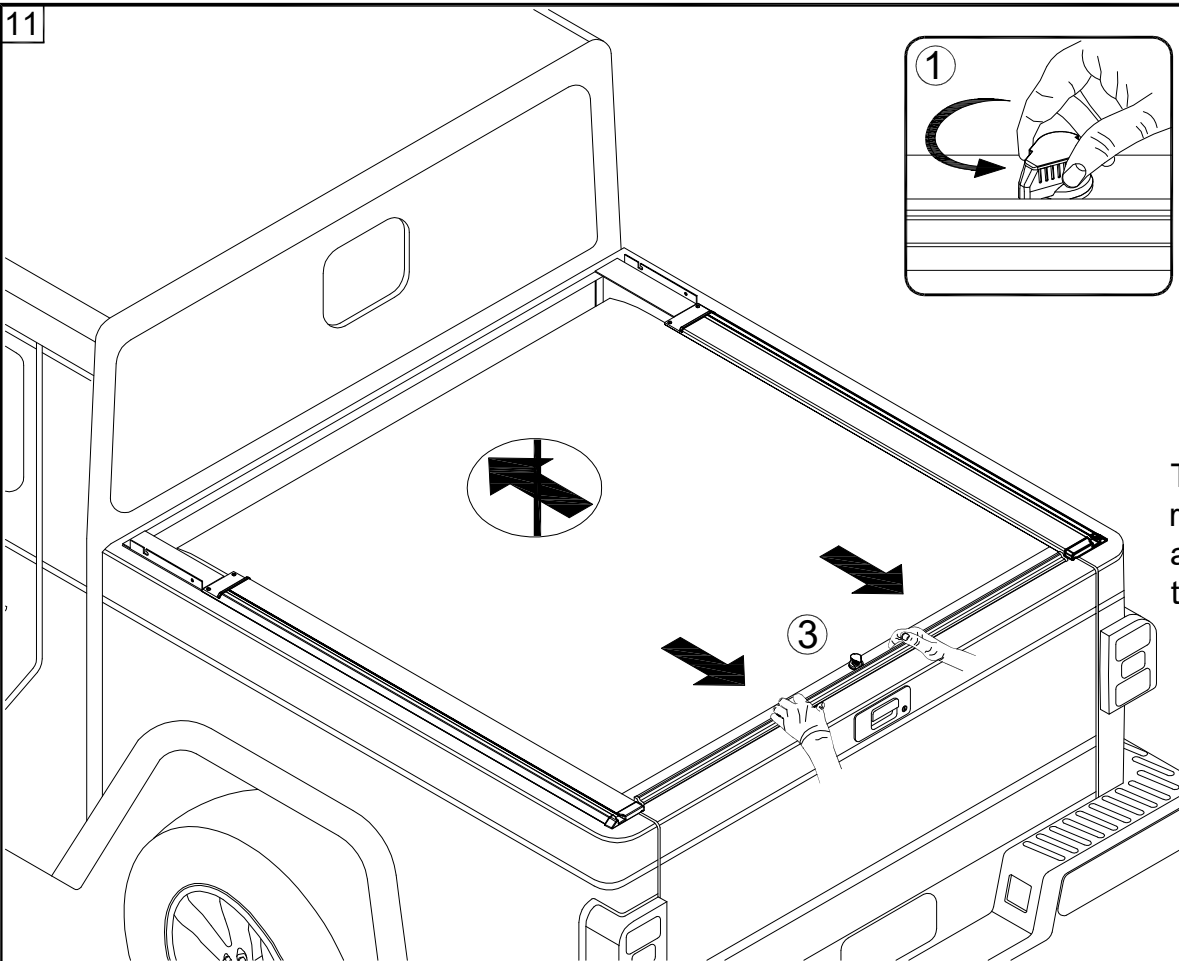


Add width adjustment  
shim(s) ⑦ as needed.



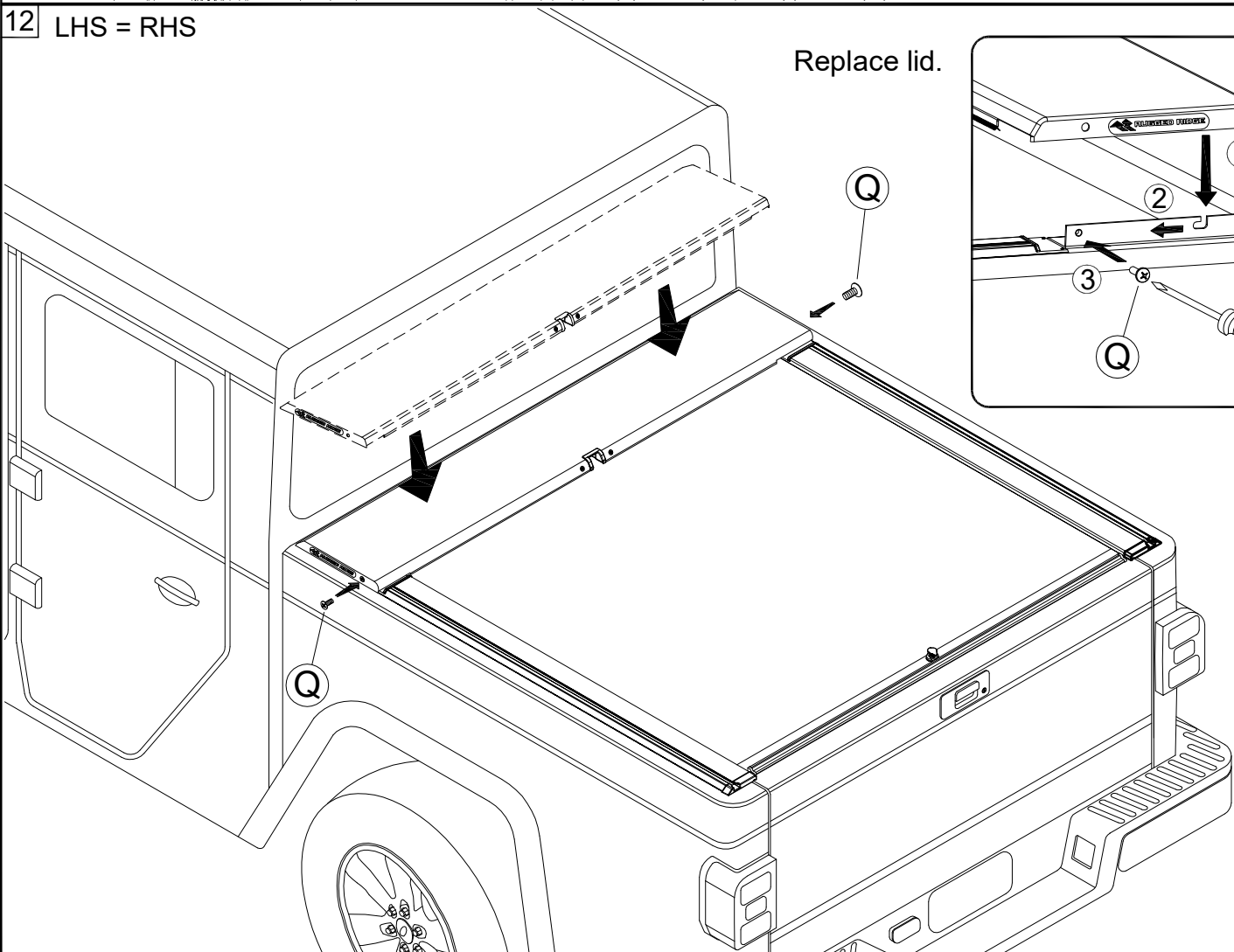


11

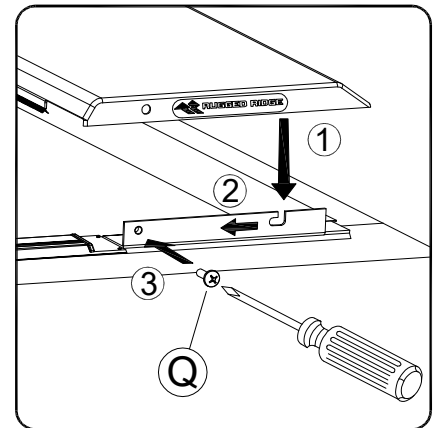


Turn lock to 7 o'clock, remove plastic wing nut and pull cover back to tailgate.

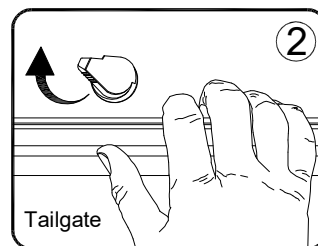
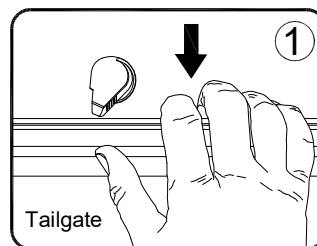
12 LHS = RHS



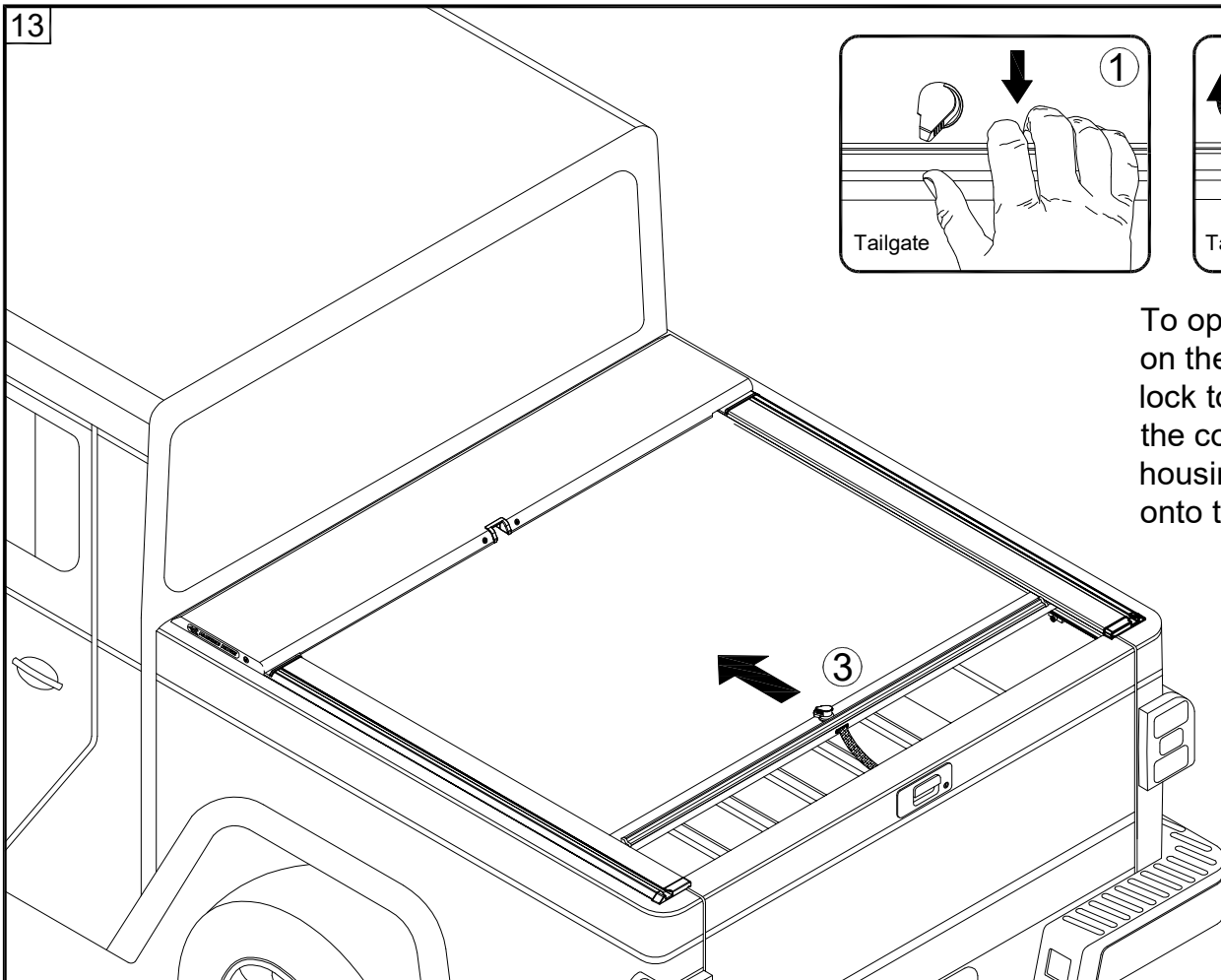
Replace lid.



13

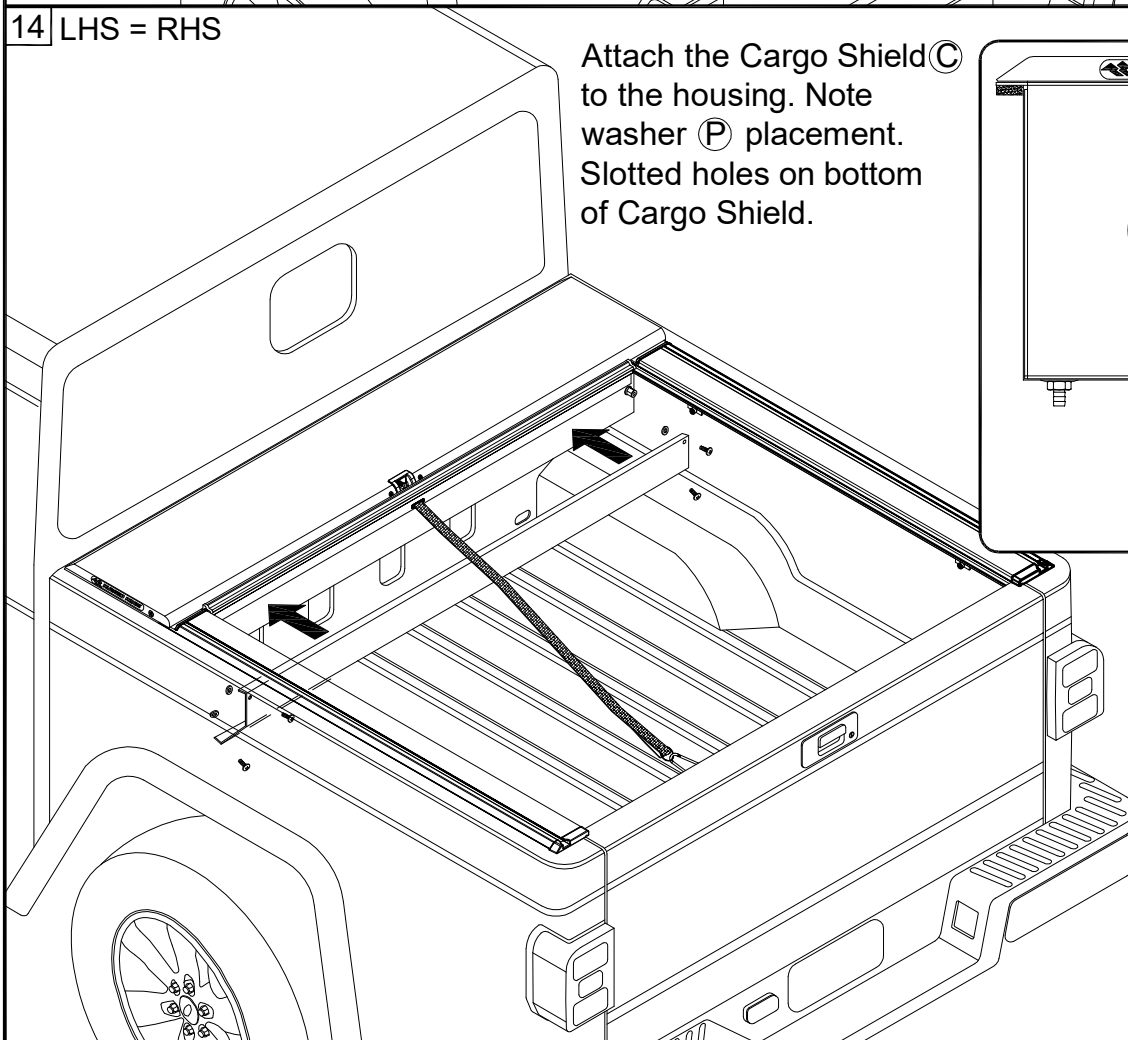
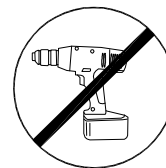
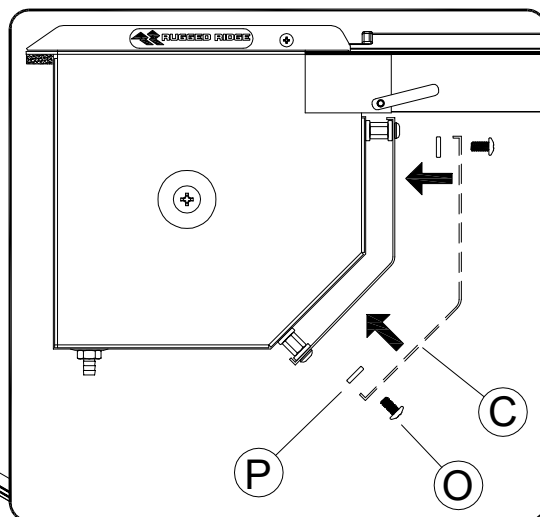


To open cover pull back on the handle, turn the lock to 10 o'clock and let the cover retract into the housing while holding onto the pull-strap.



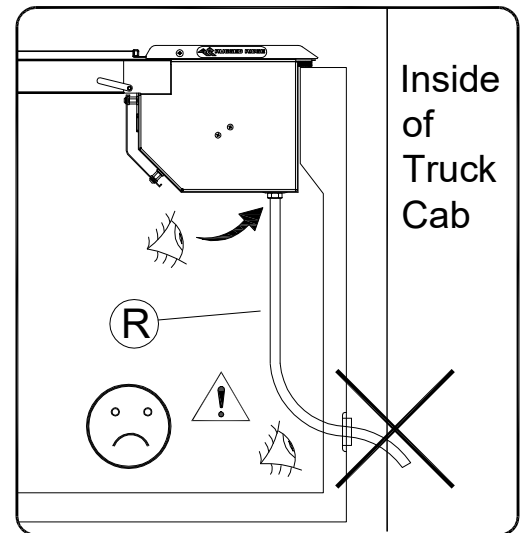
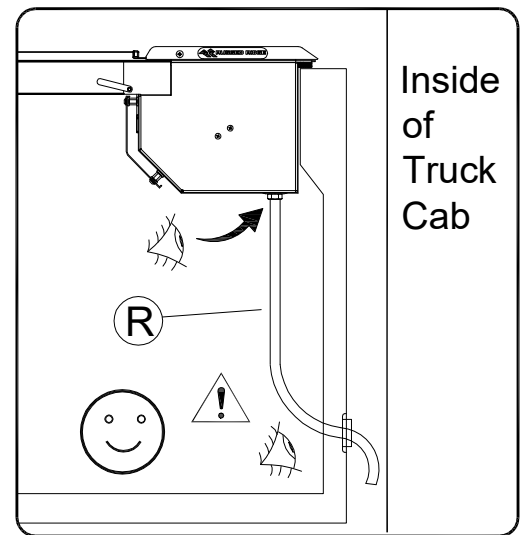
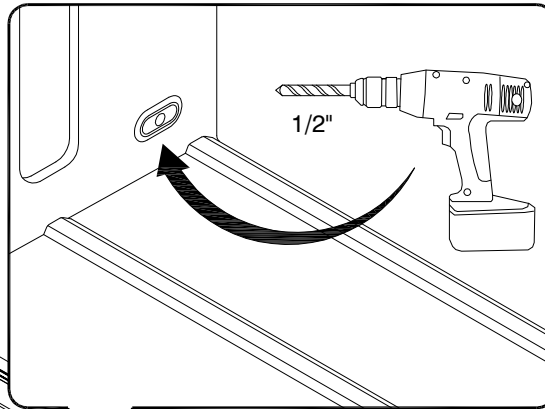
14 LHS = RHS

Attach the Cargo Shield **C** to the housing. Note washer **P** placement. Slotted holes on bottom of Cargo Shield.



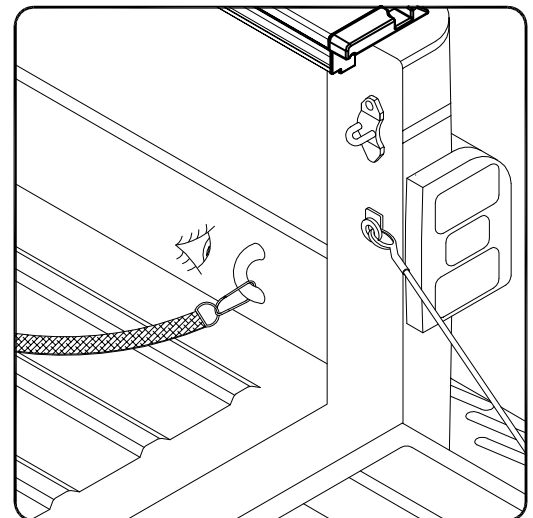
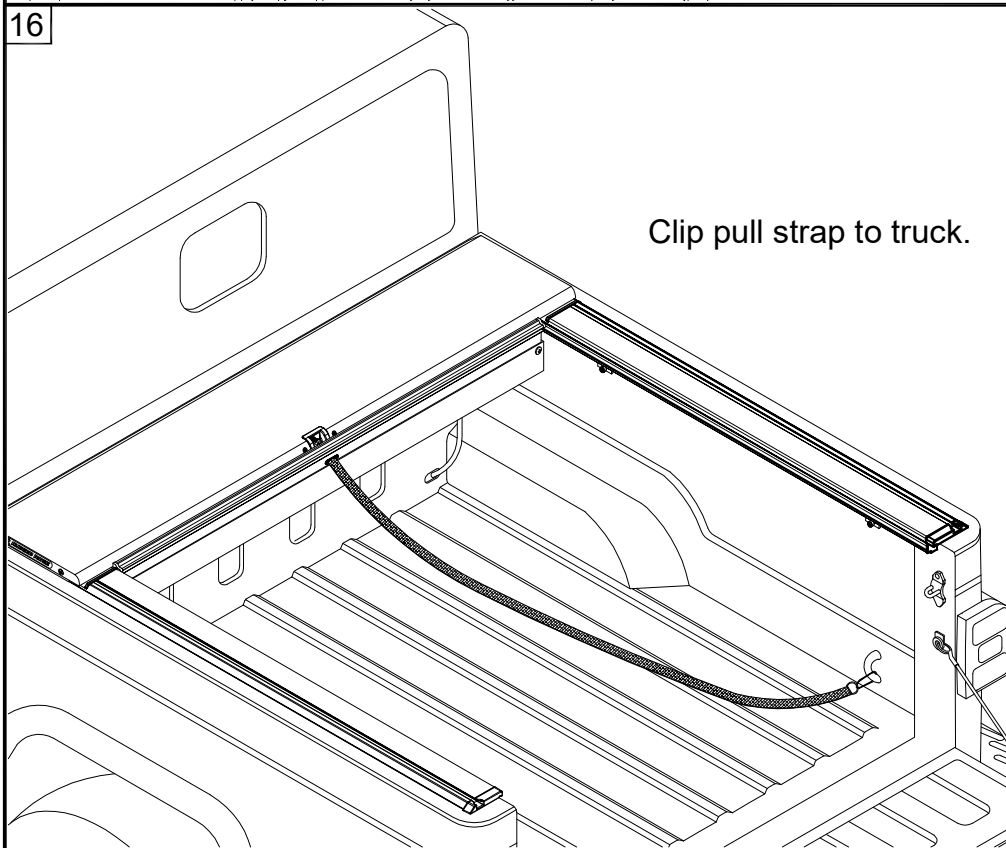
15 LHS = RHS

Drill 1/2" hole and insert one end of the Drain Tube® through and insert the other end onto the drain stem.



16

Clip pull strap to truck.

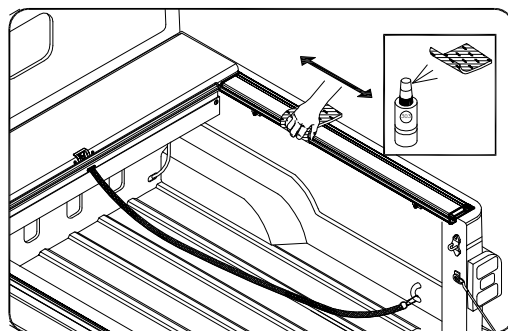


# Troubleshooting

Cover is hard to pull or retract.



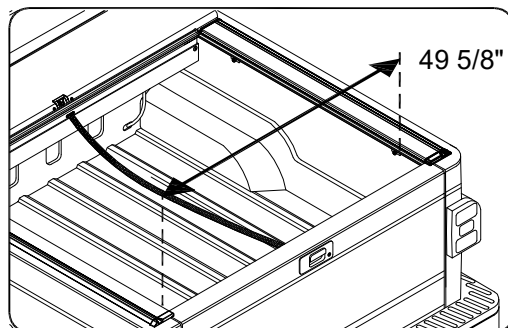
Spray 303<sup>®</sup> on a rag and wipe the top gasket in the Track back and forth.



Cover does not latch.



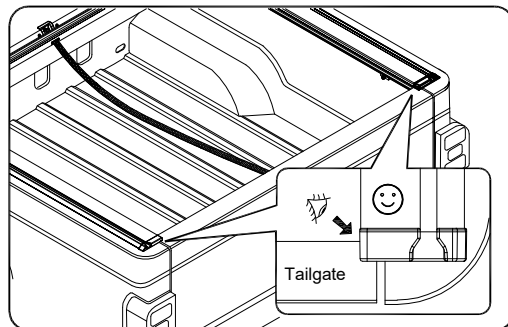
Check track to track measurement.



Cover does reach tailgate.



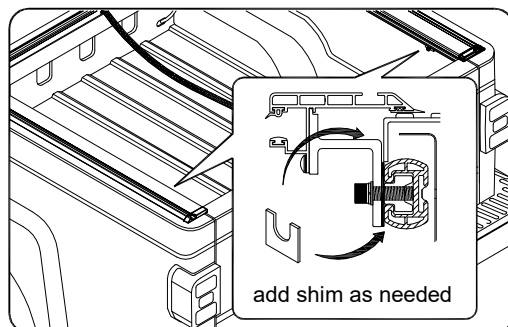
Make sure Tracks are back against tailgate.



Track tips up or down.



Add shim as needed.



Any questions please call Customer Service at 770-614-6101  
or visit [www.omixsupport.com](http://www.omixsupport.com)