

All Terrain Flares 11-14 Ford F250/F350 Super Duty

Components:

1. Front Flares (2)
2. Rear Flares (2)

Tools required:

- Utility knife
 - #2 Phillips driver
 - Socket wrench
 - 7/32" Socket
 - 3/8" Socket
 - Awl of Similar Pointed Tool
- 6 mm Allen Wrench



Hardware List:

1. M8 Socket Head Cap Screw (38 pcs)



2. M8 Locking Hex Nut (38 pcs)



3. 1/4" Locking Hex Nut (4 pcs)



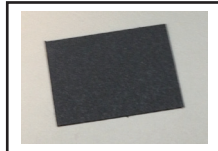
4. M8 Flat Washer (42 pcs)



5. Edge Trim Tool



6. Plastic Square Tab (8 pcs)



7. Philips Screw (8 pcs)



8. Roll of Edge Trim (30 ft.)



9. 1/2" x .260" x 3/4" Plastic Spacer (4 pcs)



10. 1/4x20 x 1-1/2" Button Head Screw (4 pcs)



11. 1/4" x 1-1/4" Black Fender Washer (4 pcs)



12. Screw S-Clamp (8 pcs)



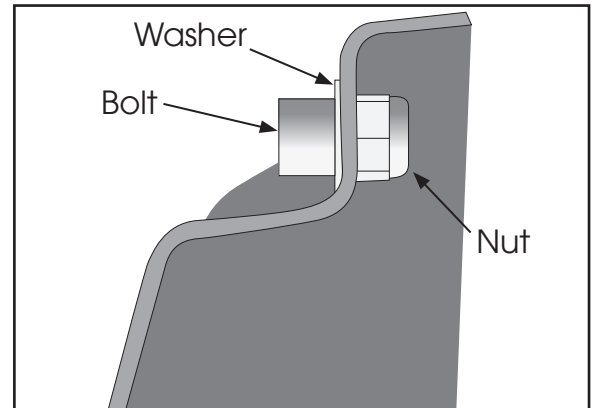
Read all instructions thoroughly before installation.



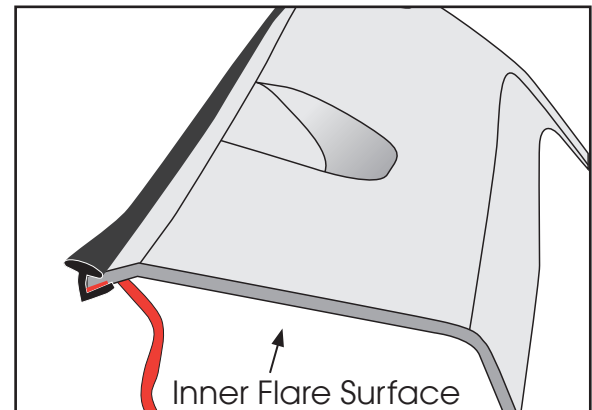
460 HORIZON DR. SUITE 400 | SUWANEE, GA 30024 | PHONE: 770-614-6101 | FAX: 770-614-6069 | info@omix-ada.com

All Terrain Flares 11-14 Ford F250/F350 Super Duty

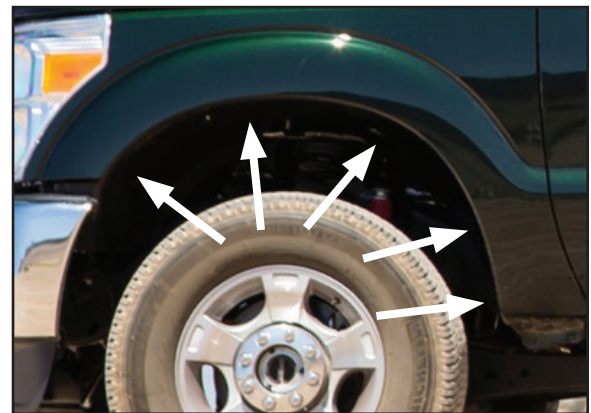
1. Install supplied bolts, washers, and locking nuts into each flare.



2. Clean inside of top lip edge with rubbing alcohol. Install edge trim by removing red vinyl tape covering only a few inches at a time. Applying adhesive side of edge trim to inner side of flare. Install edge trim to the top edge of flare (the edge that contacts vehicle). Do not stretch trim while being applied. Trim excess from ends.



3. Remove five factory installed screws with 7/32" socket wrench. Save factory screws for reinstallation.





OMIX-ADA, Inc.

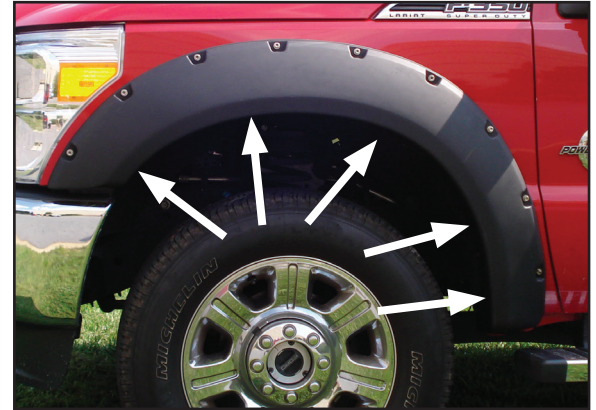


81630.05

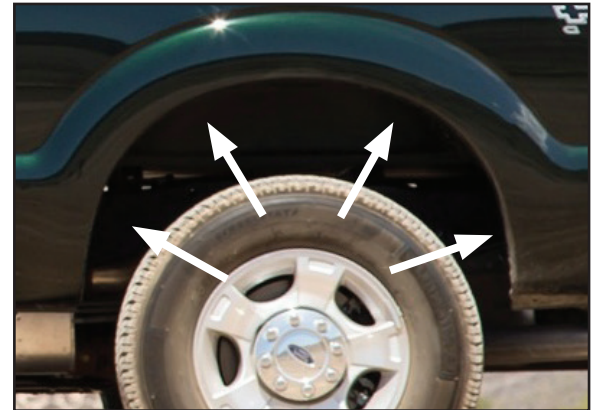
460 HORIZON DR. SUITE 400 | SUWANEE, GA 30024 | PHONE: 770-614-6101 | FAX: 770-614-6069 | info@omix-ada.com

All Terrain Flares 11-14 Ford F250/F350 Super Duty

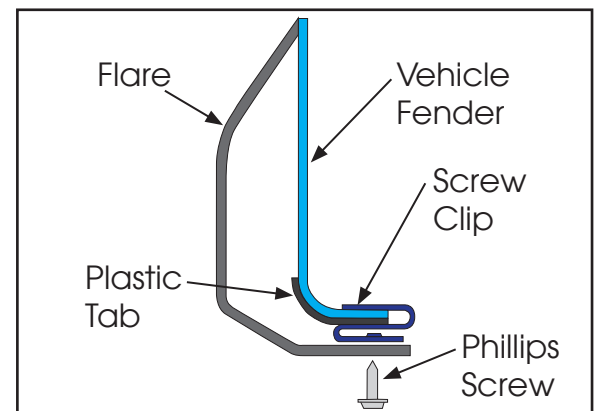
4. Position flare on fender, lining up factory holes with holes in flare. Reinstall factory screws through holes in flare and fender. Moderate pressure may be required to get holes to line up. Complete front flare installation.



5. Hold flare to fender and note 4 holes in fender that align to 4 holes in flare. Install plastic tabs over 4 factory holes shown.



6. Install Screw Clips over inner lip edge of fender centered over plastic tabs. Install flare using supplied Phillips Screws. Moderate pressure against the flare may be needed for mounting holes to align.





OMIX-ADA, Inc.



81630.05

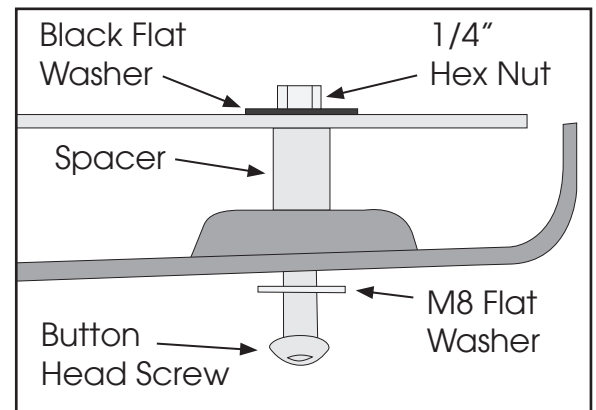
460 HORIZON DR. SUITE 400 | SUWANEE, GA 30024 | PHONE: 770-614-6101 | FAX: 770-614-6069 | info@omix-ada.com

All Terrain Flares 11-14 Ford F250/F350 Super Duty

7. Install button head screws, washers, spacers, and nuts into through two bottom holes in flare through two factory holes. See step 8 for an installation guide.



8. Start screw from bottom, through M8 washer, through hole in flare. Install spacer between flare and sheet metal. Slide screw through hole in sheet metal and through a Black Fender Washer and a locking hex nut. Tighten nut. Complete rear flare installation.



9. Complete rear flare installation.





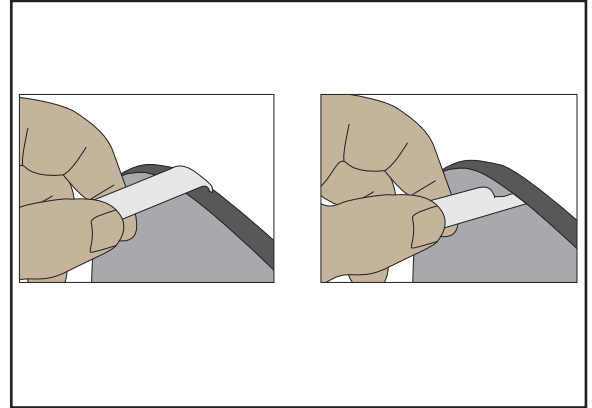
OMIX-ADA, Inc.

81630.05

460 HORIZON DR. SUITE 400 | SUWANEE, GA 30024 | PHONE: 770-614-6101 | FAX: 770-614-6069 | info@omix-ada.com

All Terrain Flares 11-14 Ford F250/F350 Super Duty

10. Use supplied edge trim tool to seat edge trim against vehicle with curved end; slide it under trim along vehicle fender. Use flat end of tool to seat trim against flare; slide tool between trim and flare.



PAINTING:

1. Lightly sand flares with 320 grid sandpaper.
2. Remove all surface contaminants from flares using an approved grease and wax remover.
3. Wipe flares with a tack rag to remove any dust or dirt.
4. Apply two even coats of adhesion promoter to flares. Allow recommended flash time between coats. Let second coat dry for 15 minutes before primer application.
5. Apply an even coat of primer to flare surface (a high build primer is recommended).
6. Paint flares with an automotive grade paint (a flex additive must be added to paint).

OMIX-ADA® TECHNICAL SUPPORT

PHONE: M-F 8am - 5pm EST 1-800-449-6649 | EMAIL: techsupport@omix-ada.com

FOR WARRANTY INFORMATION VISIT: www.Omix-Ada.com