



## INSTALLATION INSTRUCTIONS

# 2017+ CAN-AM® MAVERICK X3® ROOF MOUNTS



PRODUCT INCLUDES:

(1) Roof Mount (LH and RH) #41634

\* LIGHTS SOLD SEPARATELY

**\*THIS MOUNT FITS THE FOLLOWING LIGHTS:**

**(1) 40" RDS-Series PRO® / E-Series PRO® / SR-Series PRO®**

### **IMPORTANT**

THANK YOU FOR PURCHASING RIGID PRODUCTS FOR YOUR VEHICLE.

Please read through all of these Instructions and tips before proceeding with the installation.

We do our best to provide a simple installation process for all applications however a professional installation is always recommended.

**Always disconnect any power sources connected to your vehicle  
before servicing fuses or electrical systems.**

## STEP 1

Remove the factory roof from vehicle.

## STEP 2

Remove the factory warning sticker under the roof and drill the rivets out using a 3/16" drill bit.

See Figures 2, 2.1

FIGURE 2



FIGURE 2.1



## STEP 3

Tape around the circled hole. Drill or file out the circled hole until the nubs are removed. A stepped drill bit is recommended.

See Figures 3, 3.1

FIGURE 3

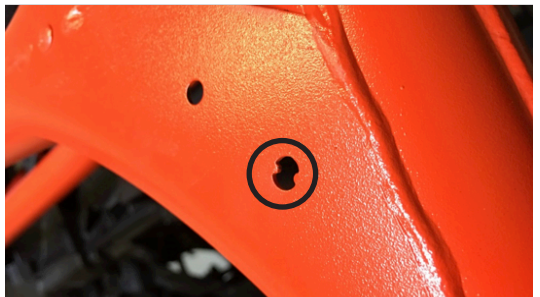


FIGURE 3.1



## STEP 4

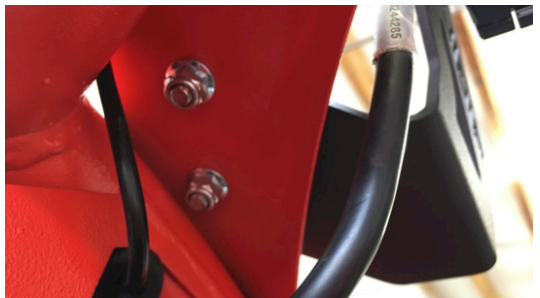
Install the RIGID roof mount brackets with the provided hardware as shown. Do not fully tighten until the RIGID light bar is mounted and centered.

See Figures 4, 4.1

FIGURE 4



FIGURE 4.1



## STEP 5

Once the RIGID light is installed and tight, center the light brackets and tighten bolts. Re-install the roof.

See Figure 5

FIGURE 5



**Wiring:** Wire your lights according to the instructions included with the light. Take care to avoid any heat sources and sharp or abrasive surfaces.

**Your installation is now complete.  
Welcome to the Rigid Nation!**

---

## WARRANTY INFORMATION

For warranty information, visit [www.rigidindustries.com/about/warranty](http://www.rigidindustries.com/about/warranty)

779 N Colorado St, Gilbert, AZ 85233 • 855-760-5337  
[www.rigidindustries.com](http://www.rigidindustries.com)

RDS-Series PRO, E-Series PRO, SR-Series PRO, RIGID and Rigid Industries are registered and/or common law marks owned by JST Performance, LLC, a Delaware limited liability company d/b/a Rigid Industries.

11-12458-A