



INSTALLATION INSTRUCTIONS

2016-2017 CHEVY® 1500® GRILLE



PRODUCT INCLUDES:

- (1) Grille
- (1) Mounting Hardware Kit
- (30) 8-35 x 1/2" Bolts
- (30) 8-32 SS Nylocks

* LIGHTS SOLD SEPARATELY

***THIS GRILLE FITS THE FOLLOWING LIGHTS:
(1) 20" E-SERIES® OR (1) 20" RADIANCE®**

IMPORTANT

THANK YOU FOR PURCHASING RIGID INDUSTRIES' PRODUCTS FOR YOUR VEHICLE.
Please read through all of these Instructions and tips before proceeding with the installation.
We do our best to provide a simple installation process for all applications, however
a professional installation is always recommended.

**Always disconnect any power sources connected to your vehicle
before servicing fuses or electrical systems.**

STEP 1

Remove the (12) plastic push pins from the top of the plastic cover and remove.

STEP 2

Remove the (4) 10mm bolts from top of the grille. Then gently pull on the top and bottom of each side to remove the grille.

See Figures 2, 2.1, 2.2, 2.3 and 2.4

FIGURE 2

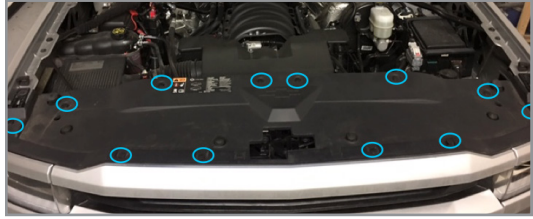


FIGURE 2.1



FIGURE 2.3



FIGURE 2.4



STEP 3

Once removed, lay the grille on its front face and remove the plastic push pins to remove the shroud.

See Figures 3 and 3.1

FIGURE 3

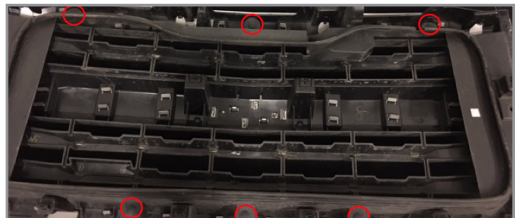


FIGURE 3.1



STEP 4

Once the shroud is removed, tape the grille shell around where you will cut to prevent any damage. Using a cut off wheel, air saw or equivalent, cut away the plastic insert as shown, cutting along the edge.

See Figures 4 and 4.1

FIGURE 4

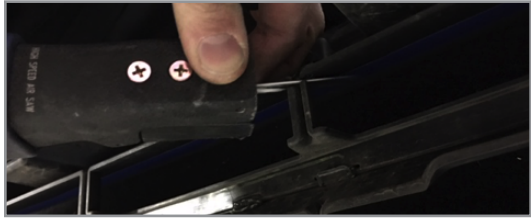
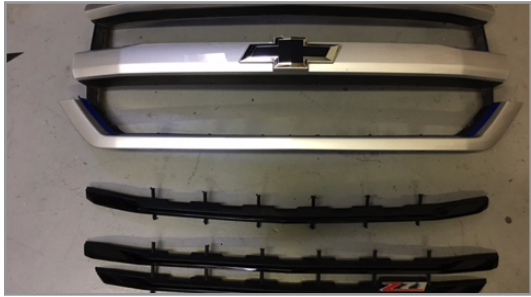


FIGURE 4.1



STEP 5

Using a grinder or equivalent, smooth out all cut marks.

STEP 6

Place the RIGID grille into the factory grille shell. Mark the 4 corner holes of the bottom RIGID grille and drill them out using a 3/16" drill bit.

See Figure 6 and 6.1

FIGURE 6

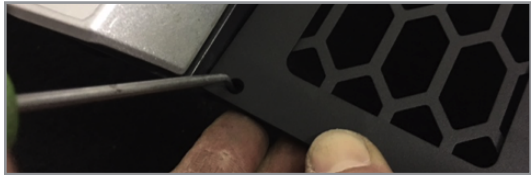


FIGURE 6.1

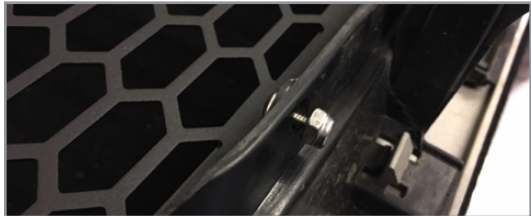


STEP 7

Insert the provided hardware into the 4 outer holes and snug them tight. Then mark all other mounting tabs to drill. Once marked, remove the RIGID grille and drill holes where marked. Then re-install the RIGID grille and install using the hardware provided.

See Figure 7

FIGURE 7



STEP 8

Once the lower RIGID grille is installed and all bolts are tight, repeat all steps for the upper RIGID grille.

STEP 9

After both upper and lower grille inserts are in, re-install the shroud onto the back of the shell using the factory push pins. Then re-install the grille onto the truck.

See Figure 9

Once installed, make sure the RIGID grille contours the grille shell correctly.

FIGURE 9



Wiring: Wire your lights according to the instructions included with the light. Take care to avoid any heat sources and sharp or abrasive surfaces.

**Your installation is now complete.
Welcome to the Rigid Nation!**

WARRANTY INFORMATION

For warranty information, visit www.rigidindustries.com/about/warranty

779 N Colorado St, Gilbert, AZ 85233 • 855-760-5337
www.rigidindustries.com

E-Series, Radiance and Rigid Industries are registered and/or common law marks owned by JST Performance, LLC, a Delaware limited liability company d/b/a Rigid Industries.

PKG-IS-226-A