

Installation Instructions

18-19 Jeep Wrangler JL
and Jeep Wrangler JL
Unlimited 4 Dr

IS-7688_RevE



TrailCrawler™ Skid Plate

For proper installation and best possible fit, please read all instructions BEFORE you begin.
For technical assistance or to obtain missing parts, please call Customer Relations at 1-800-328-2409.

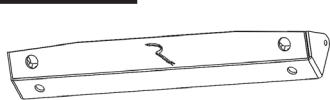
Important Safety Information



- CAUTION - Before driving, ensure that the bumper is properly secured to vehicle.
- Periodically check all components for tightness.

Contents

NOTE: Actual product may vary from illustration.



TrailCrawler
Skid Plate



8mm x 30mm
Allen Bolt (4)



8mm x 30mm O.D.
Flat Washer (4)

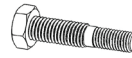


8mm Rivet
Nut (4)



Allen Wrench

Rivet Nut Installation Tool



Rivet Nut Install
Bolt (1)



Flat Washer (1)



Nut (1)

Tools Required



Socket
Wrench



Socket Set



Wrench Set



Safety glasses

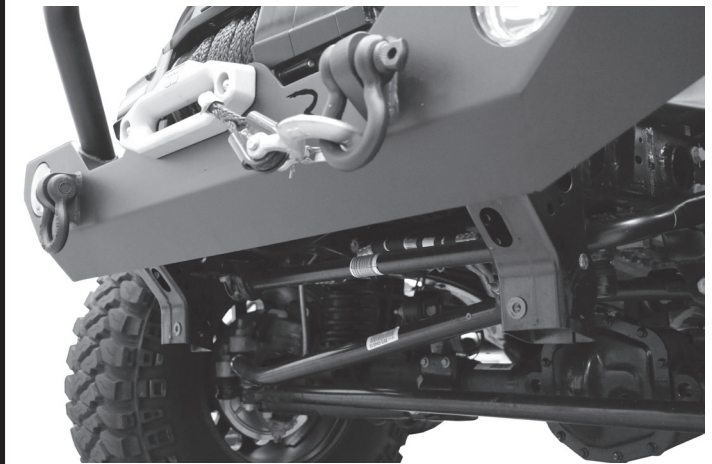
Installation

1

Remove any existing front skid plate on the vehicle, including the factory plastic skid plate.

See Figure 1

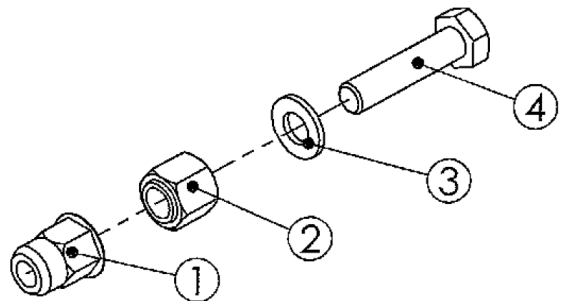
Figure 1



2

Assemble the Rivet Nut Tool as shown in Figure 2. #1 is the Rivnut.

Figure 2



3

Using the Rivet Nut Tool, insert the rivet nut into the hexagonal hole on the side of the frame bracket. Make sure the lip of the rivet nut is flat against the bracket.


To compress the rivet nut, securely hold the nut while rotating the bolt clock-wise

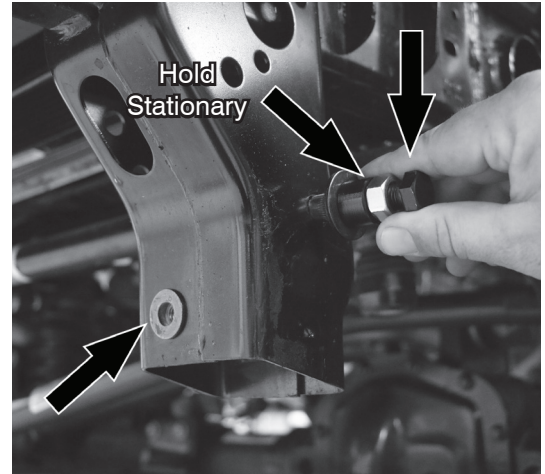
NOTE: Most Jeep JL Wranglers have a pre-installed rivet nut on the front of the frame bracket. If your vehicle does not have these, additional Rivet Nuts have been provided.

See Figure 3

Repeat on opposite side.

Figure 3

Rotate
Clock-wise 



Factory
Rivet Nut

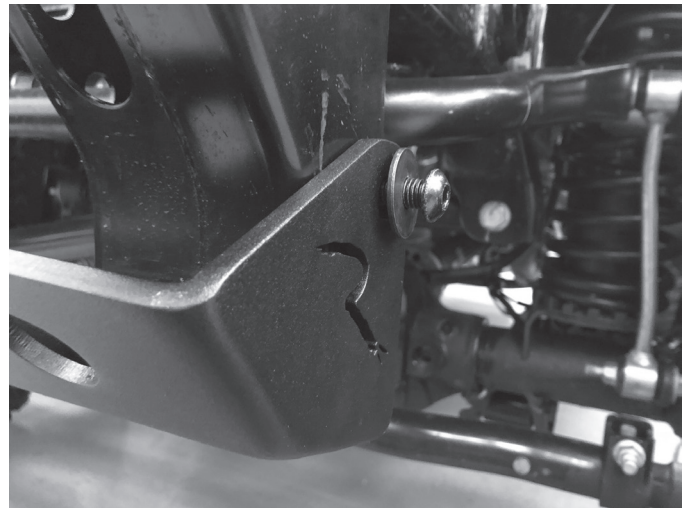
4

Install the TrailCrawler Lighted Skid Plate Assembly onto the vehicle using the provided Button Head Allen Bolts and Flat Washers on the side of the frame brackets.

Do not tighten hardware at this time.

See Figure 4

Figure 4



5

Place a flat washer into the front mounting point on the skid plate. Then insert the button head bolt.

Do not tighten hardware at this time.

See Figure 5 and 6

Figure 5



Figure 6

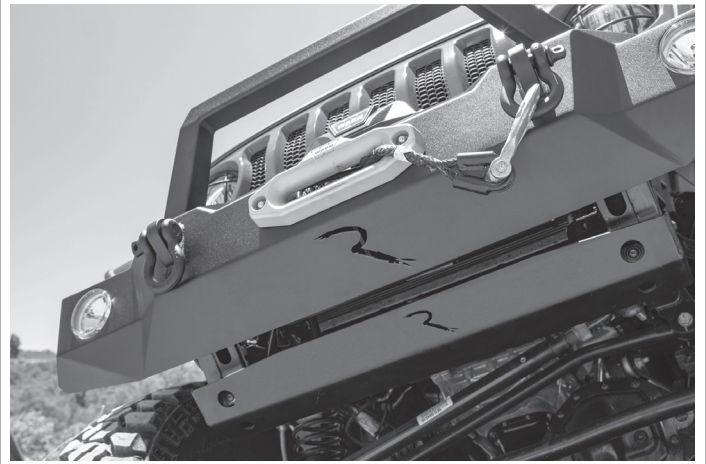


6

Check clearances around the TrailCrawler Skid plate to make sure there is no interference.

Tighten all hardware.

Figure 7



Care and Cleaning

Rampage products are built to last; any detergent you use to wash your vehicle is sufficient to clean the Skid Plate. Do not use any harsh abrasive detergents. Periodically check tightness of parts.

Congratulations!

You have purchased one of the many quality Rampage branded products offered by Lund International. We take the utmost pride in our products and want you to enjoy years of satisfaction from your investment. We have made every effort to ensure that your product is top quality in terms of fit, durability, finish and ease of installation.



The material that your product is made from can be recycled.
Please also consider recycling the packaging that your product came in.



800-328-2409 • Visit us at Rampageproducts.com
© 2018 Lund Motion Products, Inc. All rights reserved.
Rampage Products™ is a trademark of Lund Motion Products, Inc.

