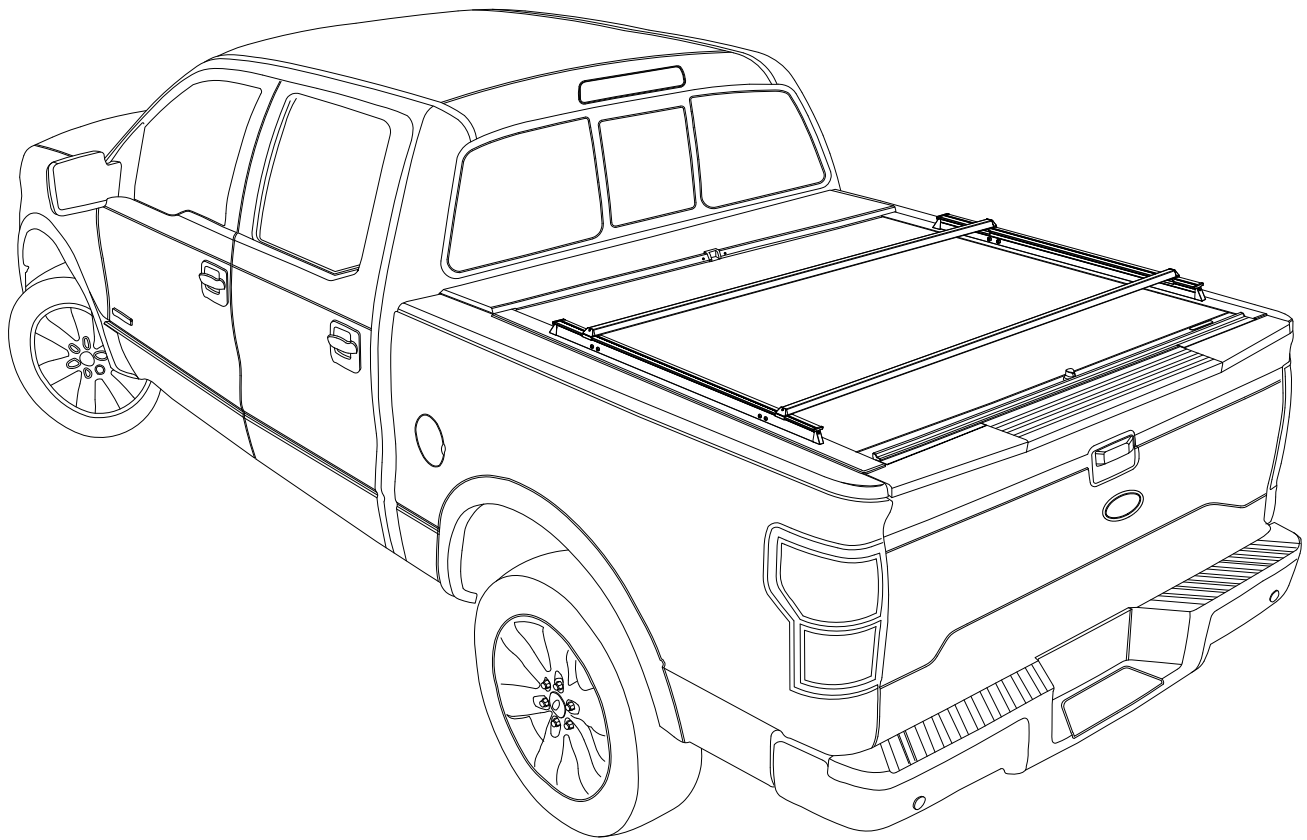




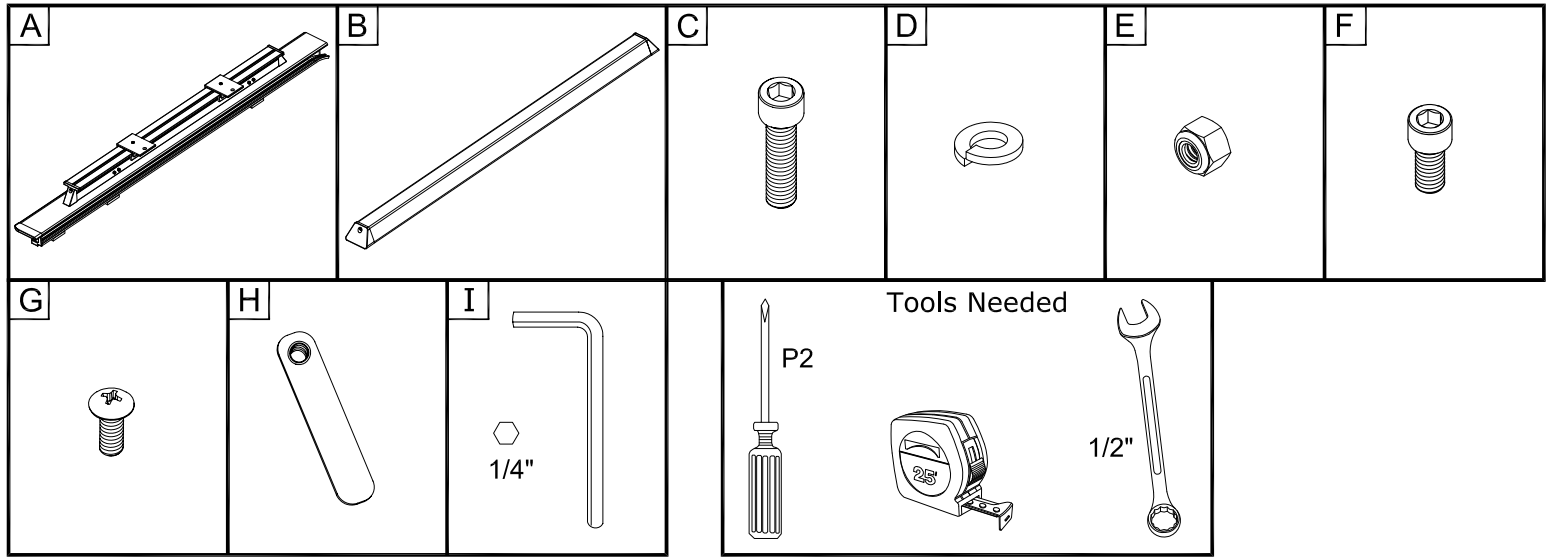
# QwikRak Installation Guide

## Ford F-150

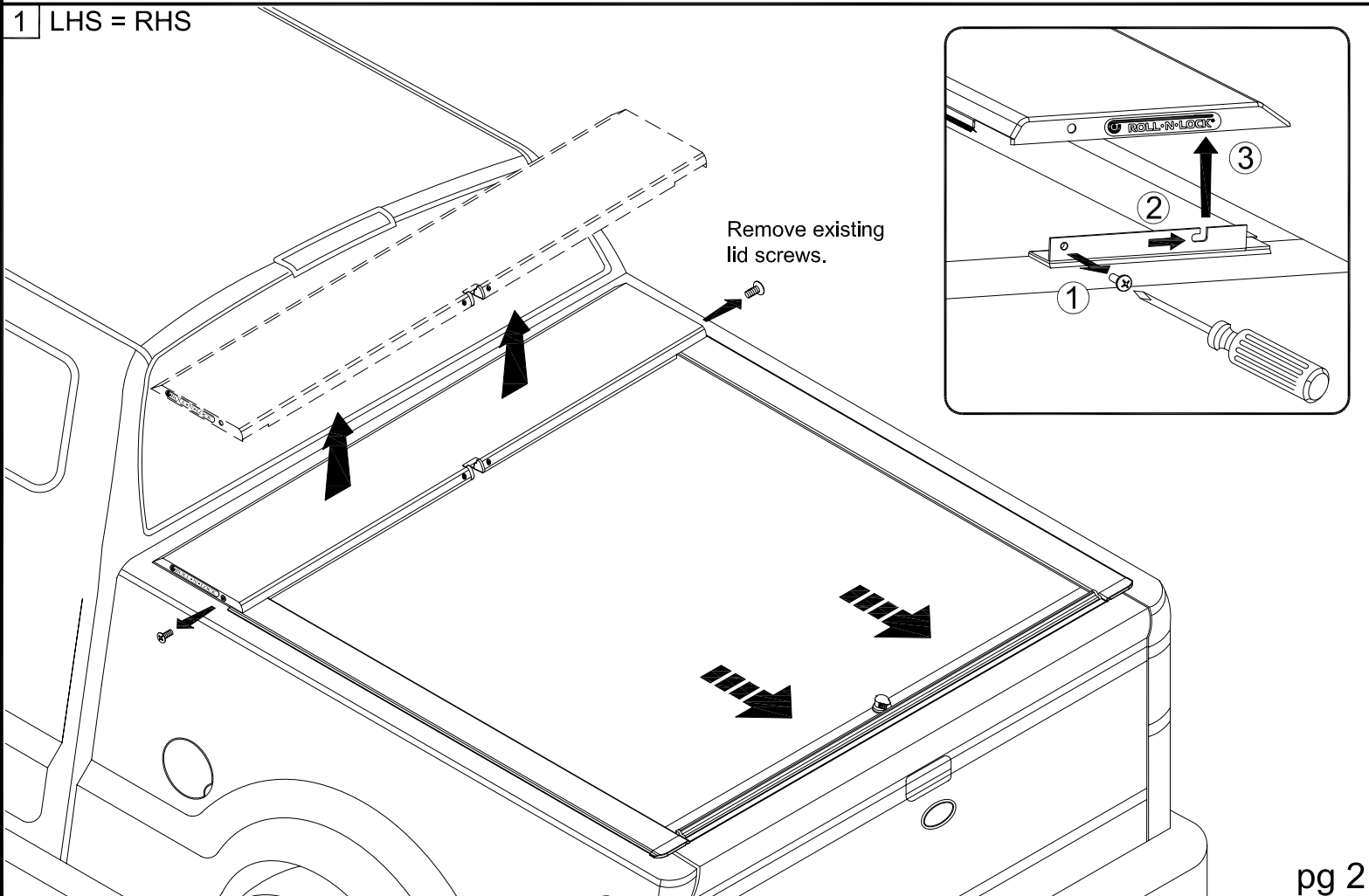


Product Code  
QR101 - QR102

Item	Part Name	Qty.	Item	Part Name	Qty.	Item	Part Name	Qty.
A	Qwikrak Track	2	D	5/16" Lock Washer	8/10	G	#10-24 X 3/8" Screw	2
B	Cross Bar	2	E	5/16" Nylon Lock Nut	4	H	Cargo Nut	2
C	5/16" x 1 1/4" Socket Cap Screw	6/8	F	5/16" x 3/4" Socket Cap Screw	6	I	1/4" Allen Wrench	1

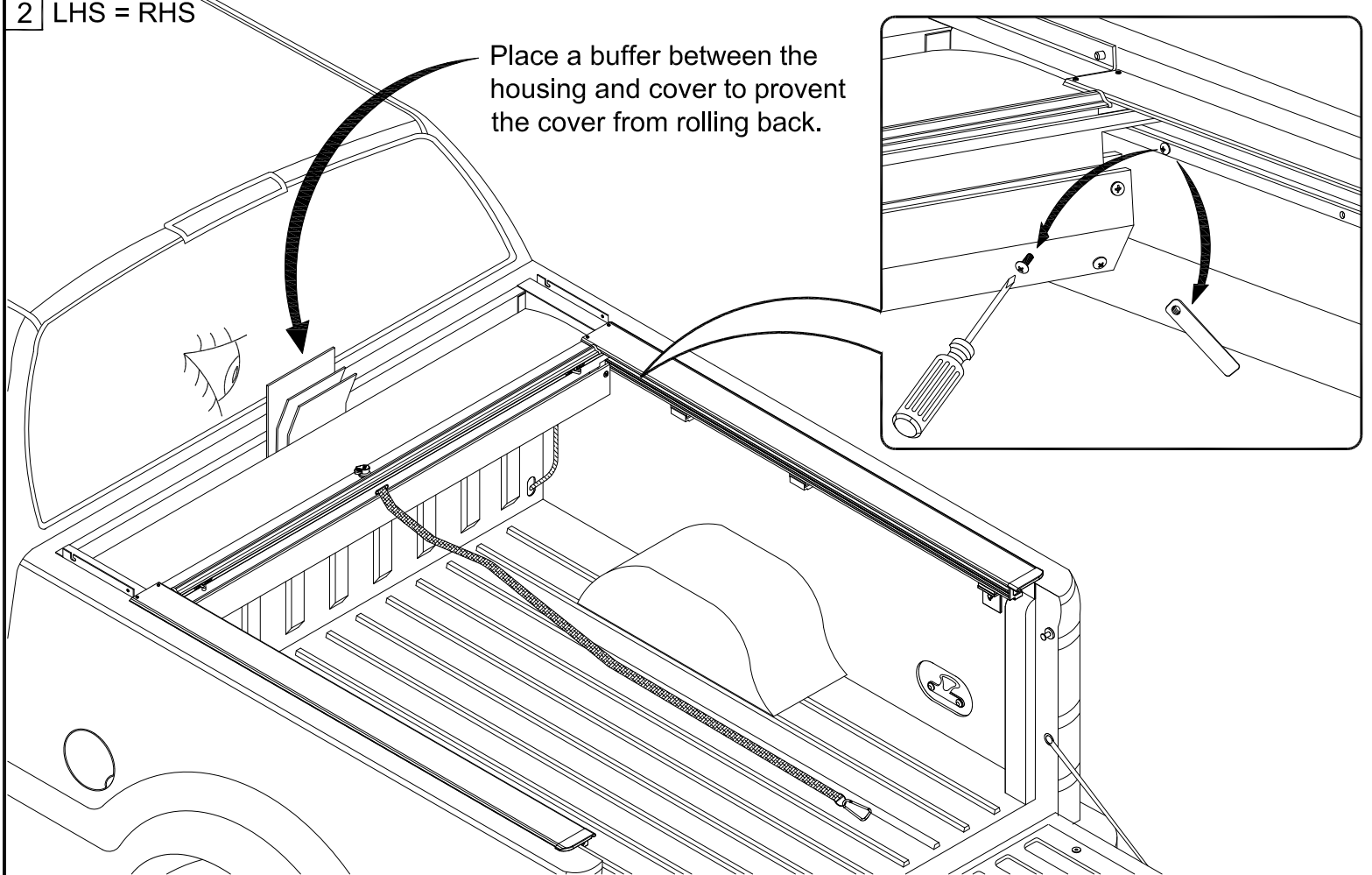


1 LHS = RHS



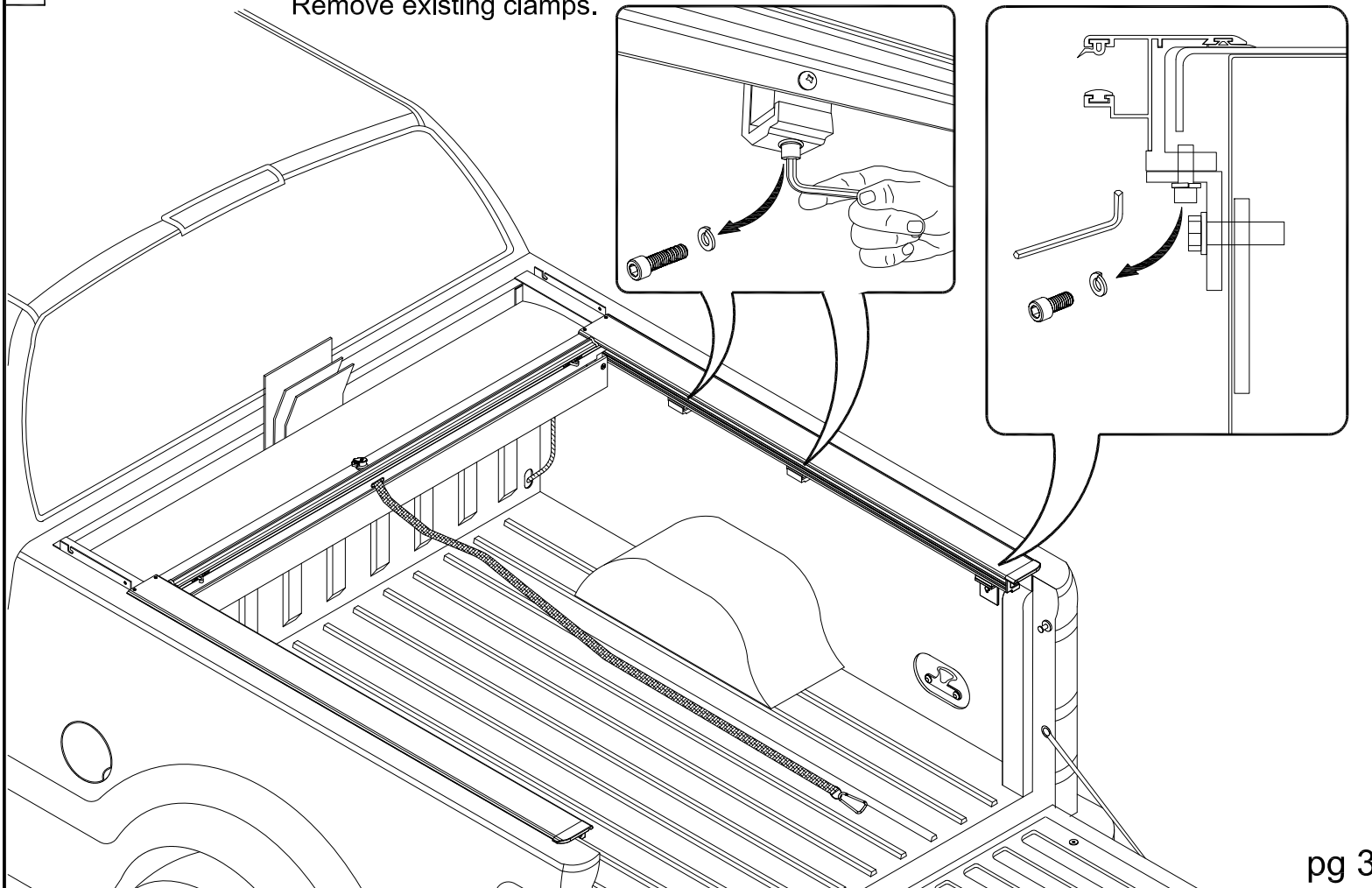
2 LHS = RHS

Place a buffer between the housing and cover to prevent the cover from rolling back.



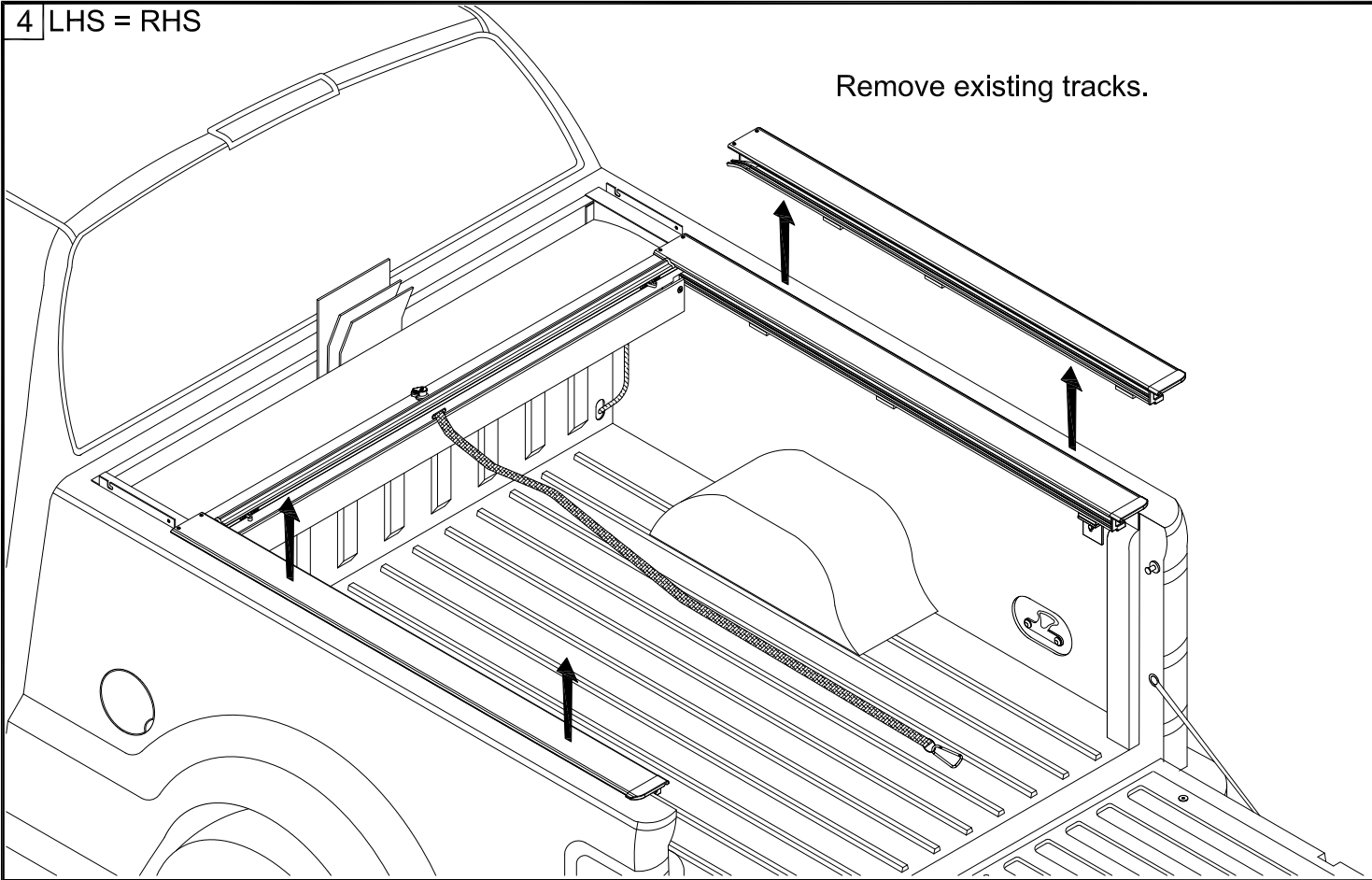
3 LHS = RHS

Remove existing clamps.



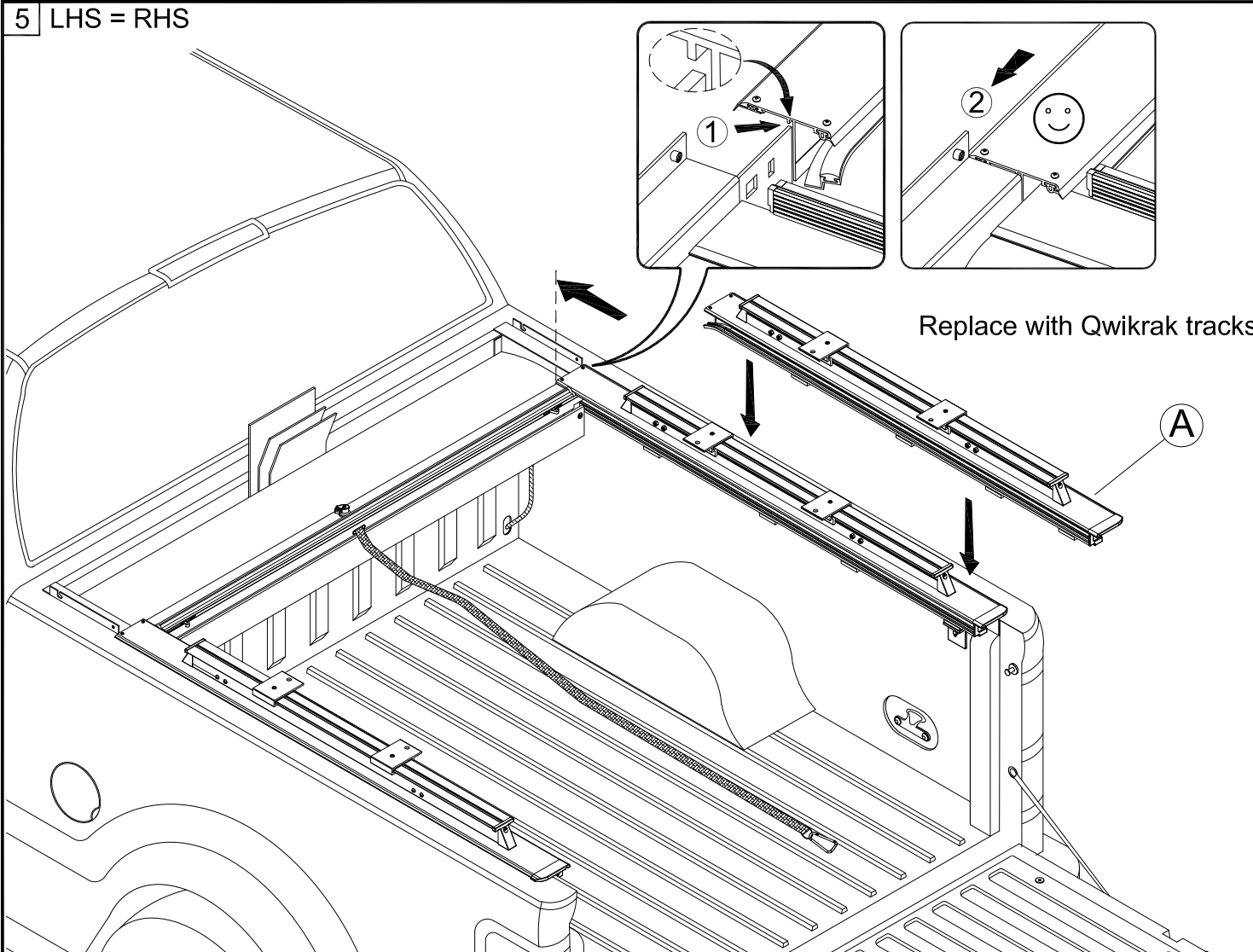
4 LHS = RHS

Remove existing tracks.



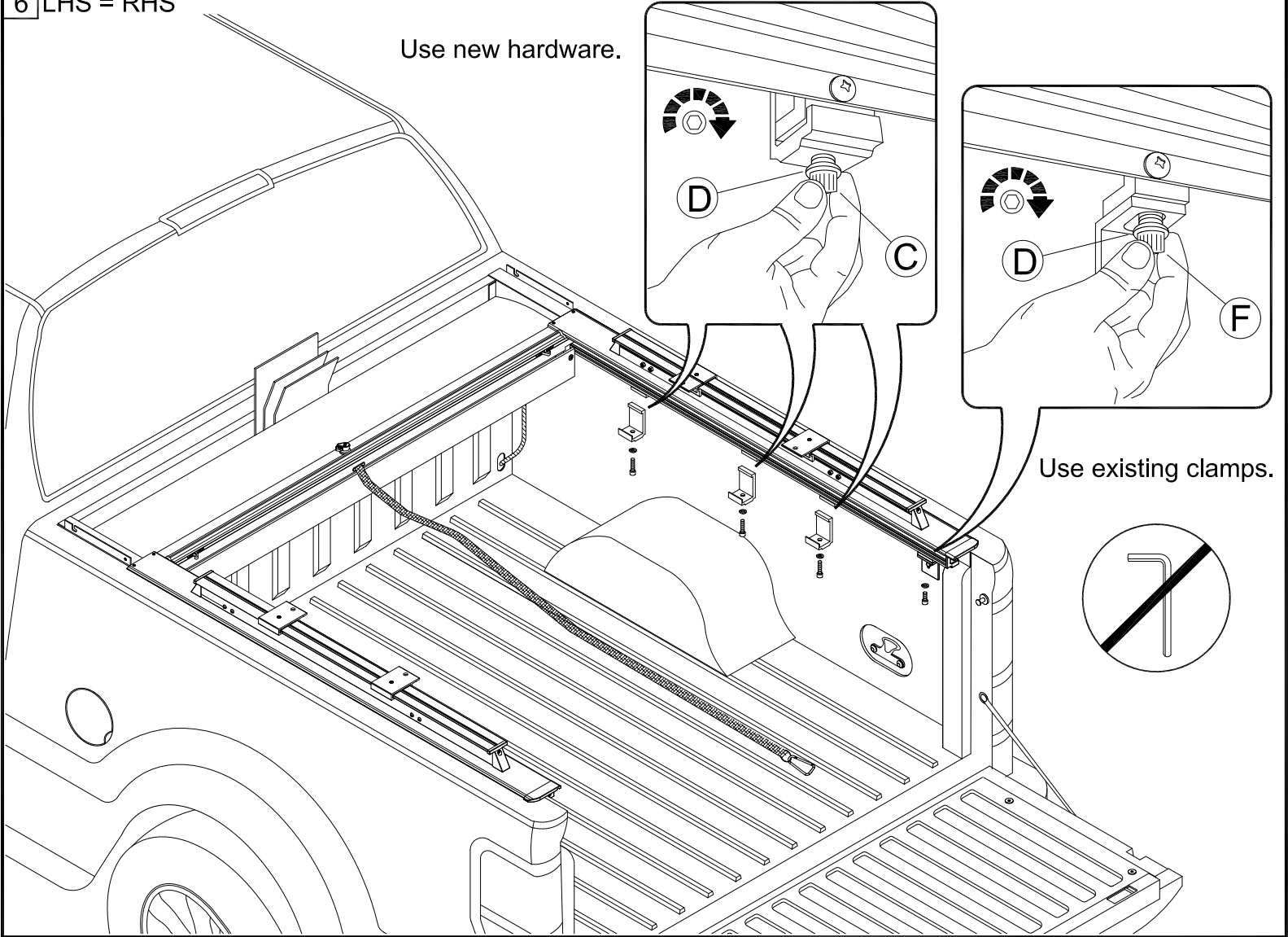
5 LHS = RHS

Replace with Qwikrak tracks.

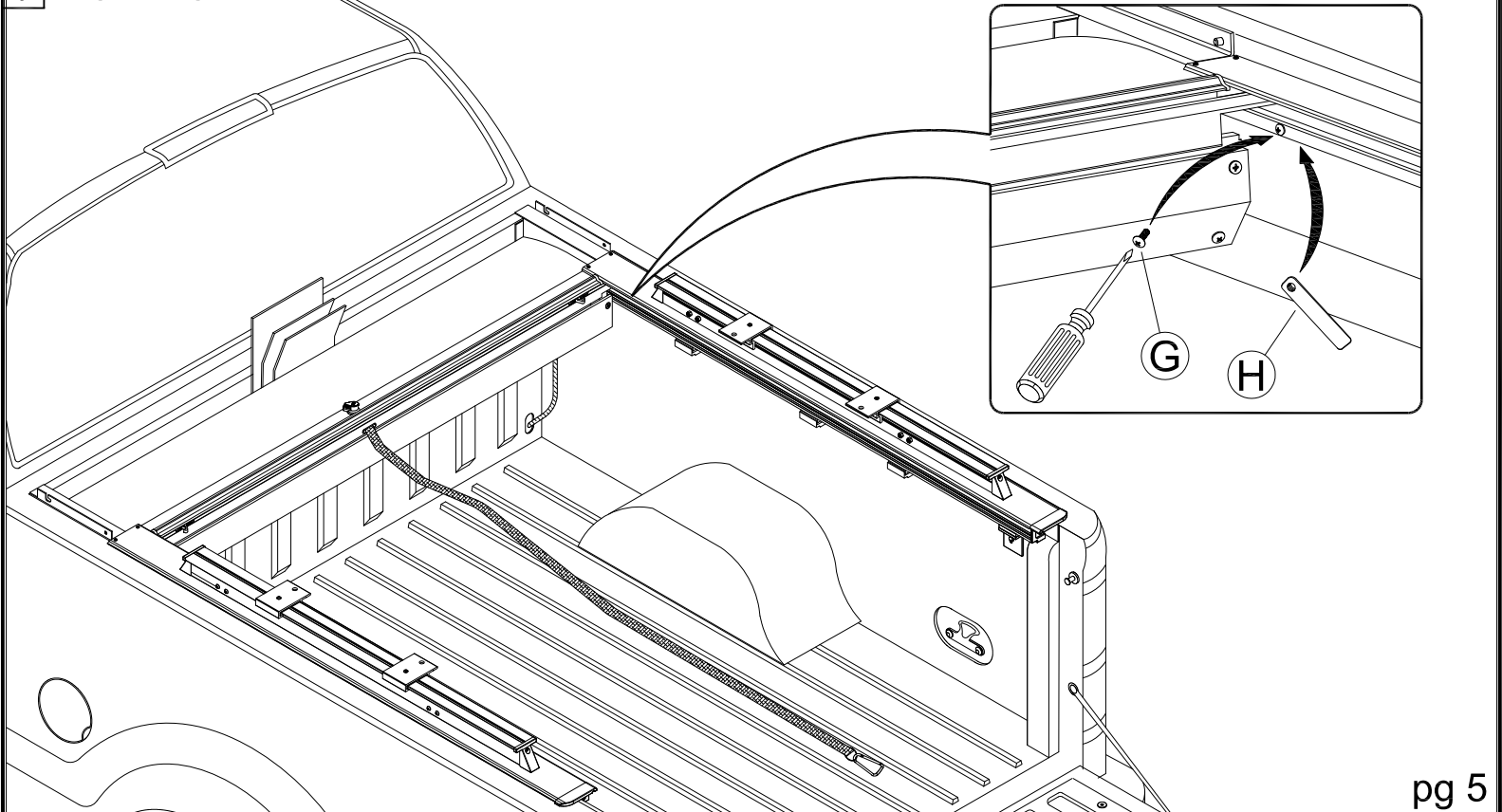


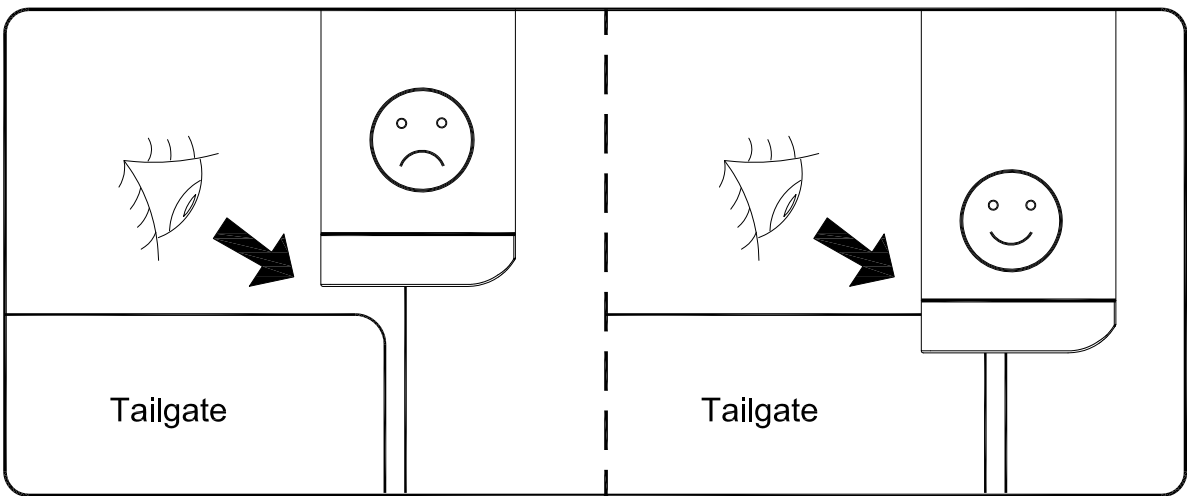
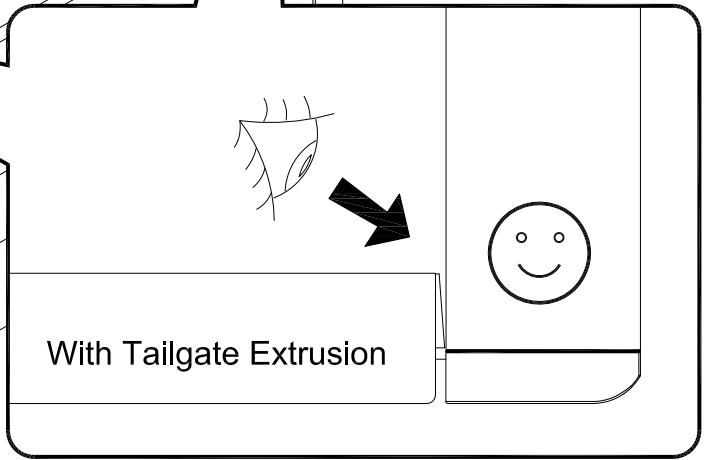
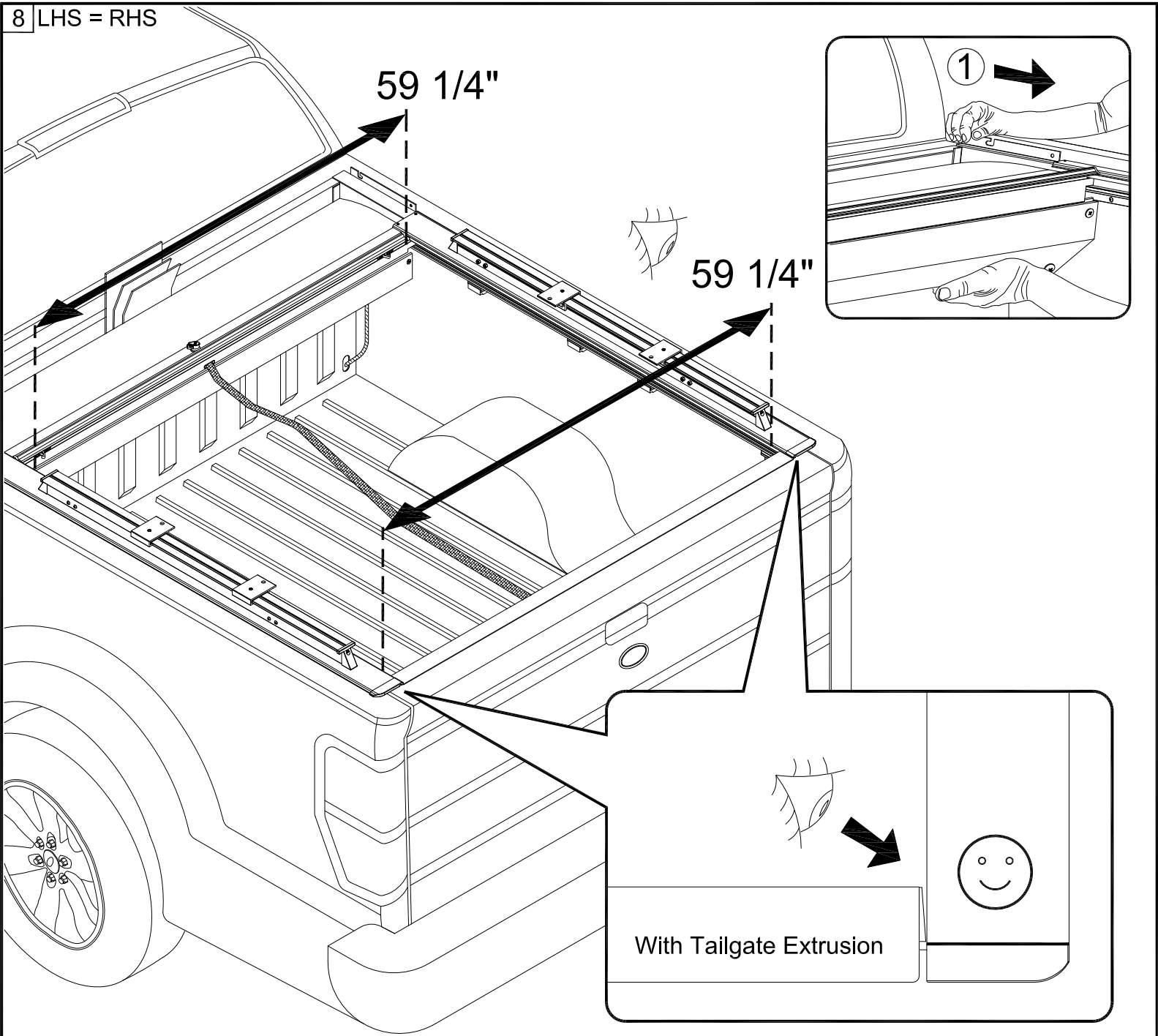
6 LHS = RHS

Use new hardware.



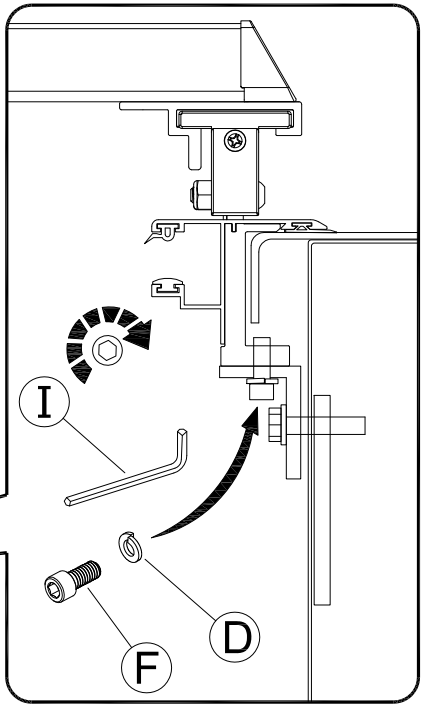
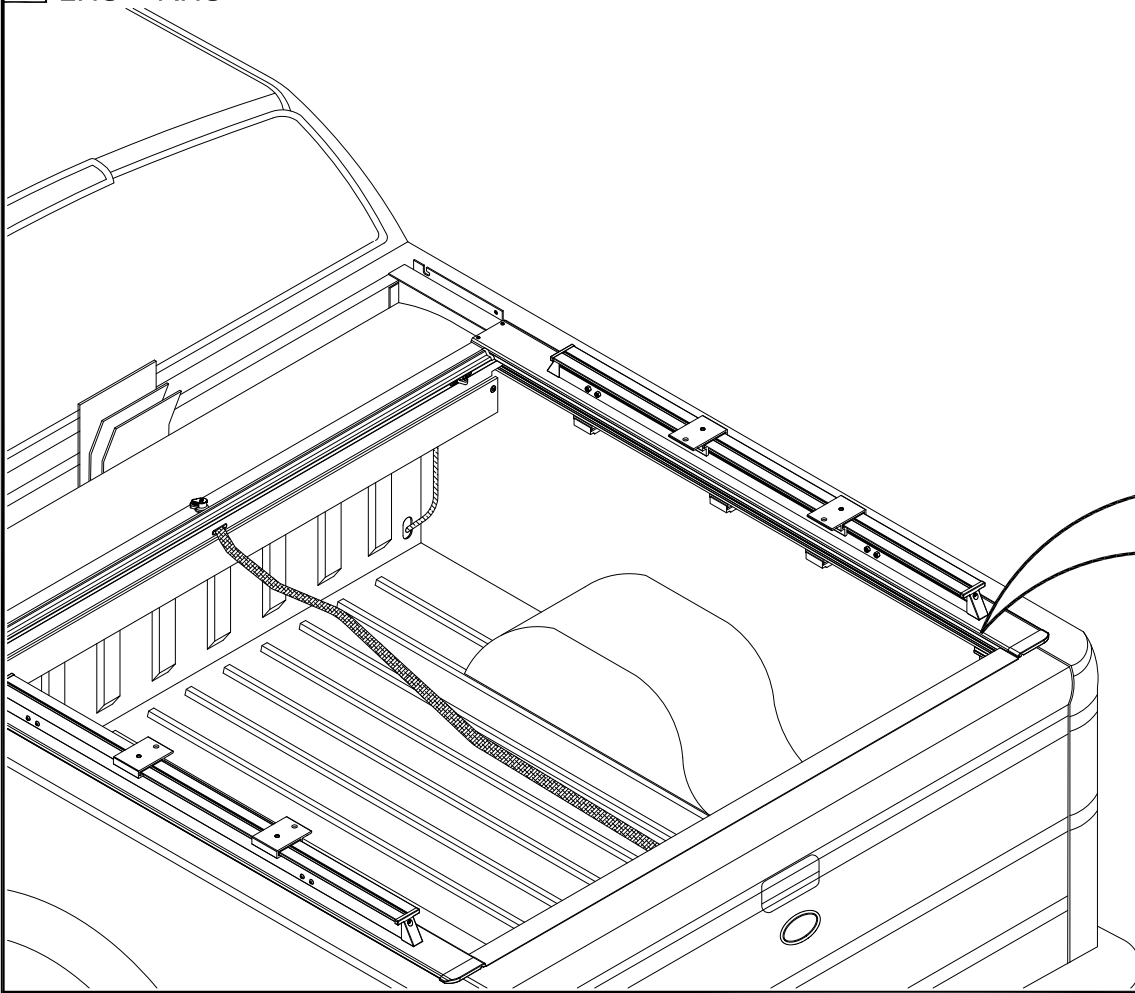
7 LHS = RHS





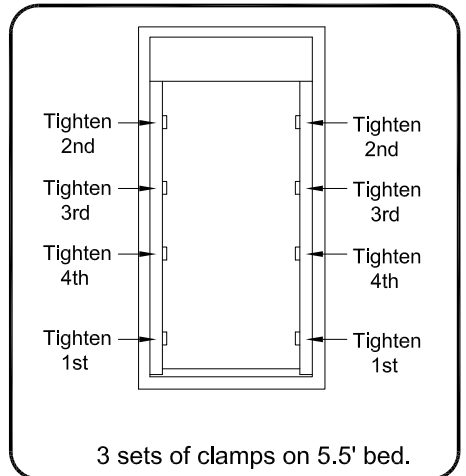
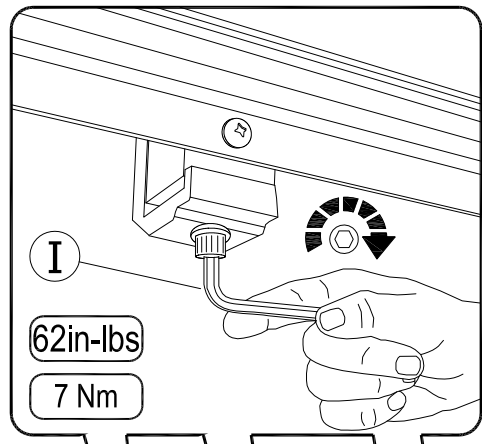
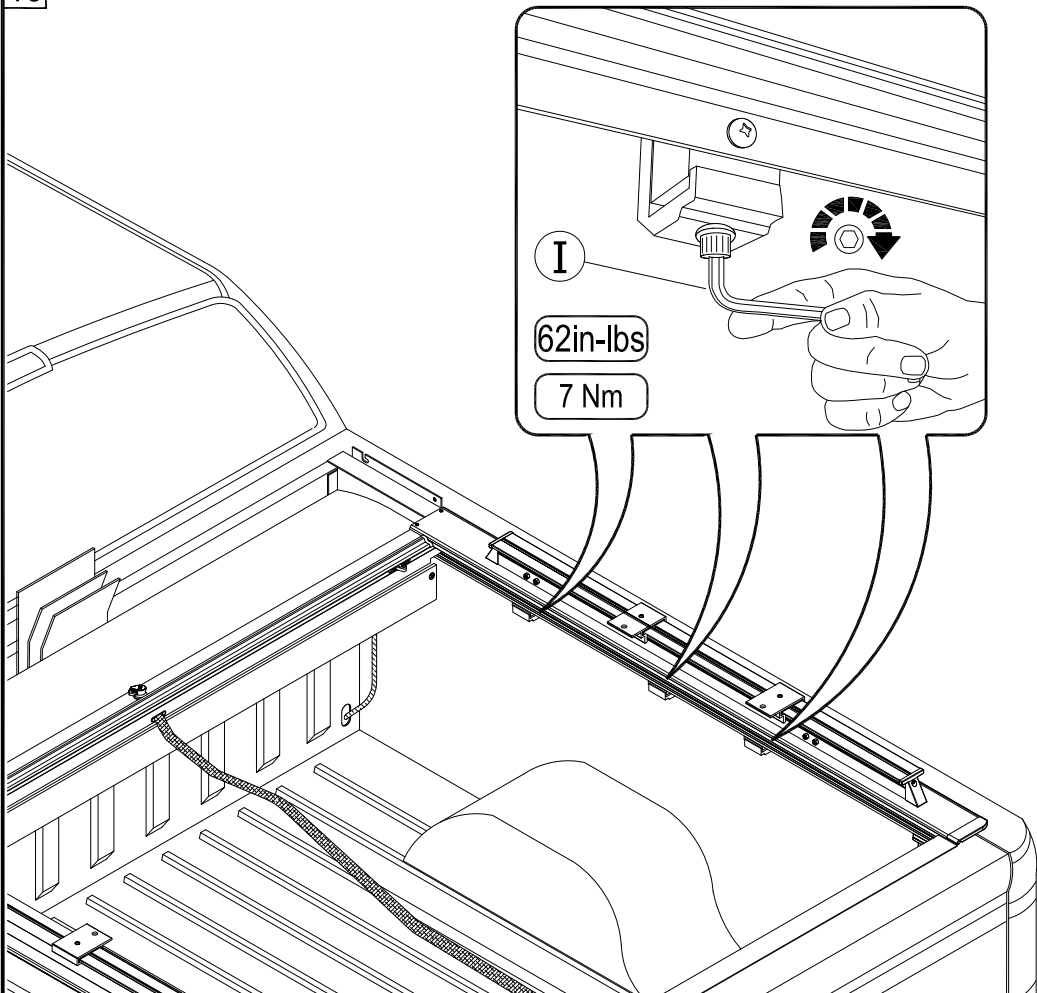
Without Tailgate Extrusion

9 LHS = RHS



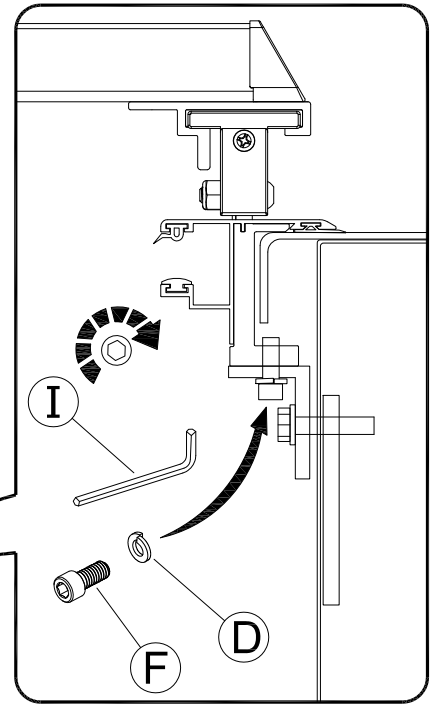
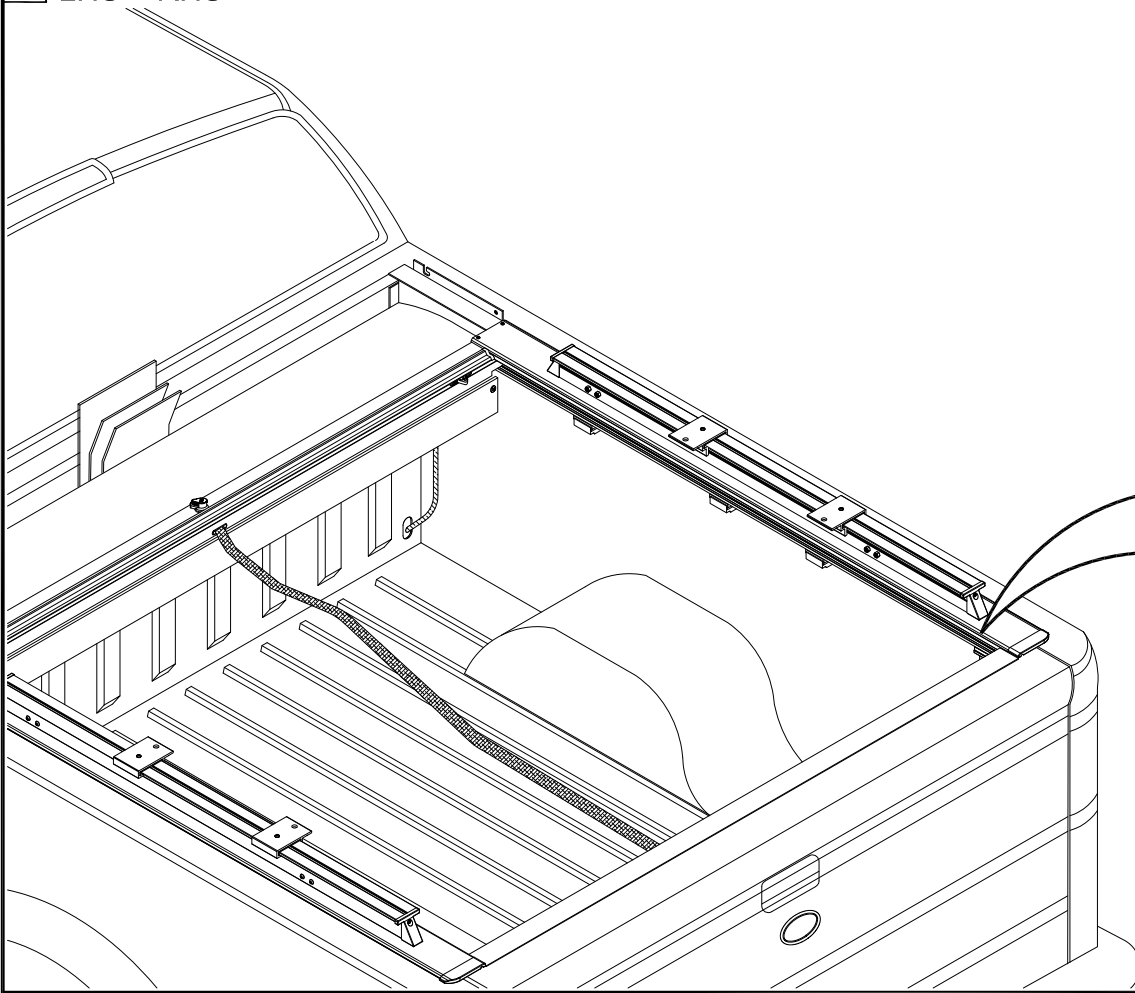
Use new hardware.

10 LHS = RHS



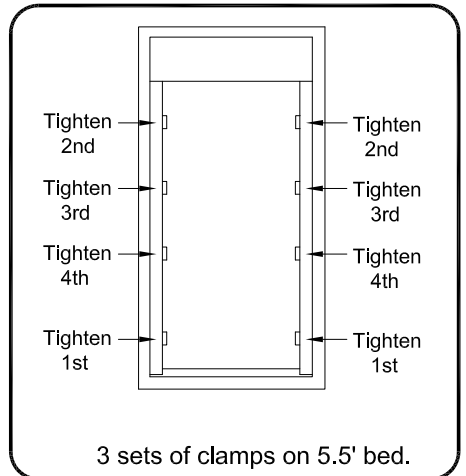
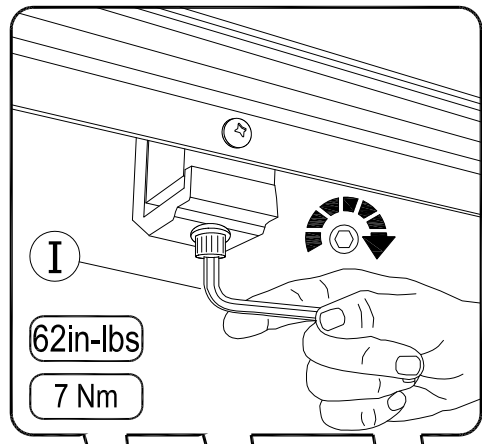
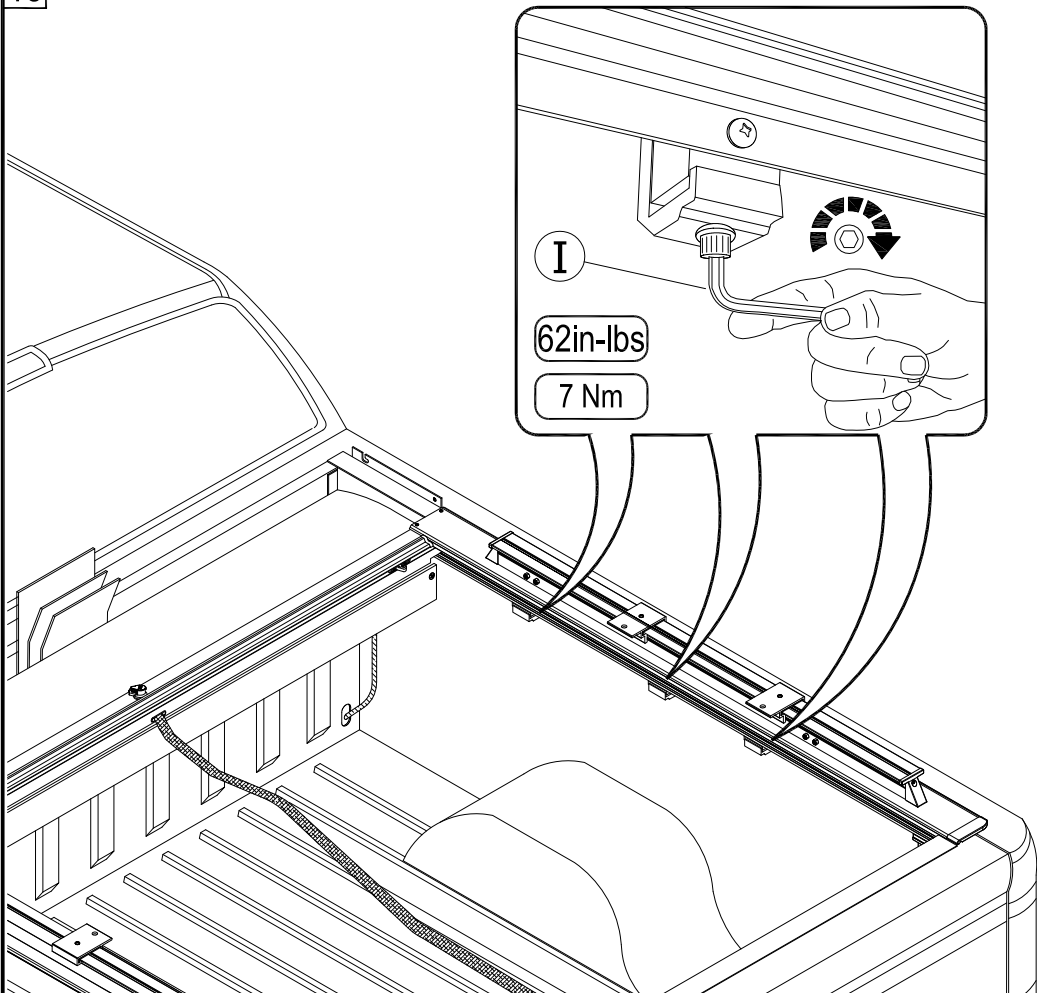
3 sets of clamps on 5.5' bed.

9 LHS = RHS



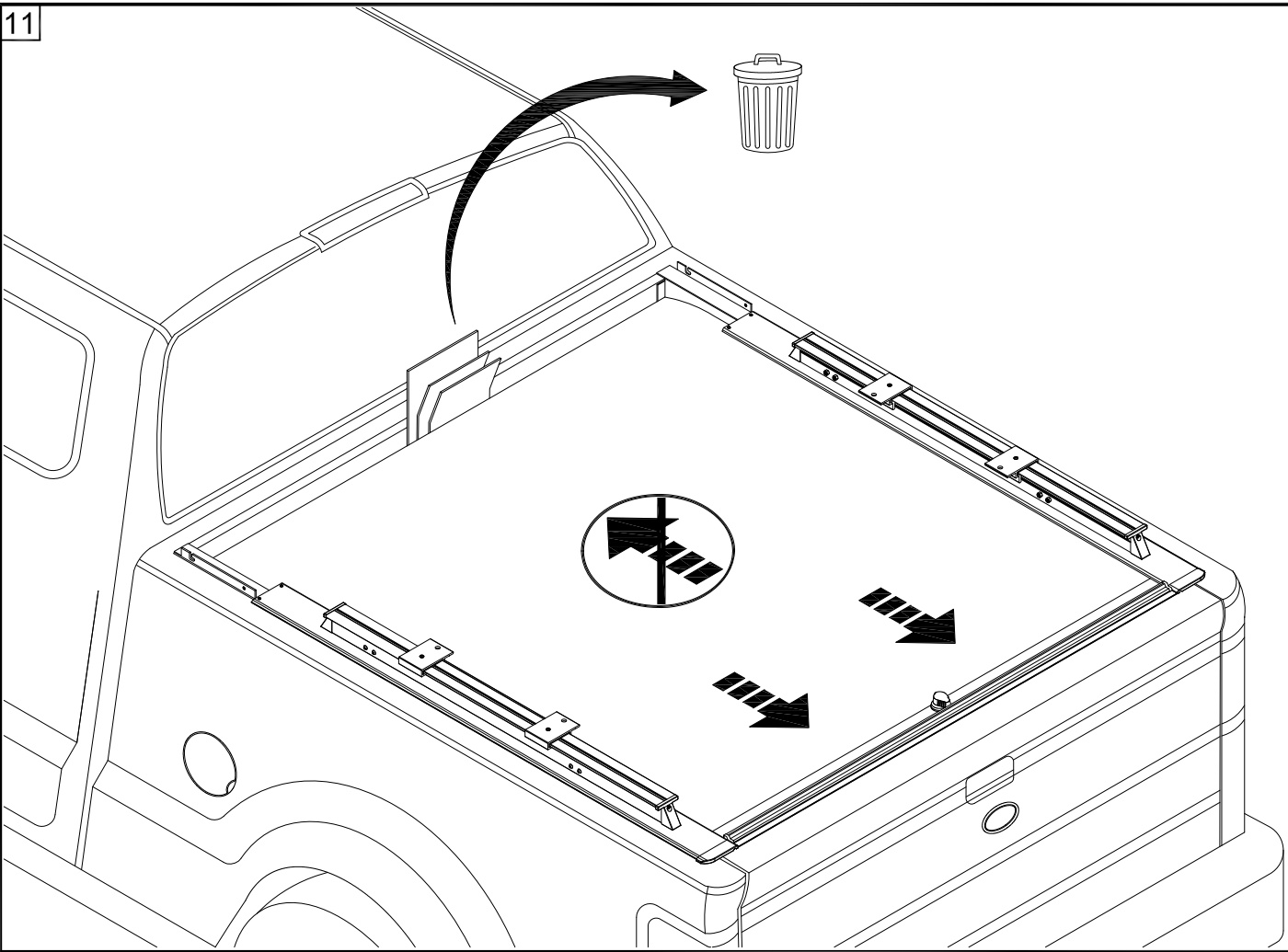
Use new hardware.

10 LHS = RHS

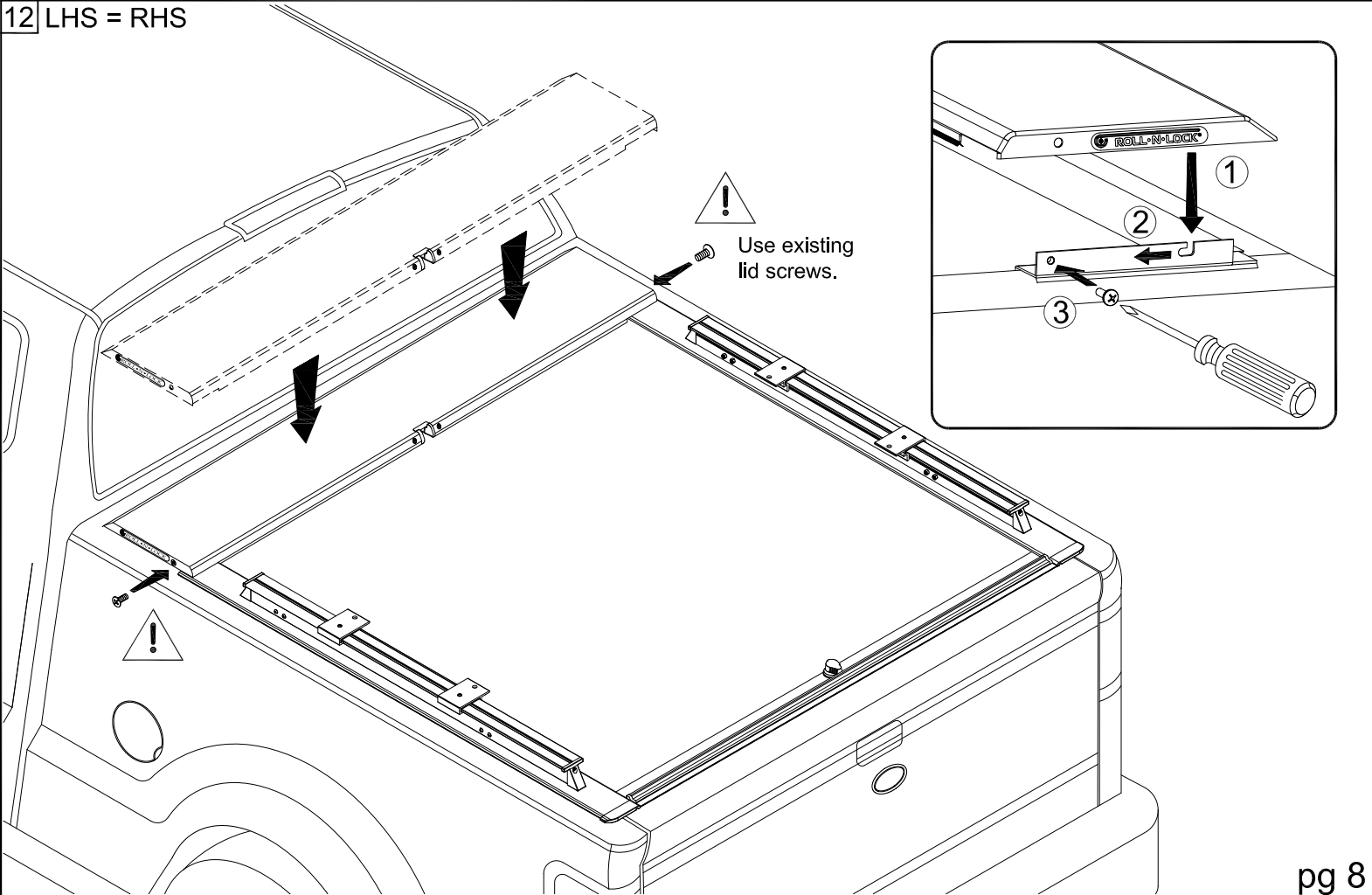


3 sets of clamps on 5.5' bed.

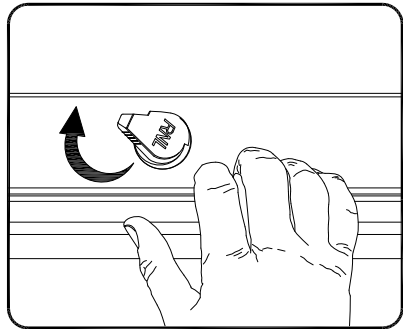
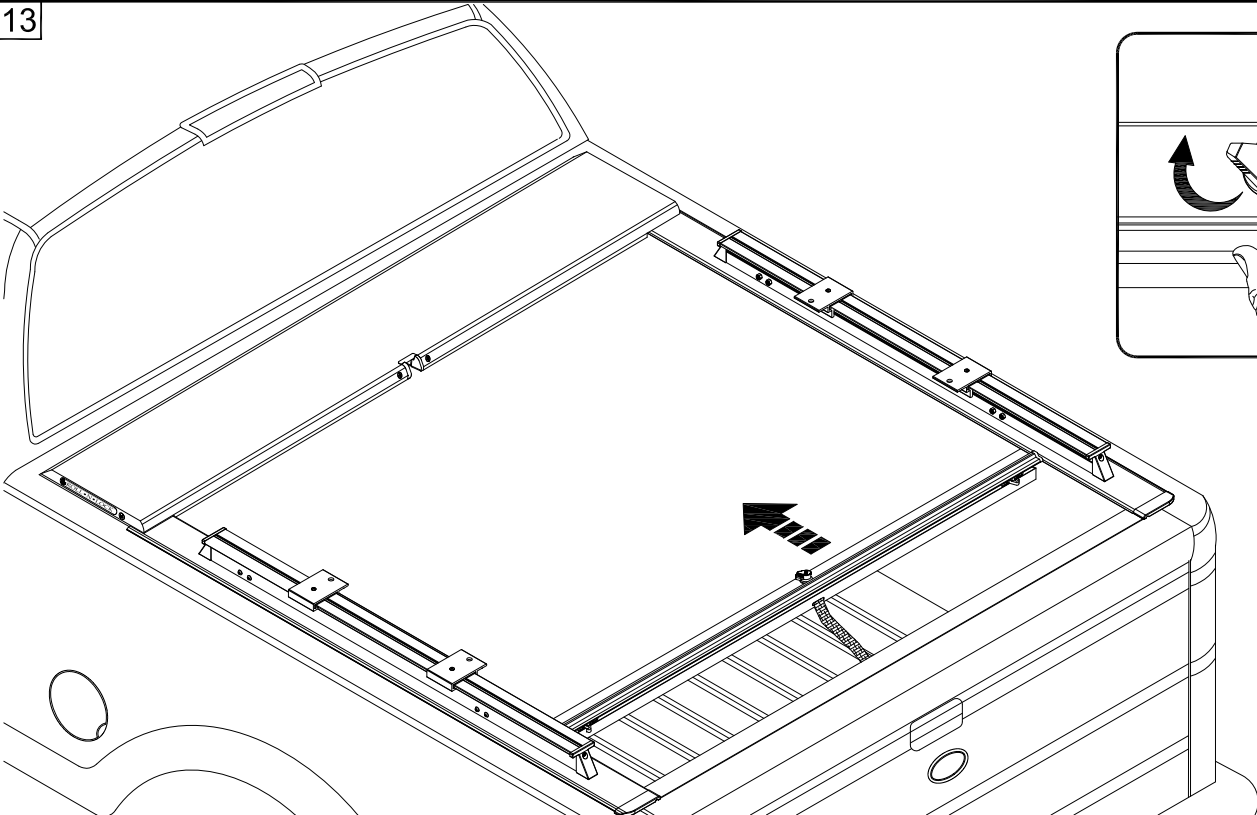
11



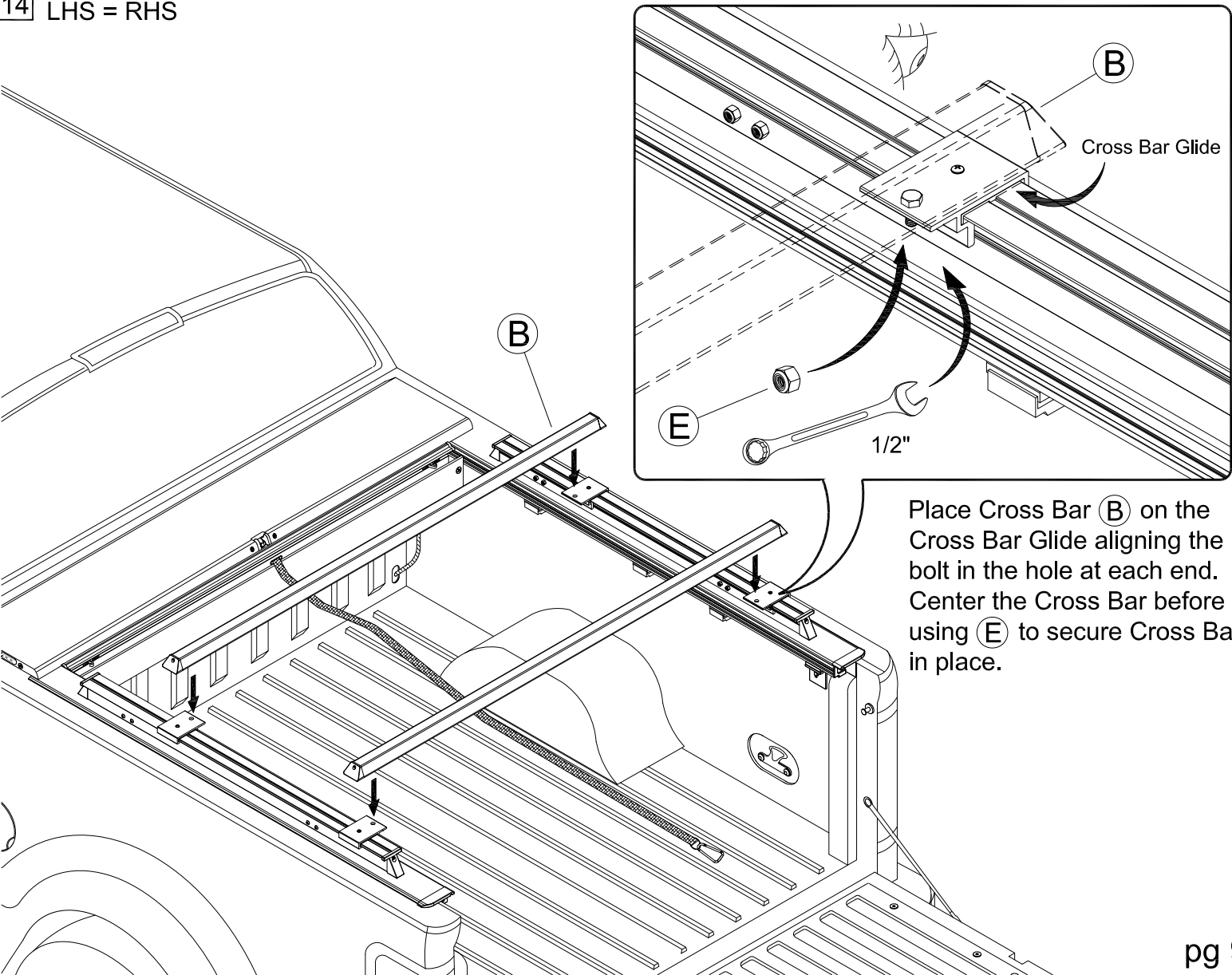
12 LHS = RHS



13

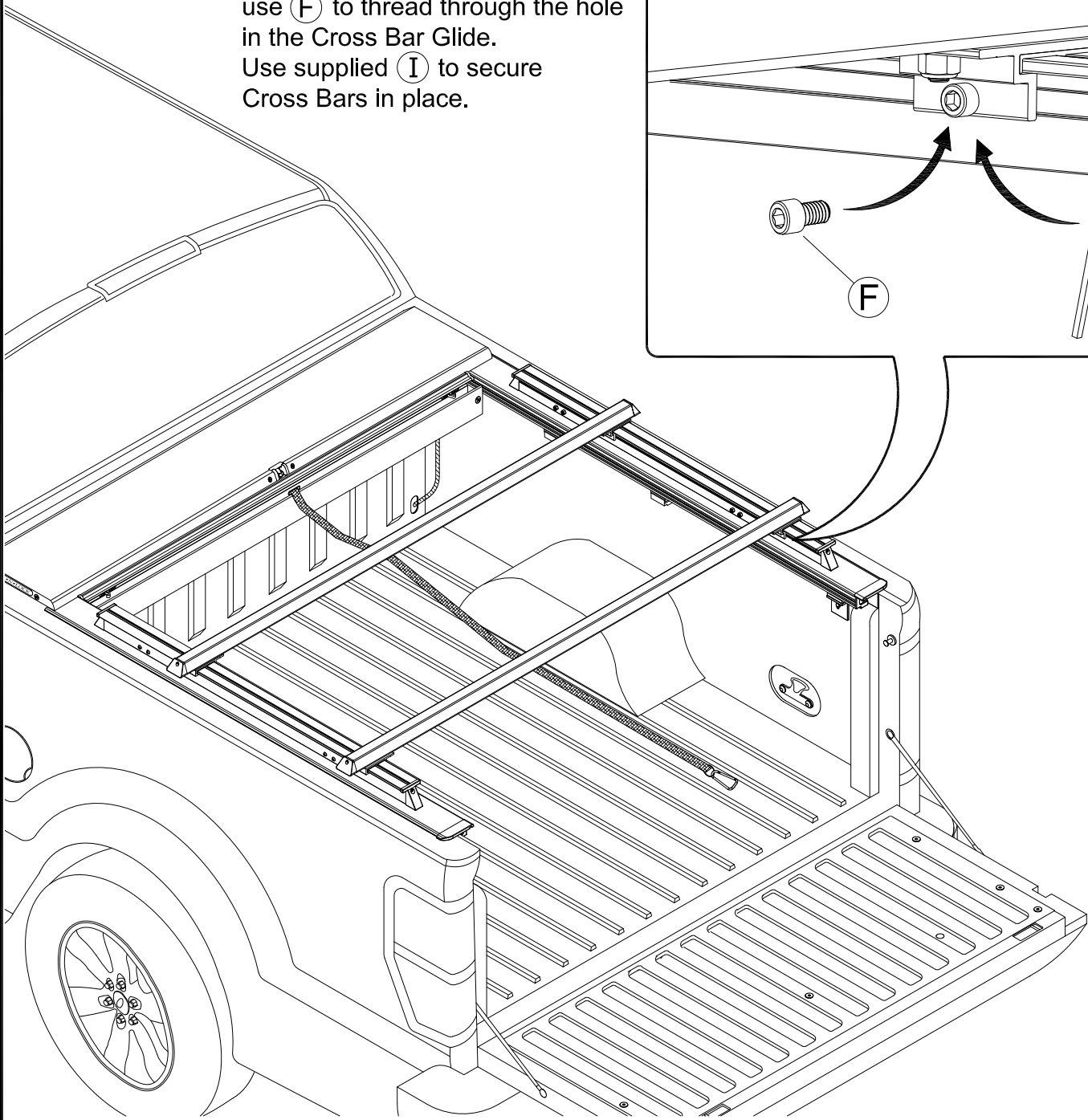
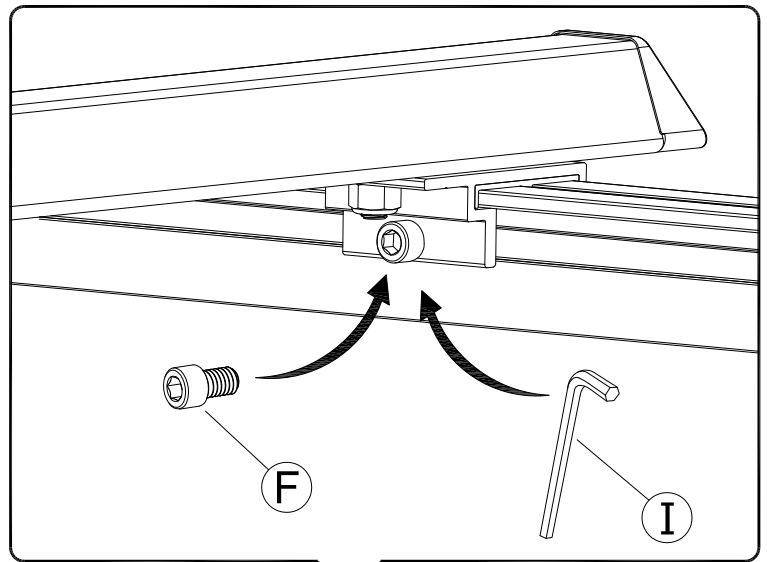


14 LHS = RHS



15 LHS = RHS

Once a desired location for the Cross Bar has been determined use (F) to thread through the hole in the Cross Bar Glide. Use supplied (I) to secure Cross Bars in place.



Any questions please call Customer Service at 800-952-7655  
or email [customerservice@rollnlock.com](mailto:customerservice@rollnlock.com)