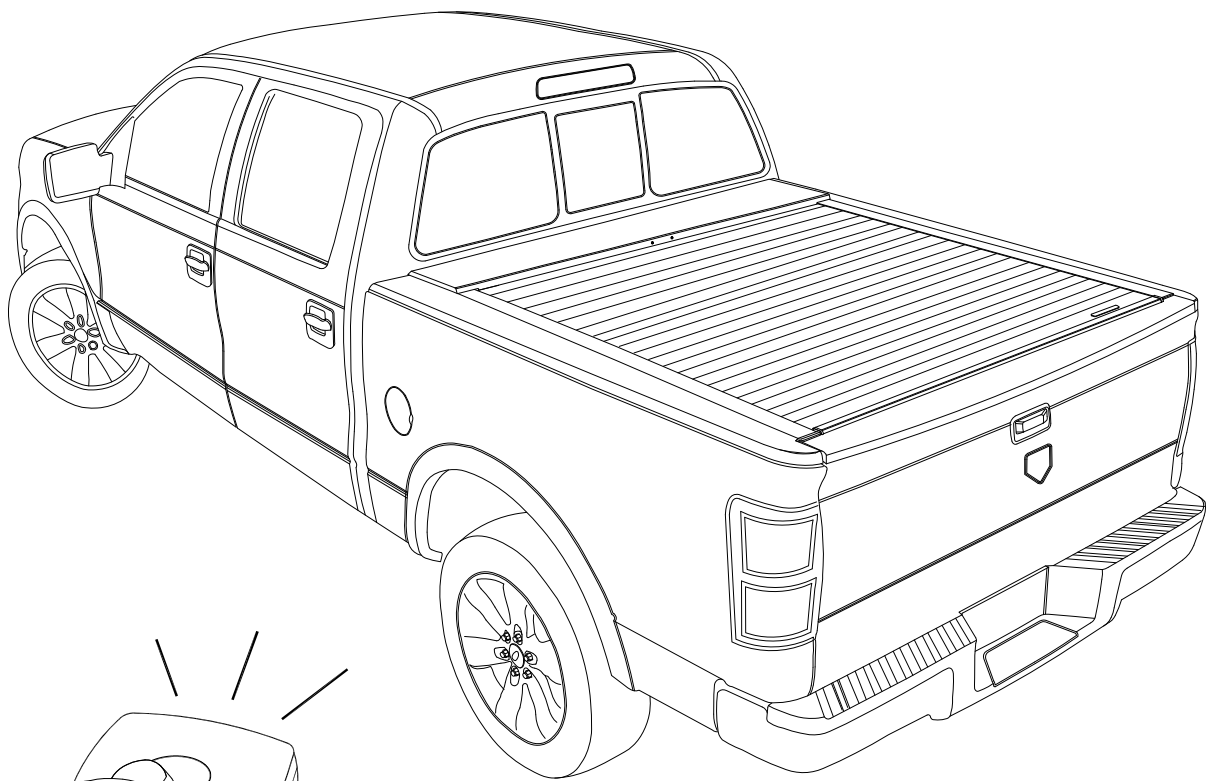




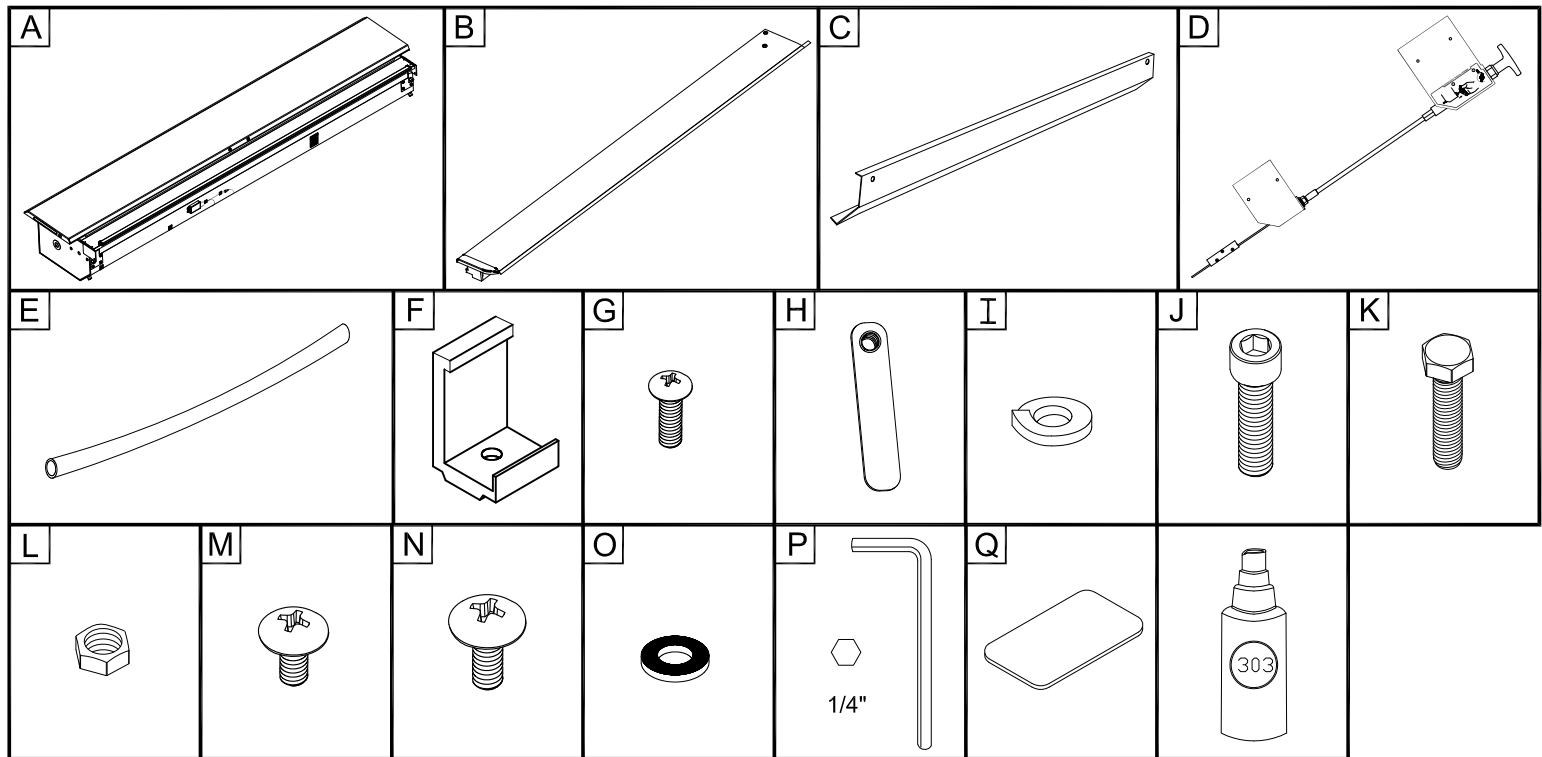
E Series Installation Guide Ram 1500



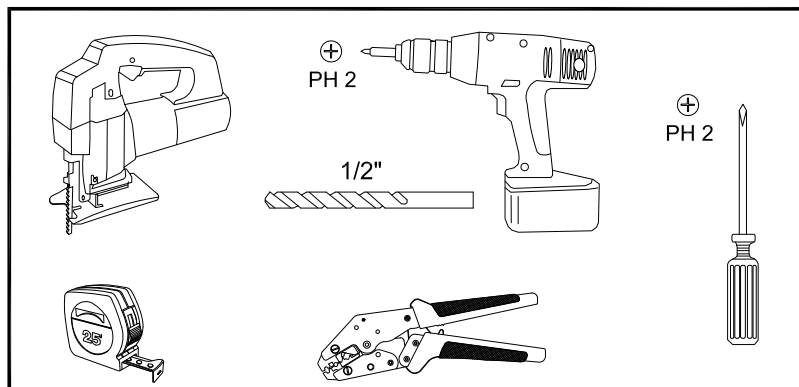
Product Code:
RC447E

Parts List

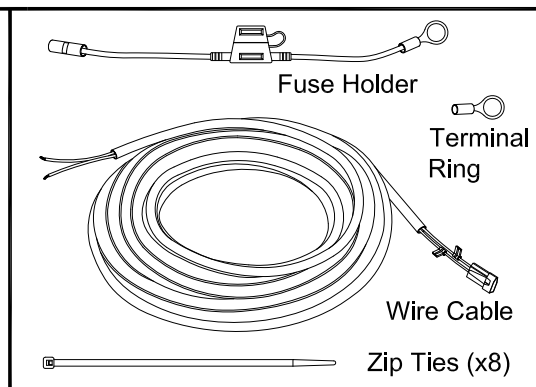
| Item | Part Name | Qty. | Item | Part Name | Qty. | Item | Part Name | Qty. |
|------|----------------|------|------|----------------------|------|------|---------------------|------|
| A | Housing | 1 | G | #10-24 Screw | 6 | M | 1/4" Lid Screw | 2 |
| B | Track | 2 | H | Cargo Nut | 6 | N | 1/4-20 x 3/8" Screw | 4 |
| C | Cargo Shield | 1 | I | 5/16" Lock Washer | 6 | O | Rubber Washer | 4 |
| D | Override Cable | 1 | J | 5/16" x 1" Cap Screw | 6 | P | Allen Wrench (1/4") | 1 |
| E | Drain Tube | 2 | K | 1/4-20 x 1" Bolt | 2 | Q | Stake Hole Cover | 4 |
| F | Bed Clamp | 6 | L | 1/4-20 Hex Nut | 2 | | 303 Vinyl Protector | |



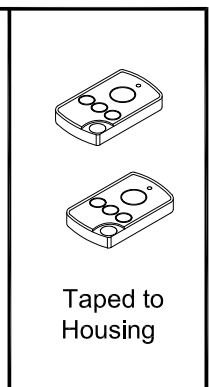
Tools Needed



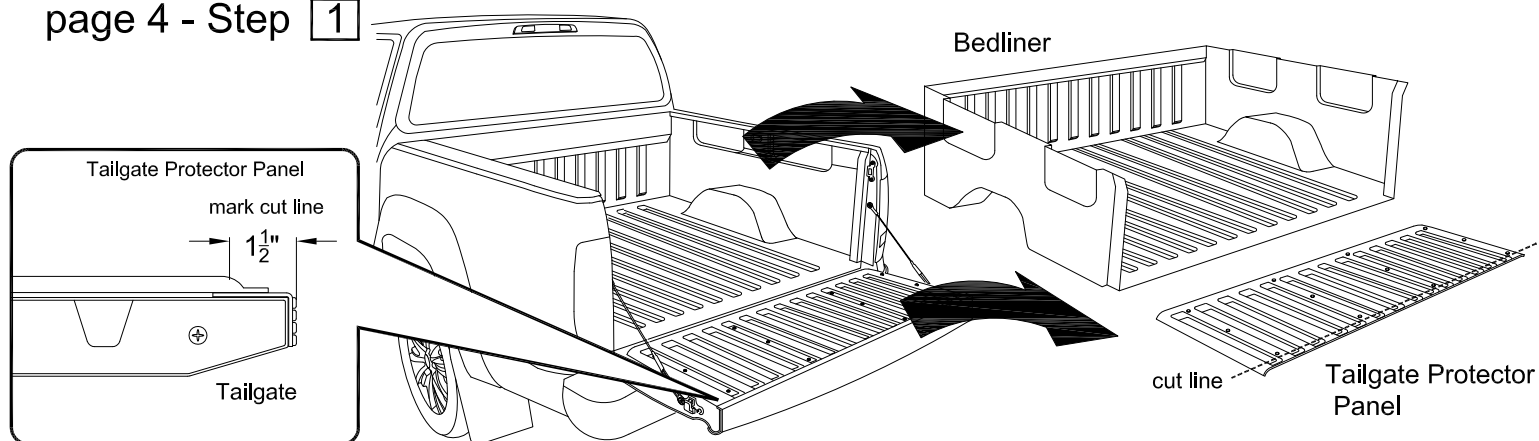
Power Wire / Connectors



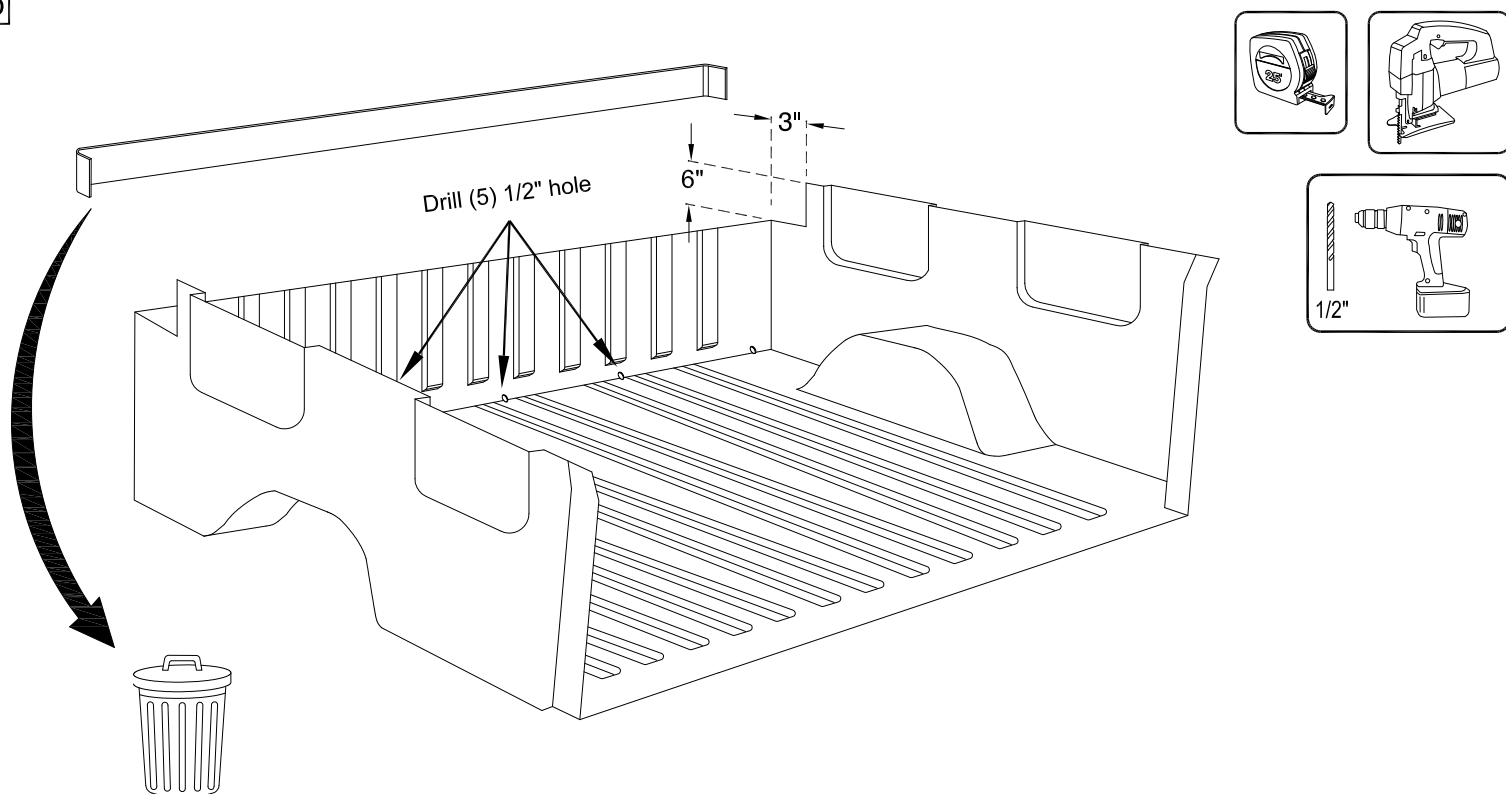
Remotes



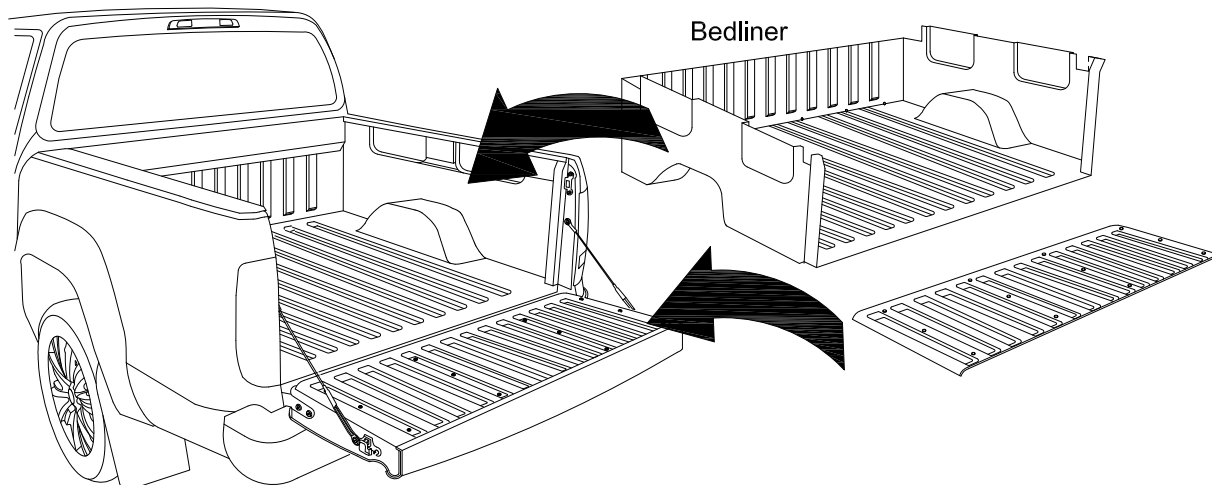
1a If no plastic bedliner present proceed to page 4 - Step 1



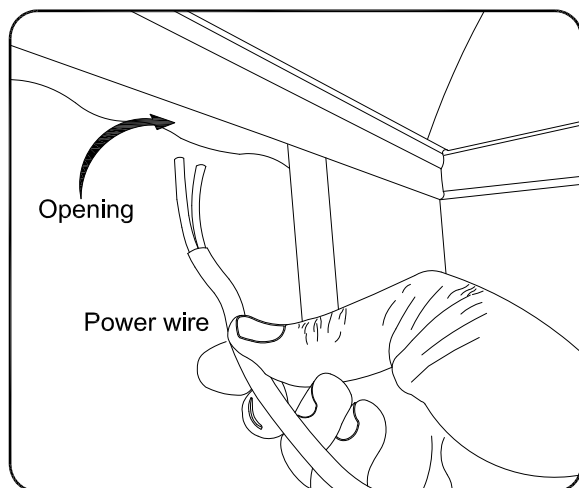
1b



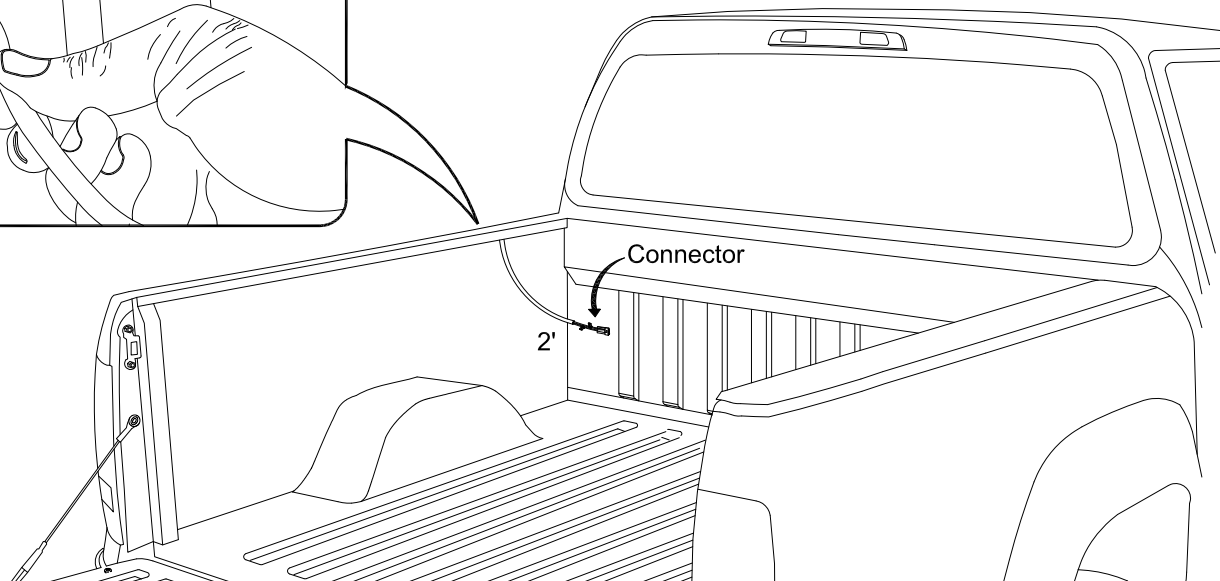
1c



1

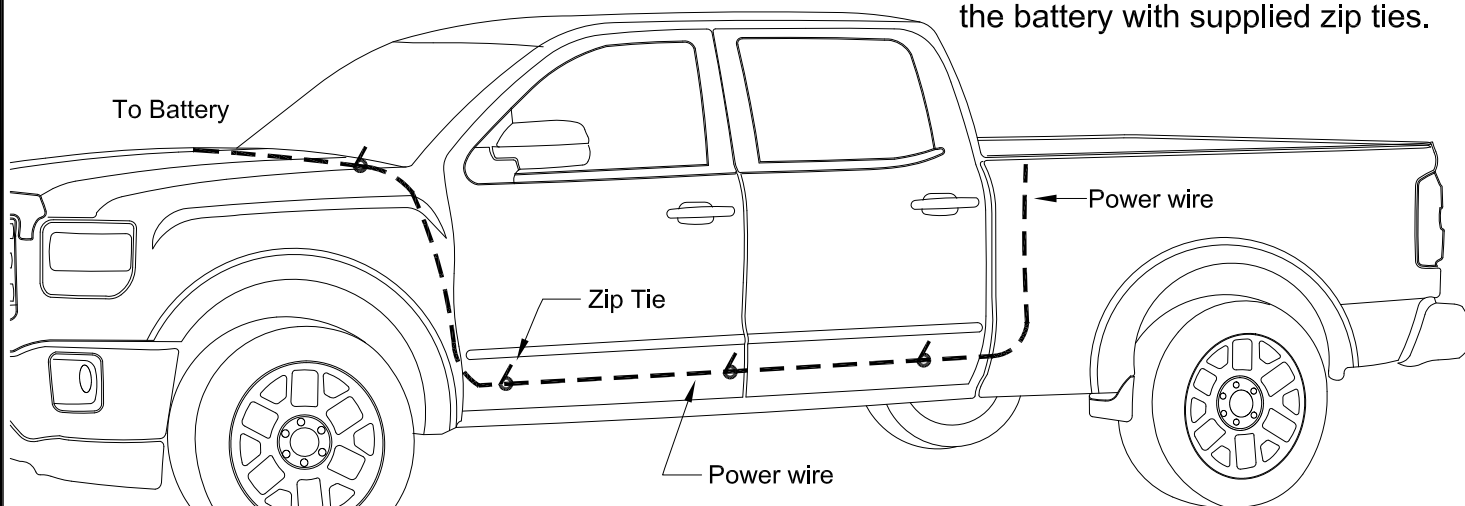


Feed end of power wire through opening on drivers side of truck cap, then down through the side panel to the ground.
Leave 2 feet of power wire in the truck bed.



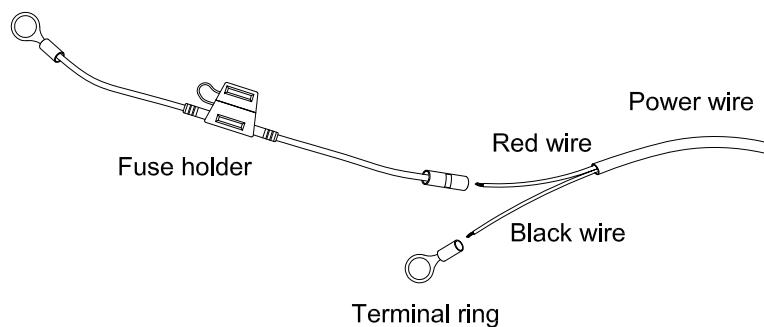
2

Feed power wire under the truck securing to an existing wire harness leading to the battery with supplied zip ties.

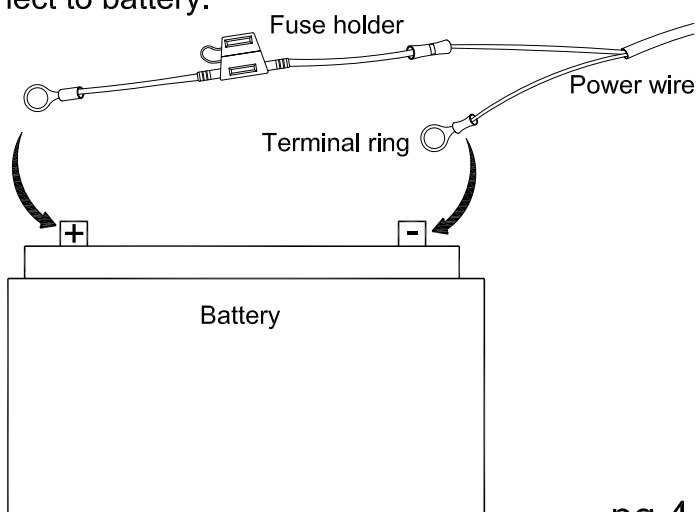


3

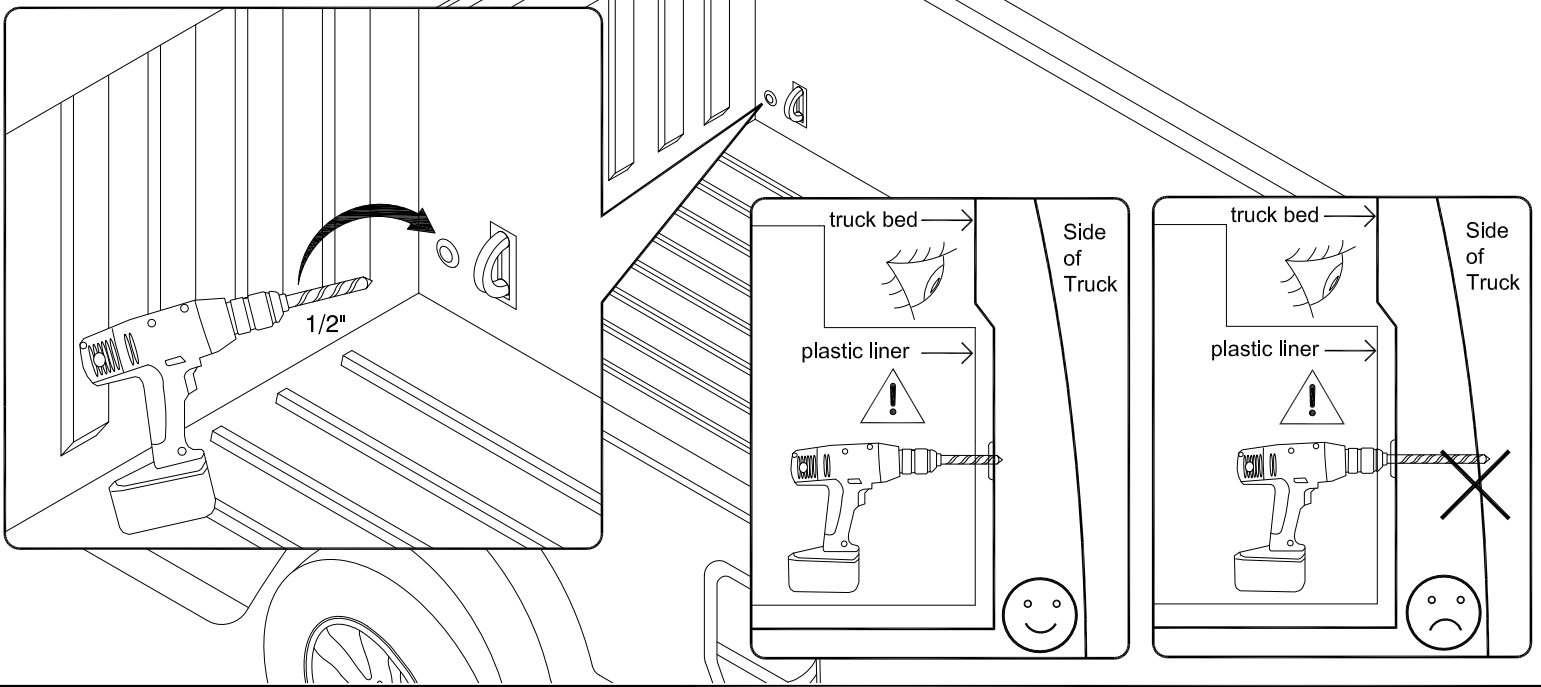
Crimp the fuse holder to the RED wire and the terminal ring to the Black wire.



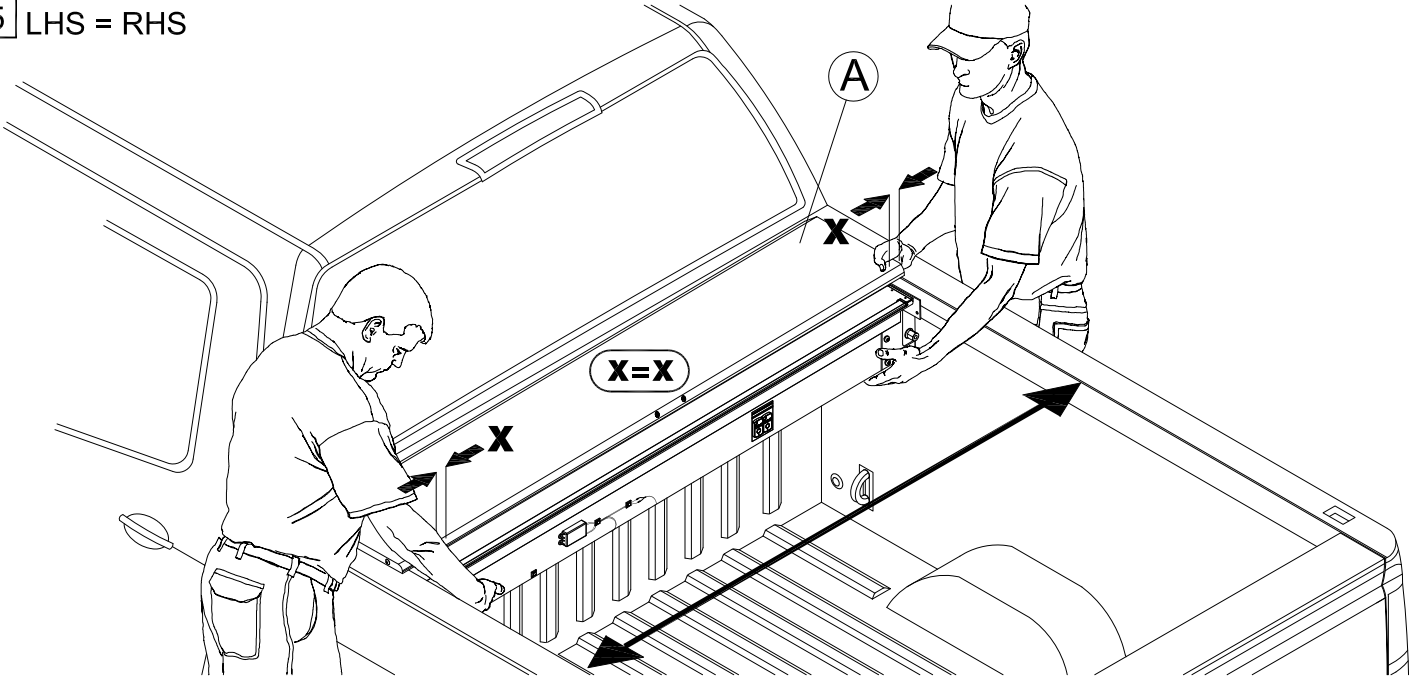
Connect to battery.



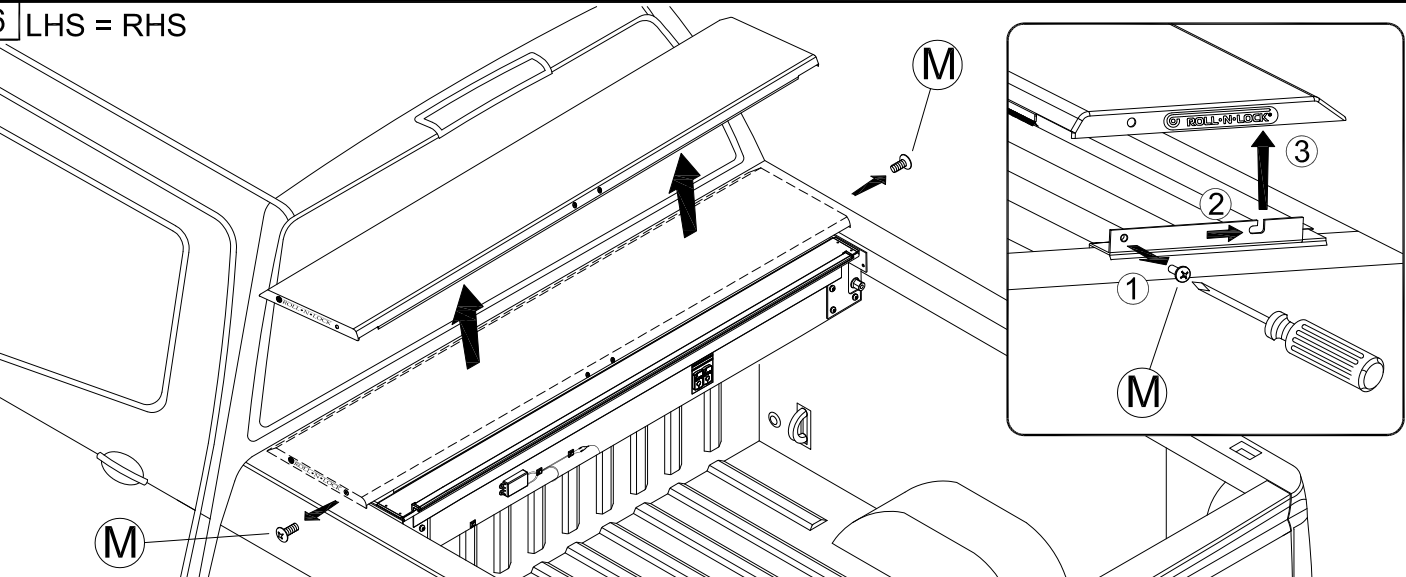
4 LHS = RHS



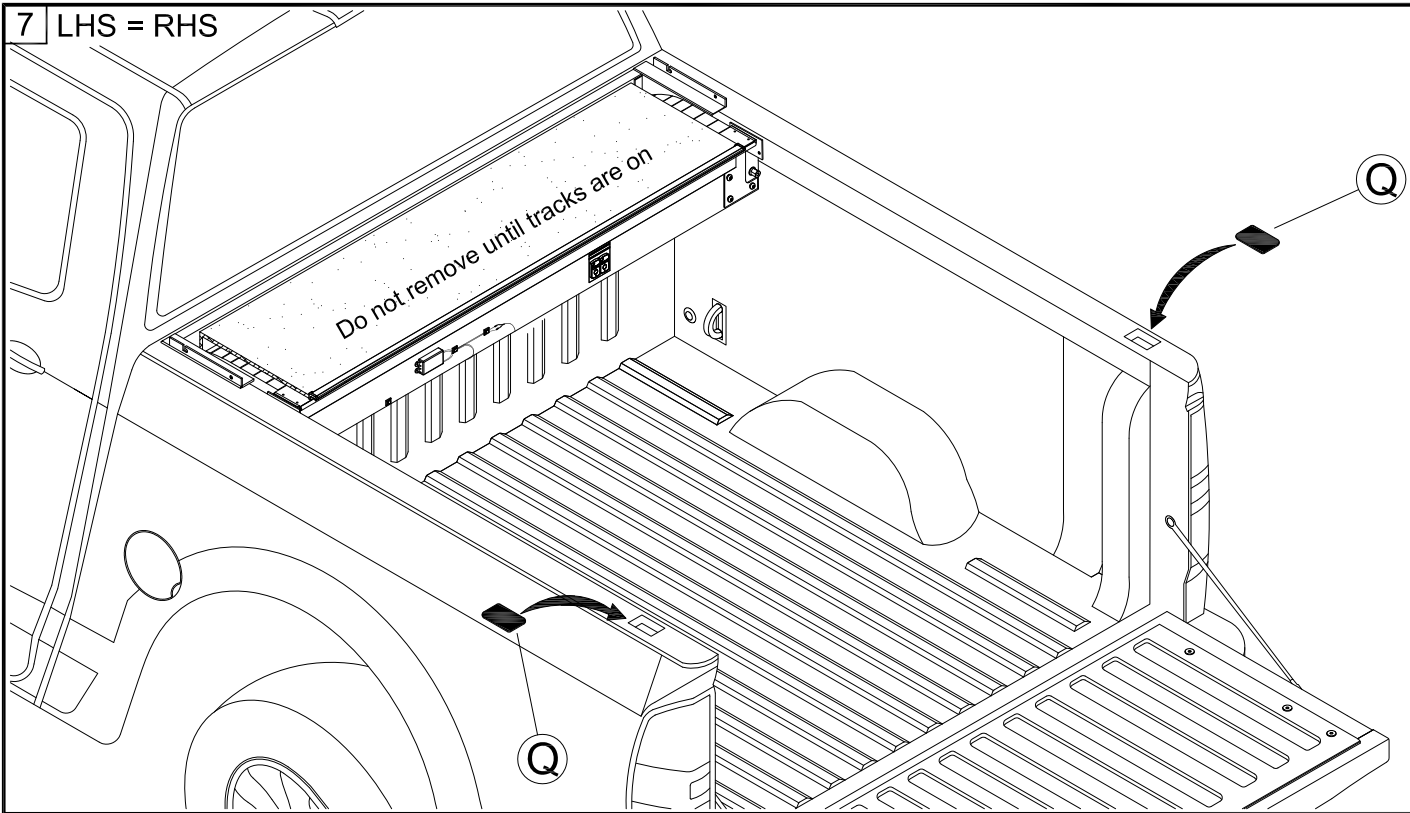
5 LHS = RHS



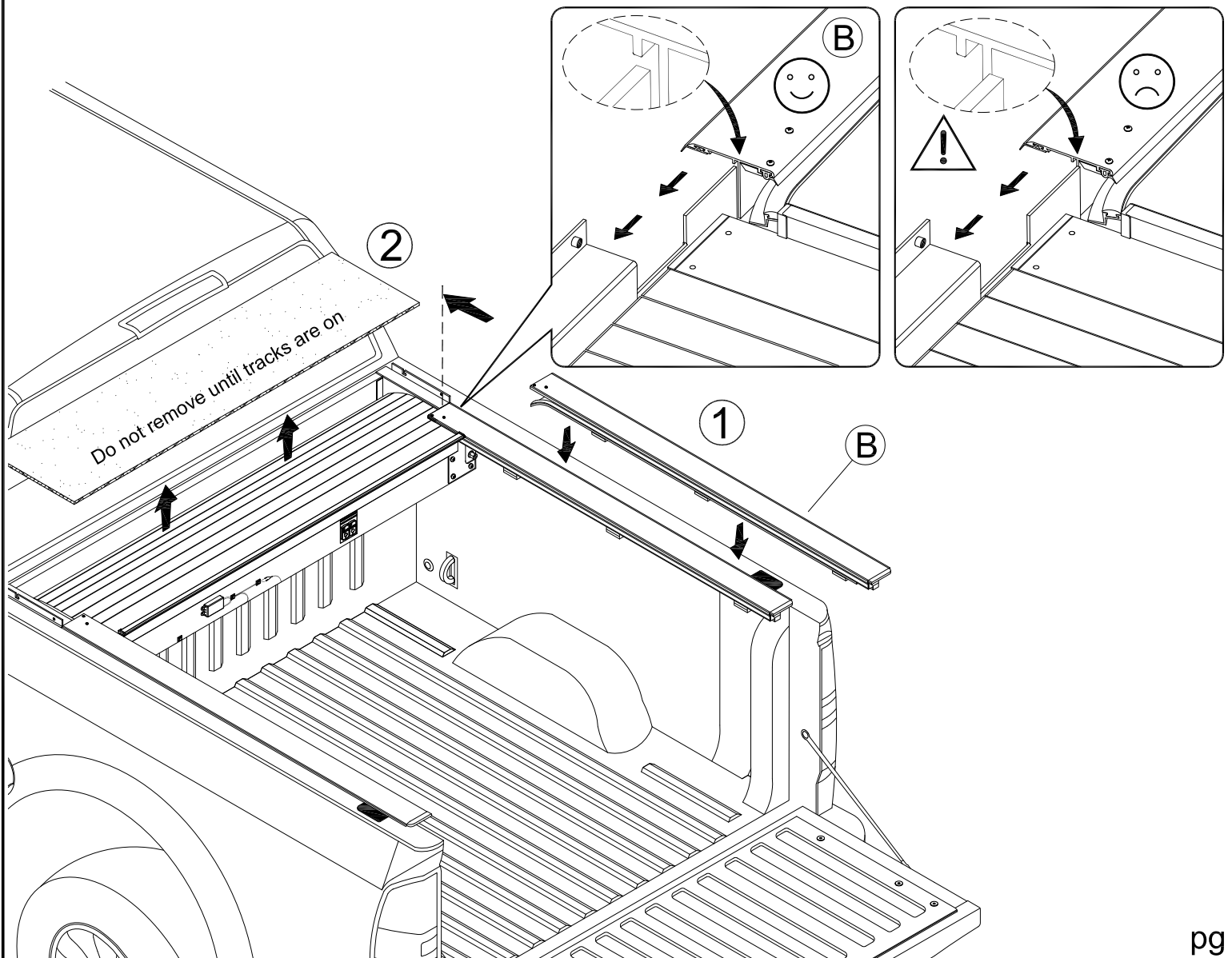
6 LHS = RHS



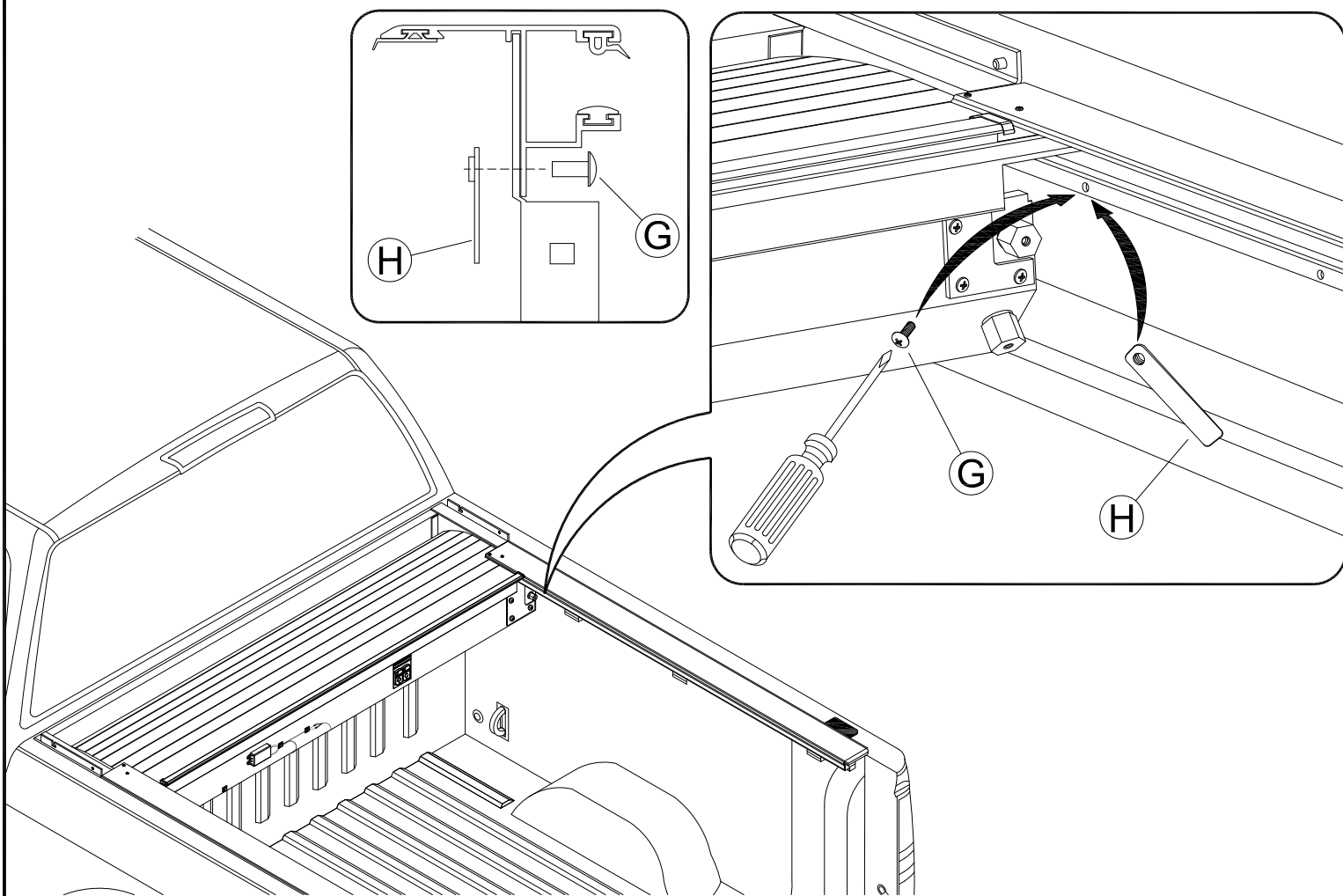
7 LHS = RHS



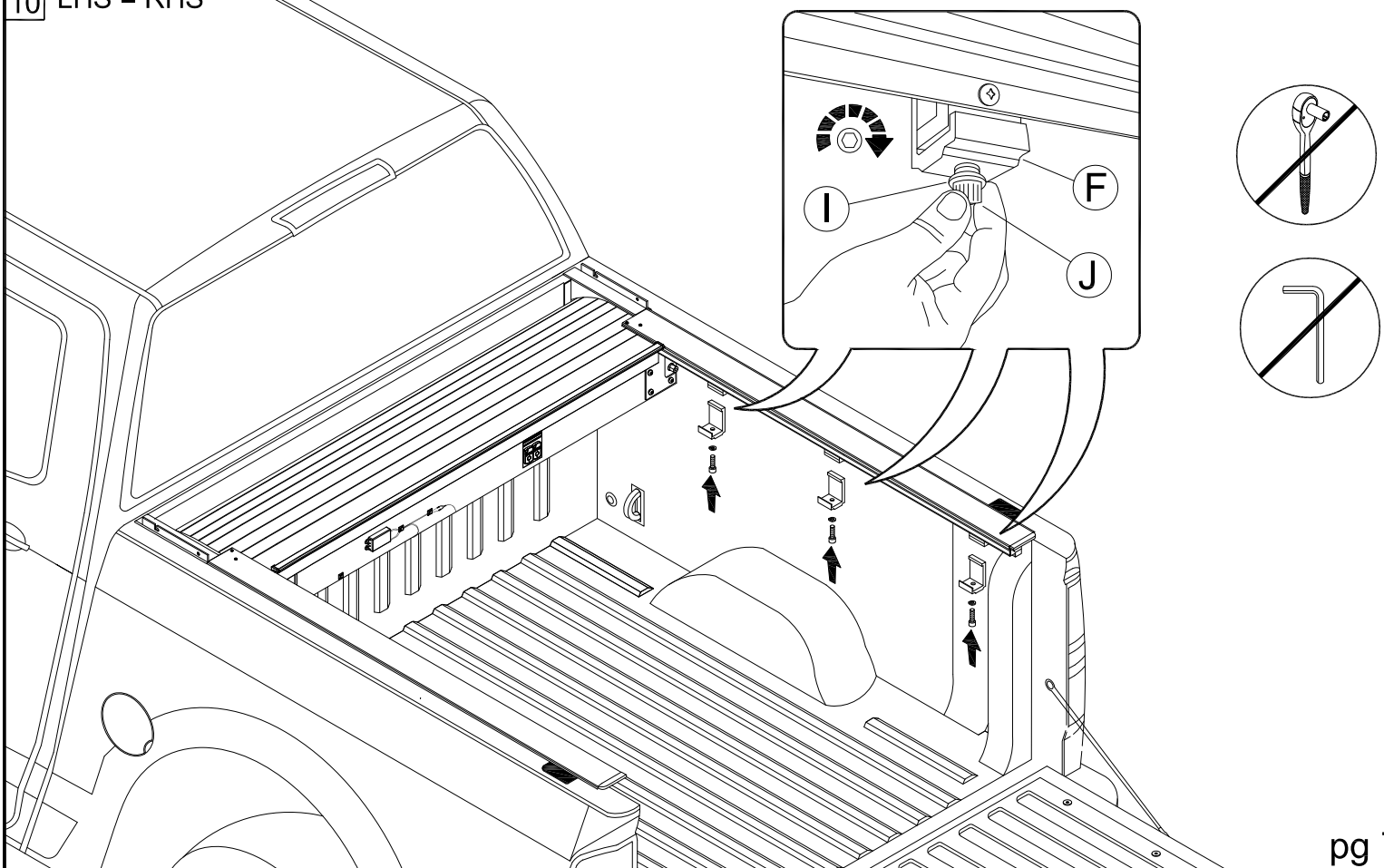
8 LHS = RHS



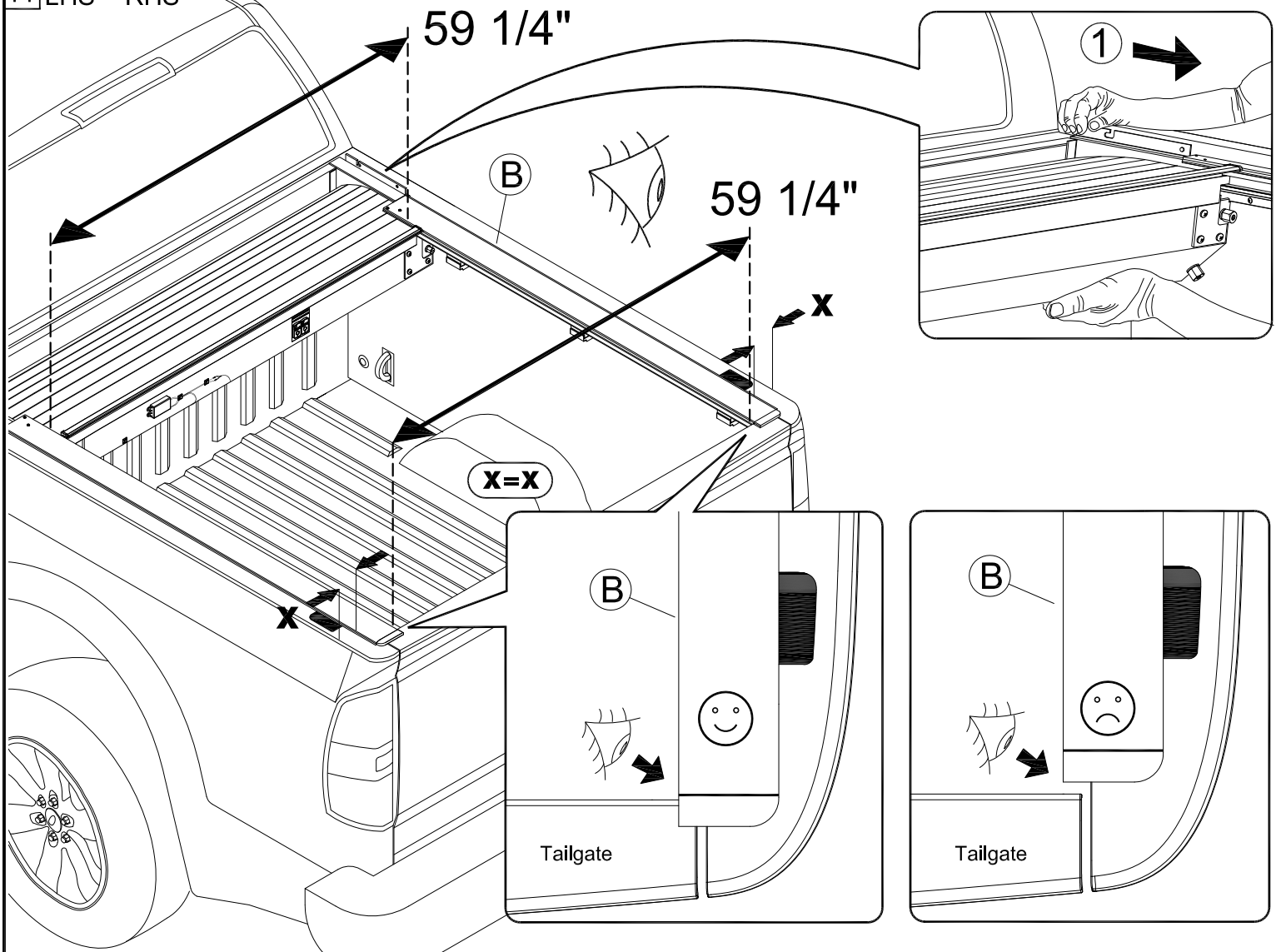
9 LHS = RHS



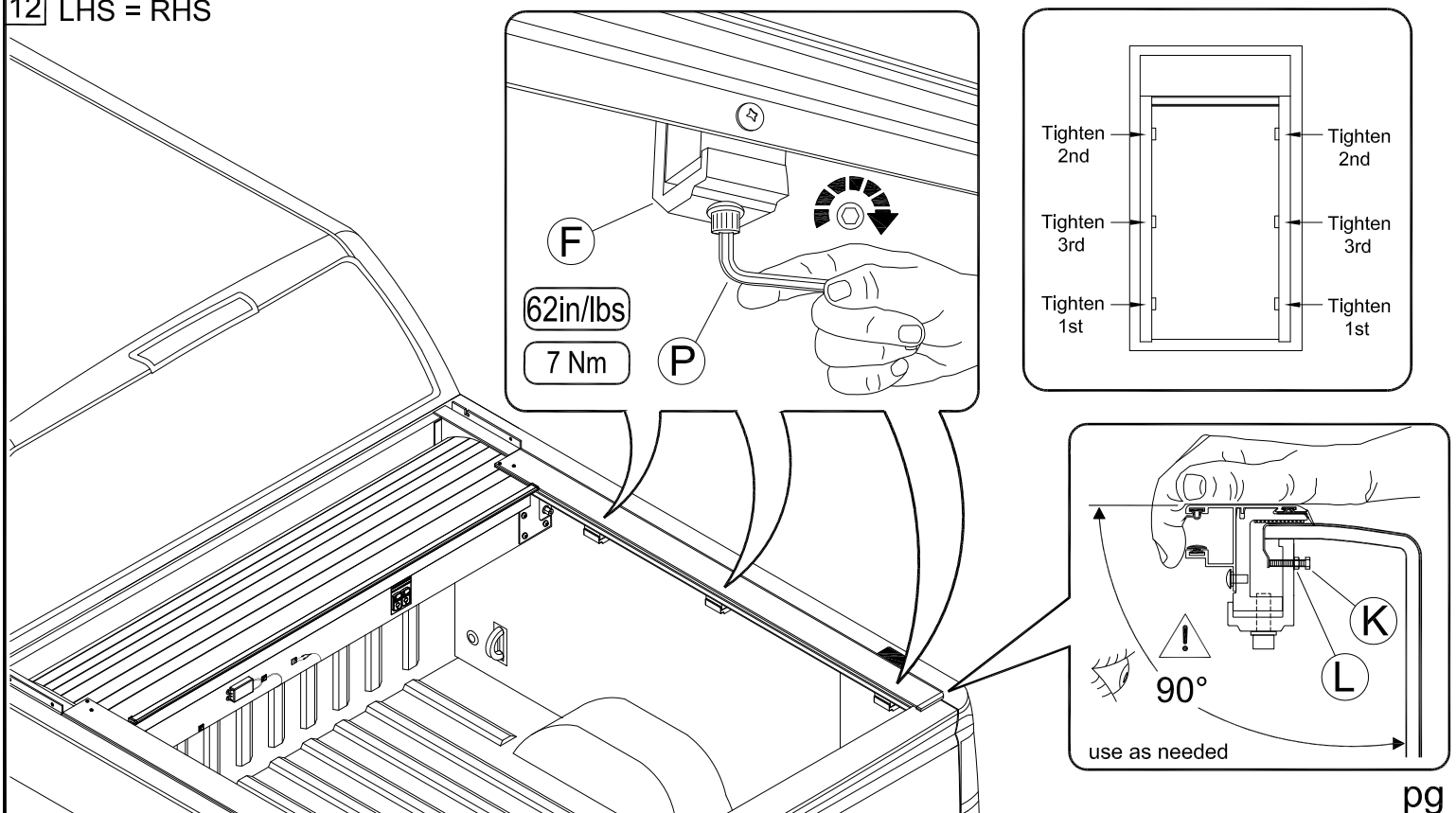
10 LHS = RHS



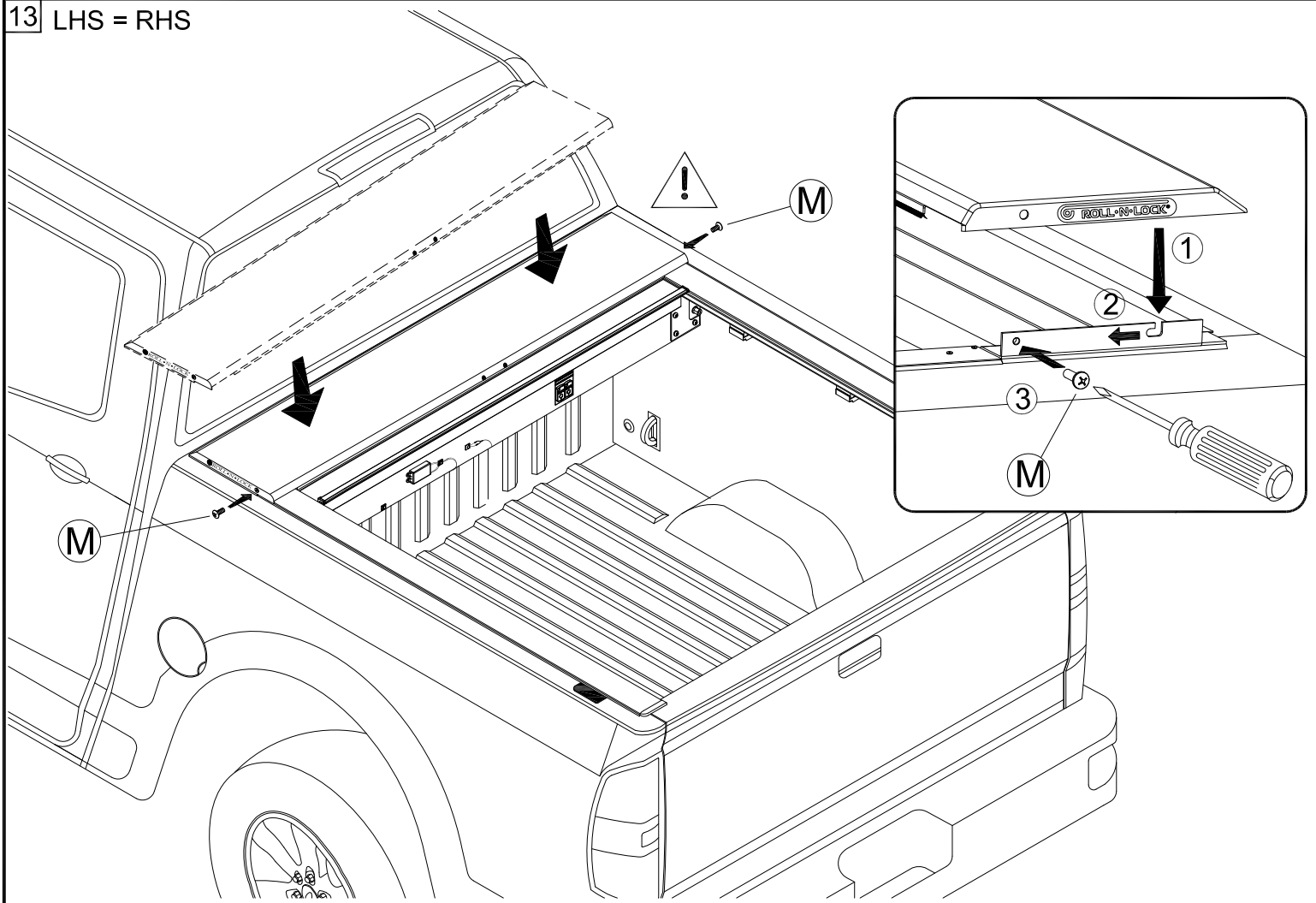
11 LHS = RHS



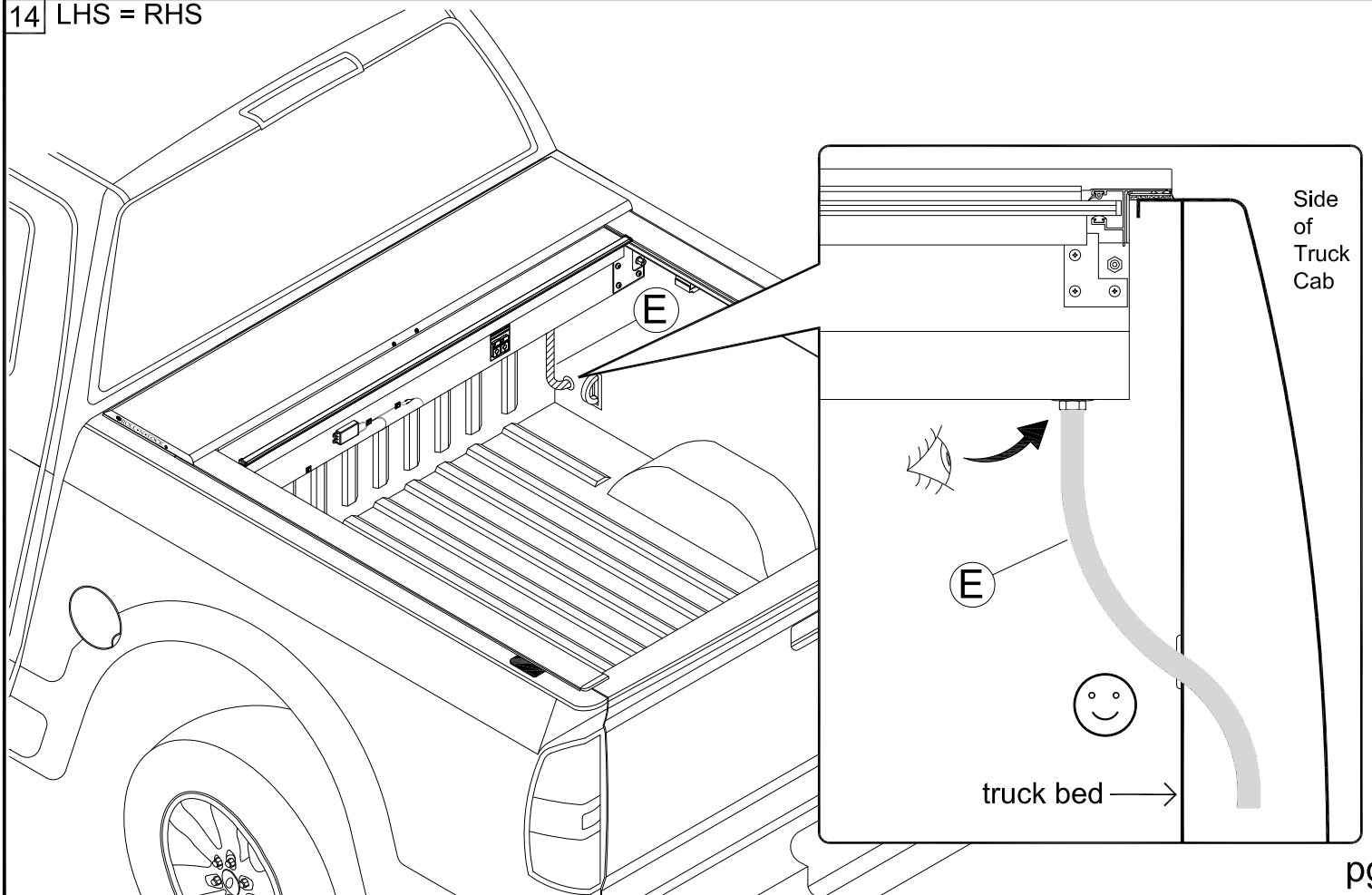
12 LHS = RHS



13 LHS = RHS



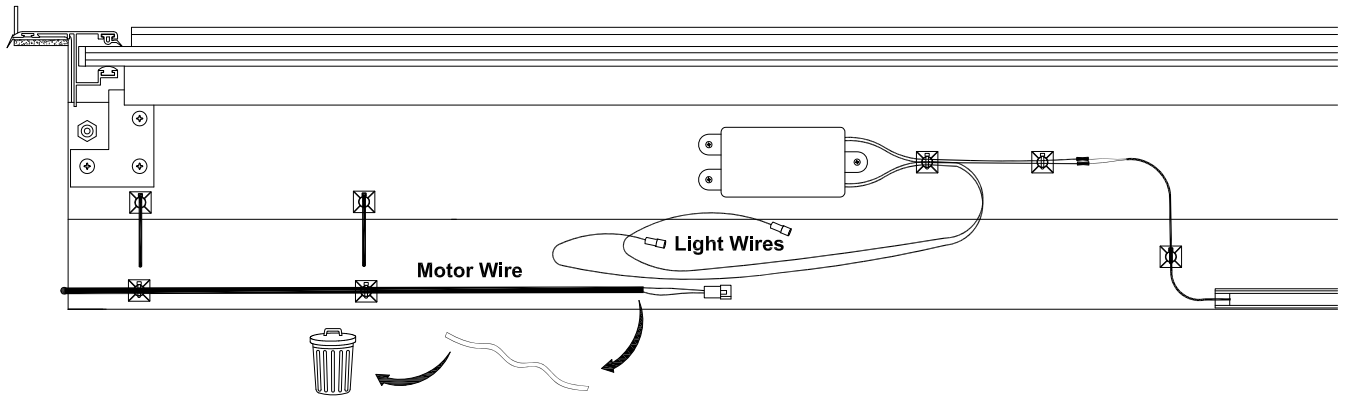
14 LHS = RHS



Powering the unit:

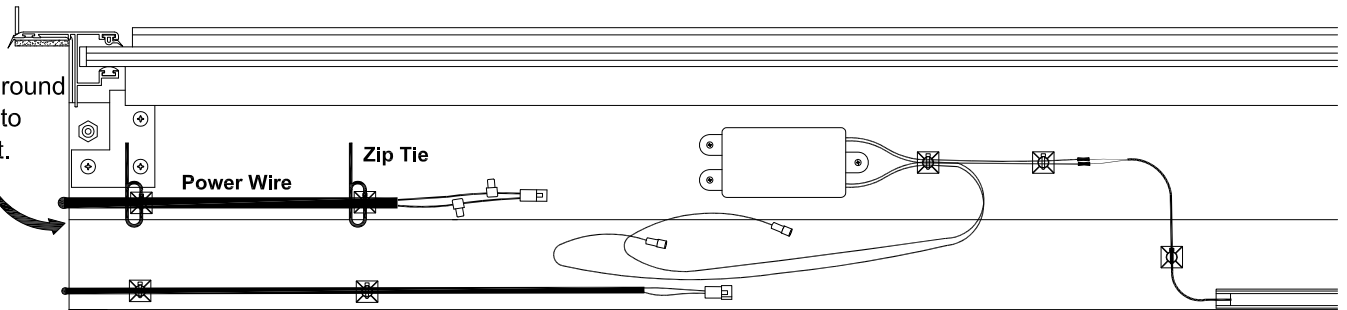
A

Unwrap light wires from motor wire.



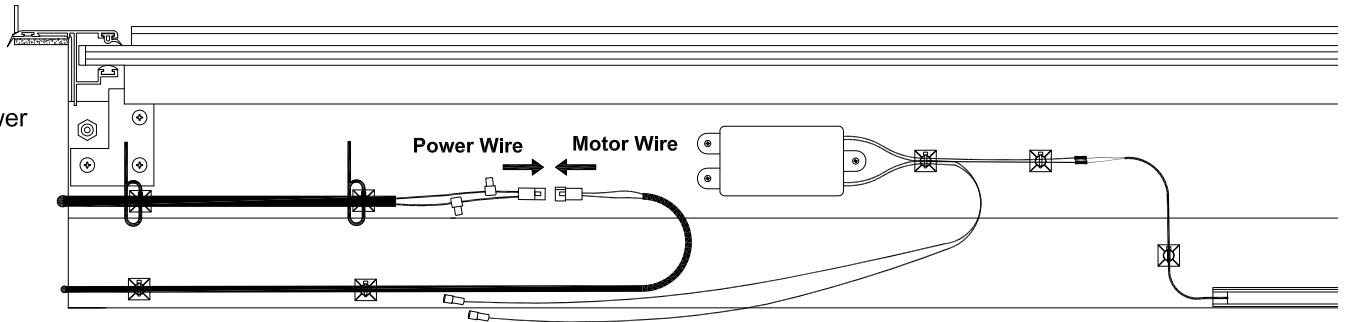
B

Bring power wire around and loosely zip tie to the front of the unit.



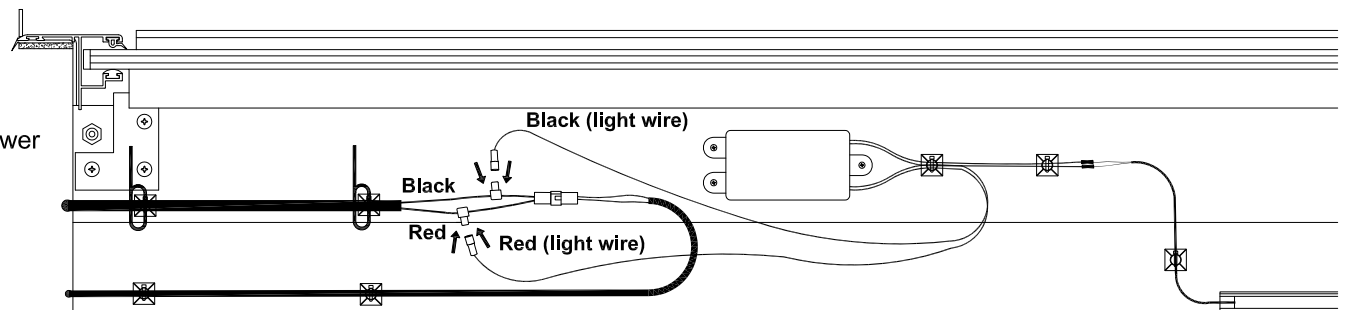
C

Plug motor wire connector into power wire connector.



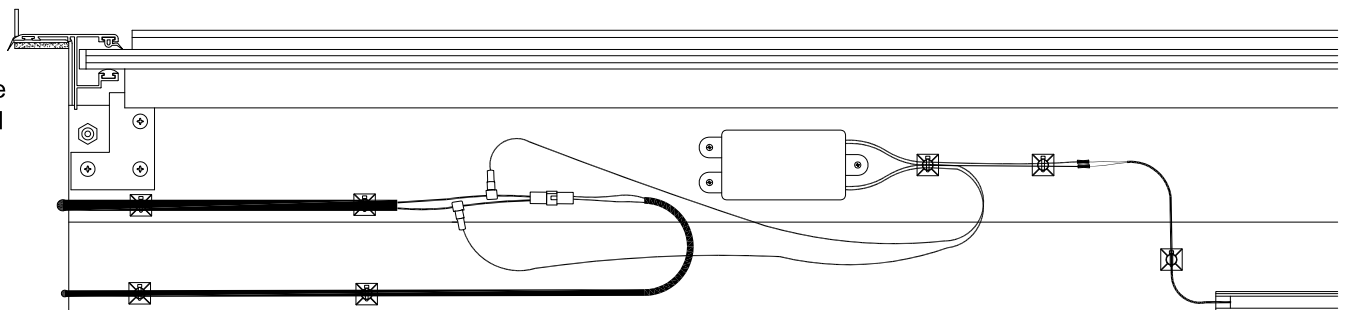
D

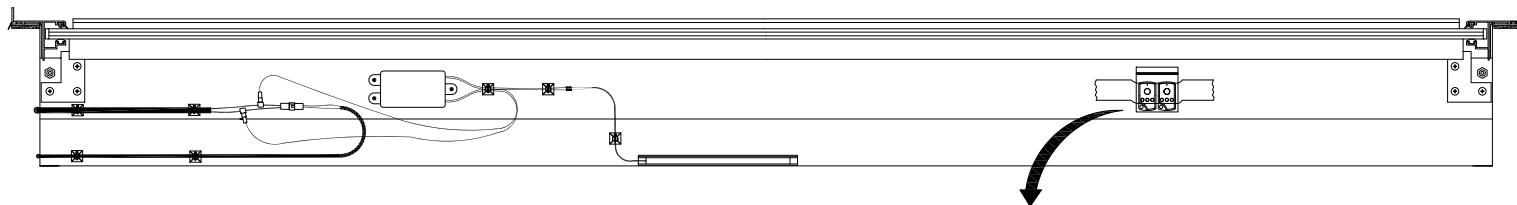
Plug light wire connectors into power wire connectors.



E

Position motor wire tighten zip ties and trim.

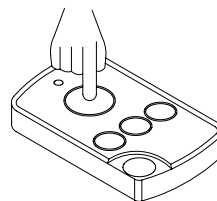




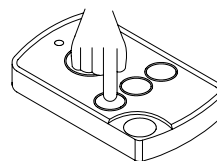
- Remove remotes from housing.

Operating the system:

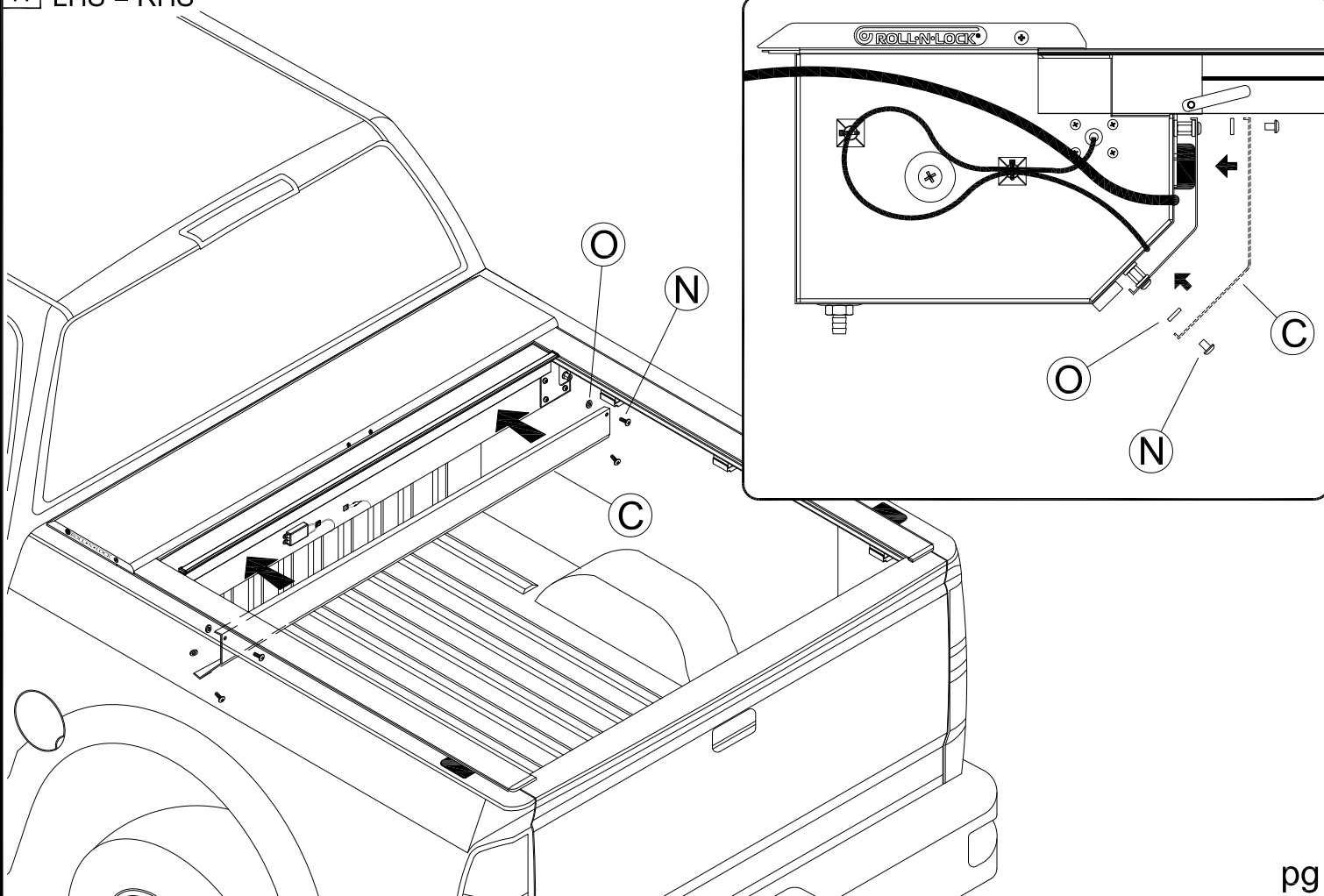
- Push the large button to run cover.
- Push the large button to stop the cover.
- Cover will stop automatically at tailgate and housing.



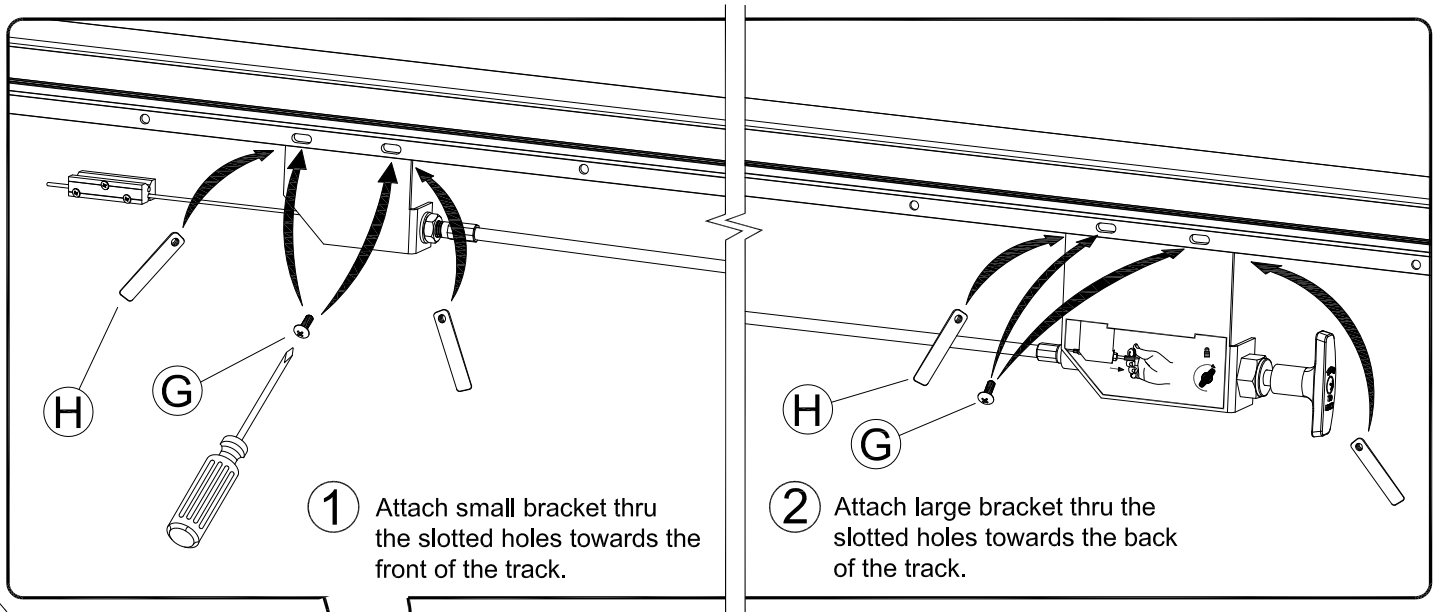
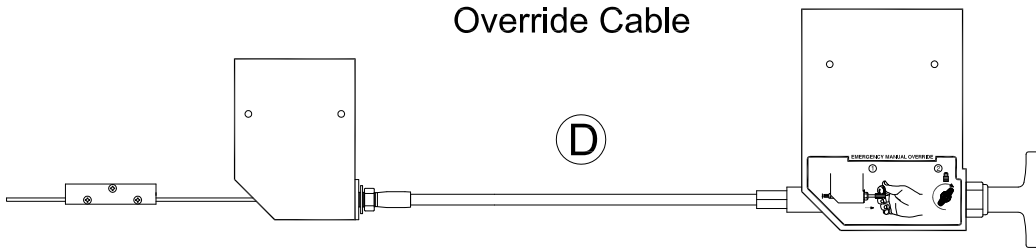
- Push the small left button to turn light on.
- Push the small left button to turn light off.
- Light will automatically turn off in 3 minutes.



17 LHS = RHS

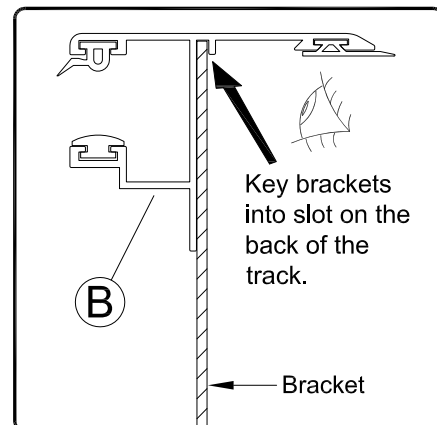
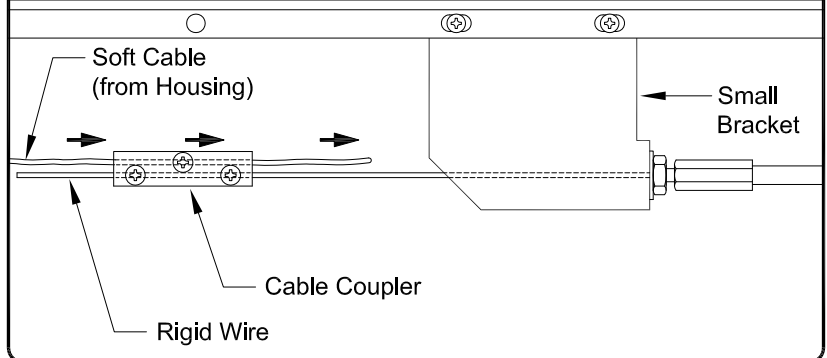


Override Cable



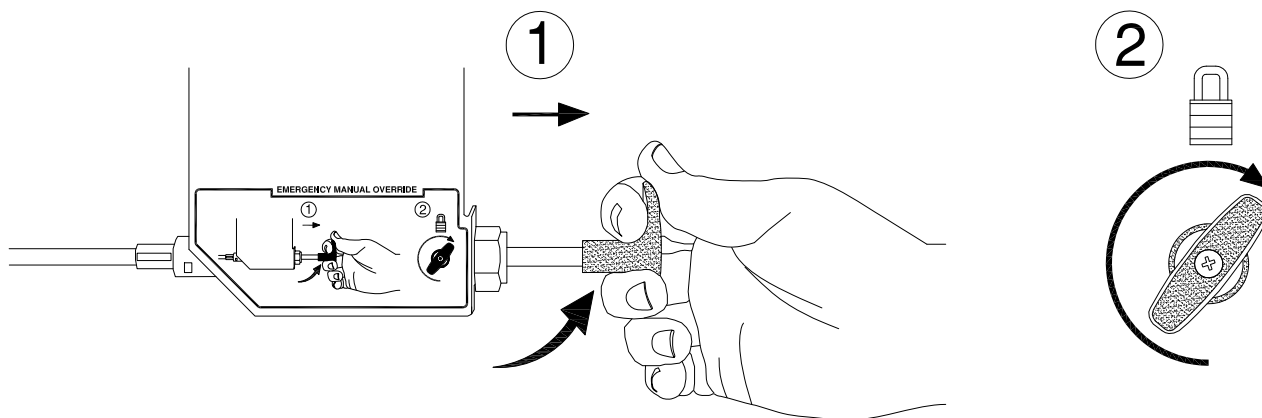
*Passenger side only

- 3** Loosen top screw, pull the soft cable from the housing taught thru the cable coupler and tighten screw.



Operating the override:

- Use only when the cover is not operating remotely.
- Pull the lever and turn to lock in place, the cover will operate manually.
- Unlock the lever and push back to lock cover.



Any questions please call Roll•N•Lock
Customer Service at 800-952-7655 or rollnlock.com