

ROUGH COUNTRY

SUSPENSION SYSTEMS®

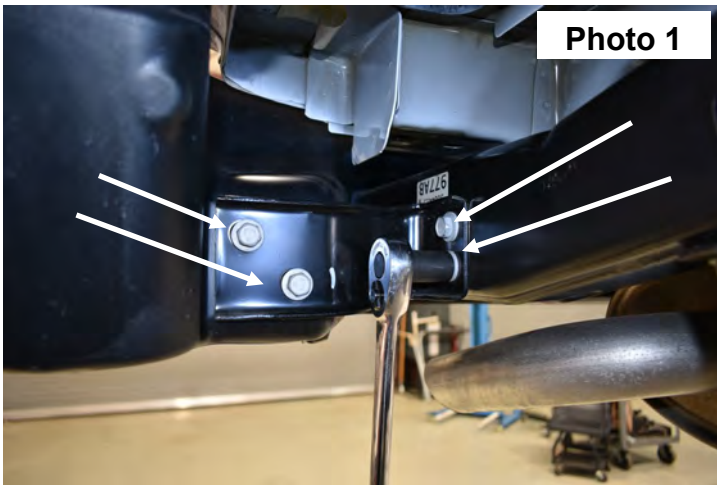
07-18 JEEP JK REAR BUMPER W/TIRE CARRIER

PRIOR TO INSTALLATION

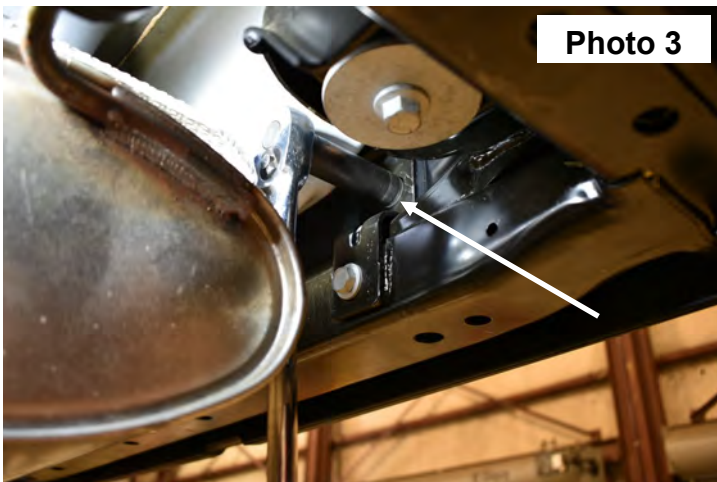
- Make sure the kit is complete and you have read and fully understand these instructions thoroughly before beginning installation.

INSTALLATION INSTRUCTIONS

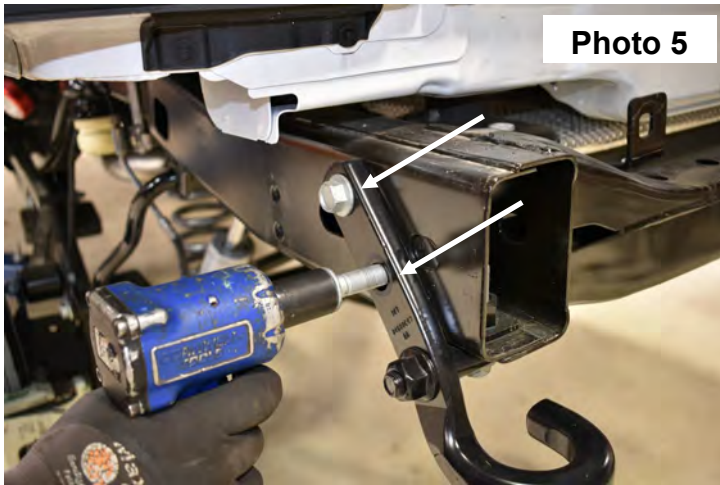
1. Remove the brackets from the stock bumper and frame as shown using a 16mm socket. **See Photo 1 & 2.**



2. Remove the upper bumper bolts (1 each side) as shown in **Photo 3.**
3. Remove the stock bumper from the vehicle. **See Photo 4.**

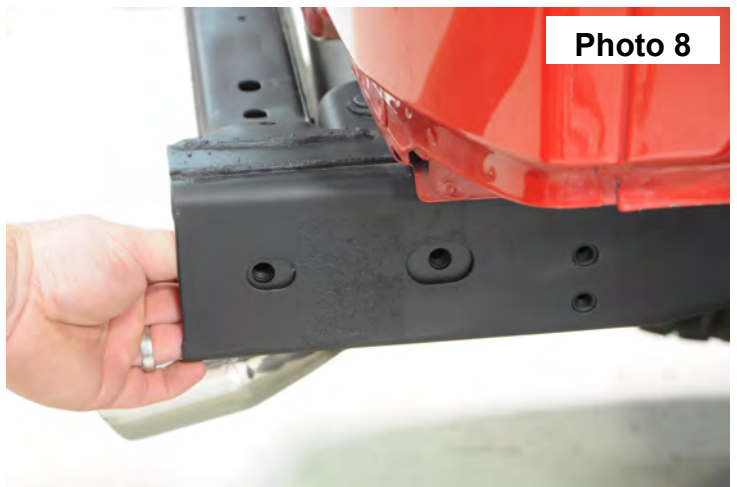


4. Using a 18mm socket, remove the stock tow hook. See Photo 5 & 6.



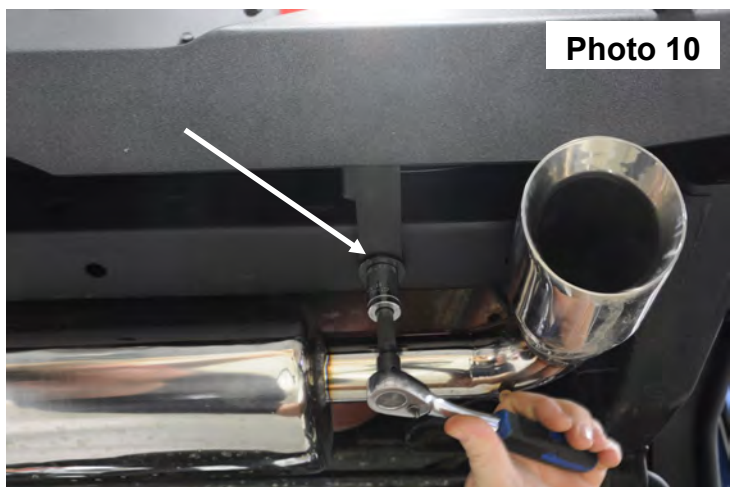
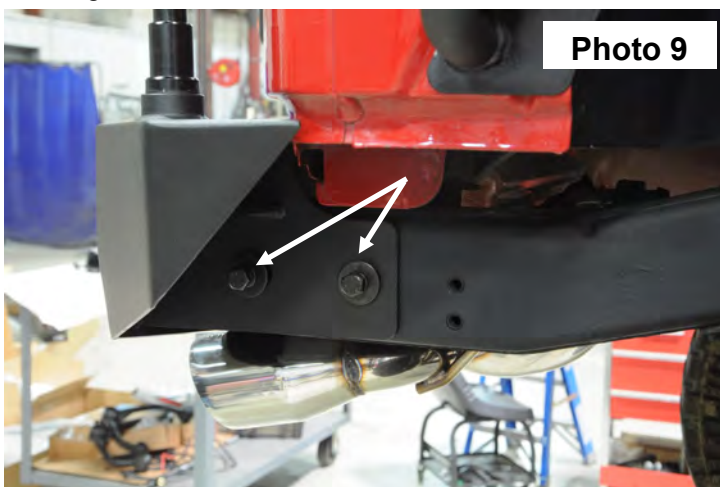
5. Remove the stock insert in the frame. See Photo 7.

6. Position the new bracket in the frame as shown in Photo 8 and align with the stock holes.

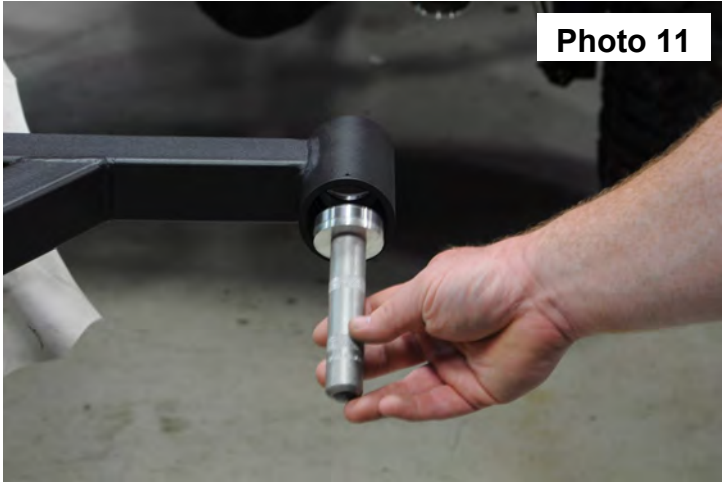


7. Position the bumper on the frame and secure with the 12mm x 40mm bolts, washers and lock washers. See Photo 9.

8. Install the supplied 12mm x 100mm bolts, flat washers, lock washers and nuts in the lower mounts. See Photo 10. Tighten using a 18mm socket and wrench.



9. Install the bearing races in the carrier as shown in **Photo 11** with a bearing tool or equivalent.
10. Grease the tire carrier lower bearing and install in the tire carrier. **See Photo 12.**



11. Install the supplied washer beside the bearing as shown. **See Photo 13.**
12. Gently tap on the edge of the in seal to install the mount. **See Photo 14.**



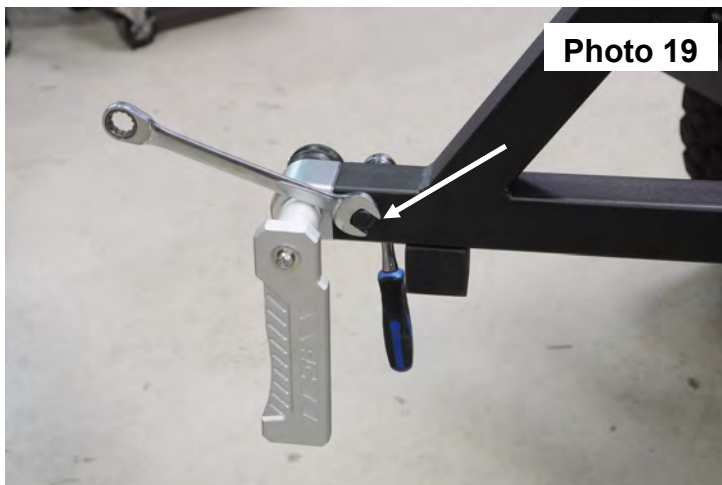
13. Lightly grease the stub shaft on the bumper and place the tire carrier on the stub shaft on the bumper. Grease and install the upper bearing. **See Photo 15.**
14. Install supplied washer as shown. **See Photo 16.**



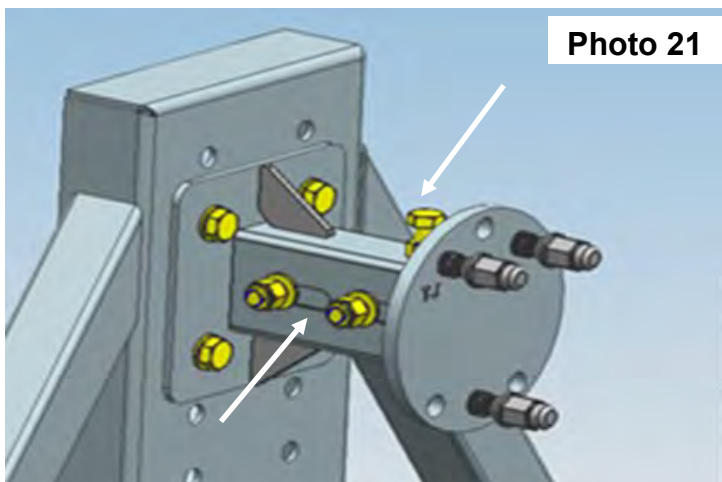
15. Install the supplied castle nut, cotter pin and set screw and install cap. Tighten castle nut with a 36mm socket. **See Photo 17 & 18.**



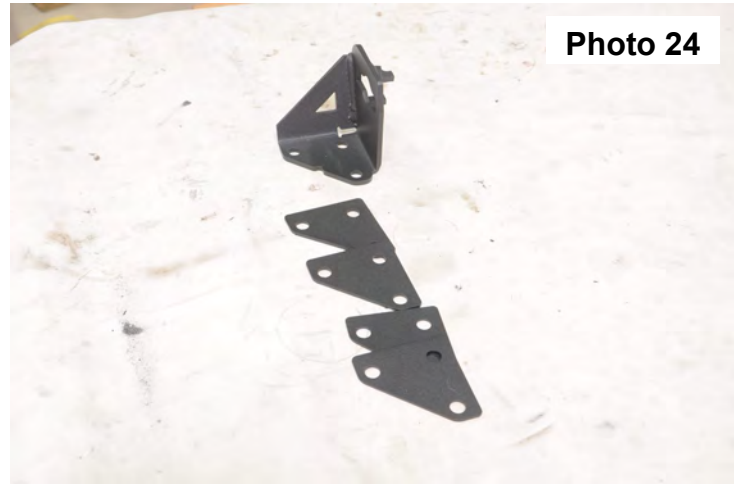
16. Install the handle assembly in the carrier and secure with the supplied 10mm x 65 bolt, washers and lock nut. Tighten with a 17mm wrench. **See Photo 19.**
17. The wheel mount has two bolt patterns included. Match the bolt pattern bracket up with the wheel and install the supplied wheel studs. **See Photo 20.**



18. Install the base mount on the carrier to accommodate tire size and tighten using a 18mm socket. Install wheel mount bracket with the supplied 12mm x 80mm bolts, flat washers and lock nuts. Install 12mm x 35mm bolt and nut on top of the carrier mount. Do not tighten at this time. **See Photo 21.**
19. Install the tire/wheel on the carrier and adjust the wheel mount bracket to bring in the tire/wheel firmly against the carrier. After adjusting, tighten 12mm x 35mm and 80mm bolts using a 18mm wrench and socket. **See Photo 22.**



20. With the tire/wheel installed, swing the carrier to the bumper and check the spacing between the latch bracket and the carrier handle. **See Photo 23.** This kit includes several shim plates to accommodate different tire/wheel weights. **See Photo 24.**



21. Select the combination of shim thickness needed to allow the latch to operate freely and secure the bracket and shims with the supplied 10mm x 40mm Bolts, washers and lock nuts. **See Photo 25 & Photo 26.**



22. Install supplied d-rings in the d-ring mounts. **See Photo 27.**





Kit Contents:

Driver Frame mount Bracket
Pass Fame Mount Bracket
Rear Bumper

Poly Bag Containing:

10-12mm Lock Washers
20-12mm Flat Washers
2-12mm Lock Nut
6-12MM Nuts
2-12mm x 80mm Bolts
4-12mm x 40mm Bolts
2-12mm x 100mm Bolts
3-Wheel nuts
8-10mm Flat Washers
1-8mm Hex Screw
4-10mm Lock Nuts
1-24mm Hex Nut
3-10mm x 40mm Bolts
1-10mm x 65mm Bolt
5-12mm x 35mm Bolts
1-Cotter Pin
3-1/2" x 20 Wheel Studs

Tools Required:

16mm Socket/Wrench
18mm Socket/Wrench

By purchasing any item sold by Rough Country, LLC, the buyer expressly warrants that he/she is in compliance with all applicable, State, and Local laws and regulations regarding the purchase, ownership, and use of the item. It shall be the buyers responsibility to comply with all Federal, State and Local laws governing the sales of any items listed, illustrated or sold. The buyer expressly agrees to indemnify and hold harmless Rough Country, LLC for all claims resulting directly or indirectly from the purchase, ownership, or use of the items.

