

ROUGH COUNTRY

SUSPENSION SYSTEMS®

Toyota Tundra 2014-2018 Rear Bumper

Thank you for choosing Rough Country for all your vehicle needs.

Please read instructions before beginning installation. Check the kit hardware against the kit contents shown below. Be sure you have all needed parts and know where they go.

If question exist, please call us @1-800-222-7023. We will be happy to answer any questions concerning the design, function, and correct use of our products.

▲ NOTICE Rough Country LED lights are for off-road use only.

KIT CONTENTS:

- 1-Rear Bumper
- 2-2" Flush Mount LED Cubes
- 2-LED License Plate Lights

TOOLS NEEDED:

- Pry Tool/Flat Head Screwdriver
- 19mm Socket / Wrench
- 21mm Socket / Wrench
- 24mm Socket / Wrench
- Pliers

HARDWARE INCLUDED:

- 4 - 12mm Flat washers
- 4 - 12mm Lock washers
- 4 - 12mm x 45mm Bolts
- 24 - 14mm Flat washers
- 12 - 14mm Lock washers
- 12 - 14mm Nuts
- 12 - 14mm x 55mm Bolts
- 8 - 4mm x 10mm Button head screws



INSTALLATION INSTRUCTIONS

1. Place the vehicle in park.
2. Unplug the license plate light and the 7 way wiring connector. **See Photo 1 & 2.**

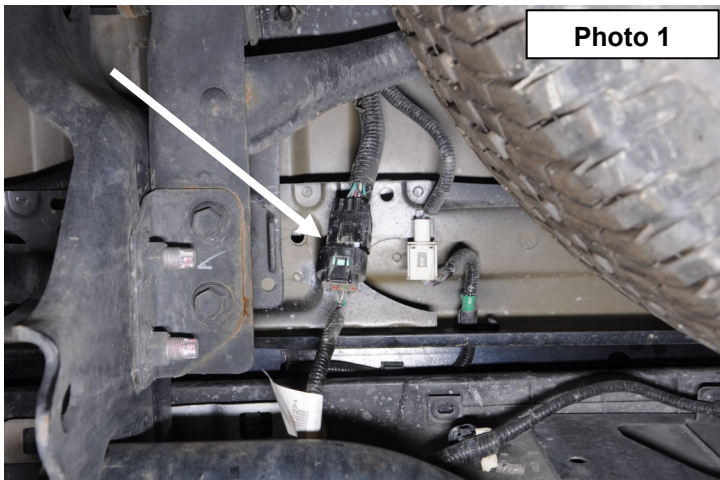


Photo 1

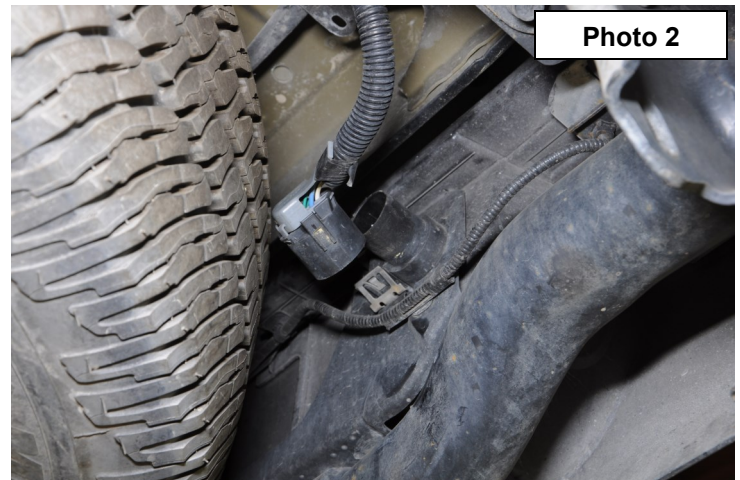
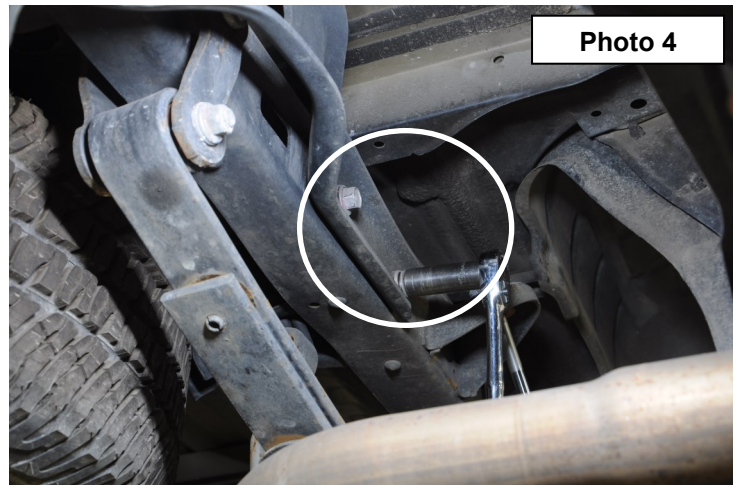
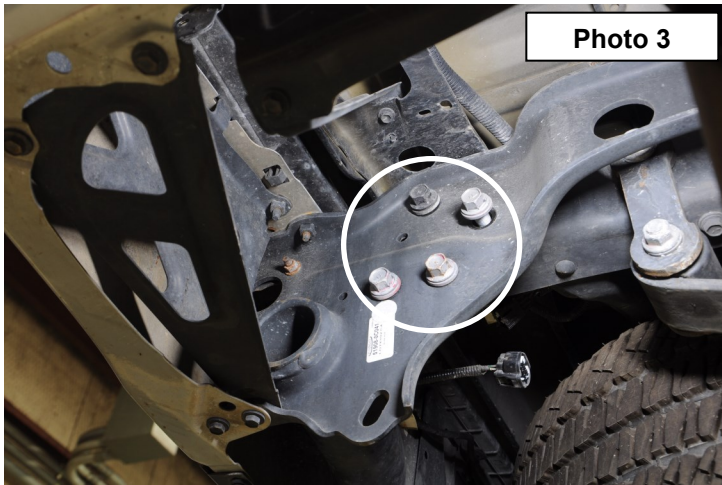
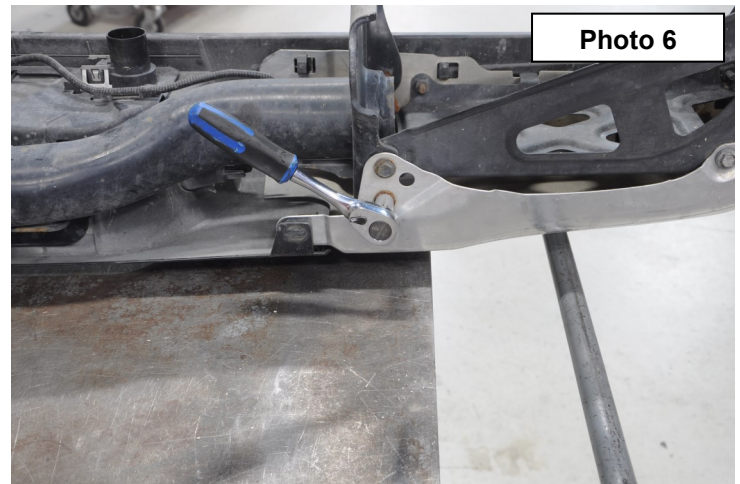


Photo 2

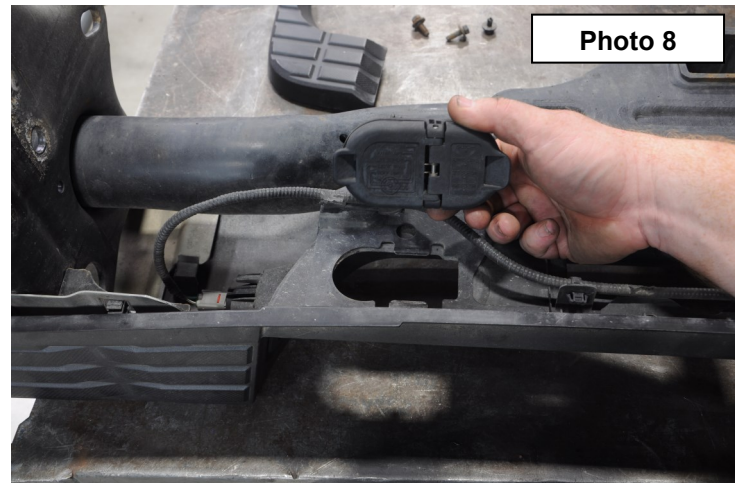
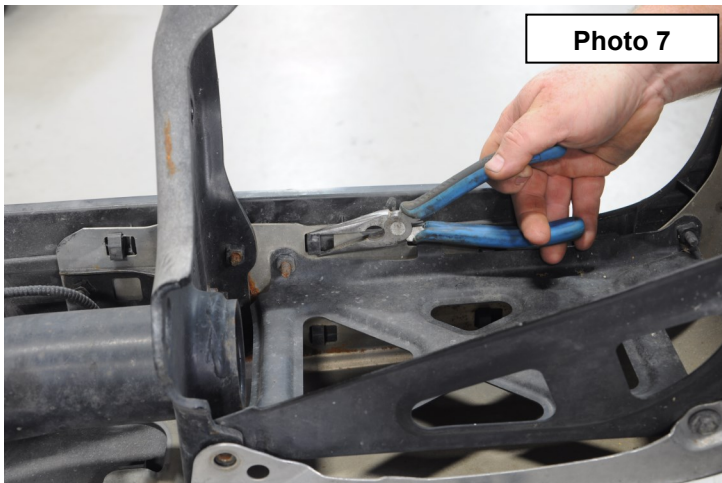
3. Support the bumper and remove the 6 bolts from both sides of the bumper using a 17mm socket. **See Photo 3 & 4.**



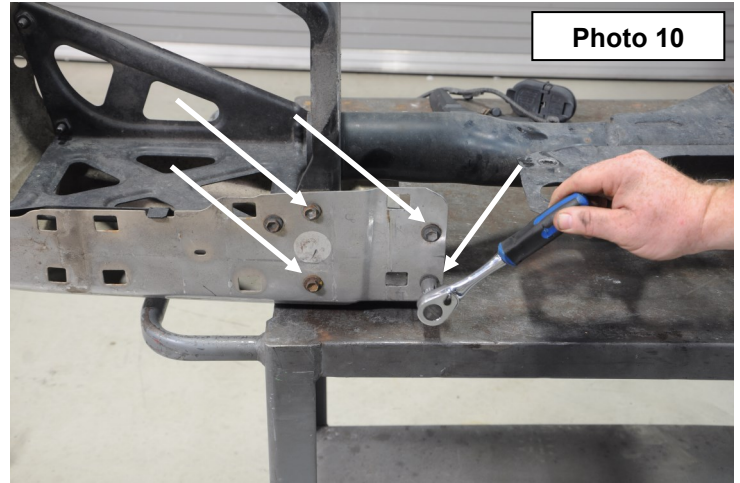
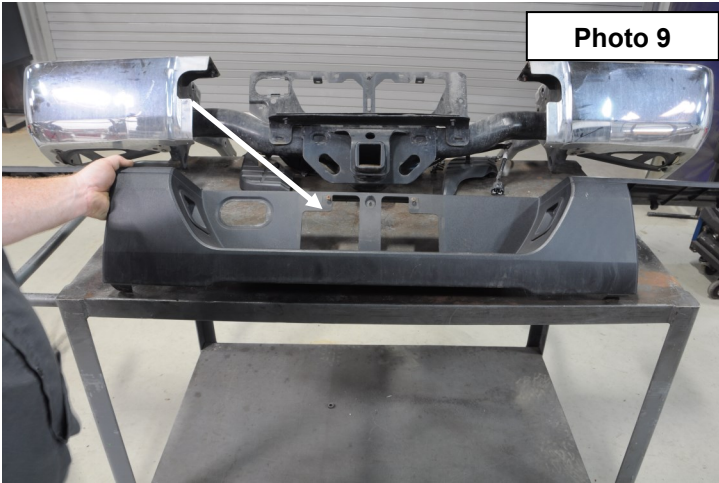
4. Unplug the proximity sensors, if equipped from the bumper.
5. Remove the bumper.
6. Separate hitch from the stock bumper. Remove the two clips and the 4 bolts on the bottom using a 12mm socket. **See Photo 5 & 6.**



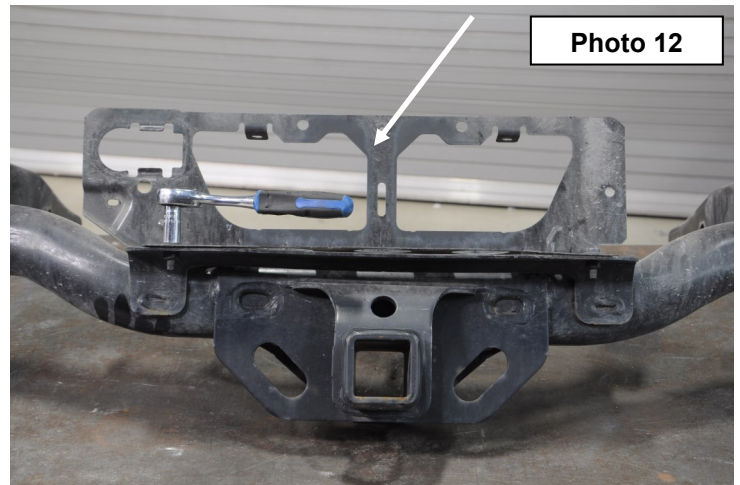
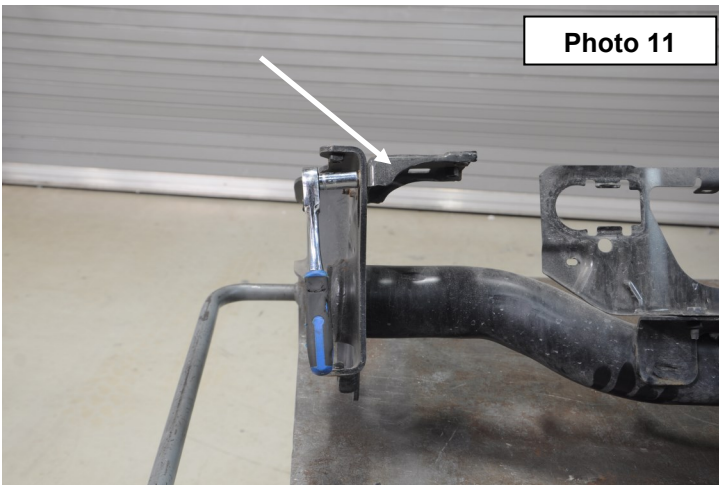
7. Unclip the plastic from the top side of the bumper to gain access to the bolts. **See Photo 7.**
8. Remove the 7 way connector housing from bumper. **See Photo 8.**



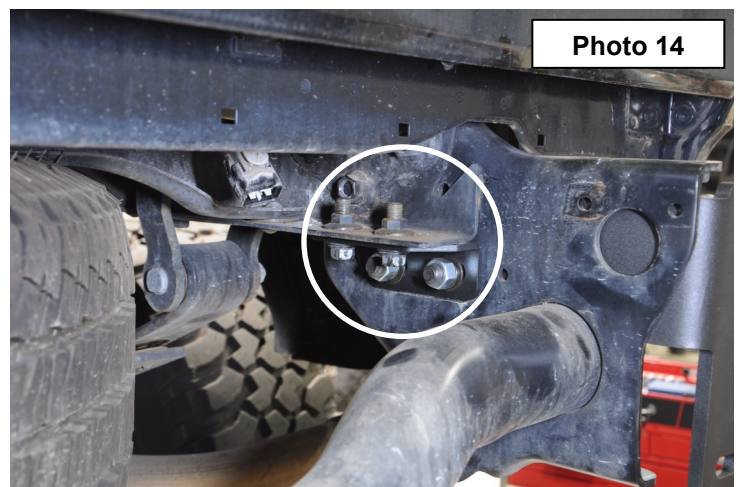
8. Remove the clip behind the license plate, unclip license plate wiring and remove the plastic shell. **See Photo 9.**
9. Remove the 8 bolts (4 per side) from the hitch as shown in **Photo 10** using a 12mm socket and remove the chrome sides.



10. Remove the side and center bracing from the hitch using a 12mm socket. **See Photo 11 & 12.**

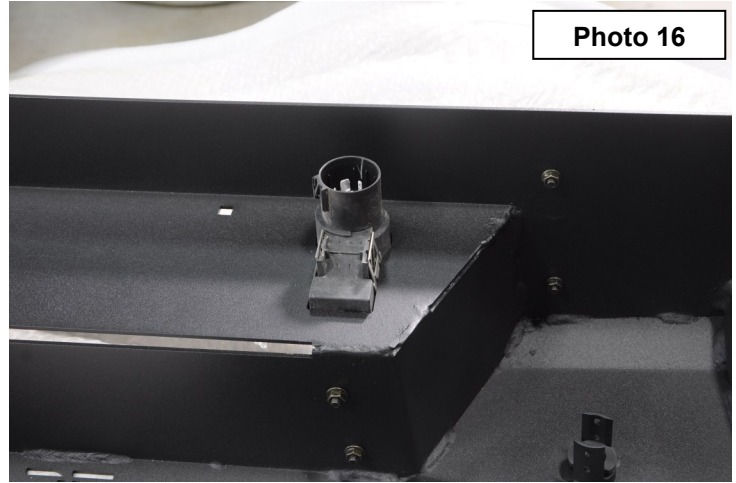


11. Reinstall the hitch on the frame in the stock location as shown in **Photo 13** using the two stock bolts in the front of the hitch.
12. Install the supplied brackets as shown in **Photo 14** using the stock hardware on the frame and the supplied 14mm x 45mm hardware to secure the bracket to the hitch.

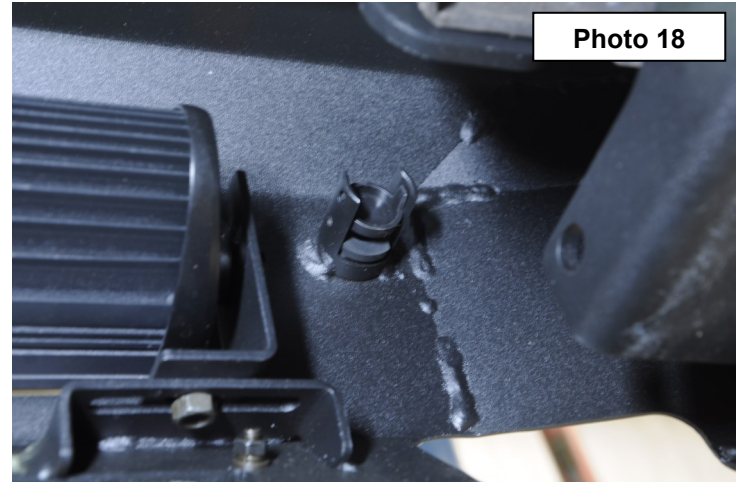
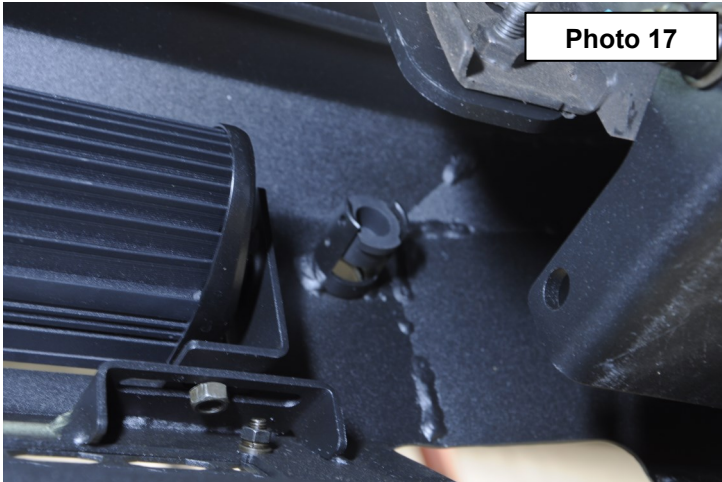


13. Install the new bumper brackets as shown in **Photo 15** with the bracket pointing inward. Secure to hitch with the supplied 14mm x 55mm bolts in the upper hole and 14mm x 55mm bolts in the other 3 holes. Do not fully tighten at this time.

14. Install the 7 way plug housing in the bumper. **See Photo 16.**



15. Reinstall the proximity sensors in the bumper if equipped with the supplied 4mm button head bolts. If not factory equipped, install the rubber plugs and plastic caps as shown in **Photo 17 & 18.**



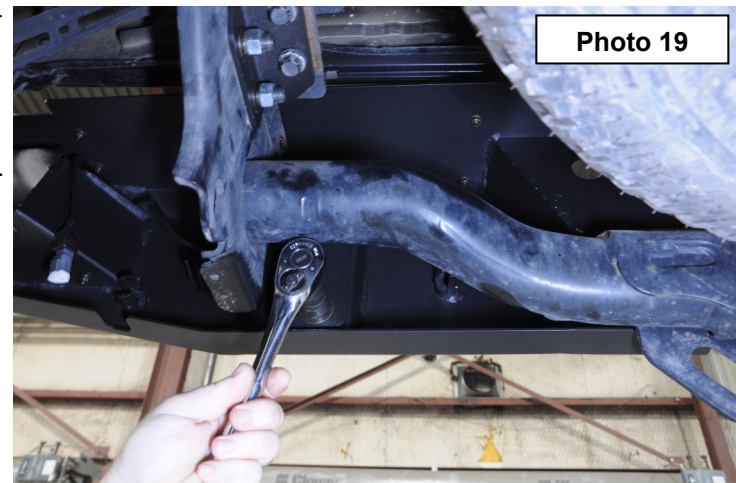
16. Install flush mount lights with supplied hardware.

17. Install the bumper on the frame brackets using the supplied 12mm x 45mm bolts. **See Photo 19.**

18. Adjust the bumper as needed and tighten all hardware, including hitch bolts and bumper bolts using a 19mm, 21mm and 24mm socket.

19. Reconnect the 7 way plug harness, license plate light harness and proximity sensor harness (if equipped).

20. This bumper includes a LED light set for the rear license plate. These lights will need to be spliced into the existing license plate light wiring. Take care to protect the wiring from the elements.



By purchasing any item sold by Rough Country, LLC, the buyer expressly warrants that he/she is in compliance with all applicable Federal, State, and Local laws and regulations regarding the purchase, ownership, and use of the item. It shall be the buyer's responsibility to comply with all Federal, State and Local laws governing the sales of any items listed, illustrated or sold. The buyer expressly agrees to indemnify and hold harmless Rough Country, LLC for all claims resulting directly or indirectly from the purchase, ownership, or use of the items.