

## NISSAN Titan 2016-18 Front Bumper

Thank you for choosing Rough Country for all your vehicle needs.

Please read instructions before beginning installation. Check the kit hardware against the kit contents shown below. Be sure you have all needed parts and know where they go.

If question exist, please call us @1-800-222-7023. We will be happy to answer any questions concerning this product. Check all fasteners for proper torque. Check to ensure for adequate clearance between all components.

Periodically check all hardware for tightness.

### KIT CONTENTS:

- 1-Front Bumper
- 2-Sets of 2 Inch Cube Lights
- 1-20 Inch Dual Row LED Light

### TOOLS NEEDED:

- 2.5mm Allen wrench
- 9/16 wrench
- 10mm socket
- 12mm socket and wrench
- 14mm socket and wrench
- Ratchet

### HARDWARE INCLUDED:

- 8-4mmx10mm Button Head Screws
- 2-6mm Button Head Screws
- 4-6mm Flat Washers
- 2-6mm Nylon Lock Nut
- 4-8mm Lock Washer
- 6-8mm Flat Washer
- 2-8mm Hex Nut
- 2-8mm x 16mm Hex Bolt
- 2-8mm x 25mm Hex Bolt



### Torque Specs:

Size	Grade 5	Grade 8	Size	Class 8.8	Class 10.9
5/16"	15 ft/lbs	20ft/lbs	6MM	5ft/lbs	9ft/lbs
3/8"	30 ft/lbs	35ft/lbs	8MM	18ft/lbs	23ft/lbs
7/16"	45 ft/lbs	60ft/lbs	10MM	32ft/lbs	45ft/lbs
1/2"	65 ft/lbs	90ft/lbs	12MM	55ft/lbs	75ft/lbs
9/16"	95 ft/lbs	130ft/lbs	14MM	85ft/lbs	120ft/lbs
5/8"	135ft/lbs	175ft/lbs	16MM	130ft/lbs	165ft/lbs
3/4"	185ft/lbs	280ft/lbs	18MM	170ft/lbs	240ft/lbs



## INSTALLATION INSTRUCTIONS

1. Unplug the parking sensor wiring harness.
2. Remove the plastic bezel that houses the front sensor, using a flat head screwdriver. **See Photo 1.**
3. Release the four clips hold the bezel onto the bumper, unplug the sensor and set aside for reuse. **See Photo 2.** Repeat on the opposite side of the bumper.



4. Remove the tow hooks on each side of the bumper, use a 17mm socket. **See Photo 3.** Set aside for reuse.
5. Remove the bolt in the plastic cover that is above the tow hook, use a 10mm socket. **See Photo 4.**

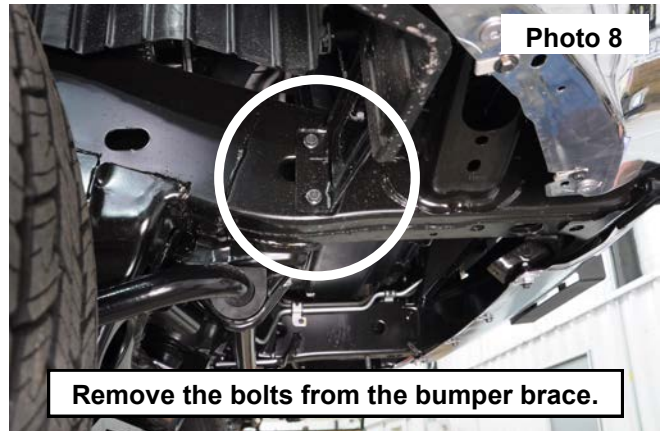
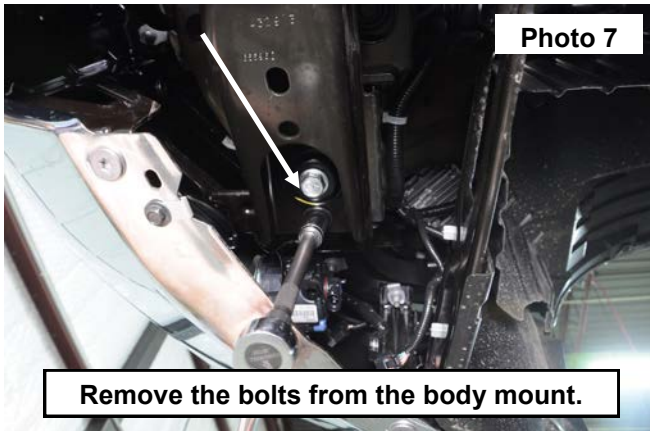


6. Pull down on the cover releasing the plastic push pin, remove the cover from the bumper. **See Photo 5.**
7. If equipped, unplug from the fog lights on the back side of the bumper. **See Photo 6.** Repeat on the opposite side of the bumper.

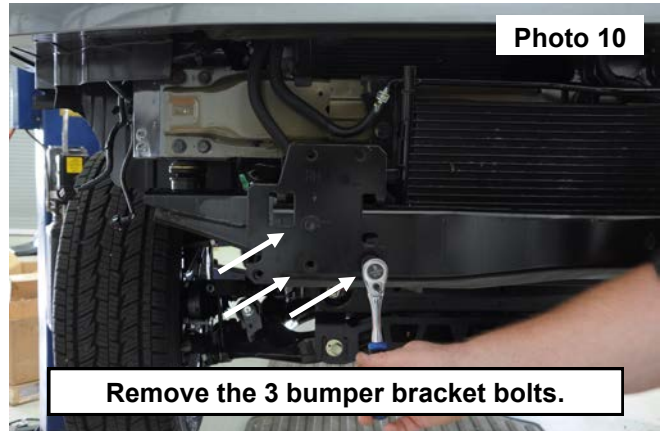
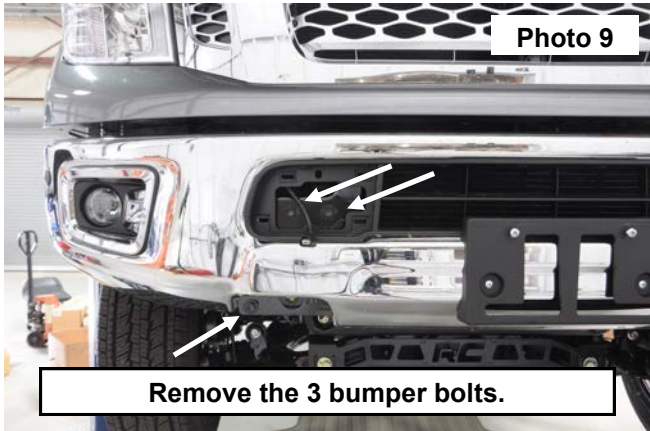




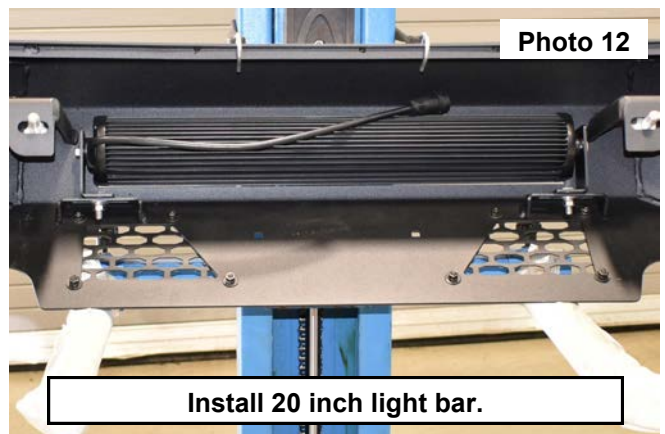
8. Remove the bumper brace bolt from inside the front body mount, use a 14mm socket to remove. **See Photo 7.** Repeat this on the opposite side of the vehicle.
9. Remove the bolts from the bumper brackets on the side of the frame, use a 12mm socket to remove. **See Photo 8.** Repeat this on the opposite side of the vehicle.



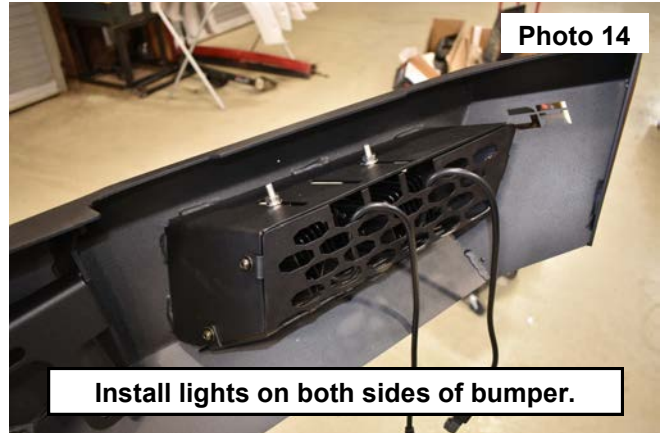
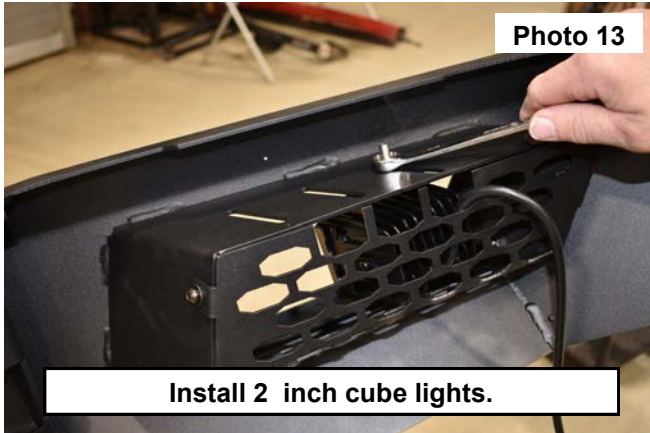
10. Remove the 3 bolts in the front of the bumper on each side, use 14mm socket. **See Photo 9.** Remove the bumper.
11. Remove the 3 bolts in the bumper bracket using a 14mm socket. **See Photo 10.** Repeat this on the opposite side of the vehicle. **Retain the hardware for reuse.**



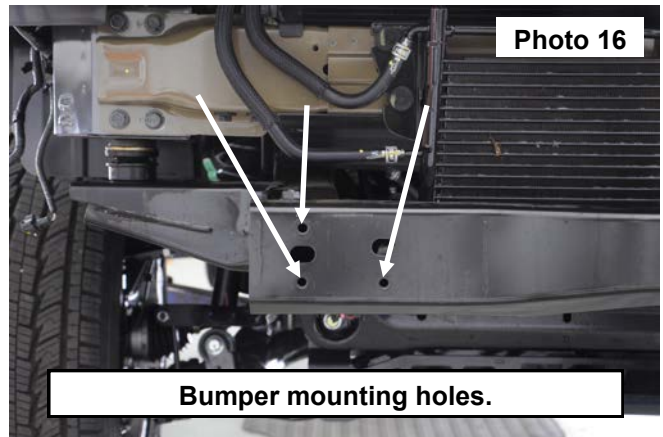
12. When installing the center 20 inch LED light, the mounting brackets will be labeled for the correct side. **See Photo 11.**
13. Install the LED light and wiring using instructions included in those kits. **See Photo 12.**



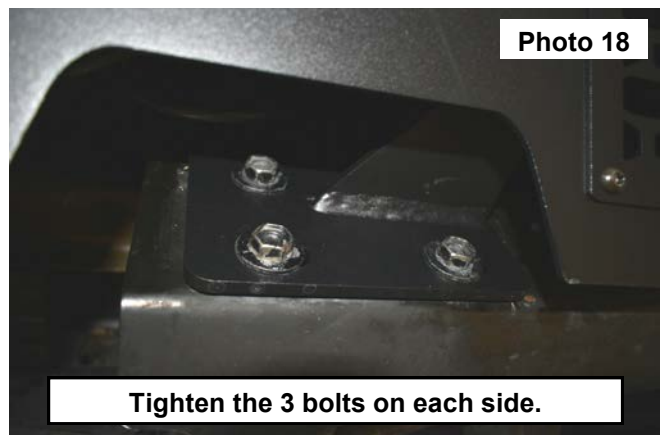
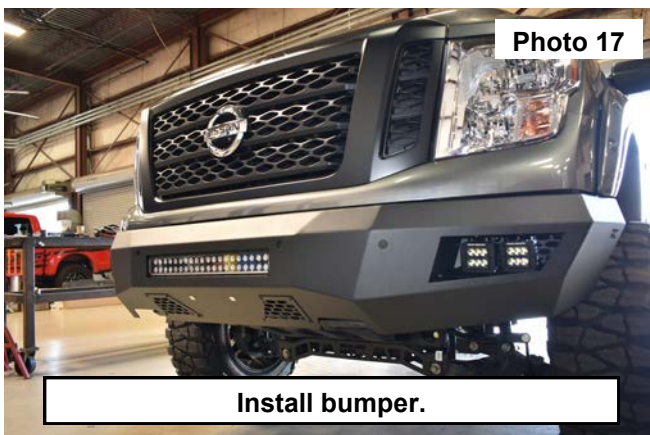
14. Install the 2 inch cube lights in the mounts on both sides of the bumper and plug them into the 2 to 1 wiring adaptor included with the kit. **See Photo 13 and 14.** Use the instructions included in those kits to wire into vehicle.
15. Tighten lights using a 9/16 wrench.



16. If equipped, remove the parking sensors from the OE bumper and install the sensors into the bumper using the supplied 4mmx10mm Button Head Allen in the new mounting holes, use a 2.5 Allen wrench to tighten. **See Photo 15.** **Do not over tighten.** If not factory equipped with parking sensors, install supplied rubber plug and plastic clips to keep plug in the bumper.
17. Use the 3 mounting holes on the end of the frame to mount the new bumper. **See Photo 16.**



18. Install the bumper onto the truck, using the OE hardware on both sides. **See Photo 17.**
19. Adjust the bumper center of the vehicle, tighten the OE hardware on each side, using a 14mm wrench. **See Photo 18.**
20. Re install the tow hooks using OE hardware. Re connect the parking sensor plug behind the bumper.



By purchasing any item sold by Rough Country, LLC, the buyer expressly warrants that he/she is in compliance with all applicable, State, and Local laws and regulations regarding the purchase, ownership, and use of the item. It shall be the buyer's responsibility to comply with all Federal, State and Local laws governing the sales of any items listed, illustrated or sold. The buyer expressly agrees to indemnify and hold harmless Rough Country, LLC for all claims resulting directly or indirectly from the purchase, ownership, or use of the items.

