

## 2021 & Up Bronco Multi Light Controller Kit

Thank you for choosing Rough Country for all of your Off Road needs.

Rough Country recommends that a certified technician install this system. In addition to these instructions, professional knowledge of disassemble/reassembly procedures as well as post installation checks must be known. Attempts to install this system without this knowledge and expertise may jeopardize the integrity and/or operating safety of the vehicle. Please read all the instructions before beginning the installation. Check the kit hardware against the "Kit Contents" list below. If question exist, please call us @1-800-222-7023. We will be happy to answer any questions concerning this product. Check all fasteners for proper torque. Check to ensure for adequate clearance between all components. Check and retighten wheels at 50 miles and again at 500 miles. Periodically check all hardware for tightness. Be sure you have all the needed parts and understand where they go. Also, please review the "Tools Needed" list to be certain you have the necessary tools to complete the installation.

### PRODUCT USE INFORMATION

**⚠ WARNING** Rough Country makes no claims regarding lifting devices and excludes any and all implied claims. We will not be responsible for any product that is altered.



**TOOLS NEEDED:**

Wire stripper  
Crimper  
Lighter

**Metric Wrench/Socket**

10mm  
13mm  
3mm Allen Wrench

**KIT CONTENTS:**

MLC6 Relay Board  
Cover  
Positive Cable  
Negative Cable  
Switch Harness  
Bronco Bracket

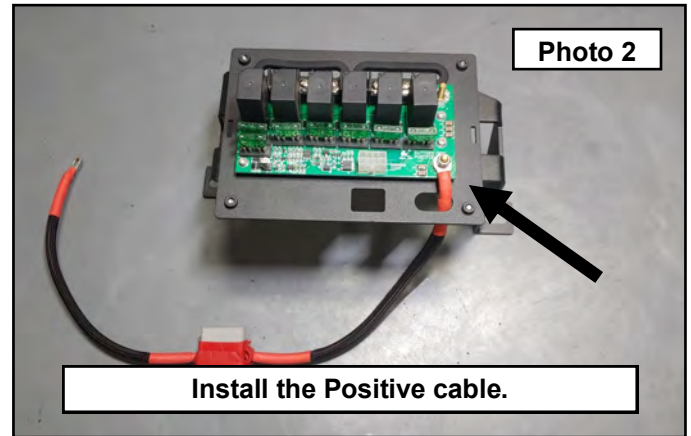
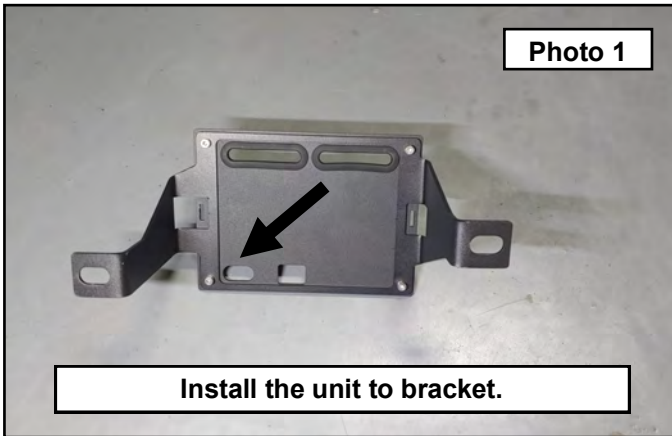
**HARDWARE INCLUDED:**

Cable Ties  
Blue Fork Connectors (12)  
Red Butt Connectors (6)  
3mm Allen Bolts (4)  
3mm Lock Washers (4)  
6mm Nuts (2)  
6mm Lock Washers (2)

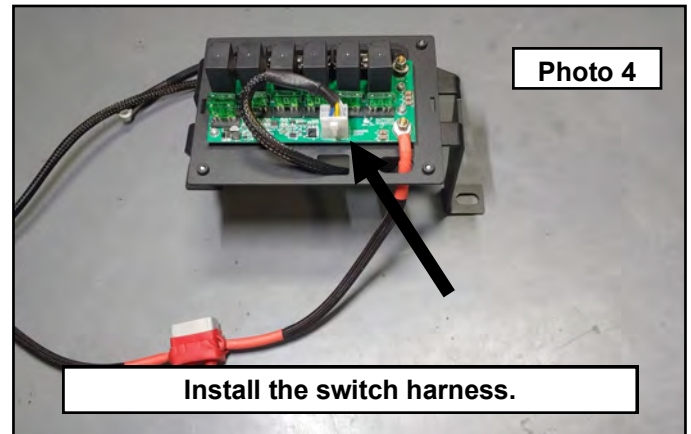
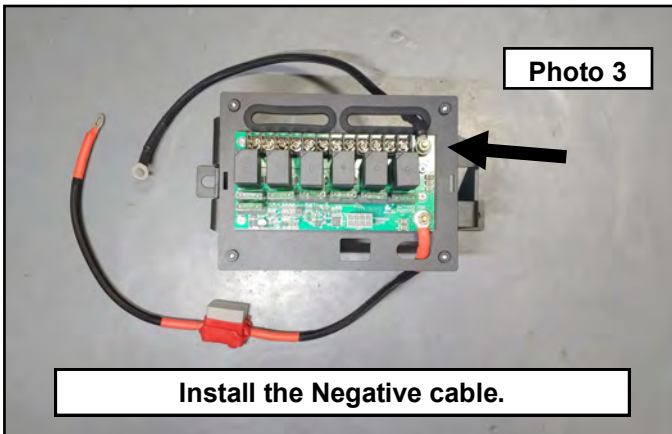


### Installation Instructions

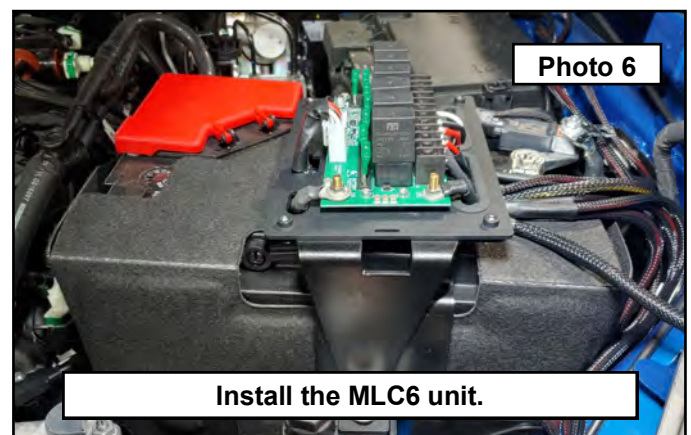
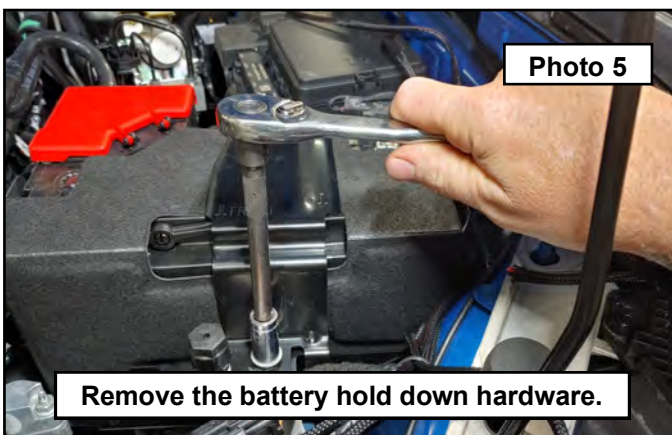
1. Park your vehicle on a clean flat surface, engage the parking brake.
2. **Save all hardware removed from the vehicle unless otherwise noted.**
3. Open the hood and disconnect the negative terminal on the battery.
4. Pop the cover off the MLC6 unit by opening the clips. Install the relay unit to the bracket using the provided 3mm Allen bolts and lock washers. Make sure to install as shown with the small oval hole in the corner next to the offset leg of the bracket. This is important for wire location once installed in the vehicle. **Photo 1.**
5. Flip the unit over and install the Red Positive cable to the terminal that says Battery using the provided nut and lock washer. It will be the terminal next to the small oval hole. **DO NOT** over torque as damage to the unit can occur. **Photo 2.**



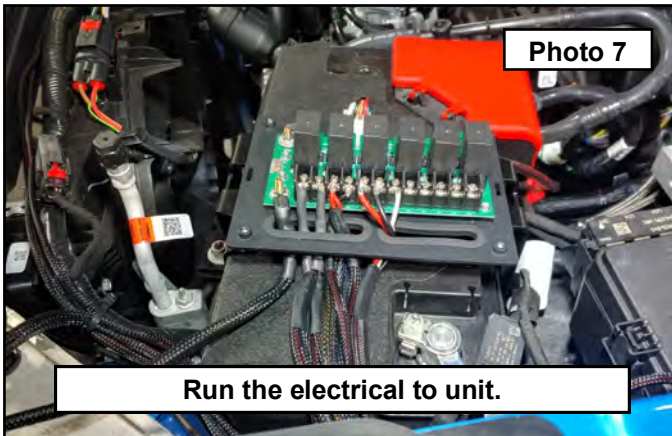
6. Install the Black negative cable to the terminal that says Ground next to the long oval hole using the provided nut and lock washer. **DO NOT** over torque as damage to the unit can occur. **Photo 3.**
7. Connect the switch wire harness connector to the relay board and pass through the square hole in the plate. **Photo 4.**



8. Remove the vehicles battery hold down hardware using a 13mm socket. **Photo 5.**
9. Install the MLC6 unit on top of the battery hold down bracket using the previously removed factory hardware. The MLC6 bracket is offset and has a longer leg. When installed correctly, the Red Positive cable will be on the positive side of the battery and the Black Negative cable will be on the negative side of the battery. The MLC6 unit will also sit level over the middle of the battery. Route the switch harness under the unit towards the fender. **Photo 6.**

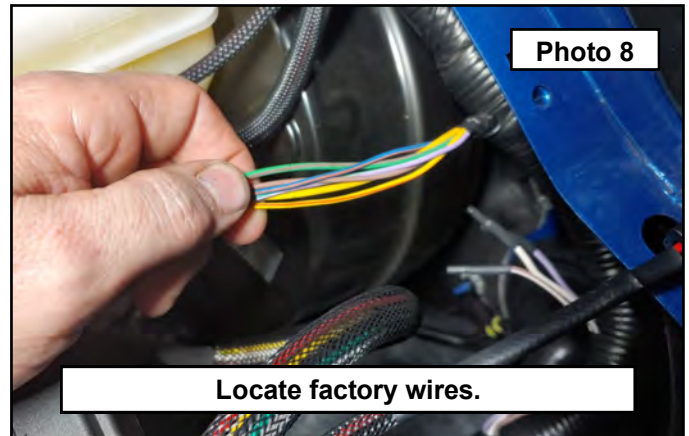


10. Route accessory wires up through the small ovals of the MLC6 unit. Each relay will have a positive and ground terminal. You can hook up both of these to your accessories or only hook the positive side up as long as your accessory is grounded elsewhere. Use the provided fork connectors to hook up the wires to the appropriate terminals on the relay board. **Photo 7.**
11. At the firewall next to the brake booster you will see two dead ended bundles of wires. Locate the bundle with 6 different colored wires and pull out for access. These each connect to the AUX switch panel in the upper center console. Use a quality wire stripper and remove 1/8" of the outer sleeve. **Photo 8.**



**Photo 7**

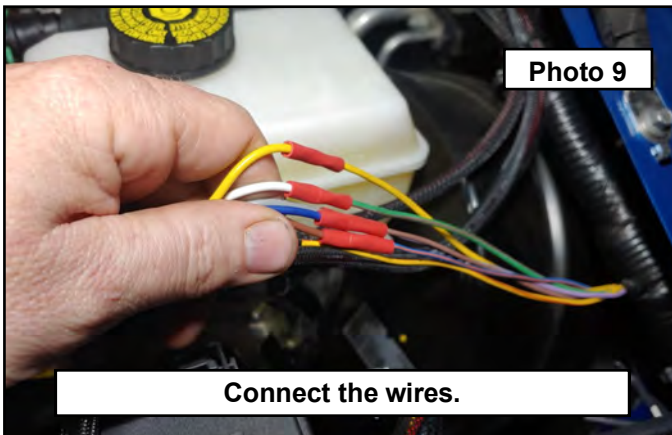
**Run the electrical to unit.**



**Photo 8**

**Locate factory wires.**

12. Route the MLC6 switch harness along the fender to the factory wires. Butt connector the wire colors as follows from the firewall to the MLC6; (First color(s) listed are factory and second color are MLC6) 1. Yellow to Gray, 2. Green/Brown to White, 3. Purple/Green to Yellow, 4. Brown to Black, 5. Blue/Orange to Blue, and 6. Yellow/Red to Brown. Once all are connected, use a heat gun or other heat source to shrink the protective sleeves. Connected as stated will have the #1 switch activate the first spot on the relay board and so on. **Photo 9.**
13. Install the positive and negative cables to terminals on the battery using a 10mm socket. Start the vehicle and test all connections / accessories. Once verified, install the MLC6 cover. Use the Cable ties to keep wires clean and tucked out of harms way. **Photo 10.**



**Photo 9**

**Connect the wires.**



**Photo 10**

**Hook up the cables and install cover.**

By purchasing any item sold by Rough Country, LLC, the buyer expressly warrants that he/she is in compliance with all applicable , State, and Local laws and regulations regarding the purchase, ownership, and use of the item. It shall be the buyers responsibility to comply with all Federal, State and Local laws governing the sales of any items listed, illustrated or sold. The buyer expressly agrees to indemnify and hold harmless Rough Country, LLC for all claims resulting directly or indirectly from the purchase, ownership, or use of the items.