

ROUGH COUNTRY
SUSPENSION SYSTEMS®

929101600

FORD 2015-18 Front Seat Covers

Thank you for choosing Rough Country for all your vehicle needs.

Please read instructions before beginning installation. Check the kit hardware against the kit contents shown below. Be sure you have all needed parts and know where they go.

If question exist, please call us @1-800-222-7023. We will be happy to answer any questions concerning this product.

Check all fasteners for proper torque. Check to ensure for adequate clearance between all components.

Periodically check all hardware for tightness.

KIT CONTENTS:

Driver Side Seat Cover x1
Pass Side Seat Cover x1
Headrest Covers x2

TOOLS NEEDED:

Small Pry Tool
13mm Socket

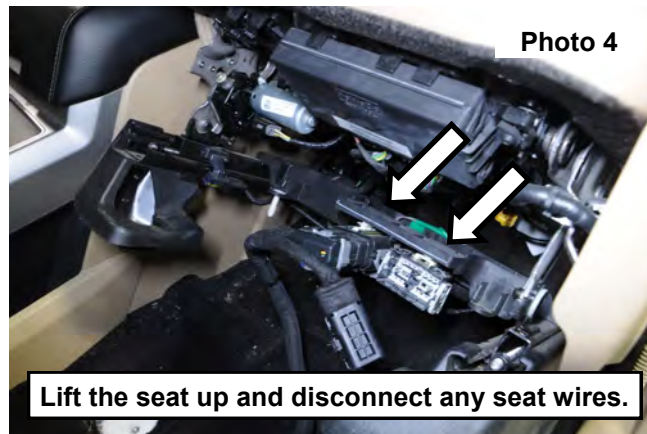
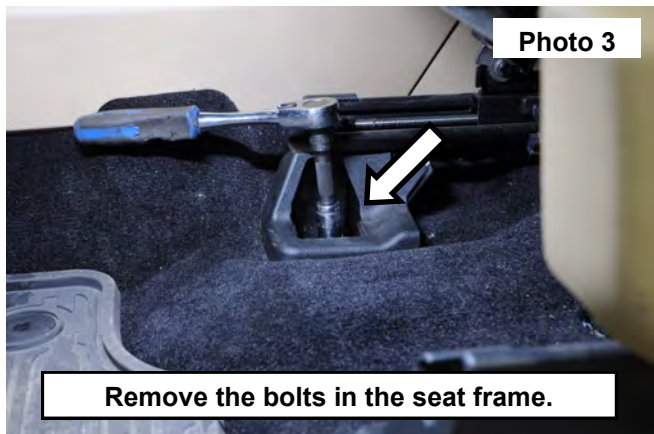


INSTALLATION INSTRUCTIONS

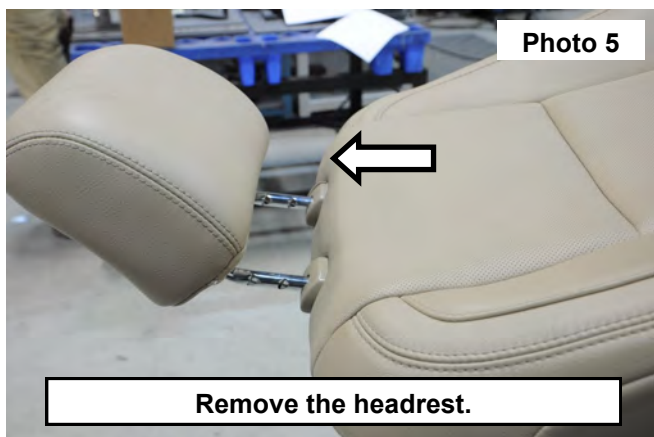
1. Seats were removed for photo purposes. This is not necessary but can be removed for installation.
2. If you are not removing the seats skip to *step 6*.
3. If you have chosen to remove the front seats remove the plastic trim covering the front and rear bolts in the seat frame using a small pry tool to release the cover. **See Photo 1 and 2 .**



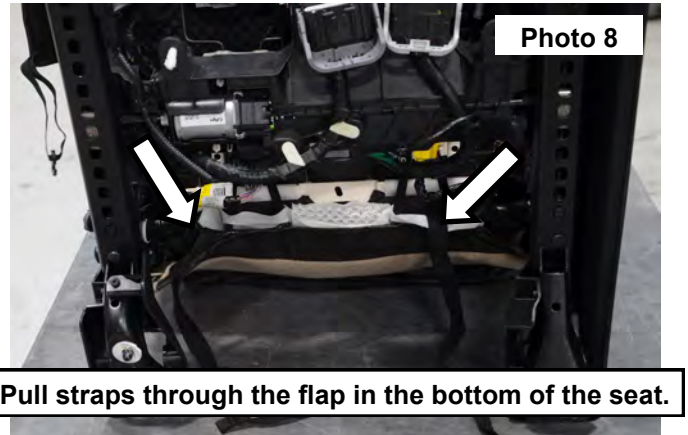
4. Remove the 4 bolts from the seat frame using a 13mm socket. **See Photo 3.**
5. Lean the seat rearward and disconnect the plugs under the seat. Then remove the seat. **See Photo 4.**



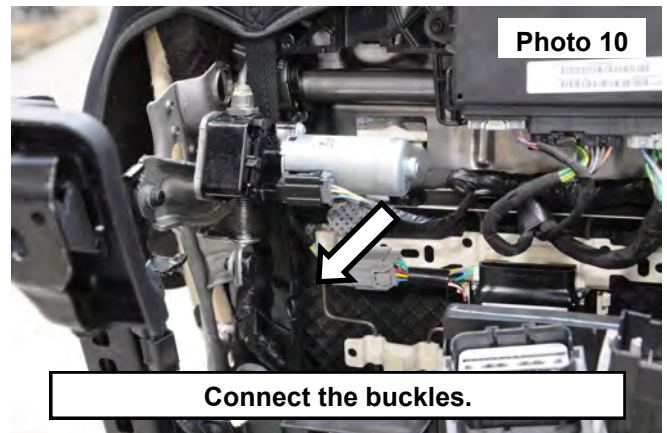
6. Installing the seat cover. Remove the headrest from the seat by pressing the button on the side of the adjustment tabs. Pull straight out of the top of the seat then set aside in a safe place for later use. **See Photo 5.**
7. Place the drivers side cover onto the seat from the top down, this one has a cutout for the airbag on the left side as shown. **See Photo 6.**



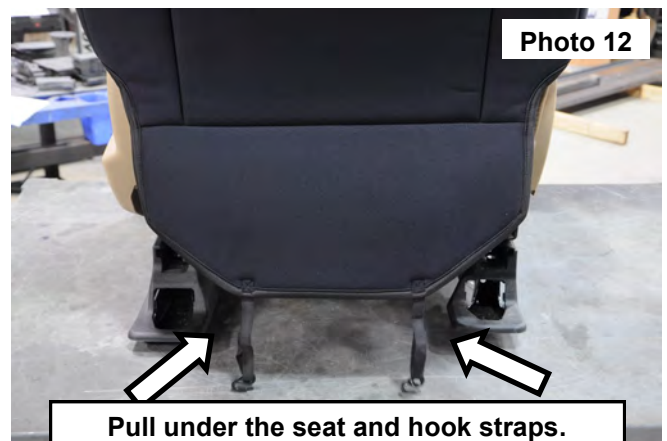
8. Insert the straps in between the back rest and the bottom of the seat. **See Photo 7.**
9. Pull the straps through the flap located at the back / rear bottom of the seat. **See Photo 8.**



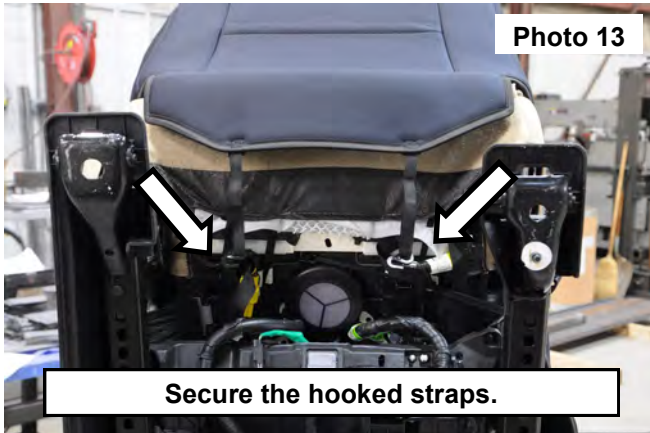
10. Fold the bottom of the seat cover over the front edge of the bottom of the seat. **See Photo 9.**
11. Rout the 2 straps around the hardware of the bottom seat. Connect the buckles together for each strap front to back. Then pull the strap tightening the cover to the bottom of the seat. **See Photo 10.**



12. Tuck the seat covers behind the plastic trim of the seat, pulling the hooked straps tight and connecting them to the frame of the seat. **See Photo 11.**
13. Pull the back of the seat cover under the bottom of the seat and pull the hooked straps tight and connecting them to the frame of the seat. **See Photo 12 and 13.**



14. Install the headrest onto the top of the seat. Then install the cover using the Velcro to secure the cover on. **See Photo 14.**
15. Install the front seats if they were removed for the installation process at this time.



By purchasing any item sold by Rough Country, LLC, the buyer expressly warrants that he/she is in compliance with all applicable, State, and Local laws and regulations regarding the purchase, ownership, and use of the item. It shall be the buyers responsibility to comply with all Federal, State and Local laws governing the sales of any items listed, illustrated or sold. The buyer expressly agrees to indemnify and hold harmless Rough Country, LLC for all claims resulting directly or indirectly from the purchase, ownership, or use of the items.

