



## CHEVY 2019-20 1500 Fender Flares

**Thank you for choosing Rough Country for all your vehicle needs.**

Please read instructions before beginning installation. Check the kit hardware against the kit contents shown below. Be sure you have all needed parts and know where they go.

If question exist, please call us @1-800-222-7023. We will be happy to answer any questions concerning this product.

Check all fasteners for proper torque. Check to ensure for adequate clearance between all components.

Periodically check all hardware for tightness.

**KIT CONTENTS:**

- Driver Front Flare x1**
- Driver Rear Flare x1**
- Passenger Front Flare x1**
- Passenger Rear Flare x1**

**TOOLS NEEDED:**

- T15 Torx Bit**
- Phillips Bit**
- Side Cutter**
- Alcohol / Cleaner**
- Soft Cloth**

**F-C319201BAG:**

- Double Sided Tape x6**
- Body Clips x12**
- #8 Screws x12**
- Fender Flare Edge Trim**
- Rear Flare Mounts x6**
- Passenger Front Inner Fender Bracket x1**
- Driver Front Inner Fender Bracket x1**

**F-C319201BAG1:**

- Driver Fender Flare Bracket x1**
- Passenger Fender Flare Bracket x1**

**F-C319201BAG2:**

- Rear Flare Mounts x6**
- Passenger Front Inner Fender Bracket x1**
- Driver Front Inner Fender Bracket x1**

**F-C319201BAG3:**

**Torque Specs:**

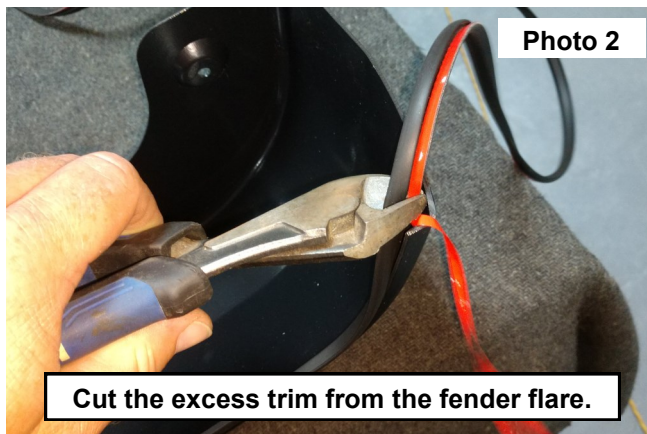
Size	Grade 5	Grade 8	Size	Class 8.8	Class 10.9
5/16"	15 ft/lbs	20ft/lbs	6MM	5ft/lbs	9ft/lbs
3/8"	30 ft/lbs	35ft/lbs	8MM	18ft/lbs	23ft/lbs
7/16"	45 ft/lbs	60ft/lbs	10MM	32ft/lbs	45ft/lbs
1/2"	65 ft/lbs	90ft/lbs	12MM	55ft/lbs	75ft/lbs
9/16"	95 ft/lbs	130ft/lbs	14MM	85ft/lbs	120ft/lbs
5/8"	135ft/lbs	175ft/lbs	16MM	130ft/lbs	165ft/lbs
3/4"	185ft/lbs	280ft/lbs	18MM	170ft/lbs	240ft/lbs



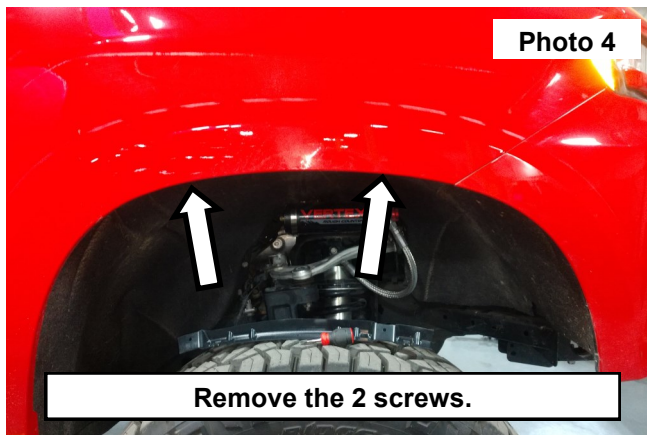
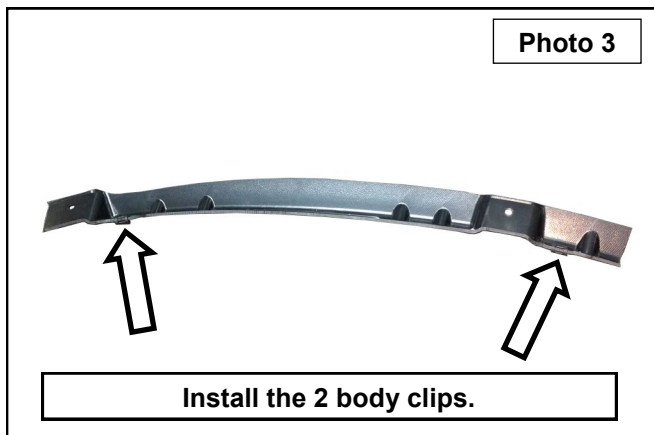


## INSTALLATION INSTRUCTIONS

1. Place the front fender flare on a table using a soft cloth. Clean the inside lip of the fender flare using alcohol. Apply the supplied edge trim over the lip and apply the double sided tape onto the inside of the flare. Remove the tape cover and stick the double sided tape to the flare. **See Photo 1.**
2. Cut the excess trim from the fender flare. **See Photo 2.**



3. Install the (2) body clips onto the inner fender bracket. **See Photo 3.**
4. Clean the fender surface and inner fender well of dirt and debris.
5. Remove the (2) OE screws in the top of the splash guard using a T15 Torx bit. **See Photo 4.** Retain hardware.

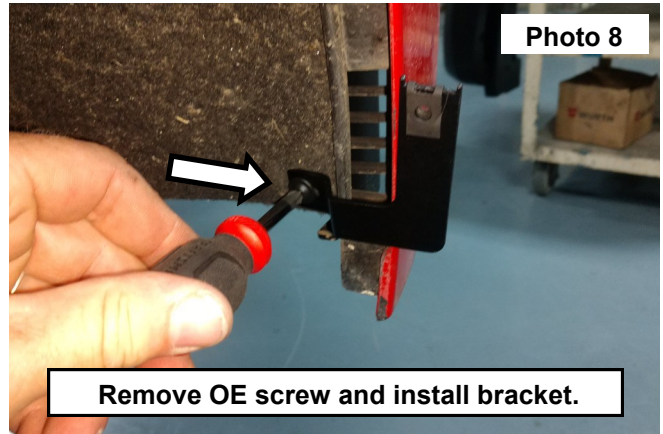
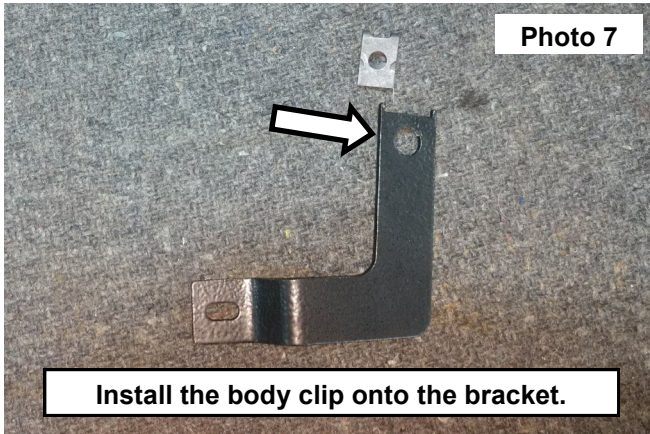


6. Install the inner fender bracket to the top of the fender using the retained OE screws. **See Photo 5.**
7. Tighten the inner fender bracket using a T15 Torx bit. **See Photo 6.**

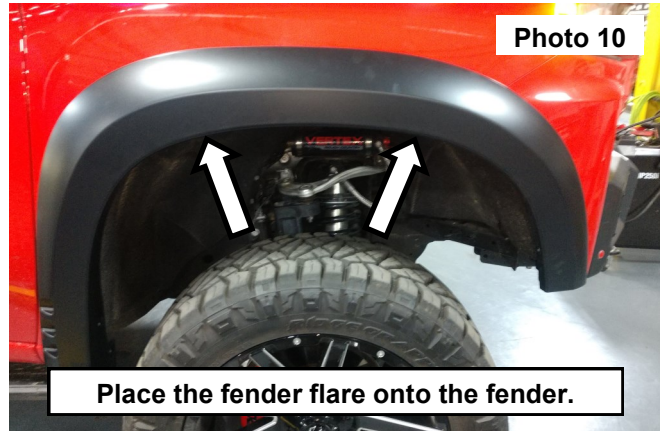




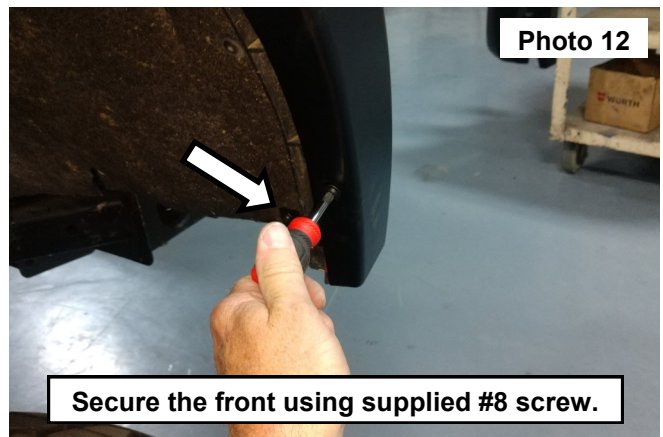
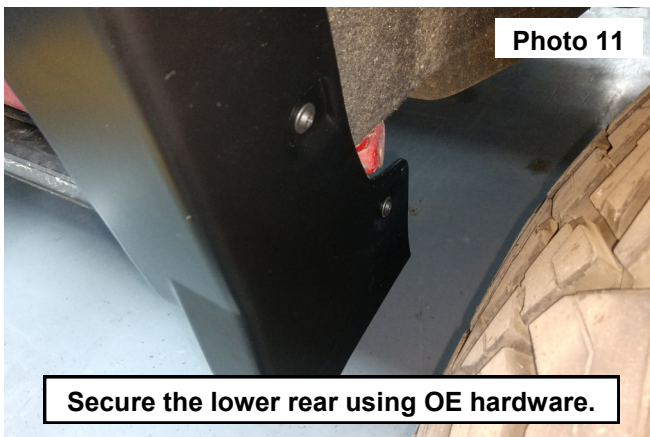
8. Locate the front bracket and install the body clip onto the 6mm hole. **See Photo 7.**
9. Remove the bottom front OE screw using a T15 Torx bit, install the bracket using the slotted hole using the OE bolt. Tighten the bracket to where it can still be adjusted to install the fender flare. **See Photo 8.**



10. Using a T15 Torx bit remove the (3) screws in the splash guard and the (1) bolt in the bottom using a 10mm socket. Then remove the splash guard. Retain hardware. **See Photo 9.**
11. Place the fender flare onto the front fender and secure the top of the flare using (2) of the supplied #8 screws. Tighten using a Phillips bit driver. **See Photo 10.**



12. Secure the lower rear of the flare using the (2) retained OE screws. Tighten using a T15 Torx bit. **See Photo 11.**
13. Secure the front of the fender flare using (1) of the supplied #8 screws. Tighten using a Phillips bit driver. **See Photo 12.** After adjusting the flare tighten the inward OE screw using an T15 Torx bit.





## REAR INSTALLATION INSTRUCTONS

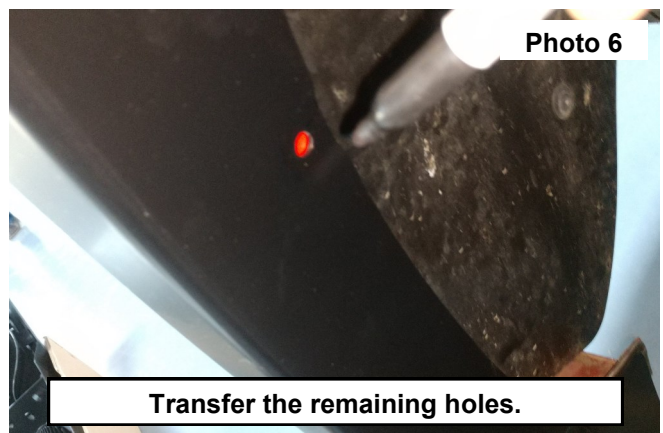
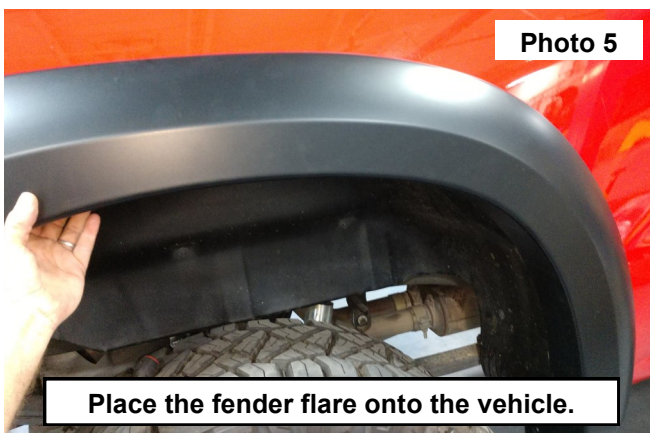
1. Place the rear fender flare on a table using a soft cloth. Clean the inside lip of the fender flare using alcohol. Apply the supplied edge trim over the lip and apply the double sided tape onto the inside of the flare. Remove the tape cover and stick the double sided tape to the flare. **See Photo 1.**
2. Cut the excess trim from the fender flare. **See Photo 2.**



3. Clean the fender surface and inner fender well of dirt and debris. **See Photo 3.**
4. Locate the rear inner flare mounting brackets and install the body clip onto the 6mm hole to the side with the two square indentions. Place the flat side of the clip to the outside of the cupped side of the mounting bracket. This will be the mating surface with the inner fender. **See Photo 4.**



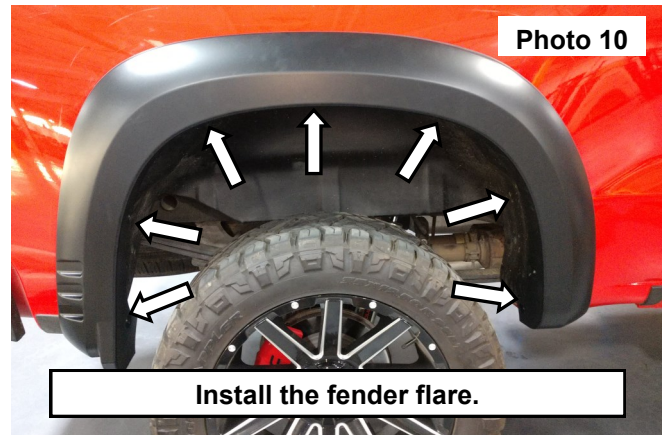
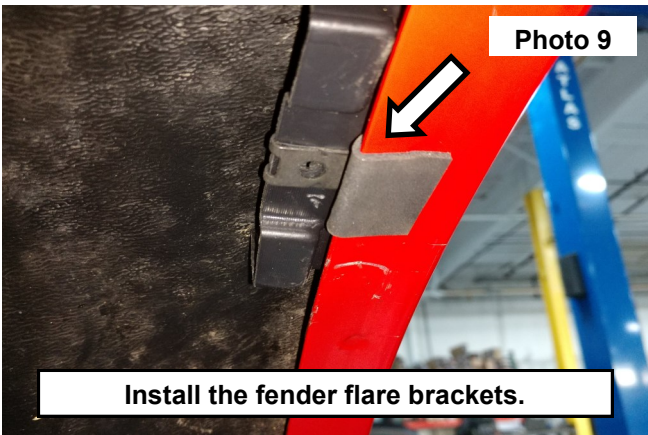
5. Place the fender flare onto the vehicle. Note the screws that align with the fender flare mounting holes. Then remove the screws using a T15 Torx bit.
6. Temporarily install the OE screws into (2) of the flare mounting holes to hold into position using the T15 Torx bit. **See Photo 5.**
7. Use a permanent marker to transfer the remaining holes onto the inner fender of the vehicle. **See Photo 6.**
8. Remove the screws and fender flare from the vehicle.



9. Remove the backing off of the double sided tape and place over center of the marked locations. See Photos 7 and 8.



10. Remove the double sided tape backing. Then install the flare bracket onto the center of the double sided tape. See **Photo 9**.
11. Install the fender flare using the OE hardware at the bottom of the flare and using the supplied #8 screws into the flare and the bracket. See **Photo 10**.
12. Tighten the OE hardware using a T15 Torx bit.
13. Tighten the #8 Screws using a Phillips bit driver.



By purchasing any item sold by Rough Country, LLC, the buyer expressly warrants that he/she is in compliance with all applicable, State, and Local laws and regulations regarding the purchase, ownership, and use of the item. It shall be the buyers responsibility to comply with all Federal, State and Local laws governing the sales of any items listed, illustrated or sold. The buyer expressly agrees to indemnify and hold harmless Rough Country, LLC for all claims resulting directly or indirectly from the purchase, ownership, or use of the items.

