

2015 Chevy/GMC COLORADO/CANYON

RCG1583CC, RCG1583CC-6, RCG1595CC, RCG1595CC-6

Bolt Kit (Included in step box):

- 12) M8 x 25MM HC BOLTS
- 12) M8 X 1 ¼" TINNEMAN CLIPS
- 6) 3/8" FLAT WASHER
- 6) FENDER WASHER

Tools Needed:

- Screwdriver
- 3/8" Ratchet
- 13mm wrench
- 13mm socket wrench
- Torque wrench



Step 1: Locate driver side step. The end with the plastic end cap (straight cut) goes toward the rear of the vehicle.

Step 2: Measure the distance between each mounting brackets on the step starting with the front bracket.

Step 3: Starting with the driver side, locate the rubber body plugs on the underside of the body. There will be 4 sections of 2 plugs each. One near the top of the body and one near the bottom. (. NOTE: *Some applications use three brackets per side and some use 4 brackets per side.*) **Figure A**

Step 4: Using the measurement from the brackets, only remove the rubber plugs from the sections you will need to mount the step. (NOTE: *Start with the first section nearest to the front of the vehicle.*)

Step 5: Insert one 8mm x 1 ¼' Tinnerman clip into each mounting hole by sliding the clip from the large hole and lining up the threaded part with the smaller hole. Make sure the flat side of the clip faces toward the outside of the body. **Figure B**

Step 6: Carefully raise the nerf-step into position aligning all brackets with the three mounting holes. Insert all six M8 X 25mm HC bolts. Use the smaller 3/8" washers for the bottom bolt and the larger Fender washer for the top bolt and hand tighten only.

Figure A

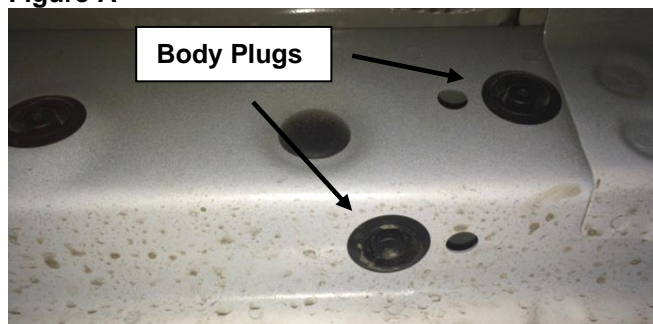
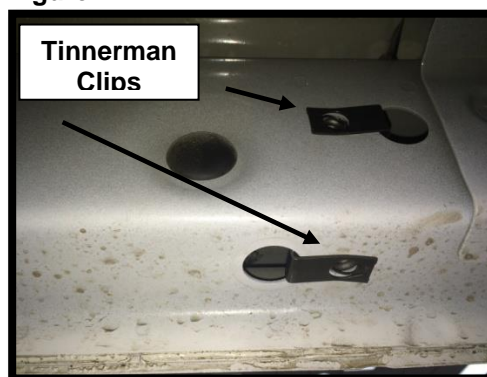


Figure B



Products licensed to Rough Country by Fichter Designs are protected by US patent law and International Copy Right law. US Patent # 6855783, # 6874801, # 7416202 apply. Other patents and continuances pending. Products configuration also protected by International Trade Dress Law. All Design and Patent infringements will be prosecuted to the full extent of the law.

By purchasing any item sold by Rough Country, LLC, the buyer expressly warrants that he/she is in compliance with all applicable Federal, State, and Local laws and regulations regarding the purchase, ownership, and use of the item. It shall be the buyers responsibility to comply with all Federal, State and Local laws governing the sales of any items listed, illustrated or sold. The buyer expressly agrees to indemnify and hold harmless Rough Country, LLC for all claims resulting directly or indirectly from the purchase, ownership, or use of the items



INSTALLATION INSTRUCTIONS

www.roughcountry.com

Phone: (800) 222-7023

Step 7: Starting with the rear bracket, adjust step as close to the body as possible without making contact and torque both bolts tight. Then repeat same step with the front bracket and the center bracket.

Step 8: Repeat steps 2-7 with passenger side. Your install is now complete.

By purchasing any item sold by Rough Country, LLC, the buyer expressly warrants that he/she is in compliance with all applicable Federal, State, and Local laws and regulations regarding the purchase, ownership, and use of the item. It shall be the buyers responsibility to comply with all Federal, State and Local laws governing the sales of any items listed, illustrated or sold. The buyer expressly agrees to indemnify and hold harmless Rough Country, LLC for all claims resulting directly or indirectly from the purchase, ownership, or use of the items