

ROUGH COUNTRY

SUSPENSION SYSTEMS®

Jeep 2007-17 JK/JKU Drop Steps

Thank you for choosing Rough Country.

Please read instructions before beginning installation. Check the kit hardware against the parts list. Be sure you have all needed parts and know where they go. Also, please review the tools needed list and make sure you have all of the needed tools.

2-Door Kit Hardware:

- (4) Mounting Brackets
- (8) 6mm x25mm Bolts
- (16) 6mm Flat Washers
- (8) 6mm Lock Nuts
- (4) 8mm x 30mm Bolts
- (12) 8mm Flat Washers
- (8) 8mm Lock Washers
- (4) 8mm Lock nuts
- (4) 8mm Flag Bolts
- (4) 8mm Plastic Retainers
- (4) 10mm x 35mm Bolts
- (4) 10mm Lock Washers
- (4) 10mm Flat Washers
- (4) 8mm x 35mm Bolts
- (4) 10mm Flag Nuts

4-Door Kit Hardware:

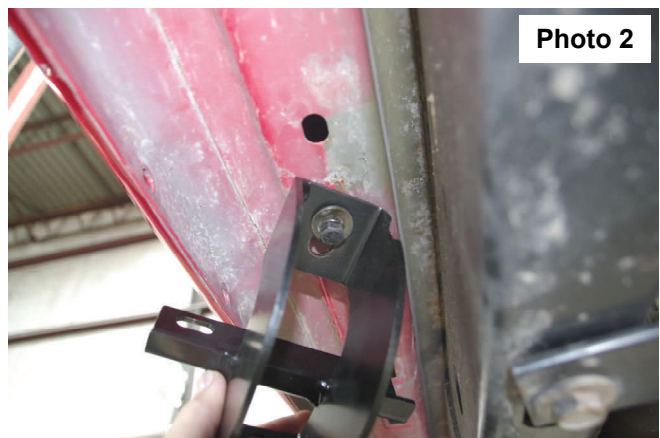
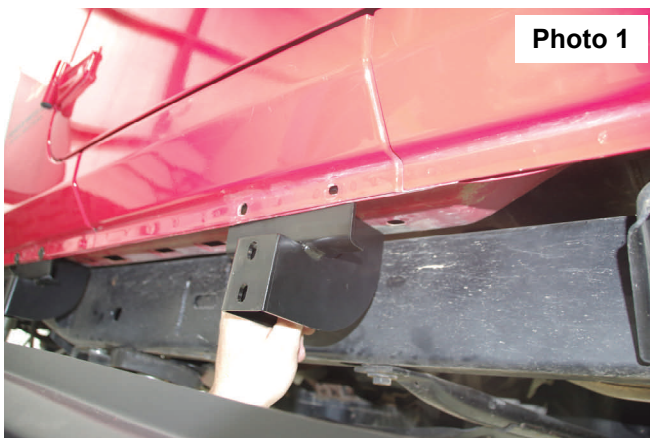
- (6) Mounting Brackets
- (12) 6mm x25mm Bolts
- (24) 6mm Flat Washers
- (12) 6mm Lock Nuts
- (6) 8mm x 30mm Bolts
- (18) 8mm Flat Washers
- (12) 8mm Lock Washers
- (6) 8mm Lock nuts
- (6) 8mm Flag Bolts
- (6) 8mm Plastic Retainers
- (6) 10mm x 35mm Bolts
- (6) 10mm Lock Washers
- (6) 10mm Flat Washers
- (6) 8mm x 35mm Bolts
- (6) 10mm Flag Nuts

Tools Needed:

- 10mm Socket
- 10mm Wrench
- 13mm Socket
- 17mm Socket
- Ratchet
- Torque Wrench

Installation Instructions

1. Remove factory step if equipped.
2. Place supplied mounting brackets on pinch weld and floor pan, aligning with existing holes. 2-door models will use 4 brackets per vehicle and 4-door models will use 6 brackets per vehicle. **See Photo 1.**
3. If holes in floor pan are threaded, attach using the supplied 10mm bolts and hardware. If holes are not threaded use the supplied 10mm x 35 bolts, hardware and 10mm flag nuts. **Do Not Tighten. See Photo 2.**



4. Attach the brackets to the pinch weld using the supplied 6mm x 25mm bolts and hardware. **See Photo 3.**
5. Tighten the bolts going through the pinch weld using 10mm wrenches **See Photo 4.**



Photo 3

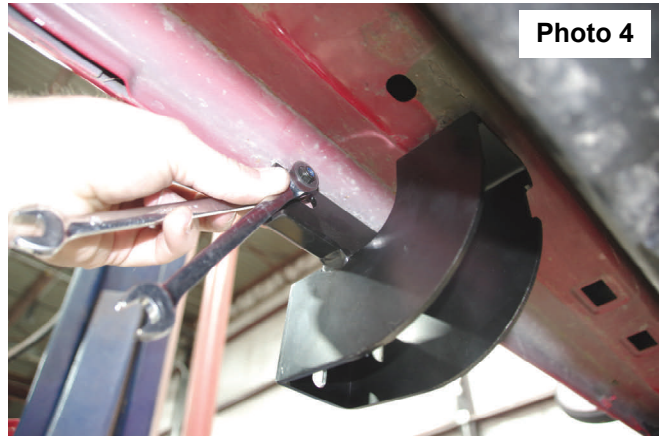


Photo 4

6. Tighten the bolts going into the floor pan using either a 13mm socket or a 17mm socket. **See Photo 5.**
7. Using the supplied 8mm x 30mm bolt/8mm nut plate (use the 8mm plastic retainers to hold the bolt/nut plate) and hardware, attach the step to the mounting brackets. **Do Not Tighten.** **See Photos 6 & 7.**
8. Position the step and tighten all hardware. Torque all fasteners according to the chart below.
9. Repeat process for the opposite side of the vehicle.



Photo 5



Photo 6



Photo 7

Torque Specs

Thread Size	Wrench Size	Torque Spec
6mm	10mm	8 ft/lb
8mm	13mm	18 ft/lb
10mm	17mm	37 ft/lb
12mm	18mm	65 ft/lb

By purchasing any item sold by Rough Country, LLC, the buyer expressly warrants that he/she is in compliance with all applicable , State, and Local laws and regulations regarding the purchase, ownership, and use of the item. It shall be the buyers responsibility to comply with all Federal, State and Local laws governing the sales of any items listed, illustrated or sold. The buyer expressly agrees to indemnify and hold harmless Rough Country, LLC for all claims resulting directly or indirectly from the purchase, ownership, or use of the items.

