



www.skyjacker.com

Jeep Gladiator JT 3.5" Suspension Lift Installation Instructions

Required Tools List:

- SAE & SAE Hex Key Sockets \ Wrenches (7/32" hex key socket, 7/16", 1/2", 9/16", 13/16", 3/4" & 1-18" Wrench)
- Metric Sockets \ Wrenches (6mm, 13mm, 15mm, 18mm, 19mm, 21mm, 22mm & 24mm)
- Jack Stands • Floor Jack
- Pliers • Diagonal Cutting Pliers
- Measuring Tape • Phillips Screw Driver
- Torque Wrench • Ball Peen Hammer
- Safety Glasses • Paint Marker



Before beginning the installation, read these instructions & the enclosed driver's WARNING NOTICE thoroughly & completely. Also affix the WARNING decal in the passenger compartment in clear view of all occupants. Please refer to the Parts List to insure that all parts & hardware are received prior to disassembly of the vehicle. If any parts are found to be missing, contact SKYJACKER® Customer Service at 318-388-0816 to obtain the needed items. If you have any questions or reservations about installing this product, contact SKYJACKER® Technical Assistance at 318-388-0816.

Make sure you park the vehicle on a level concrete or asphalt surface. Many times a vehicle is not level (side-to-side) from the factory, but is usually not noticed until a lift kit has been installed which makes the difference more visible. Using a measuring tape, measure the front & rear (both sides) from the ground up to the center of the fender opening above the axle. Record this information below for future reference.

Driver Side Front: _____

Passenger Side Front: _____

Driver Side Rear: _____

Passenger Side Rear: _____

Important Notes:

- After installation, the drag link must be adjusted to center the steering wheel before the vehicle is driven. Failure to do so will cause computer errors, odd handling characteristics & poor performance.
- If larger tires (10% more than the OEM diameter) are installed, speedometer recalibration will be necessary. Contact your local Jeep dealer or an authorized dealer for details.
- After installation, a qualified alignment facility is required to align the vehicle to the OEM specifications.

Component Box Breakdown:

Part #: G350PELT (Non-RUBICON)

Item #	Description	Qty
G24FS-DR	FRONT DUAL RATE COIL	2
JTG20RMS-S	REAR METAL COIL SPACER	2
JL24LLFD-L	LOWER FRONT DRV LINK	1
JL24LLFP-L	LOWER FRONT PASS LINK	1
JLFTBA18-B	FRONT ADJUST TRACK BAR	1
34RFTJN	3/4 RIGHT HAND JAM NUT	1
HD34X34DTB	3/4 HEAVY DUTY ROD END	1
H-BOX G350	HWDR BOX: G350 / G351 KITS	1

Component Box Breakdown:

Part #: G351PELT (Non-RUBICON)

Item #	Description	Qty
G24FS-DR	FRONT DUAL RATE COIL	2
G210RS-DR	REAR DUAL RATE COIL 21.0"	1
G215RS-DR	REAR DUAL RATE COIL 21.5"	1
JL24LLFD-L	LOWER FRONT DRV LINK	1
JL24LLFP-L	LOWER FRONT PASS LINK	1
JLFTBA18-B	FRONT ADJUST TRACK BAR	1
34RFTJN	3/4 RIGHT HAND JAM NUT	1
HD34X34DTB	3/4 HEAVY DUTY ROD END	1
H-BOX G350	HWDR BOX: G350 / G351 KITS	1

Hardware Box Breakdown:

Part # H-BOX G350

Item #	Description	Qty
JL25SEF-S	FRONT SHOCK EXTENSION BRKT	2
JTG20RBS-S	REAR BUMP STOP BRACKET	2
JTG25RSE-S	REAR SHOCK EXTENSION BRKT	2
SBE4048-L	FRONT SWAY BAR END LINK	2
SBE506-L	REAR SWAY BAR END LINK	2
HB-ABSS2535	HDWR BAG: FRT BUMP STOPS	1
HB-JL24LLF	HDWR BAG: FRT LOWER LINKS	1

Hardware Bag Breakdown:

Part # HB-ABSS2535

Item #	Description	Qty
ABSS2535	FRONT BUMP STOP SPACER	2
38X412BHB	3/8 X 4-1/2 BUTTON HEAD BOLT	2

Part # HB-JL24LLF

Item #	Description	Qty
14X1FTB	1/4 X 1 FINE THREAD BOLT	2
14SAEW	1/4 SAE WASHER	4

Part # HB-JLFTBB

Item #	Description	Qty
JLFTBB	ROD END BUSHING 0.563 ID	2

I-G351 11-21

Component Box Breakdown:

Part #: G350RPELT (RUBICON)

Item #	Description	Qty
JL23HDFS-DR	FRONT HD DUAL RATE COIL	2
JTG20RMS-S	REAR METAL COIL SPACER	2
JL24LLFD-L	LOWER FRONT DRV LINK	1
JL24LLFP-L	LOWER FRONT PASS LINK	1
JLFTBA18-B	FRONT ADJUST TRACK BAR	1
34RFTJN	3/4 RIGHT HAND JAM NUT	1
HD34X34DTB	3/4 HEAVY DUTY ROD END	1
H-BOX G350	HWDR BOX: G350 / G351 KITS	1

Component Box Breakdown:

Part #: G351RPELT (RUBICON)

Item #	Description	Qty
JL23HDFS-DR	FRONT HD DUAL RATE COIL	2
G215RS-DR	REAR DUAL RATE COIL 21.5"	1
G220RS-DR	REAR DUAL RATE COIL 22.0"	1
JL24LLFD-L	LOWER FRONT DRV LINK	1
JL24LLFP-L	LOWER FRONT PASS LINK	1
JLFTBA18-B	FRONT ADJUST TRACK BAR	1
34RFTJN	3/4 RIGHT HAND JAM NUT	1
HD34X34DTB	3/4 HEAVY DUTY ROD END	1
H-BOX G350	HWDR BOX: G350 / G351 KITS	1

Item #	Description	Qty
HB-JLFTBB	HDWR BAG: FRT TRACK BAR	1
HB-JLSEF	HDWR BAG: FRT SHOCK EXT	1
HB-JTGRBS	HDWR BAG: REAR BUMP STOPS	1
HB-JTGRSE	HDWR BAG: REAR SHOCK BRKT	1
HB-JTGSBER	HDWR BAG: REAR END LINKS	1
HB-SBENB03	HDWR BAG: FRONT END LINKS	1
I-G351	INST SHEET: G350E / G351E KITS	1

Item #	Description	Qty
38SAEW	3/8 SAE WASHER	2
38CTN	3/8 COARSE THRD N/I LOCK NUT	2

Item #	Description	Qty
14FTN	1/4 FINE THREAD N/I LOCK NUT	2

Part # HB-JLSEF

Item #	Description	Qty
411481	CRUSH SLEEVE / 1.62" LONG	2
38X1FTB	3/8 X 1 FINE THREAD BOLT	2
38SAEW	3/8 SAE WASHER	4
38FTN	3/8 FINE THREAD N/I LOCK NUT	2

Item #	Description	Qty
12X312FTB	1/2 X 3-1/2 FINE THREAD BOLT	2
12SAEW	1/2 SAE WASHER	4
12FTN	1/2 FINE THREAD N/I LOCK NUT	2

Part # HB-JTGRBS

Item #	Description	Qty
516X1FTB	5/16 X 1 FINE THREAD BOLT	4
516SAEW	5/16 SAE WASHER	4

Item #	Description	Qty
516FTN	5/16 FINE THREAD N/I LOCK NUT	4

Part # HB-JTGRSE

Item #	Description	Qty
CS1172	CRUSH SLEEVE 1.172" LONG	2
12X1CTB	1/2 X 1 COARSE THREAD BOLT	2
12SAEW	1/2 SAE WASHER	2

Item #	Description	Qty
916X3FTB	9/16 X 3 FINE THREAD BOLT	2
916SAEW	9/16 SAE WASHER	4
916FTN	9/16 FINE THREAD N/I LOCK NUT	2

Part # HB-JTGSBER

Item #	Description	Qty
HG58125-K	BLACK HOURGLASS BUSHING	4
403712	CRUSH SLEEVE 1.25" LONG	4
12X65MMB	12MM X 65 METRIC BOLT	2

Item #	Description	Qty
716USSW	7/16 USS FLAT WASHER	6
12MMN	12MM METRIC N/I LOCK NUT	2

Part # HB-SBENB03

Item #	Description	Qty
141509	CRUSH SLEEVE 1.50" LONG	4
12X70MMB	12MM X 70MM METRIC BOLT	2

Item #	Description	Qty
716USSW	7/16 USS FLAT WASHER	4
12MMN	12MM METRIC N/I LOCK NUT	2

Front Installation:

1. With the vehicle on flat level ground, set the emergency brake & block the rear tires\wheels.
2. Raise the front of the vehicle, support the frame rails & front differential using jack stands.
3. Remove the front tires\wheels using a 22mm socket.
4. Remove the OEM front skid plate using a 13mm socket \wrench. (See Photo # 1)
5. Remove the OEM front sway bar end links using a 6mm hex key socket \wrench & 18mm socket \wrench. (See Photo # 2)
6. Remove the OEM front track bar using a 21mm socket \wrench. (See Photo # 3)

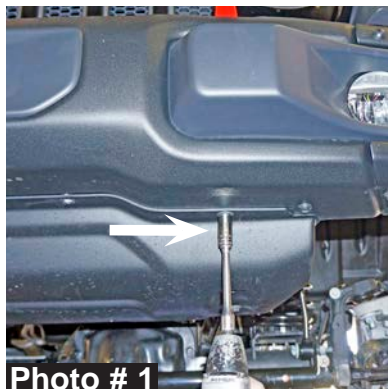


Photo # 1
I-G351 11-21

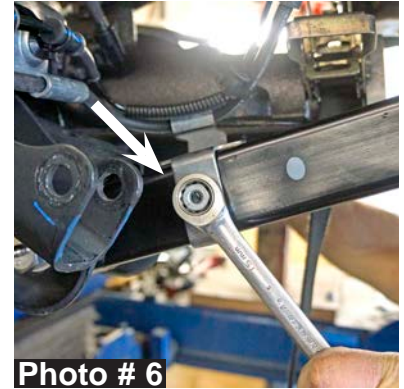


Photo # 2

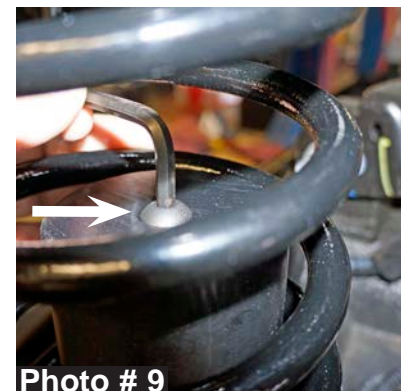
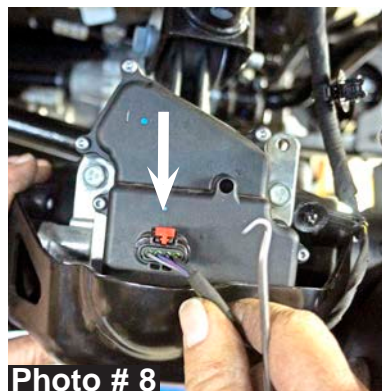


Photo # 3

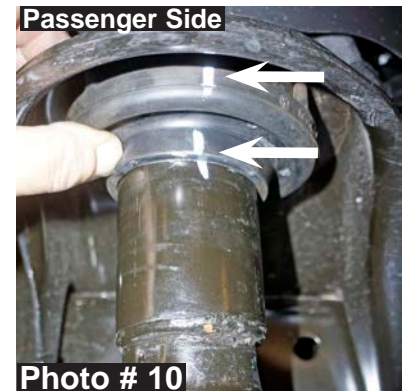
7. Disconnect the OEM drag link from the OEM pitman arm using a 21mm socket \ wrench. (See Photo # 4)
8. Disconnect the OEM front shocks at the lower mount using a 21mm socket \ wrench. (See Photo # 5)
9. Disconnect the OEM front brake line brackets from the OEM front lower control arms using a 15mm socket \ wrench. (See Photo # 6)



10. Mark the location of the OEM front driveshaft \ flange at the front differential & disconnect using a 15mm socket \ wrench. (See Photo # 7)
11. Disconnect the wiring harness from the passenger side OEM front upper control arm using pliers.
12. Disconnect the wiring harness from the OEM 4WD actuator. (See Photo # 8)
13. Disconnect the OEM vent hose from the front differential using pliers.
14. While checking for appropriate slack in ABS lines, brake lines, differential vent hose & etc. Lower the front differential & remove the OEM front coil springs.
15. Install the new Skyjacker front coil springs & new Skyjacker front bump stop spacers to the OEM front bump stop pads using the supplied 3/8" x 4-1/2" button head bolts, 3/8" washers, 3/8" nuts, a 7/32" hex key socket \ wrench & 9/16" socket \ wrench. (See Photo # 9) **Note:** Be sure when installing the new front coil springs that the tab of each OEM front upper coil spring isolator aligns with the hole of each OEM front upper coil spring mount.



16. Raise the front differential in order to load the new Skyjacker front coil springs. **Note:** There has been occasional reports of the passenger side coil spring having an inward bow after installation on taller lifts. If so, the OEM upper coil spring isolator can be rotated 180 degrees. Mark the OEM position of the passenger side OEM upper coil spring isolator. Remove the two alignment pins on top of the passenger side OEM upper coil spring isolator using diagonal cutting pliers or similar tool. Rotate the passenger side OEM upper coil spring isolator so the thicker portion is on the inside toward the frame. (See Photo # 10)



17. Connect the OEM front driveshaft using the OEM hardware & a 15mm socket \ wrench. (See Photo # 7)

18. Connect the OEM drag link to the OEM pitman arm using the OEM hardware & a 21mm socket \ wrench. (See Photo # 4)

19. Connect the OEM vent hose to the front differential using pliers.

20. Connect the wiring harness to the OEM 4WD actuator. (See Photo # 8)

21. Connect the wiring harness to the passenger side OEM front upper control arm.

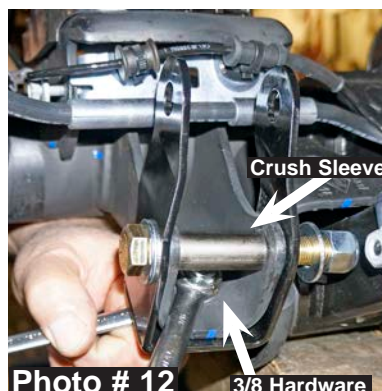
22. One at a time, remove the OEM front lower control arms & install the new Skyjacker front lower control arms using the OEM hardware, a 21mm socket \ wrench & 24mm socket \ wrench.

Note: Install the new front lower control arms with the offset bend toward the inside of the vehicle.

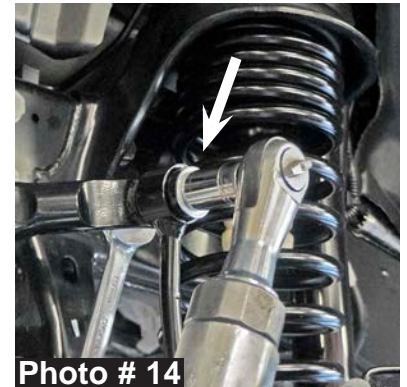
23. Connect the OEM front brake line brackets to the new Skyjacker front lower control arms using the supplied 1/4" x 1" bolts, 1/4" washers, 1/4" nuts & a 7/16" socket \ wrench. (See Photo # 11)

24. Install the new Skyjacker front lower shock extension brackets to the OEM front lower shock mounts with the upper mounting holes offset towards the front of the vehicle using the supplied 3/8" x 1" fine thread bolts, 3/8" SAE washers, 3/8" fine thread nuts, crush sleeves, 1/2" x 3-1/2" fine thread bolts, 1/2" SAE washers, 1/2" fine thread nuts, a 9/16" socket \ wrench & 3/4" socket \ wrench. (See Photo # 12)

25. Connect the OEM front shocks to the new Skyjacker front lower shock extension brackets using the OEM hardware & a 21mm socket \ wrench. (See Photo # 13)



26. Install the new Skyjacker front sway bar end links using the supplied steel sleeves, 12mm x 70mm bolts, 7/16" USS washers, 12mm nuts, OEM hardware, a 18mm socket \ wrench & 19mm socket \ wrench. (See Photo # 14) **Note:** On the driver side of the vehicle, install the OEM lower bolt with the large washer to the bushing side of the new front sway bar end link.



27. Install the OEM front skid plate using the OEM hardware & a 13mm socket \ wrench. (See Photo # 1)

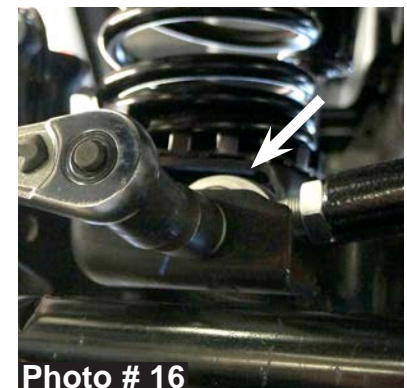
28. Install the front tires \ wheels using a 22mm socket & lower the front of the vehicle to the ground.

29. Install the fixed end of the new Skyjacker adjustable front track bar to the frame using the OEM hardware & a 21mm socket \ wrench. (See Photo # 15) **Note:** Do not tighten at this time.



30. Using a measuring tape, check the front of the vehicle to make sure the body is centered over the front tires \ wheels & adjust the new Skyjacker rod end to align with the lower track bar mounting location.

31. Install the adjustable end of the new Skyjacker adjustable front track bar to the front differential using the supplied rod end bushings, OEM hardware & a 21mm socket \ wrench. (See Photo # 16) **Note:** Fully tighten the OEM hardware at this time.



32. Tighten the supplied jam nut of the new Skyjacker adjustable front track bar using a 1-1/8" wrench.

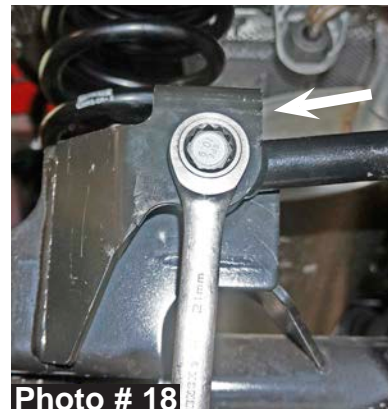
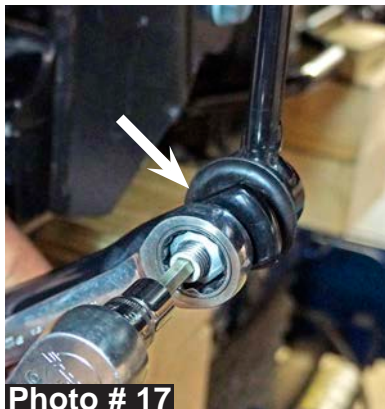
Rear Installation:

1. Block the front tires \ wheels, raise the rear of the vehicle, support the frame rails & rear differential using jack stands.

2. Remove the rear tires \ wheels using a 22mm socket.

3. Remove the OEM rear sway bar end links using a 6mm hex key socket \ wrench & 18mm socket \ wrench. (See Photo # 17)

4. Disconnect the OEM rear track bar from the rear differential using a 21mm socket \ wrench. (See Photo # 18)



5. Disconnect the OEM rear shocks at the lower shock mounts using a 21mm socket \ wrench. (See Photo # 19)
6. While checking for appropriate slack in ABS lines, brake lines, differential vent hose & etc. Lower the rear differential & remove the OEM rear coil springs.
7. Install the new Skyjacker rear bump stop spacers to the OEM rear bump stop pads using the supplied 5/16" x 1" bolts, 5/16" washers, 5/16" nuts & 1/2" wrenches. (See Photo # 20) **Note:** Install the new rear bump stop spacers with the forward angle toward the front of the vehicle.
8. **G350PELT & G350RPELT Kits:** Install the new Skyjacker rear coil spring spacers to the OEM rear coil spring mounts using the supplied 1/4" x 3/4" bolts & a 7/16" wrench. (See Photo # 21)
9. **G350PELT & G350RPELT Kits:** Install the OEM rear coil spring isolators & OEM rear coil springs. **Note:** Be sure when installing the OEM rear coil spring isolators that the tab of each OEM rear upper coil spring isolator aligns with the hole of each new Skyjacker rear coil spring spacer.

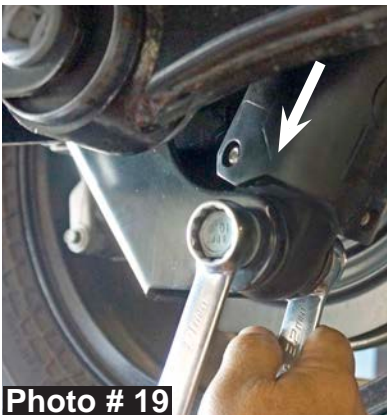


Photo # 19



Photo # 20

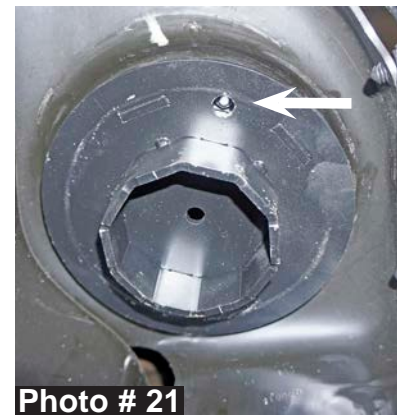
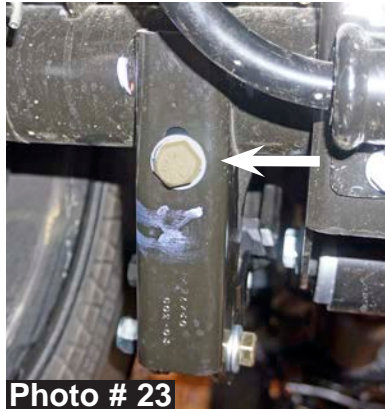


Photo # 21

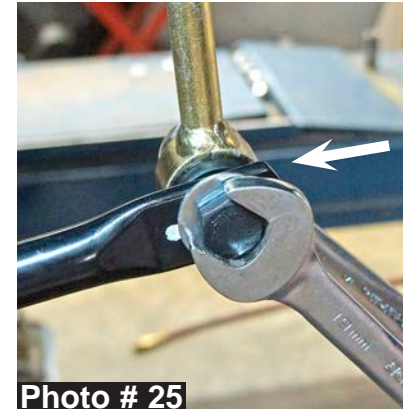
10. **G351PELT & G351RPELT Kits:** Install the new Skyjacker 2-Stage Variable Rate rear coil springs. **Note:** The new rear coil springs are two different lengths. The new taller rear coil spring is to be installed on the side of the vehicle in which the OEM fuel tank is installed & the new shorter rear coil spring is to be installed on the opposite side of the vehicle. **Note:** Be sure when installing the new rear coil springs that the tab of each OEM rear upper coil spring isolator are aligns with the hole of the OEM rear upper coil spring mount.
11. Install the new Skyjacker rear lower shock extension brackets to the OEM rear lower shock mounts using the supplied 9/16" x 3" fine thread bolts, 9/16" SAE washers, 9/16" fine thread nuts, crush sleeves & 13/16" & 7/8" socket \ wrench. (See Photo # 22)
12. At the rear of the OEM shock mount bracket, utilize the factory oval hole to attach the Skyjacker bracket using the supplied 1/2" x 1" fine thread bolts, 1/2" SAE washers & 3/4" socket \ wrench. (See Photo # 23) **Note:** The Skyjacker bracket has a nut attached.
13. Connect the OEM shocks to the new Skyjacker shock brackets using the OEM hardware & a 21mm socket \ wrench. (See Photo # 24)



14. Install the new Skyjacker rear sway bar end links using the supplied polyurethane bushings, steel sleeves, 12mm x 65mm bolts, 7/16" USS washers, 12mm nuts, OEM upper hardware, a 18mm socket \ wrench & 19mm socket \ wrench. (See Photo # 25)

15. Install the rear tires \ wheels using a 22mm socket & lower the rear of the vehicle to the ground.

16. Connect the OEM rear track bar to the rear differential using the OEM hardware & a 21mm socket \ wrench. (See Photo # 18)



Final Notes:

- After the installation is complete, double check that all nuts & bolts are tight. Refer to the following chart for the proper torque specifications. (**Note:** Do not retighten the nuts & bolts where thread lock compound was used.)
- With the vehicle placed on the ground, cycle the steering lock to lock & inspect the steering, suspension, brake lines, front & rear drivelines, fuel lines & wiring harnesses for proper operation, tightness & adequate clearance.
- Have the headlights readjusted to the proper settings.
- Have a qualified alignment center align the vehicle to the OEM specifications.
- After the first 100 miles, check all hardware for the proper torque & periodically thereafter.

TORQUE SPECIFICATIONS					
INCH SYSTEM			METRIC SYSTEM		
Bolt Size	Grade 5	Grade 8	Bolt Size	Class 8.8	Class 10.9
5/16	15 FT LB	20 FT LB	6MM	5 FT LB	9 FT LB
3/8	30 FT LB	35 FT LB	8MM	18 FT LB	23 FT LB
7/16	45 FT LB	60 FT LB	10MM	32 FT LB	45 FT LB
1/2	65 FT LB	90 FT LB	12MM	55 FT LB	75 FT LB
9/16	95 FT LB	130 FT LB	14MM	85 FT LB	120 FT LB
5/8	135 FT LB	175 FT LB	16MM	130 FT LB	165 FT LB
3/4	185 FT LB	280 FT LB	18MM	170 FT LB	240 FT LB

• The above specifications are not to be used when the bolt is being installed with a bushing.

Seat Belts Save Lives, Please Wear Your Seat Belt.

Optional HD OEM Replacement Steering Stabilizers Available:

- 7008 HD OEM Replacement Steering Stabilizer - White Steering Damper
- 8008 HD OEM Replacement Steering Stabilizer - Black Steering Damper
- 9008 HD OEM Replacement Steering Stabilizer - Silver Steering Damper

Optional Dual Steering Stabilizer Kits Available:

- 7208 Dual Steering Stabilizer Kit - White Steering Dampers
- 8208 Dual Steering Stabilizer Kit - Black Steering Dampers
- 9208 Dual Steering Stabilizer Kit - Silver Steering Dampers

Optional Front / Rear Adjustable Track Bars Available:

- JTGRTBA20 Rear Adjustable Track Bar / 1"- 6.5" Lift

Optional HD Front / Rear Upper & Lower Control Arms Available:

- GULR24 HD Rear Upper Control Arms - Set / 1"- 6.5" Lift
- JLL24F-SX Single Flex Front Lower Control Arms - Pair / 1"- 6.5" Lift
- GLL24R-SX Single Flex Rear Lower Control Arms - Pair / 1"- 6.5" Lift
- JLULF26-SX Single Flex Front Upper Control Arms - Pair / 1"- 6.5" Lift
- GULR24-SX Single Flex Rear Upper Control Arms - Pair / 1"- 6.5" Lift

Optional Accessories:

- SBE4258 Front Double Disconnect Sway Bar End Links / 3.5"- 6" Lift



Jesus Christ Died For You.

John 3:16

For God so loved the world that He gave His only Son, so that everyone who believes in Him should not perish, but have everlasting life.
Romans 3:23

For all have sinned; all fall short of God's glorious standard.
Ephesians 2:8

God saved you by his special favor when you believed. And you can't take credit for this; it is a gift from God.
Psalms 18:2

The Lord is my Rock, my fortress, and my savior; my God is my Rock, in whom I find protection. He is my shield, the strength of my salvation, and my stronghold.
Romans 10:9-10

That if you shall confess with thy mouth the Lord Jesus, and shall believe in your heart that God hath raised him from the dead, you shall be saved. For with the heart man believeth unto righteousness; and with the mouth confession is made unto salvation.

Pray This Simple Prayer:

God, I come to You admitting I have sinned against You and I need you to take control of my life. The Bible says anyone who calls on the name of the Lord will be saved. I am calling on You, Jesus. I ask that You come live in my heart and be the Lord over my life today. I do believe You died on the cross for me and came back to life to give me life! Thank You, Lord Jesus for a new life in You!

Now, go and tell somebody about your new life in Jesus, get a Bible, begin to read it, and go to a Bible believing church.

If you would like someone to pray with you, call Kenneth Copeland Ministries anytime at 800-600-7395.

To listen to commercial free Christian radio on the web, go to www.887fm.org

Jesús murió por ti.

Juan 3:16

“Porque tanto amó Dios al mundo, que dio a su Hijo unigénito, para que todo el que cree en él no se pierda, sino que tenga vida eterna.”
Romanos 3:23

“Pues todos han pecado y están privados de la gloria de Dios.”
Efesios 2:8

“Porque por gracia ustedes han sido salvados mediante la fe; esto no procede de ustedes, sino que es el regalo de Dios.”
Salmos 18:2

“El Señor es mi roca, mi amparo, mi libertador; es mi Dios, el peñasco en que me refugio. Es mi escudo, el poder que me salva, ¡mi más alto escondite!”
Romanos 10:9-10

“9 Que si confi esas con tu boca que Jesús es el Señor, y crees en tu corazón que Dios lo levantó de entre los muertos, serás salvo. 10 Porque con el corazón se cree para ser justifi cado, pero con la boca se confi esa para ser salvo.”

Ahora dí esta simple oración:

Dios, vengo a Ti y admito que he pecado contra Ti, necesito que tomes el control de mi vida. La Biblia dice que todo aquel que invoca el nombre del Señor escapará con vida. En este momento yo clamo ante Ti, Jesús; te pido que vengas a vivir en mi corazón y que tomes el control de mi vida. ¡Yo creo que tu moriste en la cruz y resucitaste para darme vida! ¡Gracias Señor Jesús, por una nueva vida que tengo en Ti! Amen.

Ahora ve y dile a alguien sobre la nueva vida que tienes en Cristo. Compra una Biblia y empieza a leerla. Busca una Iglesia que cree en la Biblia y hazte parte de esa Iglesia.

Si te gustaría orar con alguien, puedes llamar a este número 800-600-7395

Puedes ir a este sitio de Internet para escuchar música Cristiana sin anuncios, www.887fm.org

Check out our favorite ministries at:

www.innministries.org

www.familychurch.org

www.kcm.org

