

# SKYJACKER

## SUSPENSIONS

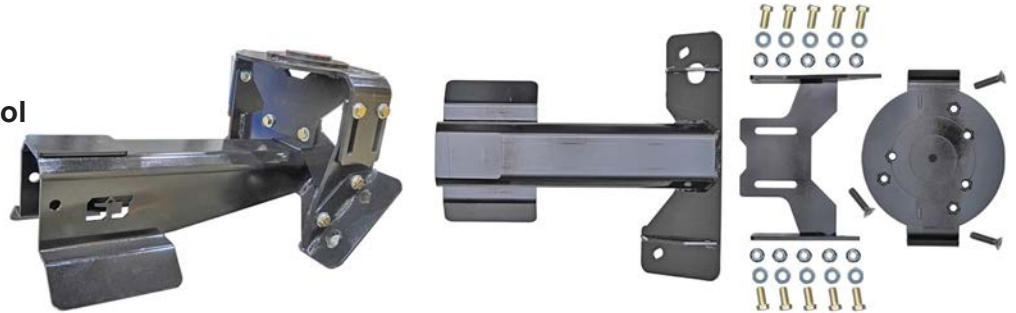
SKYJACKER.COM

Jeep Wrangler JL  
Rubicon & Non-Rubicon 4-Door Models  
2007-2018 Jeep Wrangler JK  
Rubicon & Non-Rubicon 4-Door Models

### Spare Tire Carrier Installation Instructions

#### Required Tools List:

- SAE Hex Key & Sockets \ Wrenches (5/16" Hex Key, & 9/16")
- Metric Sockets \ Wrenches (13mm, & 18mm Deep Well)
- Plastic Fastener Removal Tool
- T40 Torx Bit
- Spirit \ Bubble Level Tool
- Safety Glasses
- Torque Wrench



Before beginning the installation, read these instructions thoroughly & completely. Please refer to the Parts List to insure that all parts & hardware are received prior to disassembly of vehicle. If any parts are found to be missing, contact SKYJACKER® Customer Service at 318-388-0816 to obtain the needed items. If you have any questions or reservations about installing this product, contact SKYJACKER® Technical Assistance at 318-388-0816.

#### Important Notes:

- Designed to Fit OEM Factory Tires Up To 42" Diameter Tires.
- Designed to Fit Wheel Lug Patterns: OEM (5x5" \ 5x127mm) & Dana 60 (8x6.5" \ 8x165.1mm).
- Not Designed for 2-Door Models.
- Not Designed for 4XE Models.
- Not Designed for Rear Bench Seat Models.

#### Component Box Breakdown:

##### Part # J07STM

Item #	Description	Qty
J07STM-A	LOWER BRACKET	1
J07STM-B	CENTER BRACKET	1
J07STM-C	UPPER BRACKET	1
HB-J07STM	HDWR BAG: FOR # J07STM	1

#### Hardware Bag Breakdown:

##### Part # HB-J07STM

Item #	Description	Qty
1/2X2FSB	1/2 X 2 FLAT SOCKET BOLT	3
38X1FTB	3/8 X 1 FINE THREAD BOLT	10
38FSFTN	3/8 SERRATED FLANGE NUT	10
38SAEW	3/8 SAE WASHER	10



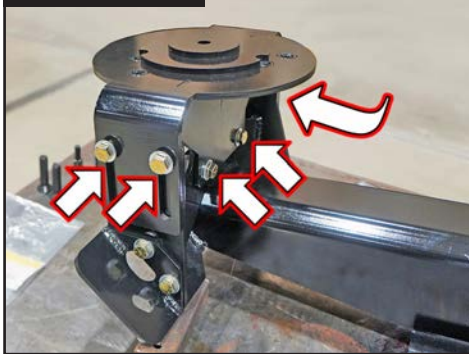
## **Pre-Installation Tips: Assemble Spare Tire Carrier.**

1. Locate Skyjacker # J07STM-A Lower Bracket & Skyjacker # J07STM-C Center Bracket.  
Attach Center Bracket & Lower Bracket four (4) mounting holes with supplied 3/8" SAE Washer & 3/8" x 1" Bolt from outside-to-inside. Attach with supplied 3/8" Flange Nut using a 9/16" socket \ wrench. (Photo # 1 & # 3) Torque 35 ft-lbs.
2. Locate Skyjacker # J07STM-C Upper Bracket.  
Attach Upper Bracket & Center Bracket six (6) mounting slots with supplied 3/8" SAE Washer & 3/8" x 1" Bolt from outside-to-inside. Attach with supplied 3/8" Flange Nut using a 9/16" socket \ wrench. (Photo # 2 & # 3) Secure, but **Do Not Completely Tighten**.

**Photo # 1**



**Photo # 2**



**Photo # 3**



3. Position your spare tire \ wheel onto flat level ground. **Note:** Position spare tire \ wheel with outside face of wheel facing down. (Photo # 4)  
Position Skyjacker Spare Tire Carrier Assembly onto your spare tire with Upper Bracket flush with wheel hub. (Photo # 4) Position Lower Bracket onto spare tire sidewall. (Photo # 4)
4. Position a spirit \ bubble level on top of Lower Bracket. (Photo # 5) Adjust Lower Bracket up until level vile bubble is centered. (Photo # 5 & # 6) Secure, but **Do Not Completely Tighten**.

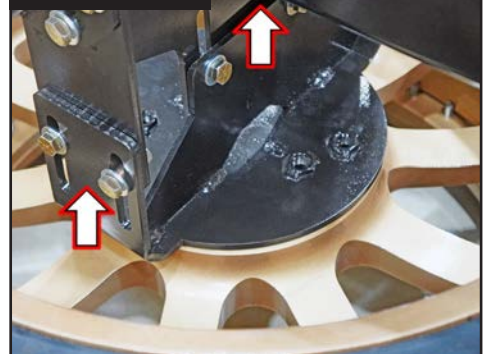
**Photo # 4**



**Photo # 5**

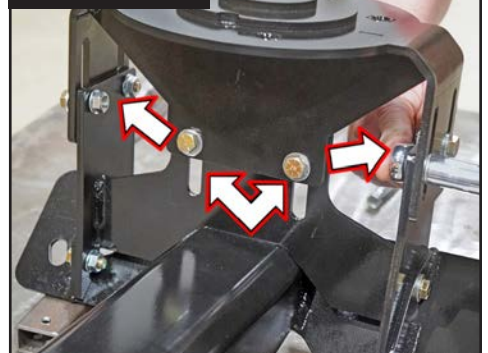


**Photo # 6**



5. Tighten six (6) mounting slots using a 9/16" socket \ wrench. (Photo # 7) Torque 35 ft-lbs.

**Photo # 7**





**Installation: Note: Save all factory components & hardware for reuse, unless noted.**

1. If equipped with OEM second row seat gap cover, it must be removed.

Slide OEM rear cargo panel back \ out to gain access to OEM cargo area carpet gap cover.

Separate gap cover from gap cover mounting bracket by separating all interlocking clips using a plastic fastener removal tool. (Photo # 8 & # 9) Remove gap cover.



2. Remove gap cover mounting bracket from floor board mounts. Remove two (2) outer side OEM nuts using an 18mm deep well socket \ wrench. (Photo # 10 & # 11)

Remove center OEM bolt using an 18mm socket \ wrench. (Photo # 10 & # 11) Remove mounting bracket.



3. To be able to open doors as wide as possible, first open OEM interior cover using a plastic fastener removal tool. (Photo # 12)

Next, remove OEM door check strap from loop hinge. (Photo # 12)

Remove OEM rear door check assembly bolt using a T40 Torx bit. (Photo # 12)

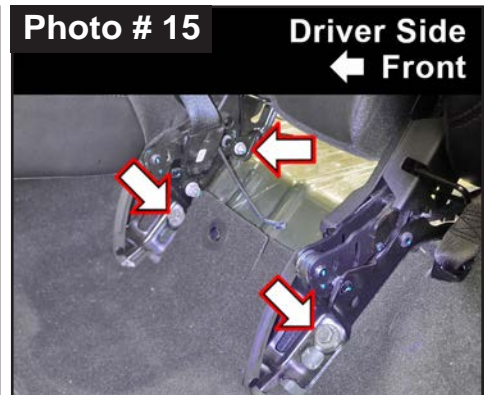
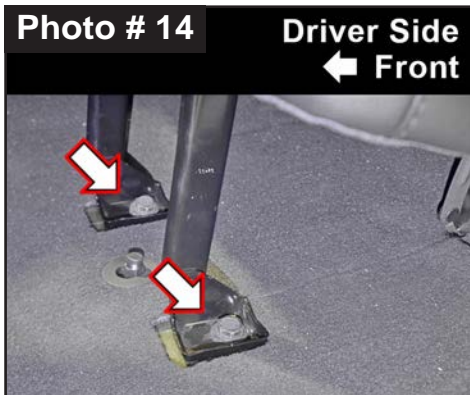


4. If equipped with rear floor liner, unclip floor liner from floorboard clips & remove floor liner. (Photo # 13)

5. Remove each OEM seat mount bolt from each driver side front leg mount using an 18mm socket \ wrench.

(Photo # 14) Flip seat up & remove each OEM seat mount bolt from rear leg mounts using an 18mm socket \ wrench. (Photo # 15) **Note:** Retain inner OEM bolt for Spare Tire Carrier Assembly installation.

Remove OEM seat connector nut using a 13mm socket \ wrench. (Photo # 15)





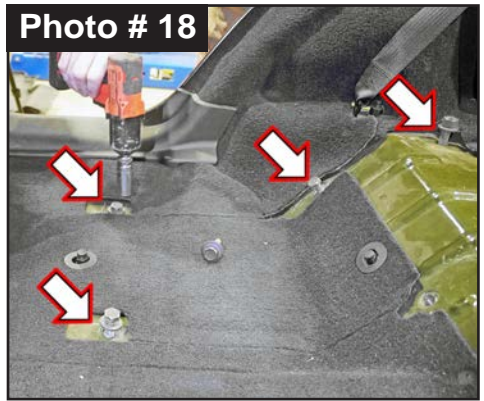
6. Remove each OEM seat mount bolt from each passenger side front leg mount using an 18mm socket \ wrench. (Photo # 16) Flip seat up & remove OEM seat mount bolt from rear leg mount using an 18mm socket \ wrench. (Photo # 17) Remove OEM seat belt bolt using an 18mm socket \ wrench. (Photo # 17) **Note:** OEM seat belt bolt is longer than other bolts. Retain for Spare Tire Carrier Assembly installation.

**Tech Note:** Re-install OEM seat bolts, one (1) rear cargo bolt & two (2) nuts. (Photo # 18)

**Photo # 16 Passenger Side**  
➔ Front



**Photo # 17 Passenger Side**  
← Front

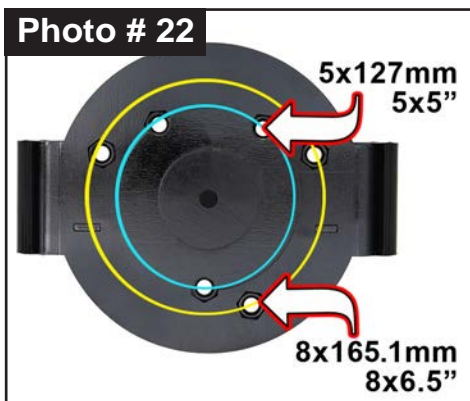
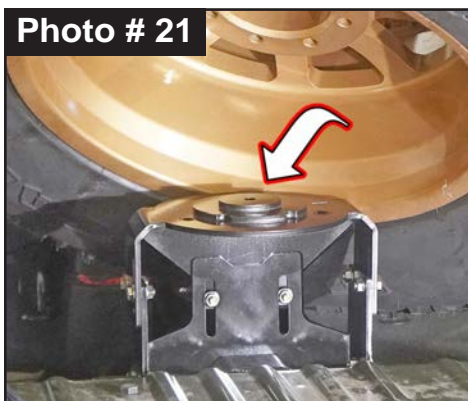


7. Install Skyjacker Spare Tire Carrier Assembly over center floorboard hump with OEM bolts using an 18mm socket \ wrench. (Photo # 19 & # 20) **Tech Note:** If removed, re-install OEM rear cargo panel.



8. Position spare tire \ wheel onto Skyjacker Spare Tire Carrier Assembly. (Photo # 21) **Note:** Position spare with outside face of wheel facing up.

Align wheel with proper bolt pattern. (Photo # 22) Attach spare tire \ wheel to Upper Bracket with three (3) supplied 1/2" x 2" Flat Socket Bolts using 5/16" hex key socket \ wrench. (Photo # 23)



9. Re-install OEM rear door check assembly OEM bolt using a T40 Torx bit. (Photo # 12) Reconnect OEM door check strap to loop hinge. Re-install OEM interior cover.