



www.skyjacker.com

Jeep JL RUBICON 392 3.5" Suspension Lift Installation Instructions



Required Tools List:

- **SAE & SAE Hex Key Sockets \ Wrenches**
(5/32", 7/32" & 5/16" Hex Key Sockets, 7/16", 1/2", 9/16", 3/4", 13/16", 7/8" & 1-1/8")
- **Metric & Metric Hex Key Sockets \ Wrenches**
(6mm Hex Key Socket, 8mm, 10mm, 13mm, 15mm, 18mm, 19mm, 21mm, 22mm & 24mm)
- **Measuring Tape** • **Ball Peen Hammer**
- **Safety Glasses** • **Wheel Chock**
- **Jack Stands** • **Floor Jack**
- **Pliers** • **Torque Wrench**

Before beginning installation, read these instructions & enclosed driver's WARNING NOTICE thoroughly & completely. Also affix WARNING decal in passenger compartment in clear view of all occupants. Please refer to Parts List to insure that all parts & hardware are received prior to disassembly of vehicle. If any parts are found to be missing, contact SKYJACKER® Customer Service at 318-388-0816 to obtain needed items. If you have any questions or reservations about installing this product, contact SKYJACKER® Technical Assistance at 318-388-0816.

Make sure you park vehicle on a level concrete or asphalt surface. Many times a vehicle is not level (side-to-side) from factory, but is usually not noticed until a lift kit has been installed which makes difference more visible. Using a measuring tape, measure front & rear (both sides) from ground up to center of fender opening above axle. Record this information below for future reference.

Driver Side Front: _____ / _____ BEFORE / AFTER	Passenger Side Front: _____ / _____ BEFORE / AFTER
Driver Side Rear: _____ / _____ BEFORE / AFTER	Passenger Side Rear: _____ / _____ BEFORE / AFTER

Important Notes:

- The Drag Link Must Be Adjusted to Center the Steering Wheel Before the Vehicle Is Driven. Failure to Do So Will Cause Computer Errors, Odd Handling Characteristics, & Poor Performance.
- If Larger Tires (10% More Than the OEM Diameter) Are Installed, Speedometer Recalibration Will Be Necessary. Contact Your Local JEEP Dealer or an Authorized Skyjacker® Dealer for Details.
- After Installation, a Qualified Alignment Facility Is Required to Align the Vehicle to the OEM Specifications.

Component Box Breakdown:**Part # JL35R3BPELT**

Item #	Description	Qty
JL34HDFS-DR	FRONT DUAL RATE COIL	2
JL23RS-DR-R	REAR DUAL RATE COIL 19.5"	1
JL34RS-DR-R	REAR DUAL RATE COIL 20.5"	1
JLFTBA18-B	ADJUSTABLE TRACK BAR, FRT	1
HD34X34DTB	HEAVY DUTY ROD END, 3/4	1
34RFTJN	RIGHT HAND JAM NUT, 3/4	1
JL35SEF-S	SHOCK EXTENSION BRKT, FRT	2
JL25SER-S	SHOCK EXTENSION BRKT, RR	2
H-BOX JL35R3E	HWDR BOX: JL35R3BPELT	1

Hardware Box Breakdown:**Part # H-BOX JL35R3E**

Item #	Description	Qty
ABSS2535	FRONT BUMPSTOP SPACER	2
CAM700	CAM BOLTS, UPPER REAR	1
CAM800	CAM BOLTS, LOWER FRONT	1
JK40RBS-S	BUMPSTOP, REAR	2
JLRTBU-B	TRACK BAR BRKT, UPPER REAR	1
SBE4048-L	SWAY BAR END LINK, FRONT	2
SBE4068-L	SWAY BAR END LINK, REAR	2
HB-JL2535SE	HDWR BAG: SHOCK EXT, FRT\RR	1
HB-JL40BSS	HDWR BAG: BUMPSTOP SPACERS	1
HB-JLBLE4	HDWR BAG: BRAKE LINE EXT.	1
HB-JLFTBB	HDWR BAG: TRACK BAR BRT, FRT	1
HB-JLRTBU	HDWR BAG: TRACK BAR BRT, RR	1
HB-JLUEB	HDWR BAG: E-BRAKE, UPPER	1
HB-SBENB03	HDWR BAG: END LINKS, FRT	1
HB-SBENB04	HDWR BAG: END LINKS, RR	1
I-JL35R3E	INST SHEET: JL35R3BPELT	1

Hardware Bag Breakdown:**Part # HB-JL2535SE**

Item #	Description	Qty
411481	CRUSH SLEEVE 1.62 LONG	4
12X114FTB	1/2 X 1-1/4 FINE THREAD BOLT	2
12X312FTB	1/2 X 3-1/2 FINE THREAD BOLT	4
12FTN	1/2 FINE THREAD N/I LOCK NUT	6
12SAEW	1/2 SAE WASHER	8
12USSW	1/2 USS WASHER	4
38X1FTB	3/8 X 1 FINE THREAD BOLT	2
38FTN	3/8 FINE THREAD N/I LOCK NUT	2
38SAEW	3/8 SAE WASHER	4

Part # HB-JLFTBB

Item #	Description	Qty
JLFTBB	ROD END BUSHING / 0.563 ID	2

Component Box Breakdown:**Part # JL35R3BLT**

Item #	Description	Qty
JL34HDFS-DR	FRONT DUAL RATE COIL	2
JL23RS-DR-R	REAR DUAL RATE COIL 19.5"	1
JL34RS-DR-R	REAR DUAL RATE COIL 20.5"	1
JLFTBA18-B	ADJUSTABLE TRACK BAR, FRT	1
HD34X34DTB	HEAVY DUTY ROD END, 3/4	1
34RFTJN	RIGHT HAND JAM NUT, 3/4	1
H-BOX JL35R3	HWDR BOX: JL35R3BLT	1

Part # JL3540X (ADX 2.0 SHOCKS)

Item #	Description	Qty
A2387	ADX 2.0 REMOTE RESERVOIR	2
A2389	ADX 2.0 REMOTE RESERVOIR	2

Hardware Box Breakdown:**Part # H-BOX JL35R3**

Item #	Description	Qty
ABSS2535	FRONT BUMPSTOP SPACER	2
CAM700	CAM BOLTS, UPPER REAR	1
CAM800	CAM BOLTS, LOWER FRONT	1
JK40RBS-S	BUMPSTOP, REAR	2
JLRTBU-B	TRACK BAR BRKT, UPPER REAR	1
SBE4048-L	SWAY BAR END LINK, FRONT	2
SBE4068-L	SWAY BAR END LINK, REAR	2
HB-JL40BSS	HDWR BAG: BUMPSTOP SPACERS	1
HB-JLBLE4	HDWR BAG: BRAKE LINE EXT.	1
HB-JLFTBB	HDWR BAG: TRACK BAR BRT, FRT	1
HB-JLRTBU	HDWR BAG: TRACK BAR BRT, RR	1
HB-JLUEB	HDWR BAG: E-BRAKE, UPPER	1
HB-SBENB03	HDWR BAG: END LINKS, FRT	1
HB-SBENB04	HDWR BAG: END LINKS, RR	1
I-JL35R3E	INST SHEET: JL35R3BLT	1

Hardware Bag Breakdown:**Part # HB-JL40BSS**

Item #	Description	Qty
516X1FTB	5/16 X 1 FINE THREAD BOLT	4
516SAEW	5/16 SAE WASHER	8
516FTN	5/16 FINE THREAD N/I LOCK NUT	4
38X412BHB	3/8 X 4-1/2 BUTTON HEAD BOLT	2
38SAEW	3/8 SAE WASHER	2
38CTN	3/8-16 COARSE N/I LOCK NUT	2

Part # HB-JLBLE4

Item #	Description	Qty
JL4BE-S	BRAKE LINE BRACKET, FRONT	4
14X1FTB	1/4 X 1 FINE THREAD BOLT \ G8	4
14SAEW	1/4 SAE WASHER	8
14FTN	1/4-28 FINE N/I LOCK NUT	4

Hardware Bag Breakdown:

Part # HB-JLFTBB

Item #	Description	Qty
JLFTBB	ROD END BUSHING / 0.563 ID	2

Part # HB-JLRTBU

Item #	Description	Qty
12X5FTB	1/2 X 5 FINE THREAD BOLT \ G8	1
12SAEW	1/2 SAE WASHER	2
12FTN	1/2-20 FINE N/I LOCK NUT	1
916X114FTB	9/16 X 1-1/4 FINE THREAD BOLT	2
916SAEW	9/16 SAE WASHER	4
916FTN	9/16-18 FINE N/I LOCK NUT	2

Part # HB-JLUEB

Item #	Description	Qty
JLUEB-B	E-BRAKE BRKT, REAR UPPER	1
12X20MMB-1.5	12 X 20-1.5 METRIC BOLT \ 10.9	1
12SAEW	1/2 SAE WASHER	1
14X1FTB	1/4 X 1 FINE THREAD BOLT	1
14FTN	1/4-28 FINE N/I LOCK NUT	1
14SAEW	1/4 SAE WASHER	2

Hardware Bag Breakdown:

Part # HB-SBENB03

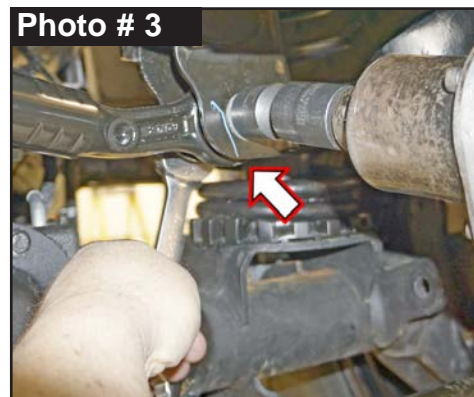
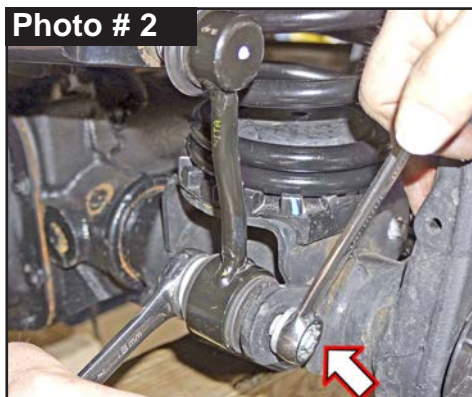
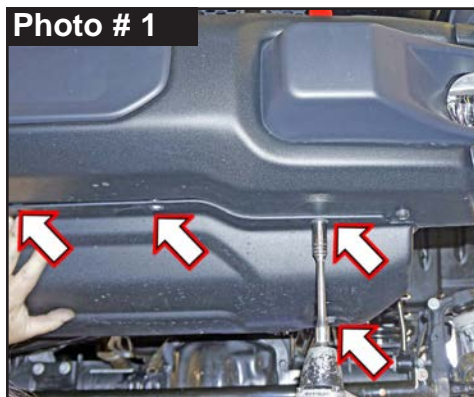
Item #	Description	Qty
141509	ES25 SLEEVE, 1.50 LONG	4
12X70MMB	12 X 70 METRIC BOLT \ 10.9	2
716USSW	7/16 USS FLAT WASHER	4
12MMN	12MM NYLON INSERT LOCK NUT	2

Part # HB-SBENB04

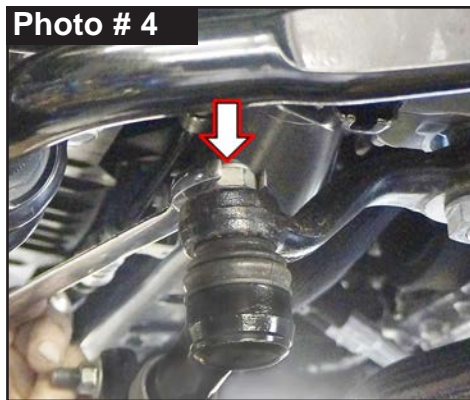
Item #	Description	Qty
141509	ES25 SLEEVE, 1.50 LONG	4
12X65BHB	12 X 65 BUTTON HEAD BOLT	2
716USSW	7/16 USS FLAT WASHER	4
12MMN	12MM NYLON INSERT LOCK NUT	2

Front Installation: **Note:** Save all factory components and hardware for reuse, unless noted.

1. With vehicle on flat level ground, set emergency brake & chock rear tires \ wheels.
2. Raise front of vehicle, support frame rails using jack stands at indicated lift points in OEM service manual.
3. Remove the front tires \ wheels using a 22mm socket.
4. Remove OEM front skid plate using a 13mm socket \ wrench. (See Photo # 1)
5. Remove OEM front sway bar end links using a 6mm hex key socket \ wrench & 18mm socket \ wrench. (See Photo # 2)
6. Disconnect OEM front track bar from frame using a 21mm socket \ wrench. (See Photo # 3)



7. Disconnect OEM drag link from OEM pitman arm using a 21mm socket \ wrench. (See Photo # 4)

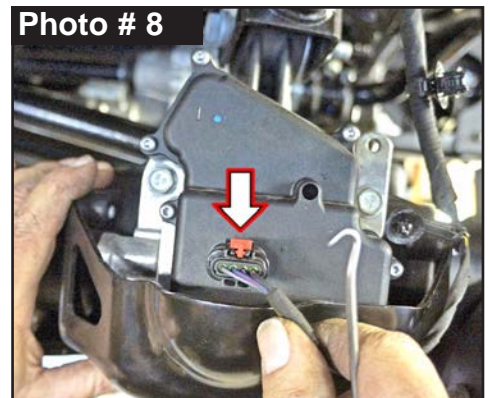
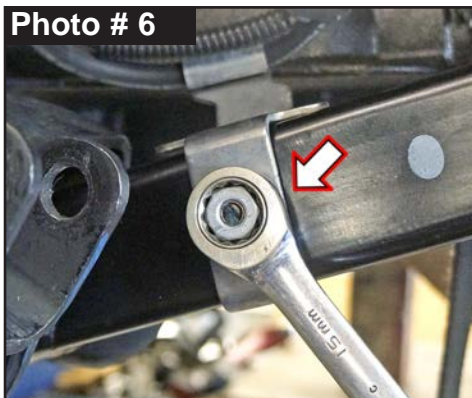


8. **Kit With Shock Extension Brackets:** Disconnect OEM front shock from lower axle mount only using a 18mm socket \ wrench. (See Photo # 5)



Kit With ADX 2.0 Remote Reservoir: Disconnect OEM front shock from upper shock tower mount & lower axle mount using a 18mm socket \ wrench.

9. Disconnect OEM front brake line brackets from OEM front lower control arms using a 15mm socket \ wrench. (See Photo # 6)
10. Mark the location of OEM front driveshaft \ flange at axle & disconnect using a 15mm socket \ wrench. (See Photo # 7)
11. Disconnect wiring harness from passenger side OEM front upper control arm using pliers.
12. Disconnect wiring harness from OEM 4WD actuator. (See Photo # 8)

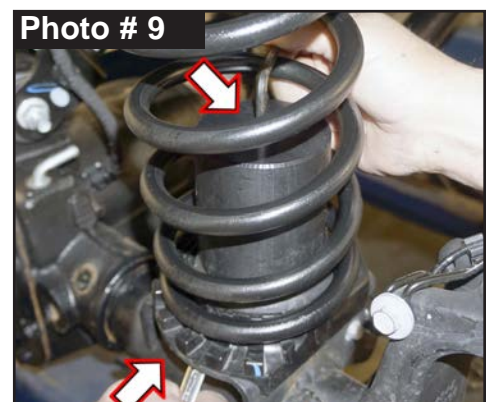


13. Disconnect OEM vent hose from front differential using pliers.
14. While checking for appropriate slack in ABS lines, brake lines, differential vent hose & etc. Lower front differential & remove OEM front coil springs.

15. Place Skyjacker # ABSS2535 Front Bumpstop Spacer inside Skyjacker # JL34HDFS-DR Front Coil Spring. Install front coil spring with bumpstop inside. Insert coil spring into upper tower first. Be sure that the coil is indexed to seat properly, then raise the axle enough to hold the coil springs in place.

Tech Note: If the front axle cannot be lowered enough to allow the coil spring to be installed, carefully rotate the pinion up to provide more clearance for the coil installation.

Insert the supplied 3/8" x 4-1/2" Button Head Bolt into bumpstop. Align bolt into hole of OEM lower coil spring mount pad. Reach under the spring mount pad & above the axle tube to install supplied 3/8" SAE Washer & 3/8" Nylon Insert Lock Nut onto bolt. Tighten



bumpstop into place using a 7/32" hex key socket \ wrench & 9/16" socket \ wrench. (See Photo # 9) Torque 25 ft.-lbs. **Tech Note:** On Passenger Side, it may be necessary to remove the ABS bracket to install the bumpstop lock nut. At rear of the axle above the shock mount, remove ABS mounting bracket using a 10mm socket \ wrench. Once bumpstop spacer is tight, reinstall ABS line mounting bracket onto axle.

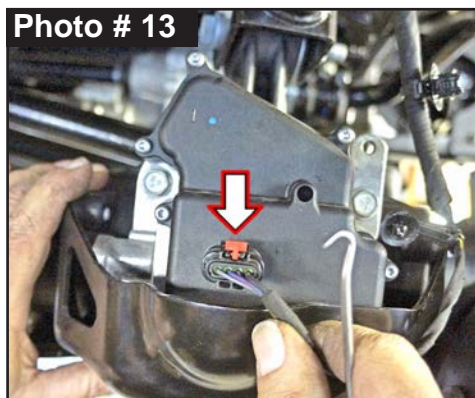
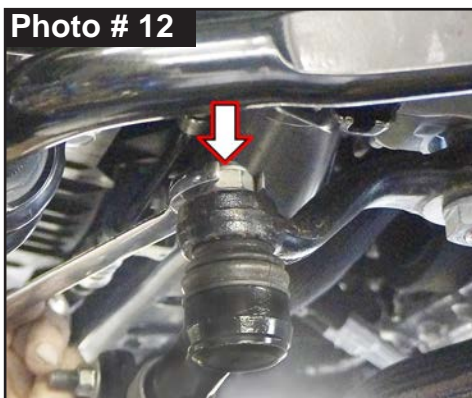
16. Raise front axle in order to load Skyjacker front coil springs.

Note: There has been occasional reports of Passenger Side coil spring having an inward bow after installation on taller lifts. If so, OEM upper coil spring isolator can be rotated 180 degrees.

Mark OEM position of the Passenger Side OEM upper coil spring isolator. Remove the two alignment pins on top of passenger side OEM upper coil spring isolator using diagonal cutting pliers or similar tool. Rotate passenger side OEM upper coil spring isolator so thicker portion is on the inside toward the frame. (See Photo # 10)



17. Connect OEM driveshaft with OEM hardware using a 15mm socket \ wrench. (See Photo # 11)
18. Connect OEM drag link to OEM pitman arm with OEM hardware using a 21mm socket \ wrench. (See Photo # 12) Torque 75 ft.-lbs.
19. Connect OEM vent hose to front differential using pliers.
20. Connect wiring harness to OEM 4WD actuator. (See Photo # 13)



21. Connect wiring harness to passenger side OEM front upper control arm.
22. Install Skyjacker # JL4BE-S Front Brake Line Bracket to OEM front lower control arm with OEM hardware using a 15mm socket \ wrench. (See Photo # 14)

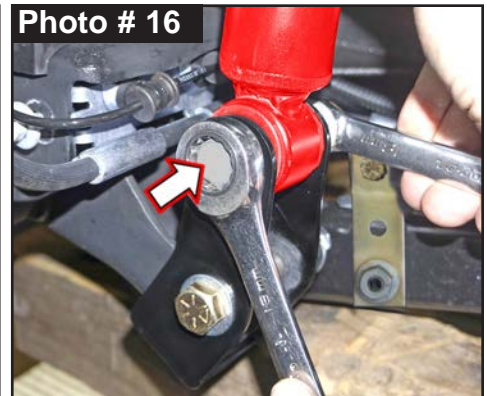
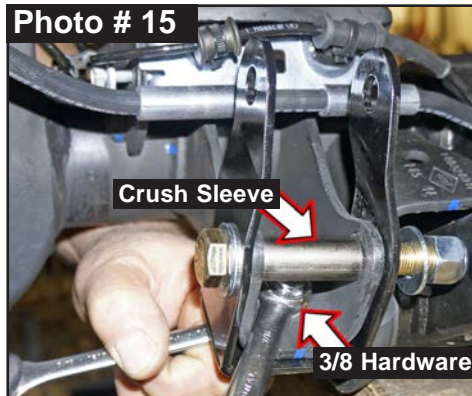
Connect OEM front brake line bracket to Skyjacker bracket using supplied 1/4" x 1" Fine Thread Bolt with 1/4" SAE Washer outside & 1/4" SAE Washer with 1/4" Nylon Insert Lock Nut on inside with a 7/16" socket \ wrench.



NOTE: Kit With Shock Extension Brackets: Proceed to Step 23.
Kit With ADX 2.0 Remote Reservoir: Proceed to Step 25.

23. Connect Skyjacker # JL35SEF-S Front Lower Shock Extension Bracket to OEM front lower shock mount with the upper mounting holes offset towards the front of the vehicle. Install with supplied 3/8" x 1" Fine Thread Bolt with 3/8" SAE Washers bottom & 3/8" SAE Washer with 3/8" Nylon Insert Lock Nut top using a 9/16" socket \ wrench. (See Photo # 15)

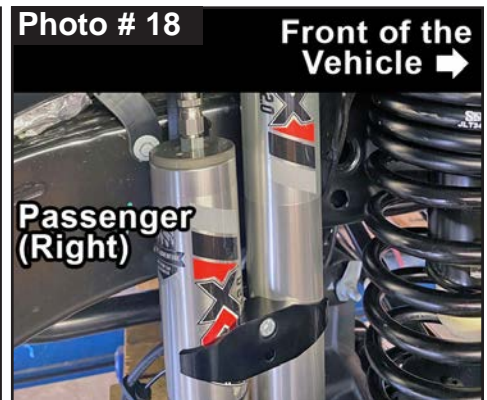
Install 1/2" x 3-1/2" Fine Thread Bolt with 1/2" SAE Washer outside, 1.62 Long Crush Sleeve in between with 1/2" SAE Washer with 1/2" Nylon Insert Lock Nut on inside using a 3/4" socket \ wrench. (See Photo # 15)



24. Connect OEM front shocks to Skyjacker front lower shock extension brackets with OEM hardware using a 21mm socket \ wrench. (See Photo # 16)

25. **Tech Note:** ADX Front Shock # A2387 Remote Reservoir are to be mounted with cylinder body up & remote reservoir toward rear for proper clearance (opposite side of coil spring mount). (See Photo # 17 & # 18)

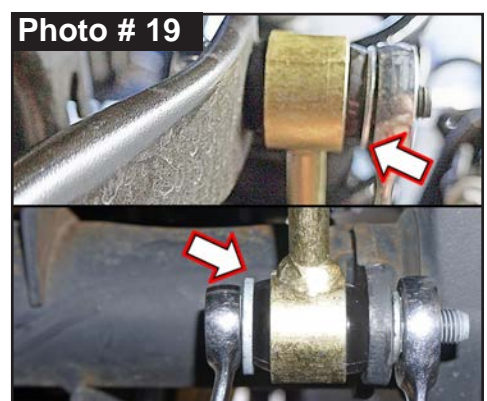
Loosely assemble two (2) supplied reservoir clamps with two (2) supplied hex head bolts using a 5/32" Hex Key socket. Position clamp into place around shock & reservoir cylinder. Secure, but Do Not Completely Tighten at this time.



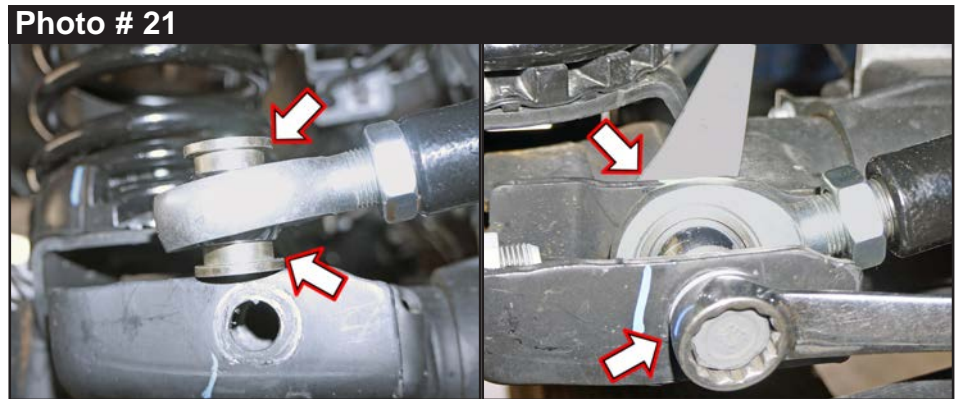
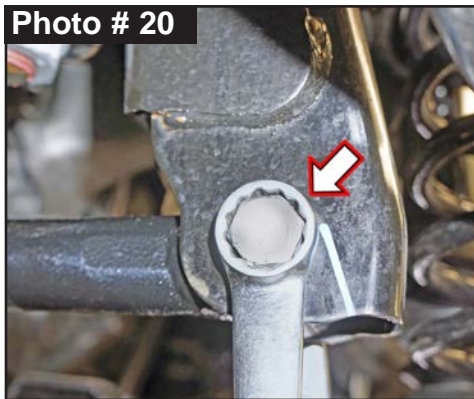
Install Skyjacker # A2387 ADX Front Shock with OEM hardware at upper shock tower mount using a 18mm socket \ wrench. **Note:** Upper shock mount has a OEM fixed nut welded onto the frame. Be careful not to dislodge nor over tighten this nut.

Connect Skyjacker shock at lower axle mount with OEM hardware using a 18mm socket \ wrench. Secure, but Do Not Completely Tighten at this time. These will be tightened once vehicle is on ground with full vehicle weight on tires \ wheels.

26. Coat with a water resistant grease & press # ES25 1.50 Long Steel Sleeves into upper & lower mounts of # SBE4048-L Front Sway Bar End Link. Install upper end link mount with supplied 12mm x 70mm Bolt with a 7/16" USS Washer through sway bar with a 7/16" USS Washer & 12mm Nylon Insert Lock Nut using a 19mm socket \ wrench. (See Photo # 19) Attach lower end link with OEM hardware using a 18mm socket \ wrench. **Note:** On Driver Side, install OEM lower bolt with large washer to outer bushing side of sway bar end link. Secure, but Do Not Completely Tighten at this time.



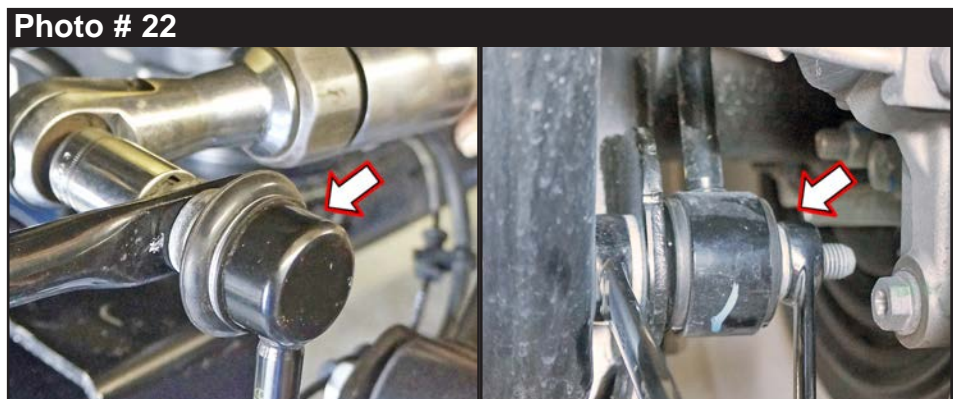
27. Install OEM front skid plate with OEM hardware using a 13mm socket \ wrench. (See Photo # 1)
28. Install front tires \ wheels using a 22mm socket Lower vehicle to ground. Torque 130 ft-lbs.
29. Make sure that tires \ wheels are pointed straight ahead. Install fixed end of Skyjacker # JLFTBA18-B Front Adjustable Track Bar to frame with OEM hardware using a 21mm socket \ wrench. (See Photo # 20) **Note:** Do not tighten at this time.
30. Install supplied # JLFTBB Rod End Bushings onto rod end of Skyjacker track bar. Install rod end assembly into front axle mount with OEM hardware using a 21mm socket \ wrench. (See Photo # 21) **Note:** Do not tighten at this time.
Tech Note: It may be necessary to turn steering wheel to align track rod end with mount.



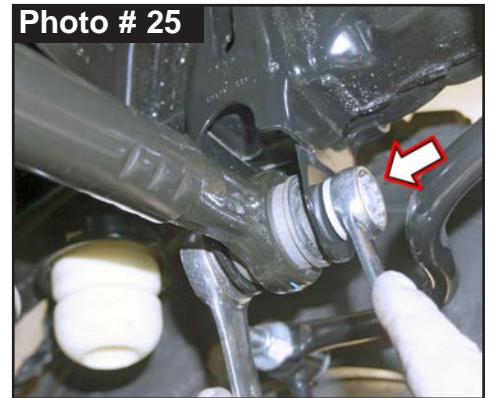
31. Check front of vehicle to make sure body is centered over front tires \ wheels. Using a measuring tape, measure from inside of tire to frame on driver side, then measure passenger side.
Compare two measurements; the aim is to make both sides equal. **Note:** If driver side measurement is greater than passenger side, track bar needs to be lengthened. If passenger side measurement is greater than driver side, track bar needs to be shortened.
Remove adjustable rod end of track bar, loosen jam nut using a 1-1/8" wrench & turn rod end to adjust in or out. Once body is properly aligned over front tires \ wheels, tighten OEM hardware using a 21mm socket \ wrench.
Fully tighten all OEM hardware at upper frame mount & axle mount. Fully tighten jam nut of Skyjacker adjustable front track bar using a 1-1/8" wrench.
Tighten supplied jam nut of Skyjacker Adjustable Front Track Bar using a 1-1/8" wrench.

Rear Installation: Note: Save all factory components and hardware for reuse, unless noted.

1. Chock front tires \ wheels. Raise rear of vehicle & support frame rails using jack stands at indicated lift points in OEM service manual.
2. Remove rear tires \ wheels using a 22mm socket.
3. Remove OEM rear sway bar end link using a 6mm hex key socket \ wrench & 18mm socket \ wrench. (See Photo # 22)

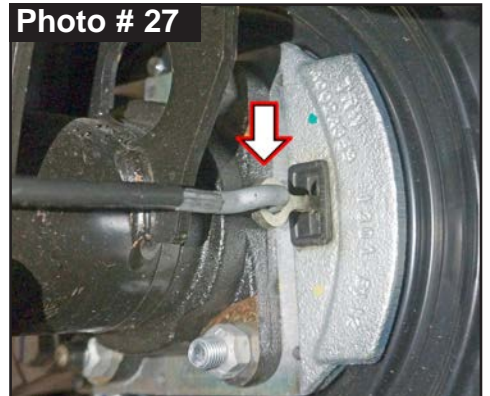
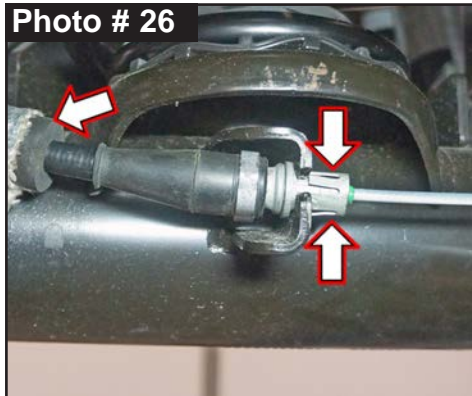


4. Disconnect OEM rear brake line brackets from frame using a 10mm socket \ wrench. (See Photo #23) Disconnect OEM rear brake line brackets from rear axle at upper control arm mount using a 13mm socket \ wrench. (See Photo #24)
5. Disconnect OEM rear track bar from passenger side upper frame mount using a 21mm socket \ wrench. (See Photo # 25)



6. Locate two (2) OEM emergency brake cables on the front of the rear axle. They run down from the body to the center of the axle out to each driver & passenger brake housing.

Hold tension on inward cable & pinch ears of the aluminum fitting to release it from axle mount using pliers. (See Photo # 26) Remove e-brake cable. Disconnect cable hook-end from the ring on the brake housing. (See Photo # 27) Repeat process on opposite side of vehicle.



7. **Kit With Shock Extension Brackets:** Disconnect OEM rear shock from lower axle mount only using a 18mm socket \ wrench. (See Photo # 28)

Kit With ADX 2.0 Remote Reservoir: Disconnect OEM rear shock from upper shock tower

mount & lower axle mount using a 18mm socket \ wrench. **Note:** OEM upper shock mount has nut attached to shock mount. **Tech Note:** In order to gain access to OEM rear upper shock mounting bolts, remove three (3) OEM bolts rear bumper inner fender liner using a 8mm socket \ wrench. (See Photo # 29) Retain hardware.

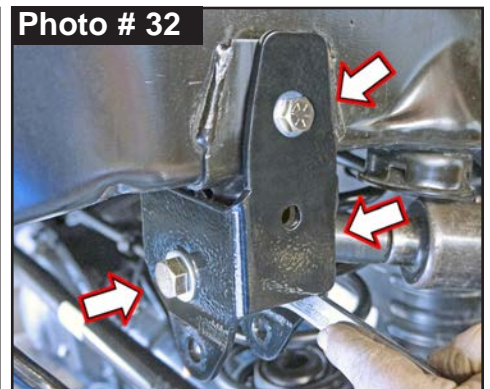
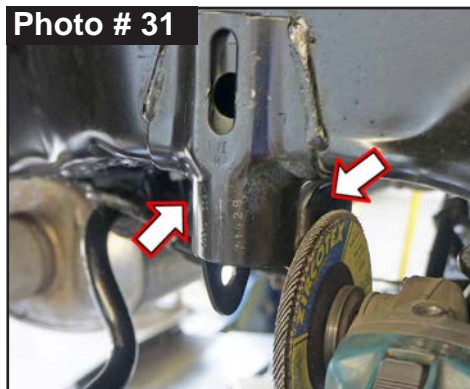
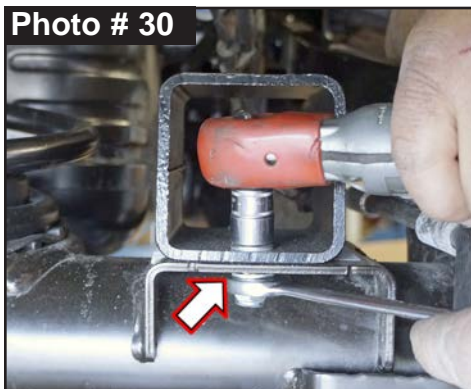


8. While checking for appropriate slack in ABS lines, brake lines, differential vent hose & etc, lower rear axle & remove OEM rear coil springs.

9. Install Skyjacker # JK40RBS-S Rear Bumpstop Spacer to OEM rear bumpstop pads using supplied 5/16" x 1" Bolt with a 5/16" SAE Washer on top & a 5/16" SAE Washer with 5/16" Nylon Insert Lock Nut on bottom using 1/2" wrenches. (See Photo # 30)
10. Check fit Skyjacker # JLRTBU-B Rear Track Bar Upper Bracket over OEM rear upper track bar mount on frame. The double hole side of Skyjacker track bar bracket towards outside of vehicle. (See Photo # 32)

Note: It may be necessary to slightly grind the welds of OEM frame mount for new track bar bracket to be installed easily. (See Photo # 31)

File smooth any burrs or sharp edges on OEM mount then paint \ undercoat all exposed metal.

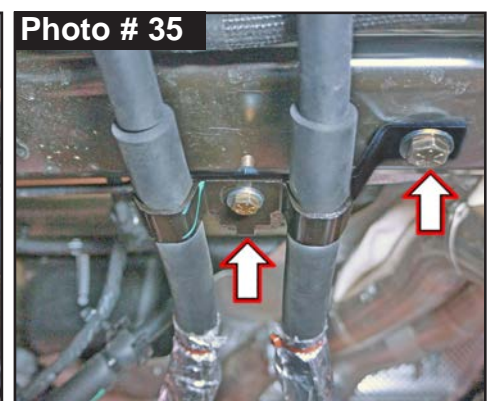


11. Install Skyjacker # JLRTBU-B Rear Track Bar Upper Bracket over OEM rear upper track bar bracket on frame. First, insert a supplied 1/2" x 5" Fine Thread Bolt with 1/2" SAE Washer through the bracket's upper outside frame mounting hole. Attach with 1/2" SAE Washer & 1/2" Nylon Insert Lock Nut on inside using a 3/4" socket \ wrench. (See Photo # 32) Torque 90 ft-lbs. Next, insert a supplied 9/16" x 1-1/4" Fine Thread Bolt with 9/16" SAE Washer through bracket \ OEM track bar mounting holes. Attach with 9/16" SAE Washer & 9/16" Nylon Insert Lock Nut on inside using a 13/16" & 7/8" socket \ wrench. (See Photo # 32) Torque 130 ft-lbs.

12. Locate the two (2) OEM emergency brake cables attached to the bottom of the body. Remove OEM e-brake bracket that holds cables using a 13mm socket \ wrench. (See Photo # 33)

Move the two (2) OEM emergency brake cables from behind OEM crossmember to in front of crossmember as shown. (See Photo # 34)

Attach Skyjacker # JLUEB-B Rear Upper E-Brake Bracket into OEM threaded bolt hole of crossmember (off center slightly toward driver side). Install with supplied 12mm x 20mm Bolt with a 1/2" SAE Washer through Skyjacker bracket into crossmember using a 19mm socket \ wrench. (See Photo # 35)



Attach OEM e-brake bracket & e-brake cables to Skyjacker bracket.

Note: OEM e-brake bracket attaches with bent alignment tab rearward.

First, insert a supplied 1/4" x 1" Fine Thread Bolt with 1/4" SAE Washer through OEM e-brake bracket. Align OEM e-brake bracket with both e-brake cables & Skyjacker bracket. Attach with 1/4" SAE Washer & 1/4" Nylon Insert Lock Nut on top using a 7/16" socket \ wrench. (See Photo # 35)

Run each e-brake cable down & out to appropriate driver \ passenger brake housing. Connect cable hook-end onto the ring on the brake housing.

(See Photo # 36)

Hold tension on inward e-brake cable. Using pliers,

pinch ears of the aluminum fitting to attach cable to OEM axle mount. (See Photo # 37)

Repeat process on opposite side of vehicle.

Photo # 36

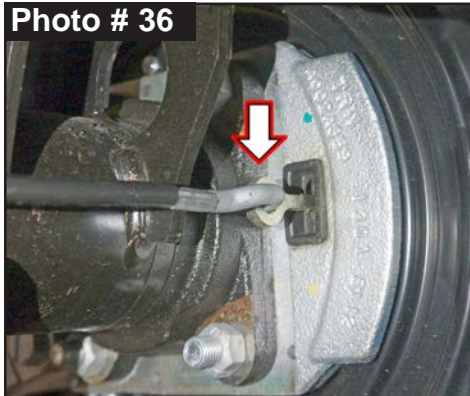
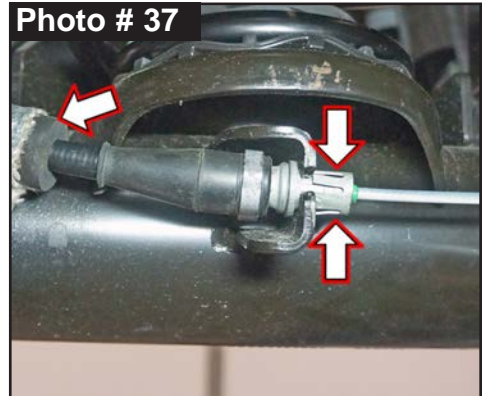


Photo # 37



13. **Note:** Be sure that tab of each OEM rear upper coil spring isolator are aligned with hole of OEM rear upper coil spring mount. (See Photo # 38)

Install Skyjacker rear coil springs. (See Photo # 39)

Tech Note: Skyjacker rear coil springs are two different lengths \ heights. The taller rear coil spring is to be installed on OEM fuel tank side of the vehicle. The shorter rear coil spring is to be installed on opposite side of vehicle.

Photo # 38



Photo # 39



Raise the rear differential in order to load the Skyjacker rear coil springs.

NOTE: Kit With Shock Extension Brackets: Proceed to Step 14.

Kit With ADX 2.0 Remote Reservoir: Proceed to Step 16.

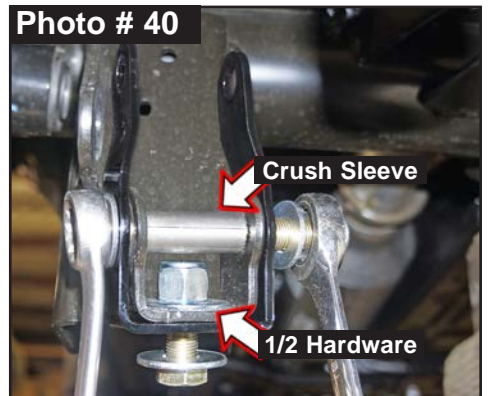
14. Connect Skyjacker # JL25SER-S Rear Lower Shock Extension Brackets to OEM rear lower shock mount with upper mounting holes offset towards front of vehicle.

Install with supplied 1/2" x 1-1/4" Fine Thread Bolt with 1/2" USS Washers bottom & 1/2" USS Washer with 1/2" Nylon Insert Lock Nut top using a 3/4" socket \ wrench.

(See Photo # 40)

Install 1/2" x 3-1/2" Fine Thread Bolt with 1/2" SAE Washer outside, 1.62 Long Crush Sleeve in between with 1/2" SAE Washer & 1/2" Nylon Insert Lock Nut on inside using 3/4" socket \ wrench. (See Photo # 40)

Photo # 40



15. Connect OEM rear shocks to Skyjacker rear lower shock extension brackets with OEM hardware using a 18mm socket \ wrench. (See Photo # 41)



16. **Tech Note:** ADX Rear Shock # A2389 Remote Reservoir are to be mounted with cylinder body up & remote reservoir toward rear for proper clearance. (See Photo # 17 & # 18)

Loosely assemble two (2) supplied reservoir clamps with two (2) supplied hex head bolts using a 5/32" Hex Key socket. Position clamp into place around shock & reservoir cylinder. Secure, but Do Not Completely Tighten at this time.

Install Skyjacker ADX # A2389 Rear Shock with OEM hardware using a 18mm socket \ wrench. Secure, but Do Not Completely Tighten at this time.

Attach OEM rear bumper inner fender liner with OEM bolts using a 8mm socket \ wrench. (See Photo # 29)

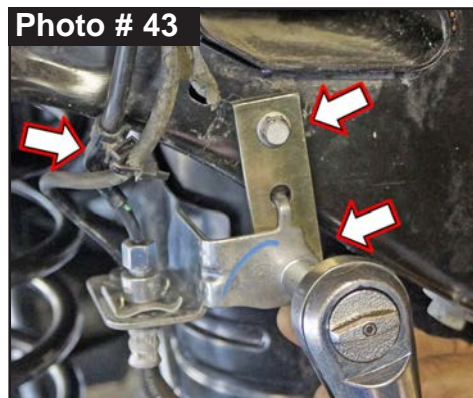
17. Connect OEM rear track bar to Skyjacker Rear Upper Track Bar Bracket using OEM hardware & a 21mm socket \ wrench. (See Photo # 42) **Note:** Install OEM bolt from front-to-rear of vehicle. **Tech Note:** It may be necessary to raise \ lower axle to take pressure off track bar bolt.

18. Install Skyjacker # JL4BE-S Rear Brake Line Brackets to frame with OEM hardware using a 10mm socket \ wrench. (See Photo # 43)

Rotate & connect OEM rear brake line bracket to Skyjacker bracket using supplied 1/4" x 1" Fine Thread Bolt with 1/4" SAE Washer outside & 1/4" SAE Washer with 1/4" Nylon Insert Lock Nut on inside with a 7/16" socket \ wrench.

Slightly bend \ straighten OEM rear hard brake line. **Note:** Be very careful not to damage OEM rear hard brake lines.

19. Connect OEM rear brake line brackets to rear differential with OEM hardware using a 13mm socket / wrench. (See Photo # 44)

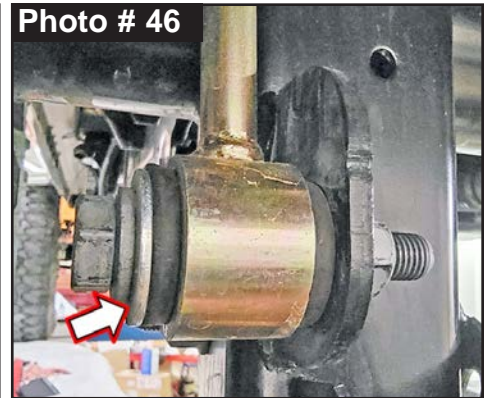
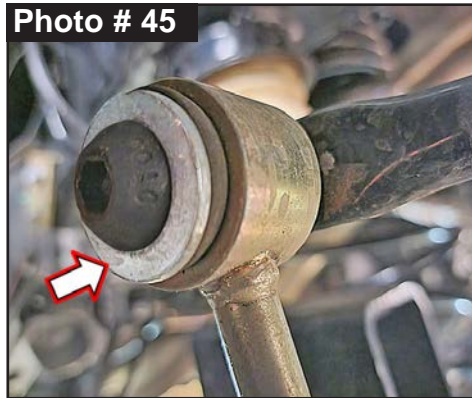


20. Coat with a water resistant grease & press # ES25 1.50 Long Steel Sleeves into upper & lower mounts of Skyjacker # SBE4068-L Rear Sway Bar End Links.

Install upper end link mount with supplied 12mm x 65mm Button Head Bolt with a 7/16" USS Washer from outside of vehicle inward through sway bar with a 7/16" USS Washer & 12mm Nylon Insert Lock Nut on inside using a 5/16" hex key socket & a 18mm socket \ wrench. (See Photo # 45)

Attach lower end link with OEM hardware with large washer to bushing side of end link using a 18mm socket \ wrench. (See Photo # 46) Secure, but Do Not Completely at this time.

21. Install rear tires \ wheels using a 22mm socket. Lower vehicle to ground. Torque 130 ft-lbs.



Final Clearance Check & Torque Steps:

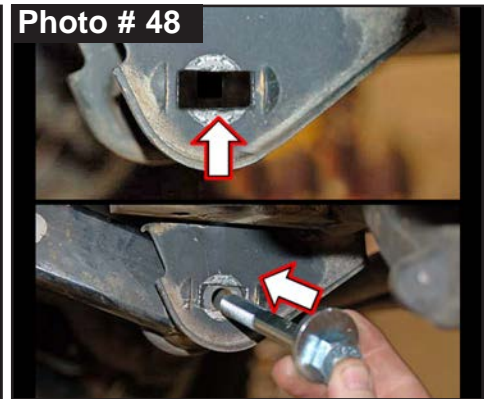
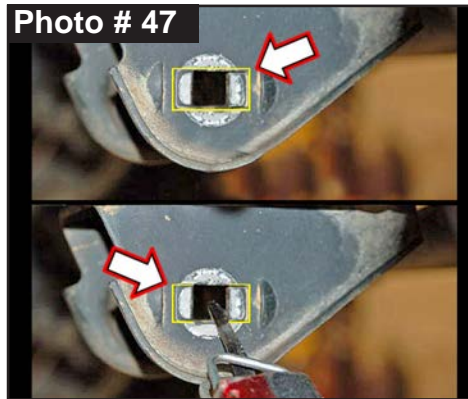
1. Start vehicle. Make sure there are no dash lights pertaining to suspension.
2. Jounce vehicle a couple of times. This will help suspension settle to new ride height. Cycle steering lock-to-lock & check all components for proper operation & clearances. Pay special attention to clearance between tires \ wheels and ADX Shocks & Reservoirs, control arms, brake hoses, ABS wiring, etc.
3. Front Tighten & Torque Sequence.
Skyjacker track bar at frame using a 21mm wrench. Torque 52 ft-lbs. + 115°
Skyjacker track bar at axle using a 21mm wrench. Torque 52 ft-lbs. + 115°
Front shock extension bracket at lower bolt mount using a 9/16" socket \ wrench. Torque 35 ft-lbs.
Front shock extension bracket at crush sleeve using a 3/4" socket \ wrench. Torque 65 ft-lbs.
Front shock extension bracket at lower shock mount using a 18mm wrench. Torque 74 ft-lbs.
Front shock absorber upper mount using a 18mm wrench. Torque 81 ft-lbs.
Front shock absorber lower mount using a 18mm wrench. Torque 74 ft-lbs.
ADX Reservoir clamp. Double check position & clearance. Tighten with 5/32" Hex Key socket.
Skyjacker sway bar end link upper bolt using a 19mm socket \ wrench. Torque 59 ft-lbs.
Skyjacker sway bar end link lower bolt using a 18mm socket \ wrench. Torque 59 ft-lbs.
4. Rear Tighten & Torque Sequence.
Skyjacker track bar bracket bolts. 1/2" Bolts Torque 90 ft-lbs. 9/16" Bolt Torque 130 ft-lbs.
Track bar at Skyjacker bracket. Torque 130 ft-lbs.
Rear shock extension bracket at lower bolt mount using a 3/4" socket \ wrench. Torque 65 ft-lbs.
Rear shock extension bracket at crush sleeve using a 3/4" socket \ wrench. Torque 65 ft-lbs.
Rear shock extension bracket at lower shock mount using a 18mm wrench. Torque 74 ft-lbs.
Rear shock absorber upper mount using a 18mm socket \ wrench. Torque 81 ft-lbs.
Rear shock absorber lower mount using a 18mm socket \ wrench. Torque 74 ft-lbs.
ADX Reservoir clamp. Double check position & clearance. Tighten with 5/32" Hex Key socket.
Skyjacker sway bar end link mount using a 5/16" hex key socket & a 18mm socket \ wrench. Torque 59 ft-lbs.
Skyjacker sway bar end link mount using a 18mm socket \ wrench. Torque 59 ft-lbs.

Front Lower & Rear Upper Cam Bolt Installation:

1. Use Skyjacker # CAM800 Eccentric Cam Bolts for Front Lower Control Arms for OEM axle mount brackets. Perform Steps on One Side at a Time.

Disconnect front OEM lower control arm from OEM front axle mount using a 21mm socket \ wrench & a 24mm socket \ wrench.

2. The OEM control arm axle mount brackets have 'knockout' alignment inserts. Use inserts as a guide and cut a slotted rectangular hole. Using a Sawzall, Dremel or other small cutting device, cut out a notch on each side of OEM control arm bracket mounts. (See Photo # 47 & # 48)



3. Connect OEM front lower control arm to modified OEM front axle mount using Skyjacker eccentric cam bolt, eccentric washer, nut, a 21mm socket \ wrench & a 24mm socket \ wrench. (See Photo # 49)

Note: These new eccentric cam bolts can be rotated forward or backward for proper driveline phasing, caster adjustment & to adjust axle pinion angle to eliminate driveline vibrations.

4. Use Skyjacker # CAM700 Eccentric Cam Bolts for Rear Upper Control Arms for OEM axle mount brackets. Perform Steps on One Side at a Time.

Disconnect rear OEM upper control arm from OEM rear axle mount using a 21mm socket \ wrench.

Using same process as front mount brackets, repeat notching of slotted holes in steps on rear upper OEM axle mount brackets.

Connect OEM rear upper control arm to modified OEM rear axle mount using Skyjacker eccentric cam bolt, eccentric washer, nut & a 21mm socket \ wrench. (See Photo # 50)

5. With vehicle on ground & weight of vehicle on tires \ wheels, tighten front & rear eccentric cam bolts using a 21mm socket \ wrench & 24mm socket \ wrench.



Final Notes:

- After installation is complete, double check that all nuts & bolts are tight. Refer to the following chart for proper torque specifications. (**Note:** Do not re-tighten nuts & bolts where thread lock compound was used.)
- With vehicle placed on ground, cycle steering lock to lock & inspect steering, suspension, brake lines, front & rear drivelines, fuel lines & wiring harnesses for proper operation, tightness & adequate clearance.
- Have headlights readjusted to proper settings.
- Have a qualified alignment center align vehicle to OEM specifications.
- After first 100 miles, check all hardware for proper torque & periodically thereafter.

TORQUE SPECIFICATIONS					
INCH SYSTEM			METRIC SYSTEM		
Bolt Size	Grade 5	Grade 8	Bolt Size	Class 8.8	Class 10.9
5/16	180 in-lbs	240 in-lbs	6MM	60 in-lbs	108 in-lbs
3/8	30 ft-lbs	35 ft-lbs	8MM	216 in-lbs	23 ft-lbs
7/16	45 ft-lbs	60 ft-lbs	10MM	32 ft-lbs	45 ft-lbs
1/2	65 ft-lbs	90 ft-lbs	12MM	55 ft-lbs	75 ft-lbs
9/16	95 ft-lbs	130 ft-lbs	14MM	85 ft-lbs	120 ft-lbs
5/8	135 ft-lbs	175 ft-lbs	16MM	130 ft-lbs	165 ft-lbs
3/4	185 ft-lbs	280 ft-lbs	18MM	170 ft-lbs	240 ft-lbs

**The Above Specifications Are Not to Be Used
When the Bolt Is Being Installed With a Bushing.**

Seat Belts Save Lives, Please Wear Your Seat Belt.

Optional Front Adjustable Track Bar Available:

JLRTBA18 Rear Adjustable Track Bar | 2"- 6" Lift

Optional Front Track Bar Brace Available:

JLFBRC18 Front Track Bar Brace

Optional HD OEM Replacement Steering Stabilizers Available:

7008 HD OEM Replacement Steering Stabilizer | White Steering Damper

8008 HD OEM Replacement Steering Stabilizer | Black Steering Damper

9008 HD OEM Replacement Steering Stabilizer | Silver Steering Damper

Optional Dual Steering Stabilizer Kits Available:

7208 Dual Steering Stabilizer Kit | White Steering Dampers

8208 Dual Steering Stabilizer Kit | Black Steering Dampers

9208 Dual Steering Stabilizer Kit | Silver Steering Dampers

Optional HD Front / Rear Upper & Lower Control Arms Available:

JL24LL HD Front & Rear Lower Control Arms Set | 1"- 4" Lift

JL24LLX Single Flex Front & Rear Lower Control Arms Set | 1"- 6" Lift

JLL24F-SX Single Flex Front Lower Control Arms Pair | 1"- 6" Lift

JLL24R-SX Single Flex Rear Lower Control Arms Pair | 1"- 6" Lift

JLULF26-SX Single Flex Front Upper Control Arms Pair | 1"- 6" Lift

JLULR26-SX Single Flex Rear Upper Control Arms Pair | 1"- 6" Lift