



www.skyjacker.com

2016-2022 Toyota Tacoma
4WD/2WD
3" Performance Strut Kit
Upper Control Arm (UCA) Kit
Installation Instructions

Required Tools List:

- Safety Glasses
SAE Sockets \ Wrenches (7/16", 1/2", 3/4" & 7/8")
Metric Hex Key & Metric Sockets \ Wrenches (7mm Hex Key, 6mm, 8mm, 10mm, 12mm, 14mm, 17mm, 19mm, 21mm, 22mm & a Socket Extension)
Coil Spring Compressor
Grease Gun for Skyjacker UCA Ball Joint
Plastic Fastener Removal Tool
Reciprocating Saw or Suitable Cutting Tool
Pliers
Punch
Torque Wrench
Paint Marker
Floor Jack
Wheel Chocks
Paint \ Undercoating
Ball Peen Hammer
Crescent Wrench
Measuring Tape
Jack Stands



Before beginning installation, read these instructions & enclosed driver's WARNING NOTICE thoroughly & completely. Also affix WARNING decal in passenger compartment in clear view of all occupants. Please refer to Parts List to insure that all parts & hardware are received prior to disassembly of vehicle. If any parts are found to be missing, contact SKYJACKER® Customer Service at 318-388-0816 to obtain needed items. If you have any questions or reservations about installing this product, contact SKYJACKER® Technical Assistance at 318-388-0816.

Make sure you park vehicle on a level concrete or asphalt surface. Many times a vehicle is not level (side-to-side) from factory, but is usually not noticed until a lift kit has been installed which makes difference more visible. Using a measuring tape, measure front & rear (both sides) from ground up to center of fender opening above axle. Record this information below for future reference.

Driver Side Front: _____ / _____ BEFORE / AFTER
Passenger Side Front: _____ / _____ BEFORE / AFTER
Driver Side Rear: _____ / _____ BEFORE / AFTER
Passenger Side Rear: _____ / _____ BEFORE / AFTER

Important Notes:

- If Larger Tires (10% More Than the OEM Diameter) Are Installed, Speedometer Recalibration Will Be Necessary. Contact Your Local Toyota Dealer or an Authorized Skyjacker® Dealer for Details.
After Installation, a Qualified Alignment Facility Is Required to Align Vehicle to OEM Specifications.
Does NOT Fit Toyota Tacoma Models with 5-Lug Wheels.
Does NOT Fit XSP-X Models.
Does NOT Fit T/X Baja Models.
Does NOT Fit TRD Pro Models.

Component Box Breakdown:**Part # TC536STBB (WITH BLACK MAX)**

Item #	Description	Qty
513STS	ADJUSTABLE FRONT STRUT	2
RB20	REAR LIFT BLOCKS, 2 IN.	2
916X212X834U	9/16 X 2-1/2 X 8-3/4 U-BOLT	4
TFDD2	DIFFERENTIAL DROP KIT	1
HB-TC536	HDWR BAG: E-BRAKE HDWR	1
B8545	BLACK MAX SHOCK W/BOOT	2
I-TC536STB	INST SHEET: TC536STB	1

Part # TC536STBH (WITH HYDRO)

Item #	Description	Qty
513STS	ADJUSTABLE FRONT STRUT	2
RB20	REAR LIFT BLOCKS, 2 IN.	2
916X212X834U	9/16 X 2-1/2 X 8-3/4 U-BOLT	4
TFDD2	DIFFERENTIAL DROP KIT	1
HB-TC536	HDWR BAG: E-BRAKE HDWR	1
H7045	HYDRO SHOCK W/RED BOOT	2
I-TC536STB	INST SHEET: TC536STB	1

Part # TC536STBM (WITH M95)

Item #	Description	Qty
513STS	ADJUSTABLE FRONT STRUT	2
RB20	REAR LIFT BLOCKS, 2 IN.	2
916X212X834U	9/16 X 2-1/2 X 8-3/4 U-BOLT	4
TFDD2	DIFFERENTIAL DROP KIT	1
HB-TC536	HDWR BAG: E-BRAKE HDWR	1
M9545	M95 MONOTUBE SHOCK, M9545	2
I-TC536STB	INST SHEET: TC536STB	1

Part # TC536STBN (WITH NITRO)

Item #	Description	Qty
513STS	ADJUSTABLE FRONT STRUT	2
RB20	REAR LIFT BLOCKS, 2 IN.	2
916X212X834U	9/16 X 2-1/2 X 8-3/4 U-BOLT	4
TFDD2	DIFFERENTIAL DROP KIT	1
HB-TC536	HDWR BAG: E-BRAKE HDWR	1
N8045	NITRO SHOCK W/RED BOOT	2
I-TC536STB	INST SHEET: TC536STB	1

Component Box Breakdown:**Part # TC536STUB (WITH BLACK MAX)**

Item #	Description	Qty
513STS	ADJUSTABLE FRONT STRUT	2
RB20	REAR LIFT BLOCKS, 2 IN.	2
916X212X834U	9/16 X 2-1/2 X 8-3/4 U-BOLT	4
TFDD2	DIFFERENTIAL DROP KIT	1
HB-TC536	HDWR BAG: E-BRAKE HDWR	1
T53UCA-L	UPPER CONTROL ARM, DRIVER	1
T53UCA-R	UPPER CONTROL ARM, PASS.	1
HB-14ARM	HDWR BAG: 1/4 FOR UCA BRKT.	1
B8545	BLACK MAX SHOCK W/BOOT	2
I-TC536STB	INST SHEET: TC536STB	1

Part # TC536STUH (WITH HYDRO)

Item #	Description	Qty
513STS	ADJUSTABLE FRONT STRUT	2
RB20	REAR LIFT BLOCKS, 2 IN.	2
916X212X834U	9/16 X 2-1/2 X 8-3/4 U-BOLT	4
TFDD2	DIFFERENTIAL DROP KIT	1
HB-TC536	HDWR BAG: E-BRAKE HDWR	1
T53UCA-L	UPPER CONTROL ARM, DRIVER	1
T53UCA-R	UPPER CONTROL ARM, PASS.	1
HB-14ARM	HDWR BAG: 1/4 FOR UCA BRKT.	1
H7045	HYDRO SHOCK W/RED BOOT	2
I-TC536STB	INST SHEET: TC536STB	1

Part # TC536STUM (WITH M95)

Item #	Description	Qty
513STS	ADJUSTABLE FRONT STRUT	2
RB20	REAR LIFT BLOCKS, 2 IN.	2
916X212X834U	9/16 X 2-1/2 X 8-3/4 U-BOLT	4
TFDD2	DIFFERENTIAL DROP KIT	1
HB-TC536	HDWR BAG: E-BRAKE HDWR	1
T53UCA-L	UPPER CONTROL ARM, DRIVER	1
T53UCA-R	UPPER CONTROL ARM, PASS.	1
HB-14ARM	HDWR BAG: 1/4 FOR UCA BRKT.	1
M9545	M95 MONOTUBE SHOCK, M9545	2
I-TC536STB	INST SHEET: TC536STB	1

Part # TC536STUN (WITH NITRO)

Item #	Description	Qty
513STS	ADJUSTABLE FRONT STRUT	2
RB20	REAR LIFT BLOCKS, 2 IN.	2
916X212X834U	9/16 X 2-1/2 X 8-3/4 U-BOLT	4
TFDD2	DIFFERENTIAL DROP KIT	1
HB-TC536	HDWR BAG: E-BRAKE HDWR	1
T53UCA-L	UPPER CONTROL ARM, DRIVER	1
T53UCA-R	UPPER CONTROL ARM, PASS.	1
HB-14ARM	HDWR BAG: 1/4 FOR UCA BRKT.	1
N8045	NITRO SHOCK W/RED BOOT	2
I-TC536STB	INST SHEET: TC536STB	1

KIT Breakdown: (BOX + LEAF SPRINGS)**Part # TC536STUBKS (WITH BLACK MAX)**

Item #	Description	Qty
TC536STUSB	KIT COMPONENT BOX	1
TCR620S	REAR LEAF SPRINGS	2

Part # TC536STUHK (WITH HYDRO)

Item #	Description	Qty
TC536STUSH	KIT COMPONENT BOX	1
TCR620S	REAR LEAF SPRINGS	2

Part # TC536STUMKS (WITH M95)

Item #	Description	Qty
TC536STUSM	KIT COMPONENT BOX	1
TCR620S	REAR LEAF SPRINGS	2

Part # TC536STUNKS (WITH NITRO)

Item #	Description	Qty
TC536STUSN	KIT COMPONENT BOX	1
TCR620S	REAR LEAF SPRINGS	2

Hardware Bag Breakdown:**Part # TFDD2**

Item #	Description	Qty
TCLS10-B	DIFF LOWERING SPACER	2
CS0750	CRUSH SLEEVE	4
8X40MMB	8MM X 40MM METRIC BOLT	4
516USSW	5/16 USS WASHER	4
12X612CTBG5	1/2 X 6-1/2 COARSE THRD BOLT	2
12SAEW	1/2 SAE WASHER	4
12CTN	1/2 COARSE THRD N/I LOCK NUT	2
I-TFDD2	INST SHEET: TFDD2	1

Part # HB-14ARM

Item #	Description	Qty
14CTN	1/4 COARSE THRD N/I LOCK NUT	2
14SAEW	1/4 SAE WASHER	2

Part # HB-TC536

Item #	Description	Qty
RBLE10-S	E-BRAKE CABLE EXT BRKT	2
516X34CTBG5	5/16 X 3/4 COARSE THRD BOLT	2
516SAEW	5/16 SAE WASHER	4
516CTN	5/16 COARSE THRD N/I LOCK NUT	2
916FTN	9/16 FINE THREAD N/I LOCK NUT	8

Component Box Breakdown:**Part # TC536STUSB (WITH BLACK MAX)**

Item #	Description	Qty
513STS	ADJUSTABLE FRONT STRUT	2
916X212X7U	9/16 X 2-1/2 X 7 U-BOLT	4
TFDD2	DIFFERENTIAL DROP KIT	1
HB-TC536	HDWR BAG: E-BRAKE HDWR	1
T53UCA-L	UPPER CONTROL ARM, DRIVER	1
T53UCA-R	UPPER CONTROL ARM, PASS.	1
HB-14ARM	HDWR BAG: 1/4 FOR UCA BRKT.	1
B8545	BLACK MAX SHOCK W/BOOT	2
I-TC536STB	INST SHEET: TC536STB	1

Part # TC536STUSH (WITH HYDRO)

Item #	Description	Qty
513STS	ADJUSTABLE FRONT STRUT	2
916X212X7U	9/16 X 2-1/2 X 7 U-BOLT	4
TFDD2	DIFFERENTIAL DROP KIT	1
HB-TC536	HDWR BAG: E-BRAKE HDWR	1
T53UCA-L	UPPER CONTROL ARM, DRIVER	1
T53UCA-R	UPPER CONTROL ARM, PASS.	1
HB-14ARM	HDWR BAG: 1/4 FOR UCA BRKT.	1
H7045	HYDRO SHOCK W/RED BOOT	2
I-TC536STB	INST SHEET: TC536STB	1

Part # TC536STUSM (WITH M95)

Item #	Description	Qty
513STS	ADJUSTABLE FRONT STRUT	2
916X212X7U	9/16 X 2-1/2 X 7 U-BOLT	4
TFDD2	DIFFERENTIAL DROP KIT	1
HB-TC536	HDWR BAG: E-BRAKE HDWR	1
T53UCA-L	UPPER CONTROL ARM, DRIVER	1
T53UCA-R	UPPER CONTROL ARM, PASS.	1
HB-14ARM	HDWR BAG: 1/4 FOR UCA BRKT.	1
M9545	M95 MONOTUBE SHOCK, M9545	2
I-TC536STB	INST SHEET: TC536STB	1

Part # TC536STUSN (WITH NITRO)

Item #	Description	Qty
513STS	ADJUSTABLE FRONT STRUT	2
916X212X7U	9/16 X 2-1/2 X 7 U-BOLT	4
TFDD2	DIFFERENTIAL DROP KIT	1
HB-TC536	HDWR BAG: E-BRAKE HDWR	1
T53UCA-L	UPPER CONTROL ARM, DRIVER	1
T53UCA-R	UPPER CONTROL ARM, PASS.	1
HB-14ARM	HDWR BAG: 1/4 FOR UCA BRKT.	1
N8045	NITRO SHOCK W/RED BOOT	2
I-TC536STB	INST SHEET: TC536STB	1

Front Installation:

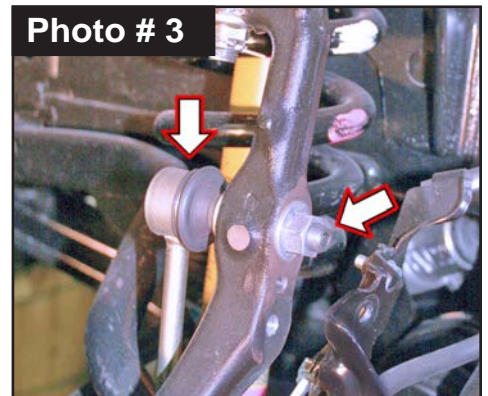
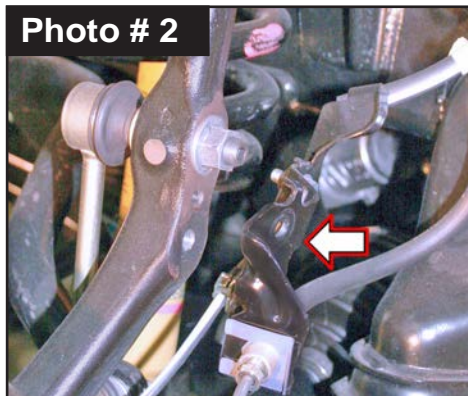
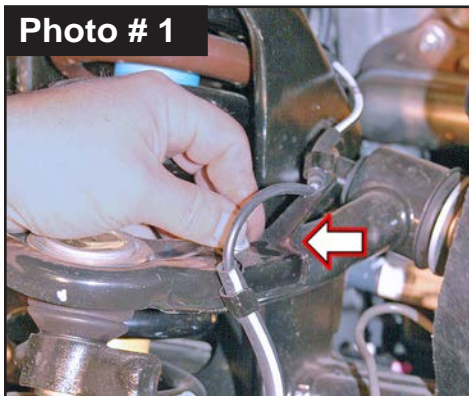
Note: Save all factory components & hardware for reuse, unless noted.

Tech Note: When you remove a OEM nut or bolt, like the ABS fasteners, sway bar link, ball joint nut, etc, put it back into the OEM position for safe keeping. You will not have to look or sort through removed hardware to find the proper factory fastener.

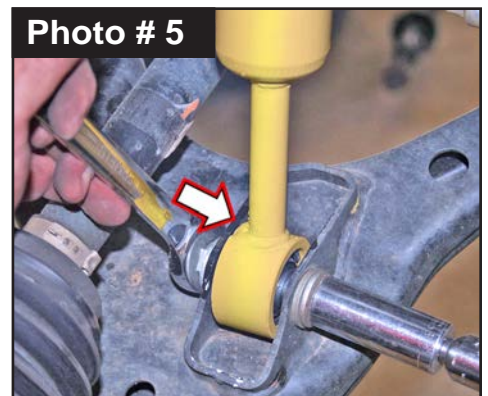
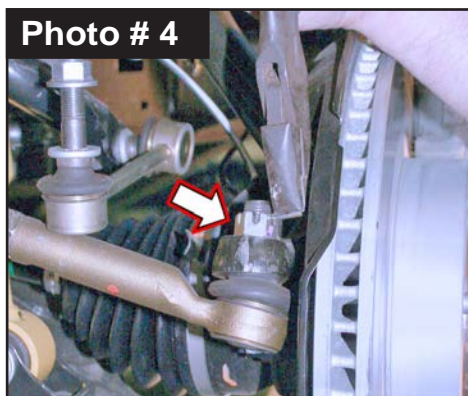
1. With vehicle on flat level ground, set emergency brake & chock rear tires \ wheels.
2. Raise front of vehicle, support frame rails using jack stands at indicated lift points in OEM service manual.
3. Remove front tires \ wheels using a 21mm or 22mm socket.

NOTE: Perform Steps 4-24 on One Side at a Time. Complete Steps 4-24 on One Side, THEN Go to Opposite Side & Repeat Same Steps.

4. Remove OEM ABS line from OEM Upper Control Arm (UCA) using a 10mm socket \ wrench. (See Photo # 1)
5. Disconnect OEM ABS \ brake line bracket from OEM steering knuckle using a 10mm socket \ wrench. (See Photo # 2)
6. Disconnect OEM sway bar end link from OEM steering knuckle using a 17mm socket \ wrench. (See Photo # 3) **Tech Note:** If sway bar link bolt spins, use a 7mm Hex Key to hold bolt.

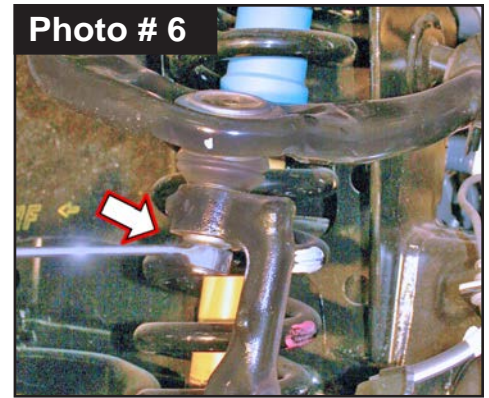


7. Remove cotter pin from outer tie rod end on steering linkage. (See Photo # 4)
Loosen, but do not remove OEM tie rod nut from OEM knuckle using a 19mm socket \ wrench. To unseat tie rod taper, strike tie rod boss of knuckle at tie rod end with ball peen hammer to dislodge. **Note:** ONLY strike knuckle portion. Remove nut & tie rod end from knuckle. Retain factory nut & cotter pin.



8. Disconnect lower strut mount from OEM lower control arm using a 19mm socket \ wrench. (See Photo # 5)
Retain factory hardware.

9. Support OEM lower control arm with a jack.
Remove cotter pin & pull down on OEM upper control arm to loosen ball joint nut. Loosen, but do not remove upper OEM ball joint nut from OEM knuckle using a 19mm socket \ wrench. (See Photo # 6)



To unseat ball joint taper, strike ball joint boss of knuckle with ball peen hammer to dislodge. **Note:** ONLY strike knuckle portion. Remove nut & ball joint from knuckle.

Ease knuckle outward to rest back away from front strut assembly. **CAUTION:** Do not let knuckle fall to side abruptly. It could cause damage to brake lines or pull CV axle shaft out.

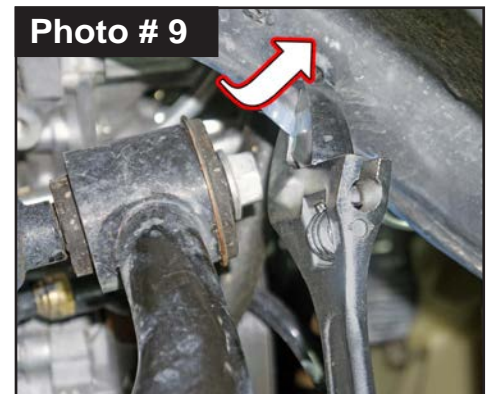
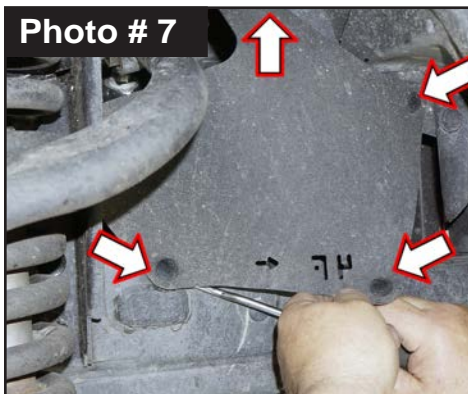
Note: Do Not Overextend CV Axle Shaft.

Tech Note: Use a bungee or ratchet strap to secure knuckle assembly from overextending.

NOTE: Kit Without Skyjacker UCA: Proceed to Step 15.

Kit With Skyjacker UCA: Proceed to Step 10.

10. Remove OEM forward inner fender liner using a fastener removal tool or other suitable tool. (See Photo # 7)
11. Remove OEM nut & washer from OEM UCA bolt using 19mm socket \ wrench. (See Photo # 8)
12. Push OEM UCA bolt forward until it contacts body. Mark where bolt contacts body. Using an crescent wrench or pliers, slowly bend body outward at mark to provide clearance to remove OEM UCA bolt. (See Photo # 9)



13. Guide bolt through any obstructions in engine compartment. **Note:** The bolt does not have to be removed from engine compartment. Bolt will have to be guided between the wiring harness & body. Be careful not to disconnect or damage the wiring harness.

Tech Note: A punch or similar tool may be used to tap bolt out of the frame. Remove remaining OEM washer, bolt & OEM UCA.

14. **Note:** Skyjacker UCA are Side Specific: Part number is on silver bar code label.
T53UCA-L Driver & # T53UCA-R Passenger.
Install Skyjacker UCA to appropriate side of vehicle using OEM hardware & a 19mm socket \ wrench. (See Photo # 10)

Secure, but **Do Not Completely Tighten** control arm hardware at this time. To set bushings properly for ride height, these will be tightened once vehicle is on ground with full vehicle weight on tires \ wheels.



15. **Note:** For proper reassembly realignment, mark top hat upper strut mounting isolator, rubber isolator & coil spring at top of strut. (See Photo # 11)

Disconnect three (3) OEM upper strut mounting nuts from frame mount using a 14mm socket \ wrench. (See Photo # 11)

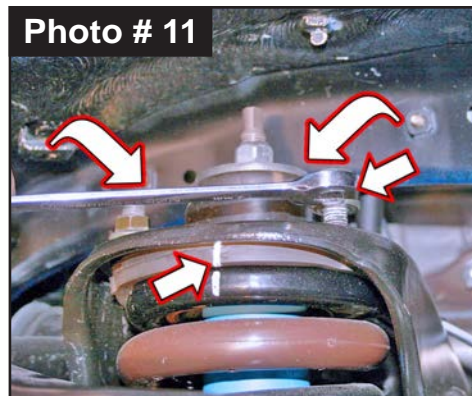
Note: Do NOT remove center strut rod nut.

Retain factory hardware.

Lower jack to allow removal of strut.

Remove OEM strut assembly.

Leave jack support under knuckle assembly, so the CV axles do not over extend.



16. Compress coil spring on strut assembly with a suitable coil spring compressor. Remove upper strut isolator nut using a 8mm & a 19mm socket \ wrench. (See Photo # 12)

Remove OEM upper stem bushing & washer.

Remove top hat upper strut mounting isolator, rubber isolator & coil spring. **Note:** The OEM upper stem bushing, washer & nut will be reused.



NOTE: On the Skyjacker # 513STS Strut, there are six (6) snap ring grooves on strut body for 1" to 3" lift heights.

The coil spring seat retaining ring is pre-assembled by Skyjacker into second (2nd) groove from the top. This will yield 2.5" to 3" of lift.

The first (1st) upper groove is only to be used when 2.5" to 3" of lift is desired after additional weight of aftermarket accessories have been added to the front of the vehicle (i.e. heavy bumper, winch, etc).

The lower grooves can be used if you would like to keep the OEM rake of the vehicle (front of vehicle lower than the rear).

CAUTION: If the coil spring seat retaining ring has been changed from the pre-assembled position, check all suspension components for any contact or interference. If suspension components contact or interference is present, lower the coil spring seat by lowering the coil spring seat retaining ring until no contact or interference is present.

17. Assemble Skyjacker \ OEM Strut Assembly using Skyjacker # 513STS Strut in this order with OEM components: coil spring, rubber isolator & top hat upper strut mounting isolator. (See

Photo # 13) **Note:** The OEM upper stem bushing, washer & nut will be reused.



18. Connect Skyjacker \ OEM Strut Assembly to OEM lower control arm using OEM hardware & a 19mm socket \ wrench. **Note:** Install OEM bolts from rear-to-front of vehicle. (See Photo # 14) Secure, but Do Not



Completely Tighten. These will be tightened with full weight of vehicle is on the ground.

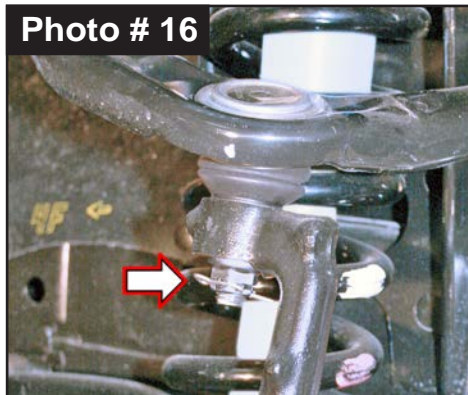
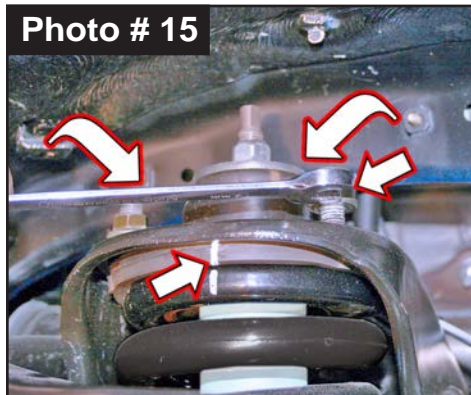
19. Connect Skyjacker \ OEM Strut Assembly to frame mount using the three (3) OEM upper strut mounting nuts & a 14mm socket \ wrench. (See Photo # 15)

NOTE: Kit Without Skyjacker UCA: Proceed to Step 20 & 21.

Kit With Skyjacker UCA: Proceed to Step 22 & 23.

20. Raise the jack under the lower control arm to guide CV axle through OEM knuckle \ hub assembly. Connect OEM UCA ball joint to OEM steering knuckle with OEM hardware using a 19mm socket \ wrench. (See Photo # 16) **Note:** While connecting upper ball joint, be sure CV shaft aligns properly into hub. Torque to 40 ft-lbs. Install OEM cotter pin.

21. Connect OEM ABS \ brake line to OEM UCA with OEM hardware using a 10mm socket \ wrench. (See Photo # 17) Torque to 76 in-lbs. **Proceed to Step 24.**



Kit With Skyjacker UCA:

22. Raise the jack under the lower control arm to guide CV axle through OEM knuckle \ hub assembly. Connect Skyjacker UCA ball joint nut to OEM knuckle with supplied Castle Nut using a 19mm socket \ wrench. (See Photo # 18) **Note:** While connecting upper ball joint, be sure CV shaft aligns properly into hub. Torque 40 ft-lbs. Install supplied cotter pin. Remove the floor jack from under the lower control arm.

CAUTION: Skyjacker UCA Ball Joint is not fully greased from factory. GREASE Must Be Added to Skyjacker UCA Ball Joint using a grease gun. (See Photo # 19)

23. Connect OEM ABS \ brake line to Skyjacker UCA using supplied 1/4" SAE Washer & 1/4" Nylon Insert Nut using a 7/16" socket \ wrench. (See Photo # 20)

Install OEM inner fender liner using OEM hardware. (See Photo # 7) **Proceed to Step 24.**



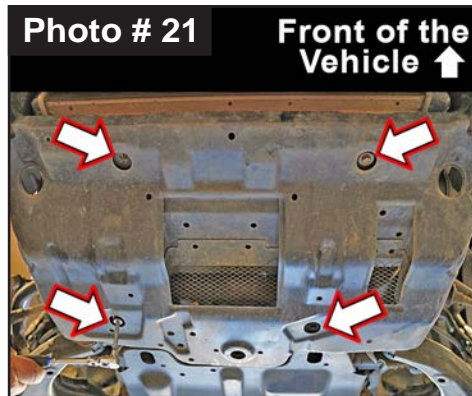
24. Connect OEM outer tie rod to OEM knuckle with OEM nut using a 19mm socket \ wrench. (See Photo # 4) Torque 65 ft-lbs. Install OEM cotter pin.

NOTE: Perform Steps 4-24 on Opposite Side At This Time.

Note: Toyota Tacoma year models have various skid plates \braces designs. This removal is an example. It can vary, but the removal process is similar.

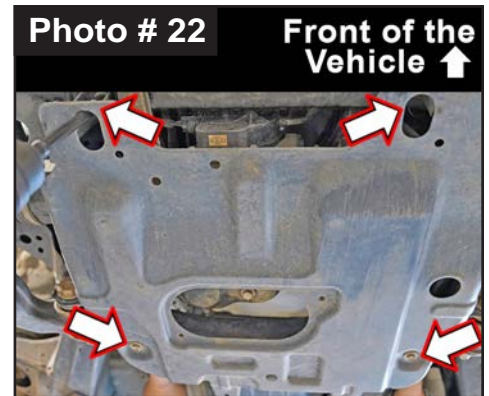
25. If equipped with OEM front skid plate, remove four (4) bolts using a 12mm socket \ wrench. (See Photo # 21)

Tech Note: Hold skid plate when removing fasteners, so it does not fall.



26. If equipped OEM rear skid plate, remove four (4) bolts using a 12mm socket \ wrench. (See Photo # 22)

Tech Note: A socket extension is needed for two (2) forward bolts. Both factory front & rear skid plates & all hardware will be retained.



27. Support front differential using a floor jack.

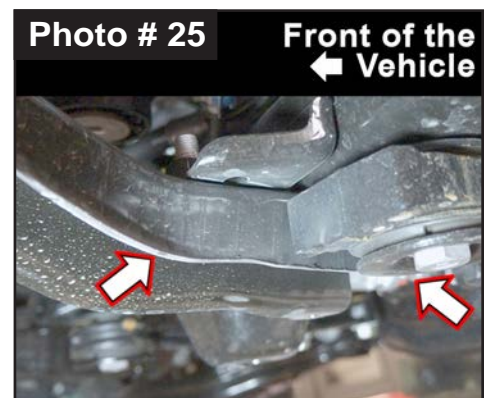
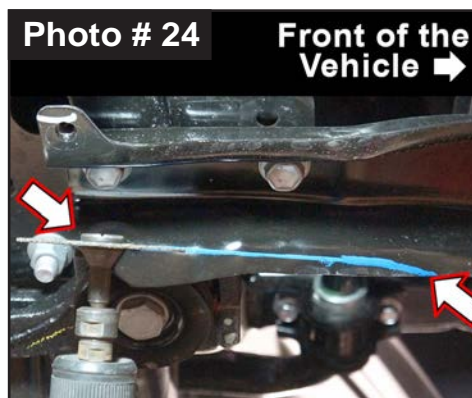
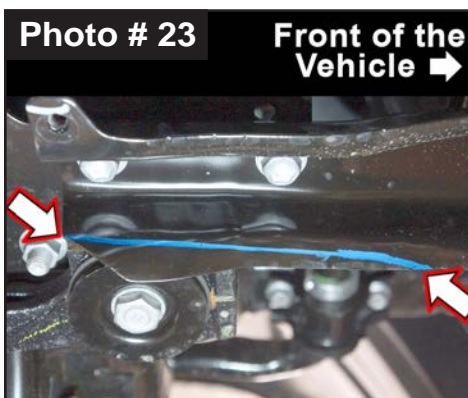
28. It will now be necessary to cut Driver Side OEM Crossmember \Radiator Support Brace for front differential mount clearance when lift is installed. **CAUTION:** When using a power cutting tool or plasma cutter, beware of sparks and undercoating. Take precautions to cover yourself, vehicle and floor from this extremely HOT material.

On Driver Side OEM Crossmember \Radiator Support Brace next to differential mount, you will be trimming the lower bend or lip of the brace. (See Photo # 25)

Starting at the rear corner bend of the lip, mark a diagonal cut line to the Outside Edge of the Lip (approximately eight (8) inches long). (See Photo # 23)

Use a suitable Cut Off Tool, Sawzall Reciprocating Saw, etc to cut along marked edges. (See Photo # 24)

Note: File smooth any burrs or sharp edges on OEM bracket, then paint or undercoat all exposed metal. (See Photo # 25)



29. Locate the two (2) front OEM differential-to-crossmember mounts. Remove the two (2) OEM mount bolts from crossmember using a 22mm & 19mm socket \ wrench. (See Photo # 26 & # 27)

Note: OEM differential mounting brackets will remain attached to differential.

Retain the large OEM concave washers.

Leave differential factory rubber isolators in place.

Photo # 26 Passenger Side Diff Mount

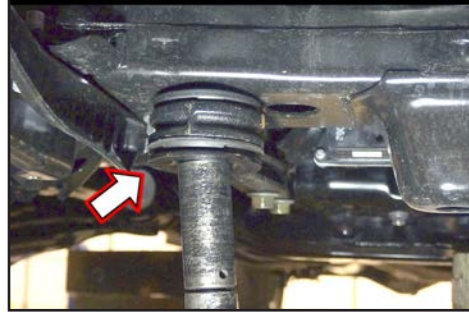


Photo # 27 Driver Side Diff Mount



30. Lower the front differential. Install Skyjacker # TCLS10-B Differential Lowering Spacers between OEM crossmember & front differential mounts.

Install with OEM concave washers, supplied 1/2" x 6-1/2" Coarse Thread Bolt with 1/2" SAE Washer bottom & 1/2" SAE Washer with 1/2" Nylon Insert Lock Nut top. Tighten using 3/4" socket \ wrench.

(See Photo # 28 & 29)

Remove floor jack from under front differential.

Photo # 28 Passenger Side Diff Mount

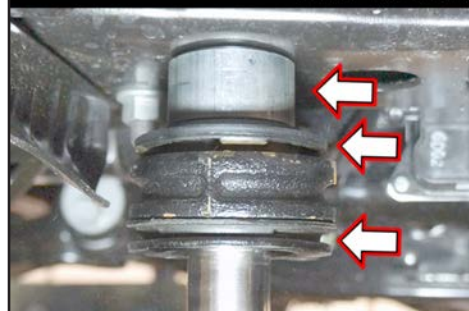
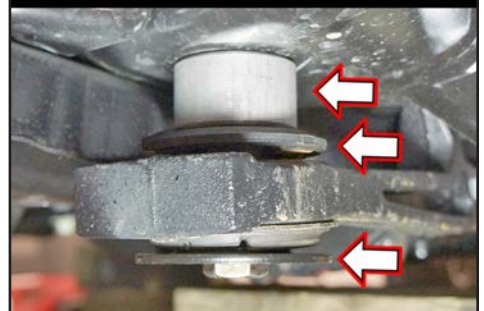


Photo # 29 Driver Side Diff Mount



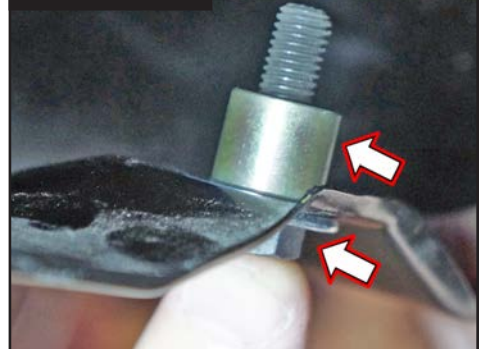
31. If equipped, install OEM rear skid plate. **Note:** Crush Sleeves will be placed at the Front of Rear OEM skid plate and at the Rear of Front OEM skid plate between the OEM Crossmember \ Radiator Support Brace.

Install Front of rear OEM skid plate mounting locations with supplied 8mm x 40mm Metric Bolt with 5/16" USS Washer below with Crush Sleeve above skid plate using a 12mm socket \ wrench. (See Photo # 22 & # 30) Secure, but Do Not Completely Tighten.

Attach rear mounting locations of skid plate with OEM hardware using a 12mm socket \ wrench.

Torque all four (4) skid plate bolts to 216 in-lbs.

Photo # 30



32. Install Front of OEM front skid plate using OEM hardware. Secure, but Do Not Completely Tighten at this time. Let skid plate hang down with room to install the rear mount spacers. Install Rear of OEM front skid plate mounting locations with supplied 8mm x 40mm Metric Bolt with 5/16" USS Washer below with Crush Sleeve above skid plate using a 12mm socket \ wrench. (See Photo # 21 & # 30) Torque all four (4) skid plate bolts to 216 in-lbs.
33. Install front tires \ wheels using a 21mm or 22mm socket. Lower vehicle to ground. Torque lugs to OEM service manual specifications.

Final Front Steps:

1. Start vehicle. Make sure there are no dash lights pertaining to suspension.
2. Jounce vehicle a couple of times. This will help suspension settle to new ride height. Torque OEM Upper Control Arm OR Skyjacker Upper Control Arm using a 19mm socket \ wrench. (See Photo # 10) Torque 85 ft-lbs.
3. Torque OEM sway bar end link to OEM knuckle using a 19mm socket \ wrench. (See Photo # 3) Torque 52 ft-lbs.
4. Torque Skyjacker \ OEM Strut Assembly to OEM lower control arm using a 17mm socket \ wrench. (See Photo # 14) Torque 61 ft-lbs.

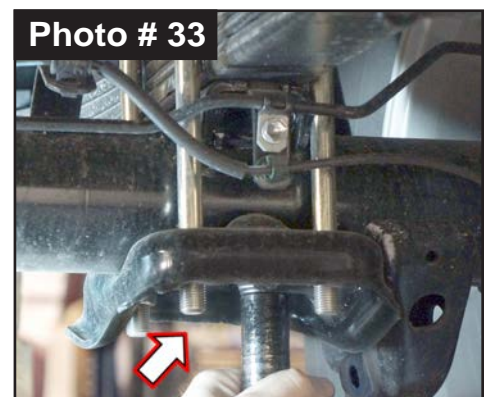
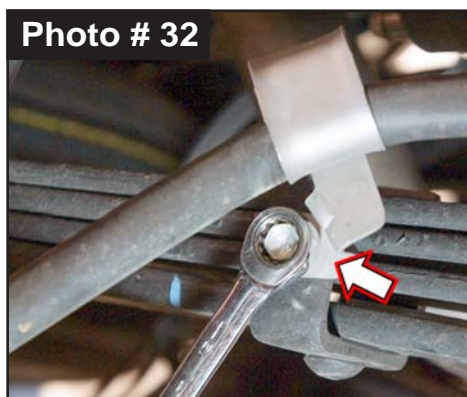
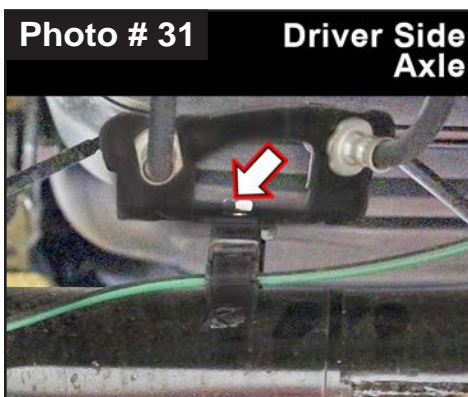
Rear Installation:

Note: Save all factory components & hardware for reuse, unless noted.

1. Chock front tires \ wheels. Raise rear of vehicle & support frame rails using jack stands at indicated lift points in OEM service manual.
2. Remove rear tires \ wheels using a 21mm or 22mm socket.
3. Support rear axle with a hydraulic jack. Allow ample room to lower rear axle.
4. Disconnect OEM brake line bracket from driver side rear axle mount using a 12mm socket \ wrench. (See Photo # 31)

NOTE: Perform Steps 5-7 AND Your Specific Rear Lift Options on One Side At A Time.

5. Disconnect shock from OEM upper frame mount using a 14mm & a 6mm wrench. Disconnect shock from OEM lower axle mount using a 17mm socket \ wrench. Remove OEM rear shocks. Retain lower shock mount hardware.
6. Disconnect OEM E-brake cable from OEM leaf spring using a 12mm socket \ wrench. (See Photo # 32)
7. Securely support rear axle using a floor jack. Remove OEM u-bolts using a 19mm socket \ wrench. (See Photo # 33) **Tech Note:** The rear differential will now be free to move. As a safety precaution & to allow positioning adjustment of axle for rear blocks, u-bolts, etc, secure the axle at the drive shaft yoke with a ratchet strap.

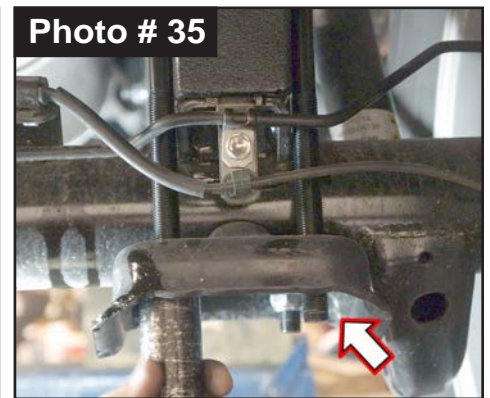
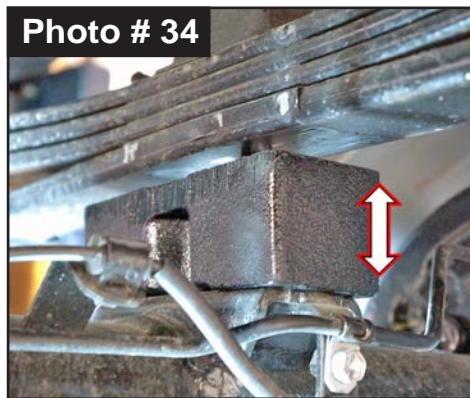


NOTE: Kit With Skyjacker Rear Blocks & U-Bolts: Proceed to Steps 8-11.

Kit With Skyjacker Replacement Leaf Springs: Proceed to Steps 12-14.

8. Lower axle away from leaf springs to allow clearance for block.
9. Clean spring pads of all debris. Position Skyjacker # RB20 2" Block on top of axle pad.
Note: Install with taller end toward rear of vehicle. (See Photo # 34)

Lower rear differential & install Skyjacker Rear Lift Block between axle pad & OEM rear leaf spring.



10. Raise axle to mate leaf springs to lift blocks.
Note: Be sure that leaf spring center bolt head seats properly into block & that block pin seats properly into top of axle pad.

11. Install Skyjacker 9/16" U-Bolts over OEM top plate\leaf springs down into OEM u-bolt plate. Install supplied 9/16" Nylon Insert Nuts using a 7/8" socket\wrench. (See Photo # 35) Torque u-bolts evenly using an 'X' crisscross tightening sequence. Torque to 90 ft-lbs.
Proceed to Step 14.

Kit With Skyjacker Replacement Leaf Springs:

12. **Note:** On some models, it may be necessary to remove the OEM spare tire before removing the OEM leaf springs.

Lower axle away from leaf springs to allow clearance for new springs. Remove OEM rear leaf springs using a 19mm socket\wrench. (Note direction of factory hardware.) Loosen front spring eye bolt. Loosen rear spring eye bolt. Loosen rear shackle eye bolt. Disconnect spring eye bolts & remove leaf spring with rear shackle attached.

Tech Note: A helping hand is recommended to keep leaf spring assembly from falling.

Remove OEM shackle & attach to rear eye of Skyjacker # TCR620S Replacement Rear Leaf Springs.

Note: Skyjacker leaf spring eye with extra spring wrap goes to front. (See Photo # 36)

Tech Note: OEM rear shackle 'closed end' goes to rear.

Clean spring pads of all debris. Install Skyjacker\OEM Shackle Assembly to OEM frame mount with OEM hardware using a 19mm socket\wrench.

Tech Note: A helping hand is recommended.

Secure OEM hardware, but **Do Not Completely Tighten** leaf spring hardware at this time. To set bushings properly for ride height, these will be tightened once vehicle is on ground with full vehicle weight on tires\wheels.

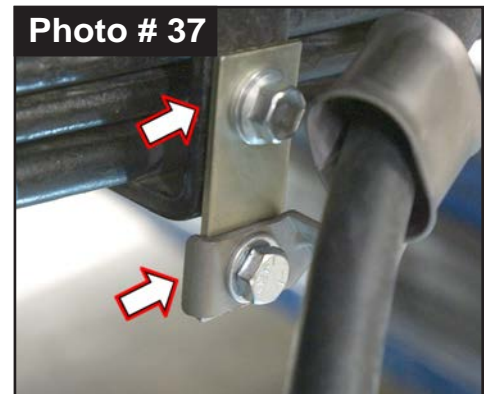
Raise axle to mate leaf springs to axle.

Note: Be sure that leaf spring center bolt head seats properly into top of axle pad.



13. Install Skyjacker 9/16" U-Bolts over OEM top plate\leaf springs down into OEM u-bolt plate. Install supplied 9/16" Nylon Insert Nuts using a 7/8" socket\wrench. Torque u-bolts evenly using an 'X' crisscross tightening sequence. Torque to 90 ft-lbs. **Proceed to Step 14.**

14. Install your choice of Skyjacker Rear Shocks with OEM lower hardware & supplied upper shock hardware. Attach shock to OEM upper frame mount using a 14mm & a 6mm wrench. Attach shock to OEM lower axle mount using a 17mm socket \ wrench. Torque 43 ft-lbs.
15. Connect OEM brake line bracket to driver side rear axle mount using a 12mm socket \ wrench. (See Photo # 31)
16. Install Skyjacker # RBLE10-S E-Brake Extension Bracket to OEM leaf spring with OEM bolt using a 12mm socket \ wrench. Connect OEM E-brake cable bracket to Skyjacker Bracket with supplied 5/16" x 3/4" Coarse Thread Bolt with 5/16" SAE Washer on front & 5/16" SAE Washer with 5/16" Nylon Insert Nut on back using a 1/2" socket \ wrench. (See Photo # 37)
17. Install rear tires \ wheels using a 21mm or 22mm socket. Lower vehicle to ground. Torque lugs to OEM service manual specifications.



Kit With Skyjacker Replacement Leaf Springs:

18. Jounce vehicle a couple of times. This will help suspension settle to new ride height. Torque Sequence using a 19mm socket \ wrench.
 Front spring eye bolt. Torque 89 ft-lbs.
 Rear spring eye bolt. Torque 89 ft-lbs.
 Rear shackle eye bolt. Torque 89 ft-lbs.

Final Notes:

- After installation is complete, double check that all nuts & bolts are tight. Refer to following chart for proper torque specifications. (**Note:** Do not retighten nuts & bolts where thread lock compound was used.)
- With vehicle placed on ground, cycle steering lock to lock & inspect steering, suspension, brake lines, front & rear drivelines, fuel lines & wiring harnesses for proper operation, tightness & adequate clearance.
- Have headlights readjusted to proper settings.
- Have a qualified alignment center align vehicle to OEM specifications.
- After first 100 miles, check all hardware for proper torque & periodically thereafter.

TORQUE SPECIFICATIONS					
INCH SYSTEM			METRIC SYSTEM		
Bolt Size	Grade 5	Grade 8	Bolt Size	Class 8.8	Class 10.9
5/16	180 in-lbs	240 in-lbs	6MM	60 in-lbs	108 in-lbs
3/8	30 ft-lbs	35 ft-lbs	8MM	216 in-lbs	23 ft-lbs
7/16	45 ft-lbs	60 ft-lbs	10MM	32 ft-lbs	45 ft-lbs
1/2	65 ft-lbs	90 ft-lbs	12MM	55 ft-lbs	75 ft-lbs
9/16	95 ft-lbs	130 ft-lbs	14MM	85 ft-lbs	120 ft-lbs
5/8	135 ft-lbs	175 ft-lbs	16MM	130 ft-lbs	165 ft-lbs
3/4	185 ft-lbs	280 ft-lbs	18MM	170 ft-lbs	240 ft-lbs
The Above Specifications Are Not to Be Used When the Bolt Is Being Installed With a Bushing.					

Seat Belts Save Lives. Please Wear Your Seat Belt.