



www.skyjacker.com

97-06 Jeep Wrangler TJ Rock Ready I 4” Suspension Lift Installation Instructions

REQUIRED TOOL LIST:

- * Safety Glasses
- * Metric / Standard Wrenches & Sockets
- * Allen Wrenches
- * Drill & Assorted Drill Bits
- * Grinder / Cut Off Wheel
- * Pipe Wrench
- * Floor Jack
- * Jack Stands
- * Measuring Tape
- * Torque Wrench



Before beginning the installation, thoroughly & completely read these instructions & the enclosed driver’s WARNING NOTICE. Affix the WARNING decal in the passenger compartment in clear view of all occupants. Please refer to the Parts List to insure that all parts & hardware are received prior to the disassembly of the vehicle. If any parts are found to be missing, contact SKYJACKER® Customer Service at 318-388-0816 to obtain the needed items. If you have any questions or reservations about installing this lift kit, call SKYJACKER® Technical Assistance at 318-388-0816.

Make sure you park the vehicle on a level concrete or asphalt surface. Many times a vehicle is not level (side-to-side) from the factory & is usually not noticed until a lift kit has been installed, which makes the difference more visible. Using a measuring tape, measure the front & rear (both sides) from the ground up to the center of the fender opening above the axle. Record this information below for future reference.

Driver Side Front: _____ Passenger Side Front: _____

Driver Side Rear: _____ Passenger Side Rear: _____

IMPORTANT NOTES:

- This lift is determined from the amount of lift to the front of the vehicle, while only lifting the rear to a position level with the front.
- If larger tires (10% more than the stock diameter) are installed, speedometer recalibration will be necessary. Contact your local Jeep dealer or an authorized dealer for details.
- After installation a qualified alignment facility is required to align the vehicle to factory specifications.
- 6-Speed Transmission models may require additional modifications, contact Skyjacker @ 318-388-0816 for additional information.

Kit Box Breakdown:

Part #: TJ40RRX

<u>ITEM#</u>	<u>DESCRIPTION</u>	<u>QTY</u>
TJ60DFB-B	TJ 6-9"/DRVR FRAME BRACKET	1
TJ60PFB-B	TJ 6-9"/ PASS FRAME BRKT	1
JLL2501-SVX	TJ LWR LNK BENT SGL FLEX/PR	2
TJRTB	TJ REAR TRACK BAR BRACKET	1
JSRB231A	NP231 TRANSFER CASE SHIFTER	1
FBL44-RBL98	BRAKE LINE SET 97-01 TJ	1
TJRSB10	99>TJ,REAR SHOCK RELOC BRKT	1
HB-TJ40RRX	HDWR BAG: TJ40RRX COM BOX	1
I-TJ40RRX1	INSTRUCTION SHEET: TJ40RRX	1

Part #: JLL2501-SX

<u>ITEM#</u>	<u>DESCRIPTION</u>	<u>QTY</u>
JLL2501-L	TJ LOWER LINK BENT SGL FLEX	2
RR114X1R	NG ROD END 1 1/4"RIGHT HAND	2
114RFTJN	1 1/4" RIGHT HAND JAM NUT	2
HB-LL-NGSX	HDWR BAG:LWR LNK NG SGL FLX	1

Hardware Bag Breakdown:

HB-LL-NGSX **HARDWARE BAG**

<u>ITEM#</u>	<u>DESCRIPTION</u>	<u>QTY</u>
2617	BUSHING DGE RAM LWR LNK	4
LS2645	LINK SLEEVE 2.645" LOWER	2
ZF316	ZERK FITTING ALEMITE, 3/16"	2
RR114-14	ROD END BUSHING 14MM ID	4

Part #: TJRTB

<u>ITEM#</u>	<u>DESCRIPTION</u>	<u>QTY</u>
TJRTB-B	TJ REAR TRK BAR RELOC BRKT	1
HB-TJRTB	HDWR BAG:2.5-4"RR TRAC BRKT	1

Hardware Bag Breakdown:**HB-TJRTB HARDWARE BAG**

ITEM#	DESCRIPTION	QTY
SSTJRTB	SPACER SLEEVE FOR TJRTB	1
12X70MMB	12 X 70 METRIC BOLT/10.9	1
12MMN	12 MM NUT (METRIC)	1
12X112FTB	1/2 X 1 1/2 FINE THRD BOLT	1
12FTN	1/2-20 FINE N/I LOCK NUT	1
12SAEW	1/2 SAE WASHER	3
516X1FTB	5/16 X 1 FINE THRD BOLT	2
516FTN	5/16" FINE THRD N/I LOCKNUT	2
38FSFTN	3/8-24 FLANGE SERRATED NUT	2
516SAEW	5/16 SAE WASHER	2
SS312-UL	JSRB SLEEVE, .312/.302 LONG	1

Part #: JSRB231A

ITEM#	DESCRIPTION	QTY
TJSRB-1	TJ MAIN SHIFT RELOCATE BRKT	1
TJSRB-2	TJ AUX. SHIFT RELOCATE BRKT	1
HB-JSRB231A	HDWR BAG: JSRB231A T/C BRKT	1
I-JSRB231	INST. SHEET FOR JSRB231	1

Hardware Bag Breakdown:**HB-JSRB231A HARDWARE BAG**

ITEM#	DESCRIPTION	QTY
516X1FTB	5/16 X 1 FINE THRD BOLT	2
516FTN	5/16" FINE THRD N/I LOCKNUT	2
38FSFTN	3/8-24 FLANGE SERRATED NUT	2
516SAEW	5/16 SAE WASHER	2
SS312-UL	JSRB SLEEVE, .312/.302 LONG	1
SS1062-UL	JSRB SLEEVE,1.062/1.052LONG	1
FSB3838	FLANGED SLV BRG 3/8" X 3/8"	2
TS38	EXT.TUBE,3.25"/FOR JSRB KIT	1

Part #: FBL44

ITEM#	DESCRIPTION	QTY
FBL44S	3/8RD BANJO-F03/38FE,23.375	2
3CCW	COPPER CRUSH WASHER, 3/8"	4
BE15	BRAKE LINE EXTENSIONS	2
HC1	HOSE/HORSESHOE CLIP	2
BTIE	RED BOOT TIE	2
I-BL	INSTRUCTIONS: BRAKE LINES	1

I-TJ40RRX1

Part #: RBL98

ITEM#	DESCRIPTION	QTY
RBL98S	38TEE-90DGRE,SKJF09,23.375"	1
BE15	BRAKE LINE EXTENSIONS	1
HC1	HOSE/HORSESHOE CLIP	1
I-BL	INSTRUCTIONS: BRAKE LINES	1

Part #: TJRSB10

ITEM#	DESCRIPTION	QTY
JRSRB1-B	JEEP TJ REAR SHOCK BRACKET	2
HB-TJRSB10	HDWR BAG: TJRSB10	1
I-TJRSB10	INST SHEET FOR TJRSB10	1

Hardware Bag Breakdown:

HB-TJRSB10 HARDWARE BAG

ITEM#	DESCRIPTION	QTY
12X3FTB	1/2 X 3 FINE THREAD BOLT	4
38X1FTB	3/8 X 1 FINE THREAD BOLT	2
12FTN	1/2-20 FINE N/I LOCK NUT	4
38FTN	3/8-24 FINE N/I LOCK NUT	2
12SAEW	1/2 SAE WASHER	8
38SAEW	3/8 SAE WASHER	4
12XTFW	1/2"EXTRA THICK FLAT WASHER	4
142121	ES24 SLEEVE/402087 1.38"	2

Hardware Bag Breakdown:

HB-TJ40RRX HARDWARE BAG

ITEM#	DESCRIPTION	QTY
10MMX90MMB	10 X 90 METRIC BOLT/10.9	2
10X110MMB	10MM X 110 BOLT / 10.9	2
12MMX80B	12 X 80 METRIC BOLT/10.9	4
12X3FSB	1/2 X 3 FLAT SOCKET BOLT	6
12X412FTB	1/2 X 4 1/2 FINE THD GRD. 8	4
12X30SHB	12MM X 30 SOCKET HEAD BOLT	2
12SAEW	1/2 SAE WASHER	14
12FTN	1/2-20 FINE N/I LOCK NUT	4
BPS30-B	BUMP STOP SPACER BLK, 3"	2

Kit Box Breakdown:

Part #: TJ40XRR1

<u>ITEM#</u>	<u>DESCRIPTION</u>	<u>QTY</u>
SBE120	DBL DISC LINKS TJ 2-4" FRT	1
SBE500	SWAY BAR END LINKS REAR PR	1
BP50S	BUMP STOP WRANGLER TJ	2
RRSP20	STRG BX SKID PLATE 97-06 TJ	1
TBA10	ADJ FRT TRK BAR W/STRG ST	1
TJ403SP	SKID PLATE BRKTS/2003 TJ	1
JA750	PITMAN ARM TJ,YJ W/PWR STRG	1

Part #: SBE120

<u>ITEM#</u>	<u>DESCRIPTION</u>	<u>QTY</u>
SBE102-L	SWAY BAR END LINK,FRT-SGL	2
SBE-E2	SWAY BAR END LK EYE, WELDED	4
14X112SPIN	1/4 X 1 1/2 SNAPPER PIN	4
HB-SBENB01	HDWR BAG:SBE120,225,228,401	1
I-SBE120/124	INST SHEET - SBE120/124/320	1

Hardware Bag Breakdown:

HB-SBENB01 **HARDWARE BAG**

<u>ITEM#</u>	<u>DESCRIPTION</u>	<u>QTY</u>
SBB2	SWAY BAR U-BRACKET FOR SBE	2
141509	ES25 SLEEVE/403646 1.50"	4
12X212CTBG5	1/2 X 2 1/2 CRS THD BLT,GR5	2
10X35MMB	10MM X 35 METRIC BOLT/10.9	2
12CTCLN	1/2"COARSE-CENTER LOCK NUT	2
10MMN	10 MM N/I LOCKNUT	2
38SAEW	3/8 SAE WASHER	2
12SAEW	1/2 SAE WASHER	2

Part #: SBE500

<u>ITEM#</u>	<u>DESCRIPTION</u>	<u>QTY</u>
SBE500-L	SWAY BAR END LINK,REAR SGL	2
HB-142118-4	HARDWARE BAG FOR SBE500	1

Hardware Bag Breakdown:

HB-142118-4 **HARDWARE BAG**

ITEM#	DESCRIPTION	QTY
142118	ES34 SLEEVE/404094 1.66"	4

Part #: RRSP20

ITEM#	DESCRIPTION	QTY
RRSP20-S	STRG GEAR BX SKID PLATE R/R	1
HB-SSP10	HARDWARE BAG FOR SSP10	1
I-SSP10	INSTRUCTIONS FOR SSP10	1

Hardware Bag Breakdown:

HB-SSP10 **HARDWARE BAG**

ITEM#	DESCRIPTION	QTY
RRSP20-S	STRG GEAR BX SKID PLATE R/R	1
HB-SSP10	HARDWARE BAG FOR SSP10	1
I-SSP10	INSTRUCTIONS FOR SSP10	1

Part #: TBA10

ITEM#	DESCRIPTION	QTY
TBA10-B	TRACK BAR FOR JEEP	1
RE34X34R	ROD END 3/4" RIGHT HAND THR	1
34RFTJN	3/4" RIGHT HAND JAM NUT	1
7400WS	WHITE STEERING DAMPER	1
BTIE	RED BOOT TIE	1
B10RS	RED BOOT	1
NSS	NITRO SHOCK DECAL	1
I-TBA10	INSTRUCTIONS FOR TBA10	1
HB-TBA60	HDWR BAG FOR TBA10/60/80	1
WD1	WARNING DECAL	1

Hardware Bag Breakdown:**HB-TBA60 HARDWARE BAG**

ITEM#	DESCRIPTION	QTY
TJDLB	TJ DRAG LINK BUSHING,1.125"	2
12X212FSB	1/2 X 2 1/2 FLAT SOCKET BLT	1
12X312FTB	1/2 X 3 1/2 FINE THREAD BLT	1
12USSW	1/2 USS WASHER	1
12SAEW	1/2 SAE WASHER	1
12STVFTN	1/2" STOVER LKNUT, FINE THD	1
2888	BUSHING JEEP TRACK BAR	2
142121	ES24 SLEEVE/402087 1.38"	1
81004	TAPERED SLEEVE, 1/2" I.D.	1
LT100	NUTS N' BOLTS 427 1 ML TUBE	1
HOURGLASS 5/8	HOURGLASS 5/8 SHOCK BUSHING	2
P837	STAB TAPERED STUD/141264	1
140629	EB6 STUD BAG - P932/140629	1
7146-B	TJ TRACK BAR/STAB BRACKET	1
12STVCTN	1/2"STOVER COARSE, LOCK NUT	1

Part #: TJ403SP

ITEM#	DESCRIPTION	QTY
TJ03SPRDB-1	03 SKID PLT,REAR DRIVER BKT	1
TJ03SPRPB-2	03 SKID PLT,REAR PASS BRKT	1
TJ03SPFDB-3	03 SKID PLT,FRONT DRIV BRKT	1
TJ03SPFPB-4	03 SKID PLT,FRONT PASS BRKT	1
HB-TJ403SP	HDWR BAG:2003 SKID PLAT MOD	1
I-TJ403SP	INST SHEET FOR TJ403SP	1

Hardware Bag Breakdown:**HB-TJ403SP HARDWARE BAG**

ITEM#	DESCRIPTION	QTY
38X114FTB	3/8 X 1 1/4 FINE THD/GRD 8	6
38FTN	3/8-24 FINE N/I LOCK NUT	6
38SAEW	3/8 SAE WASHER	12

Pre-Installation Tips:

Now you are ready to "set" the length of the new Rock Ready™ link assemblies.

It is very important to position the swivel ball socket so that the bushings are exactly centered. Measure the length of the link assembly between the center of the eyelet & the rod end. Rotate the rod end as needed, being sure to keep the rod end square with the eyelet end until the link assembly measures:

4" Measurements

Lower Front should be set @ 29 1/4"

Lower Rear should be set @ 29 1/4"

These are pre-alignment measurements only. Final Measurements are to be set by a qualified alignment facility.

On the rod end, rotate the jam nut against the steel tubing. Hold the rod end in place with a pipe wrench & use another pipe wrench on the jam nut to completely tighten.

Note: The jam nut must be tightened against the steel tubing before installation.

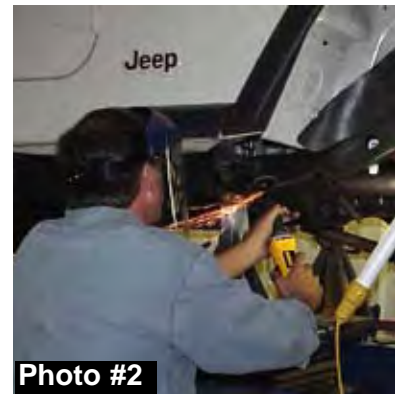


Front Installation:

1. Secure & properly block the tires of the vehicle on a level concrete or asphalt surface.
2. Raise the front of the vehicle & support the vehicle with jack stands.
3. Remove the front tires, front shocks, steering stabilizer, & track bar.
4. Remove the draglink from the pitman arm, & install the new Skyjacker pitman arm at this time.
5. Remove the sway bar end links & brake calipers from the OEM mounts. (See Photo # 1)
6. Lower the front differential & remove the front coil springs.
7. Remove the upper bump stop by pulling back & forth with pliers & install the new Skyjacker poly bump stops.

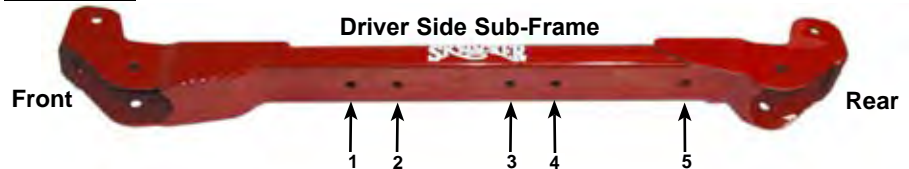


8. Remove the front lower control arms. Using care, grind off the OEM lower control arm mounts & paint the exposed surface. (See Photo # 2)



9. Place a jack under the transmission skid plate. Remove the mounting hardware & lower the skid plate two inches.

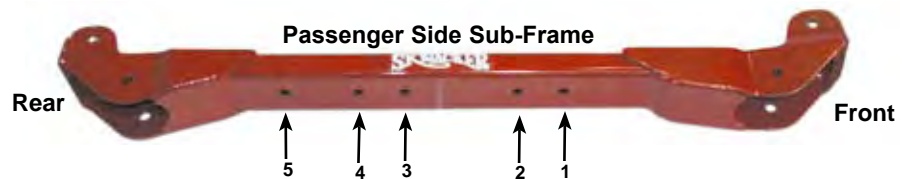
Photo #3



Note: Skyjacker sub frames are designed to work on 1997-2006 Jeep TJ's. Therefore, each sub frame will have multiple mounting holes.

- **1997-2002 models use mounting holes 1,3 & 5.**
- **2003-2006 models will use holes 2 & 4. See I-TJ403SP instruction for the 3rd mounting bolt & skid plate modifications.**

10. Place the new Skyjacker left & right sub frames between the bottom of the frame & the skid plate. Fasten using the 1/2" X 3" flat socket bolts on 97-02 models & use the 12mm x 80mm bolts on 03-06 models. (See Photo # 3) **Note:** On some models it may be necessary to grind down the OEM rear step bar nut insert on the outside of the frame. This will allow for the sub frame rail to mount flush.



11. Install the new Skyjacker transfer case shifter bracket (Part # JSRB231A) using the instruction provided.

12. With the new Skyjacker sub frame attached with the lower bolts, drill the outer mounting locations using a 1/2" drill bit. Drill completely through the frame & mounting tab located on the back side of the sub frame. (See Photo # 4) Once drilled, install the 1/2" x 4" fine thread bolt, washers, & nuts.



13. The new Skyjacker lower control arms mount to the OEM lower location at the differential & to the new position of the Skyjacker sub frame. Insert two large stepped spacers into the rod end & two poly bushings & sleeve into the eyelet end of the new Skyjacker lower control arms & fasten using the OEM hardware. Install with the rod end to the axle mount & the bushing end to the frame mount. (See Photo # 5)



Photo #5

14. Lower the front differential & install the new Skyjacker coil springs placing the top of the coil spring over the upper bump stop mount first. Provided with the coil springs is the clip & hardware to fasten the passenger front coil spring like the driver's side. (See Photo # 6) The OEM manufacturer provides the hole in the left lower coil spring mount for you to fasten the coil spring securely to its seat. Install it the same as on the driver side.



Photo #6

5/16" x 3/4"
thread cutter
flange bolt.

15. Install the new Skyjacker adjustable track bar by first greasing & installing the two poly bushing & sleeve. Insert the poly bushing end into the OEM steering stabilizer location on the passenger side of the axle, not the OEM track bar location. Install the new Skyjacker steering stabilizer mounting bracket with the tab over the OEM sway bar end link stud with the OEM nut. Use the 1/2" x 2 1/2" flat socket head bolt & stover nut to bolt the new Skyjacker bracket to the track bar. (See Photo # 7) **Note:** In extreme situations (Depending on pinion angle & caster settings), the drag link may contact this bracket when turning. This bracket can be slightly ground for additional clearance, if needed.



Photo #7

16. Install the frame end of the new Skyjacker track bar by following the hardware pictured. (See Photos # 8 & 9) Being sure to keep the rod end square (parallel) with the frame mount. **Note:** Be sure no more than 1/2" of threads are extended from the bar (including the jam nut). Hold the rod end in place with a crescent wrench & tighten using a pipe wrench or crescent wrench on the jam nut.



Photo #8

17. Install the steering stabilizer mounting stud in the hole of the drag link & upper mounting hole on the new Skyjacker track bar bracket. Install the provided 5/8 hourglass bushings into the new Skyjacker steering stabilizer & attach to the new Skyjacker studs. (See Photo # 10)



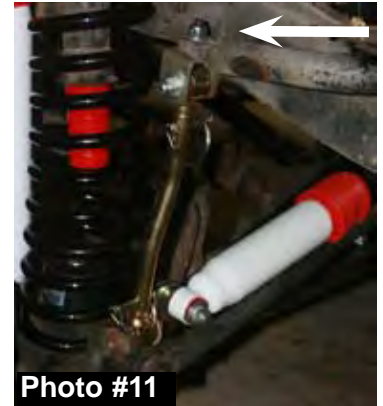
Photo #9

18. Install the new Skyjacker front brake lines using the instructions provided with the brake line kit.



Photo #10

19. The new Skyjacker end link mounting bracket should be mounted to the bottom of the sway bar with the bolt pointing up through the sway bar & with the nut & washer applied on top. (See Photo # 11) Apply grease to the metal sleeves & insert them into the end link eyes. The top 1/2" x 2 1/2" bolt connecting the bracket to the end link must be installed with the nut to the outside of the vehicle to provide adequate clearance to the frame. Install the new Skyjacker double disconnect end links on the inboard side of the axle bracket. (See Photo # 12)



20. Install the front tires & lower the vehicle to the ground.

Rear Installation:

1. Raise the rear of the vehicle & support the vehicle with jack stands.
2. Remove the rear tires & rear shocks.
3. Disconnect the rear track bar from the differential & remove the rear sway bar endlinks.



4. Lower the differential & remove the rear coil springs.
5. Remove the upper bump stop by pulling back & forth with pliers. Remove the 10mm bolt from inside the bump stop cup & install the polymer bump stop spacer & OEM cup using the supplied 10mm x 70mm bolt. Reinstall the OEM bump stop to the OEM bump stop cup. (See Photo # 13)



6. Install the new Skyjacker rear coil springs.
7. Place the new Skyjacker rear track bar relocation bracket over the OEM track bar mount at the differential. Place the new 12mm x 70mm bolt through the OEM lower track bar location. Use the supplied spacer sleeve to fill the space where the OEM track bar was located. Apply the lock nut & tighten. (See Photo # 14)



8. Drill a 1/2" hole through the hole in the driver's side end of the new Skyjacker bracket. Install the 1/2" x 1 1/2" bolt with a washer on each side through the newly drilled hole & tighten with the self-locking nut. Install the 5/16" x 1" fine thread bolt, washers, & nut in the forward hole of the new bracket. (See Photo # 15)

9. Assemble the new Skyjacker rear sway bar end links by applying grease to the metal sleeves & inserting them into each eye. Install using OEM hardware.



10. Remove the lower control arms & rear lower control arm mounts at the frame. Repeat the process from the front lower control arm mounts. Clean & paint the exposed surfaces. The new Skyjacker rear lower control arms mount to the OEM lower location at the differential & to the new position of the sub frame. Insert two stepped spacers into the rod end & two poly bushings & sleeve into the eyelet end of the new Skyjacker lower control arm. Install the new Skyjacker lower control arm with the rod end to the axle mount & the bushing end to the frame mount. Fasten using the OEM hardware. (See Photo # 16)

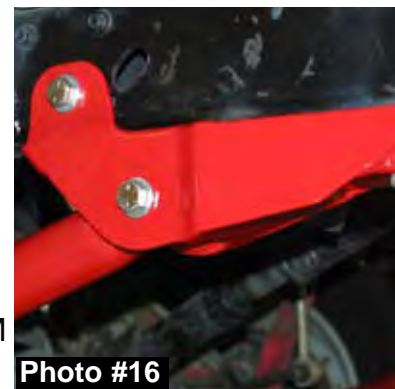


Photo #16

11. Install the rear brake line & rear shocks.

12. Install the rear tires & lower the vehicle to the ground.

FINAL NOTES:

- After the installation is complete, double check that all nuts & bolts are tight. Refer to the following chart again for the proper torque specifications. (Do not retighten the nuts & bolts where thread lock compound was used.)
- With the vehicle placed on the ground, cycle the steering lock to lock & inspect the steering, suspension, brake lines, front & rear drivelines, fuel lines, & wiring harnesses for proper operation, tightness, & adequate clearance.
- Have the headlights readjusted to the proper settings.
- Have a qualified alignment center realign the front end to the factory specifications.
- Retorque all the bolts after the first 100 miles.

<u>TORQUE SPECIFICATIONS</u>					
<u>INCH SYSTEM</u>			<u>METRIC SYSTEM</u>		
Bolt Size	Grade 5	Grade 8	Bolt Size	Class 8.8	Class 10.9
5/16	15 FT LB	20 FT LB	6MM	5 FT LB	9 FT LB
3/8	30 FT LB	35 FT LB	8MM	18 FT LB	23 FT LB
7/16	45 FT LB	60 FT LB	10MM	32 FT LB	45 FT LB
1/2	65 FT LB	90 FT LB	12MM	55 FT LB	75 FT LB
9/16	95 FT LB	130 FT LB	14MM	85 FT LB	120 FT LB
5/8	135 FT LB	175 FT LB	16MM	130 FT LB	165 FT LB
3/4	185 FT LB	280 FT LB	18MM	170 FT LB	240 FT LB

- The above specifications are not to be used when the bolt is being installed with a bushing.

Seat Belts Save Lives, Please Wear Your Seat Belt.

Part #
TJ40RR1K





www.skyjacker.com

REQUIRED TOOL LIST:

- Safety Glasses
- Metric / Standard Wrenches & Sockets
- Drill & Assorted Drill Bits
- Transmission Jack
- Reciprocating Saw / Cut Off Wheel
- Measuring Tape
- Torque Wrench

Note: 03-06 Jeep TJ models will require modification to the OEM skid plate in order to install the Skyjacker sub frame.

1. Remove the front transmission skid plate & cross member assembly.
2. Disconnect it from the transfer case skid plate & frame rails.
3. Using a transmission jack, support the transmission.
4. Remove the six retaining bolts that attach the transfer case skid plate to the frame.
5. With the skid plate removed, use the supplied templates to scribe & cut the rear of the OEM transfer case skid plate. (See Photos # 1, # 2, & # 3)
6. Photo # 4 shows the portion removed from the driver side & Photo # 5 shows the portion removed from the passenger side.



Photo #1
Driver Side Shown Above



Photo #2
Passenger Side Shown Above



Photo #3



Photo #4



Photo #5

7. With the transfer case skid plate modified, locate the new Skyjacker rear mounting brackets. Mount the new Skyjacker bracket to the new control arm mounting point on the sub frame using the OEM lower control arm bolt. Install the bracket so that it is flush against the sub frame & the back of the skid plate.



Photo #6

8. Once installed, mark & drill the new mounting point on the skid plate, using a 3/8" drill bit. Install & tighten the supplied 3/8" hardware at this time. (See Photo # 6)

9. Locate the front transmission skid plate & cross member assembly removed in Step # 1. Locate the outside frame mounting points on the cross member. Measure 3 1/8" from the inside of the mounting hole toward the center of the cross member. Using a straight edge, mark the cross member at this point. Repeat this process on both sides. (See Photo # 7)

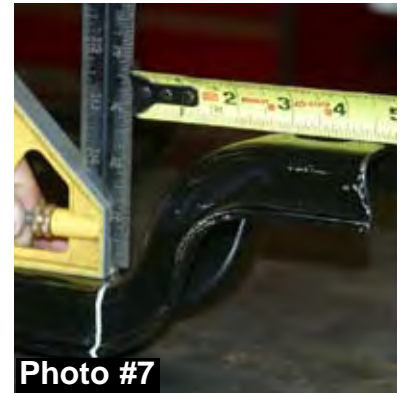


Photo #7

10. Using a reciprocating saw or similar tool, cut the outer mounting points off at the mark made in Step # 7. (See Photo # 8)

11. With the outer mounting points cut off, reinstall the cross member & transmission skid plate assembly. Mount the new Skyjacker bracket to the new control arm mounting point on the sub frame, using the OEM hardware. Install the bracket so that it is flush against the sub frame & flush with the top of the cross member. (See Photo # 9)



Photo #8

12. Mark the new mounting points in the top of the cross member & remove the cross member at this time. Drill the new mounting points, using a 3/8" drill bit. (See Photo # 10)

13. With the new mounting points drilled, reinstall the cross member & the new Skyjacker mounting bracket. Attach the new Skyjacker bracket to the cross member using the supplied 3/8" hardware. (See Photo # 11)

Refer back to lift kit instructions at this time.

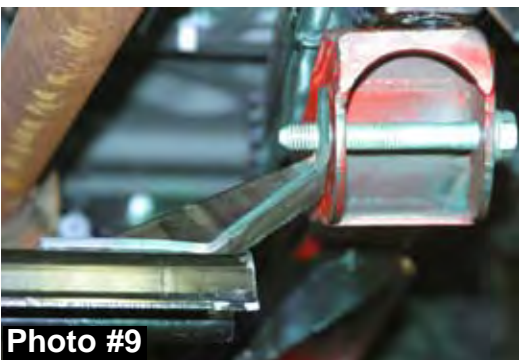


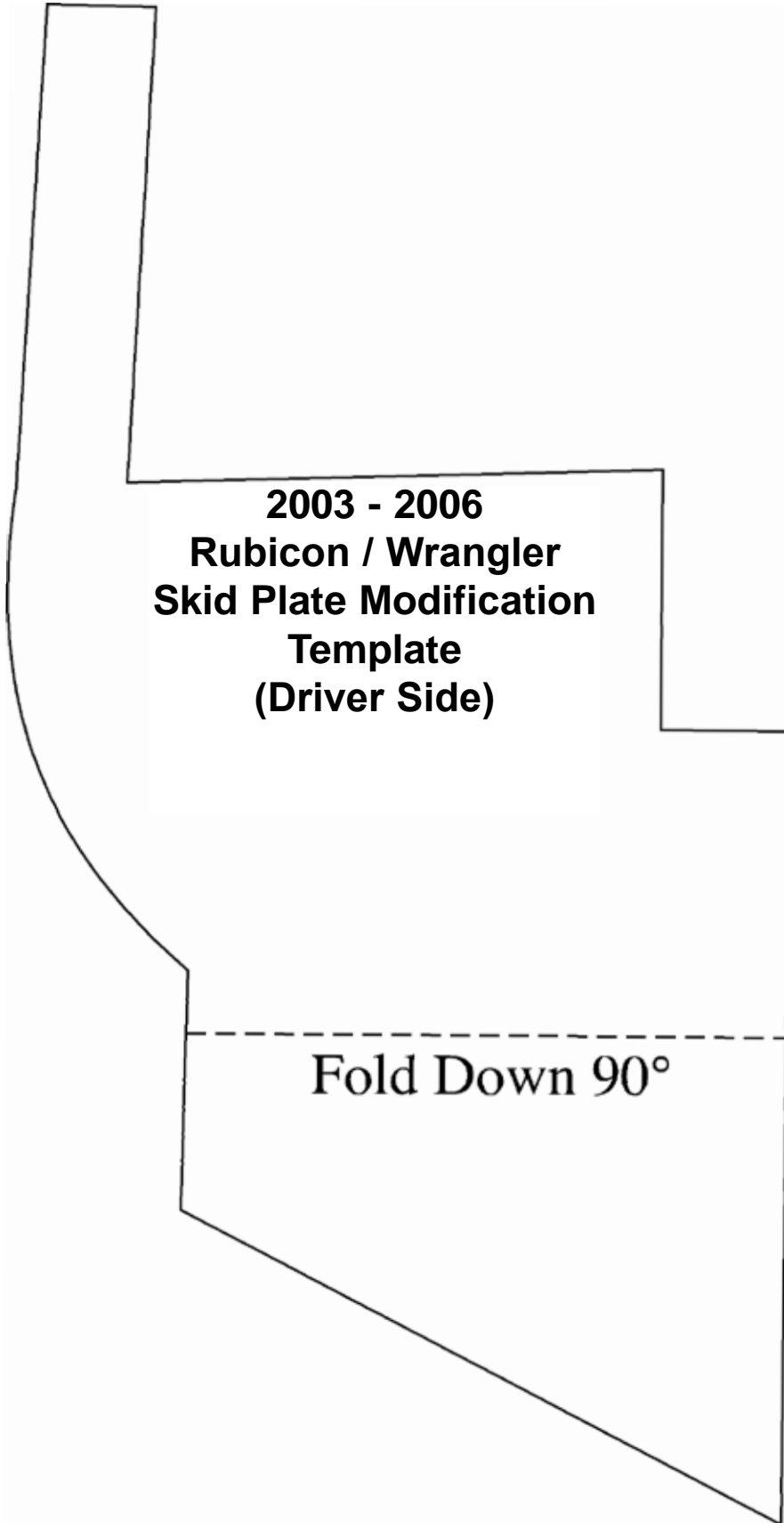
Photo #9

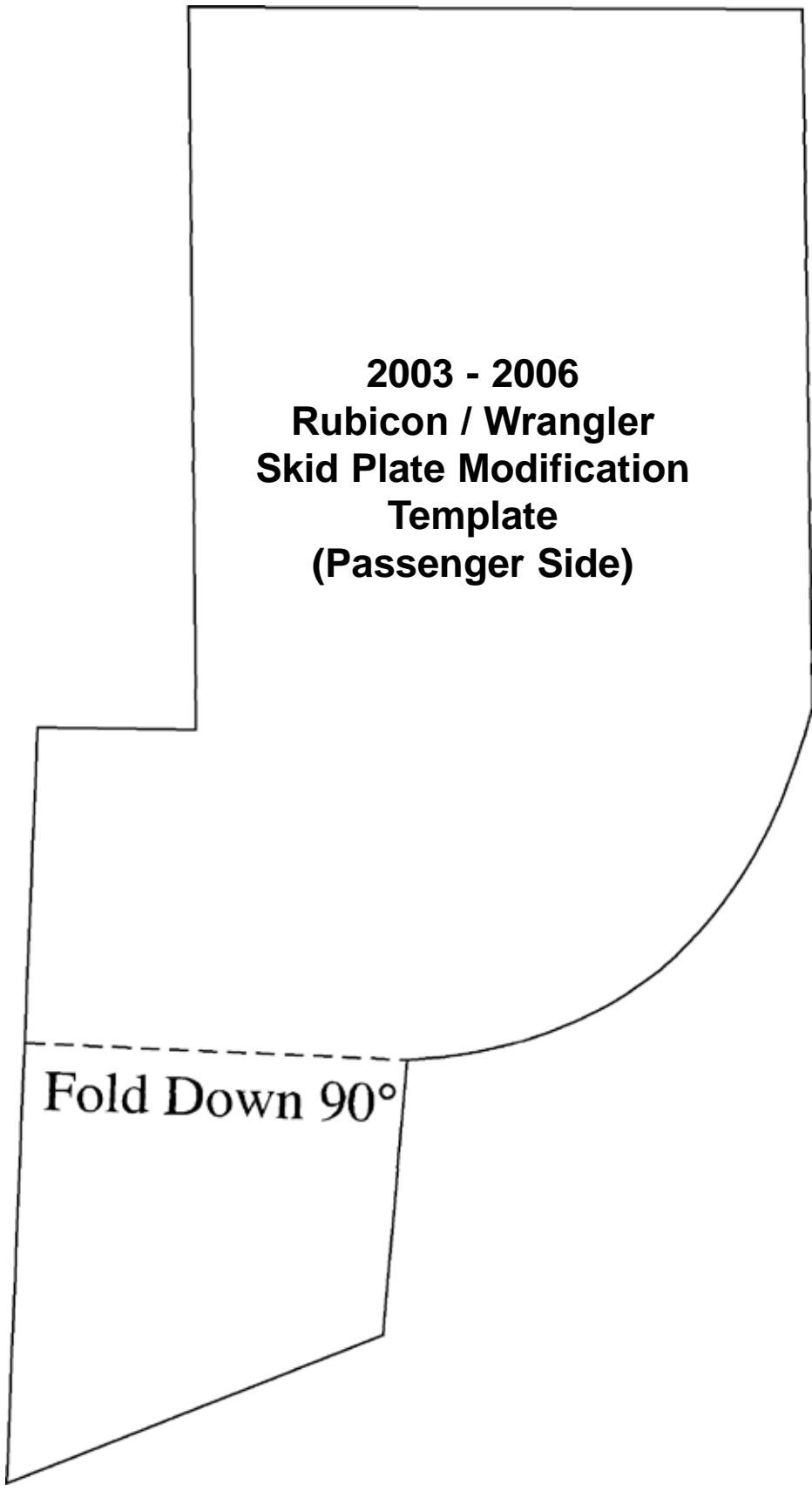


Photo #10



Photo #11





**2003 - 2006
Rubicon / Wrangler
Skid Plate Modification
Template
(Passenger Side)**

Fold Down 90°

FINAL NOTES:

- After the installation is complete, double check that all nuts & bolts are tight. Refer to the following chart again for the proper torque specifications. (Do not retighten the nuts & bolts where thread lock compound was used.)
- Retorque all the bolts after the first 100 miles.

Seat Belts Save Lives, Please Wear Your Seat Belt.

<u>TORQUE SPECIFICATIONS</u>					
<u>INCH SYSTEM</u>			<u>METRIC SYSTEM</u>		
Bolt Size	Grade 5	Grade 8	Bolt Size	Class 8.8	Class 10.9
5/16	15 FT LB	20 FT LB	6MM	5 FT LB	9 FT LB
3/8	30 FT LB	35 FT LB	8MM	18 FT LB	23 FT LB
7/16	45 FT LB	60 FT LB	10MM	32 FT LB	45 FT LB
1/2	65 FT LB	90 FT LB	12MM	55 FT LB	75 FT LB
9/16	95 FT LB	130 FTLB	14MM	85 FT LB	120 FT LB
5/8	135 FT LB	175 FT LB	16MM	130 FT LB	165 FT LB
3/4	185 FT LB	280 FT LB	18MM	170 FT LB	240 FT LB

- The above specifications are not to be used when the bolt is being installed with a bushing.

SKYJACKER® SUSPENSIONS

Skyjacker® 97-06 Jeep Accessories

- Steering Box Skid Plate Part # RRSP20



- Heavy-Duty Tie Rod Tube Part # TR300



- High Capacity Oil Pan
(97-02 Models w/ Automatic Transmission)
Part# OPA999



- Shifter Relocation Bracket
(Included in Rock Ready® Kits)
Regular TJ with NP231 Transfer Case
Part # JSRB231A
Unlimited, Rubicon & Rubicon Unlimited
Part # JSRB2315U



- Rear Shock Relocation
Brackets Part # TJRSB10



- Stainless Steel Brakelines 4"-10" Lift
Front Part # FBL44 Rear Part # RBL98



- Heavy-Duty Limiting Straps

LS16K 16"	LS28K 28"
LS20K 20"	LS32K 32"
LS24K 24"	



- Rock Ready® Grab Handles

RRGH20-K	2" Black
RRGH20-R	2" Red
RRGH30-K	3" Black
RRGH30-R	3" Red



- C.V. Yoke (Rubicon Models Only)
Part # CVR680



- High Clearance Transfer Case Skid Plate.
97-02 Models Part # SP28
03-06 Models Part # SP283



- Heavy-Duty Adjustable Rear Sway Bar
Part # RSBA410



Contact your distributor & get your Skyjacker® Jeep Accessories Today!!