



WWW.SMITTYBILT.COM

## Installation Instructions ATV Winch

Part # 97203,98203,97204,98204

Please read instructions entirely before installing this product.

Part	Qty	Part	Qty
Winch	1	Winch Plate	1
Hardware Bag	1	Hook	1
Hand Held Remote	1	Power Cord	1
Handle Bar Switch	1	Solenoid	1





[WWW.SMITTYBILT.COM](http://WWW.SMITTYBILT.COM)

## Installation Instructions ATV Winch

Part # 97203,98203,97204,98204

### Safety Warnings & Precautions



**As you read these instructions**, you will see WARNINGS, CAUTIONS, NOTICES and NOTES. Each message has a specific purpose. WARNINGS are safety messages that indicate a potentially hazardous situation, which, if not avoided could result in serious injury or death. CAUTIONS are safety messages that indicate a potentially hazardous situation which, if not avoided, could result in minor or moderate injury. A CAUTION may also be used to alert against unsafe practice. CAUTIONS and WARNINGS identify the hazard, indicate how to avoid the hazard, and advise of the probable consequence of not avoiding the hazard. NOTICES are messages to avoid property damage. NOTES are additional information to help you complete a procedure. **PLEASE WORK SAFELY!**



#### MOVING PARTS ENTANGLEMENTHAZARD

Failure to observe these instructions could lead to severe injury or death.

To avoid injury to hands or fingers:

- **Always** keep hands clear of rope, hook loop, hook and fairlead opening during installation, operation and when spooling in or out.
- **Always** use extreme caution when handling hook and rope during spooling operations.
- **Always** use supplied hook strap whenever spooling rope in or out, during installation, and during operation.
- **Always** keep vehicle in sight during winching operation.
- **Always** wear heavy leather gloves when handling rope.



[WWW.SMITTYBILT.COM](http://WWW.SMITTYBILT.COM)

## Installation Instructions ATV Winch

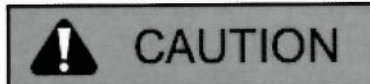
Part # 97203,98203,97204,98204



### CHEMICAL AND FIRE HAZARD

Failure to observe these instructions could lead to severe injury or death.

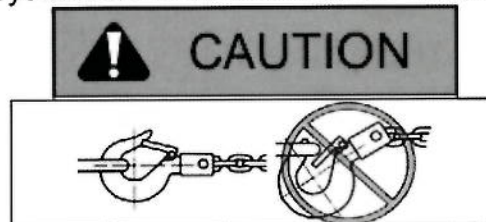
- **Always** remove jewelry and wear eye protection.
- **Never** lean over battery while making connections.
- **Always** verify area is clear of fuel lines, fuel tank, brake lines, electrical wires, etc. when drilling.
- **Never** route electrical cables:
  - Across any sharp edges.
  - Through or near moving parts.
  - Near parts that become hot.
- **Always** insulate and protect all exposed wiring and electrical terminals.
- **Always** install terminal boots as directed in installation instructions.



### MOVING PARTS ENTANGLEMENT HAZARD

Failure to observe these instructions could lead to minor or moderate injury.

- **Always** keep wired remote control lead clear of the drum, rope and rigging. Inspect for cracks, pinches, frayed wires or loose connections. Replace remote control if damaged.
- **Always** pass wired remote control through a window to avoid pinching lead in door, when using remote inside a vehicle.
- **Never** leave remote control where it can be activated during freespooling, rigging, or when the winch is not being used.
- **Always** require operator and bystanders to be aware of vehicle and or load.



### MOVING PARTS ENTANGLEMENT HAZARD

Failure to observe these instructions could lead to minor to moderate injury.

- **Always** use a hook with a latch

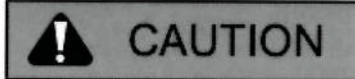


[WWW.SMITTYBILT.COM](http://WWW.SMITTYBILT.COM)

## Installation Instructions ATV Winch

Part # 97203,98203,97204,98204

- **Always** insure hook latch is closed and not supporting load.
- **Never** apply load to hook tip or latch. Apply load only to the center of hook.
- **Never** use a hook whose throat opening has increased, or whose tip is bent or twisted



### MOVING PARTS ENTANGLEMENT HAZARD

Failure to observe these instructions could lead to minor or moderate injury.

#### General Safety:

- **Always** know your winch. Take time to fully read the Installation Guide and the Basic Guide to Winching Techniques in order to understand your winch and its operation.
- **Never** operate this winch if you are under 16 years of age.
- **Never** operate this winch when under the influence of drugs, alcohol or medication.
- **Never** exceed winch or rope capacity listed on product data sheet. Double line using a snatch block to reduce winch load.

#### Installation Safety:

- **Always** choose a mounting location that is sufficiently strong to withstand the maximum pulling capacity of your winch.
- **Always** use factory approved mounting hardware, components, and accessories.
- **Always** use grade 5 (grade 8.8 metric) or better mounting hardware.
- **Never** weld mounting bolts.
- **Always** use care when using longer bolts than those supplied from factory. Bolts that are too long can damage the base and/or prevent the winch from being mounted securely.
- **Always** mount the winch and attach the hook to the rope's end loop before connecting the electrical wiring.
- **Always** position fairlead with WARNING label on top.
- **Always** spool the rope onto the drum in the direction specified by the winch warning label on the winch and/or documentation. This is required for the automatic brake (if so equipped) to function properly.
- **Always** prestretch wire rope and respool under load before use. Tightly wound wire rope reduces chances of "binding", which can damage the rope.



[WWW.SMITTYBILT.COM](http://WWW.SMITTYBILT.COM)

## Installation Instructions ATV Winch

Part # 97203,98203,97204,98204



### CAUTION

#### MOVING PARTS ENTANGLEMENT HAZARD

Failure to observe these instructions could lead to minor or moderate injury.

- **Always** inspect, rope, hook, and slings before operating winch. Frayed, kinked or damaged rope must be replaced immediately. Damaged components must be replaced before operation. Protect parts from damage.
- **Never** leave remote control plugged into winch when free spooling, rigging, or when the winch is not being used.
- **Never** hook rope back onto itself. This damages the rope.
- **Always** use a choker chain, choker rope, or tree trunk protector on the anchor.
- **Always** remove any element or obstacle that may interfere with safe operation of the winch.
- **Always** take time to use appropriate rigging techniques for a winch pull.
- **Always** be certain the anchor you select will withstand the load and the strap or chain will not slip.
- **Never** engage or disengage clutch if winch is under load, rope is in tension or drum is moving.
- **Always** select an anchor point as far away as possible. This will provide the winch with its greatest pulling power.
- **Never** winch with less than 5 wraps of rope around the drum. The rope could come loose from the drum.
- **Never** touch rope or hook while in tension or under load.
- **Never** touch rope or hook while someone else is at the control switch or during winching operation.
- **Always** stand clear of rope and load and keep others away while winching.
- **Always** be aware of stability of vehicle and load during winching, keep others away. Alert all bystanders of any unstable condition.
- **Never** use winch to secure a load.



WWW.SMITTYBILT.COM

## Installation Instructions ATV Winch

Part # 97203,98203,97204,98204



Failure to observe these instructions could lead to severe injury or death.

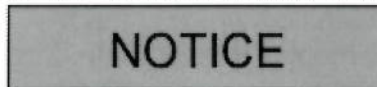
- **Never** use winch to lift or move persons.
- **Never** use winch as a hoist or to suspend a load.



Failure to observe these instructions could lead to minor or moderate injury.

To avoid injury to hands and fingers:

- **Always** wear heavy leather gloves when handling a rope.
- **Never** let rope slip through your hands.
- **Always** be aware of possible hot surface at winch motor, drum or rope during or after winch use



### AVOID WINCH AND EQUIPMENT DAMAGE

- **Always** avoid side pulls which can pile up rope at one end of the drum. This can damage rope or winch.
- **Always** ensure the clutch is fully engaged or disengaged.
- **Never** use winch to tow other vehicles or objects. Shock loads can momentarily exceed capacity of rope and winch.
- **Always** avoid “powering out” for extended distances. This causes excess heat and wear on the winch motor and brake.
- **Always** use care to not damage the vehicle frame when anchoring to a vehicle during a winching operation.
- **Never** “jog” rope under load. Shock loads can momentarily exceed capacity of rope and winch.
- **Never** use winch to secure a load during transport.
- **Never** submerge winch in water.

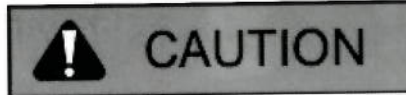


[WWW.SMITTYBILT.COM](http://WWW.SMITTYBILT.COM)

## Installation Instructions ATV Winch

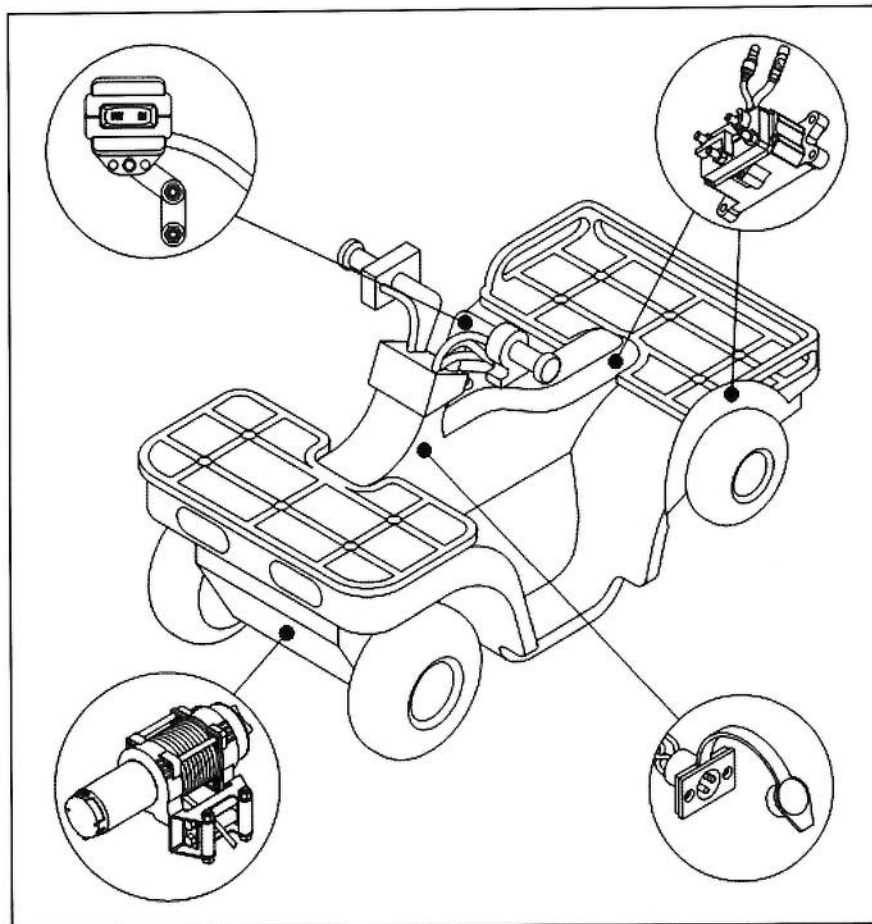
Part # 97203,98203,97204,98204

- **Always** store the remote control in a protected, clean, dry area.



To prevent accidental activation of the winch and serious injury, complete the winch installation and attach the hook before installing the wiring.

When installing your ATV winch system, read and follow all mounting and safety instructions. Always use caution when working with electricity and remember to verify that no exposed electrical connections exist before energizing your winch circuit. For specifications and performance data, refer to the specification sheet supplied with your winch.



To install the complete kit, you will need to mount the winch, contactor



[WWW.SMITTYBILT.COM](http://WWW.SMITTYBILT.COM)

## **Installation Instructions** ATV Winch

Part # 97203,98203,97204,98204

handlebar mounted Mini-rocker switch and remote socket (optional on some models).

### **Step 1 - Mount the winch**

To secure the winch, always use:

- A flat, secure mounting location at least 4.8 mm (3/16 in.) thick.
- Hex head cap screws with washers when using a one-piece winch mount plate.

**Note:** When using separate winch mount and fairlead plates use hex head caps crews on the motor side of the base as shown in Figure 4.

- Torque the mounting bolts to 16 N-m (12 lb-ft)
- Remove bottom tie bolt. This bolt should be retained for winch service.
- Attach the clevis hook to the wire rope.
- Put clutch in freespool position.
- Manually feed cable loop through fairlead.
- Attach hook to cable loop and re-engage clutch.

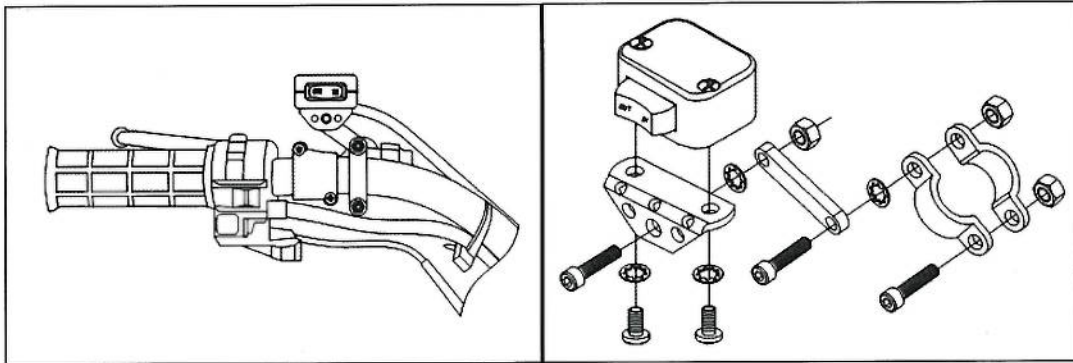




[WWW.SMITTYBILT.COM](http://WWW.SMITTYBILT.COM)

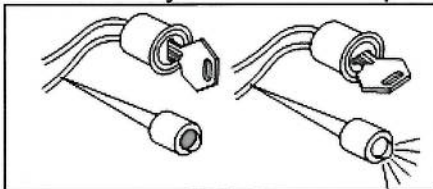
## Installation Instructions ATV Winch

Part # 97203,98203,97204,98204



Handlebar mount. Mini-rocker switch Assembly exact positioning may vary depending on ATV make and model.

- It is recommended that the switch be installed on the left handlebar. A piece of electrical tape around the handlebar will help prevent rotation of mount on the handle bar.
- Do NOT tighten over any hoses or cables.
- Once the handle bar switch is mounted, route the two bullet terminal wires back to where the contactor will be mounted. Splice the end of the red wire to a key controlled accessory circuit of the ATV (use the provided wire splice). Using a test light, locate a suitable wire from the ATV key switch. The wire should only have power when the key is in the "ON" position.



Use a test light to locate a suitable wire

### Step 4 - Mount the connector for remote



**WARNING**

**TO PREVENT SERIOUS INJURY OR DEATH FROM  
EXPLOSION:**

- Do NOT drill near or into gas tank.



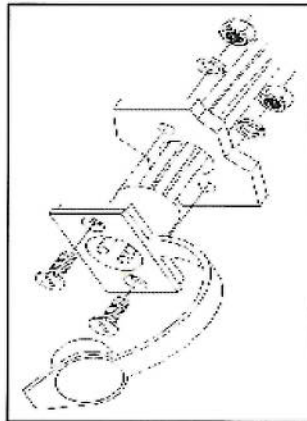
[WWW.SMITTYBILT.COM](http://WWW.SMITTYBILT.COM)

## Installation Instructions ATV Winch

Part # 97203,98203,97204,98204

- Verify the area is clear behind the mounting location before drilling.
- After determining the mounting location for the remote socket, drill three holes and install. (see figure 9)
- Once the remote socket is mounted, route the two bullet terminal wires back to where the contactor will be mounted. Splice the end of the red wire to a key controlled accessory circuit of the ATV (use the provided wire splice). Using a test light, locate a suitable wire from the ATV key switch. The wire should only have power when the key is in the "ON" position.

**NOTE: If installing both switches, both red wires MUST be spliced to a key controlled accessory circuit of the ATV as described above.**



Remote socket installation.

### Step 5 - Install the wiring

#### CAUTION

Place the supplied terminal boots on wires before securing to the contactor. All wires must be attached to the contactor before mounting the contactor to the ATV.

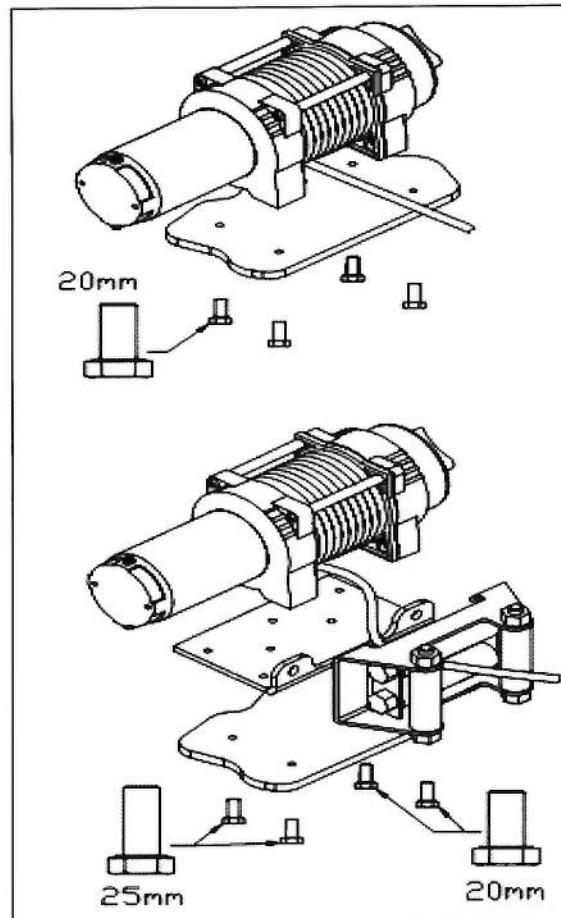
- Connect red cable one terminal (marked "M+") of contactor to terminal positive (+) of the motor.



WWW.SMITTYBILT.COM

## Installation Instructions ATV Winch

Part # 97203,98203,97204,98204



### Step 2 - Mount the contactor or control box

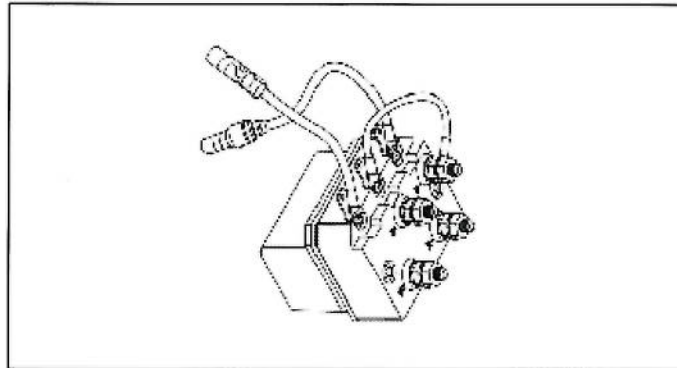
- The contactor is a primary safety feature in your winch system. It disconnects your winch from its power source when the ATV is not in use. The contactor must be correctly installed to work properly.
- It is recommended that the contactor be mounted close to the battery and in a location that is as clean and dry as possible. Exact location will vary, depending on the ATV. Usual locations include inside, on top, or on the side of rear storage box, and on a few models, under the seat.
- Ensure the contactor mounting location selected provides sufficient clearance from all metal structures such as frame tubes. Do NOT place tools or other items in a position that might come in contact with the contactor directly.
- Drill the mounting holes for the contactor at this time, then move on to step four as it will be easier to attach all the wiring to the contactor before attaching it to the ATV. Do NOT mount the contactor at this time.



[WWW.SMITTYBILT.COM](http://WWW.SMITTYBILT.COM)

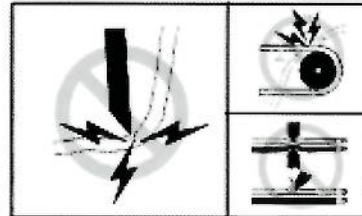
## Installation Instructions ATV Winch

Part # 97203,98203,97204,98204



### Step 3 - Mount the handlebar switch

**⚠ WARNING**



#### TO PREVENT SERIOUS INJURY OR DEATH FROM ELECTRICAL FIRE:

- Do NOT route electrical cables across sharp edges.
- Do NOT route electrical cables through or near moving parts.
- Do NOT route electrical cables through or near any high heat parts.
- Avoid pinch and wear/abrasion points when installing all electrical cables.

#### TO AVOID INJURY AND PROPERTY DAMAGE:

- Use caution when moving or repositioning any vehicle controls so as to not compromise the safe operation of the ATV. Select a mounting position that will provide clearance for all vehicle controls.
- Before securing the switch cable with tie wraps, make sure that the handlebars have full range of motion.

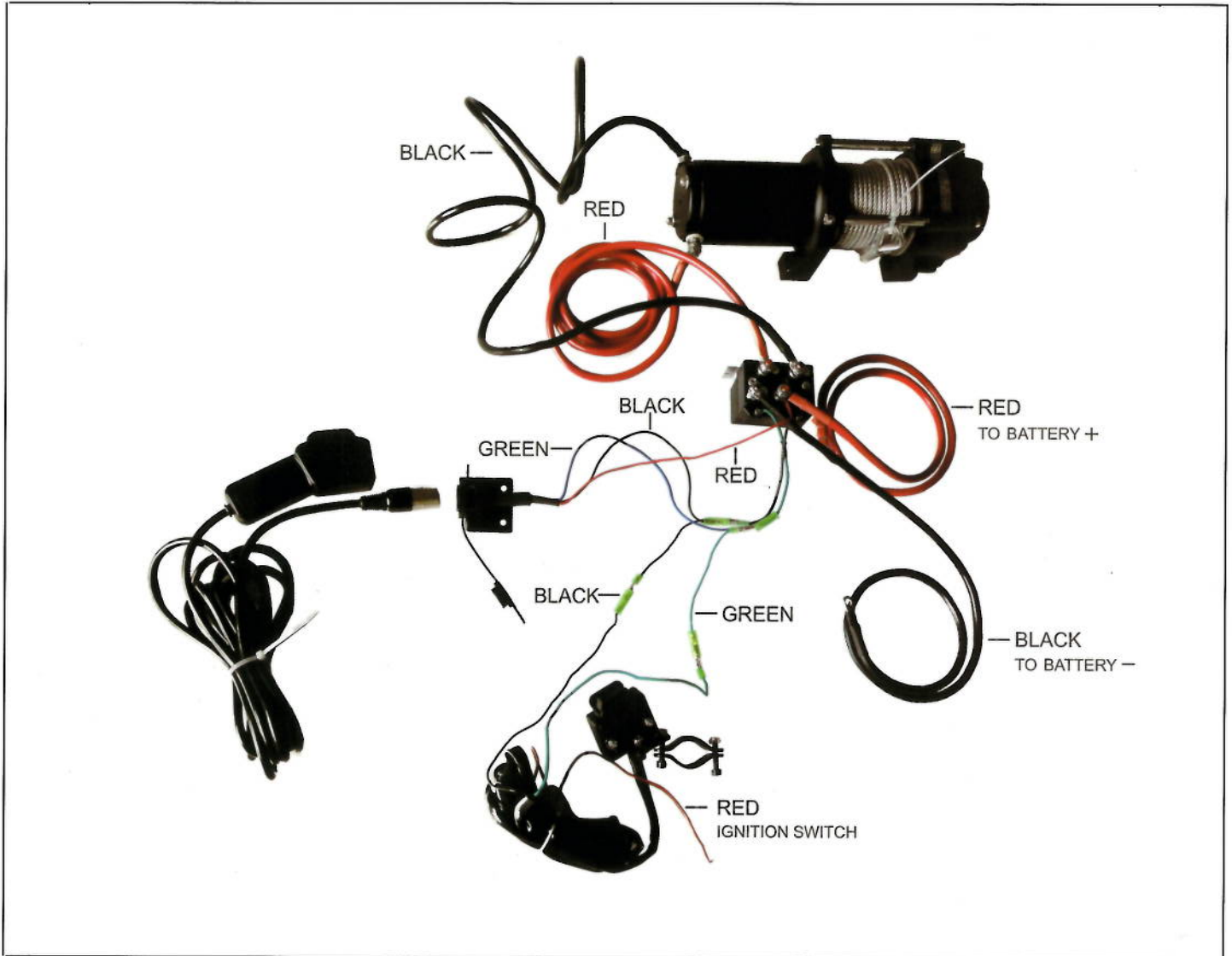


[WWW.SMITTYBILT.COM](http://WWW.SMITTYBILT.COM)

## Installation Instructions ATV Winch

Part # 97203,98203,97204,98204

- Connect black cable one terminal (marked "M-") of contactor to terminal negative (-) of the motor.
- Connect red cable one terminal (marked "B+") of contactor to terminal positive (+) of the battery.
- Connect black cable one terminal (marked "B-") of contactor to terminal negative (-) of the battery.
- If installing both the handle bar switch and the remote socket, first attach the terminals on the green and black remote socket wires into the contactor (green to green, black to black), or connect the red cable of remote socket to the terminal (marked "B+") of the contactor.



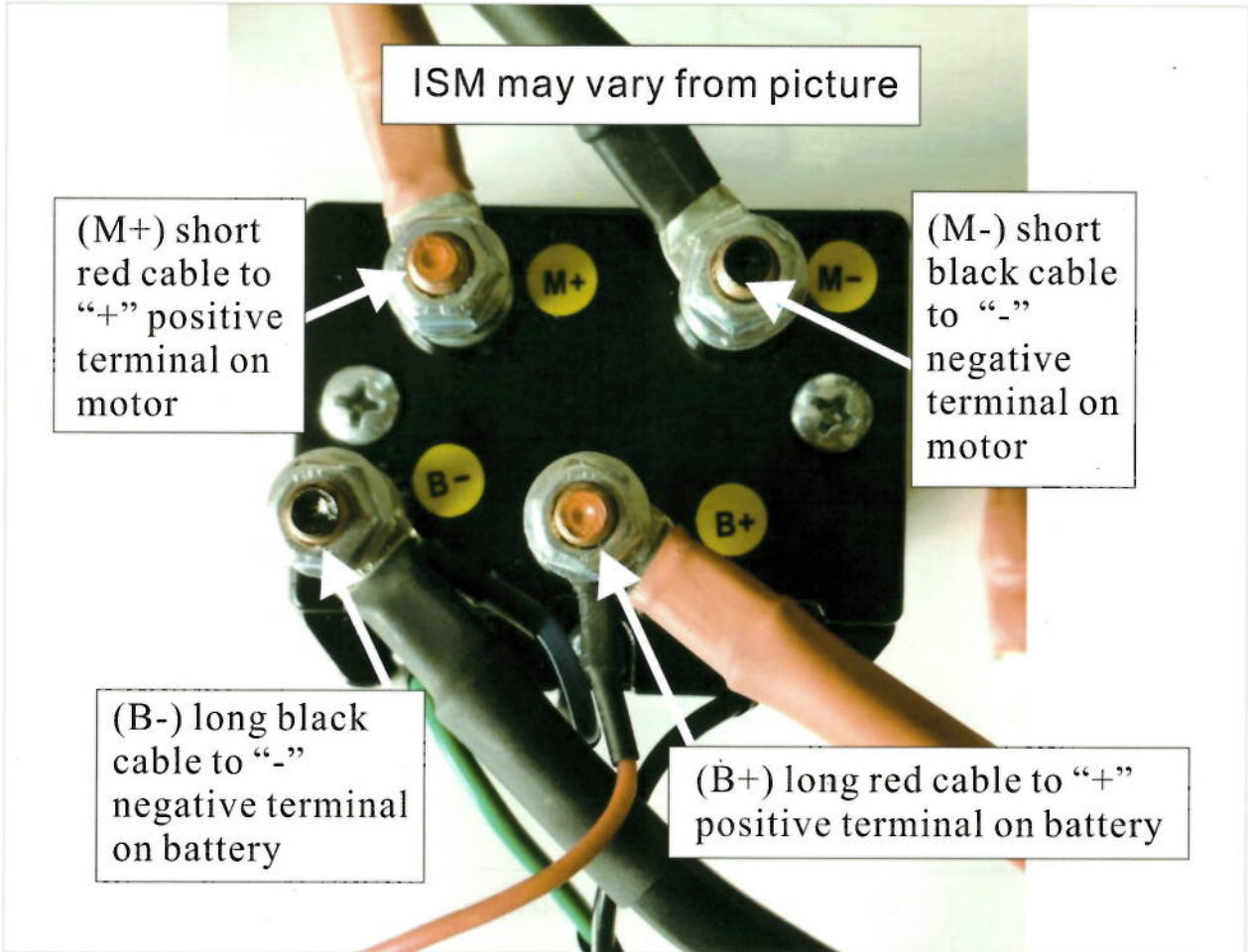
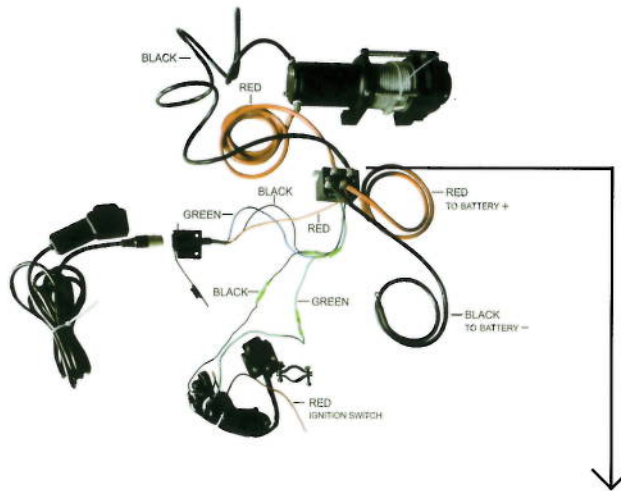
Wiring Installation diagram



WWW.SMITTYBILT.COM

# Installation Instructions ATV Winch

Part # 97203,98203,97204,98204



For Technical Support / Warranty Information Please Call 310-762-9944  
Smittybilt, 400 West Artesia Blvd, Compton, CA90220



[WWW.SMITTYBILT.COM](http://WWW.SMITTYBILT.COM)

**Installation Instructions**  
**ATV Winch**

Part # 97203,98203,97204,98204

**⚠ CAUTION**

- **Always** remove jewelry and wear eye protection.
- **Never** lean over battery while making connections.
- **Always** verify area is clear of fuel lines, fuel tank, brake lines, electrical wires, etc. when drilling.
- **Never** route electrical cables:
  - Across any sharp edges.
  - Through or near moving parts.
  - Near parts that become hot.
- **Always** insulate and protect all exposed wiring and electrical terminals.
- **Always** install terminal boots as directed in installation instructions.

**Step 6 - Check the system**

Before using the winch, verify the following:

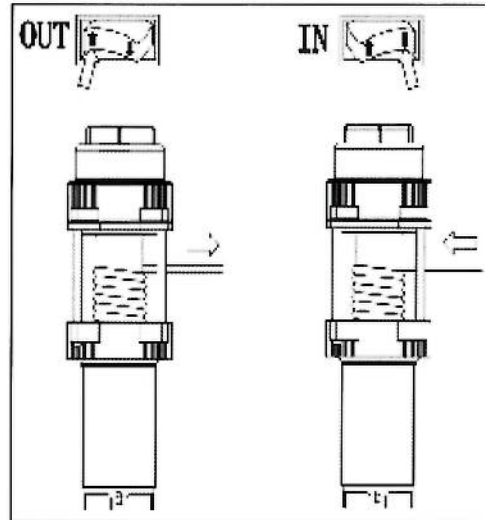
- Wiring to all components are correct. All loose wires are tight.
- There are no exposed wiring or terminals. Cover any existing terminal exposures with terminal boots, heat shrink tubing or electricians tape.
- Turn ATV key switch to ON position. Check winch for proper operation. The wire rope should spool in and out in the direction indicated on the switch.



[WWW.SMITTYBILT.COM](http://WWW.SMITTYBILT.COM)

## Installation Instructions ATV Winch

Part # 97203,98203,97204,98204



## Winch Maintenance

No further internal lubrication is required for the life of the winch. The winch should not be emerges in water (waterproof winch should not be soaked in water for a long time). If the winch immersions in water by accident, you should loosen the screws, tilt the winch to drain out the water as soon as possible. You should not use the winch within (3) three days. After three days, turn on the winch and keep the motor running until hands can feel it hot on the motor to vaporize any water in the motor.

Lubricate the cable periodically. Replace a new cable as soon as possible if glitch, fracture, and/or crease were to occur.

You should clean and lubricate after use; always store the winch in a dry place, disengage the clutch, and out of reach for children.

Check each assembly or connection screw; if loosen or corrode, please repair and replace before use.

Winch is not submersible. Do not use winch if submersed in water. Winch needs to be opened up to drain water out completely and cleaned before using again.





[WWW.SMITTYBILT.COM](http://WWW.SMITTYBILT.COM)

## Installation Instructions ATV Winch

Part # 97203,98203,97204,98204

### Troubleshooting

NO.	Symptom	Possible Cause	Suggested solution
1	Motor does not turn on	<ul style="list-style-type: none"> <li>- Switch Assembly not connected properly</li> <li>- Loose battery cable Connections</li> <li>- Solenoid malfunctioning</li> <li>- Defective Switch Assembly</li> <li>- Defective motor</li> <li>- Water has entered motor</li> </ul>	<ul style="list-style-type: none"> <li>- Insert Switch Assembly all the way into the connector.</li> <li>- Tighten nuts on all cable connections.</li> <li>- Tap solenoid to loosen contacts. Apply 12volts to coil terminals directly. A clicking indicates proper activation.</li> <li>- Replace Switch Assembly</li> <li>- Check for voltage at armature port with Switch pressed. If voltage is present replace motor.</li> <li>- Allow to drain and dry. Run in short bursts without load until completely dry.</li> </ul>
2	Motor runs but cable drum does not turn	<ul style="list-style-type: none"> <li>- Cam Ring (clutch) not engaged</li> </ul>	<ul style="list-style-type: none"> <li>-Move Cam Ring to the "in" position. If problem persists, a qualified technician needs to check and repair.</li> </ul>
3	Motor runs slowly or without normal power	<ul style="list-style-type: none"> <li>- Insufficient current or voltage</li> </ul>	<ul style="list-style-type: none"> <li>- Battery weak, recharge. Run winch with vehicle motor running.</li> <li>- Loose or corroded battery cable connections. Clean, tighten, or replace.</li> </ul>
4	Motor runs too hot	<ul style="list-style-type: none"> <li>- Long period of operation</li> </ul>	<ul style="list-style-type: none"> <li>- Let winch cool down periodically</li> </ul>
5	Winch runs in one direction only	<ul style="list-style-type: none"> <li>- Defective or stuck solenoid</li> <li>- Defective Switch Assembly</li> </ul>	<ul style="list-style-type: none"> <li>- Tap solenoid to loosen contacts.</li> <li>- Repair or replace solenoid.</li> <li>- Replace Switch Assembly.</li> </ul>



[WWW.SMITTYBILT.COM](http://WWW.SMITTYBILT.COM)

**Installation Instructions**  
**ATV Winch**

Part # 97203,98203,97204,98204

## Specifications

### 97203 - XRC 3.0 (3,000lb) Winch

Rated line pull: 3,000lbs (1,360kgs) single line  
 Motor: Permanent magnetic DC 12V  
 Input 3.9hp/2.9kw and output 1.0ph/1.0kw  
 Gear train: 3-stage planetary  
 Gear ratio: 171:1  
 Wire rope: 4.8mm x 15.2m  
 Drum size: 38mm x 80mm  
 Dimensions: 312mm x 102.5mm x 110.5mm  
 Bolt pattern: 124mm x 76mm  
 Gross weight: 22lbs

#### Line speed and motor current (first layer)

Line pull	LBS	0	1,000	2,000	3,000
	KGS	0	453	907	1,360
Line speed	FPM	22.9	13.4	7.5	4.9
	MPM	7	4.1	2.3	1.5
Motor current	Amps	21	75	155	205

#### Line pull and cable capacity

Layer of cable		1	2	3	4	5
Rated line pull per layer	LBS	3,000	2,561	2,234	1,981	1,779
	KGS	1,360	1,1162	1,013	899	807
Cable capacity per layer	Ft.	7.5	19.03	31.5	43.96	49.86
	M	2.3	5.8	9.6	13.4	15.2



[WWW.SMITTYBILT.COM](http://WWW.SMITTYBILT.COM)

**Installation Instructions**  
**ATV Winch**

Part # 97203,98203,97204,98204

**97204 - XRC 4.0 (4,000lb) Winch**

Rated line pull: 4,000lbs (1,816kgs) single line  
 Motor: Permanent magnetic DC 12V  
 Input 4.1hp/3.1kw and output 1.6ph/1.2kw  
 Gear train: 3-stage planetary  
 Gear ratio: 166:1  
 Wire rope: 5.4mm x 15.2m  
 Drum size: 50mm x 76.5mm  
 Dimensions: 334mm x 117mm x 115.5mm  
 Bolt pattern: 124mm x 76mm  
 Net weight: 28lbs

Line speed and motor current (first layer)

Line pull	LBS	0	1,000	2,000	3,000	4,000
	KGS	0	454	907	1,360	1,816
Line speed	FPM	23.75	16.89	12.79	8.95	5.87
	MPM	7.24	5.15	3.9	2.73	1.79
Motor current	Amps	22	75	120	160	250

Line pull and cable capacity

Layer of cable		1	2	3	4	5
Rated line pull per layer	LBS	4,000	2,988	2606	2311	2076
	KGS	1,818	1,358	1,185	1,050	944
Cable capacity per layer	Ft.	7.8	17.3	27.8	41	49.86
	M	2.4	5.3	8.5	12.5	15.2

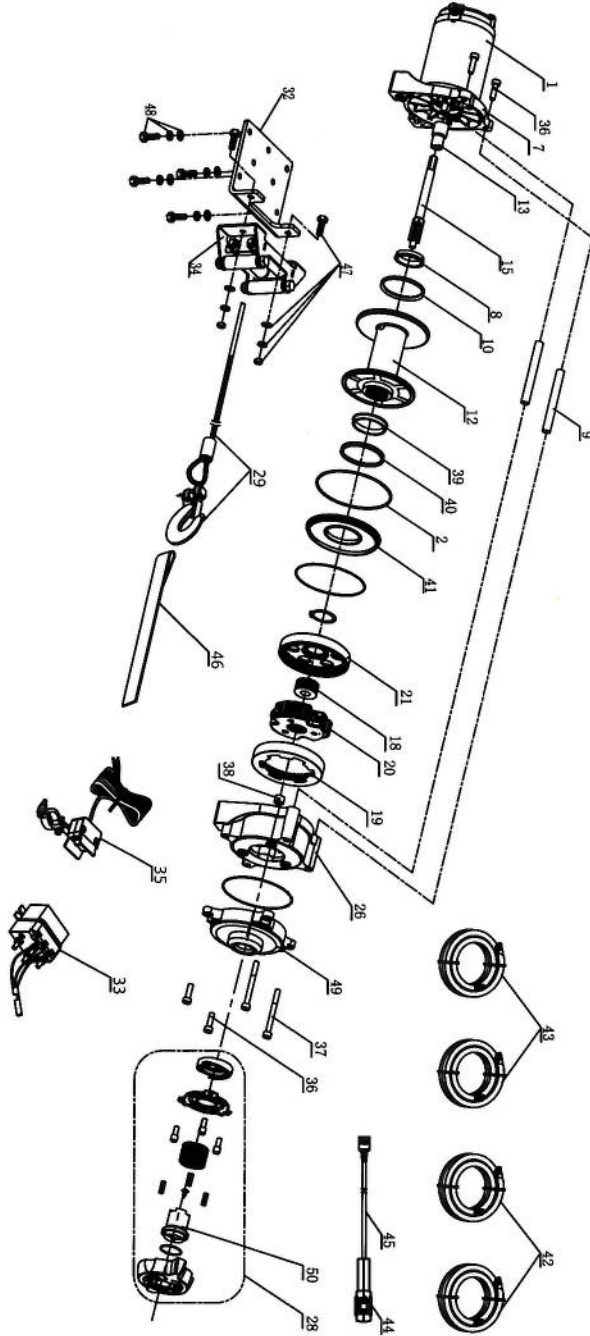


WWW.SMITTYBILT.COM

# Installation Instructions ATV Winch

Part # 97203,98203,97204,98204

## Part # 97203,98203



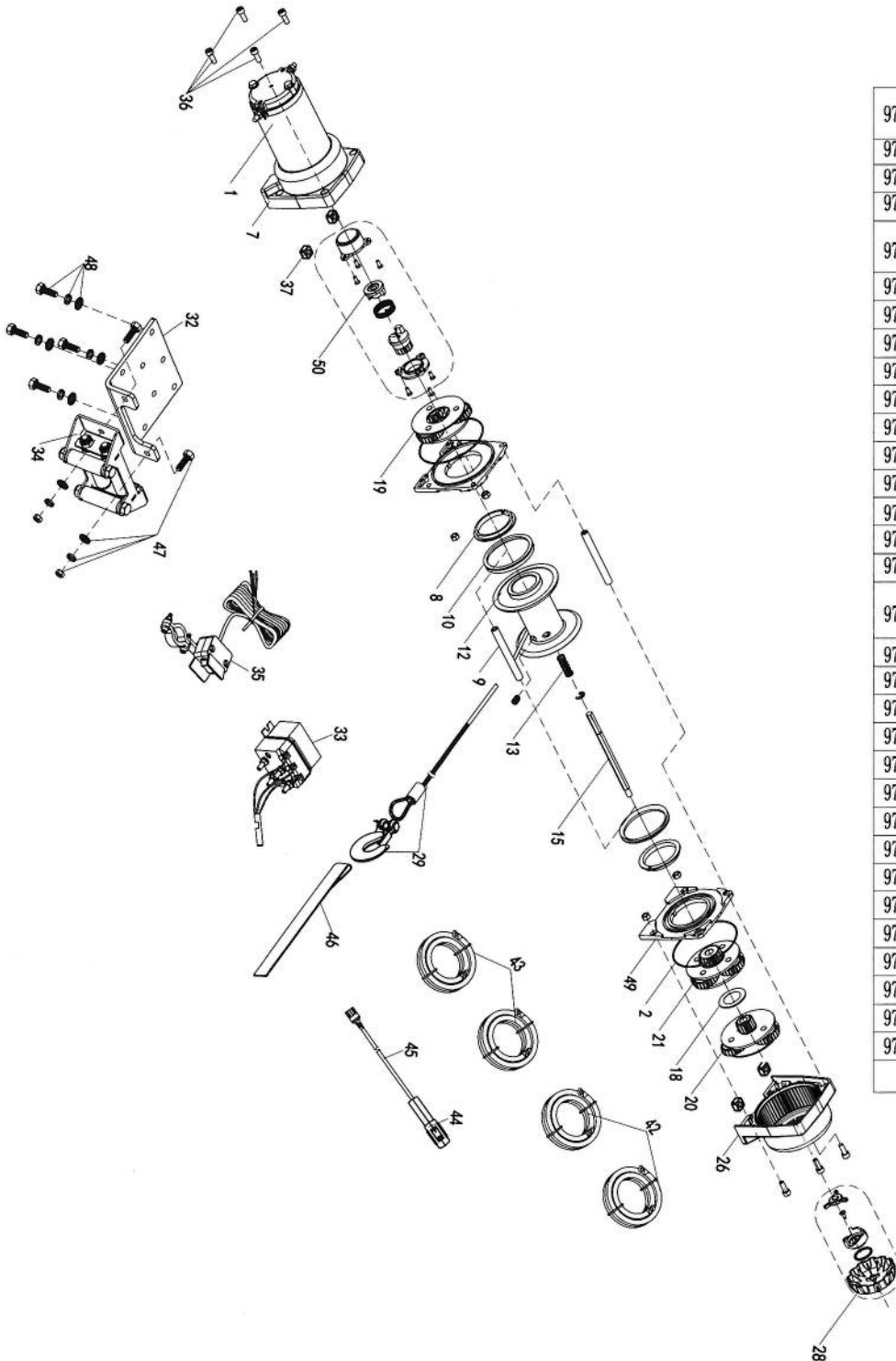
97203-55B	Completely Gear box with Knob Assy	1
97203-50B	Brake Assy	1
97203-49B	Gear box end cap	1
97203-48B	Mounting plate hardware	1
97203-47B	Roller fairlead mounting hardware	1
97203-46B	Smittybilt lanyard	1
97203-45B	Remote wire	1
97203-44B	Remote	1
97203-43B	Battery lead cabel (Red)	2
97203-42B	Powder lead cabel (black)	2
97203-41B	Gear box cap	1
97203-40B	Seal (Gear side )	1
97203-39B	Sliding bearing (Gear side)	1
97203-38B	Oil bearing	1
97203-37B	Socket head bolt M6 X 60	2
97203-36B	Socket head bolt M6 X 20	4
97203-35B	Mini Rock switch	1
97203-34B	Roller fairlead	1
97203-33B	Solenoid	1
97203-32B	Mounting plate	1
97203-29B	Ø4.8mm Wire rope with 1/4 hook	1
97203-28B	Clutch knob Assy with Brake Assy	1
97203-26B	Gear box	1
97203-21B	Ring gear	1
97203-20B	planet gear	1
97203-19B	Locating ring gear	1
97203-18B	Spline gear	1
97203-15B	Shaft	1
97203-13B	Coupling joint	1
97203-12B	Drum	1
97203-10B	Seal (Motor side)	1
97203-09B	Tie bar	2
97203-08B	Sliding bearing(Motor side)	1
97203-07B	Motor base	1
97203-02B	Clip	1
97203-01B	Motor Assy	1
PN	Description	QTY



WWW.SMITTYBILT.COM

# Installation Instructions ATV Winch

Part # 97203,98203,97204,98204



Part # 97204,98204

PN	Description	QTY
97204-55B	Completely Gear box with Knob Assy	1
97204-50B	Brake Assy	1
97204-49B	Gear box bracket	2
97204-48B	Mounting plate hardware	1
97204-47B	Roller fairlead mounting hardware	1
97203-46B	Smittybilt lanyard	1
97203-45B	Remote wire	1
97203-44B	Remote	1
97204-43B	Battery lead cabel (Red)	2
97204-42B	Powder lead cabel (black)	2
97204-37B	Square nut	4
97204-36B	Motor assy mounting hardware	2
97203-35B	Mini Rock switch	1
97204-34B	Roller fairlead	1
97203-33B	Solenoid	1
97204-32B	Mounting plate	1
97204-29B	Ø 5.1mm Wire rope with 1/4 hook	1
97204-28B	Clutch knob Assy	1
97204-26B	Gear box	1
97204-21B	3rd stage planetary gear	1
97204-20B	2nd stage planetary gear	1
97204-19B	1st stage planetary gear	1
97204-18B	Spacer	1
97204-15B	Shaft	1
97204-13B	Spring	1
97204-12B	Drum	1
97204-10B	Seal	2
97204-09B	Tie bar	2
97204-08B	Sliding bearing	2
97204-07B	Motor base	1
97204-02B	Oring	2
97204-01B	Motor Assy	1
PN	Description	QTY



WWW.SMITTYBILT.COM

**Installation Instructions**  
**ATV Winch**

Part # 97203,98203,97204,98204

**ATV winch spare parts list**

**Part # 97203,98203**

Part Number	Description
97203-01B	Locating Ring Gear
97203-02B	Palnet Gear
97203-03B	Spline Gear
97203-05B	Ring Gear
97203-08B	Drum Assy
97203-11B	Coupling Joint
97203-15B	Long bolt
97203-19B	Tie Bar'
97203-20B	Motor Base
97203-25B	Gear box base
97203-32B	Gear box Cover
97203-36B	Oil Bearing
97203-37B	Clutch Handle assy
97203-41B	Wire rope with fix bolt
97203-43B	Winch Mounting Hardware
97203-46B	Hook
97203-47B	Roller Fairlead
97203-48B	Roller fairlead mounting hardware
97203-50B	Rocker Switch
97203-52B	Solenoid
97203-57B	Motor Assy
97203-62B	Drive Shaft
97203-67B	Seal
97203-72B	Battery Cable
97203-76B	Smittybilt Lanyard
97203-33B	Power lead wires (Solenoid)

**Part # 97204,98204**

Part Number	Description
97204-02B	1st Stage Planetary Gear
97204-03B	2nd Stage Planetary Gear
97204-05B	3rd Stage Planetary Gear
97204-08B	Drum Assy
97204-10B	Complete brake assy
97204-15B	Screws
97204-21B	Nylon Bearing
97204-22B	Tie Bar
97204-25B	Gear box base
97204-32B	Gear Box Cover
97204-36B	O-Ring
97204-37B	Clutch Handle assy
97204-40B	Clutch Base
97204-41B	Wire rope with fix bolt
97204-43B	Winch Mounting Hardware
97204-46B	Hook
97204-47B	Roller fairlead
97204-48B	Roller Fairlead Mounting Hardware
97204-50B	Rocker Switch
97204-52B	Solenoid
97204-55B	Complete Gear box assy
97204-57B	Complete motor assy.
97204-62B	Drive Shaft
97204-64B	Screws
97204-67B	Seal
97204-76B	Winch mounting plate
97204-72B	Battery Cable
97204-33B	Power lead wires (Solenoid)
97204-20B	Motor base



[WWW.SMITTYBILT.COM](http://WWW.SMITTYBILT.COM)

## **Installation Instructions ATV Winch**

Part # 97203,98203,97204,98204

### Warranty

Smittybilt, Inc. offers a limited lifetime warranty (to the original retail purchaser) for each new Smittybilt consumer/RV electric winch against manufacturing defects in workmanship and materials on all the mechanical components

Electrical components consisting of motors, solenoids, wiring, wire connectors and associated parts have a limited two (2) year warranty.

New cable assemblies are warranted against defects in workmanship and materials when received by the retail purchaser, there is no applicable warranty after initial use.

Warranty registration cards for each winch must be submitted at the time of purchase or within 30 days by the end user. Warranty will only be valid for the original purchaser of the winch and installed on the vehicle for which it was originally registered.

Smittybilt electric winches are intended for recreational self-recovery usage. The warranty is void if the winch is used in commercial/industrial applications.

The obligation under this warranty, statutory or otherwise, is limited to the replacement or repair at the manufacturer's factory, or at a point designated by the manufacturers, of such part(s) as shall appear to the manufacturer, upon inspection of such part(s), to have been defective in material or workmanship. This warranty does not obligate Smittybilt, Inc. to bear the cost of labor or transportation charges in connection with the replacement or repair of defective parts, nor shall it apply to a product upon which repairs or alterations have been made, unless authorized by the manufacturer, or for equipment misused, neglected or improperly installed.

#### IMPORTANT NOTICE

To the fullest extent permitted by applicable law, the following are hereby excluded and disclaimed:

- 1) All warranties of fitness for a particular purpose.
- 2) All warranties of Merchantability.
- 3) All claims for consequential or incidental damages.

There are no warranties that extend beyond the description that appears on the face hereof.

Some states do not allow the above exclusions or disclaimers in consumer transactions and as such this disclaimer /exclusion may not apply to you.

To the extent such warranties of fitness or merchantability are deemed to apply to this product, they exist for only so long as the express limited warranty elsewhere set forth is in existence.

Smittybilt, Inc. reserves the right to change, alter or improve its products in design, materials or appearance without incurring any obligation to incorporate such changes in products that were previously manufactured.

This warranty gives you specific legal rights and you may have other legal rights, which vary from state to state to submit a warranty claim contact.



[WWW.SMITTYBILT.COM](http://WWW.SMITTYBILT.COM)

**Installation Instructions**  
**ATV Winch**

Part # 97203,98203,97204,98204

**Warranty Information Card**

**Smittybilt**  
**400 West Artesia Blvd.**  
**Compton, CA 90220**  
**1-888-717-5797**

First name:

Last name:

Age:

Sex:

City/Province

Zip/Postal Code:

Country:

Telephone Number:

Email Address:

Which Smittybilt winch did you purchase?

Model Number:

Date of Purchase:

Where did you purchase this product?

Store or catalog name:

Store Location:

How satisfied were you with the dealer and /or sales staff?

Who installed or will install your Smittybilt product?

Is this the first time you have purchase a winch?

If no, what brand have you brought before?

What type of vehicle will this Smittybilt winch be installed on?

Year:

Make:

Model:

2WD

4WD

What is the vehicles main use?

What other accessories have you purchased/installed for your vehicle?





**IF YOU'RE MISSING  
HARDWARE OR  
COMPONENTS OR IN  
NEED OF TECHNICAL  
ASSISTANCE CONTACT  
SMITTYBILT  
DIRECTLY AT**

**1-800-776-0767**

**[info@smittybilt.com](mailto:info@smittybilt.com)**

