

SPECTRE®

Performance

Intake Installation Instructions P/N 9067 (red filter)

Year/Make/Model/Engine

2015-17 Mitsubishi Lancer 2.0L, 2.4L

NOT LEGAL FOR SALE OR USE ON ANY POLLUTION CONTROLLED MOTOR VEHICLE IN CALIFORNIA OR STATES ADOPTING CALIFORNIA EMISSION PROCEDURES.

See Spectreperformance.com for CARB status on each part for a specific vehicle



Parts List

- 1- Intake tube
- 1- Heat shield
- 1- Air filter
- 1- 3"-2.75" Coupler
- 1- MAFS Sleeve
- 1- 26" Edge Trim
- 1- 13" Edge trim
- 1- 9" Edge Trim
- 1- #48 Hose Clamp
- 1- #40 Hose clamp
- 2- #8 Hose Clamps
- 2- M4 Screws
- 3- M6 Bolts
- 4- M6 Flat Washers
- 2- M6 Split Lock Washers
- 1- 6MM Nylock Nut
- 2- 7/16" Grommets
- 1- Bracket
- 1- Aluminum Spacer
- 1- 1/2" Hose

Tools Required:

- T20 torx
- Phillips screwdriver
- Ratchet
- Extension
- 2.5mm allen
- Pliers
- 10mm wrench
- 10mm socket
- Flat blade screwdriver

For filter reorders ask at the special order counter of your local parts store or call:

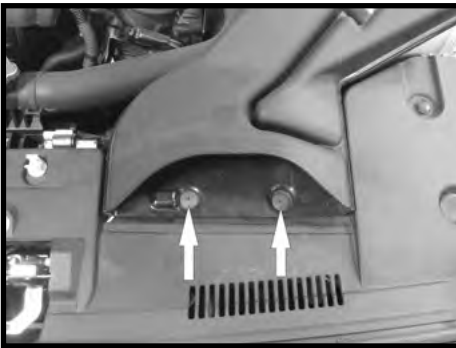
1-909-673-9800

ask for: P/N HPR9132 (red filter)
P/N HPR9136 (blue filter)
P/N HPR9131 (black filter)



Step 1

Safety first! Before you begin the installation, make sure that the vehicle is in park (or neutral for a manual transmission) with the parking brake set. Disconnect the negative battery terminal and verify that all components that are listed are present. Note: This kit was designed and tested on a stock engine without any custom tuning done to the engine computer. Removing the battery cable may erase the programmed radio stations. The anti-theft code will need to be entered into some radios after the battery cable is connected. The anti-theft code can typically be found in the owner's manual or at your local dealership.



Step 2

Remove the 2 fasteners securing the fresh air intake scoop. Then remove the fresh air intake scoop from the vehicle by pulling it out of the factory air box.



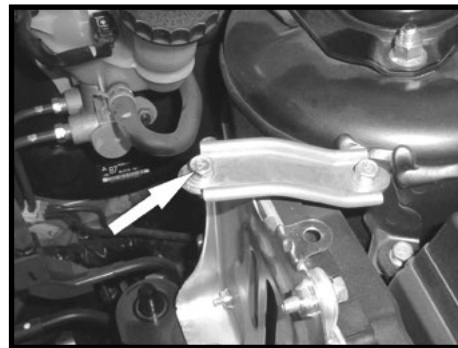
Step 3

Disconnect the MAFS (Mass Air Flow Sensor) electrical connector and release the wiring harness from the clip attached to the air box. Release the clamp securing the crank case vent tube to the valve cover and disconnect the hose. Loosen the clamp securing the intake tube to the throttle body. Remove the bolt securing the air box to the vehicle.



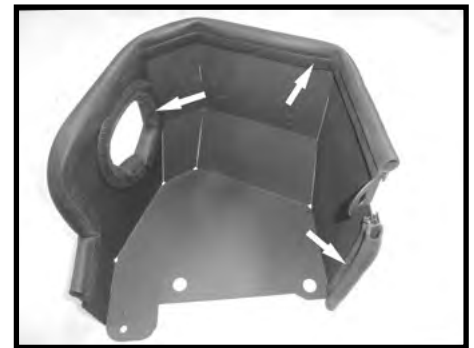
Step 4

Remove the air box assembly from the vehicle by pulling up on the air box to release it from the mounting grommets and the throttle body.



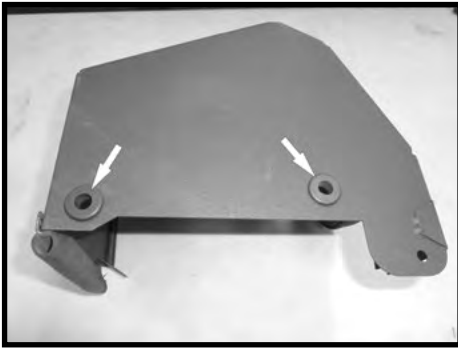
Step 5

Remove the bolt securing the ECU to the mounting bracket.

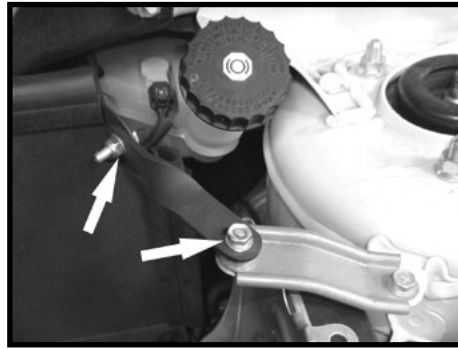


Step 6

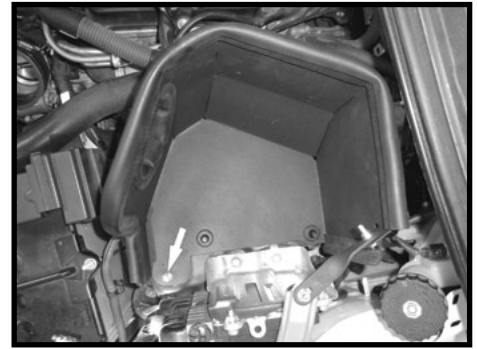
Install the 13" long piece of edge into the hole of the heat shield. Then install the 26" and 13" of edge trim along the outside edge of the heat shield as shown.



Step 7
Install the 2 grommets into the holes in the heat shield as shown. Then install the bracket onto the heat shield using the provided hardware.



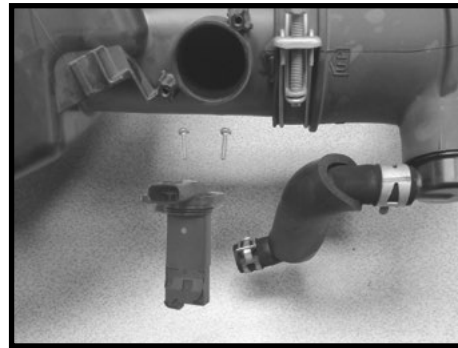
Step 8
Install the heat shield assembly into the vehicle making sure the 2 grommets installed in the heat shield secure tightly onto the factory air box mounts. Then using the supplied spacer and hardware secure the heat shield to the ECU mounting bracket.



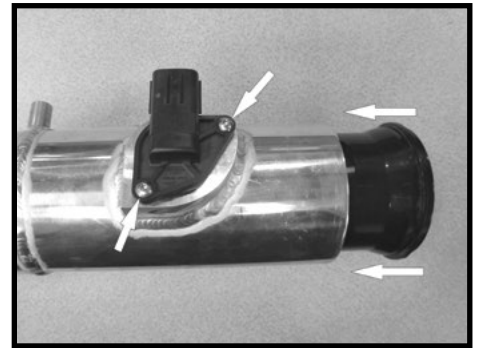
Step 9
Secure the front of the heat shield to the front air box mount using the provided hardware.



Step 10
Install the provided reducer coupler onto the throttle body and secure with the provided clamp. Install the second clamp onto the reducer coupler but leave it loose for now.



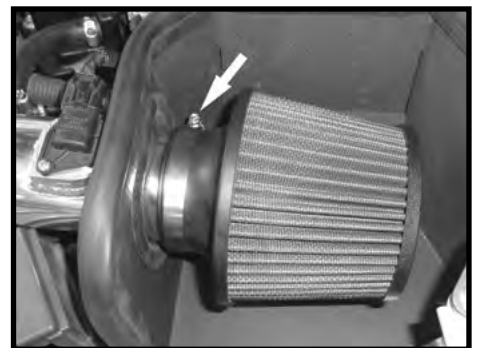
Step 11
Remove the 2 screws securing the MAFS to the stock air box and remove the sensor.



Step 12
Install the MAFS into the Spectre intake tube and secure with the provided hardware. Then install the MAF Sleeve into intake tube. Note: The MAFS sleeve must be used or the vehicle will not run properly.



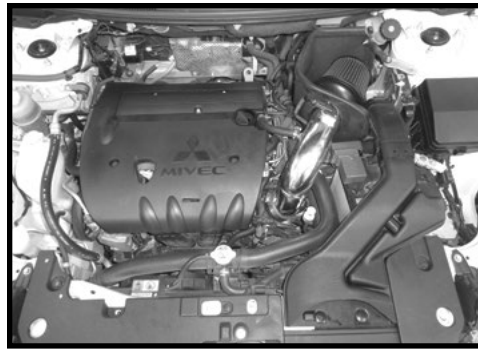
Step 13
Install the intake tube into the hole in the heat shield then into the reducer coupler in the throttle body. Then secure the intake tube by tightening the hose clamp. Reconnect the MAFS electrical connector. Then connect the crank case vent to the nipple on the intake tube using the provided 1/2" hose. Secure with the provided hose clamps.



Step 14
Install the air filter onto the intake tube and secure with the provided hose clamp.



Step 15
Reinstall the fresh air intake scoop and secure with the factory fasteners.



Step 16
Make sure that all clamps and hardware are fully tightened. Reconnect the battery cable, start the vehicle and let it warm up. Shut off and inspect the installation once more for any loose clamps, wires, or hardware. Test drive & enjoy! Your installation is now complete. Periodically check all clamps and brackets.

If you need any assistance please call 1-800-858-3333 to speak with a representative in our Customer Service Center before returning the product.

WARNING This product can expose you to a chemical or chemicals known to the State of California to cause cancer and birth defects or other reproductive harm.

NOT LEGAL FOR SALE OR USE ON ANY POLLUTION CONTROLLED MOTOR VEHICLE IN CALIFORNIA OR STATES ADOPTING CALIFORNIA EMISSION PROCEDURES.
See Spectreperformance.com for CARB status on each part for a specific vehicle

SPECTRE
Performance

(909) 673-9800

www.spectreperformance.com

© 2020 SPECTRE PERFORMANCE Made in China

176280
2/5/20