

SPECTRE®

Performance

Intake Installation Instructions

P/N 9977 (red filter) - P/N 9977B (blue filter)
P/N 9977K (black filter)

Year/Make/Model/Engine

2010-2014 Ford Raptor 6.2L
2011 Ford F150 Platinum 6.2L

PARTS FOR VEHICLES LISTED ARE 50 STATE LEGAL.
SEE SPECTREPERFORMANCE.COM FOR CARB
STATUS ON EACH PART FOR A SPECIFIC VEHICLE.



Parts List

- 1- Heat shield, Large
- 1-Heat Shield, Small
- 1- Air filter
- 1- Intake tube
- 1- 4" Flex coupler
- 1- 4" Coupler
- 4- 4" Wide Hose clamps
- 2- M4 Machine screws
- 1- Rubber seal
- 1- 20° Velocity stack adapter
- 1-MAFS adapter sleeve
- 1- 6" Clamp
- 4- M5 Locknuts
- 4- 5MM Washers
- 4- M5 Allen Bolts
- 1- Allen Key
- 1- C.A.R.B. Sticker

Tools Required:

- 5/16" or 8mm nut driver
- T-20 Torx bit

For filter reorders ask at the
special order counter of your
local parts store or call:

1-909-673-9800

ask for: P/N HPR9892 (red filter)
P/N HPR9892B (blue filter)
P/N HPR9892K (black filter)



Step 1

Safety first! Before you begin the installation, make sure that the vehicle is in park (or neutral for a manual transmission) with the parking brake set. Disconnect the negative battery terminal and verify that all components that are listed are present. Note: This kit was designed and tested on a stock engine without any custom tuning done to the engine computer. Removing the battery cable may erase the programmed radio stations. The anti-theft code will need to be entered into some radios after the battery cable is connected. The anti-theft code can typically be found in the owner's manual or at your local dealership.



Step 2

Slide the red clip back then disconnect the electrical connector at the Mass Air Flow Sensor (MAFS).



Step 3

Loosen the clamp on the tube going to the plenum and disconnect the intake tube from the plenum.



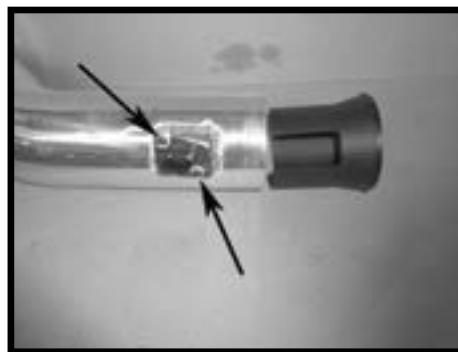
Step 4

Unclip the three hold down clips on the air filter lid, lift the lid then slide it forward to clear the locking tabs. Remove the air filter lid/intake tube assembly and air filter.



Step 5

Remove the MAFS from the factory intake tube



Step 6

Install the MAFS into the Spectre Performance aluminum intake tube, then install the MAFS Sleeve (Patent No. 7,681,461) into the aluminum intake tube.



Step 7

Assemble the heat shield with the tabs placed on the inside of the heat shield. Install the rubber bulb seal. Place the velocity stack adapter in the heat shield and install the supplied angled coupler making sure the coupler is pushed completely against the heat shield. Take note of the orientation of the funnel, this may be rotated slightly once the filter is installed in the vehicle. Once the adapter and coupler are tight against the heat shield, tighten the clamp.



Step 8

Install the heat shield making sure that the tabs on the heat shield are inserted into the lower factory airbox slots. With the heat shield located into the slots, using the 2 factory clips from the airbox, clip the heat shield into position. The center clip will not be used and can be removed if desired.



Step 9

Install the flex coupler on the plenum and secure the coupler in place. Install a second clamp but do not tighten at this time.



Step 10

Install the Spectre Performance intake tube into the coupler on the heat shield then into the flex coupler on the throttle body. Fasten securely in place



Step 11

Reconnect the MAFS electrical connector.



Step 12

Install the supplied air filter and clamp and tighten the clamp that secures the air filter. If needed, rotate the air filter/velocity stack adapter assembly for the maximum clearance as shown.



Step 13

Make sure that all clamps and hardware are fully tightened. Reconnect the battery cable and start the engine and let it warm up. Shut it off and inspect the installation once more for any loose clamps, wires, or hardware. Test drive & enjoy! Your installation is now complete. Periodically check all clamps and brackets.

Step 14

The C.A.R.B. exemption sticker, (attached), must be visible under the hood, so the emissions inspector can see it when the vehicle is required to be tested for emissions. California requires testing every two years, other states may vary.

If you have any difficulties or questions regarding the installation of this intake system, contact the Spectre Performance Technical Department by email - Tech@spectreperformance.com or by phone 1-909-673-9800 Monday thru Friday 6:00am to 2:00pm PST.

**PARTS FOR VEHICLES LISTED ARE 50 STATE LEGAL.
SEE SPECTREPERFORMANCE.COM FOR CARB
STATUS ON EACH PART FOR A SPECIFIC VEHICLE.**

SPECTRE[®]
Performance

(909) 673-9800

www.SpeedBySpectre.com

© 2015 SPECTRE PERFORMANCE Made in China

176004A
12/15/2016