

T-REX

Billet Grilles

54468

**06-08 DODGE
RAM TRUCKS**

54468

**06-08 DODGE
RAM TRUCKS**

UPPER CLASS SERIES MESH INSERTS

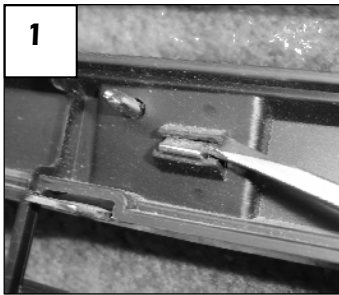
Tools Required:

Slotted Screwdrivers 8mm Socket
Electric Drill Pliers
Phillips Bit for Drill File

Hardware / Parts List:

2 Upper Class Mesh Insert (Right & Left) 6 #8 U-Nuts
10 #8 x 3/4 Self Drill Screws
6 1/2 x 1/2 Flat Spacers

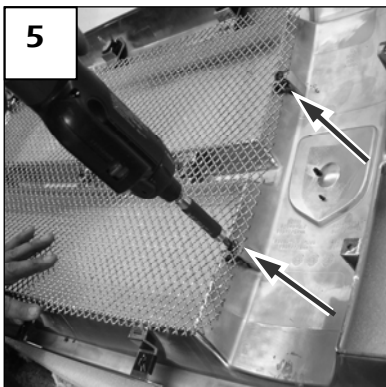
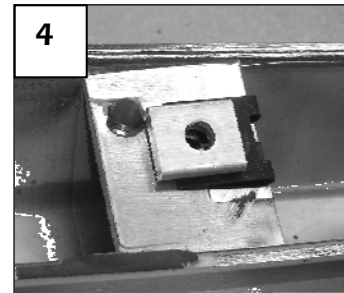
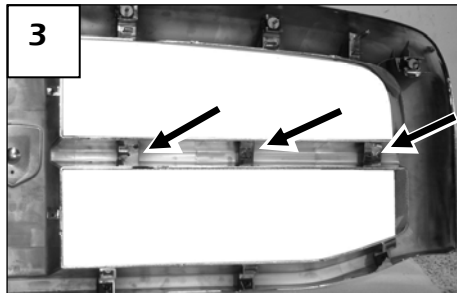
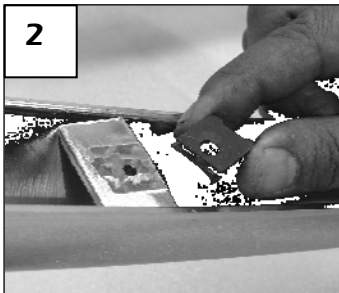
Read and understand instructions before attempting installation



Step 1

Remove six 8mm nuts from the top of the grille; then remove six 8mm bolts along the bottom. Separate the factory grille from vehicle and place it face down on a workbench.

The factory grille has two black or chrome plastic inserts held in place by molded tabs. Use a slotted screwdriver to separate the clips and remove the inserts (1). Use pliers to break the molded tabs that secure the factory inserts in place; file the area smooth where they were removed (2).



Step 2

Slide the u-nuts onto the center crossbar tabs as shown (2 & 3). Place a 1/2 x 1/2 spacer over the four u-nuts closest to the center (4). Center the one of the mesh inserts over one side of the factory grille. Secure the mesh with three self-drill screws; to the center crossbar (at each u-nut).

Secure two more screws on the center mounting points (5).

Repeat the process on the other insert. Re-install the grille assembly onto the vehicle. ***Thank you for purchasing your T-Rex billet grille.***
2/9/07