

21168

08-12 CHEVY

MALIBU



21168

08-12 CHEVY

MALIBU

2 PC BILLET GRILLE

2008-12 CHEVY MALIBU

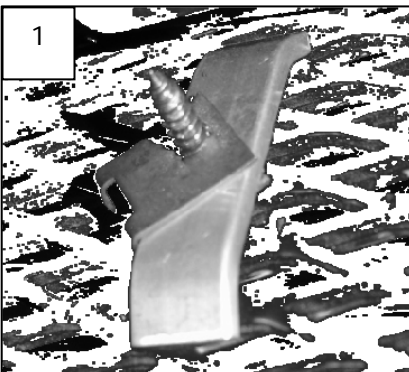
Recommended Tools:

Philips/Slotted Screwdriver
8MM, 10MM Wrench or Nut Driver
5/16" Socket / Wrench
Drill & 1/8" Drill Bit

Parts List / Hardware:

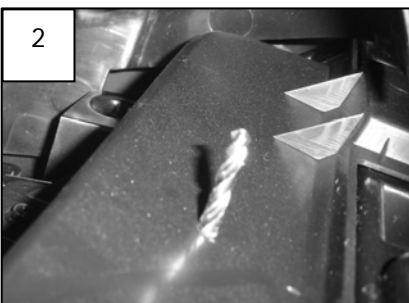
2	Billet Inserts (Top and Bottom)	2	2" Flange Brackets
2	1/8" Fender Washers	2	1 1/4" Screws
2	#8 U Nuts	2	6/32 Nylon Lock Nuts
2	6/32 x 2 1/2" Machine Screws		

Read and understand instructions before attempting installation



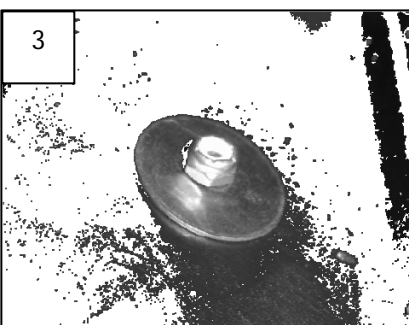
Step 1

Open the hood. Remove the plastic clips and 10mm bolts to remove the upper shroud to allow access to the back of the stock grill.



Step 2

Insert the lower grille insert. Place a U nut onto each of the flange brackets. Make sure that the billet is centered. Place a screw through the front bracket, through the factory backing and into the U nut (1). Tighten the screws till snug.



Step 3

Install the upper grille into the opening. Make sure the grille is centered. Using the drill and drill bit; drill a pilot hole using the hole in the grille bracket as a guild. It will protrude though the plastic grille backing (2) Using the provided machine screws, nylon lock nuts, and washers; secure the grille to the vehicle (3). Tighten the hardware till snug.

Step 4

Re-install the shroud to the vehicle and install the factory hardware.

Thank you for purchasing your T-Rex billet grille. 4/09/08