

# 54106

## 05-06 CHEVY

### SILVERADO



# 54106

## 05-06 CHEVY

### SILVERADO

## **2 PC UPPER CLASS SERIES GRILLE**

### **Recommended Tools:**

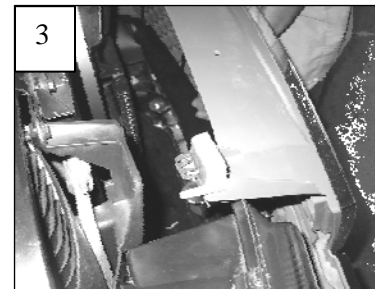
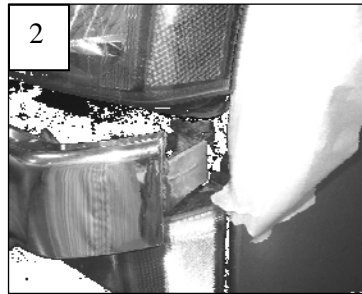
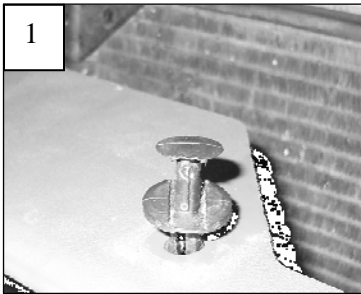
5/16" Wrench or Nut Driver  
Slotted Screwdriver  
Die Grinder or Jigsaw  
Files / Sandpaper  
Liquid Thread Lock  
Masking Tape

### **Parts List / Hardware:**

2 Upper Class Inserts (Top and Bottom)  
12 6-32 Nylon Lock Nuts  
12 #6 Flat Washers  
12 1/2" x 1/2" L Brackets

## **Read and understand instructions before attempting installation**

### **Step 1**



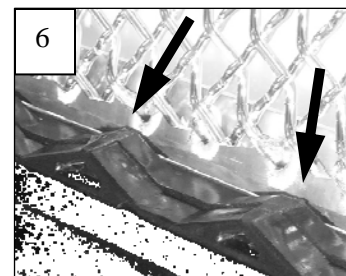
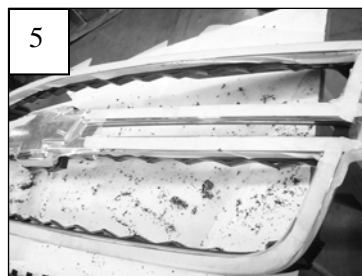
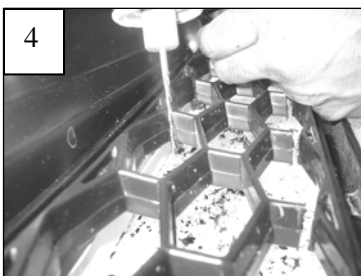
Apply masking tape to the POLISHED and painted areas to prevent scratching.

Remove the plastic radiator cover fasteners (1). Release the headlight retaining rod to loosen the headlights. Pull the ends of the grille forward to release the metal clips. Now release the metal clips on each end (2). Remove the grille (3).

### **Step 2**

Place the grille face up on a work-table. Cut the center mesh along the top and bottom openings (4). It is important to **leave the small base of the mesh** for the grille to rest against; if these are cut off, the mesh grilles will not mount into the factory grille openings (5). Note the arrows pointing to mesh base in figure (6).

PAGE 1 OF 2

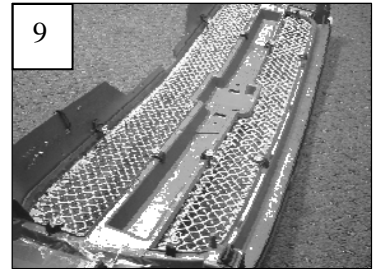
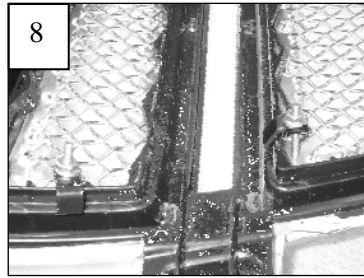
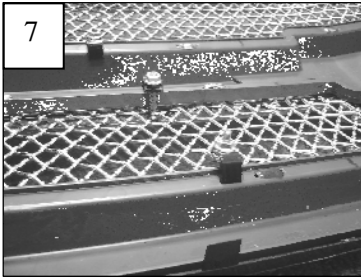


# 54106

# 54106

*(Continued)*

## Step 3



Center the billet into the openings of the grille shell. Install the 'L' shaped brackets onto the mounting studs. The 90° bend rests outside the opening; against the plastic. Thread a Nylon lock nut onto each stud. Tighten the nuts until the grille is held in place (8 & 9) **(DO NOT TO OVER-TIGHTEN)**.

## Step 4

Re-install the grille assembly back onto the vehicle. Re-install the headlight retaining pins and radiator cover.  
*Thank you for purchasing your T-Rex billet grille. 12/21/05*

